

Country Club Creek West at Roy G Guerrero Park

*Environmental Commission
May 1, 2018*

Janna Renfro
Engineer
Watershed Protection Department



RECAP:

Roy G. Guerrero Colorado River Metro Park

- 363 acres
- Constructed drainage channel – *Country Club West*
- Original drainage channel – *Country Club East*
- Improvements constructed in 2010



RECAP:

Erosion Damage

- 2015 Floods
- Severe erosion created a shorter path to the river.
- Pedestrian bridge collapsed
- May 2015 - December 2017: Erosion damaged ~1500 feet (5 acres) of drainage channel
- 100s of trees lost
- 2500 dump truck loads of sand and soil (~37,000 cubic yards)



2016



RECAP:

Temporary Repairs

- Project No. 1
- 2017
- Stabilized bank near ballfields



RECAP:

Temporary Repairs

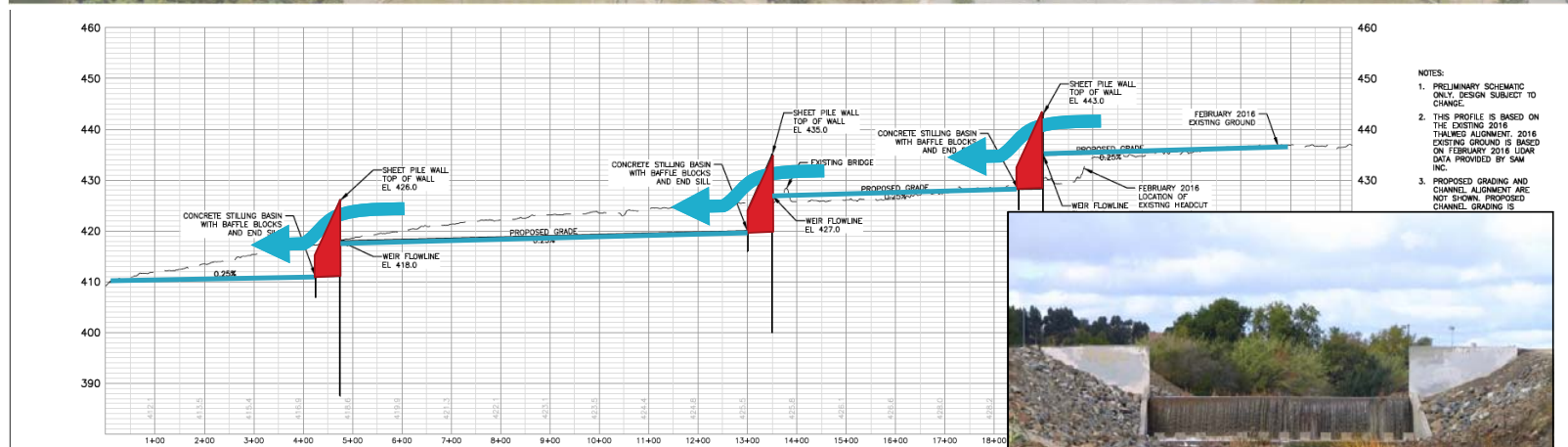
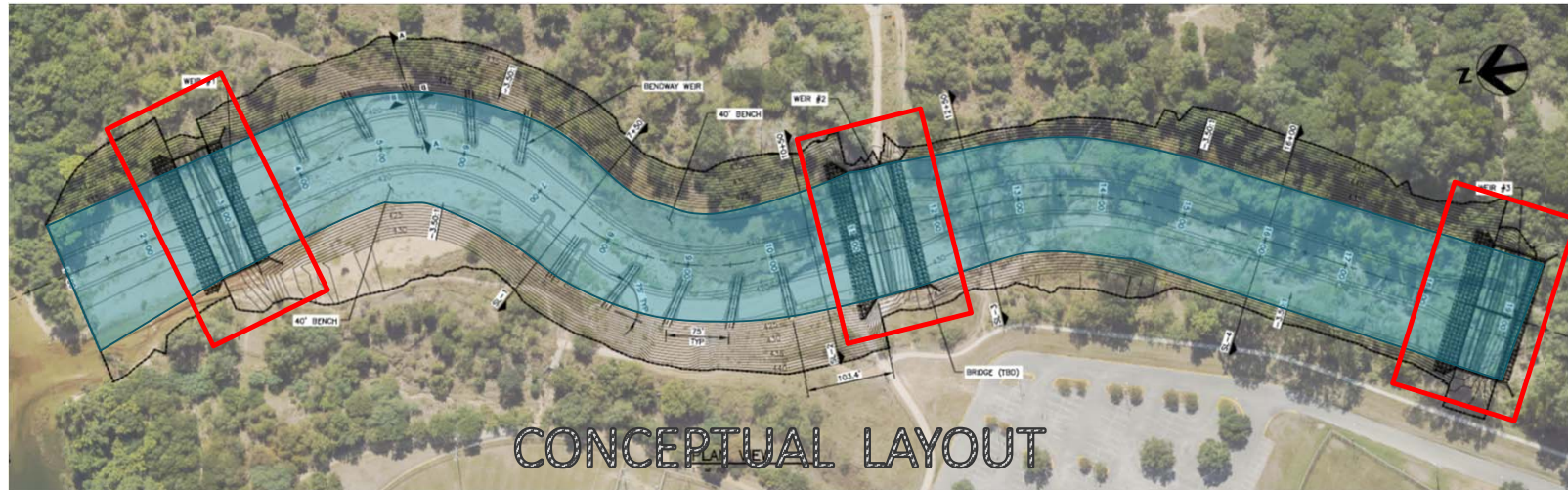
- Project No. 2:
- 2018
- Stabilized headcut



RECAP:

Permanent Solution

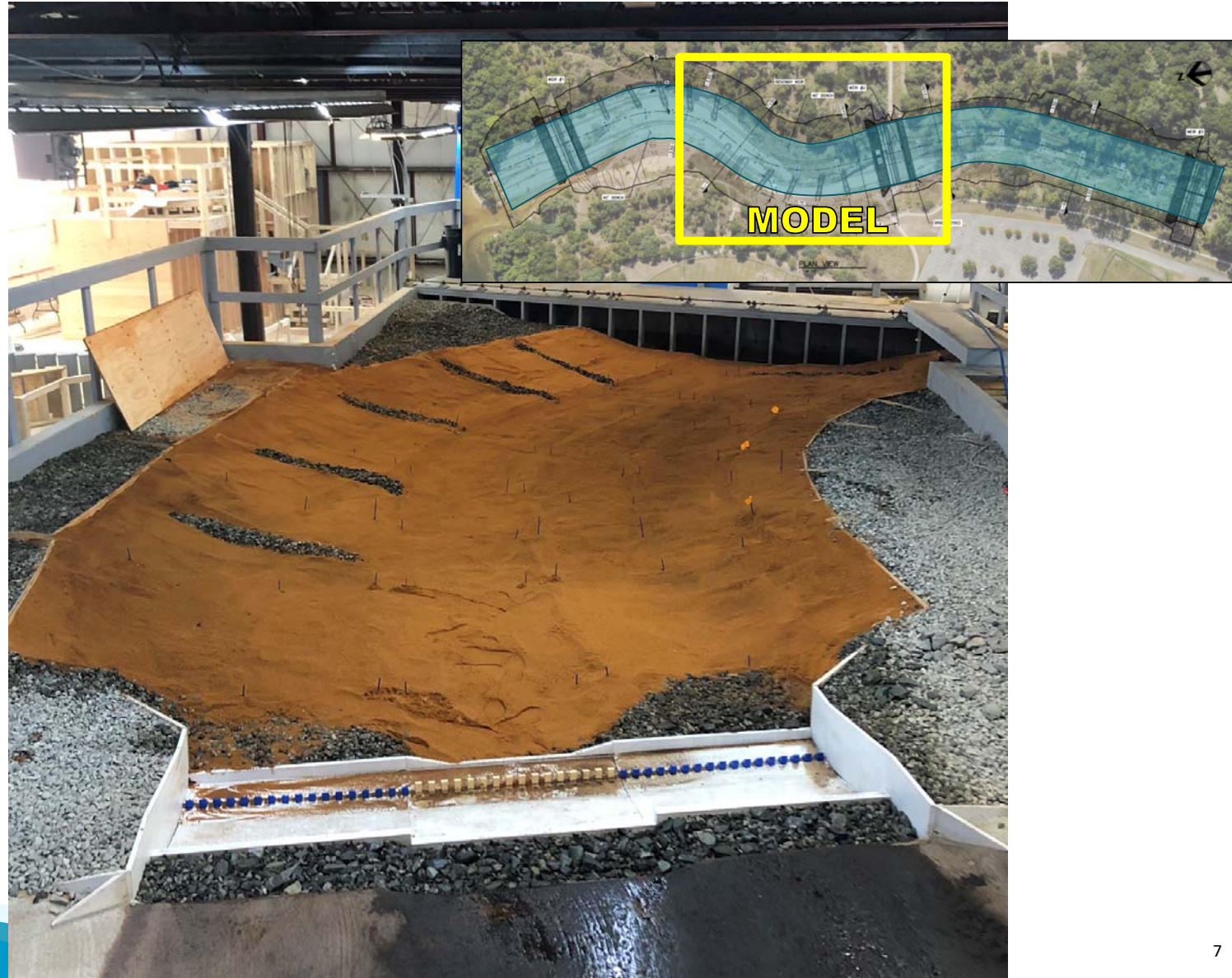
- ~2,000 linear feet of channel stabilization
- Three concrete “drop structures”
- Natural channel between structures
- Bridge over middle structure above 500-year flood elevation



UPDATE:

Physical Modeling

- Conditions are unique and challenging
- High consequence of failure requires more certainty
- Improve drop structure design
- Determine stable channel configuration



Updates

- Projected Schedule

2019-20 Physical Modeling & Design

2020-21 Permit and Bid

2021 Begin Construction

2022 Complete Construction

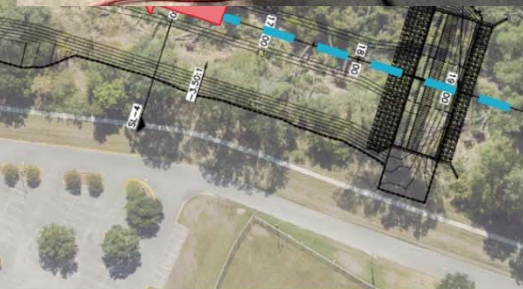
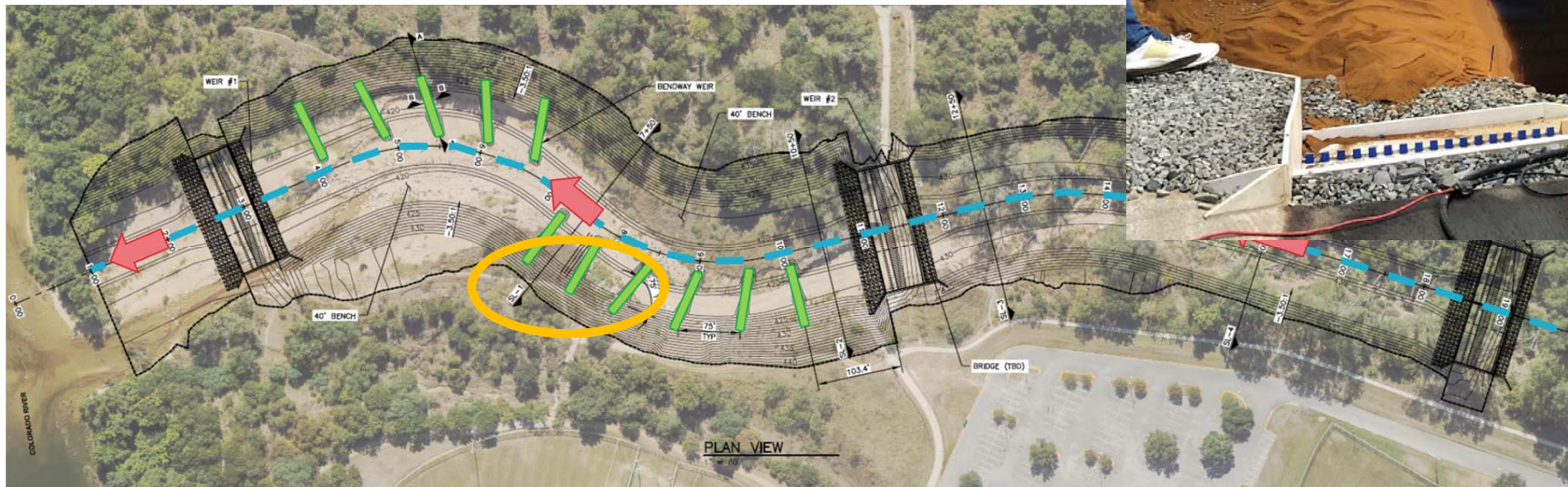
- Outreach

- Informational signs on-site

- Public Meeting Fall/Winter 2019

Model Findings

- 💧 Revise channel alignment
- 💧 Maximize width
- 💧 Structure modifications



Do nothing?

- Headcut will continue to move upstream.
- High confidence of threats upstream
- Increasingly expensive project

