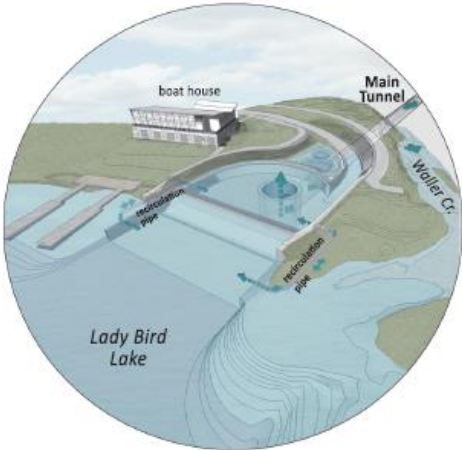


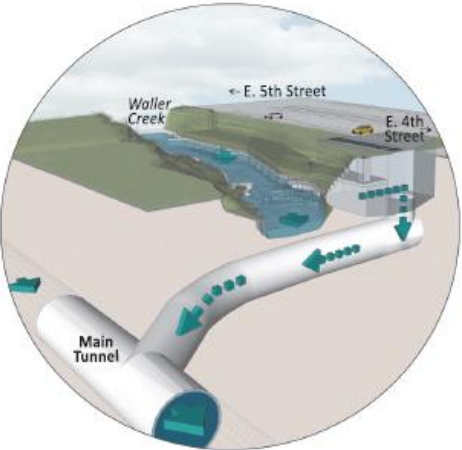
WALLER CREEK TUNNEL SEDIMENT AND DEBRIS REMOVAL

June 12, 2019

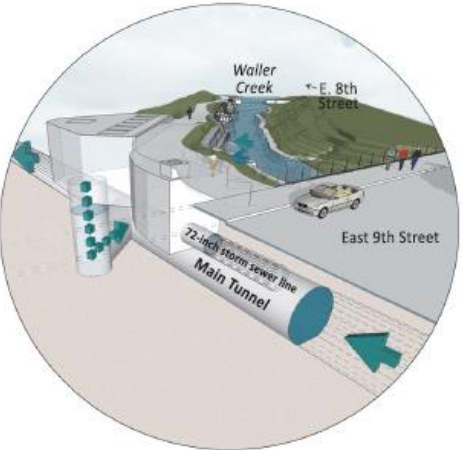
Waller Creek Tunnel Project



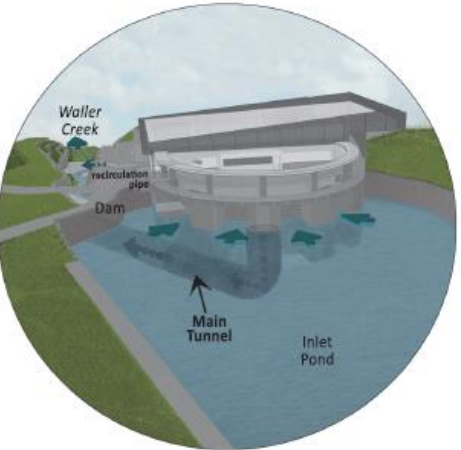
OUTLET AT LADY BIRD LAKE



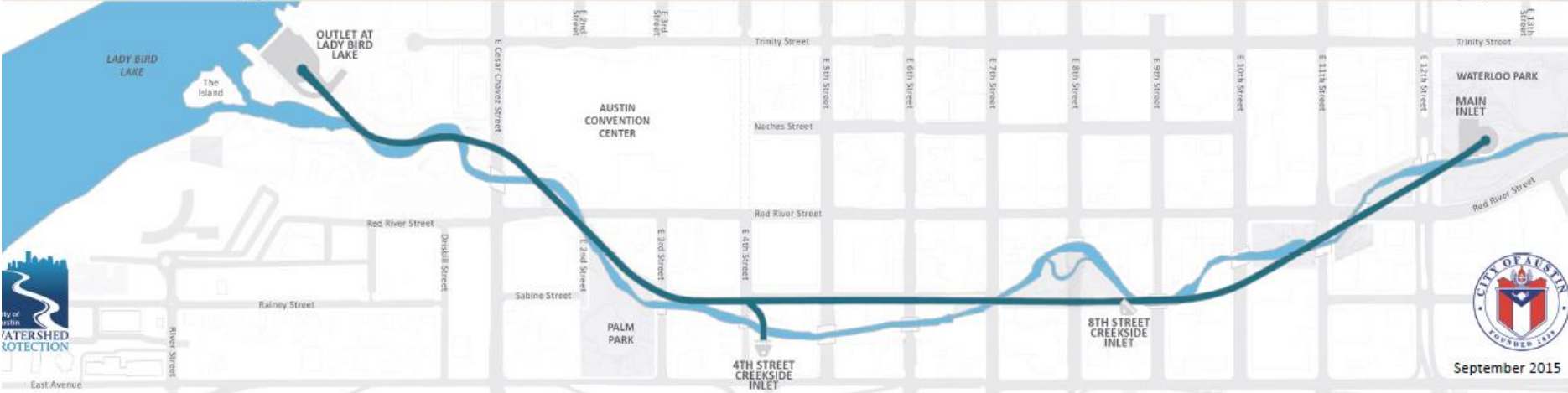
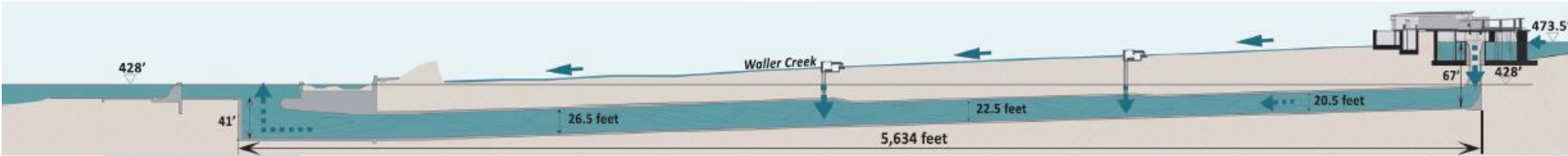
4TH STREET CREEKSIDE INLET



8TH STREET CREEKSIDE INLET



MAIN INLET AT WATERLOO PARK



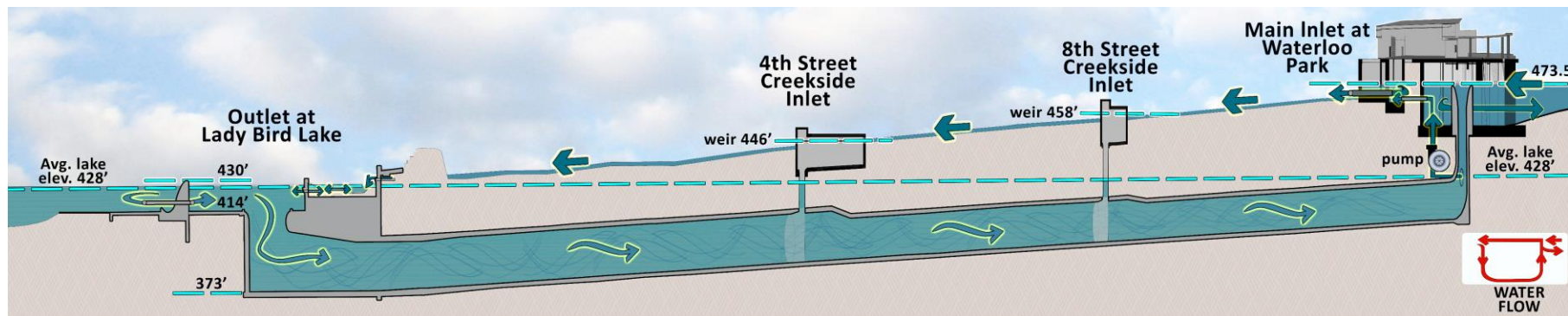
Sediment and Debris Removal Background

- Needed for conveyance
- 2017 debris removal
- 2 year cycle
- 50 storm events since 2017



Cleaning Process

- Facility setup
- Close slide gates
- Pump lagoon
- Clean outlet lagoon
- Pump tunnel
- Tunnel cleaning
- Access for assessment
- Return to normal operations



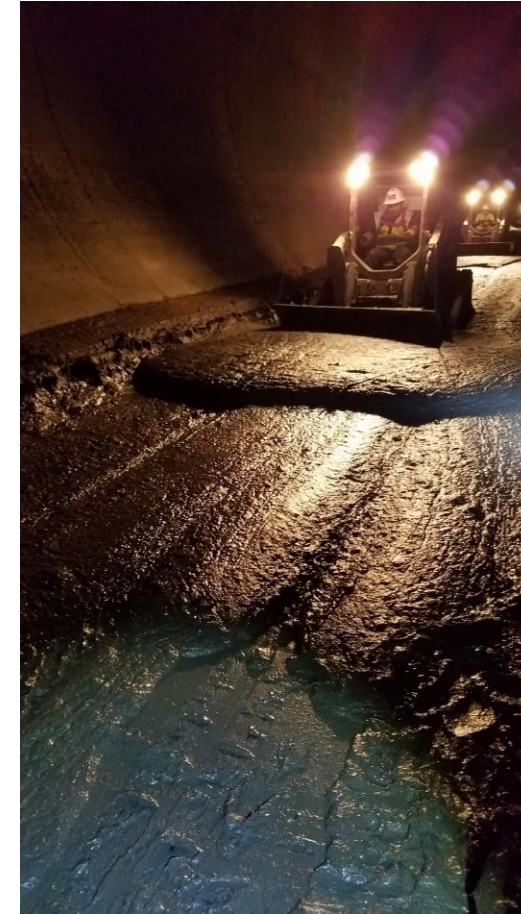
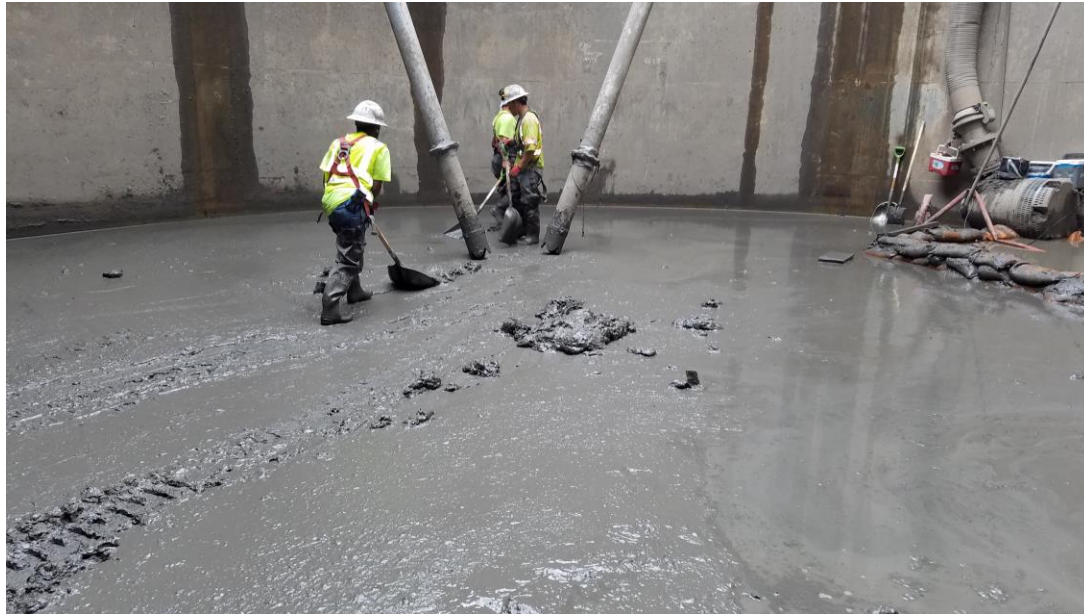
Debris Removal



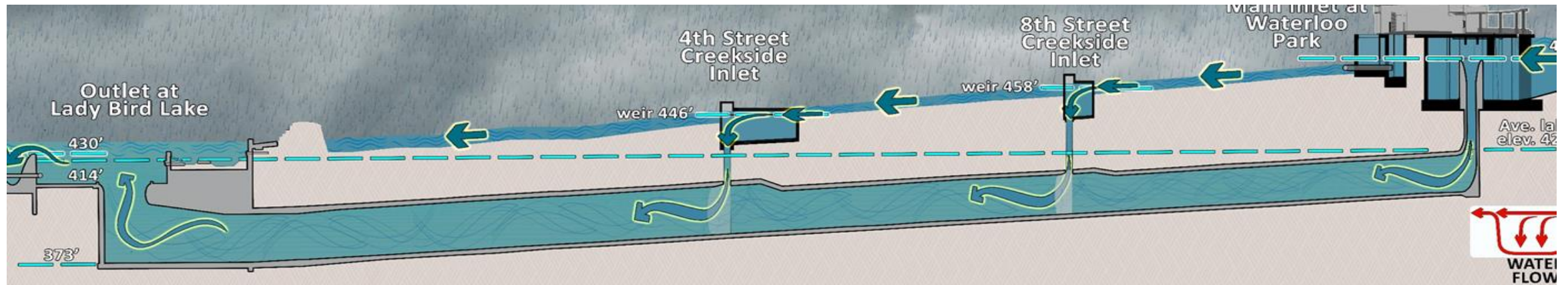
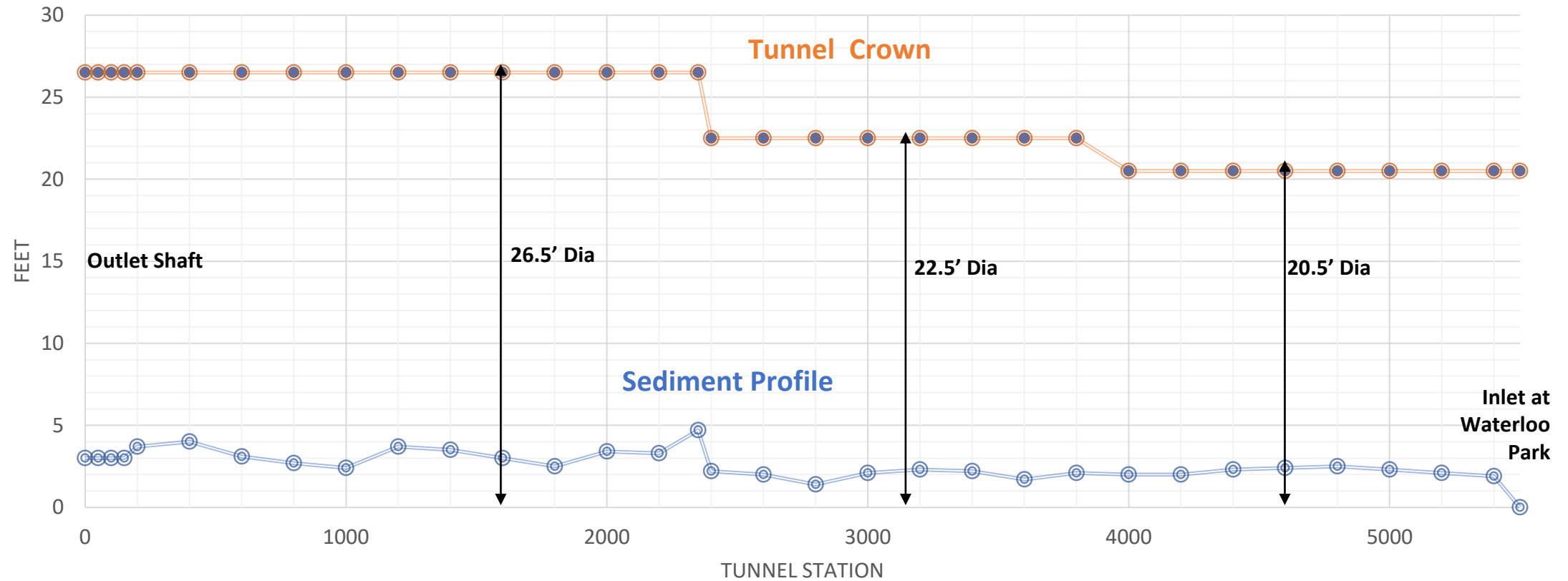
Sediment Deposition



Debris Removal

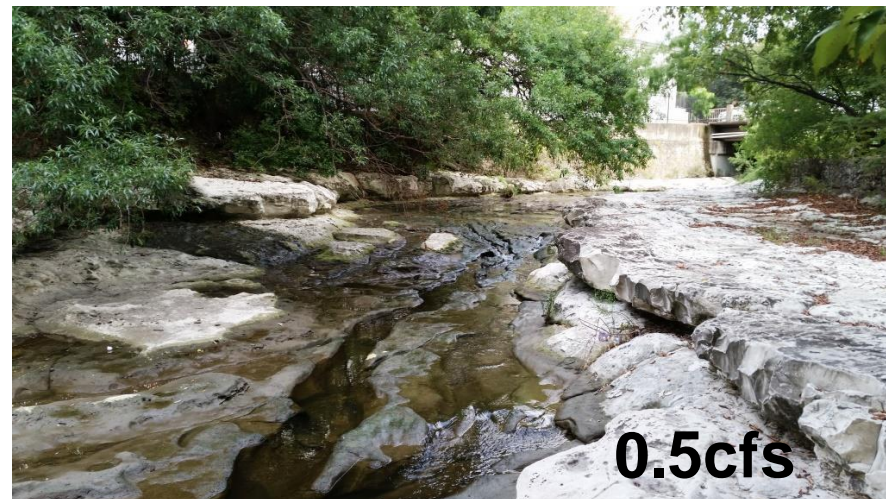


2017 Sediment Profile in Tunnel



Impact to Waller Creek District

- ❑ Outlet is most impacted
- ❑ Creek Side Inlets
- ❑ Waterloo Park
- ❑ No recirculation



Schedule

- RCA for 6/20/19 for contract award
- WPD begin work early July
- Contractor mobilizes early August
- Anticipate 12 weeks to complete

Challenges

- ❑ Limited Access
- ❑ Working in a live flood control tunnel
- ❑ Unknown tunnel conditions
- ❑ Critical adjacencies



Questions?