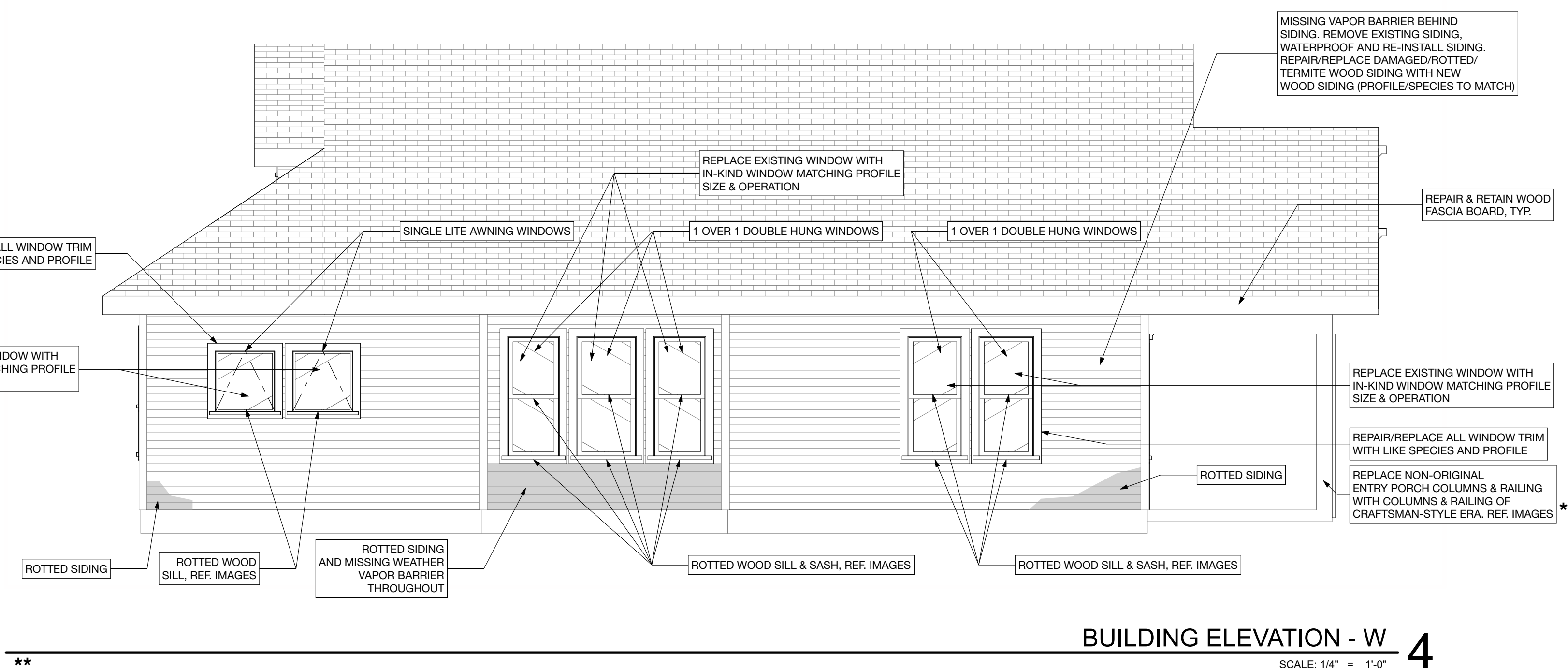
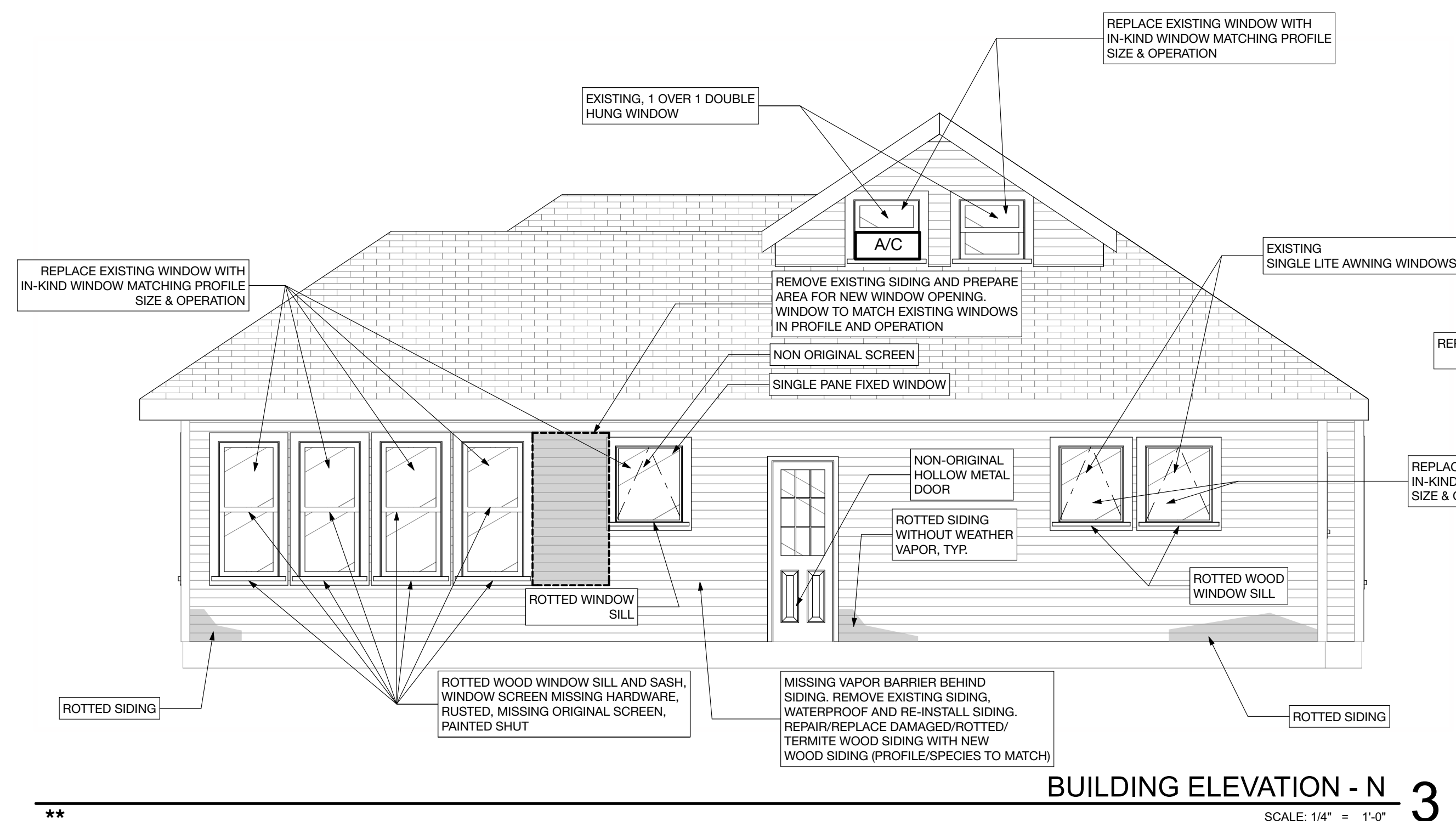


\* PROPOSED COLUMNS REFLECT EXISTING EXAMPLES FROM SMOOT/TERRACE DISTRICT PROPERTY LIST OF CONTRIBUTING BUILDINGS: 1404 W. 9TH STREET, 1504 W. 9TH STREET, 1506 W. 9TH STREET, AND 700 PRESSLER STREET; 8X8 SQUARE COLUMNS WITH BASE AND CAPITOL MOULDING TO MATCH PROFILE OF EXAMPLES MENTIONED ABOVE. RAILING TO REFLECT SIZE, PROFILE AND PROPORTIONS OF THE ABOVE EXAMPLE (1504 W. 9TH STREET).

**\*\* ALL WINDOW GLAZING AT THIS PROPERTY HAS BEEN REPORTED TO CONTAIN ASBESTOS AND  
WILL BE REMOVED PER CODE REQUIREMENTS**





BUILDING ELEVATION : UNIT K/J : W  
SCALE: 1/4" = 1'-0"

1



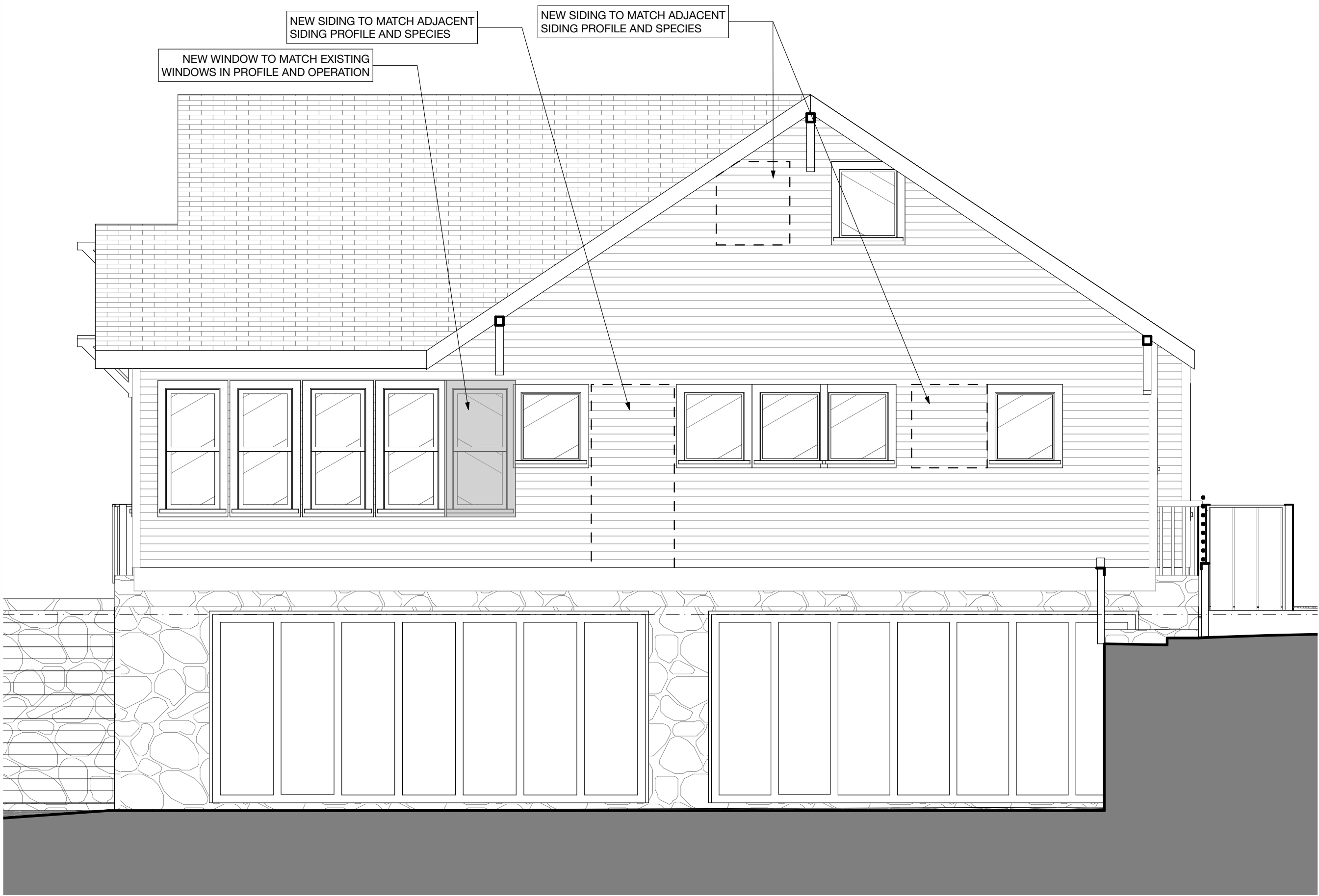
BUILDING ELEVATION : UNIT K/J : S  
SCALE: 1/4" = 1'-0"

2



BUILDING ELEVATION : UNIT K/J : E  
SCALE: 1/4" = 1'-0"

3



BUILDING ELEVATIONS : UNIT F/E : N  
SCALE: 1/4" = 1'-0"

4

# 1410: PROPOSED BUILDING ELEVATIONS