

Program Overview



**SICKLE CELL ASSOCIATION
OF TEXAS**

MARC THOMAS FOUNDATION

An effective force for families with sickle cell.

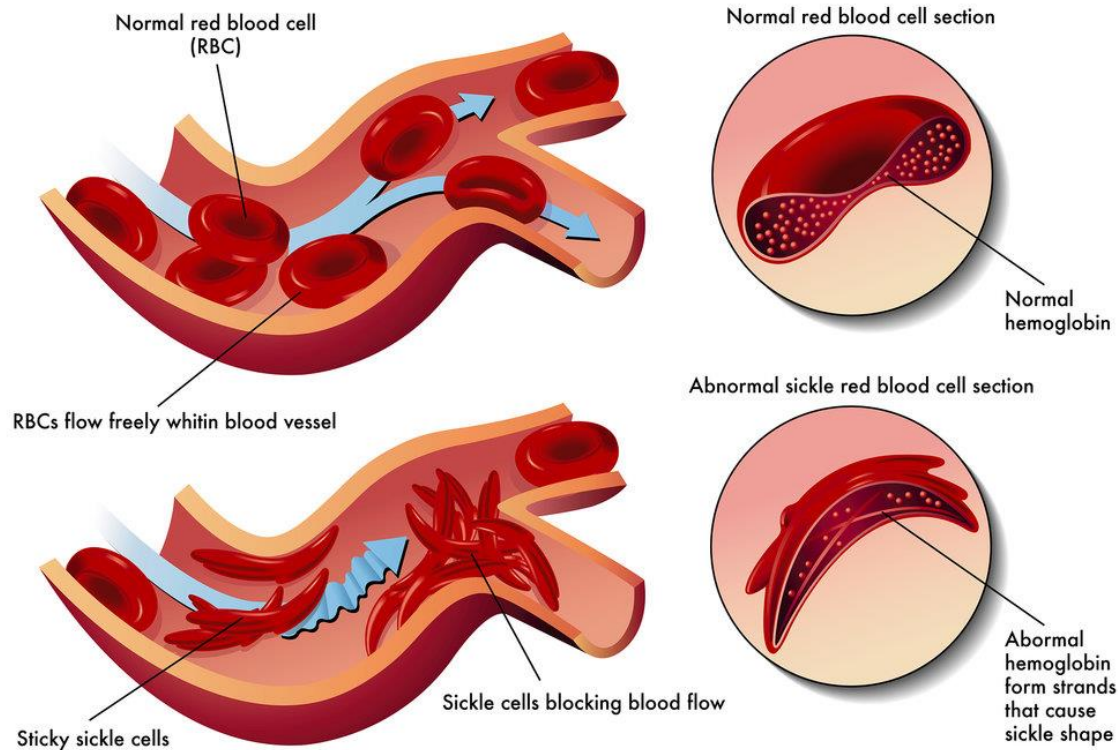
HISTORY OF THE ORGANIZATION



- ▶ The Sickle Cell Association of Texas Marc Thomas Foundation started in 1997 by a husband and wife who wanted to advocate for families suffering from sickle cell disease
- ▶ Pastor Marc Thomas suffered from sickle cell disease, pulmonary hypertension, congestive heart failure and wore oxygen 24 hours a day
- ▶ He passed away from sickle cell disease at the age of 46 but his wife and daughter continue his legacy and mission

Sickle Cell Trait and Sickle Cell Disease

Sickle-Cell Anemia



- Sickle Cell Disease is a genetic disorder and all newborns are tested for it in Texas
- It affects the red blood cells
- It causes severe pain, jaundice, blindness, organ damage and early death
- There is no cure
- Many with sickle cell trait are unaware they are carriers

2018 Services Provided to City of Austin/Travis County individuals

- ▶ Our staff of 6 provided over 7,000 services to individuals in Travis County
 - ▶ 6,660 individuals were educated in the community
 - ▶ 338 individuals received certified case management, trait testing, and certified hemoglobinopathy education.
 - ▶ 260 African American children, teens, and adults received certified case management

SERVICES AND PROGRAMMING

- ▶ We serve hundreds of clients thanks to City of Austin funding:
 1. FREE sickle cell trait testing, 1 in 12 African Americans and 1 in 36 Hispanics have sickle cell trait– there is an estimated 10,894 individuals* in Travis County with SCT, many don't even know they have it and our services are needed.
 2. Certified Case Management, Referrals, SSI/SSDI Assistance, Housing, Transportation assistance and more
 1. Bilingual services provided
 2. Monthly care calls to check in and provide support
 3. Monthly call-in support groups with various educational topics
 4. Work with clients to become empowered and more self-sufficient
 5. Hospital/Medical Setting advocacy

*(Epidemiologist Report)

SERVICES AND PROGRAMMING

- ▶ Counseling, Transition Services, Care Coordination, Medical Home Placement, Scholarship Program, Support & Limited Financial Assistance, Outreach, Education, and SOS Support Group Meetings
- ▶ Social Support Group Events
 - ▶ Christmas Parties
 - ▶ Walks
 - ▶ ESCAPE Retreat
- ▶ Camp Opportunities
 - ▶ Camp Cell-A-Bration: Summer Camp opportunity for kids 6-14
 - ▶ Camp Cell-A-Bration: Next Level- free camp for teens 15-19 with SCD to prepare to transition to adult disease management

Thanks to the City of Austin funding, our successful programs have been noticed nationwide.



ACCOMPLISHMENTS



Lenora Johnson, DrPH, MPH Director
the National Heart, Lung, and Blood,
Institute (NHLBI)



Dr. Cara James, Director of the Office of Minority
Health at the Centers for Medicare and Medicaid
Services (CMS), and Gary H. Gibbons, M.D.,
Director of the National Heart, Lung, and Blood
Institute (NHLBI) at the National Institutes of Health
(NIH)



Texas Sickle Cell Advisory Committee

ACCOMPLISHMENTS



National Heart, Lung,
and Blood Institute

[Health Topics](#)

[The Science](#)

[Grants and Training](#)

[News and Events](#)

[About NHLBI](#)

[Home](#) / [Health Topics](#) / [Education and Awareness](#) / [Sickle Cell Disease](#) / [Today's Faces of Sickle Cell Disease](#) / **Linda Thomas Wade**



Today's Faces of Sickle Cell Disease

Linda Thomas Wade

September 04, 2018

Health care educator, patient advocate, minister, president and co-founder of the
Sickle Cell Association of Texas Marc Thomas Foundation

FACES OF SOME OF OUR FAMILIES



Our Ask

Thanks to the City of Austin funding we provide services to thousand of families. We appreciate and are thankful for the long lasting relationship. However, our City of Austin contract is expiring. We ask for your support in obtaining a \$250,000 contract to continue and expand essential services.

**FOR MORE
INFORMATION PLEASE
CONTACT US**

Linda Wade, President & CEO

lwade@sicklecelltx.org

Alysian Thomas, COO

athomas@sicklecelltx.org

512-458-9767

www.sicklecelltx.org



**SICKLE CELL ASSOCIATION
OF TEXAS**

MARC THOMAS FOUNDATION