



AUSTIN'S WATER WATCHDOG
SINCE 1992

SOSAlliance.org



Save Our Springs Alliance



Mission

SOS works to protect the Edwards Aquifer, its springs and contributing streams, and the natural and cultural heritage of the Hill Country region and its watersheds, with special emphasis on Barton Springs.



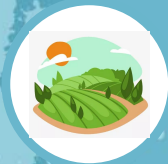
Education & Outreach

SOS dedicates significant resources towards educating local residents and government officials about the threats to the Edwards Aquifer and Barton Springs and how we, as a community, can protect them for future generations.



Legal Advocacy

SOS provides direct legal advocacy in defense of our water, our wildlife, and our green spaces. SOS also provides advice to other community organizations in matters related to administrative permit hearings, local land use decisions, environmental assessment compliance, and state and federal court litigation.

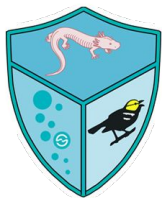


Land Conservation

SOS works to expand preserve lands, parks, and conservation easements, strategically located across the Edwards Aquifer Recharge and Contributing Zones, which is the most effective way to protect groundwater.

Education & Outreach





BARTON SPRINGS UNIVERSITY

Barton Springs University is a year-round series of educational events and classroom presentations, highlighted by a full day of outdoor learning and fun at Barton Springs Pool.

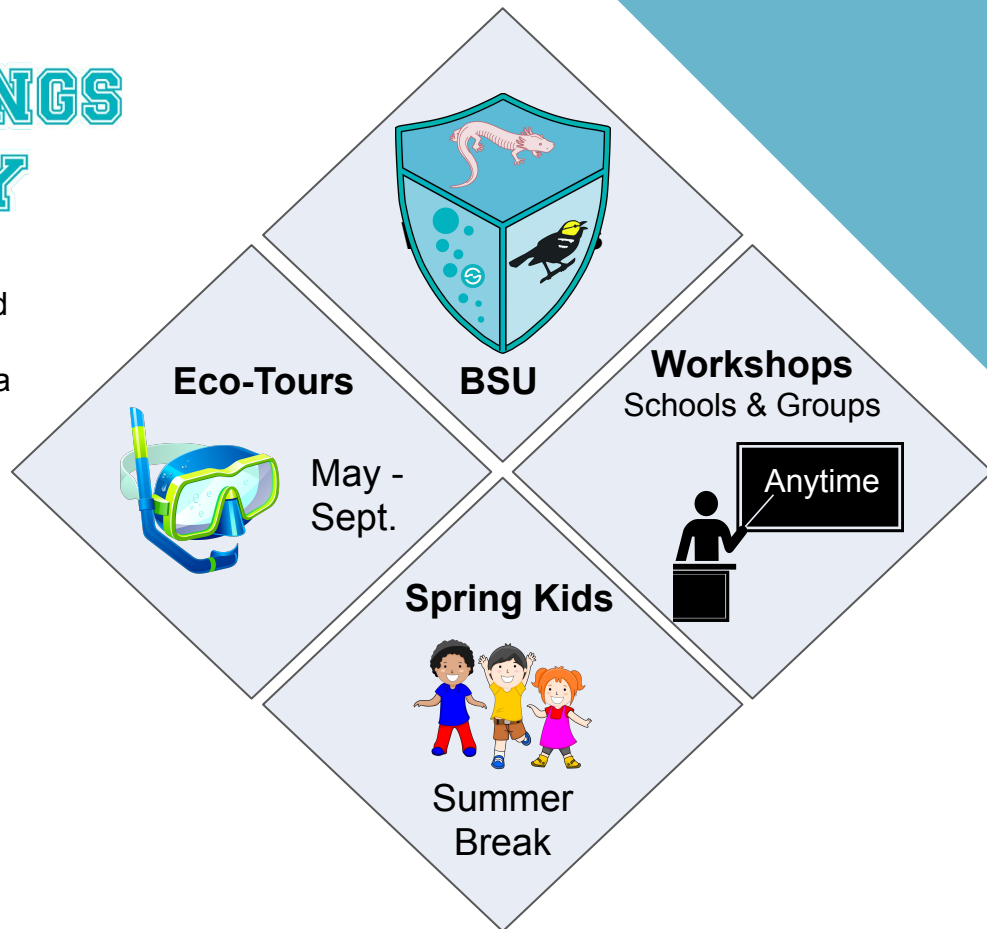
BSU 2019

September 17th, 2019

9:00 AM - 6:30 PM

@Barton Springs Pool*

***FREE ADMISSION**



Legal Advocacy

Sewage Discharge, Highways, and Habitat Destruction - oh my!



Land Development

- Review & Track Proposed Developments
 - Advocate for Better Environmental Regulations
- Provide Balance by Giving Legal Advice to Community Groups

Greatest Threat:

**Chapter 245 -
Vested Rights (i.e.,
“Grandfathering”)**



Pipelines / Sewage

- Promote Alternative Methods of Wastewater Treatment
- Fight Discharge into Creeks
 - Advocate for Water Conservation & Reuse
- Work to Prevent Pipeline Extensions into Hill Country

Greatest Threat:

**Ongoing Litigation
Related to Dripping
Springs Sewage**



Highways

- Promote Alternative Transit & Better Roadway Design
- Protect Endangered Species & Water Quality
- Focus Infrastructure Towards Less Environmentally Sensitive Areas

Greatest Threat:

**Oak Hill “Highway”
ESA Litigation &
South Mopac
Extension**

Land Conservation

Edwards Aquifer

- Drinking water supply for 2+ million people
- For Austin, critically important as a future drinking water source & habitat preservation
- Land conservation is the most effective method for protecting groundwater from pollution and other contaminants

Imagine a national park-sized preserve from San Antonio to Austin, with a Spring-to-Spring trail.

San Marcos Springs



San Antonio Springs



Barton Springs

Source Water Protection

- Identify funding resources for source water protection & land conservation
- Work with landowners to establish conservation easements and cluster development away from recharge features
- Reduce strains on limited water supplies resulting from rapid growth
- Focus on regional cooperation



Bill Bunch

Executive Director
bill@sosalliance.org



Pat Brodnax

Managing Director
pat@sosalliance.org



Kelly Davis

Staff Attorney
kelly@sosalliance.org



Heidi Yohe

Outreach & Education Coordinator
heidi@sosalliance.org

Save Our Springs

Contact SOS:
512-477-2320



Bobby Levinski

Staff Attorney
bobby@sosalliance.org