



Pease District Park Request Approval for Dedication and Onsite Recognition

Parks and Recreation Board

Christine Chute Canul, Development Administrator

Parks and Recreation Department, City of Austin

August 27, 2019

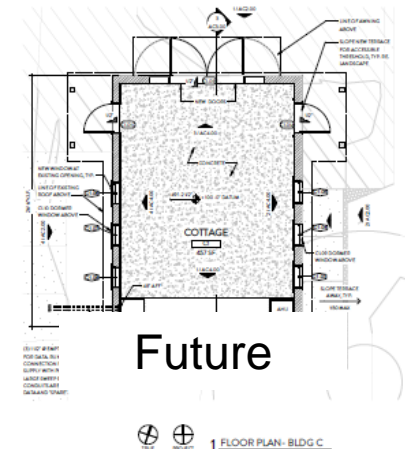
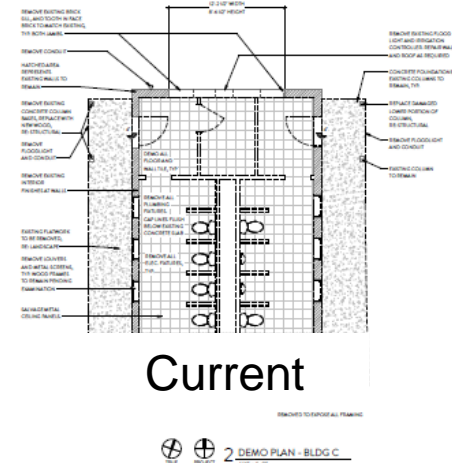


Pease District Park

Pease Park Conservancy

Description of Project:

- 492 sq. ft mid-1920s historic building once used as park restrooms referred to as Tudor Cottage for its Tudor-style
- Currently used as storage for park maintenance equipment
- To be transformed into a small meeting room without plumbing for small parties, meetings, events and gatherings



Pease District Park Tudor Cottage Future Interior



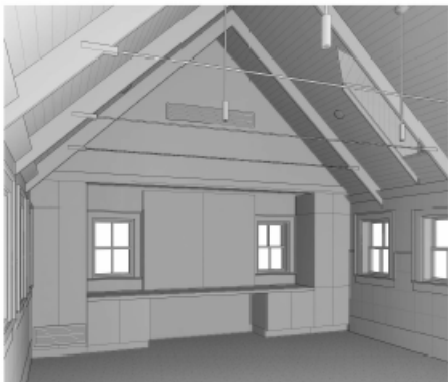
6 TUDOR - INTERIOR VIEW NORTH



4 BLDG C - WEST
3/8" = 1'-0"



3 BLDG C - NORTH
3/8" = 1'-0"



5 TUDOR - INTERIOR VIEW SOUTH



2 BLDG C - EAST
3/8" = 1'-0"



1 BLDG C - SOUTH
3/8" = 1'-0"



Pease District Park

The Historic Tudor Cottage

The estimated cost of the Tudor Cottage restoration is approximately \$380,000. The estimated useful life of the feature is 40-50 years. The estimated annual operations and maintenance costs are \$20,000. It is important to note that this donor's funds will be used solely for operations and maintenance, as the cost of renovating the feature has been paid in full by a previous donor.





Request for Dedication

Libby and Dale Linebarger

- Dale and Libby Linebarger, both native Texans, have lived in Austin for almost 50 years and have six children and ten grandchildren.
- Mr. Linebarger, a founding partner of the Linebarger Law Firm, the largest firm in the U.S. specializing in government collections. Since his retirement in 2006, he has maintained a small law practice and stays involved in real estate development as well as farm and ranching operations.
- Mrs. Linebarger, a former teacher, has been a consultant with the Texas Education Agency, as well as owner of a children's clothing store in Austin. In 1988, she was elected to represent Travis and Hays counties as a member of the Texas House of Representatives and served as Chair of the Public Education Committee during her third term before retiring.





Request for Dedication

Libby and Dale Linebarger

- The Linebargers have pledged \$1M toward operations and maintenance costs associated with the Tudor Cottage as part of Pease Park Conservancy's Kingsbury Commons Capital Campaign.
- The dedication would be reflected on a tasteful and discrete plaque placed on or near the feature that will be submitted to PARD for final approval prior to fabrication.

Requested Action



Action:

Make a recommendation to the Parks and Recreation Department Director to approve Pease Park Conservancy's request for an on-site recognition for a considerable donation from Dale and Libby Linebarger to be used for the future operation and maintenance of The Historic Tudor Cottage at Kingsbury Commons within Pease District Park.

