



Segment Limits:

- Teri Road to 1,200 feet south of Burleson Rd
- 1,200 south of Burleson Rd to Burleson Rd



FIGURE 1.
E Stassney Ln

08 / 20 / 2019

Study Segments and Location

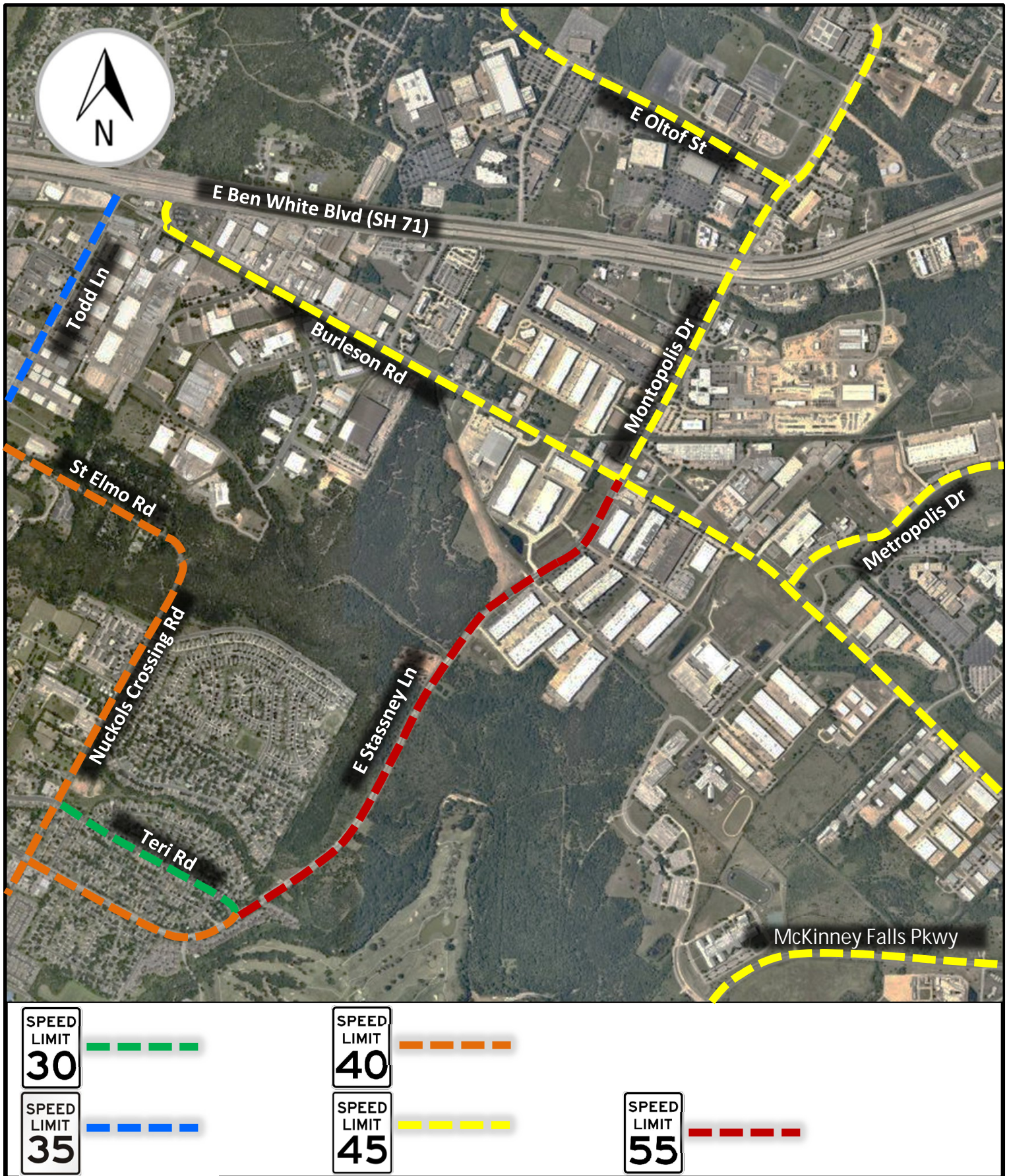


FIGURE 2.
E Stassney Ln

08 / 20 / 2019

Existing Posted Speed Limits

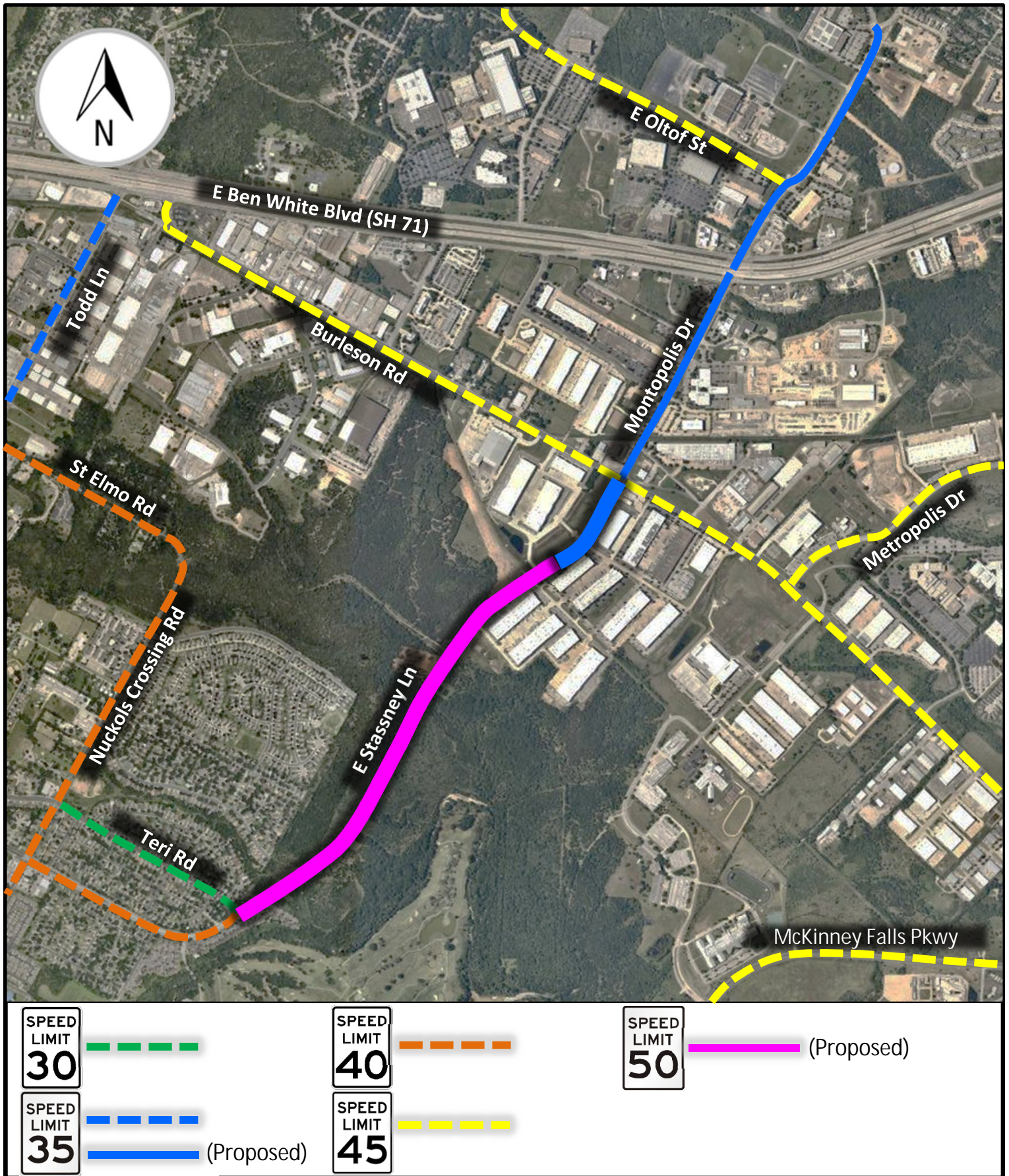


FIGURE 3.
E Stassney Ln

08 / 20 / 2019

Proposed Posted Speed Limits