

# CAPITAL IMPROVEMENTS WEB MAP

Capital Projects Explorer for All



# AGENDA

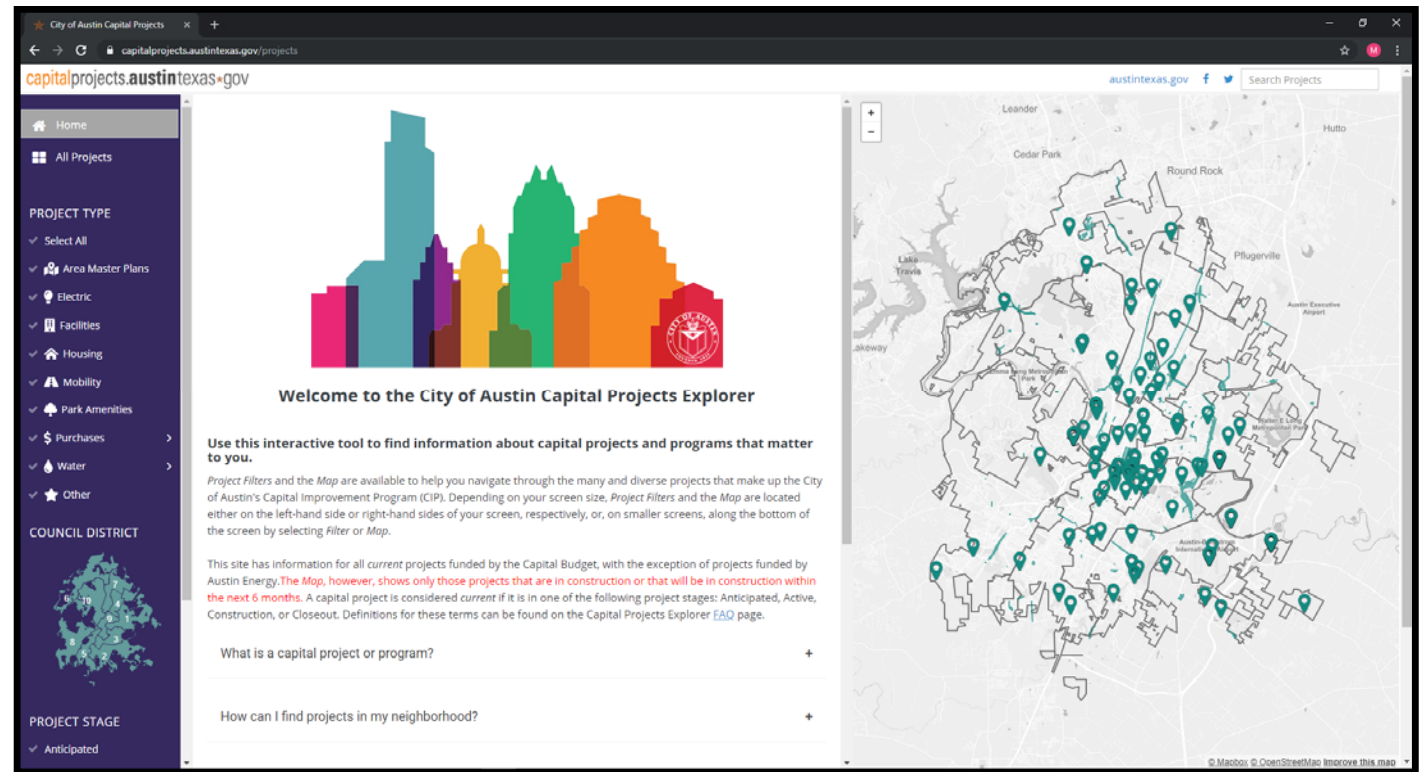
## ➤ History

## ➤ Project Details

- CPE Demo
- CPE Features

## ➤ Next Steps

- Future Phases

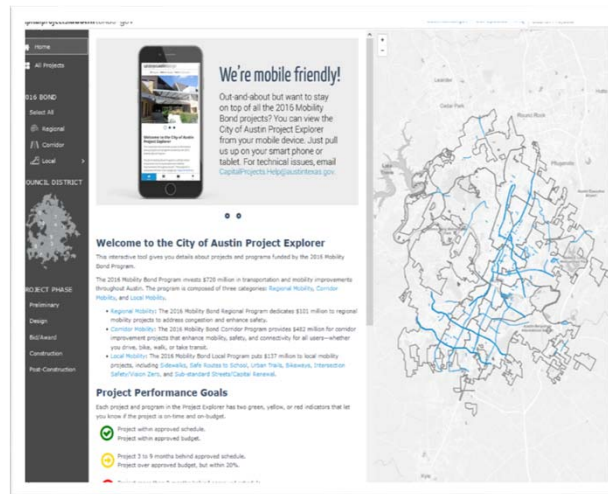


# HISTORY



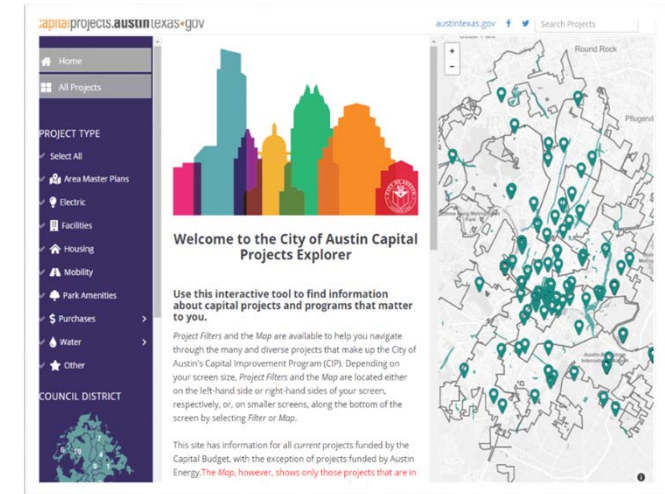
## Phase 1 : CIVIC

- Launched in 2013
- Shows GO Bond Projects prior to 2016



## Phase 2 : 2016 Mobility Bond CPE

- Launched in 2017
- Shows 2016 Mobility Bond projects



## Phase 3 : CPE for All

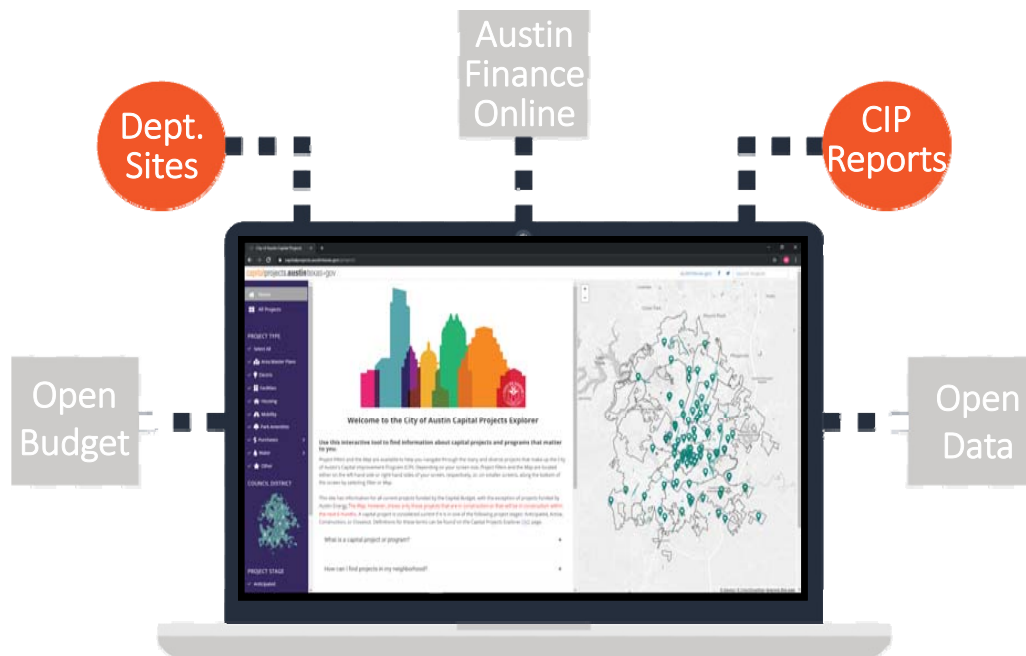
- Launched October 1, 2019
- Rebranding and combining sites to include all Capital Improvements Projects\*

\*Excludes projects that are unfunded, closed, cancelled, on hold, unpurchased land acquisition or sponsored by Austin Energy.



# PROJECT DETAILS

Create a single entry point for the community of Austin to find information about capital infrastructure investments

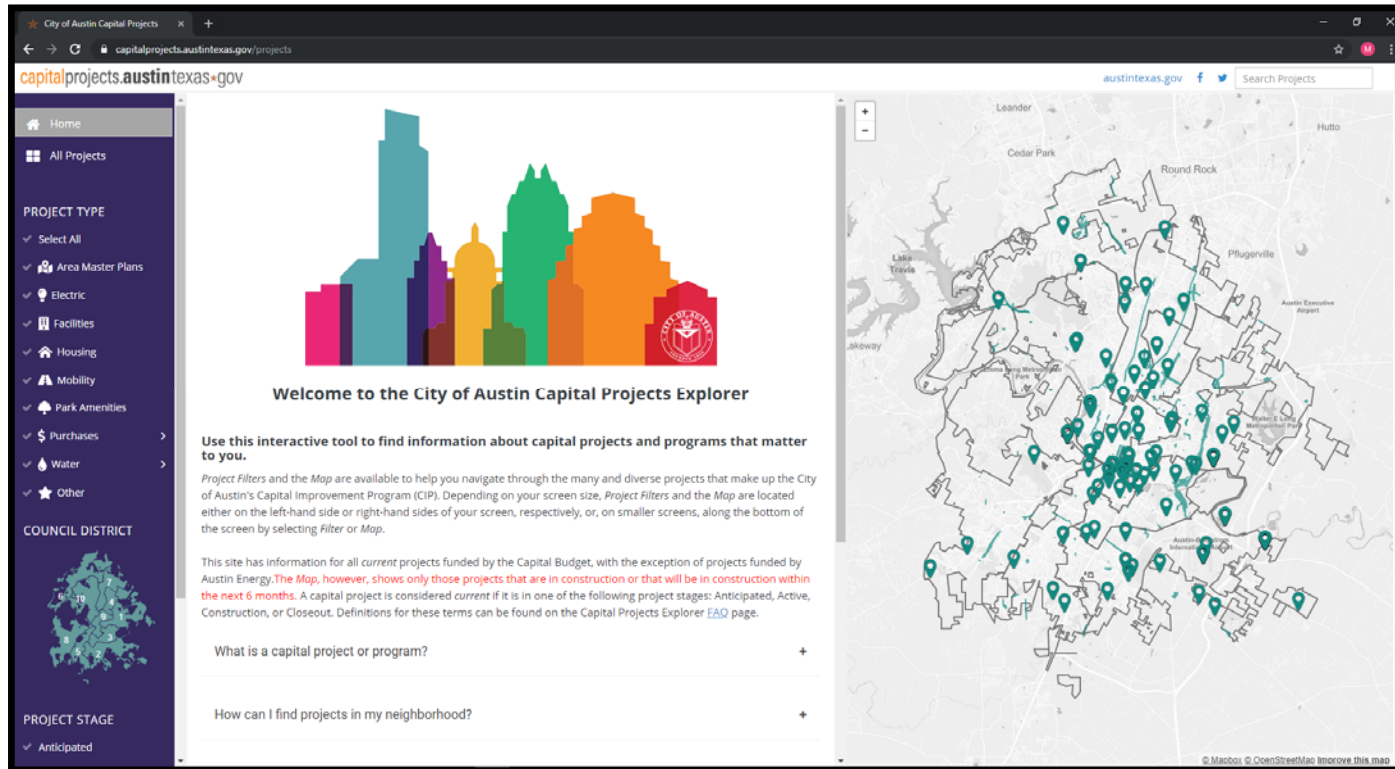


## Objectives

- Increase available information about the CIP by including all active projects (excluding AE) from investments across both voter approved and non-voter approved funding sources.
- Leverage successes of prior phases to combine and simplify information into one application/site.
- Provide a space online for finding the most important details about the Capital Projects that enhance our community.



# CPE FOR ALL




capitalprojects.austintexas.gov



# CPE FEATURES

- **Filters**
  - 2016 and 2018 Bonds
  - District(s)
  - Infrastructure Type
  - Stage
  - Responsible Department
- **Information for ALL capital projects, regardless of funding source**
  - Description
  - Type
  - Status/Phase
  - Location
  - District(s)
  - Contact Information
  - Approved Budget
  - Obligated Funds
  - Anticipated Construction Start and End Dates
- **Flexible viewing capabilities for multiple devices, including mobile**
- **All data sourced from financial system of record, eCAPRIS**

**Yarborough Branch Library  
Renovation**

Project ID: 6014.042

[More Information](#)

Description:  
The 15,120 SF Yarborough Branch Library occupies the former Americana Theater building constructed in 1965. This project will renew the shopworn and faded interiors, deteriorated furnishings and failed equipment.

[Contact Us](#) for more information about the project.

Project Location: The Yarborough Branch Library , at 2200 Hancock Drive, is located a block west of the busy Burnet Road arterial, near Rosedale Elementary School, and within easy walking distance of numerous residences and commercial businesses.

District(s): 7

*Data Current as of September 30, 2019.  
For definitions of the Key Terms displayed on this screen, please visit the [FAQ](#) page.*

| Budget             | Obligated                    |
|--------------------|------------------------------|
| <b>\$984,000</b>   | <b>\$872,000</b>             |
| Construction Start | Construction End             |
| <b>Spring 2019</b> | <b>Anticipated Fall 2019</b> |

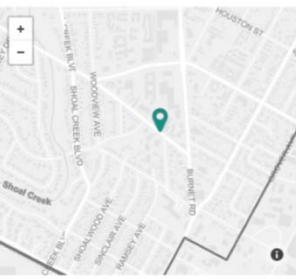

Stage

Anticipated

Active

Construction

Closeout





# FUTURE PHASES

---



- Filters by:
  - Strategic Outcome(s)
  - Funding Source(s)
  - Financial Sponsor Department(s)
- Enhanced and standardized project reports. Features may include;
  - Detailed budget and spending

