

LEGAL DESCRIPTION

FIELD NOTES FOR A 10.700 ACRE TRACT OF LAND OUT OF THE WILLIAM CANNON SURVEY NUMBER 19, TRAVIS COUNTY, TEXAS; BEING ALL OF A CALLED 3.550 ACRE TRACT OF LAND AS CONVEYED TO MARY M. STINSON BY WARRANTY DEED RECORDED IN DOCUMENT NUMBER 2002188994 OF THE OFFICIAL PUBLIC RECORDS OF TRAVIS COUNTY, TEXAS, ALL OF THAT PORTION OF A CALLED 7.43 ACRE TRACT OF LAND AS CONVEYED TO NED GERALD STINSON AND MARY M. STINSON BY DEED RECORDED IN VOLUME 3387, PAGE 1949 OF THE DEED RECORDS OF TRAVIS COUNTY, TEXAS, AND ALL OF A CALLED 3.74 ACRE TRACT OF LAND AS CONVEYED TO NED GERALD STINSON AND WIFE, MARY M. STINSON BY DEED RECORDED IN VOLUME 5991, PAGE 1493 OF THE DEED RECORDS OF TRAVIS COUNTY, TEXAS, SAVE AND EXCEPT A CALLED 0.142 ACRE TRACT OF LAND AS CONVEYED TO THE STATE OF TEXAS BY DEED RECORDED IN VOLUME 12738, PAGE 1291 OF THE REAL PROPERTY RECORDS OF TRAVIS COUNTY, TEXAS; SAID 10.700 ACRE TRACT OF LAND BEING MORE PARTICULARLY DESCRIBED BY METES AND BOUNDS AS FOLLOWS:

BEGINNING at a 1/2-inch iron rod with cap stamped "BGE INC" set on the southeasterly right-of-way line of Manchaca Road (F.M. 2304) (variable width public right-of-way) and on the northeast line of the above described Stinson 3.74 acre tract, at the northeast corner of said State of Texas Tract and the westerly corner of Lot 1, Block A of SOUTH BRIDGE VILLAS 3, a subdivision as recorded in Document Number 201300118 of the Official Public Records of Travis County, Texas, for the most northerly corner of the herein described tract of land;

THENCE, with the line common to said Lot 1 and said Stinson 3.74 acre tract the following three (3) courses:

- 1) S 63°52'51" E a distance of 332.83 feet to a 1/2-inch iron rod with cap stamped "BGE INC" set at an exterior corner of said Lot 1 and an interior corner of said Stinson 3.74 acre tract, for an interior corner of the herein described tract;
- 2) N 30°19'09" E a distance of 13.93 feet to a 3/8-inch iron rod found at an interior corner of said Lot 1 and an exterior corner of said Stinson 3.74 acre tract, for an exterior corner of the herein described tract; and
- 3) S 63°52'51" E, passing at a distance of 652.59 feet a 1/2-inch iron rod with cap stamped "POINTLINE RPLS 1587" and continuing for a total distance of 655.18 feet to a calculated point on the northwesterly right-of-way line of the Union Pacific Railroad (100 feet wide) at the southerly corner of said Lot 1 and the easterly corner of said Stinson 3.74 acre tract, for the easterly corner of the herein described tract of land;

THENCE, with said northwesterly right-of-way line of Union Pacific Railroad, 50.00 feet northwest of and parallel to the centerline of said Union Pacific Railroad, S 29°26'50" W a distance of 536.00 feet to a calculated point at the southerly corner of said Stinson 3.550 acre tract and the easterly corner of a called 3.931 acre tract of land as conveyed to Last Rock Star, LLC by Special Warranty Deed recorded in Document Number 2011077861 of the Official Public Records of Travis County, Texas, for the southerly corner of the herein described tract, from which a 1/2-inch iron rod found bears S 63°58'39" E a distance of 0.90 feet;

EXHIBIT "A"

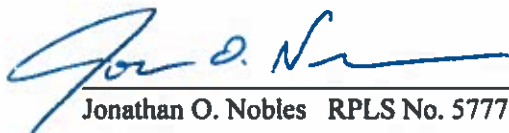
THENCE, with the line common to said 3.931 acre tract and said Stinson 3.550 acre tract, N63°58'39"W a distance of 729.40 feet to a 1/2-inch iron rod with cap stamped "POINTLINE RPLS 1587" found at the westerly corner of said Stinson 3.550 acre tract, the northerly corner of said 3.931 acre tract, the easterly corner of a called 1.25 acre tract of land as conveyed to Jacque Louise Stinson by Cash Warranty Deed recorded in Document Number 2005202094 of the Official Public Records of Travis County, Texas, and the southerly corner of the remainder of a called 4.802 acre tract of land conveyed to James S. Ramsey by Gift Warranty Deed recorded in Volume 12559, Page 6 of the Real Property Records of Travis County, Texas, for a southwesterly corner of the herein described tract of land;

THENCE, with the line common to said 4.802 acre remainder tract and said Stinson 3.550 acre tract, N34°09'43"E a distance of 216.65 feet to a 1/2-inch iron rod found on the southwest line of said Stinson 7.43 acre tract, at the northerly corner of said Stinson 3.550 acre tract and the easterly corner of said 4.802 acre remainder tract, for an interior corner of the herein described tract;

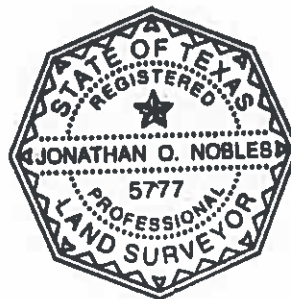
THENCE, with the line common to said 4.802 acre remainder tract and said Stinson 7.43 acre tract, N64°02'11"W a distance of 267.06 feet to a 1/2-inch iron rod found on said southeasterly right-of-way line of Manchaca Road, at the northerly corner of said 4.802 acre remainder tract and the southerly corner of said State of Texas Tract, for the most westerly corner of the herein described tract;

THENCE, with said southeasterly right-of-way line of Manchaca Road, N27°38'49"E a distance of 308.75 feet to the **POINT OF BEGINNING** and containing 10.700 acres of land, more or less.

I hereby certify that these notes were prepared from a survey made on the ground by BGE Inc., under my supervision on July 18, 2019 and are true and correct to the best of my knowledge. A sketch accompanies this description.


Jonathan O. Nobles RPLS No. 5777

BGE Inc
101 West Louis Henna Blvd., Suite 400
Austin, Texas 78728
Telephone: (512) 879-0400
TBPLS Licensed Surveying Firm No. 10106502

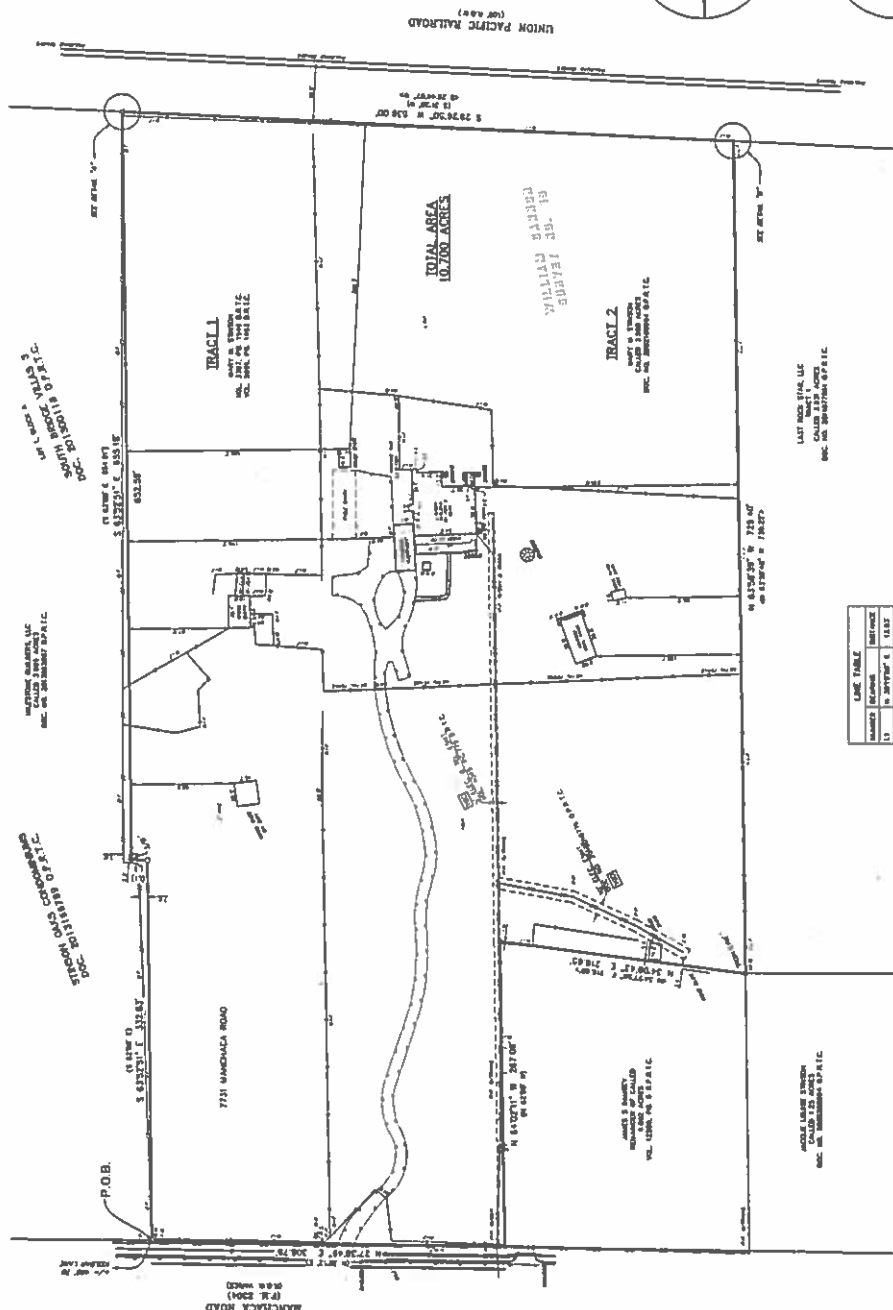
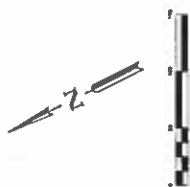


8/30/2019
Date

Client: Greystar
Date: August 30, 2019
Job No: 6949-00
City Grid: F16
TCAD Nos.: 0422150137, 0422150117

BASIS OF BEARING;


Bearing orientation is based on the Texas State Plane Coordinate System, NAD 83, Texas Central Zone. All distances are in surface and can be converted to grid by multiplying by the combined scale factor of 0.9999494346



LOAD TABLE		
LOADING STATION	LOADING QUANTITY	LOADING RATE
1	1000	1000
2	2000	2000
3	3000	3000
4	4000	4000
5	5000	5000
6	6000	6000
7	7000	7000
8	8000	8000
9	9000	9000
10	10000	10000

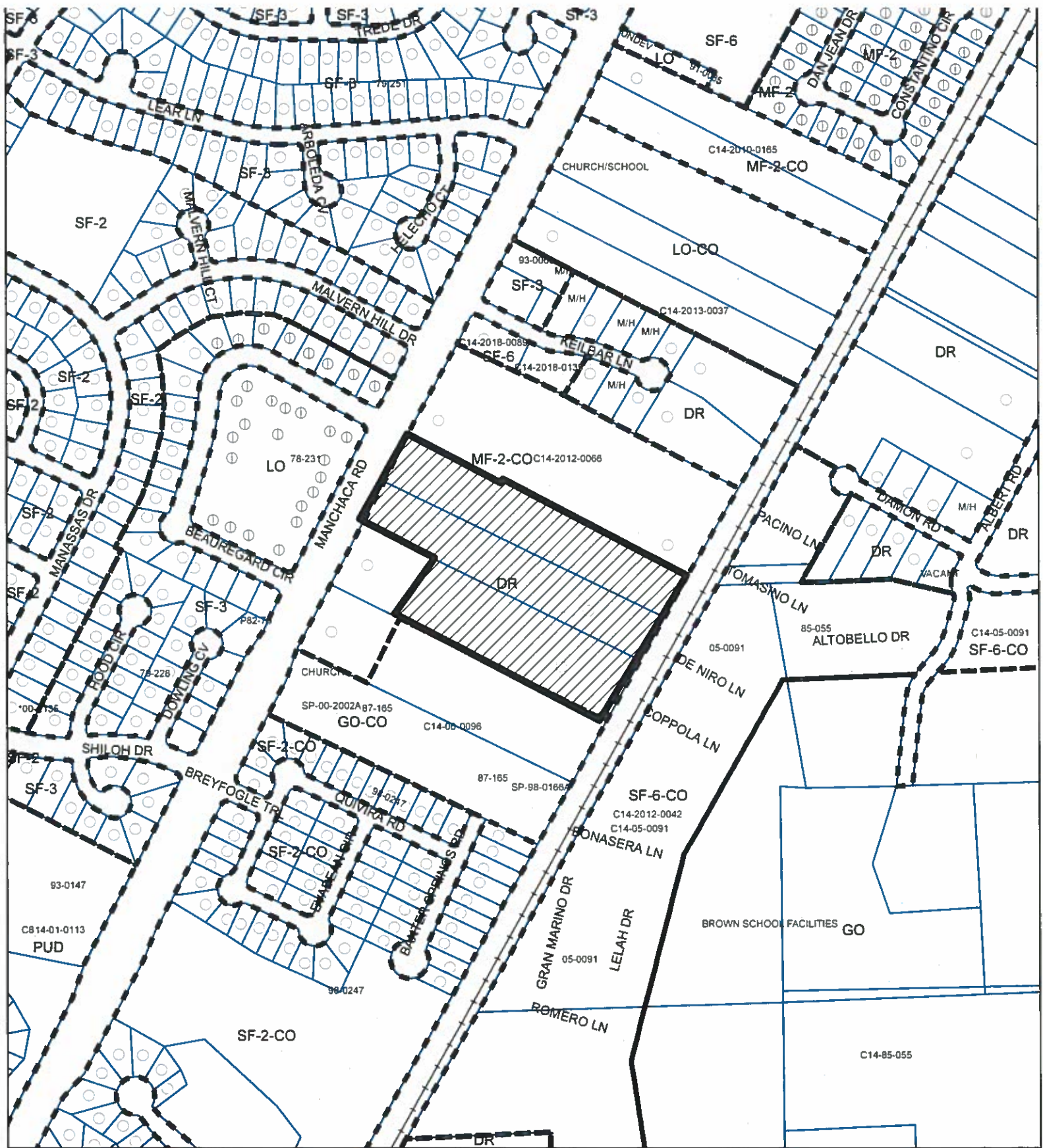
1. LEADS
 1. MADE PRIZE
 2. MADE PRIZE
 3. MADE PRIZE
 4. MADE PRIZE
 5. MADE PRIZE
 6. MADE PRIZE
 7. MADE PRIZE
 8. MADE PRIZE
 9. MADE PRIZE
 10. MADE PRIZE
 11. MADE PRIZE
 12. MADE PRIZE
 13. MADE PRIZE
 14. MADE PRIZE
 15. MADE PRIZE
 16. MADE PRIZE
 17. MADE PRIZE
 18. MADE PRIZE
 19. MADE PRIZE
 20. MADE PRIZE
 21. MADE PRIZE
 22. MADE PRIZE
 23. MADE PRIZE
 24. MADE PRIZE
 25. MADE PRIZE
 26. MADE PRIZE
 27. MADE PRIZE
 28. MADE PRIZE
 29. MADE PRIZE
 30. MADE PRIZE
 31. MADE PRIZE
 32. MADE PRIZE
 33. MADE PRIZE
 34. MADE PRIZE
 35. MADE PRIZE
 36. MADE PRIZE
 37. MADE PRIZE
 38. MADE PRIZE
 39. MADE PRIZE
 40. MADE PRIZE
 41. MADE PRIZE
 42. MADE PRIZE
 43. MADE PRIZE
 44. MADE PRIZE
 45. MADE PRIZE
 46. MADE PRIZE
 47. MADE PRIZE
 48. MADE PRIZE
 49. MADE PRIZE
 50. MADE PRIZE
 51. MADE PRIZE
 52. MADE PRIZE
 53. MADE PRIZE
 54. MADE PRIZE
 55. MADE PRIZE
 56. MADE PRIZE
 57. MADE PRIZE
 58. MADE PRIZE
 59. MADE PRIZE
 60. MADE PRIZE
 61. MADE PRIZE
 62. MADE PRIZE
 63. MADE PRIZE
 64. MADE PRIZE
 65. MADE PRIZE
 66. MADE PRIZE
 67. MADE PRIZE
 68. MADE PRIZE
 69. MADE PRIZE
 70. MADE PRIZE
 71. MADE PRIZE
 72. MADE PRIZE
 73. MADE PRIZE
 74. MADE PRIZE
 75. MADE PRIZE
 76. MADE PRIZE
 77. MADE PRIZE
 78. MADE PRIZE
 79. MADE PRIZE
 80. MADE PRIZE
 81. MADE PRIZE
 82. MADE PRIZE
 83. MADE PRIZE
 84. MADE PRIZE
 85. MADE PRIZE
 86. MADE PRIZE
 87. MADE PRIZE
 88. MADE PRIZE
 89. MADE PRIZE
 90. MADE PRIZE
 91. MADE PRIZE
 92. MADE PRIZE
 93. MADE PRIZE
 94. MADE PRIZE
 95. MADE PRIZE
 96. MADE PRIZE
 97. MADE PRIZE
 98. MADE PRIZE
 99. MADE PRIZE
 100. MADE PRIZE

[illegible][illegible][illegible][illegible]



SEE US at
 1995 International Fluid Power Exposition
 1121 F.W. Road • Booth #1010
 Ft. Worth, TX 76102

ALTA/INSP'S LAND TITLE SURVEY
OF 10,700 ACRES OUT OF THE
WILLIAM CANNON SURVEY NO. 19
CITY OF AUSTIN
TRAVIS COUNTY, TEXAS



N

SUBJECT TRACT

PENDING CASE

ZONING BOUNDARY

ZONING

ZONING CASE#: C14-2019-0121

EXHIBIT "B"

1" = 400'

This product is for informational purposes and may not have been prepared for or be suitable for legal, engineering, or surveying purposes. It does not represent an on-the-ground survey and represents only the approximate relative location of property boundaries.

This product has been produced by CTM for the sole purpose of geographic reference. No warranty is made by the City of Austin regarding specific accuracy or completeness.



Created: 9/9/2019