

OS3

TOTAL PARKLAND:
5.22 AC (227,508 SF)

1" = 100'-0"

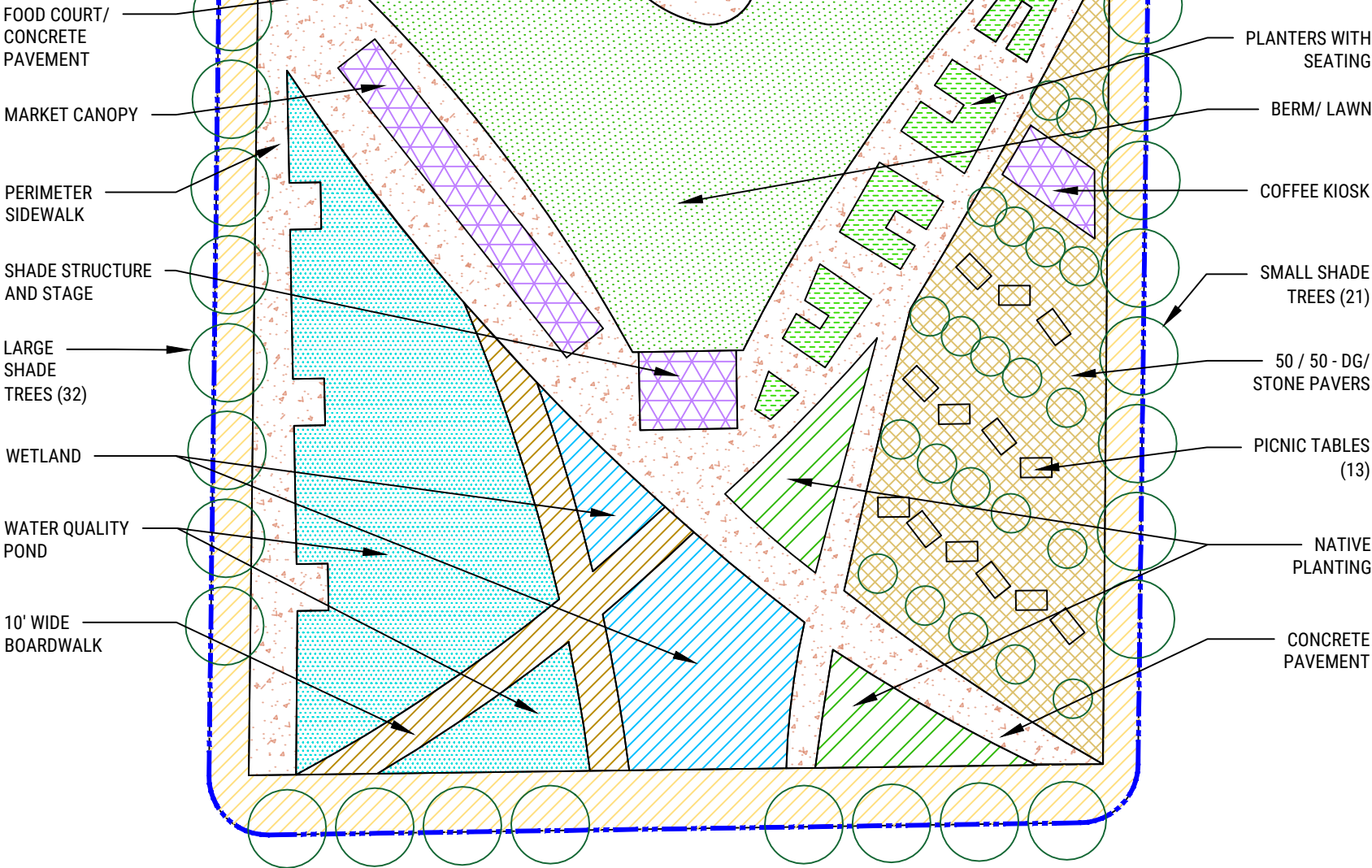
0

100'

200'

Code	Item	Area (SF)	Area (ac)	Quantity	Unit	Unit Cost	Total
OS 3	BOULDIN CREEK TRAIL	227,508	5.22		AC		
	Total Park	227,508	5.22				
	Parkland						
	Native Infill Embankment	187,545	4.31		SF		
	Native Infill Planting	6,832	0.16		SF		
	Stormwater Treatment Features	7,560	0.17		LF		
	Boardwalk Bridge #1 & Canopy Walk (14' wide)	3,278	0.08	234	LF		
	Boardwalk Bridge #2 (14' wide)	3,665	0.08	262	LF		
	Bouldin Creek Overlooks (4)	1,200	0.03		SF		
	DG Multi-use Trail (12' wide)	11,532	0.26	961	LF		
	Trail Bump Outs	2,051	0.05		SF		
	Existing Rim Rock	3,845	0.09		SF		
	Other						
	Site Prep / Demolition / Utility / Earthwork	36,118	0.83				
	Tree Protection and Care			40	EA		
	Tree Relocation and Care			10	EA		
	Selective Tree Plantings and Irrigation			40	EA		
	Lighting			36	EA		
	Site Furnishings			1	Allow		
	Fence and Pedestrian Gates (3)			1,339	LF		
	Public Art Allowance			1	LS		

EAST BARTON SPRINGS ROAD



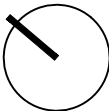
**CROCKETT SQUARE PLAZA
TAKE-OFF QUANTITIES**

OS4



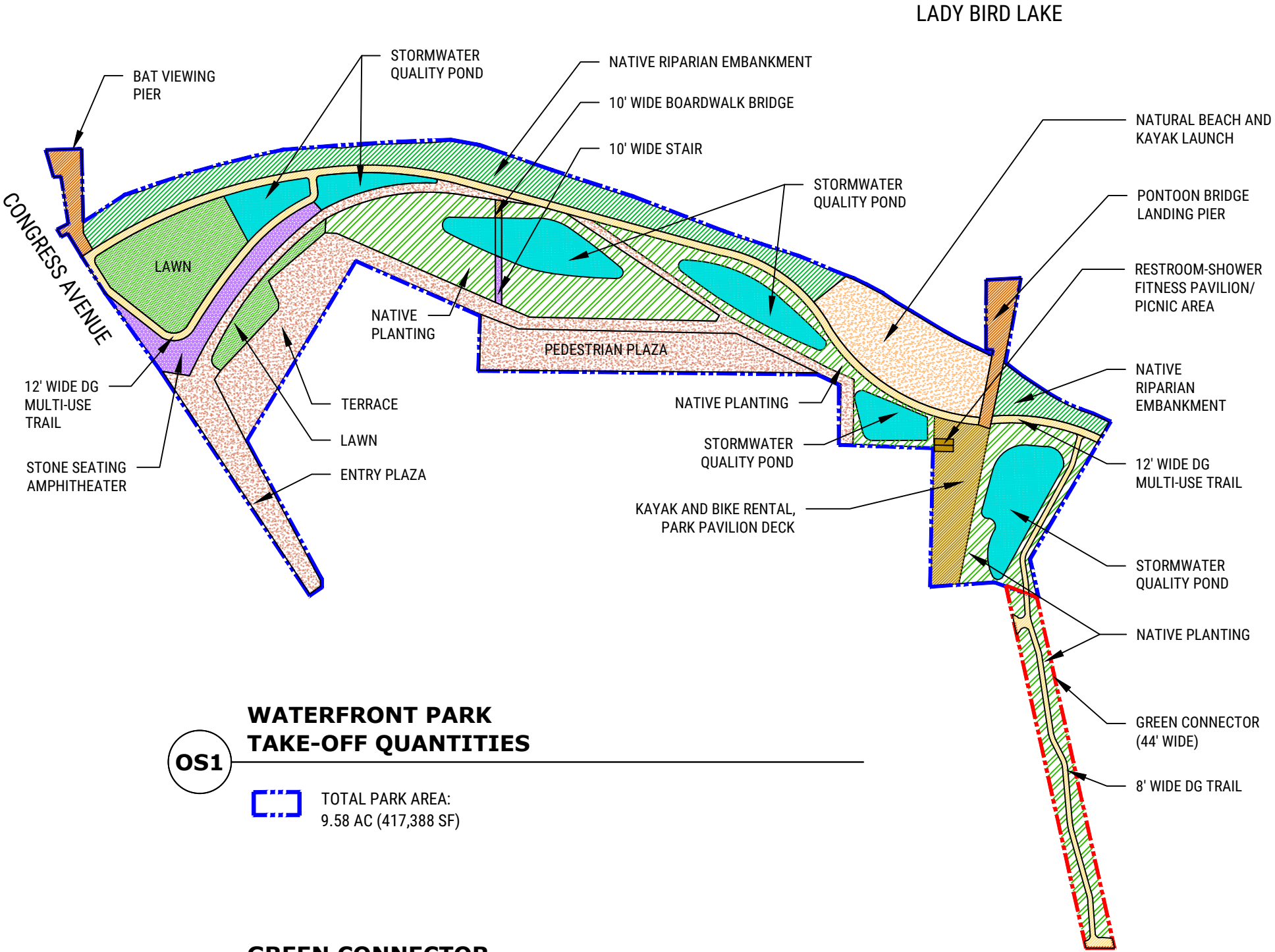
TOTAL PARKLAND / PLAZA:
1.29 AC (56,100 SF)

1" = 40'-0"



Code	Item	Area (SF)	Area (ac)	Quantity	Unit	Unit Cost	Total
OS 4	CROCKETT SQUARE	56,100	1.29		AC		
	Total Plaza	56,100	1.29				
	Plaza						
	Large Shade Tree Plantings with Irrigation Bubblers			32.0	EA		
	Small Shade Tree Plantings with Irrigation Bubblers			21.0	EA		
	Native Plantings	1,659	0.04		SF		
	Lawn / Berm	9,756	0.22		SF		
	Wetlands	2,832	0.07		Allow		
	Water Quality Ponds	7,771	0.18		SF		
	10' wide Boardwalk	2,116	0.05		SF		
	Planters with Seating	1,403	0.03		SF		
	Concrete Pavement	10,645	0.24		SF		
	DG / Stone Pavers (50/50)	7,703	0.18		SF		
	Perimeter Sidewalk	9,577	0.22		LF		
	Amenities:						
	Market Canopy	1,135	0.03		SF		
	Shade Structure and Stage on Square	500	0.01		SF		
	Picnic Tables			13.0	EA		
	Food Court	649	0.01		SF		
	Coffee Kiosk	354	0.01		SF		
	Other						
	Site Prep / Demolition / Utility / Earthwork	56,100	1.29		SF		
	Irrigation (Lawn and Native Plantings)	12,818	0.29		SF		

Code	Item	Area (SF)	Area (ac)	Quantity	Unit	Unit Cost	Total
OS 1	WATERFRONT PARK & PLAZAS	417,388	9.58		AC		
	Total Park	304,587	6.99	73%			
	Total Plazas / Hardscape / Other Open Space	112,801	2.59	27%			
	Park						
	Native Riparian Planting on Embankment	54,400	1.25		SF		
	Other Native Plantings	85,533	1.96		SF		
	Lawn	35,879	0.82		SF		
	Natural Beach and Kayak Launch	30,041	0.69		SF		
	Stormwater Quality Ponds / Biofiltration Areas / Bioswale Connectors	58,815	1.35		SF		
	12' wide Trails (including sloped trails where handrails are required)	26,446	0.61	2,203	LF		
	10' wide Boardwalk Bridge across Stormwater Quality Pond	863	0.02	86	LF		
	Bat Viewing Pier	5,510	0.13		SF		
	Pontoon Bridge Landing Pier (Waller Creek Connection)	7,100	0.16		SF		
	Plazas / Hardscape / Other Open Space						
	10' wide Stairs to Boardwalk Bridge	740	0.02	74	LF		
	Entry Plaza with Interpretive Features	22,330	0.51		SF		
	Pedestrian Plaza	24,971	0.57		SF		
	Terrace	39,877	0.92		SF		
	Stone Seating Amphitheater	10,861	0.25		SF		
	Kayak and Bike Rental Deck	14,021	0.32		SF		
	Other						
	Site Prep / Demolition / Utility / Earthwork	417,388	9.58		SF		
	Tree Plantings with Irrigation Bubblers			100	EA		
	Heritage Tree Relocation			22	EA		
	Tree Protection and Care			100	EA		
	Irrigation (Lawn and Other Native)	121,412	2.79		SF		
	Trail Amenities / Site Furniture			1	Allow		
	Bat Viewing Signage				Allow		
	Public Art Allowance			1	LS		
	Lighting and Electrical			1	LS		
	Power and AV			1	LS		
OS 2	GREEN CONNECTOR - (44' Wide)	25,419	0.58		SF		
	Open Space (review all)						
	Native Planting	19,856	0.46		SF		
	8' Wide DG Trail	5,563	0.13		SF		
	Other (review all)						
	Site Prep / Demolition / Utility / Earthwork	25,419	0.58		SF		
	Irrigation (Native Plantings)	19,856	0.46		SF		
	Lighting and Electrical						
	Power and AV						
	Trail Amenities / Site Furniture						



OS1

TOTAL PARK AREA:
9.58 AC (417,388 SF)

OS2

TOTAL GREEN CONNECTOR:
0.58 AC (25,419 SF)

