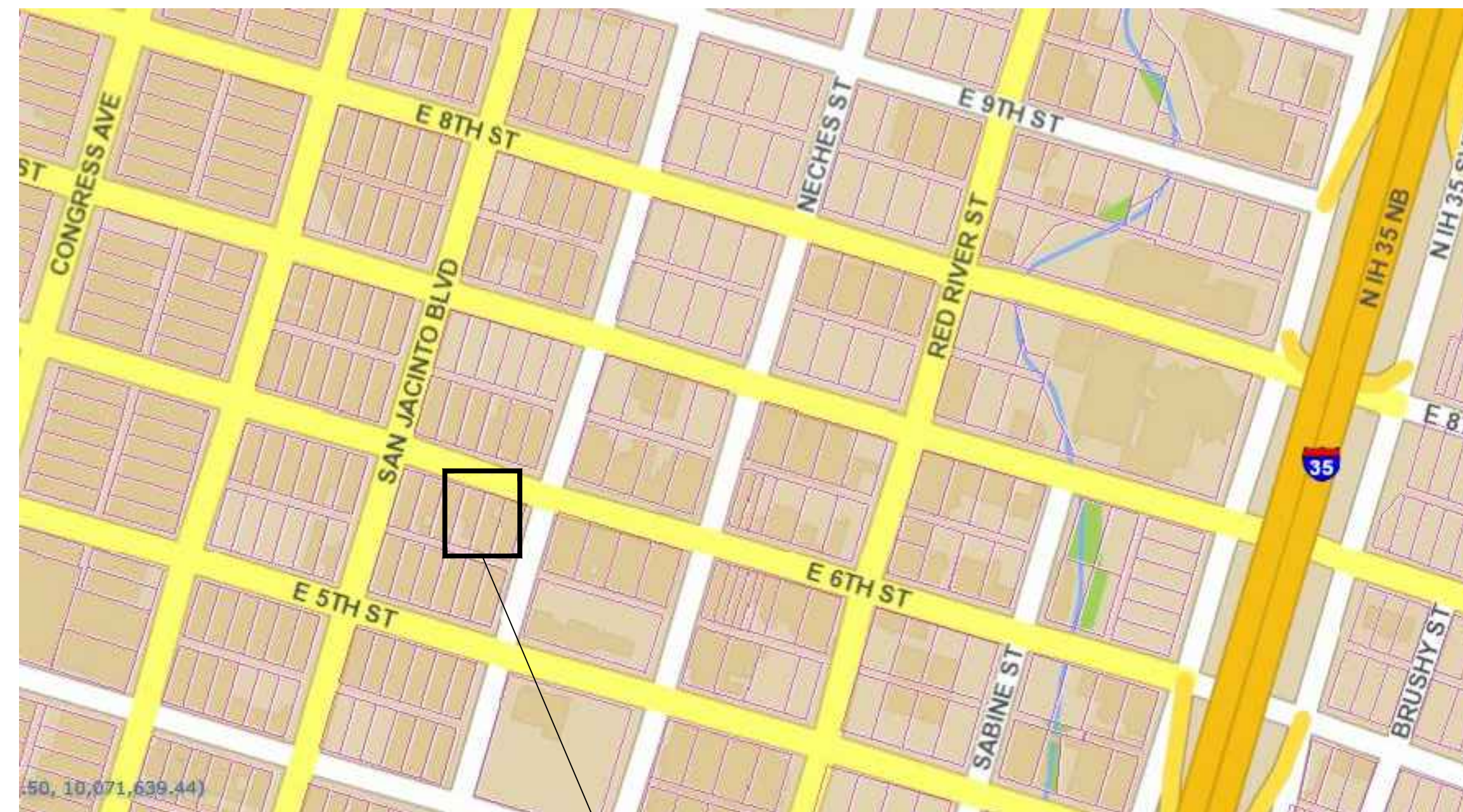


311 deck addition

311 E. 6th st.
Austin, TX. 78701



Location

Space Planning/Engineering -

Facilities Services of Austin
503 E. 6th. st., suite B
Austin, TX. 78701
512-481-0181
ss@facilityaustin.com
www.facilityaustin.com

Steve Simon, CFM

Lester Germanio, Stuctural

List of Drawings

Cover Sheet

- A1 - Existing and Proposed Floorplan
- A2 - Proposed 311 and 313
- A3 - Dimensions and scope of work



**Facilities
Services
of Austin**

503 E. 6th st., suite B
c/o PO Box 684671
Austin, TX. 78768
512-481-0181

The dimensions represented by this plan are based on information and/or architectural drawings submitted to Facilities Services of Austin by the client or his architect. FSA will not be responsible for the accuracy of the architectural drawing in the event that the submitted information and/or drawing do not conform with the actual field dimensions and/ or conditions.

This document, the ideas and designs incorporated herein are and shall remain the property of FSA. This document is not to be used in whole or in part, for other than the original intended use, nor is it to be assigned to any third party without written permission from FSA. Copyright FSA - 2004.

**311 E. 6th st.
deck addition**

REVISION -

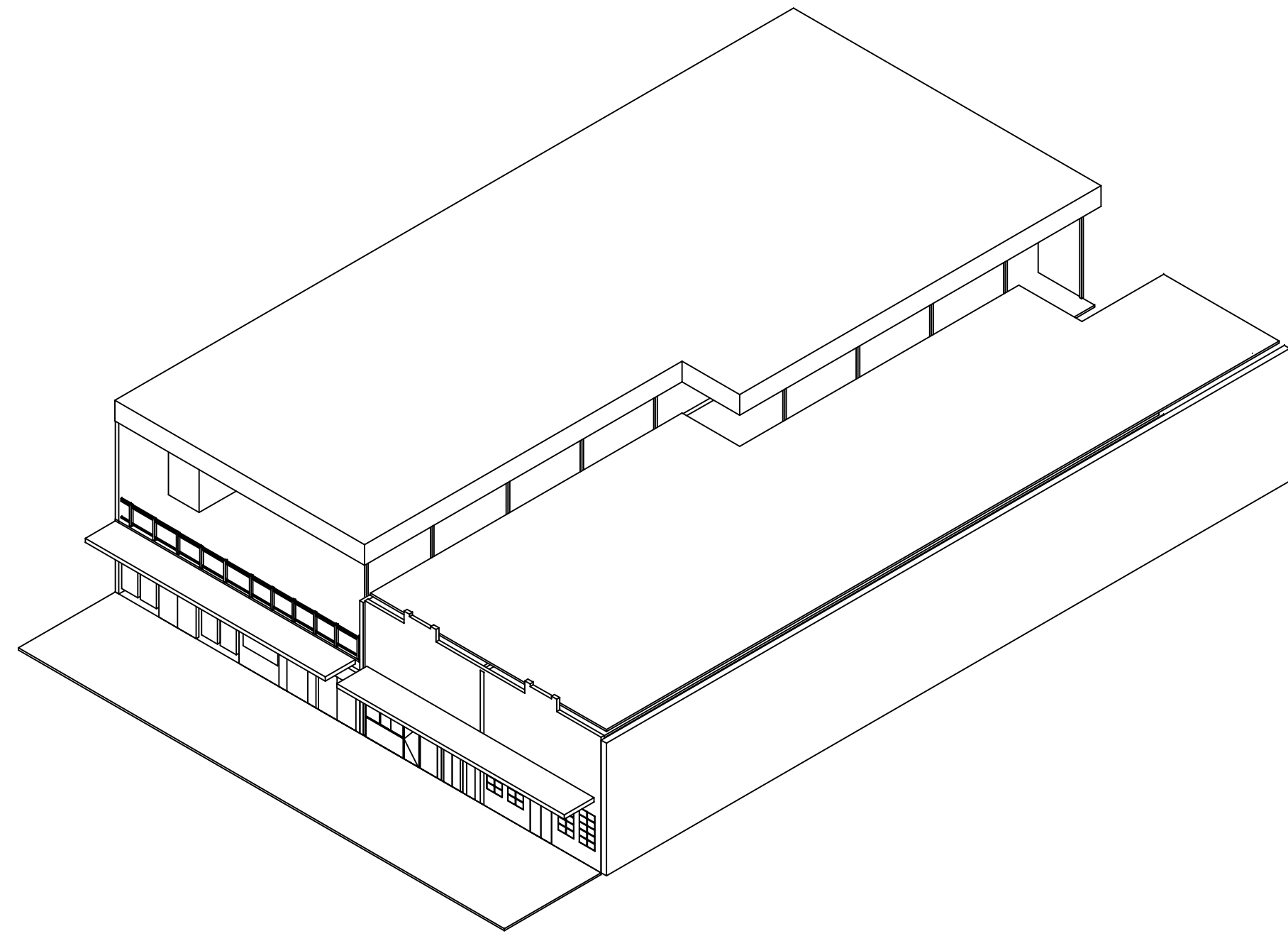
DR.BY. - SMS

DATE - 11/1/19

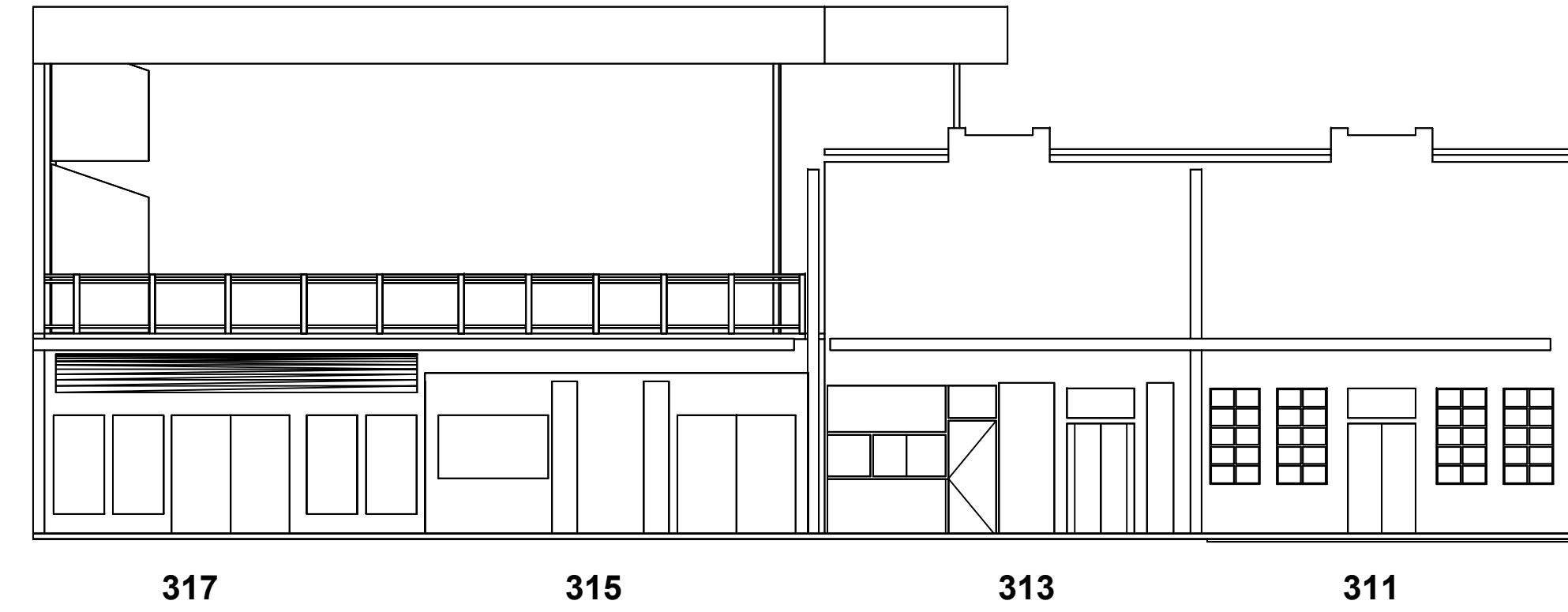
SHEET -

**Cover
Sheet**

311 - 317 E. 6th. Existing

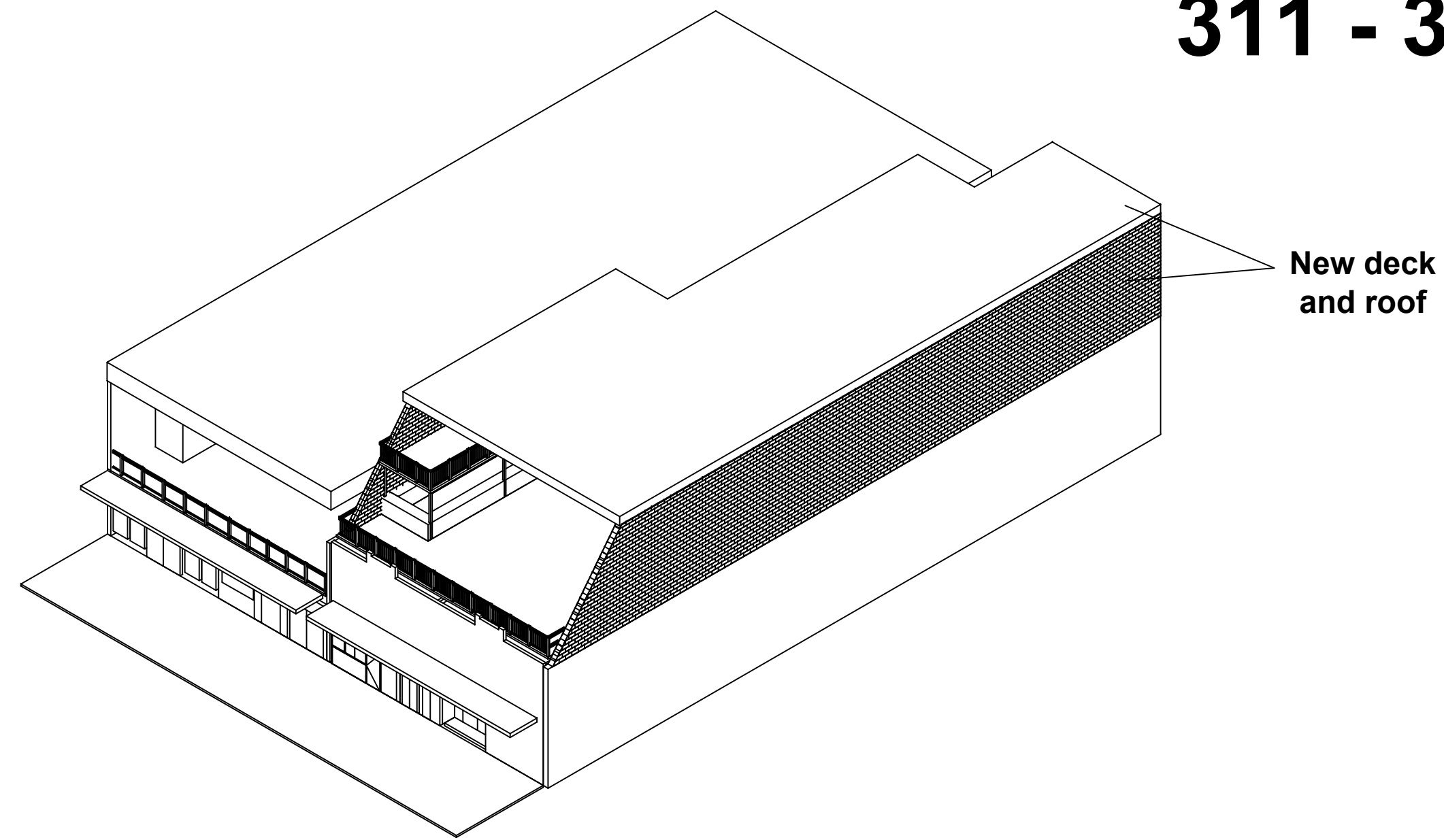


○ Iso view



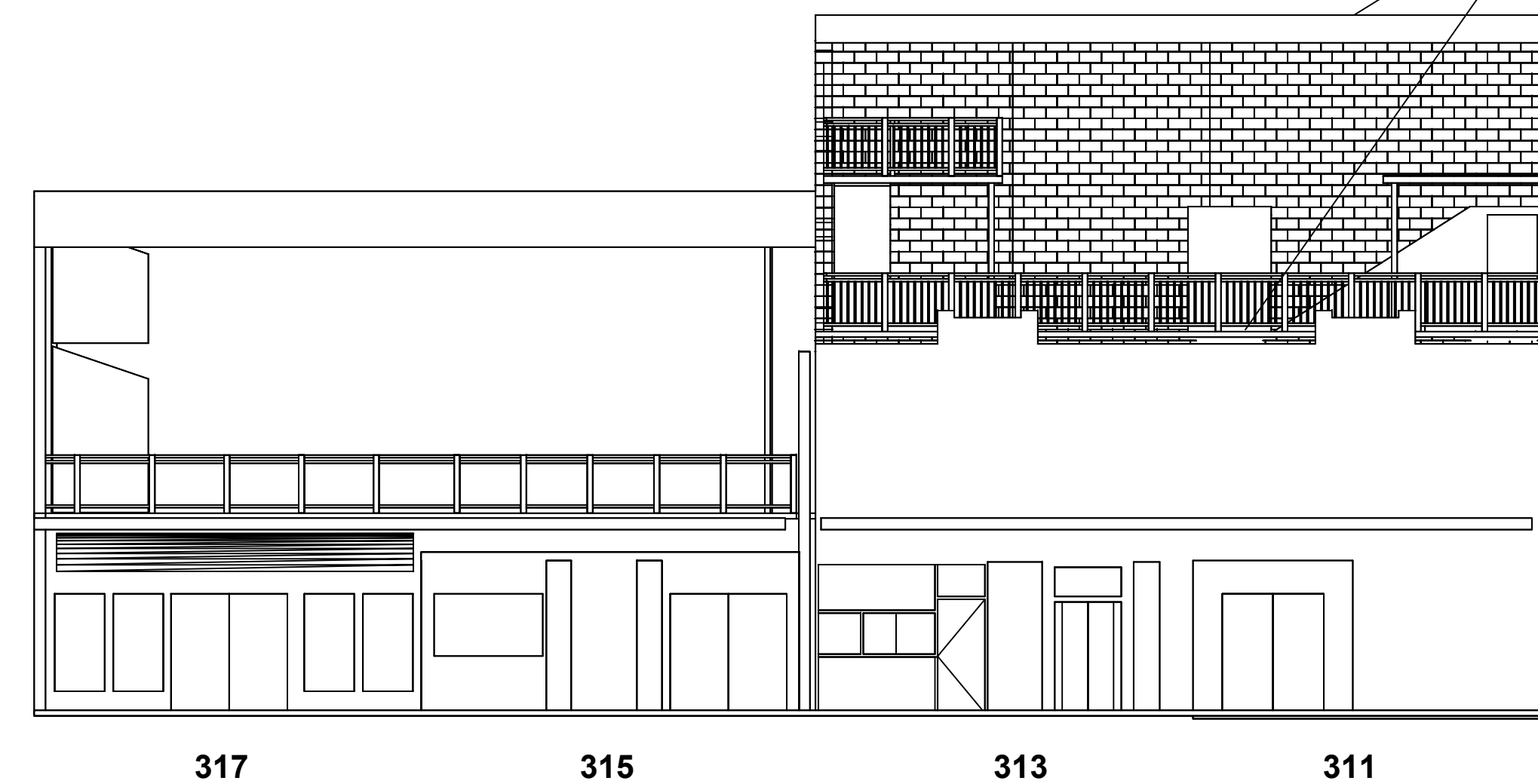
○ Front view

311 - 317 E. 6th. Proposed



New deck and roof

○ Iso view



New deck and roof

○ Front view



Facilities Services of Austin

503 E. 6th st., suite B
c/o PO Box 684671
Austin, TX. 78768
512-481-0181

The dimensions represented by this plan are based on information and/or architectural drawings submitted to Facilities Services of Austin by the client or his architect. FSA will not be responsible for the accuracy of the architectural drawing in the event that the submitted information and/or drawing do not conform with the actual field dimensions and/or conditions.

This document, the ideas and designs incorporated herein are and shall remain the property of FSA. This document is not to be used in whole or in part, for other than the original intended use, nor is it to be assigned to any third party without written permission from FSA. Copyright FSA - 2004.

**311 E. 6th st.
deck addition**

REVISION -

DR.BY. - SMS

DATE - 11/1/19

SHEET -

**A1
Existing &
Proposed**

**311 E. 6th st.
deck addition**

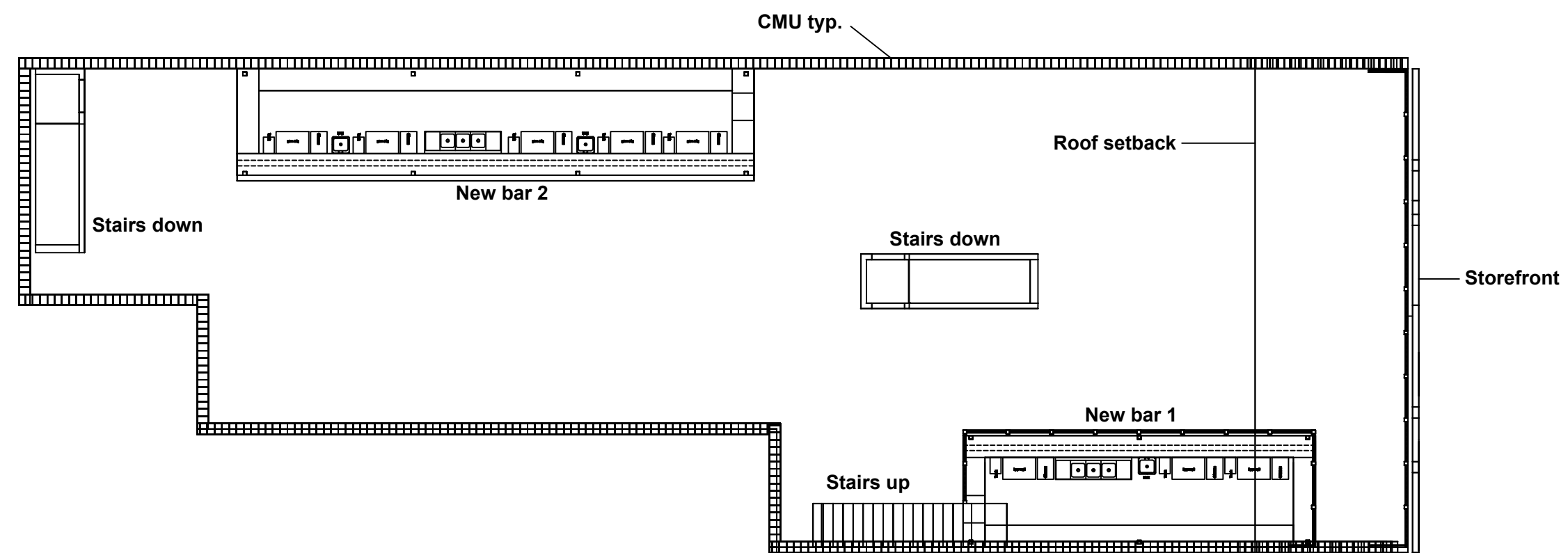
REVISION -

DR. BY. - SMS

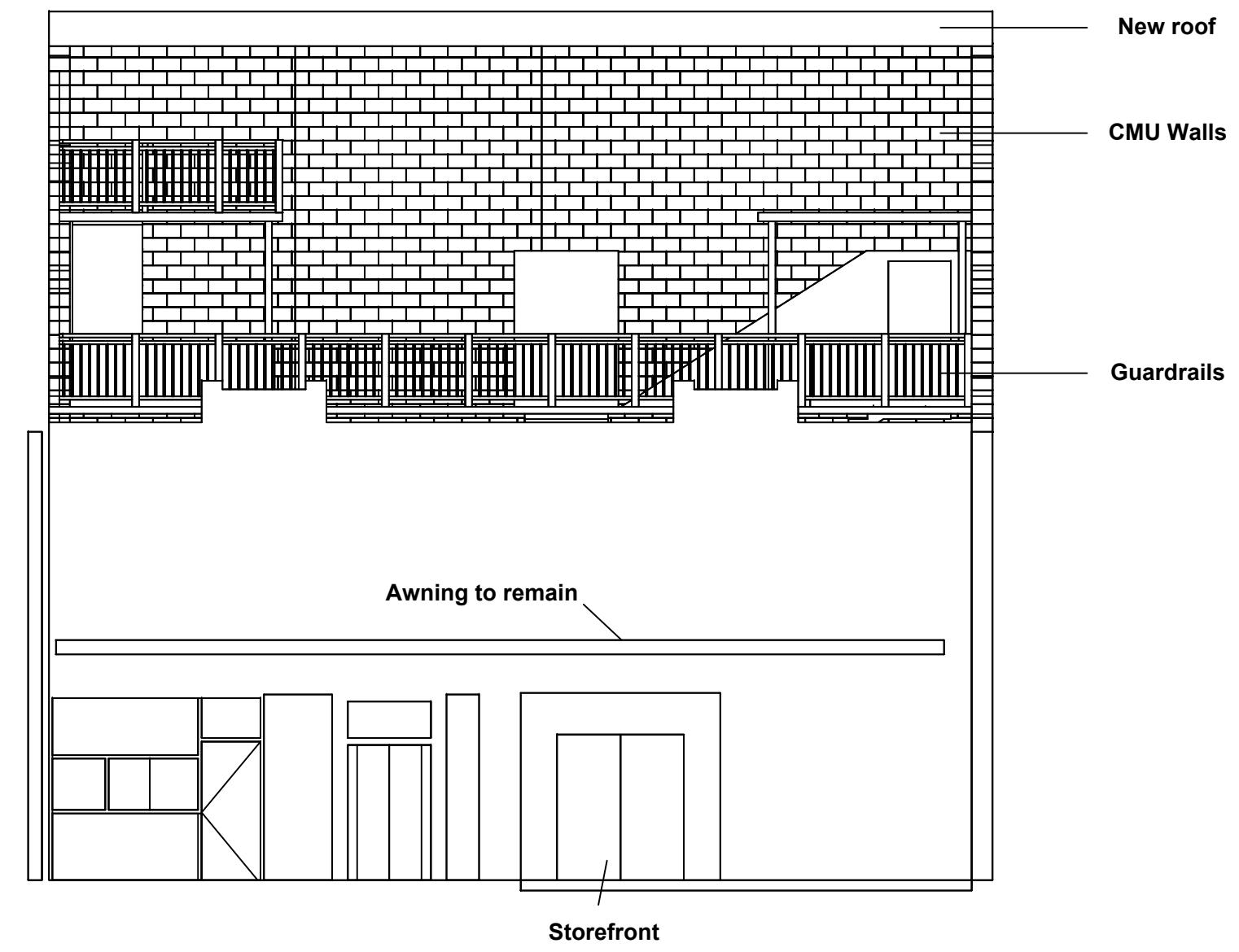
DATE - 11/1/19

SHEET -

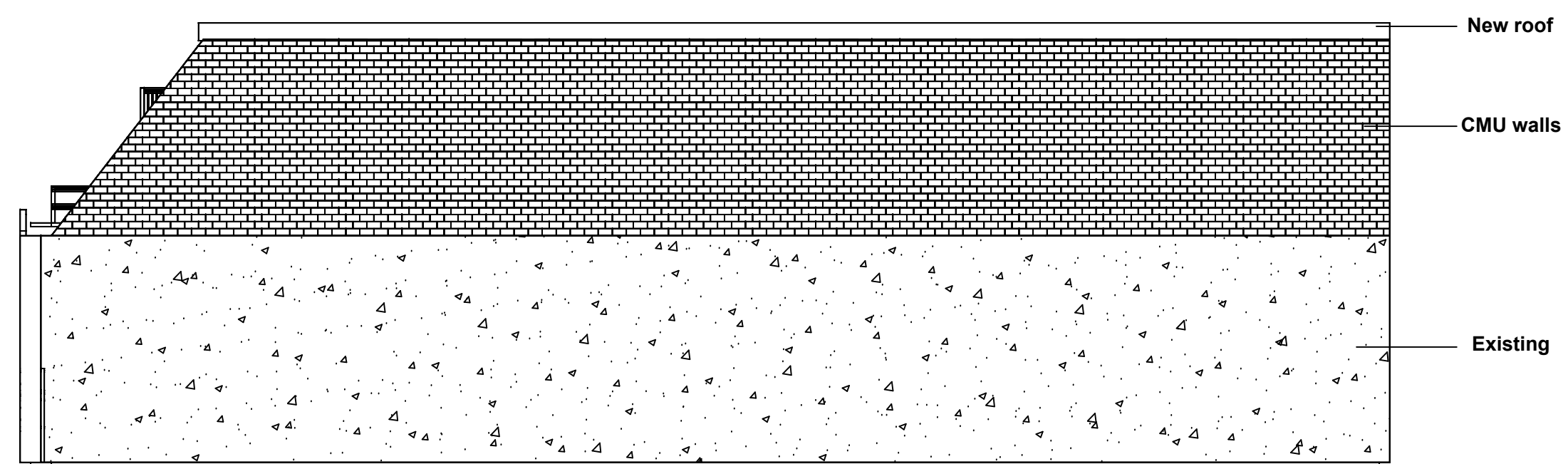
**A2
311&313
Proposed**



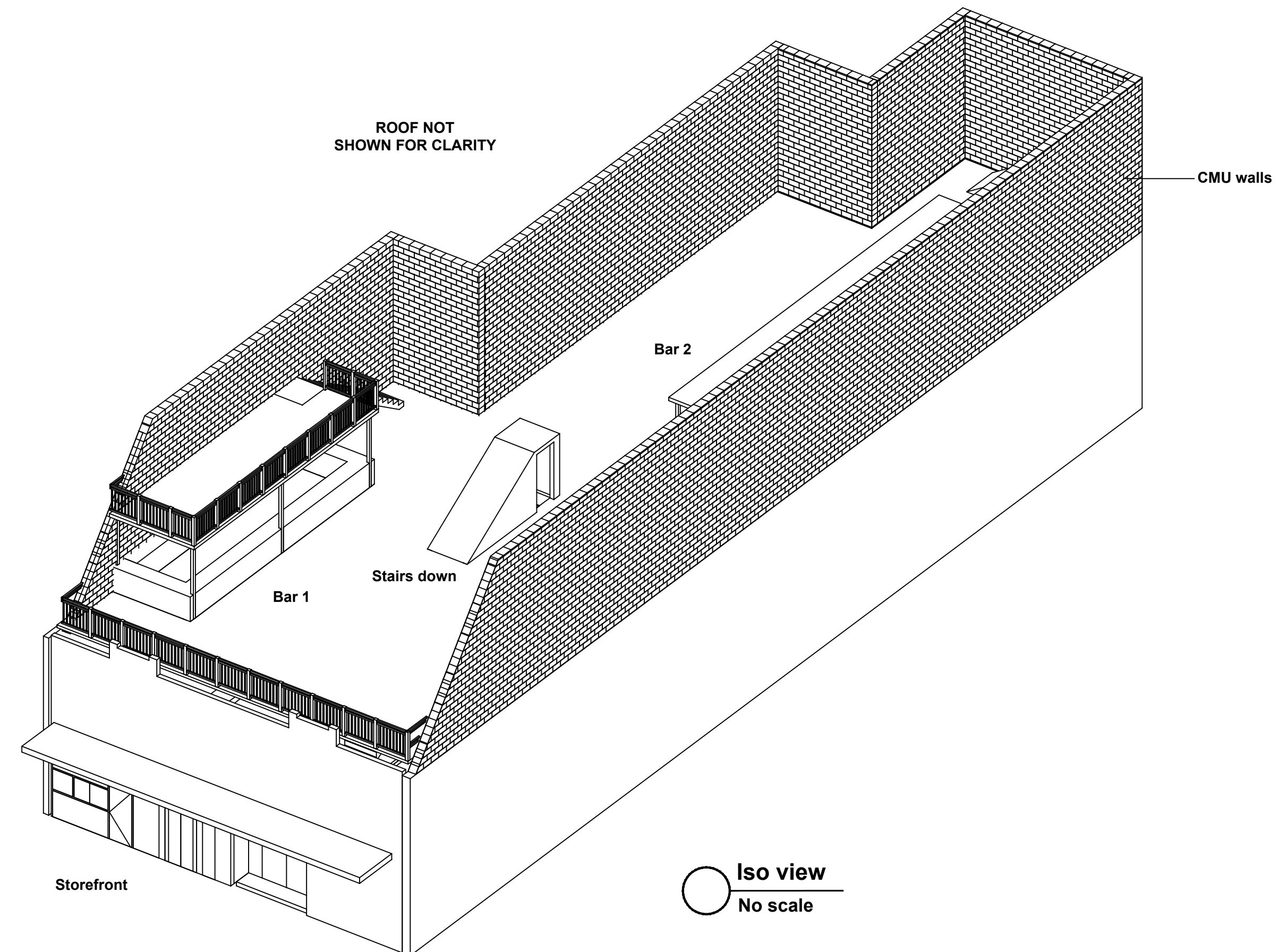
Plan view
No scale



Front view
No scale



Side view
No scale



Iso view
No scale

The dimensions represented by this plan are based on information and/or architectural drawings submitted to Facilities Services of Austin by the client or his architect. FSA will not be responsible for the accuracy of the architectural drawing in the event that the submitted information and/or drawing do not conform with the actual field dimensions and/or conditions.

This document, the ideas and designs incorporated herein are and shall remain the property of FSA. This document is not to be used in whole or in part, for other than the original intended use, nor is it to be assigned to any third party without written permission from FSA. Copyright FSA - 2004.

**311 E. 6th st.
deck addition**

REVISION -

DR.BY. - SMS

DATE - 11/1/19

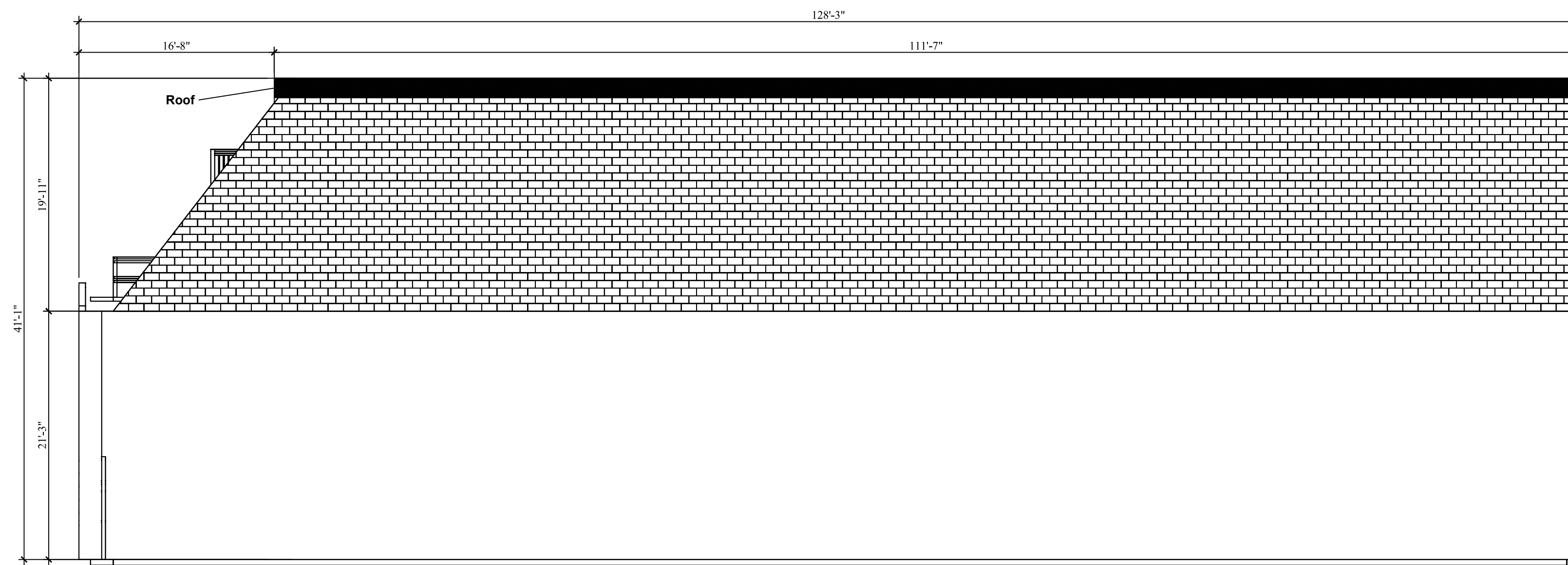
SHEET -

**A3
Dimensions**

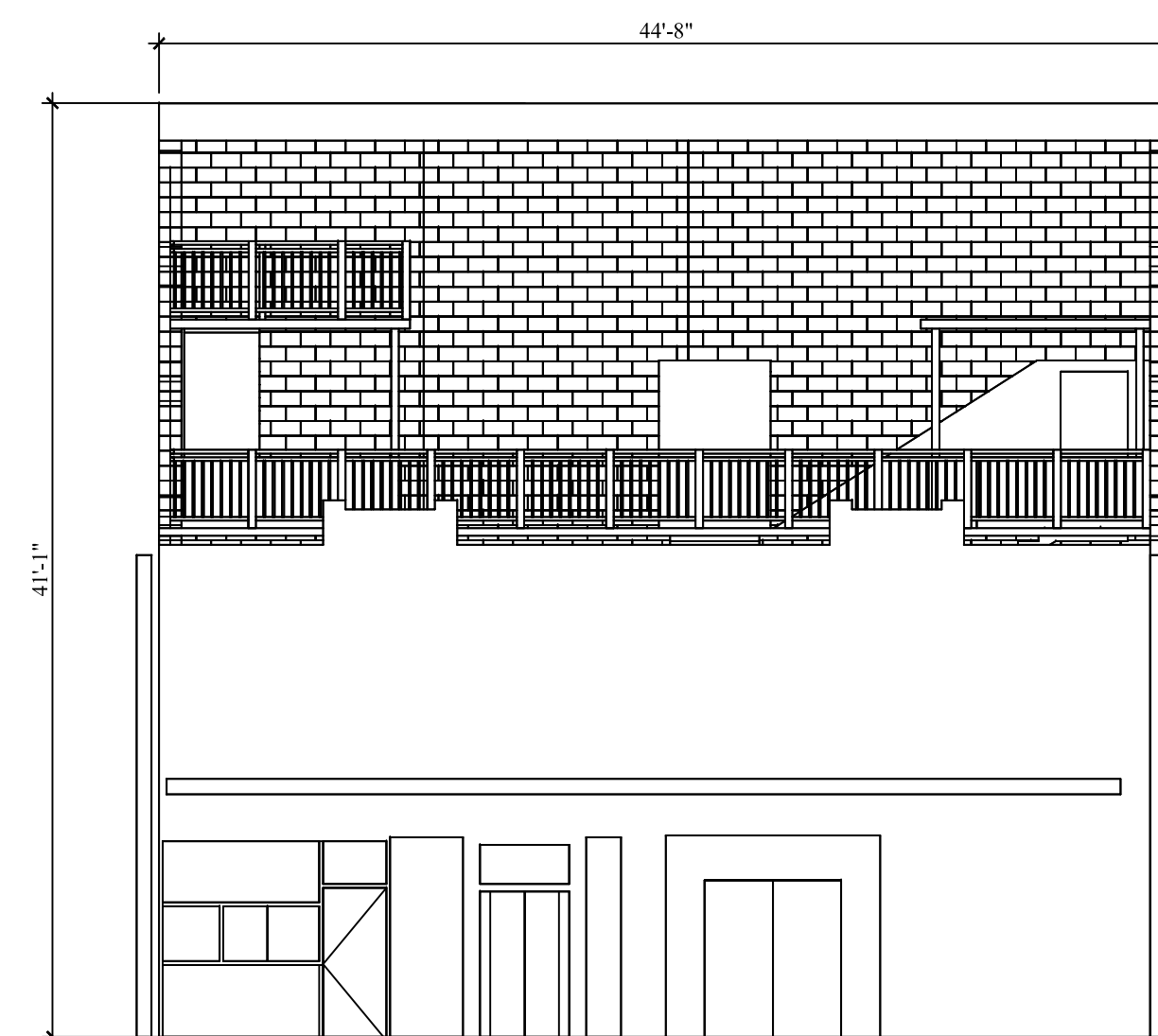
Scope of work

1. Construct deck above the existing 311 building structure.
2. Build 2 bars.
3. Space to have 2 exits.
4. Space to be fire sprinklered.
5. New guardrails at 42" above deck.
6. Roof to be setback greater than 15' from storefront.

See Structural drawings for further details.



○ Side view - roof setback
1/8" = 1'



○ Front view
1/8" = 1'