

SUBDIVISION REVIEW SHEET**CASE NO.:** C8J-2018-0091.1A**Z.A.P. DATE:** 4/21/2020**SUBDIVISION NAME:** Turners Crossing North Phase 1**AREA:** 118.861 acres**LOT(S):** 327**OWNER/APPLICANT:** Meritage Homes of Texas, LLC (Matthew Scrivener)**AGENT:** Kimley-Horn and Associates, Inc. (Josh Miksch)**ADDRESS OF SUBDIVISION:** 12743 N Turnersville Road**GRIDS:** G-8**COUNTY:** Travis**WATERSHED:** Rinard Creek**JURISDICTION:** 2-Mile
ETJ**EXISTING ZONING:** N/A**MUD:** N/A**PROPOSED LAND USE:** Single Family, Commercial, Drainage, Landscape, Park**ADMINISTRATIVE WAIVERS:** N/A**VARIANCES:** None**SIDEWALKS:** Sidewalks will be provided on all internal streets.**DEPARTMENT COMMENTS:** The request is for approval of Turners Crossing North Phase One Subdivision consisting of 327 lots on 118.861 acres. Water and wastewater will be provided by the City of Austin.**STAFF RECOMMENDATION:** The staff recommends approval of this final plat. This plan meets all applicable County, State and City of Austin LDC requirements.**ZONING AND PLATTING COMMISSION ACTION:****CASE MANAGER:** Sarah Sumner**PHONE:** 512-854-7687Email address: sarah.sumner@traviscountytexas.gov

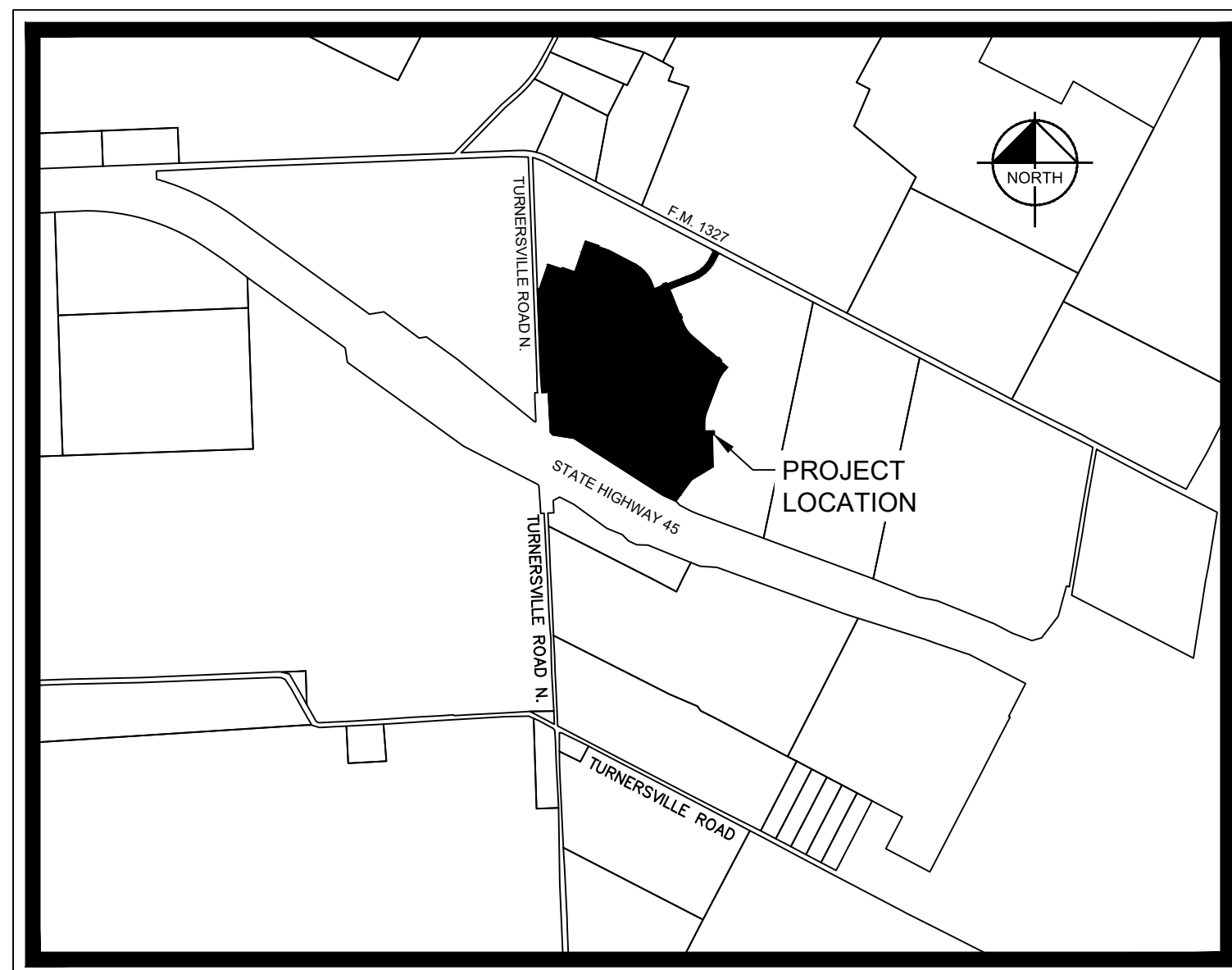
TRAVIS COUNTY CONSUMER PROTECTION NOTICE FOR HOMEBUYERS

IF YOU ARE BUYING A LOT OR HOME, YOU SHOULD DETERMINE WHETHER IT IS INSIDE OR OUTSIDE THE CITY LIMITS.

DEPENDING ON STATE LAW AND OTHER FACTORS, LAND OUTSIDE THE CITY LIMITS MAY BE SUBJECT TO FEWER LOCAL GOVERNMENT CONTROLS OVER THE DEVELOPMENT AND USE OF LAND THAN INSIDE THE CITY LIMITS.

BECAUSE OF THIS, LOCAL GOVERNMENT MAY NOT BE ABLE TO RESTRICT THE NATURE OR EXTENT OF DEVELOPMENT NEAR THE LOT OR HOME NOR PROHIBIT NEARBY LAND USES THAT ARE INCOMPATIBLE WITH A RESIDENTIAL NEIGHBORHOOD.

THIS CAN AFFECT THE VALUE OF YOUR PROPERTY. TRAVIS COUNTY REQUIRES THIS NOTICE TO BE PLACED ON SUBDIVISION PLATS. IT IS NOT A STATEMENT OR REPRESENTATION OF THE OWNER OF THE PROPERTY, THE SUBDIVIDER, OR THEIR REPRESENTATIVES.



VICINITY MAP

SCALE: 1" = 2,000'

OWNER/DEVELOPER:
MERITAGE HOMES OF TEXAS, LLC
8920 BUSINESS PARK DRIVE STE. 350
AUSTIN, TEXAS 78759
TEL: (512) 610-6409

TAYLOR MORRISON OF TEXAS, INC.
11200 LAKELINE BOULEVARD, STE 150A
AUSTIN, TEXAS 78717
TEL: (512) 549-6838

TRENDMAKER HOMES, INC.
13640 BRIARWICK DRIVE, STE 170
AUSTIN, TEXAS 78729
TEL: (281) 675-3335

CIVIL ENGINEER:
KIMLEY-HORN AND ASSOCIATES,
INC.
10814 JOLLYVILLE ROAD,
AVALLON IV, SUITE 200
AUSTIN, TEXAS 78759
TBPE FIRM REGISTRATION NO.
F-928
PH: (512) 418-1771 FAX: (512)
418-1791
CONTACT: JOSHUA W. MIKSCH,
P.E.

SURVEYOR:
KIMLEY-HORN AND ASSOCIATES,
INC.
LAND SURVEYOR NO. 6754
601 NW LOOP 410, SUITE 350
SAN ANTONIO, TEXAS 78216
PH: (210) 541-9166
CONTACT: ABEL P STENDAHL,
R.P.L.S.

FINAL PLAT TURNER'S CROSSING NORTH - PHASE 1

118.861 ACRES

OUT OF A CALLED 245.832 ACRE TRACT 1
CONVEYED TO MERITAGE HOMES OF TEXAS, LLC,
TAYLOR MORRISON OF TEXAS, INC., AND
TRENDMAKER HOMES, INC.
IN DOC. NO. 2019099240, OPRTC
ELIJAH CAPLES SURVEY NO. 7, ABSTRACT NO. 155
TRAVIS COUNTY, TEXAS

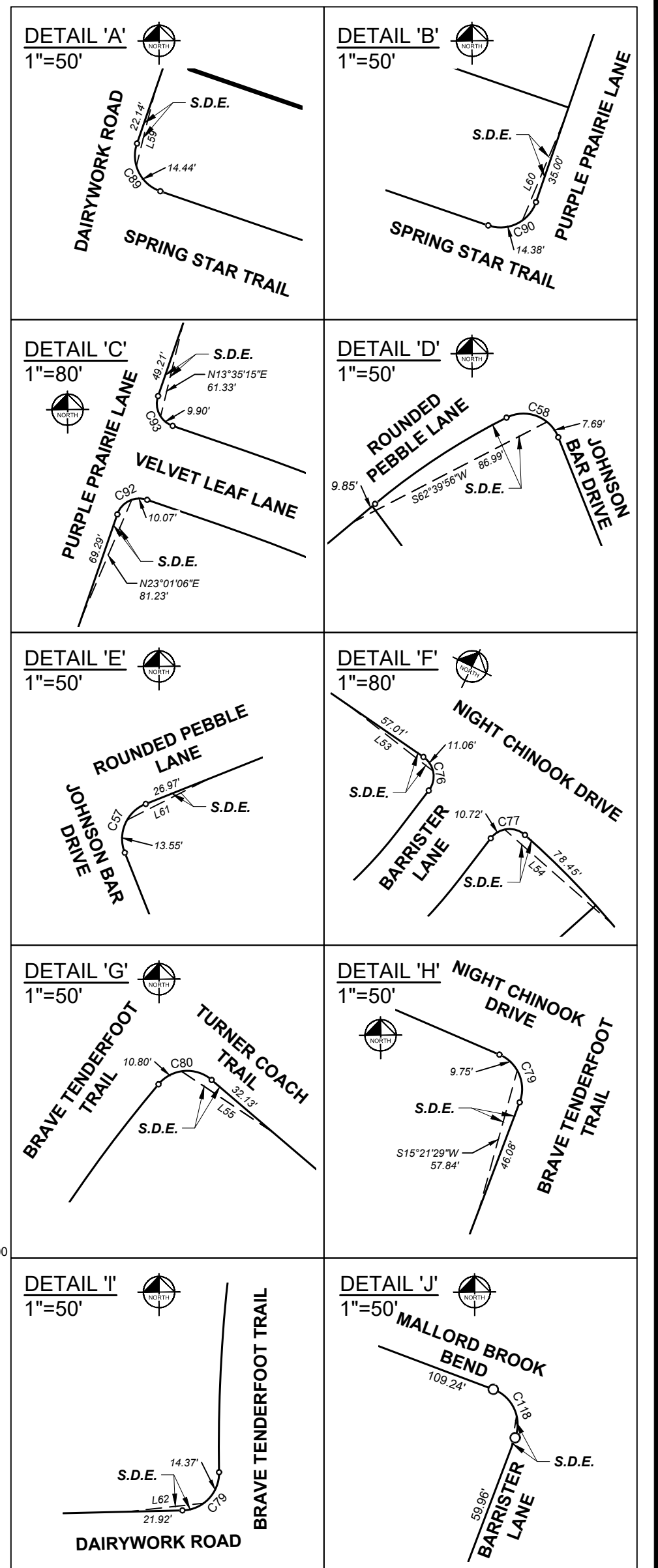
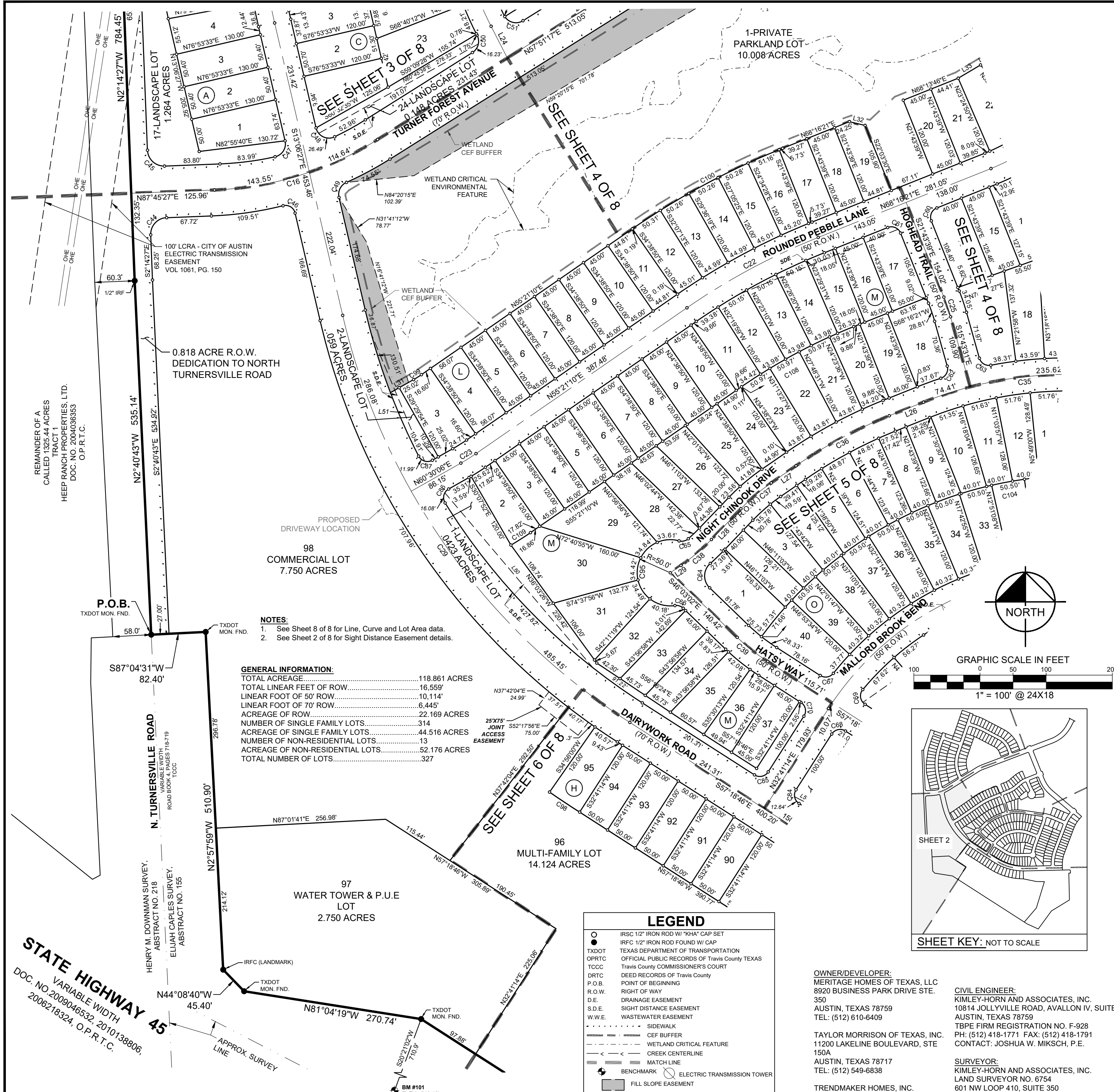
Kimley»Horn

601 NW Loop 410, Suite 350
San Antonio, Texas 78216

FIRM # 10193973

Tel. No. (210) 541-9166
www.kimley-horn.com

Scale 1" = 2000'	Drawn by APS	Checked by JGM	Date 11/12/19	Project No. 067783111	Sheet No. 1 OF 8
---------------------	-----------------	-------------------	------------------	--------------------------	---------------------



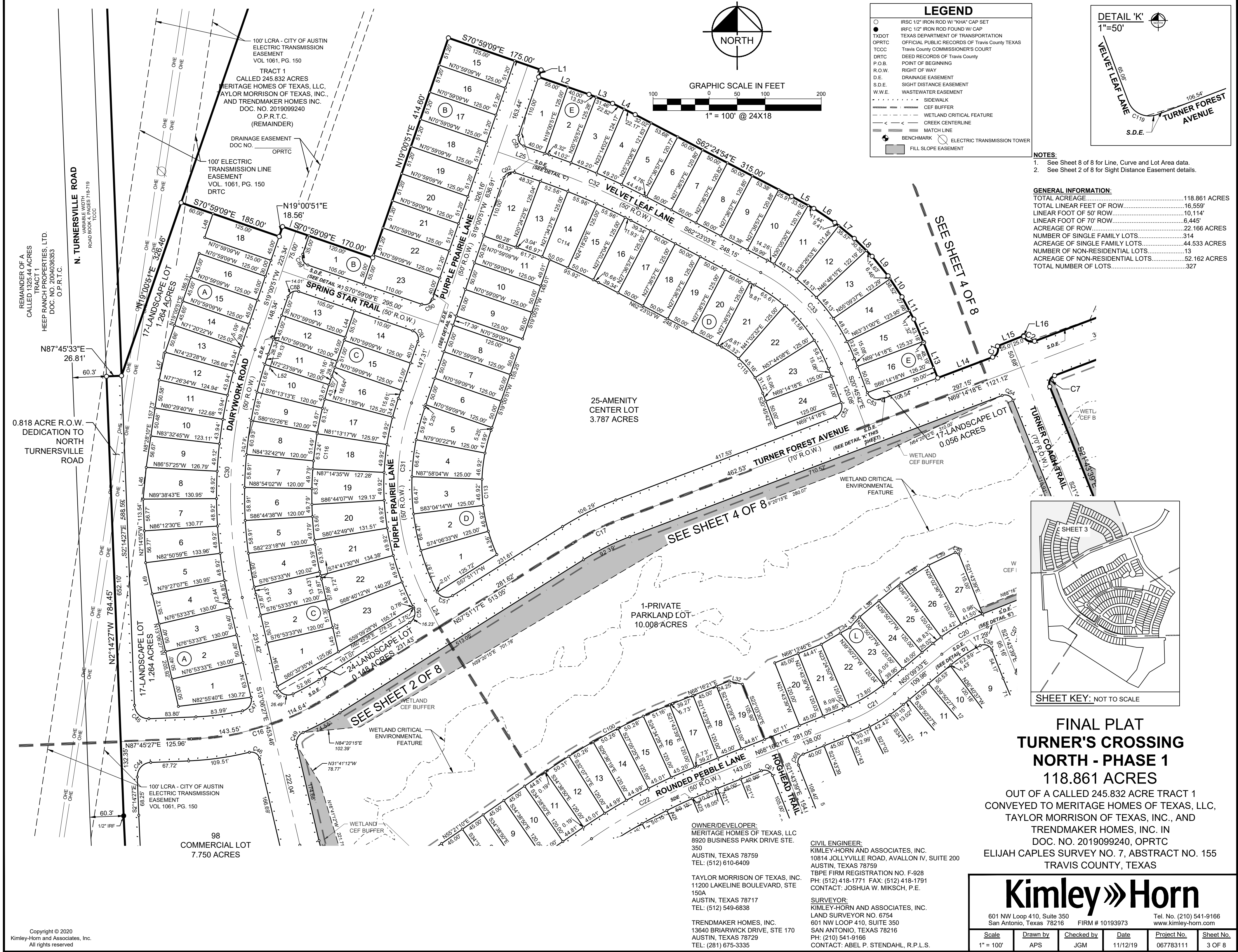
**FINAL PLAT
TURNER'S CROSSING
NORTH - PHASE 1
118.861 ACRES**

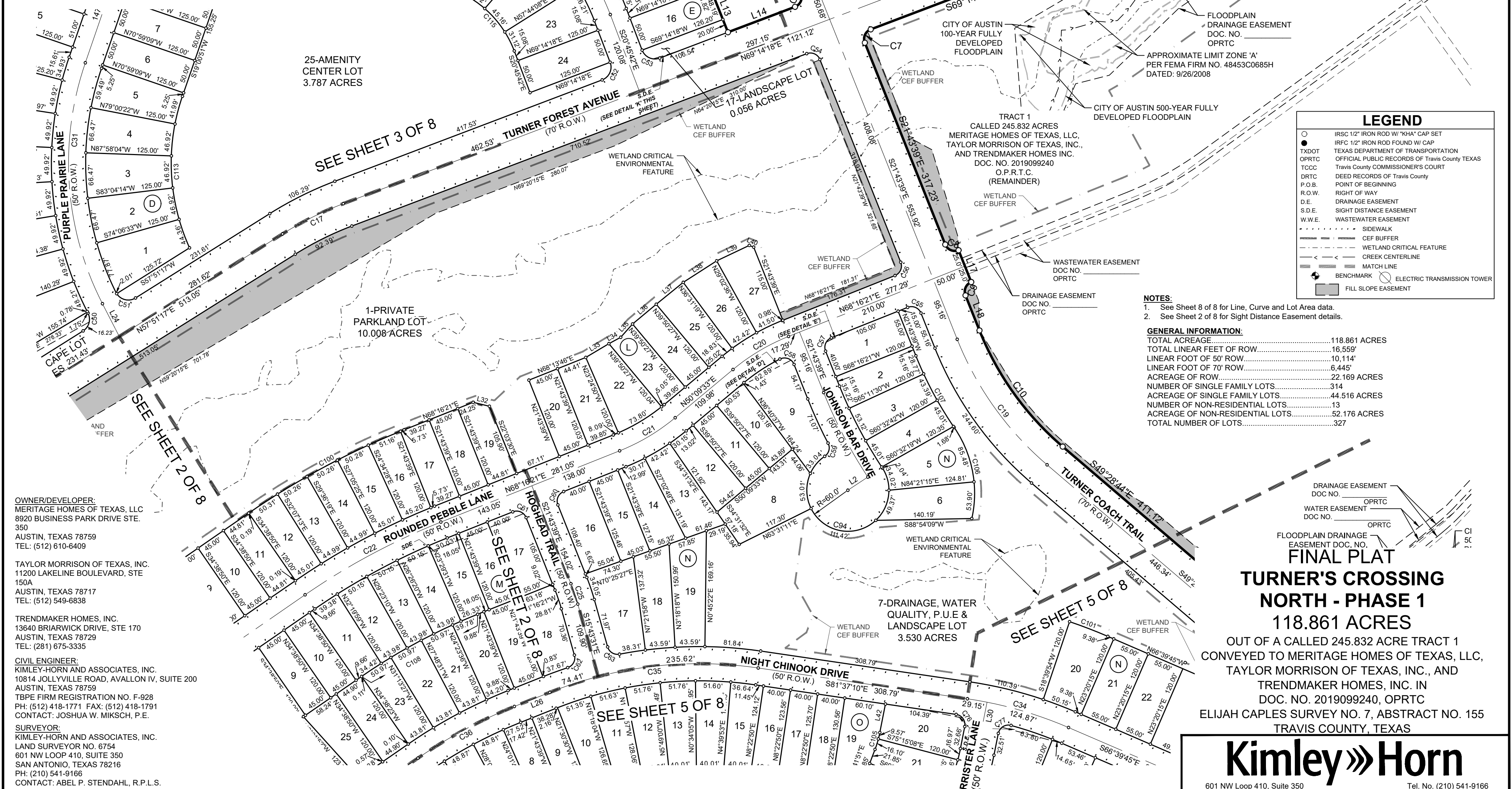
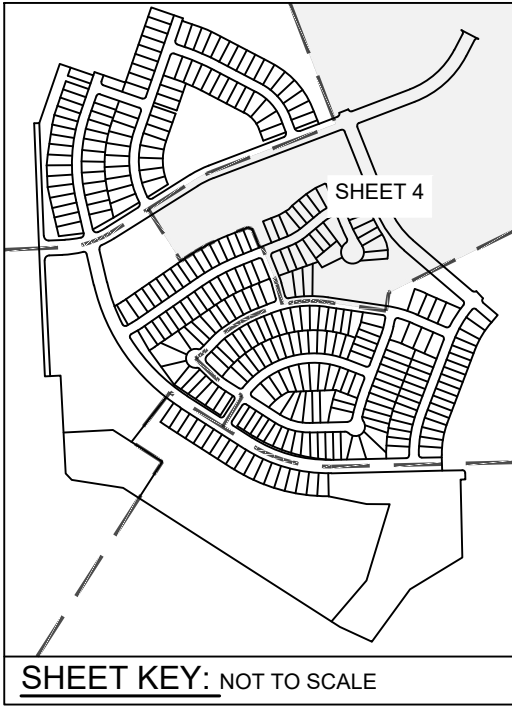
OUT OF A CALLED 245.832 ACRE TRACT 1
CONVEYED TO MERITAGE HOMES OF TEXAS, LLC,
TAYLOR MORRISON OF TEXAS, INC., AND
TRENDMAKER HOMES, INC. IN
DOC. NO. 2019099240, OPRTC
ELIJAH CAPLES SURVEY NO. 7, ABSTRACT NO. 155
TRAVIS COUNTY, TEXAS

Kimley»Horn

601 NW Loop 410, Suite 350
San Antonio, Texas 78216
FIRM # 10193973
Tel. No. (210) 541-9166
www.kimley-horn.com

Scale	Drawn by	Checked by	Date	Project No.	Sheet No.
1" = 100'	APS	JGM	11/12/19	067783111	2 of 8





OWNER/DEVELOPER:
MERITAGE HOMES OF TEXAS, LLC
8920 BUSINESS PARK DRIVE STE.
350
AUSTIN, TEXAS 78759
TEL: (512) 610-6409

TAYLOR MORRISON OF TEXAS, INC.
11200 LAKELINE BOULEVARD, STE
150A
AUSTIN, TEXAS 78717
TEL: (512) 549-6838

TRENDMAKER HOMES, INC.
13640 BRIARWICK DRIVE, STE 170
AUSTIN, TEXAS 78729
TEL: (281) 675-3335

CIVIL ENGINEER:
KIMLEY-HORN AND ASSOCIATES, INC.
10814 JOLLYVILLE ROAD, AVALLON IV, SUITE 200
AUSTIN, TEXAS 78759
PH: (512) 418-1771 FAX: (512) 418-1791
CONTACT: JOSHUA W. MIKSCH, P.E.

SURVEYOR:
KIMLEY-HORN AND ASSOCIATES, INC.
LAND SURVEYOR NO. 6754
601 NW LOOP 410, SUITE 350
SAN ANTONIO, TEXAS 78216
PH: (210) 541-9166
CONTACT: ABEL P. STENDAHL, R.P.L.S.

NOTES:

- See Sheet 8 of 8 for Line, Curve and Lot Area data.
- See Sheet 2 of 8 for Sight Distance Easement details.

GENERAL INFORMATION:

TOTAL ACREAGE.....	118.861 ACRES
TOTAL LINEAR FEET OF ROW.....	16,559'
LINEAR FOOT OF 50' ROW.....	10,114'
LINEAR FOOT OF 70' ROW.....	6,445'
ACREAGE OF ROW.....	22.169 ACRES
NUMBER OF SINGLE FAMILY LOTS.....	314
ACREAGE OF SINGLE FAMILY LOTS.....	44.516 ACRES
NUMBER OF NON-RESIDENTIAL LOTS.....	13
ACREAGE OF NON-RESIDENTIAL LOTS.....	52.176 ACRES
TOTAL NUMBER OF LOTS.....	327

FINAL PLAT
TURNER'S CROSSING
NORTH - PHASE 1
118.861 ACRES
OUT OF A CALLED 245.832 ACRE TRACT 1
CONVEYED TO MERITAGE HOMES OF TEXAS, LLC,
TAYLOR MORRISON OF TEXAS, INC., AND
TRENDMAKER HOMES, INC. IN
DOC. NO. 2019099240, OPRTC
ELIJAH CAPLES SURVEY NO. 7, ABSTRACT NO. 155
TRAVIS COUNTY, TEXAS

601 NW Loop 410, Suite 350
San Antonio, Texas 78216

FIRM # 10193973

Tel. (210) 541-9166
www.kimley-horn.com

Scale	Drawn by	Checked by	Date	Project No.	Sheet No.
1" = 100'	APS	JGM	11/12/19	067783111	4 OF 8

- NOTES:**
1. See Sheet 8 of 8 for Line, Curve and Lot Area data.
 2. See Sheet 2 of 8 for Sight Distance Easement details.

GENERAL INFORMATION:

TOTAL ACREAGE.....	118.861 ACRES
TOTAL LINEAR FEET OF ROW.....	16,559'
LINEAR FOOT OF 50' ROW.....	10,114'
LINEAR FOOT OF 70' ROW.....	6,445'
ACREAGE OF ROW.....	22.169 ACRES
NUMBER OF SINGLE FAMILY LOTS.....	314
ACREAGE OF SINGLE FAMILY LOTS.....	44.516 ACRES
NUMBER OF NON-RESIDENTIAL LOTS.....	13
ACREAGE OF NON-RESIDENTIAL LOTS.....	52.176 ACRES
TOTAL NUMBER OF LOTS.....	327

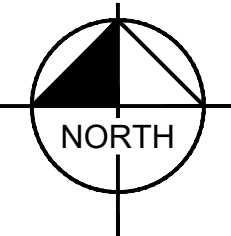
SHEET KEY: NOT TO SCALE

7-DRAINAGE, WATER QUALITY, P.U.E & LANDSCAPE LOT 3.530 ACRES
SEE SHEET 4 OF 8

DRAINAGE EASEMENT
DOC NO. _____ OPRTC
WATER EASEMENT
DOC NO. _____ OPRTC
FLOODPLAIN DRAINAGE
EASEMENT DOC. NO. _____ OPRTC
WASTEWATER EASEMENT
DOC NO. _____ OPRTC

CITY OF AUSTIN
500-YEAR FULLY
DEVELOPED
FLOODPLAIN

CITY OF AUSTIN
100-YEAR FULLY
DEVELOPED
FLOODPLAIN



GRAPHIC SCALE IN FEET

1" = 100' @ 24X18

TRACT 1
CALLED 245.832 ACRES
MERITAGE HOMES OF TEXAS, LLC,
TAYLOR MORRISON OF TEXAS, INC.,
AND TRENDMAKER HOMES INC.
DOC. NO. 2019099240
O.P.R.T.C.
(REMAINDER)

MIN. FFE
663.6' M.S.L.

SEE SHEET 6 OF 8

FINAL PLAT TURNER'S CROSSING NORTH - PHASE 1 118.861 ACRES

OUT OF A CALLED 245.832 ACRE TRACT 1
CONVEYED TO MERITAGE HOMES OF TEXAS, LLC,
TAYLOR MORRISON OF TEXAS, INC., AND
TRENDMAKER HOMES, INC. IN
DOC. NO. 2019099240, OPRTC
ELIJAH CAPLES SURVEY NO. 7, ABSTRACT NO. 155
TRAVIS COUNTY, TEXAS

Kimley»Horn

601 NW Loop 410, Suite 350
San Antonio, Texas 78216

FIRM # 10193973

Tel. No. (210) 541-9166
www.kimley-horn.com

Scale	Drawn by	Checked by	Date	Project No.	Sheet No.
1" = 100'	APS	JGM	11/12/19	067783111	5 OF 8

OWNER/DEVELOPER:
MERITAGE HOMES OF TEXAS, LLC
8920 BUSINESS PARK DRIVE STE. 350
AUSTIN, TEXAS 78759
TEL: (512) 610-6409

TAYLOR MORRISON OF TEXAS, INC.
11200 LAKELINE BOULEVARD, STE 150A
AUSTIN, TEXAS 78717
TEL: (512) 549-6838

TRENDMAKER HOMES, INC.
13640 BRIARWICK DRIVE, STE 170
AUSTIN, TEXAS 78729
TEL: (281) 675-3335

CIVIL ENGINEER:
KIMLEY-HORN AND ASSOCIATES, INC.
10814 JOLLYVILLE ROAD, AVALLON IV, SUITE 200
AUSTIN, TEXAS 78759
TBPE FIRM REGISTRATION NO. F-928
PH: (512) 418-1771 FAX: (512) 418-1791
CONTACT: JOSHUA W. MIKSCH, P.E.

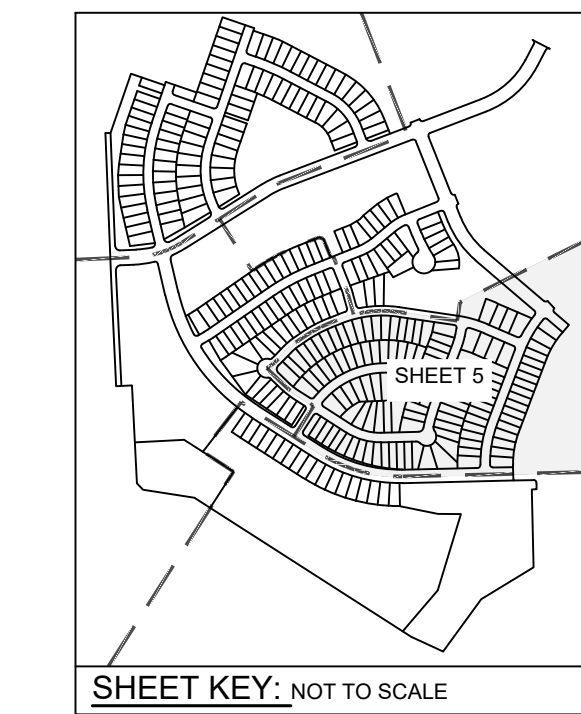
SURVEYOR:
KIMLEY-HORN AND ASSOCIATES, INC.
LAND SURVEYOR NO. 6754
601 NW LOOP 410, SUITE 350
SAN ANTONIO, TEXAS 78216
PH: (210) 541-9166
CONTACT: ABEL P. STENDAHL, R.P.L.S.

LEGEND	
○	IRSC 1/2" IRON ROD W/ "KHA" CAP SET
●	IRFC 1/2" IRON ROD FOUND W/ CAP
—	TEXAS DEPARTMENT OF TRANSPORTATION
—	OFFICIAL PUBLIC RECORDS OF TRAVIS COUNTY TEXAS
—	TRAVIS COUNTY COMMISSIONER'S COURT
—	DEED RECORDS OF TRAVIS COUNTY
—	P.O.B.
—	POINT OF BEGINNING
—	RIGHT OF WAY
—	DRAINAGE EASEMENT
—	S.D.E.
—	SIGHT DISTANCE EASEMENT
—	W.W.E.
—	WASTEWATER EASEMENT
—	SIDEWALK
—	CEF BUFFER
—	WETLAND CRITICAL FEATURE
—	CREEK CENTERLINE
—	MATCH LINE
+	BENCHMARK
⊗	ELECTRIC TRANSMISSION TOWER
■	FILL SLOPE EASEMENT

MIN. FFE
672.6' M.S.L.

MIN. FFE
672.6' M.S.L.

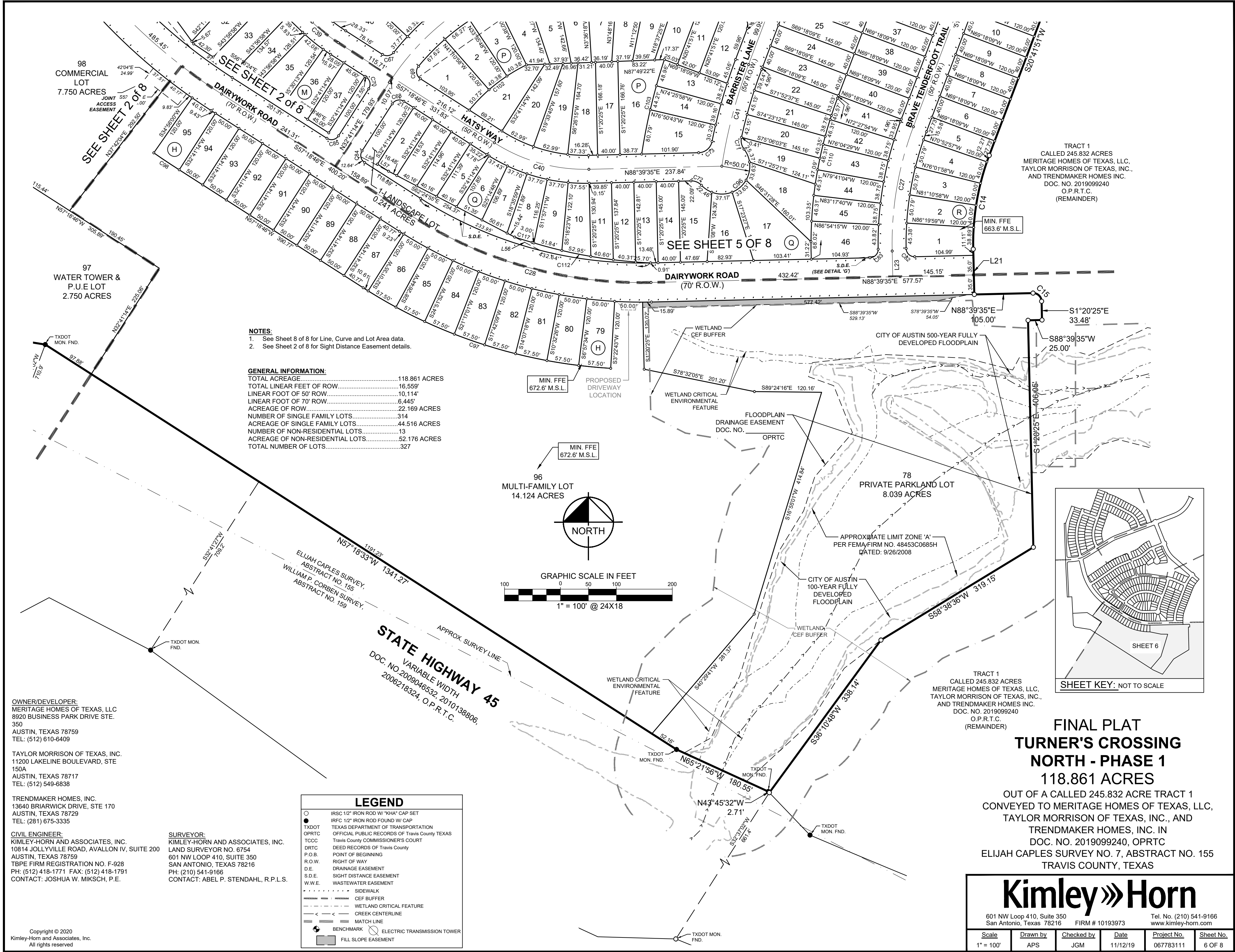
96
MULTI-FAMILY LOT
14.124 ACRES



98
COMMERCIAL LOT
7.750 ACRES
25'X75'
JOINT ACCESS
EASEMENT

97
WATER TOWER &
P.U.E LOT
2.750 ACRES

T
FND.



AREA TABLE		
LOT NO.	ACRES	SQ. FT.
BLOCK A LOT 1	0.170	7,393
BLOCK A LOT 2	0.150	6,552
BLOCK A LOT 3	0.150	6,552
BLOCK A LOT 4	0.156	6,799
BLOCK A LOT 5	0.160	6,985
BLOCK A LOT 6	0.160	6,974
BLOCK A LOT 7	0.158	6,900
BLOCK A LOT 8	0.156	6,781
BLOCK A LOT 9	0.151	6,586
BLOCK A LOT 10	0.133	5,791
BLOCK A LOT 11	0.134	5,837
BLOCK A LOT 12	0.136	5,938
BLOCK A LOT 13	0.136	5,940
BLOCK A LOT 14	0.130	5,658
BLOCK A LOT 15	0.129	5,625
BLOCK A LOT 16	0.129	5,625
BLOCK A LOT 17-LANDSCAPE	1.261	54,929
BLOCK A LOT 18	0.129	5,625
BLOCK B LOT 1	0.137	5,952
BLOCK B LOT 15	0.147	6,400
BLOCK B LOT 16	0.147	6,400
BLOCK B LOT 17	0.147	6,400
BLOCK B LOT 18	0.147	6,400
BLOCK B LOT 19	0.147	6,400
BLOCK B LOT 20	0.147	6,400
BLOCK B LOT 21	0.147	6,400
BLOCK B LOT 22	0.147	6,400
BLOCK B LOT 23	0.157	6,827
BLOCK C LOT 1	0.172	7,480
BLOCK C LOT 2	0.140	6,084
BLOCK C LOT 3	0.141	6,156
BLOCK C LOT 4	0.152	6,618
BLOCK C LOT 5	0.150	6,522
BLOCK C LOT 6	0.150	6,522
BLOCK C LOT 7	0.150	6,522
BLOCK C LOT 8	0.155	6,745
BLOCK C LOT 9	0.131	5,721
BLOCK C LOT 10	0.131	5,721
BLOCK C LOT 11	0.127	5,519
BLOCK C LOT 12	0.124	5,400

AREA TABLE		
LOT NO.	ACRES	SQ. FT.
BLOCK C LOT 13	0.137	5,952
BLOCK C LOT 14	0.159	6,915
BLOCK C LOT 15	0.146	6,375
BLOCK C LOT 16	0.158	6,896
BLOCK C LOT 17	0.163	7,095
BLOCK C LOT 18	0.164	7,161
BLOCK C LOT 19	0.167	7,261
BLOCK C LOT 20	0.170	7,396
BLOCK C LOT 21	0.174	7,563
BLOCK C LOT 22	0.179	7,812
BLOCK C LOT 23	0.207	9,004
BLOCK C LOT 24-LANDSCAPE	0.148	6,450
BLOCK D LOT 1	0.178	7,766
BLOCK D LOT 2	0.163	7,087
BLOCK D LOT 3	0.163	7,087
BLOCK D LOT 4	0.163	7,087
BLOCK D LOT 5	0.161	7,000
BLOCK D LOT 6	0.143	6,250
BLOCK D LOT 7	0.143	6,250
BLOCK D LOT 8	0.143	6,250
BLOCK D LOT 9	0.143	6,250
BLOCK D LOT 10	0.143	6,250
BLOCK D LOT 11	0.145	6,316
BLOCK D LOT 12	0.176	7,677
BLOCK D LOT 13	0.147	6,410
BLOCK D LOT 14	0.152	6,623
BLOCK D LOT 15	0.152	6,623
BLOCK D LOT 16	0.145	6,329
BLOCK D LOT 17	0.143	6,250
BLOCK D LOT 18	0.143	6,250
BLOCK D LOT 19	0.143	6,250
BLOCK D LOT 20	0.143	6,250
BLOCK D LOT 21	0.172	7,472
BLOCK D LOT 22	0.182	7,921
BLOCK D LOT 23	0.169	7,343
BLOCK D LOT 24	0.143	6,250
BLOCK D LOT 25-AMENITY CENTER	3.787	164,946
BLOCK E LOT 1	0.157	6,827
BLOCK E LOT 2	0.148	6,436
BLOCK E LOT 3	0.149	6,472

AREA TABLE		
LOT NO.	ACRES	SQ. FT.
BLOCK E LOT 4	0.146	6,348
BLOCK E LOT 5	0.143	6,230
BLOCK E LOT 6	0.139	6,039
BLOCK E LOT 7	0.139	6,041
BLOCK E LOT 8	0.139	6,042
BLOCK E LOT 9	0.148	6,452
BLOCK E LOT 10	0.158	6,867
BLOCK E LOT 11	0.158	6,901
BLOCK E LOT 12	0.159	6,947
BLOCK E LOT 13	0.161	7,009
BLOCK E LOT 14	0.162	7,063
BLOCK E LOT 15	0.155	6,762
BLOCK E LOT 16	0.144	6,289
BLOCK E LOT 17-LANDSCAPE	0.056	2,442
BLOCK H LOT 78-PARKLAND	8.039	350,179
BLOCK H LOT 79	0.148	6,450
BLOCK H LOT 80	0.148	6,450
BLOCK H LOT 81	0.148	6,450
BLOCK H LOT 82	0.148	6,450
BLOCK H LOT 83	0.148	6,450
BLOCK H LOT 84	0.148	6,450
BLOCK H LOT 85	0.148	6,450
BLOCK H LOT 86	0.148	6,450
BLOCK H LOT 87	0.140	6,083
BLOCK H LOT 88	0.138	6,000
BLOCK H LOT 89	0.138	6,000
BLOCK H LOT 90	0.138	6,000
BLOCK H LOT 91	0.138	6,000
BLOCK H LOT 92	0.138	6,000
BLOCK H LOT 93	0.138	6,000
BLOCK H LOT 94	0.138	6,000
BLOCK H LOT 95	0.144	6,282
BLOCK H LOT 96-MULTIFAMILY	14.124	615,227
BLOCK H LOT 97-WATER TOWER	2.750	119,769
BLOCK H LOT 98-COMMERCIAL	7.750	337,594
BLOCK L LOT 1-PARKLAND	10.008	435,948
BLOCK L LOT 2-LANDSCAPE	0.059	2,558
BLOCK L LOT 3	0.168	7,313
BLOCK L LOT 4	0.154	6,728
BLOCK L LOT 5	0.124	5,400

AREA TABLE		
LOT NO.	ACRES	SQ. FT.
BLOCK L LOT 6	0.124	5,400
BLOCK L LOT 7	0.124	5,400
BLOCK L LOT 8	0.124	5,400
BLOCK L LOT 9	0.124	5,400
BLOCK L LOT 10	0.124	5,400
BLOCK L LOT 11	0.124	5,400
BLOCK L LOT 12	0.131	5,719
BLOCK L LOT 13	0.131	5,715
BLOCK L LOT 14	0.131	5,715
BLOCK L LOT 15	0.131	5,717
BLOCK L LOT 16	0.133	5,782
BLOCK L LOT 17	0.124	5,400
BLOCK L LOT 18	0.124	5,400
BLOCK L LOT 19	0.119	5,196
BLOCK L LOT 20	0.124	5,401
BLOCK L LOT 21	0.127	5,543
BLOCK L LOT 22	0.157	6,824
BLOCK L LOT 23	0.122	5,315
BLOCK L LOT 24	0.124	5,400
BLOCK L LOT 25	0.130	5,686
BLOCK L LOT 26	0.138	5,994
BLOCK L LOT 27	0.137	5,968
BLOCK M LOT 1-LANDSCAPE	0.423	18,430
BLOCK M LOT 2	0.133	5,780
BLOCK M LOT 3	0.124	5,400
BLOCK M LOT 4	0.124	5,400
BLOCK M LOT 5	0.124	5,400
BLOCK M LOT 6	0.124	5,400
BLOCK M LOT 7	0.124	5,400
BLOCK M LOT 8	0.124	5,400
BLOCK M LOT 9	0.124	5,400
BLOCK M LOT 10	0.124	5,400
BLOCK M LOT 11	0.128	5,594
BLOCK M LOT 12	0.130	5,647
BLOCK M LOT 13	0.130	5,647
BLOCK M LOT 14	0.130	5,647
BLOCK M LOT 15	0.127	5,548
BLOCK M LOT 16	0.124	5,400
BLOCK M LOT 17	0.150	6,552
BLOCK M LOT 18	0.163	7,081

AREA TABLE		
LOT NO.	ACRES	SQ. FT.
BLOCK M LOT 19	0.124	5,400
BLOCK M LOT 20	0.129	5,624
BLOCK M LOT 21	0.131	5,687
BLOCK M LOT 22	0.131	5,687
BLOCK M LOT 23	0.131	5,687
BLOCK M LOT 24	0.124	5,401
BLOCK M LOT 25	0.140	6,094
BLOCK M LOT 26	0.142	6,177
BLOCK M LOT 27	0.142	6,186
BLOCK M LOT 28	0.172	7,510
BLOCK M LOT 29	0.218	9,506
BLOCK M LOT 30	0.303	13,193
BLOCK M LOT 31	0.196	8,542
BLOCK M LOT 32	0.152	6,619
BLOCK M LOT 33	0.143	6,238
BLOCK M LOT 34	0.135	5,873
BLOCK M LOT 35	0.144	6,281
BLOCK M LOT 36	0.129	5,640
BLOCK M LOT 37	0.124	5,400
BLOCK N LOT 1	0.150	6,552
BLOCK N LOT 2	0.130	5,659
BLOCK N LOT 3	0.133	5,791
BLOCK N LOT 4	0.124	5,401
BLOCK N LOT 5	0.173	7,549
BLOCK N LOT 6	0.144	6,280
BLOCK N LOT 7-LANDSCAPE	3.530	153,781
BLOCK N LOT 8	0.225	9,800
BLOCK N LOT 9	0.219	9,555
BLOCK N LOT 10	0.130	5,665
BLOCK N LOT 11	0.124	5,400
BLOCK N LOT 12	0.135	5,874
BLOCK N LOT 13	0.161	7,006
BLOCK N LOT 14	0.145	6,324
BLOCK N LOT 15	0.130	5,684
BLOCK N LOT 16	0.156	6,795
BLOCK N LOT 17	0.185	8,054
BLOCK N LOT 18	0.161	7,002
BLOCK N LOT 19	0.181	7,865
BLOCK N LOT 20	0.177	7,731
BLOCK N LOT 21	0.152	6,600

CURVE TABLE				
NO.	DELTA	RADIUS	LENGTH	CHORD BEARING
C1	90°57'57"	15.00'	23.81'	N23°45'19"E
C2	89°02'03"	15.00'	23.31'	S66°14'41"E
C3	41°36'54"	435.00'	315.95'	N48°25'51"E
C4	90°02'16"	15.00'	23.57'	N17°23'44"W
C5	89°57'42"	15.00'	23.55'	S72°36'15"W
C6	41°36'54"	505.00'	366.79'	S48°25'51"W
C7	90°57'57"	15.00'	23.81'	S23°45'19"W
C8	90°00'00"	15.00'	23.56'	S66°43'39"E
C9	90°00'00"	15.00'	23.56'	S23°16'21"W
C10	27°45'05"	435.00'	210.69'	S35°36'12"E
C11	82°46'16"	15.00'	21.67'	N89°08'19"E
C12	95°02'23"	15.00'	24.88'	S02°02'00"E
C13	21°12'01"	445.00'	164.66'	S31°17'52"W
C14	22°02'17"	445.00'	171.16'	S09°40'43"W
C15	90°00'00"	15.00'	23.56'	S46°20'25"E
C16	29°54'10"	500.00'	260.95'	N72°48'22"E
C17	11°23'01"	500.00'	99.34'	S63°32'47"W
C18	41°36'54"	470.00'	341.37'	N48°25'51"E
C19	27°45'05"	470.00'	227.65'	S35°36'12"E
C20	18°06'48"	300.00'	94.84'	S59°12'57"E
C21	18°06'48"	300.00'	94.84'	S59°12'57"E
C22	12°55'11"	1000.00'	225.49'	S61°48'46"W
C23	5°08'56"	300.00'	26.96'	N57°55'38"E
C24	11°45'15"	680.00'	139.50'	S27°36'16"E
C25	6°00'07"	300.00'	31.43'	N18°43'35"W
C26	27°39'19"	590.00'	284.78'	S34°31'31"W
C27	22°02'17"	590.00'	228.93'	S09°40'43"W
C28	34°01'39"	765.00'	454.33'	S74°19'35"E
C29	44°12'19"	1000.00'	771.53'	S35°12'36"E
C30	32°07'18"	800.00'	448.50'	S02°57'12"W
C31	46°09'34"	450.00'	362.54'	S04°03'56"E
C32	8°36'06"	1200.00'	180.15'	N66°41'06"W
C33	41°37'20"	305.00'	221.57'	N41°34'22"W
C34	14°57'25"	590.00'	154.02'	N74°06'28"W
C35	30°06'29"	590.00'	310.03'	S83°19'35"W
C36	12°55'11"	710.00'	160.10'	S61°48'46"W
C37	11°32'13"	300.00'	60.41'	S49°35'03"W
C38	11°32'13"	300.00'	60.41'	N49°35'03"E
C39	11°15'44"	300.00'	58.97'	S51°40'54"E
C40	34°01'39"	300.00'	178.17'	S74°19'35"E

CURVE TABLE					
NO.	DELTA	RADIUS	LENGTH	CHORD BEARING	CHORD
C41	11°55'34"	905.00'	188.38'	S14°44'04"W	188.04'
C42	9°29'11"	300.00'	49.67'	N15°57'16"E	49.61'
C43	78°00'37"	450.00'	612.69'	S71°41'33"W	566.45'
C44	89°59'57"	25.00'	39.27'	S42°45'32"W	35.36'
C45	90°00'24"	25.00'	39.27'	S47°14'28"E	35.36'
C46	90°51'43"	15.00'	23.79'	N58°32'18"W	21.37'
C47	90°31'03"	20.00'	31.60'	N32°09'05"E	28.41'
C48	102°30'44"	20.00'	35.78'	S64°21'48"E	31.20'
C49	78°56'47"	20.00'	27.56'	S26°21'57"W	25.43'
C50	85°00'00"	20.00'	29.67'	N15°21'17"E	27.02'
C51	90°00'00"	20.00'	31.42'	S77°08'43"E	28.28'
C52	90°00'00"	20.00'	31.42'	N24°14'18"E	28.28'
C53	90°00'00"	20.00'	31.42'	S65°45'42"E	28.28'
C54	89°02'03"	15.00'	23.31'	N66°14'41"W	21.03'
C55	90°00'00"	15.00'	23.56'	N66°43'36"W	21.21'
C56	90°00'00"	15.00'	23.56'	N23°16'19"E	21.21'
C57	90°00'00"	15.00'	23.56'	S23°16'21"W	21.21'
C58	95°00'38"	15.00'	24.87'	N69°13'58"W	22.12'
C59	83°11'10"	15.00'	21.78'	N14°05'24"E	19.92'
C60	85°00'00"	15.00'	23.56'	S23°16'21"W	21.21'
C61	90°00'00"	15.00'	23.56'	N66°43'39"W	21.21'
C62	87°30'28"	15.00'	22.91'	N28°01'43"E	20.75'
C63	85°12'37"	15.00'	22.31'	S58°19'50"E	20.31'
C64	94°41'25"	25.00'	41.32'	S01°17'41"W	36.77'
C65	56°41'17"	15.00'	14.84'	N77°02'36"E	14.24'
C66	52°01'12"	15.00'	13.62'	N72°03'38"W	13.16'
C67	84°08'08"	15.00'	22.03'	N80°37'10"E	20.10'
C68	90°00'00"	15.00'	23.56'	S77°41'14"W	21.21'
C69	97°00'50"	15.00'	25.40'	S08°48'21"E	22.47'
C70	90°00'00"	15.00'	23.56'	N12°18'46"W	21.21'
C71	50°02'11"	25.00'	21.83'	S12°36'18"E	21.15'
C72	48°11'22"	25.00'	21.03'	N67°14'43"W	20.45'
C73	77°21'54"	25.00'	33.76'	N49°58'37"E	31.21'
C74	90°00'00"	15.00'	23.56'	N24°18'09"W	21.21'
C75	90°00'00"	15.00'	23.56'	N65°41'51"E	21.21'
C76	92°49'50"	15.00'	24.30'	N35°12'15"W	21.73'
C77	94°10'14"	15.00'	24.65'	S58°17'47"W	21.97'
C78	86°21'35"	15.00'	22.61'	N70°09'27"E	20.53'
C79	87°21'37"	15.00'	22.87'	N22°56'57"W	20.72'
C80	90°26'55"	15.00'	23.88'	S85°17'48"W	21.21'

Turner's Crossing Preliminary Plan

Location Map

