

SLIDE 1 PROPOSED TRAIL AT 4530 EAST BEN WHITE NPA-2017-0021.01

SLIDE 2 The Country Club Creek Trail is a major goal of the East Riverside/Oltorf Combined (EROC) Neighborhood Plan. The CCC Trail will eventually connect the neighborhoods of south east Austin to Mabel Davis Park, the Country Club Creek Greenbelt, and to Roy Guerrero Park. The EROC Contact Team has been working for 15 years to build, maintain, and extend the CCC Trail. The remaining unfinished section of the CCC Trail, between Oltorf and Riverside, is currently in the Design Phase.

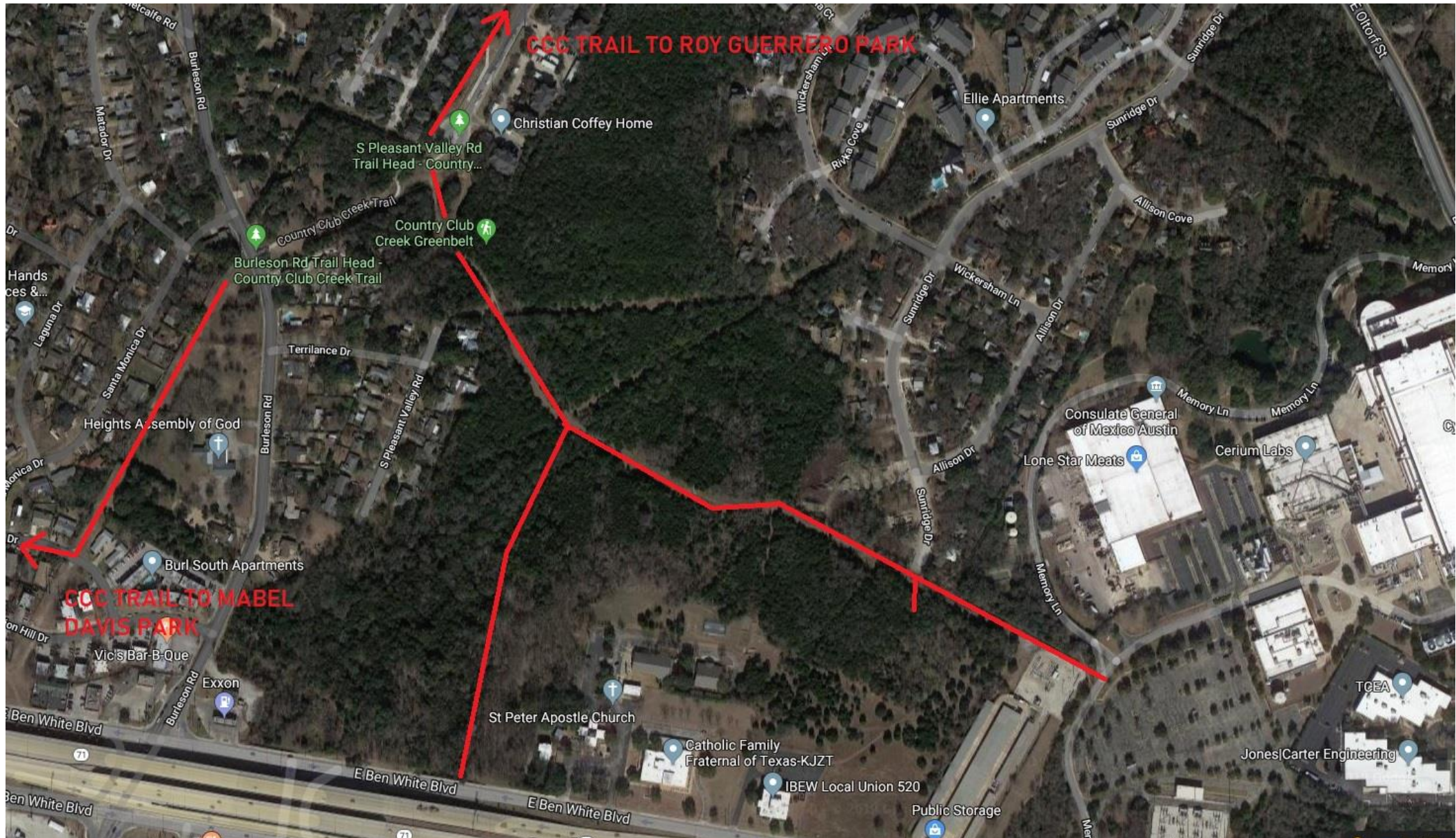
SLIDE 3 The property at 4530 East Ben White is an opportunity to extend the connections to the CCC Trail to connect Ben White to the south, and neighborhoods and businesses to the east.

SLIDE 4 The proposed Recreational Use Easement will create a north-south trail that will connect Ben White to the CCC Trail. This property is also an opportunity connect the CCC Trail to the residential neighborhood, the Cypress Campus, and the proposed Mixed Use development at 5016 ½ East Ben White with an east-west trail to Sunridge Drive.

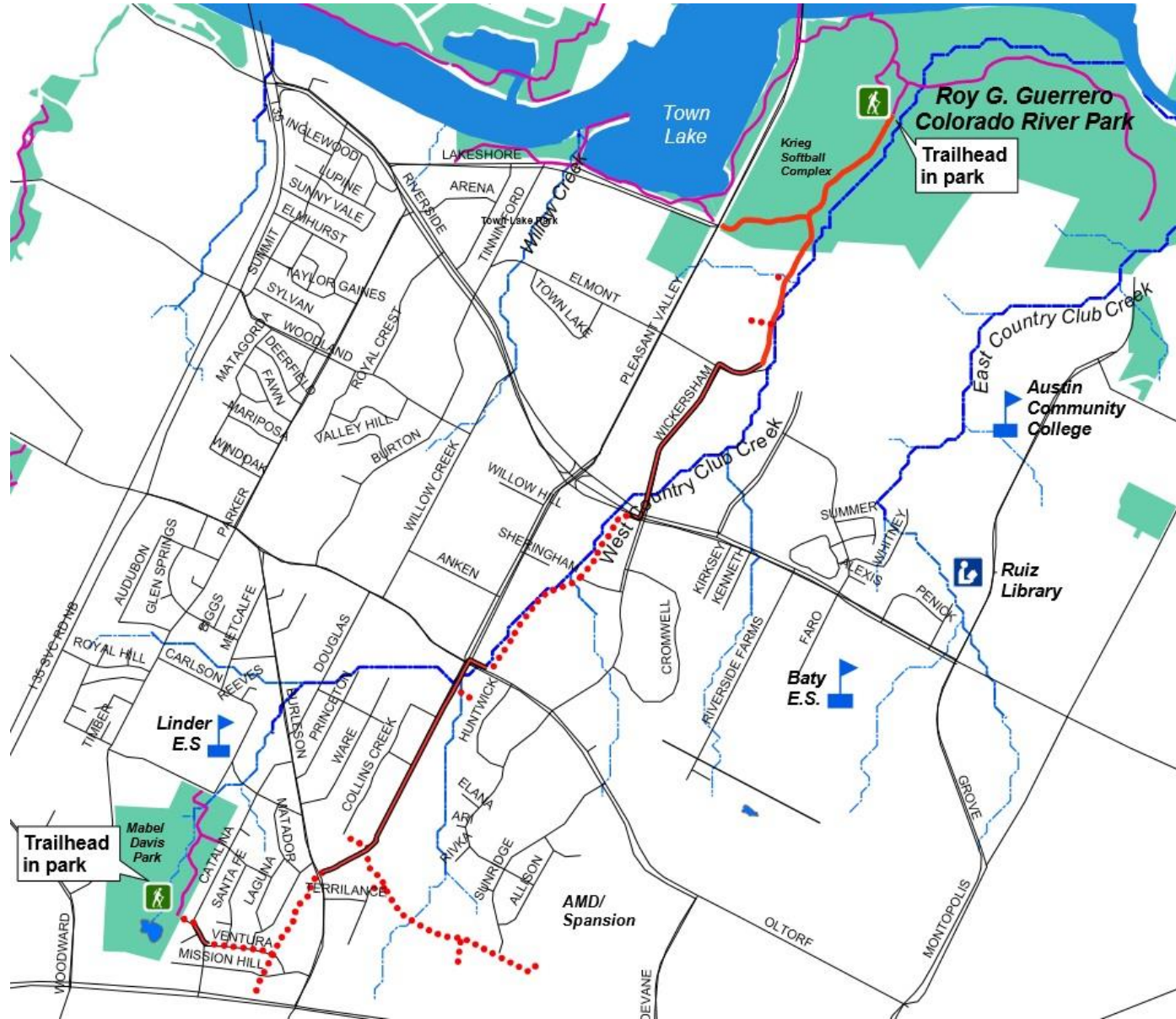
SLIDE 5 This slide shows the proposed Recreational Use Easement on the property at 4530 East Ben White.

SLIDE 6 The EROC Contact Team has voted to support NPA-2017-0021.01 with the understanding that the City of Austin will work with the property owner to create the Recreational Use Easement that will increase connectivity in this area.

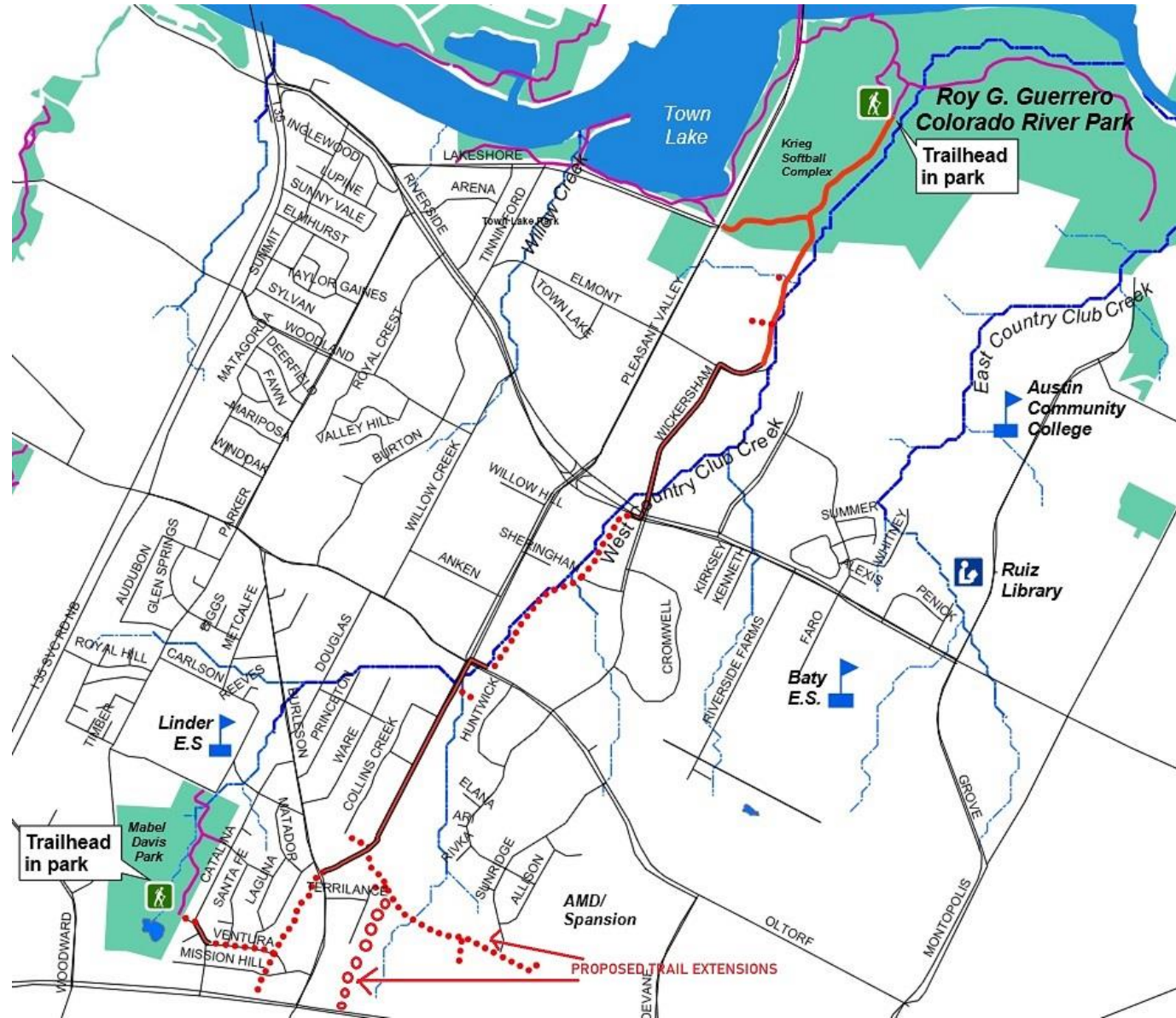
PROPOSED TRAIL AT 4530 EAST BEN WHITE



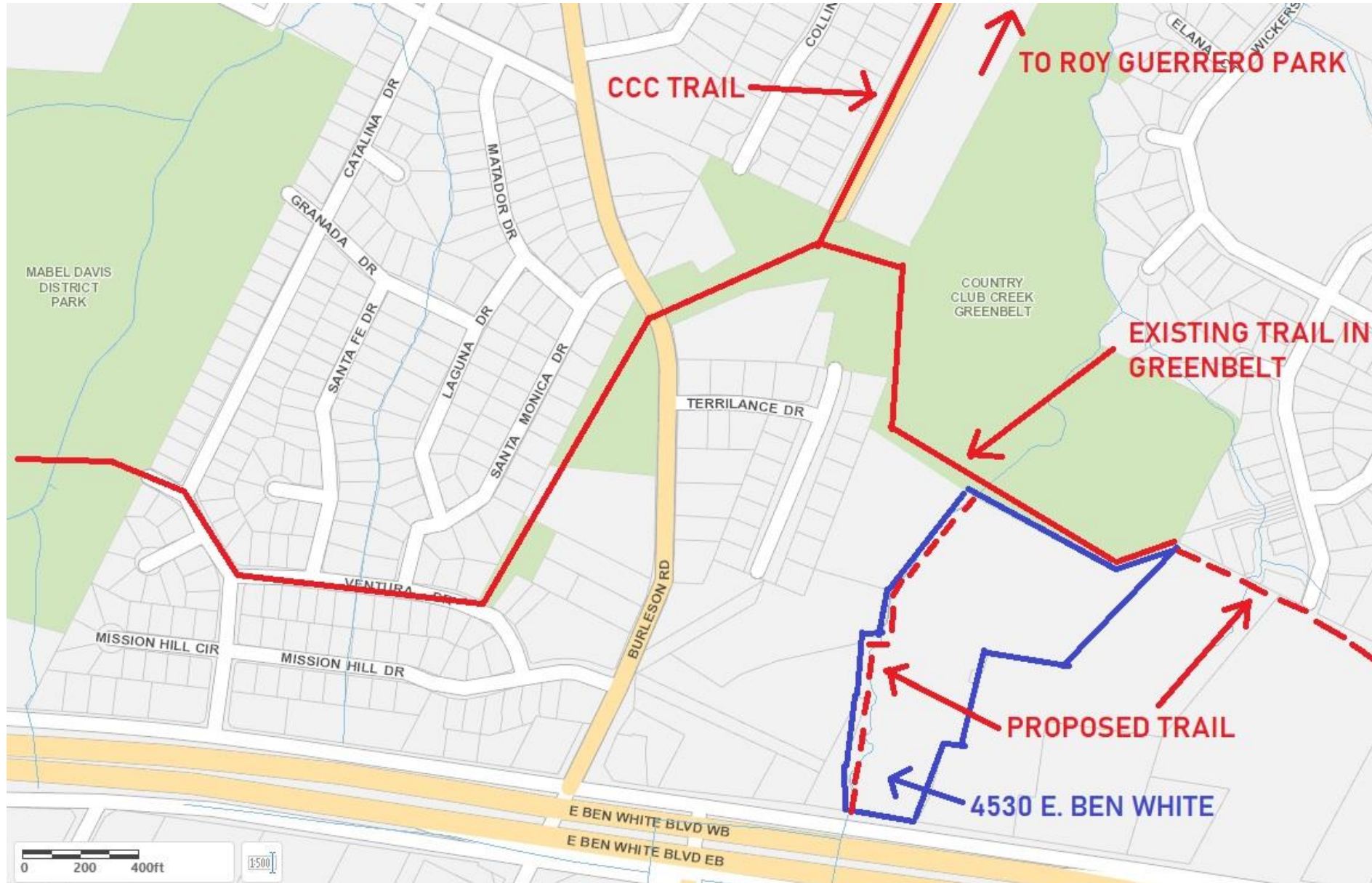
CURRENT COUNTRY CLUB CREEK TRAIL



EXTENSION OF COUNTRY CLUB CREEK TRAIL



COUNTRY CLUB CREEK GREENBELT TRAILS



EROC CONTACT TEAM REQUEST

- THE EROC CONTACT TEAM REQUESTS THAT THE CITY REAL ESTATE DEPARTMENT WORK WITH THE OWNER OF 4530 EAST BEN WHITE TO CREATE A RECREATIONAL USE EASEMENT THAT WILL ALLOW A TRAIL TO CONNECT BEN WHITE AND SUNRIDGE DRIVE TO THE COUNTRY CLUB CREEK GREENBELT AND THE COUNTRY CLUB CREEK TRAIL.