

Rosewood AIPP - Like Water

Artists J Muzacz & Polis - Daniel Goodwin & Bruce Wilcoxon

(1) A description of the results of the **Community Engagement Plan**, and how they are incorporated into the Final Design.

Artists hosted multiple community input/feedback sessions about the upcoming Austin Art in Public Places sponsored art project at the new bath house at Rosewood Recreation Center and at the African American Cultural Heritage Facility (August-November 2019).

We have built a relationship with Ms. Maggie Risher at the Rosewood ceramic studio, as well as with Claudia, Margarita, Mark, Jennifer and others on staff at the center. Totally Cool Totally Art has also agreed to allow us an audience and to team up with their teens in the program (pre-Covid plans), a great creative collaborative opportunity. We will engage TCTA through mosaic art workshops and demos when possible.

As part of AIPP's presence at the Carver Museum Spooktacular event, J Muzacz hosted a three-hour mosaic workshop, offering free art supplies and instruction to dozens of youth and families to make their own custom mosaic artworks. Polis also brought an interactive light installation to show a small sample of the awesome lighting and programming effects they add to the project.

Artists also participated and tabled at the Little EAST art fair at Blackshear Elementary, offering introductory workshops and an interactive light installation to introduce the community to our artistic practices and capabilities. We also had on display our initial design ideas and engaged in discussions about the concept and content, all the while promoting AIPP and its history, breadth and mission.

120+ mini mosaics made at the Carver Museum Spooktacular event and Blackshear Elementary Little EAST school fair. Engagement sessions at Rosewood Rec Center and meetings with staff and community members. Workshops held at Something Cool Studios including free and low-cost options to remain inclusive to all community members regardless of budget.

Part studio, part workshop, part community. All creative. Something Cool Studios is an artist run collective in the heart of Austin's east-side. We provide space for artists to create their work, host workshops and sell their art. Housed in a 100 year old house, we aim to keep a sense of community in this rapidly changing neighborhood by creating programs that are inclusive to all residents regardless of their budget.

Finally, our photo shoots in January were a form of community engagement, bringing local community members with lived experience at Rosewood and the pool into the design by way of digital photographic reference as we go on to fabricate their likenesses in the colorful glass mosaic elements of the project.

(2) **Renderings** for all elements of the Artwork that show their form, color, texture, size and placement in relation to the Site.

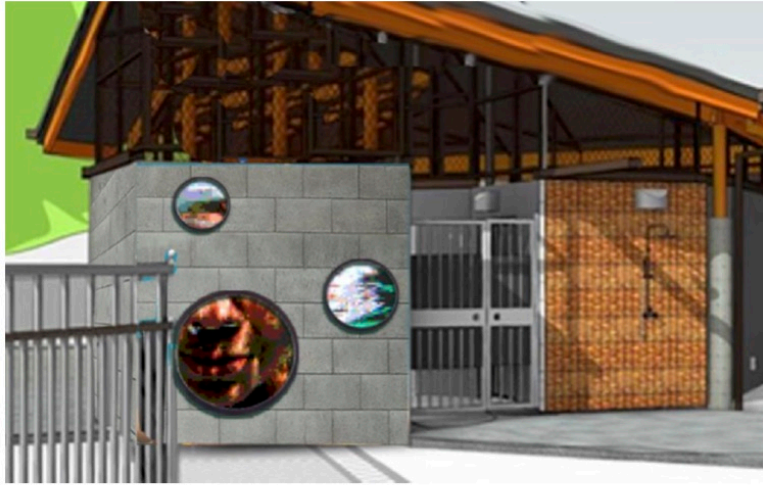
WIRE ME
STL. FR

OPEN

PREFIN.
STL.
FENCE

GALV. T.S. GATE

Arlene Lois Youngblood:



Ruby & Magnolia Harper-Madison:



Mickaul & Gabreauna Nash:



(3) **Working drawings** detailing all elements of the Artwork and the means of installing the Artwork at the Site, together with the Design Sketches and any other graphic material requested by the City in order to allow the City to carry out a structural design review of the Artwork and to certify compliance of the Artwork with applicable statutes and ordinances. The drawings submitted by the Artist must bear an engineer's or architect's seal, unless the City grants the Artist permission to submit sealed drawings after the Final Design Review is complete. The engineer or architect of record must provide to the City proof of the required Professional Liability Insurance required for this Artwork as set out in Exhibit E.

Mosaic:

Material (¾ in. glass tile) & Mosaic Fabrication Process Samples/Detail:



Framing:

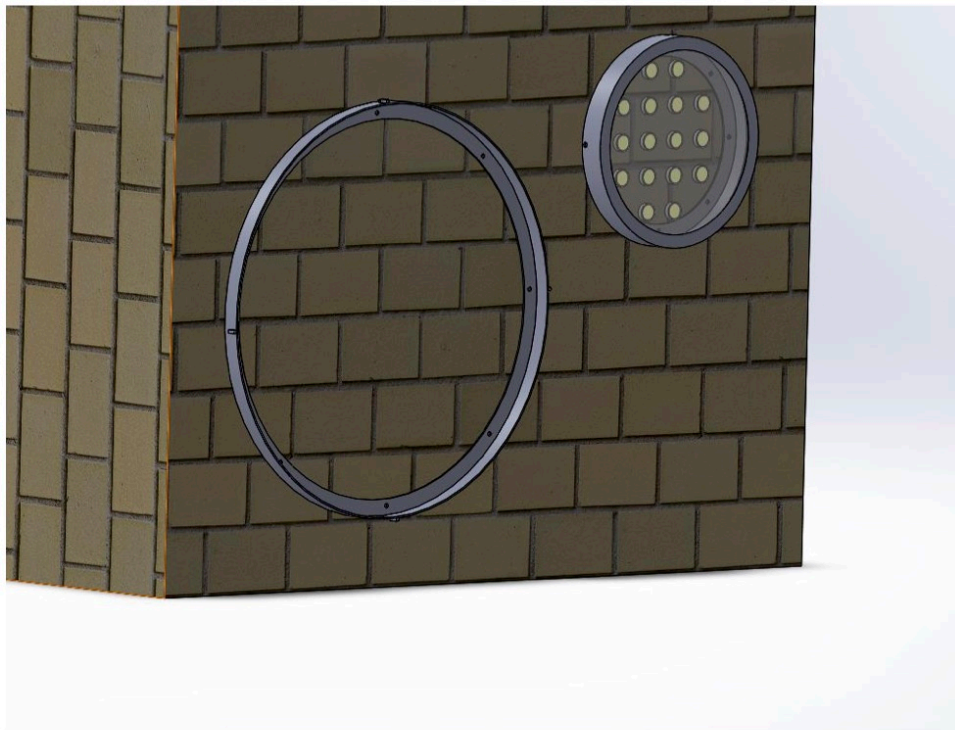
- Sculpt Nouveau, black magic patina; steel paint; [link to spec sheet](#)
- Flood, penetrol; rust inhibitor ; [link to spec sheet](#)
- Sculpt Nouveau, Clear Guard; sealer; [link to spec sheet](#)

The steel frame will be painted with black magic, followed by a coat of penetrol to stop the progression of rust. After this, two coats of clear guard will be applied as a sealer, which can be reapplied when needed.

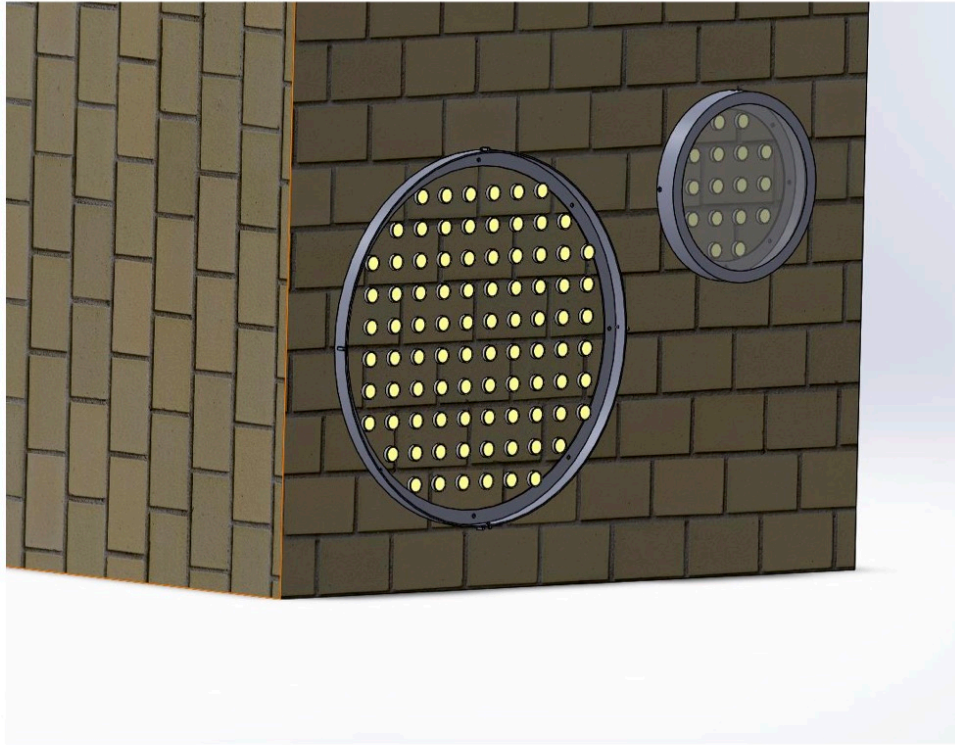
Each frame will consist of plasma cut rings and rolled flat stock rings. These will be welded together to form the component pieces. Welds will be ground smooth.

Installation:

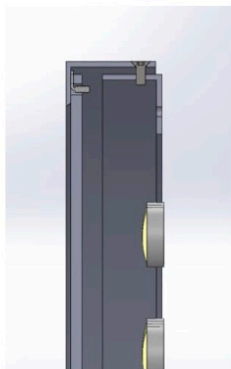
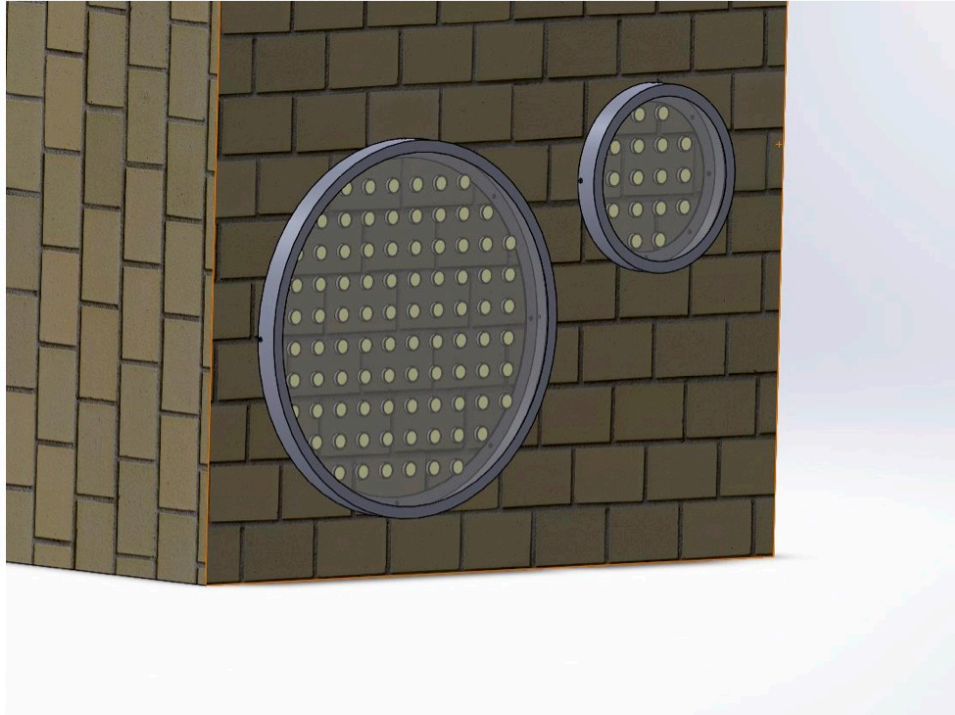
Artwork will be affixed to several walls of the bathhouse. Installation method is similar for all size frames.



First, the "back plate" is fastened directly to the CMU using 8 concrete anchor bolts.



Next, the lights are attached to the wall. The lights are pre attached to a panel, which is then anchored to the cmu. This is when the hole from the inside to the outside is drilled, and wiring is run / tested / attached.



Finally, the “front plate” slides onto the back plate and is bolted in place using tamper resistant bolts. The frame is now installed.

This process is repeated for all “portholes”.

If rust is beginning to appear on the frames, another coat of Sculpt Nouveau “Clear Guard” can be applied (comes in a spray can). Ideally this application happens every other year, but isn’t entirely necessary as slight rust isn’t a structural issue and can look good.

Prototype:



(4) A comprehensive **written narrative** describing the Final Design, including information about concept and imagery, types and quantities of all materials to be incorporated into the Artwork, and how the Final Design meets the goals outlined in Exhibit B.

Our design “Like Water” for the new Rosewood Neighborhood bathhouse facility reflects the nature and character of the park and pool by depicting actual residents and members of the community young and old swimming and playing underwater.

Inviting community members to take part in a scheduled photo shoot specifically to capture them enjoying underwater recreation, we will use these photos as reference to make the backlit mosaic “portholes” that will wrap around the entire structure, revering everyday local leaders as the icons represented in the artwork.

We embrace the poolside location by integrating our artwork features with the existing architecture in a complementary way. By installing lustrous glass mosaic murals to the otherwise gray façade, we reflect the colors of the pool to brightening and inspiring effect, changing the visual/experiential landscape at both day and night.

Maximizing the available budget, we will create an expansive series of “portholes” that give a dynamic glimpse of a much larger composition so that the viewer’s imagination is engaged in completing the scene.

The "portholes" (portals) are poignant in that they reference ships, water, and are of course illuminated to both activate the artwork and space, which also in effect makes the surrounding area safer at night.

Glass mosaic in a special translucent epoxy grout and mounted in steel, the artworks will be vandal resistant and very easily maintained over time. The lighting features will be robust, industrial (not hobby) grade, easily accessible and serviceable whenever necessary. The highest quality professional materials will be used in fabrication and installation.

- Reflect the colors of the pool
- Integrate with the existing architecture
- Change the visual/experiential landscape at both day and night
- Maximize available budget (wraparound design)
- Details of a much larger composition for the viewer's imagination to complete
- Portholes reference ships/water
- Illuminated at night with dynamic wave-like shimmering animations
- Glass mosaic set in translucent epoxy grout for maximum transparency
- Artworks are robust, vandal resistant and easily accessible for maintenance
- Highest-quality industrial grade materials used in fabrication and installation

Relevant Notes from Model Bios:

Arlene Lois Youngblood: She grew up in East Austin at 1306 Cotton Street. Arlene and her brother Alvin, Jr. learned how to swim at Rosewood Pool under the instruction of the late swim teacher Mr. Vernon Coleman. Her mother Mrs. Christine Gallimore Youngblood made sure to walk with them early morning down Pennsylvania Avenue to the pool for their lessons. She has been swimming ever since.

Gabreauna Nash: An Austin native, Gabreauna Nash (with brother Miekaul) is a pop singer/songwriter heavily influenced by Michael Jackson and Juice World. Her Music with a Message platform leads her to write songs that deal with teen depression, love and heartbreak. Her dream is to share her message with the world. She believes you can do or be anything you desire if you let the music express you. She has performed at many cultural festivals in the Austin area. Most notably, she has sung the National Anthem for University of Texas sporting events and numerous charitable causes. She records with mentor Ray Price at the Notes 4 Notes teen recording studio in Rosewood.

Ray & Mika Price: Ray Price has been the Program Director of the non-profit organization Notes for Notes since April 2017. Throughout that time, he's personally worked with over 600

youth ranging from ages 6 - 19. This work includes teaching music lessons, producing original audio recordings, producing music videos, hosting musical workshops, life coaching/mentorship, and artist development. He's collaborated with other organizations located in East Austin and elsewhere such as TCTA (Totally Cool Totally Art), Capitol View Arts, Public-City, Austin Parks and Recreation, Elementary and Middle schools in surrounding areas of East Austin to name a few.

Mika Price was born and raised in Austin, TX. She found her passion for singing, dancing and acting at a very young age. Mika started teaching dance as young as 13 at Alisa's Dance Academy. Continuing her education and teaching classes from Lakeway to round rock and ending up in east Austin, she quickly realized the impact she hoped to make in this community. She taught dance at multiple schools in East Austin for hearing-impaired and children with autism. She's also fostered youth within the East Austin community and has served as a mentor and life coach to several others.

Ray and his wife Mika, have also fostered youth from the neighborhood. He truly feels that landing this opportunity to work so closely with youth and various organizations in the community has been his most meaningful and joyous experience in his musical career.

Council Member (District 1) Natasha Harper-Madison and daughters Ruby & Magnolia:

I grew up swimming in pools and playing in parks on the east side of Austin and couldn't be more proud to have any part in the celebration of this unique, historic community. Ruby June, 11, is one of the happiest, most compassionate, loyal people I've ever known. She laughs loud, sings even louder, loves to read and makes friends everywhere she goes. Magnolia, 10, is an imaginative artist, has a beautiful voice and loves nature of all kinds- animals, plants, and the universe. She is curious and contemplative, strong, whip smart and believes in fairness deeply.

Materials involved in fabrication and installation of artwork:

- ¾ in vitreous glass tile (approx 20,000 individually hand-placed tiles)
- ¾ in plexiglass backing
- Laticrete Spectralock translucent grout (two-part epoxy adhesive)
- Sculpt Nouveau, black magic patina; steel paint; [link to spec sheet](#)
- Flood, penetrol; rust inhibitor ; [link to spec sheet](#)
- Rustoleum, ultimate polyurethane; sealer; [link to spec sheet](#)
- Altelix, Fiberglass FRP Din Rail Enclosure; Electronics Housing; [link to spec sheet](#)
- Meanwell, SDR-960-24; Power Supplies; [link to spec sheet](#)
- WAGO, TOPJOB terminal block; Power Bus; [link to spec sheet](#)
- SFERALABS, Strato Pi Server, Pi 4 with 2GB ram, UPS model; Light Controller; [link to spec sheet](#)
- Antaira, LNX-500A-T; Industrial Ethernet Switch; [link to spec sheet](#)
- DMXKing, eDMX4 PRO ISODIN; Artnet to DMX controller; [link to spec sheet](#)
- CommFront, RS485 Splitter; DMX signal duplicator; [link to spec sheet](#)

- WAGO, 221 Lever Nuts, Mounting Carrier; Used to connect power, signal to LED wire; [link to spec sheet](#)
- Generic conduit / junction boxes for running wires from the enclosure to the mosaic pieces
- EVERLITE, R42 Spectrum Module; LED Light; [link to spec sheet](#)

(5) A completed conservation report verifying that the Artist has provided a completed **Conservation Review Form**, attached as Exhibit F, to the City's arts conservator and has consulted with the City's arts conservator to assess the materials and maintenance requirements of the Artwork, resulting in a conservation report provided by the arts conservator to address potential conservation issues or concerns. The Artist shall submit a report and any resolution to the Final Design resulting from the art conservator's comments in the report.

See completed Conservation Report

(6) **Samples of all materials** proposed by the Artist to be used in the Artwork. On request by the City, the Artist shall provide the proposed quantities, manufacturer specifications, warranties, materials safety data sheets, and other requested information about the proposed materials.

See spec sheets and working prototype (pictures and video)

(7) A written **maintenance plan** that includes, but is not limited to, all technical information about the materials, the strength, durability, and maintenance requirements of the proposed Artwork, and any associated replacement costs.

Mosaic

No major maintenance beyond light cleaning should be required.

Lighting / Electronics

The highest mode of failure for the lighting system is individual LEDs going out. This will not likely be noticeable unless a critical number of LEDs go out. LEDs are hot swappable, as detailed in the maintenance, and referring to the spec sheet these lights are rated for 30,000 hours of usage. Assuming they are on for 6 hours a night, they should last around 13 years. At that time, a decision can be made to either replace the lights, or let the piece stand as a mosaic. The cost of replacing all LEDs would be \$3,600 at the time of writing.

If you'd wish to replace individual LEDs that could fail early, we can be contracted to do so, or we can write a guide on how to do it. We do not recommend anyone without electrical training endeavour to do so, though. We do plan on ordering extras in case we damage lights on installation.

The second most likely mode of failure is the raspberry pi computer. Because the pi is a single board computer, it has a simpler design than general purpose computers, which have an

average lifespan of 10 years. Also, since it is outfitted for industrial control, and only doing one simple process, the life expectancy should be closer to 20 to 25 years. Replacing the pi would be inexpensive and fast, and we can either be contracted to replace it upon failure, or provide a redundant unit with a written explanation on how to do so. Specific instructions and materials in doing so will be provided upon completion of the project.

Structural

If rust is beginning to appear on the frames, another coat of Sculpt Nouveau "Clear Guard" can be applied. Ideally this application happens every other year, but isn't entirely necessary as slight rust isn't a structural issue and can look good.

(8) If applicable or requested by the City, a written report from a Registered Accessibility Specialist indicating that all components of the Artwork are compliant with accessibility standards and requirements imposed upon the City by federal, state, or other applicable law, including but not limited to the Americans with Disabilities Act of 1990, as amended.

n/a

(9) A list of permits that will be required for the completion of the Artwork.

n/a

Rosewood Neighborhood Park - AIPP Project Budget Summary (Final Revised 5-12-2020)					
	Project	Mosaic	Tech/Lighting		
Costs					
Studio Rental (Muzacz + Polis)	\$ 2,400.00				
Insurance	\$ 200.00				
Community Engagement	\$ 576.00				
Photography for Mosaic	\$ 1,250.00				
Artist Fee (20% of commission)	\$ 8,800.00				
Materials					
Mosaic		\$ 4,302.00			
Lighting			\$ 4,329.00		
Framing		\$ 3,271.00			
Control			\$ 1,599.00		
Electrical			\$ 1,457.00		
Labor					
CNC		\$ 896.00			
Programming			\$ 1,440.00		
Framing		\$ 2,880.00			
Mosaic Tile Placement		\$ 4,500.00			
Mosaic Tile Adhesion		\$ 900.00			
Installation (\$4320 total)		\$ 2,160.00	\$ 2,160.00		
Subtotal	\$ 13,226.00	\$ 18,909.00	\$ 10,985.00	\$ 43,120.00	
Artist Contingency (2% of Artist Budget)	\$ 880.00			\$ 44,000.00	Total Artist Budget
Additional AIPP Program Contingency (3% of Artist Budget)	\$ 1,320.00				

(11) An *updated Schedule*.

May 2020 - Final Design Panel Presentation

If approved,

May 2020 - Fabrication of mosaic elements, steel frame and light backing/programming begins in studio

June 2020 - Fabrication complete, installation on-site

July 2020 (or later)- Unveiling celebration (post-Covid rules and restrictions may apply)

July 2020 - January 2021 - Monthly installation and technology maintenance checks

October - November 2020 - TCTA mosaic art project/lighting demo with teens at Rosewood Rec

January 2021 - January 2022 - Quarterly tech maintenance and installation checks