

---

# Austin Community Climate Plan 2020 Revision

May 20, 2020



OFFICE OF  
**SUSTAINABILITY**

CITY OF AUSTIN

---

# Agenda

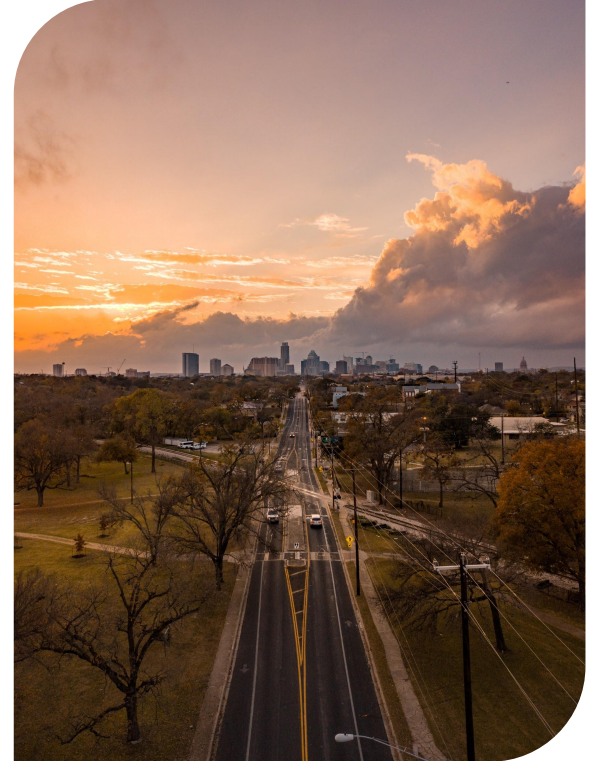
---

01 Goals of this Revision

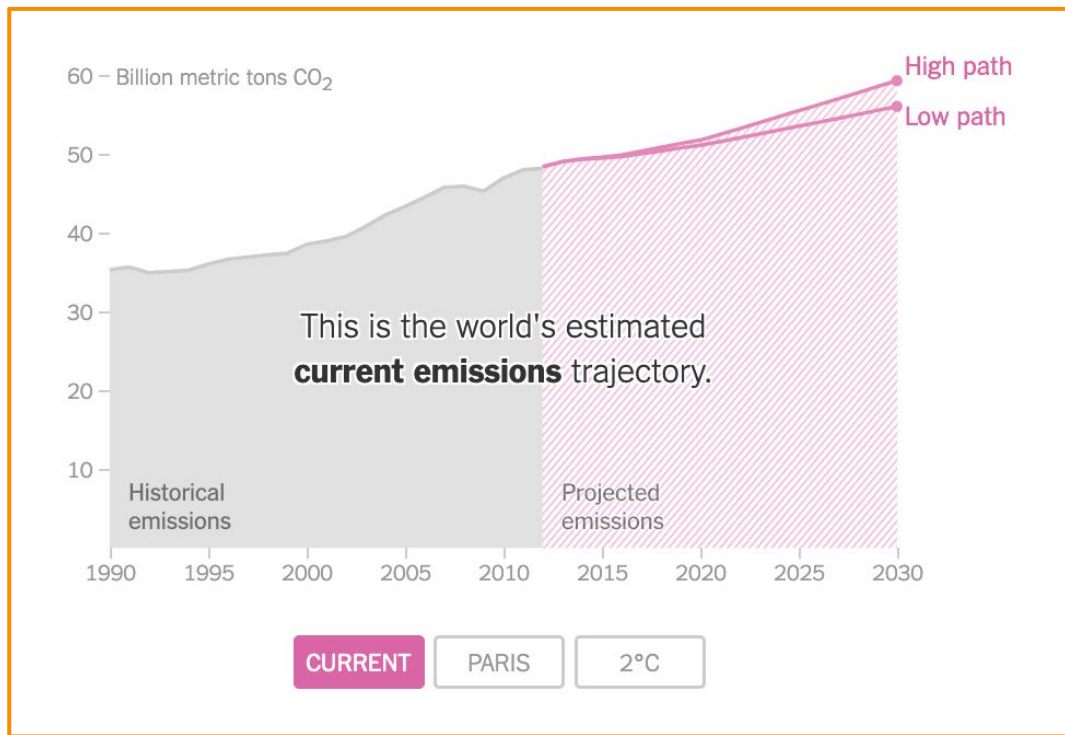
02 Process Overview & Schedule

03 Equity Tool

04 Next Steps

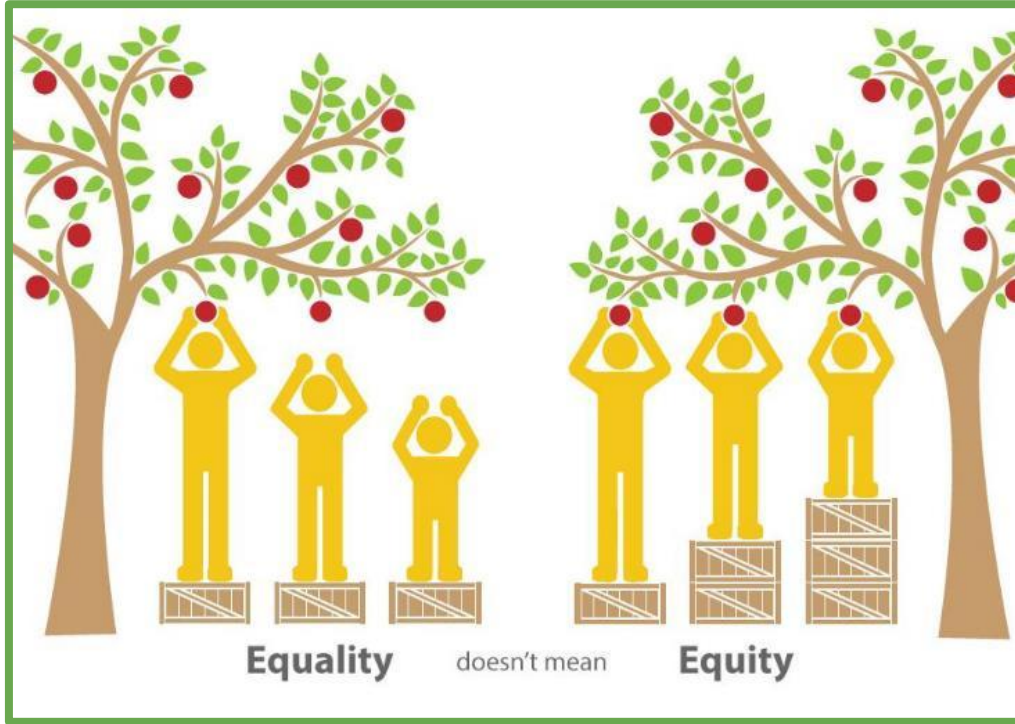


# We are Changing the Earth's Climate



*Warming over  
2°C could be  
catastrophic to  
life on earth*

# The City's Commitment to Equity



*Racial equity is the condition when race no longer predicts a person's quality of life outcomes in our community*

# Our Commitment to Climate Equity

## Climate Change

**Eliminate the use of fossil fuels for energy & transportation**

- Energy efficiency
- Renewable energy
- Less dependence on cars
- Electric vehicles
- More trees & natural spaces
- Healthier consumer choices

**Health**

**Affordability**

**Accessibility**

**Cultural Preservation**

**Community Capacity**

**Just Transition**

**Accountability**

## Racial Equity

**Eliminate disparities that can be predicted by race**

- Safety for all at all times
- No disproportionate economic outcomes
- Fair access to services for all
- Inclusive participation in our city
- Positive health outcomes for all
- Embrace culture & difference

# Why Equity and Climate?

- Climate change affects everyone, but doesn't impact all communities equally
- The systems that exploit the environment also exploit people
- Communities of color have wisdom and lived experience
- Designing solutions for those that need them the most will benefit everyone

*If we're not proactively addressing equity, we're perpetuating injustice*

# Goals of this Revision

## 2015 Community Climate Plan



### Austin COMMUNITY CLIMATE PLAN 2015



Electricity & Natural Gas

Transportation & Land Use

Materials & Waste Management

Industrial Processes



**130+**  
*actions*



## 2019 Climate Policy Directives

January



May



August





# Process Overview and Schedule

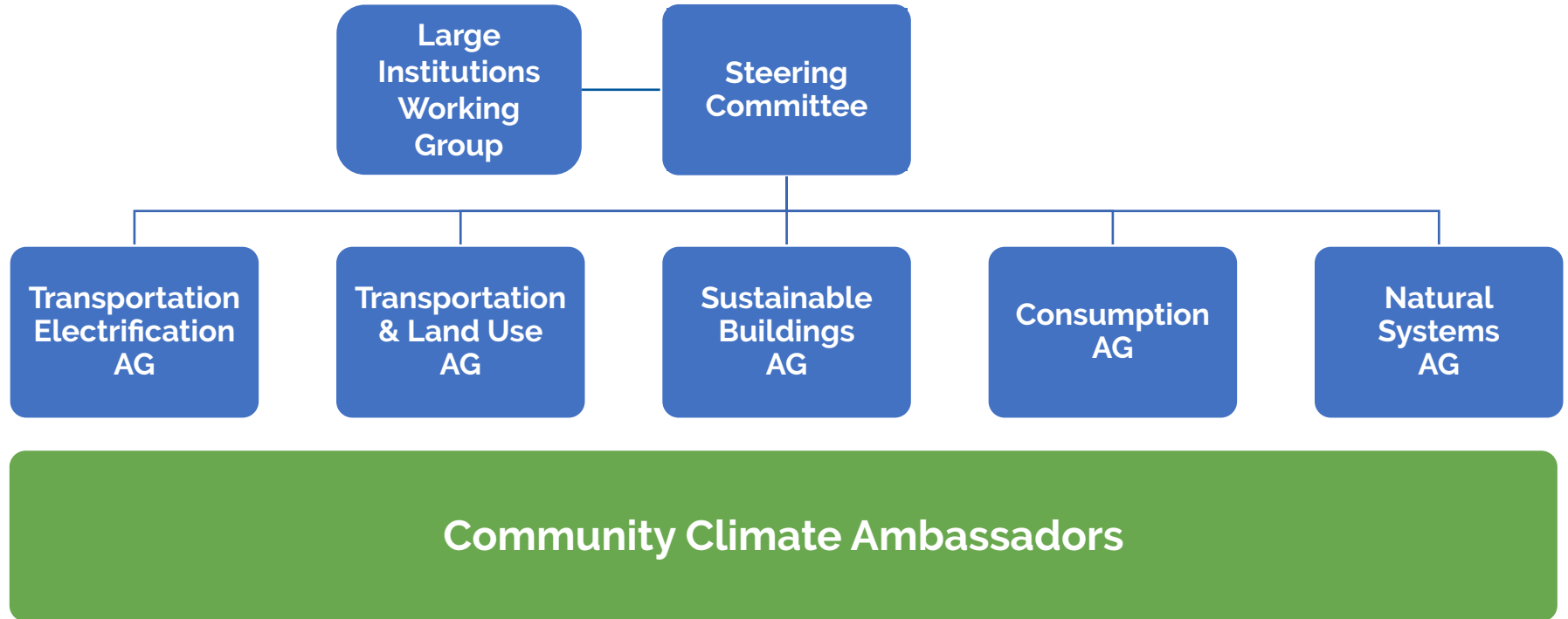
## A Plan Among Plans

### 5 Plan Sections:

- Sustainable Buildings
- Transportation Electrification
- Transportation & Land Use
- Natural Systems
- Consumption



# Process Overview and Schedule



# Process Overview and Schedule

## Equity-focused Engagement



# Equity Tool

---

# Evaluating Equity

*Our strategies must  
prioritize low income  
communities and  
communities of color  
in these ways:*

**Health** — Improving mental and physical health.

**Affordability** — Lowering and stabilizing living costs.

**Accessibility** — Increasing access to opportunities, transportation and a healthy environment.

**Just Transition** — Ensuring that benefits reach these communities first.

**Community Capacity** — Elevating and strengthening community skills, abilities and resources.

**Cultural Preservation** — Deliberately honoring cultural history to maintain past and present heritage.

**Accountability** — Ensuring government and institutional accountability for equitable implementation.

# Equity Process for Advisory Groups



# Next Steps

---



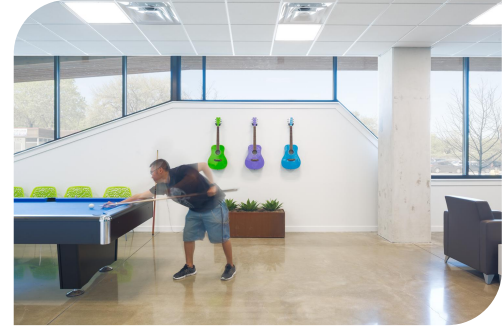
# Next Steps

## 5 Goal Areas

### 1 Consumption of Goods



### 2 Sustainable Buildings



### 3 Natural Systems



### 4 Transportation & Land Use

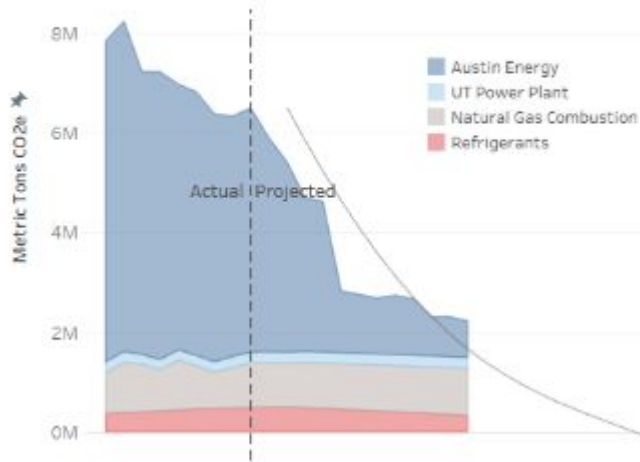


### 5 Transportation Electrification

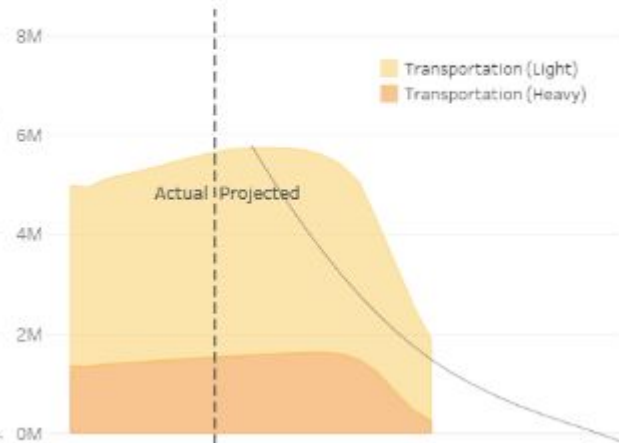


# Emissions Projections & Modeling

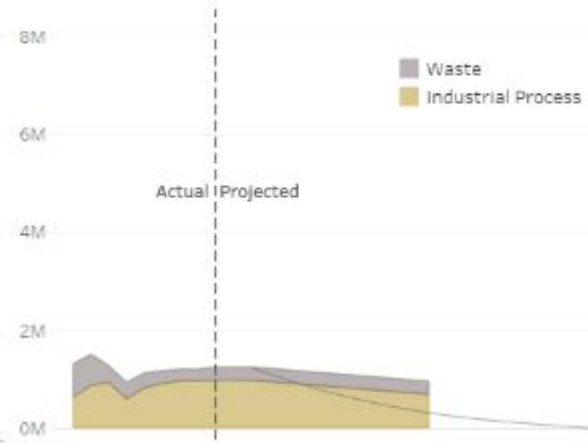
### Buildings



### Transportation



### The Rest



# Schedule

---

**May**

Defining goals & strategies,  
drafting the plan

**June**

First full draft of the plan

**July**

Internal reviews

**Aug.**

Boards + Commissions review,  
public comment period

**Sept.**

Finalize and present to council



# Thank you!

## Questions? Contact:



**Zach Baumer**

[zach.baumer@austintexas.gov](mailto:zach.baumer@austintexas.gov)



**Phoebe Romero**

[phoebe.romero@austintexas.gov](mailto:phoebe.romero@austintexas.gov)



**Celine Rendon**

[celine.rendon@austintexas.gov](mailto:celine.rendon@austintexas.gov)



## More information:

- [austintexas.gov/climateplan](https://austintexas.gov/climateplan)
  - [SpeakUp Austin!](#)
-