

0 500 1,000 2,000 3,000 Feet

**W.W. S.E.R. Name: Pearson Ranch West (Revised)**

**W.W. S.E.R. Number: 4499R**

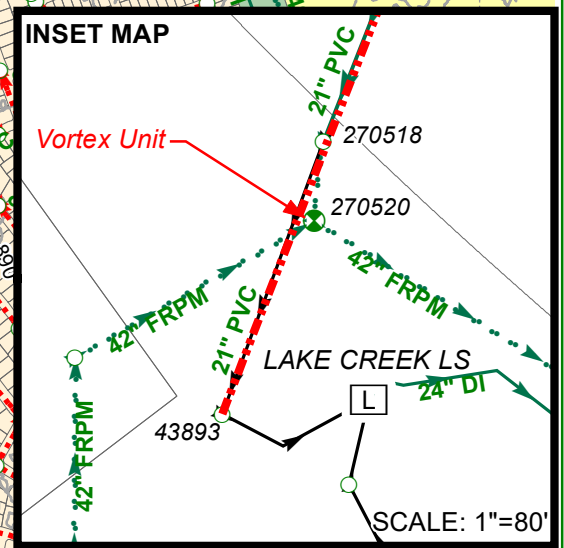
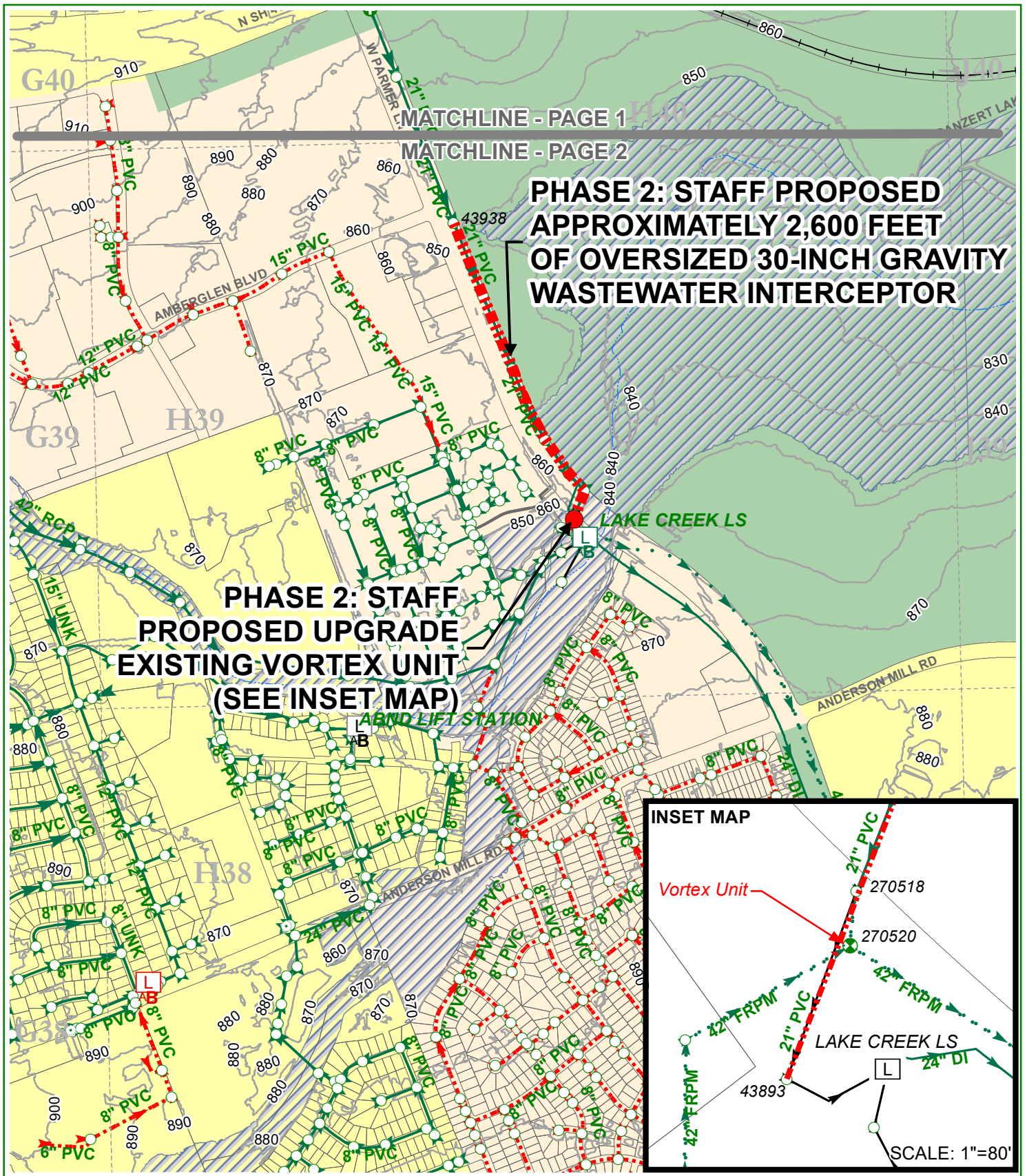
Utility Development Services Plotted 03/11/2020

Page 1 of 1

This product is for informational purposes and may not have been prepared for or be suitable for legal, engineering, or surveying purposes. It does not represent an on-the-ground survey and represents only the approximate relative location of the property boundaries. This product has been produced by the City of Austin for the sole purpose of geographic reference. No warranty is made by the City of Austin regarding specific accuracy or completeness.

**DRAFT**

- Subject Tract
- 100-yr FEMA Floodplain
- Full-Purpose City Limit
- 2-Mile ETJ
- Limited-Purpose City Limit
- City of Round Rock ETJ



0 500 1,000 2,000 3,000 Feet

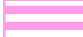


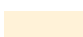

**W.W. S.E.R. Name: Pearson Ranch West (Revised)**

**W.W. S.E.R. Number: 4499R**

Utility Development Services Plotted 03/11/2020

Page 2 of 2

**DRAFT**

-  Subject Tract
-  100-yr FEMA Floodplain
-  Full-Purpose City Limit
-  2-Mile ETJ
-  Limited-Purpose City Limit

This product is for informational purposes and may not have been prepared for or be suitable for legal, engineering, or surveying purposes. It does not represent an on-the-ground survey and represents only the approximate relative location of the property boundaries. This product has been produced by the City of Austin for the sole purpose of geographic reference. No warranty is made by the City of Austin regarding specific accuracy or completeness.