

1. North Lamar Boulevard AIPP Corridor Project

North Lamar Boulevard is a busy roadway in North Austin that connects commuters to the heart of the city. While segments of this roadway lack safe pedestrian and bicycle facilities, it remains a popular corridor for multiple modes of transportation. North Lamar Blvd is a major transit route and is home to the North Lamar Transit Center, which serves as a hub to several popular bus routes.

Historical Context

What is now North Lamar Boulevard was once part of State Highway 2, which was a road constructed in the early 1900s that connected Laredo, San Antonio, Austin, Waco, Fort Worth and Oklahoma. Over the years, this corridor has held multiple titles, but ultimately it was named for Republic of Texas President (1838-41) Mirabeau Buonaparte Lamar.

Places of the Past: A Vibrant History

In the 1900s, North Lamar Boulevard hosted an eclectic entertainment scene. From the old Coxville Zoo to the Chief Drive-In movie theatre, there were plenty of attractions along North Lamar Blvd to keep Austinites entertained at the turn of the century. There were also iconic music venues along this roadway such as the Skyline Club, which boasted performances by Elvis Presley, Hank Williams and Johnny Horton. Also once located along North Lamar Boulevard was the Bullhead Inn of the 1920s and 1930s. Bonnie and Clyde are said to have visited this popular spot, which is now an empty lot a few hundred feet south of Yager Lane.



Source: Copperfield/Northeast Austin History Project

Culture and Arts of Corridor

Today, North Lamar Boulevard runs through some of the most culturally diverse communities in the city. One of the roadway's most popular destinations is its International District, which consists of nearly 70 businesses that share foods and goods from all over the world. Also, not exclusive to the International District, are the many local businesses that line the corridor. In the early 1900's, North Lamar began as State Highway 2, beginning in Laredo through to Oklahoma. In 1927, TxDOT re-designated as US Hwy 81 as was referred to as "Lower Georgetown Road" because of its connection to north Austin. The North Lamar Corridor has a rich history of dance and live music clubs from the 1930s through 1960's, as well as drive in movie parks. The North Lamar of today is a cosmopolitan corridor with international residents and small businesses and a multilingual community.



Source: austin.photosandpictures.net

Possible Stakeholders:

- Austin Voice
- Restore Rundberg
- GAVA
- North Austin YMCA
- Gus Garcia Recreation Center Advisory Board
- Friends of the Walnut Creek Library
- GANA Neighborhood Association

Artwork Opportunity

The Art in Public Places opportunities are expected to be located in N. Lamar Corridor between US 183 to Rundberg Ln. and between Rundberg Ln. to Parmer Ln.

Budget A: \$85,000 **US 183 to Rundberg Ln.**

Budget B: \$85,000 **Rundberg Ln. to Parmer Ln.**

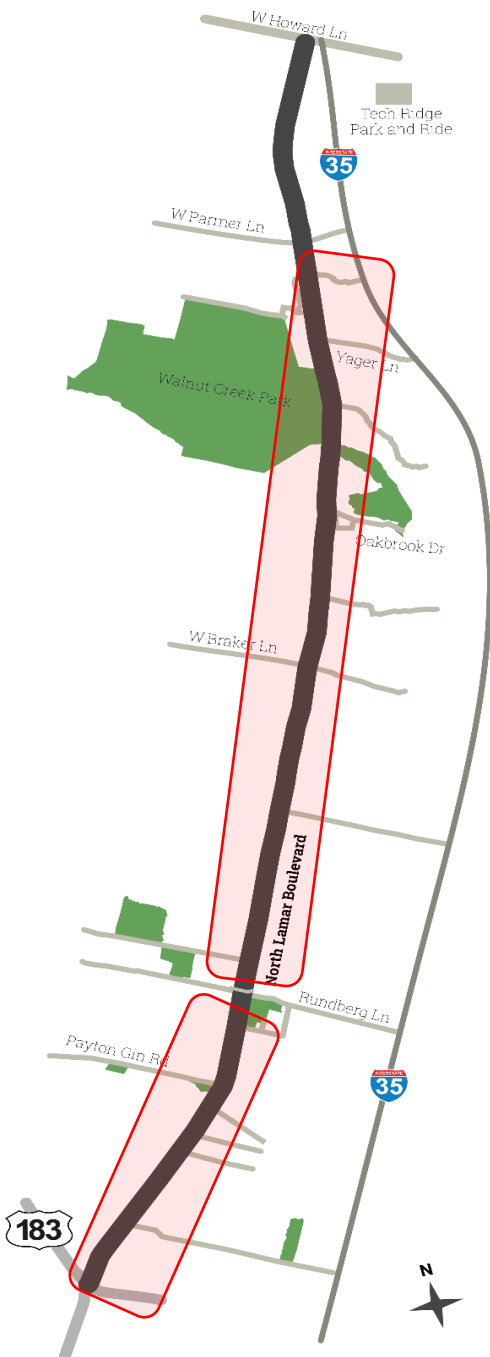
The Corridor Construction Program construction project enhancements between US 183 and Howard Lane/I-35. Improvements on N. Lamar Boulevard are expected to reduce vehicular delay, improve effectiveness of transit, as well as create continuous ADA-compliant sidewalks and continuous bicycle facilities along the entire length of the corridor, new ADA-accessible curb ramps, re-striping high-visibility crosswalks, and adding new smart traffic signals.

Corridor Construction Program project construction began in December 2019.

Identified possible opportunities for AIPP artwork are located in the following 6 areas.

1. Walnut Creek Park District: Parmer Ln. to Oakbrook Dr.
2. Marketplace Austin: Applegate Dr./Grad
3. International District: Payton Gin to Scurry St.
4. Payton Gin Rd. & Little Walnut Creek
5. Rundberg Ln.
6. US HWY 183 Gateway

For more information about the Corridor Construction Program project: www.austintexas.gov/NorthLamar



2. Burnet Road Corridor AIPP Corridor Project

Today, Burnet Road is a mainstay of Austin culture. The 5-mile corridor provides access to businesses, shopping centers, restaurants, neighborhoods, and mixed-use developments. The surrounding community relies on Burnet Road to connect to work, school, recreation, and entertainment, making it a vital corridor in our City. The Corridor Construction Program project enhancements will be between Koenig Lane to MoPac Expressway.

Historical Context

Burnet Road used to be known as Upper Georgetown Road, when its main purpose was to provide farmers access to the markets in town as well as keep Austin and Georgetown connected. The road,



<https://texashistory.unt.edu/ark:/67531/metaph123951/m1/1/>

Austin History Center, Austin Public Library

previously serving as a city limit, divided the area between the commercial district and the undeveloped or farm land.

In the 1930s and 1940s, the first subdivisions along Burnet Road started appearing, including the Rosedale and Brentwood neighborhoods. Growth and development continued to spread in the 50s and 60s, as World War II soldiers returned home to their families and began purchasing homes. It was after this that the Crestview and Allendale neighborhoods were built.

As more residents moved to the area, businesses began to pop up to conveniently provide access to local goods and foods for the community. Gas stations, grocery stores, and automobile services

Culture and Arts of the Corridor

Sometimes referred to as, “Austin’s New Downtown,” The Domain is a popular office, retail, and residential center that today houses 1.8 million square feet of retail space for bars, restaurants and stores. The mega-site provides the community with a wide variety of places to dine and shop, as well as enjoy entertainment like live music and other activities. Additionally, several well-known companies have offices at The Domain including Amazon, Facebook, and Vrbo, making it a convenient place to work and live.

Originally named the Off-Campus Research Center, this once federally owned magnesium plant has housed several tenants who have made significant contributions to the areas of defense, nuclear physics, and space flight. After the University of Texas bought the campus from the U.S. Government, with help from Congressman Lyndon B. Johnson, the University renamed it after Congressman and UT alumnus J. J. Pickle for his role in



<https://lostinatx.org/listing/top-notch-hamburgers/>

Austin History Center, Austin Public Library

bringing major research efforts to the campus. It continues to serve as a research facility for the University today.

Iconic Spots

Fans of TV and film might recognize a couple of notable places along the Burnet Road corridor. Top Notch, a popular drive-in restaurant that has been serving up burgers and pie for 49 years, appeared in the film *Dazed and Confused*, where Matthew McConaughey first coined the now famous line, “Alright Alright Alright.” Dairy Queen on Burnet Road is another spot fans of the show *Friday Night Lights* might recognize as “The Alamo Freeze,” where the Dillion Panther football team and their devotees would enjoy a dessert after snagging a “W” in a game.

Possible Stakeholders:

- Allandale Neighborhood Association
- Crestview Neighborhood Association

Artwork Opportunity

Art in Public Places opportunity is expected to be located between White Horse Trail and US 183.

Budget: \$139,000

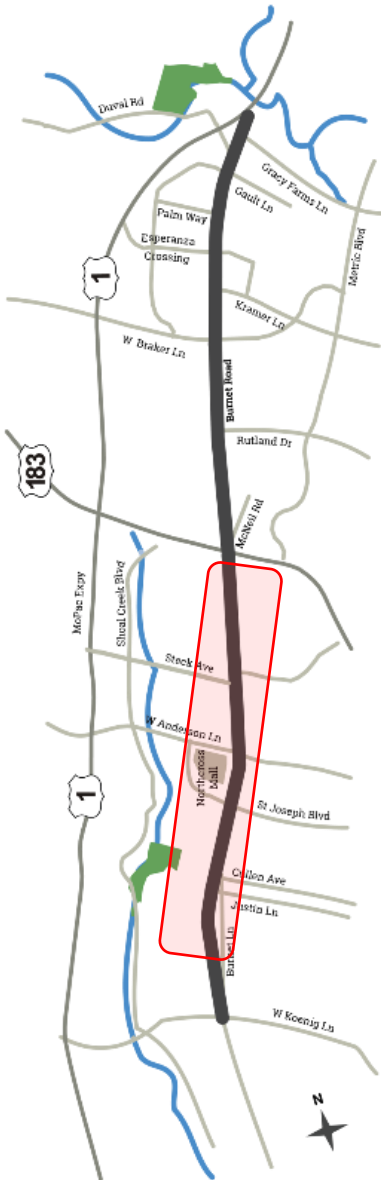
The City of Austin is currently conducting an environmental analysis of mobility and safety improvements on Burnet Road between U.S. 183 and the MoPac frontage road to understand the potential impacts. The analysis was conducted in accordance with the National Environmental Policy Act for this state-owned portion of Burnet Road.

The Corridor Construction Program improvements include upgraded traffic signals, drainage, intersection turn lane modifications, ADA sidewalks, median islands and bus stop improvements. Construction is scheduled to start in late 2020 with anticipated completion in 19 months.

Identified artwork opportunities are located as the following 5 areas.

1. Gualt Lane Gateway
2. W. Braker Lane
3. US HWY 183
4. Burnet Lane triangle
5. Koenig lane/Allandale Road Gateway

For more information about the Corridor Construction Program project: austintexas.gov/Burnet



3. Guadalupe Street AIPP Corridor Project

Guadalupe Street's long history contributes to the unique legacy and spirit of Austin. This corridor is treasured by Austinites and is a destination for many of our tourists. The portion of Guadalupe Street referred to as The Drag goes right through the heart of the University of Texas, and like the rest of this street, it is sprinkled with unique shops, restaurants and businesses.

Historical Context

In 1839, Republic of Texas President Mirabeau Lamar commissioned Edwin Waller to lead the development of Austin. Guadalupe Street was among the north-south, river-named streets included as part of Austin's original street grid.

"The Drag," which is the section of Guadalupe Street that runs through the University of Texas campus, gets its name from streetcars that were dragged by mules in the late 19th century. Over time, the Drag evolved from a streetcar route in the heart of early Austin to a hub of activism during the Civil Rights Era.

In 1961, University of Texas students advocating for desegregation began peaceful stand-in protests at the Texas and Varsity Theaters. UT had been desegregated for a few years prior, but businesses surrounding the university had not yet followed in the school's footsteps. The protests, supported by UT faculty and staff, led to the desegregation of the local theaters as well as other nearby businesses. It is believed that the Texas and Varsity Theatres were among the first businesses in Austin to become desegregated.

Culture and Arts of the Corridor

Guadalupe is home to several classic murals, such as the "Hi, How Are You" mural created by iconic Austin musician Daniel Johnston, and the "Austin, TX" mural that serves as a popular photo-op for visitors.

The road also has made its mark in national pop culture, with several locations appearing in scenes from Richard Linklater's 1991 cult classic *Slacker*. Many of *Slacker*'s best-known vignettes and scenes take place at key intersections or stretches of Guadalupe and are still recognizable today. In 2012, The film was selected for preservation in the United States National Film Registry by the Library of Congress as being "culturally, historically, or aesthetically significant."



Photograph of "The Drag" in 1927
(Source: Austin History Center, Austin Public Library)



UT Students "Stand-In" to protest segregation at The Varsity (Source: The University of Texas History Corner)

Possible Stakeholders

- Texas Ex's
- West Austin Neighborhood Association
- Additional neighborhood associations and stakeholders
- Staff from Landmarks, the public art program at UT Austin

Artwork Opportunity

Art in Public Places opportunity is expected to be located on 24th St. between Guadalupe to Lamar.

Budget: \$63,000

Transportation and mobility improvements are coming to the Guadalupe Street corridor between 18th Street and West 29th Street, West 24th Street between Guadalupe Street and North Lamar Boulevard, and Nueces Street from 24th Street to Guadalupe Street. Improvements include upgraded traffic signals, drainage, intersection turn lane modifications, ADA sidewalks, median islands and bus stop improvements.

Identified artwork opportunities are located as the following

1. Guadalupe at 29th St.
2. The Drag District: Dean Keeton St. to W. MLK
3. Guadalupe at West 24th St. Gateway
4. W. 23rd St. and UT's West Mall area
5. Guadalupe at W MLK Jr. Blvd Gateway
6. W 24th St at San Gabriel St.
7. W. 24th at N Lamar Blvd.



For more information about the Corridor Construction Program project:

www.austintexas.gov/guadalupestreet

4. Airport Boulevard AIPP Corridor Project

A microcosm of Austin's growth, the history of Airport Boulevard narrates the expansion and growth of the city, inter-mingling the new with the old and creatively re-vitalizing while striving to honor historic roots.

Historical Context

Airport Boulevard (Loop 111) was originally built along the southern border of the Robert Mueller Municipal Airport when it began operations in 1930. As the city grew, houses and businesses began to populate the roadway, many of which would gain iconic status in years to come. In 2019, a state bill filed by State Representative Sheryl Cole effectively renamed the portion of Airport Boulevard between its northern intersection with Levander Loop and its intersection with Parkwood Road as the "Richard Overton Memorial Highway" in honor of America's oldest WWII veteran who lived to be 112 years old and passed in 2018. The main terminal of the Robert Mueller Municipal Airport was dedicated in 1961, and the tower remains today as a focal point in the Mueller Development.



Source: Austin Bergstrom International Airport

Culture and Arts of Corridor

Highland Mall, Austin's first indoor shopping mall, opened in 1971 and only recently closed in 2015. The old mall has since been transformed to a college and is now the site of Austin Community College's Highland Campus.

Near the site of Highland Mall, travelers along Airport Blvd can find historic Austin businesses such as Mrs. Johnson's Bakery, Lammes Candies, the Tamale House, Quality Seafood Market, I Luv Video (America's oldest video store), and Dan's Hamburgers, all of which are still operating today.



Highland Mall in 1971

(Source: Austin History Center, Austin Public Library)

Artists Abound

In the early 2000's, East Austin began to see an increase in the number of artists living and working in the area. Places like Canopy, a warehouse turned studio complex, and Springdale General provided space to incubate creativity along this corridor.

Possible Stakeholders

- Clarkson Business District
- Mueller Neighborhood Association
- PODER
- Springdale-Airport Neighborhood Association

Artwork Opportunity

The Art in Public Places opportunities are expected to be located between MLK Jr Blvd. and US 183 and between 55th St and 45th St.

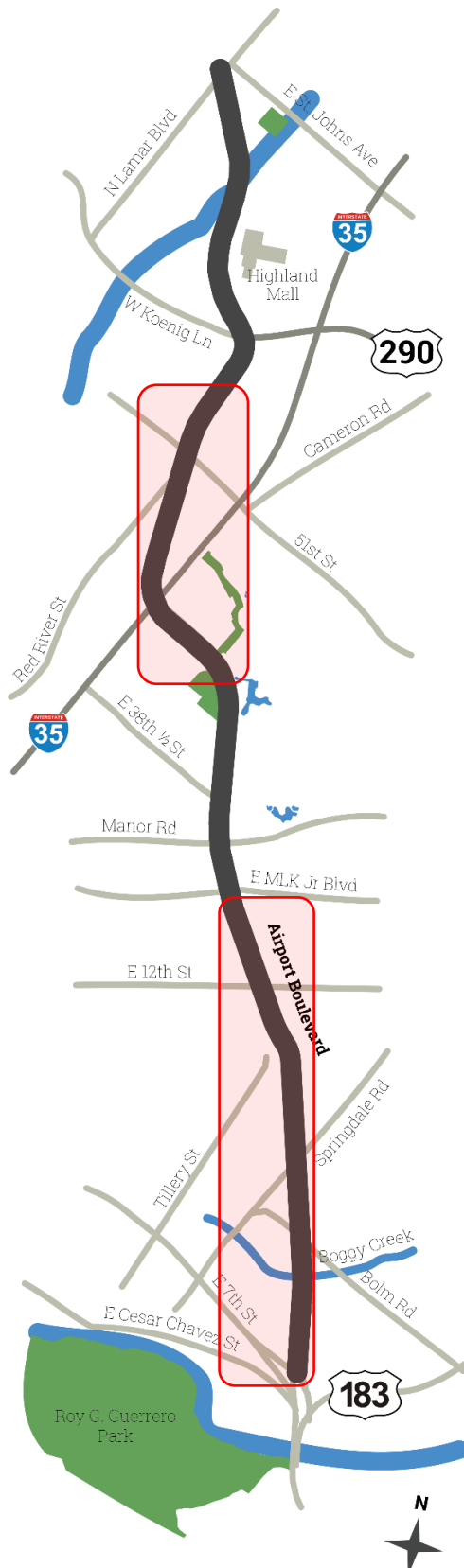
Budget A: \$100,000 between MLK Jr Blvd. and US 183.
Budget B: \$100,000 between 55th St and 45th St.

The Corridor Construction Program improvements include enhancements between North Lamar Boulevard and US 183. Improvements include upgraded traffic signals, drainage, intersection turn lane modifications, ADA sidewalks, median islands and bus stop improvements.

Identified artwork opportunities are located as the following areas.

1. North Lamar Blvd. and Airport Blvd
2. Highland area between HWY 183 to North Lamar Blvd.
3. Clarkson Business District: W 48th to W 55th St
4. Parkwood Road
5. Manor Road
6. E MLK Jr Blvd.
7. East 12th St.
8. Bolm Rd.

For more information about the Corridor Construction Program project: www.austintexas.gov/AirportCorridor



5. East MLK Jr. Boulevard / FM 969 AIPP Corridor Project

East Martin Luther King Jr. Blvd/FM 969 is located just east of US 183 and north of the Colorado River, extending through Travis County to Bastrop County. This family-oriented community thrives on its diverse neighborhoods and access to trails and parks such as the Little Walnut Creek Greenbelt.

Historical Context

In 1941, the Highway designation FM (Farm-to-Market), was first used in Texas, and in 1945, Texas Legislature approved a three-year pilot program for FM road construction, to which FM 969 was considered a pilot program road. Formerly known as 19th Street, the City of Austin officially changed the name of this road to Martin Luther King Jr. Boulevard in April 1975 to honor the late Dr. Martin Luther King Jr.

Culture and Arts of Corridor

Originally inhabited by Native American hunter-gatherers known as the Tonkawas, Walnut Creek served as a resource for food and water for this tribe. Native American artifacts have been found along Walnut Creek that continues to reveal the rich history of what is now called Travis County. The East Martin Luther King Jr. Boulevard/FM 969 corridor consists of many pockets of nature and serves as a route to get to various parks and trails such as the Little Walnut Creek Trail to the Springdale Park, as well as the Meadows at Trinity Crossing and the John Trevino Jr. Metro Park at Morrison Ranch.

Possible Stakeholders

- Nearby Business District
- Schools
- Churches
- Neighborhood Association



Photo of Native American artifacts found during an archeological dig along Walnut Creek (Source: Texas Historical Commission, 1981)

Artwork Opportunity

Art in Public Places opportunity is expected to be located between US 183 and Decker.

Budget: \$63,000

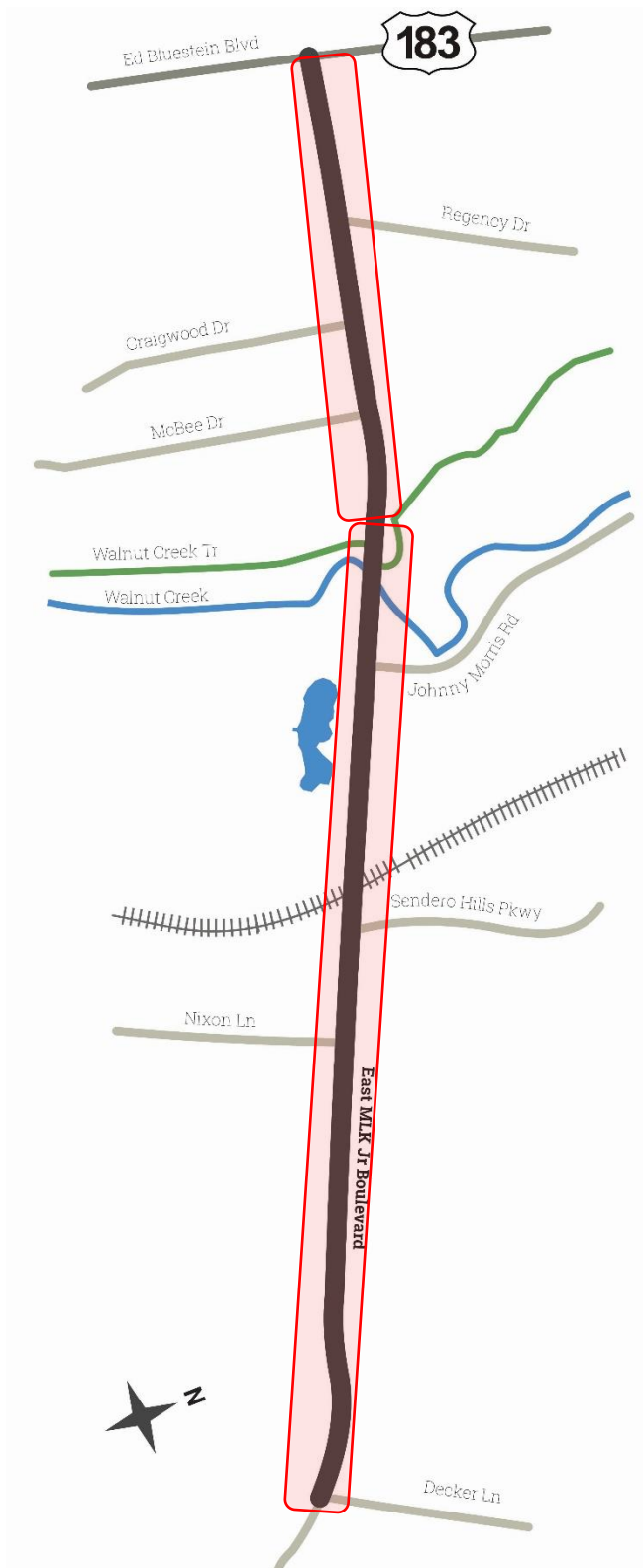
The Corridor Construction Program improvements include enhancements between US 183 and Decker Lane. Mobility improvements are coming to East Martin Luther King Jr. Boulevard/FM 969 between US 183 and Decker Lane.

Improvements include upgraded traffic signals, drainage, intersection turn lane modifications, ADA sidewalks, median islands and bus stop improvements.

Identified artwork opportunities are located as the following areas.

1. Walnut Creek Trailhead: near Johnny Morris Rd
2. Walnut Creek District: Johnny Morris to Sendero Hills
3. Decker Ln.

For more information about the Corridor Construction Program project: www.austintexas.gov/eastmlk



6. South Lamar Boulevard AIPP Corridor Project

South Lamar's distinct character helps to define the vibrancy of South Austin and serves as a gateway into downtown. With a number of historic and iconic businesses, South Lamar has a thriving food and entertainment scene, and it serves as a connector to many of Austin's most frequented greenspaces and waterways.

Historical Context

Formerly called Oak Hill Road, Evergreen Road, Butler Road and State Highway 20, South Lamar Boulevard was eventually named after Republic of Texas President Mirabeau Buonaparte Lamar in 1942 with the completion of the South Lamar Boulevard Bridge across the Colorado River.

Culture and Arts of Corridor

Lively Music Scene

The Broken Spoke, established in 1964, is one of the "last of the true Texas dance halls." Still beloved today, many well-known acts have come through the Broken Spoke including Willie Nelson, Bob Wills and His Texas Playboys, Tex Ritter, Ray Price and Ernest Tubb. Texas favorites, including the Dixie Chicks and George Strait, played the Broken Spoke when they were just coming onto the scene.



Source: Christopher Rose

The Austin City Limits Music Festival is held right off the corridor, bringing 450,000 visitors to Zilker park each year. Other nearby arts destinations include the Zach Scott Theater and the Dougherty Arts Center. Visitors and residents enjoy the thriving scene, including dining and playing at iconic places like Matt's El Rancho and Peter Pan Golf.

Connector to Nature

South Lamar helps connect Austinite's to the Barton Creek Greenbelt, Lady Bird Lake, Barton Springs and Zilker Metropolitan Park, celebrating the natural beauty of Austin's parks and greenspaces.

Possible Stakeholders

- South Lamar Business District
- Schools
- Churches
- Nearby Neighborhood Associations

7. East Riverside Drive AIPP Corridor Project

East Riverside Drive is located south of the Colorado River and southeast of Downtown Austin. This lively community is characterized by the juxtaposition of the old and the new. Over recent years, the community of East Riverside has experienced an exponential amount of growth and development. Luxury apartment buildings have popped up, and the area is teeming with trendy shops and restaurants. With a high number of working-class families residing in the area, this rapid expansion creates challenges to offer affordability and equity for the existing residents of the community.

Historical Context

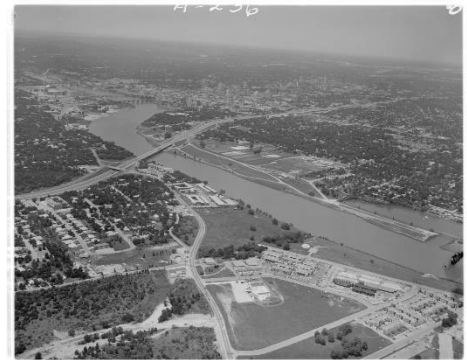
Until the mid-20th century, the East Riverside-Oltorf area remained primarily rural. In the 1970s, the City of Austin partnered with the University of Texas to build off-campus housing for students between East Riverside and Lakeshore Drive. Following the closure of Bergstrom Air Force Base in 1993, the demographics of the neighborhood began to change. In the 1990s, the East Riverside-Oltorf neighborhood became one of Austin's most popular sites for immigrant households, primarily from Mexico, Latin America, and Asian countries

Culture and Arts of Corridor

Lively Music Scene and Night Life

Emo's, originating in the punk rock era of the early 90's, brought an authentic personality that helped shape Austin's thriving live music scene. The new location on East Riverside Drive, formally the influential Back Room, now boasts a state-of-the-art sound system, quality lighting and staging capabilities. Other nightlife along the corridor includes Club Carnaval, Discoteca Furia, Come and Take it Live, and The Jackalope South Shore.

The corridor is home to the East Riverside Spirits and Music Festival which takes place at a lot outside the Austin Music Foundation (AMF), a nonprofit organization whose mission is to strengthen, connect, and advance the local music industry and community through educational programming, professional development, and focused mentoring.



Source: Austin History Center, Austin Public Library. Photo by Neal Douglass. Aerial View of Town Lake, May 20, 1968;

Latinx Owned Businesses

Many Latinx owned businesses reside on East Riverside Drive, including Resistencia Books, La Michoacana Meat Market, and numerous food establishments.

Possible Stakeholders

- PODER
- East Riverside Neighborhood Associations
- Schools
- Churches

Artwork Opportunity

The Art in Public Places opportunities are expected to be located between Montopolis Dr. and SH 71 and between I-35 to Shore District Dr.

Budget A: \$100,000 Montopolis Dr. to SH 71.

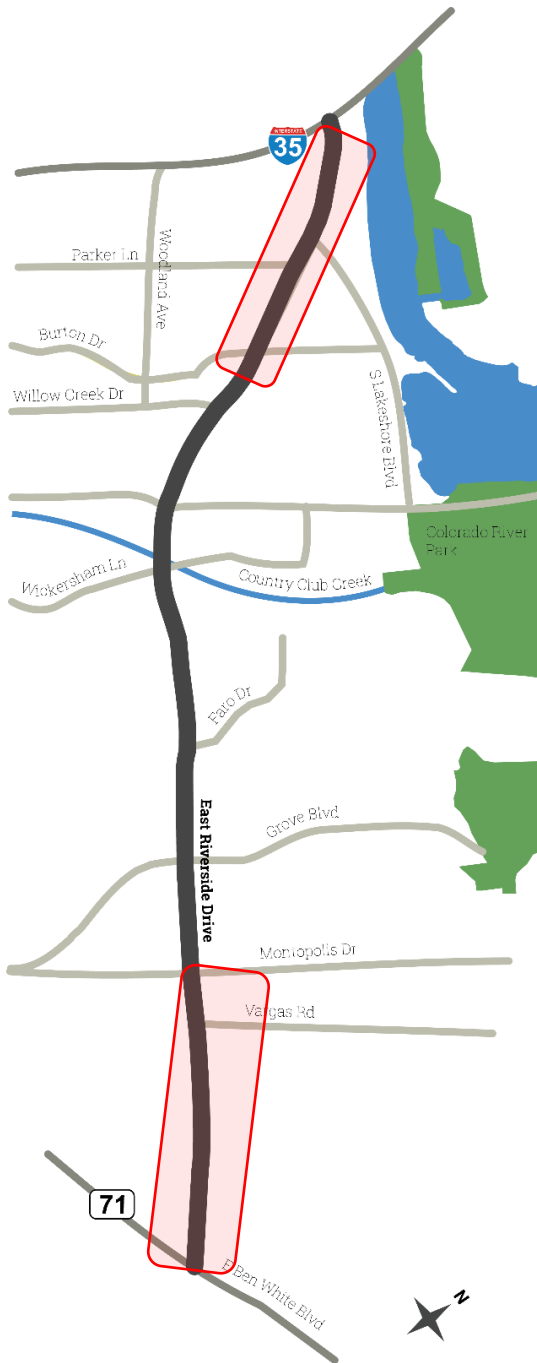
Budget B: \$100,000 I-35 to Shore District Dr.

The Corridor Construction Program improvements are to be located between I-35 and SH 71. Improvements include upgraded traffic signals, drainage, intersection turn lane modifications, ADA sidewalks, median islands and bus stop improvements.

Identified artwork opportunities are located in the following 5 areas.

1. I-35 Gateway
2. Lakeshore District: I-35 to Tinnin Ford
3. South Pleasant Valley
4. Grove Blvd.
5. Montopolis Dr.

For more information about the Corridor Construction Program project: www.austintexas.gov/Riverside



8. William Cannon Drive AIPP Corridor Project

At 11.75 miles in length, William Cannon Drive is the longest of the nine roadways included in the Corridor Construction Program. William Cannon Drive is located in suburban South Austin and serves as one of the city's major east-west corridors. For much of its existence, the roadway cut through rural farmland and connected residential neighborhoods. Like much of Austin, this corridor has seen a lot of growth, and it has become a critical arterial, connecting its many residents to shopping, restaurants and parks in their community.

Historical Context

This roadway gets its name from William Cannon, a Texas Revolution veteran best known for his role in the Battle of San Jacinto. In the early 1800s, Mr. Cannon owned land and a trading post located along Onion Creek. The original portion of the road was built in the 1960s as a smaller arterial loop south of US 290. Overtime, the roadway expanded, and its current alignment was completed in the late 1980s. Prior to that time, most of the corridor was either rural farmland or consisted of small residential developments. Throughout the early 1990s, a growth in residential and commercial development occurred, reflecting much of the character we now see today.

Culture of the Corridor

Many perceive William Cannon Drive as a car-centric corridor that is used by commuters to travel between point A and point B. But as the neighborhoods along this roadway continue to grow into residential and commercial hotspots, there is opportunity for placemaking and keeping projects that amplify what makes this region of Austin so special.

Gateway to the Outdoors

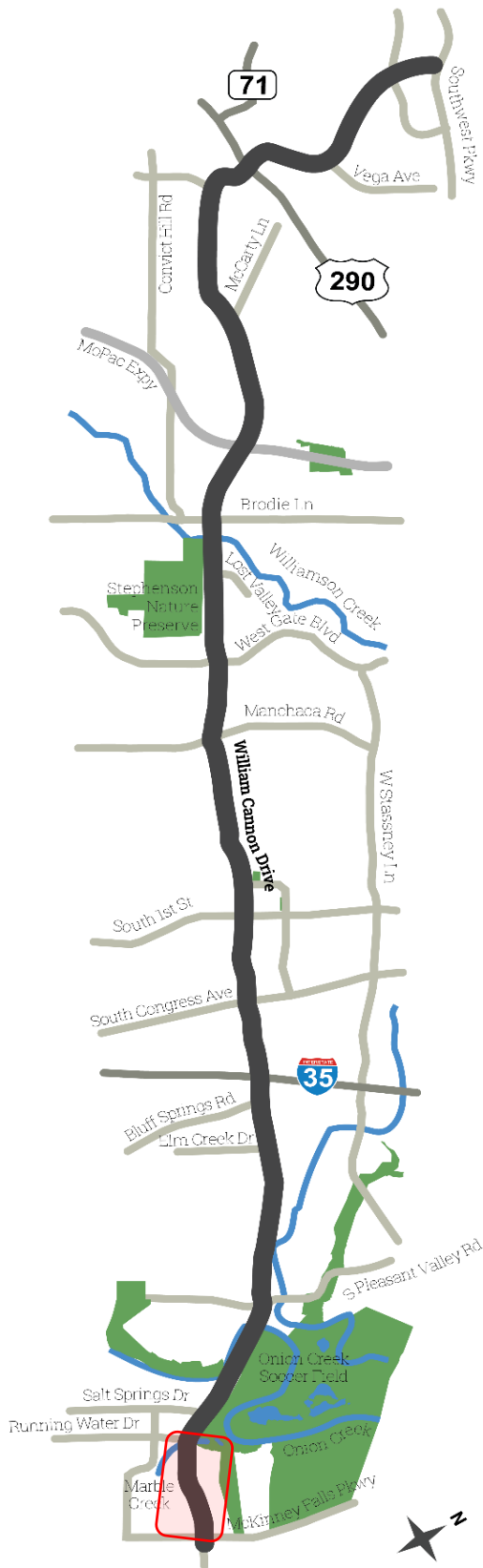
In addition to connecting Austinites to restaurants, businesses and homes, William Cannon Drive connects adventurers to Austin's backyards—its parkland. William Cannon Drive provides access to McKinney Falls State Park, Springfield Neighborhood Park, Roy Kizer Golf Course, Onion Creek Soccer Complex, Stephenson Nature Preserve, Latta Branch Greenbelt, Armadillo Neighborhood Park, and close connection to the historical Convict Hill Quarry Park, which was sourced for limestone used to build the Texas State Capital.



Source: Larry D. Moore, CC BY-SA 3.0, Wikimedia Commons

Possible Stakeholders

- Nearby Neighborhood Associations
- Schools
- Churches
- Austin History Center



Artwork Opportunity

The Art in Public Places opportunity is expected to be located between Running Water Dr. and McKinney Falls Pkwy.

Budget: \$104,000

The Corridor Construction Program improvements are to be located between Southwest Parkway and McKinney Falls Parkway. Improvements include upgraded traffic signals, drainage, intersection turn lane modifications, ADA sidewalks, median islands and bus stop improvements.

Identified artwork opportunities are located in the following 5 areas.

1. Brodie Ln. and Mopac
2. S. Congress Ave.
3. South Pleasant Valley Rd.
4. Salt Springs Rd.
5. McKinney Falls Parkway

For more information about the Corridor Construction Program project: www.austintexas.gov/WilliamCannon

9. Slaughter Lane AIPP Corridor Project

Slaughter Lane serves as one of the City's major horizontal thoroughways and is the southernmost roadway included in the Corridor Construction Program. Similar to its paralleled neighbor William Cannon Drive, Slaughter Lane has seen an explosive amount of development over the years. While some segments of Slaughter Lane have retained its rural roots, much of the roadway now hosts sprawling residential neighborhoods and bustling shopping centers.

Historical Context

This roadway is named after the nearby Slaughter Creek, which gets its namesake from pioneer Stephen F. Slaughter. One of the earliest white settlers in what is now Travis County, Mr. Slaughter had received a large grant of land in the south Austin area in 1835.

Over the years, the land that contains Slaughter Lane has transformed with major residential and commercial development. But not too long ago, Slaughter Lane was still known to Austinites as a quieter part of town that felt more secluded from urban life than it does today. Native Austinite and Corridor Program Project Manager for Slaughter Lane Greg Weems recalls life along Slaughter in the 1980s, when he was in grade school:

“Back then it was pretty common for a lot of kids to ride their bikes [along Slaughter Lane], so we grouped up and rode together. The biggest concern we had was crossing the train tracks—but there is an overpass there now...”



Source: Trisha Rangil, Corridor Program Office

Culture and Arts of Corridor

Similar to William Cannon Drive, Slaughter Lane is regarded by many as a utilitarian roadway that lacks an obvious arts and culture scene. As growth along this corridor continues, there are opportunities to leverage placemaking/keeping projects to celebrate the families and individuals who live, work, learn and play along this roadway.

Some of the most frequented destinations along Slaughter Lane include but are not limited to the Southpark Meadows Shopping Center along I-35, Alamo Drafthouse, Circle C Metropolitan Park and Mary Moore Searight Metropolitan Park.

Possible Stakeholders

- Nearby Neighborhood Associations
- Schools
- Churches
- Austin History Center



Artwork Opportunity

The Art in Public Places opportunities are expected to be located between Barstow and Loop 1 and Manchaca Rd and West of S. Congress.

Budget A: \$63,000 Barstow to Loop 1

Budget B: \$63,000 Manchaca Rd to West of S. Congress

The Corridor Construction Program improvements are to be located between FM 1826 and Vertex Boulevard.

Improvements include upgraded traffic signals, drainage, intersection turn lane modifications, ADA sidewalks, median islands and bus stop improvements.

Identified artwork opportunities are located in the following 2 areas.

1. Mary Moore Searight Dr.
2. Randt Rd.

For more information about the Corridor Construction Program project: www.austintexas.gov/SlaughterLane