

# Master Plan for John Treviño Jr. Metropolitan Park at Morrison Ranch

## Design Commission Meeting

Charles Mabry, Associate Project Manager, PARD  
David Malda, Principal, GGN

July 17, 2020



**GGN**

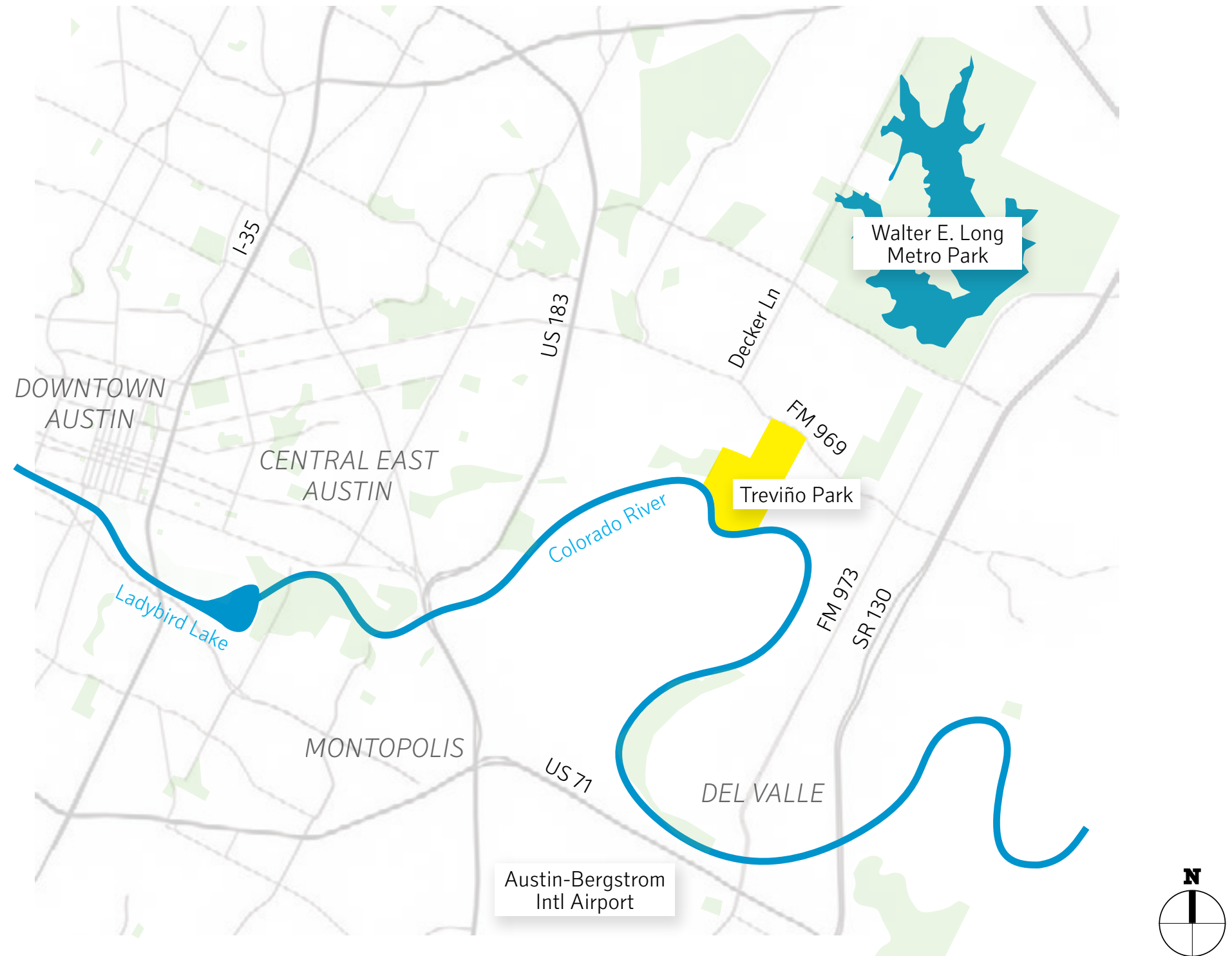


# Park Context

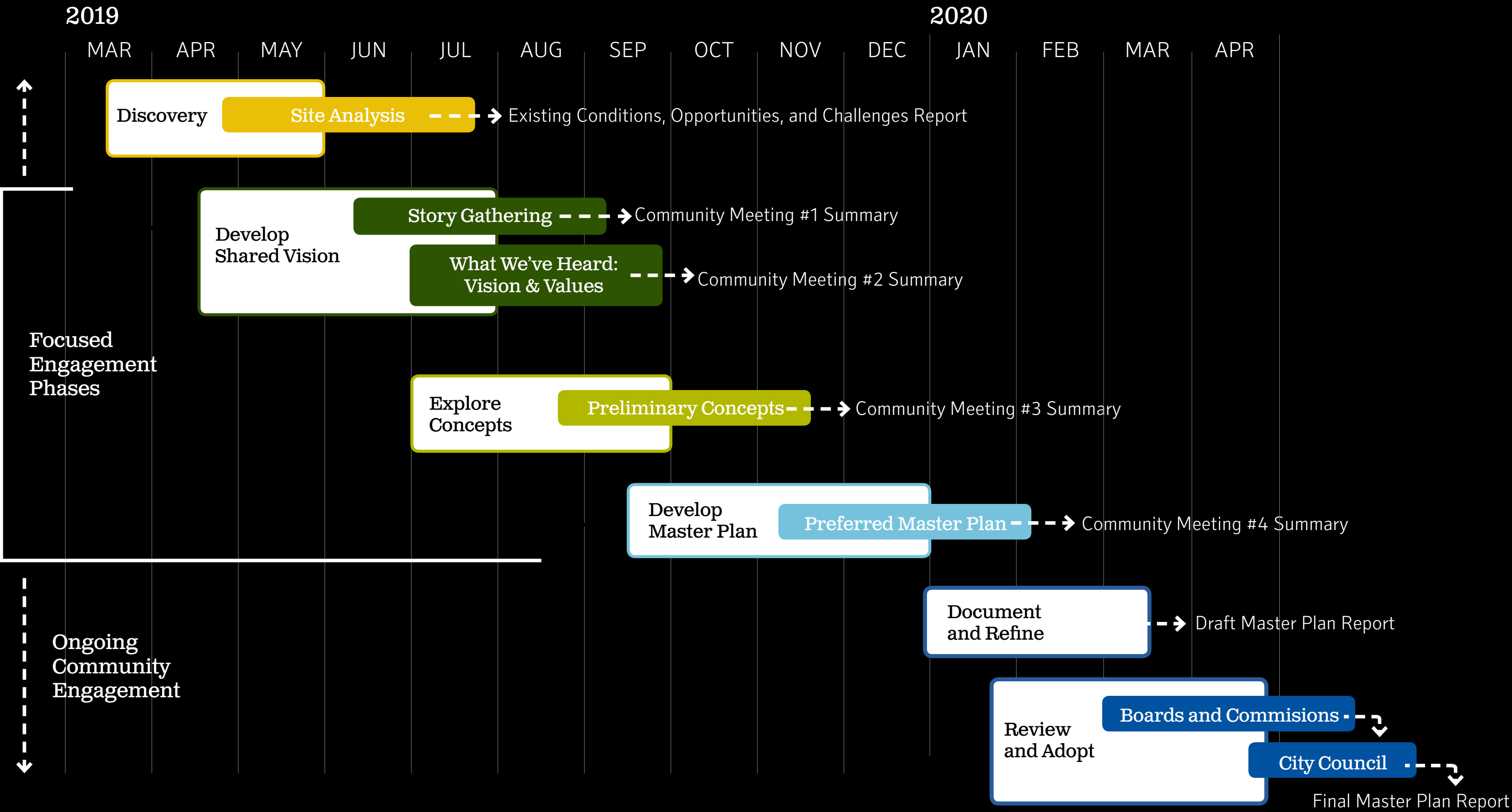
- 2003: Purchased by PARD
- 2006: Named after John Treviño Jr., former Council Member and Mayor Pro Tem
- 330 acres of former ranch
- 5,000 feet of Colorado River frontage
- 2/3 of the site lies in the 100-year floodplain
- Located at 9501 FM-969 between US-183 and TX-130



John Treviño Jr. at City of Austin park dedication in 2016 (Image credit: BetoATX)



# Master Plan Schedule





# Public Engagement: Approach

## Meetings and Events

- 4 community meetings (two on-site at Treviño Park)
- 11 Small Group Discussions
- 3 Technical Advisory Group (TAG) Meetings

## Surveys

- 3 community surveys (digital and print in English and Spanish)

## Individual outreach

- Engagement with individuals, 16+ organizations, 3 neighborhood associations, and 5 local schools
- In-person outreach in East Austin: 3 school events, 5 neighborhood/organization events, and 5 church services



July 8 community meeting nature talk + hike



December 7 community meeting with organization partners



# Public Engagement: Listening

## 1) Site, parks, and your story

- Connection to place
- Notes & postcards
- Oral histories
- Survey: 398 respondents (41% responses from neighboring zip codes\*)

## 2) What we heard

- Park Vision and Values
- Opportunity to share feedback to date and confirm understanding of community goals

## 3) An ideal day at Treviño Park

- Site character, activities, design concepts
- Survey: 222 respondents (33% responses from neighboring zip codes\*)

## 4) Early phase priorities

- How does the park grow?
- Community building with potential partner organizations
- Inauguration of Community's Walk
- Survey: 428 respondents (31% responses from neighboring zip codes\*)

## Community Priorities:

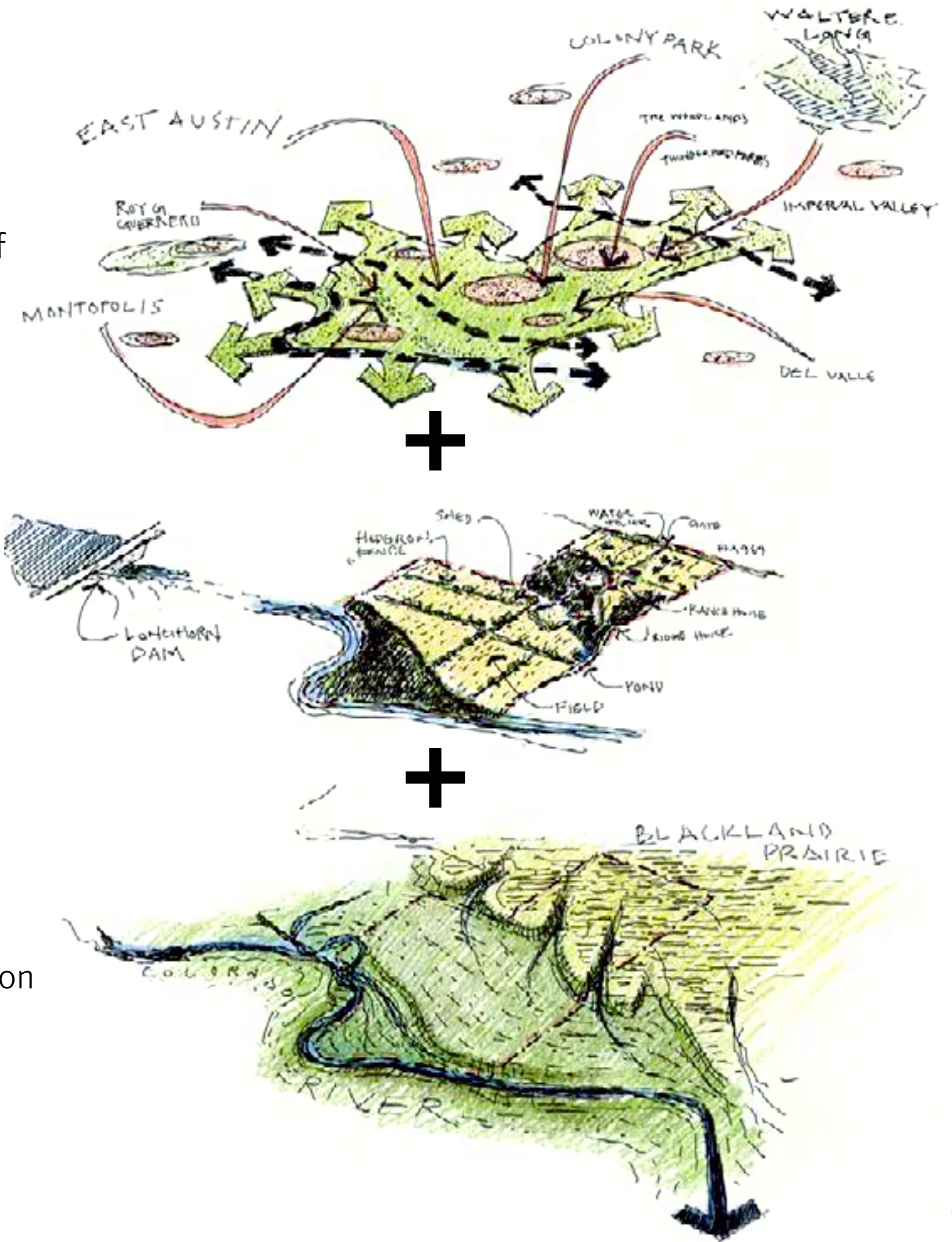


\* Neighboring zip codes to the park: 78721, 78724, 78725

## Three Primary Values

what  
we've  
heard

- 1 Advance Community through the Legacy of John Treviño Jr.
- 2 Adapt the Heritage of the Site
- 3 Engage the Intersection of Prairie and River





# Overall Master Plan





# The Field





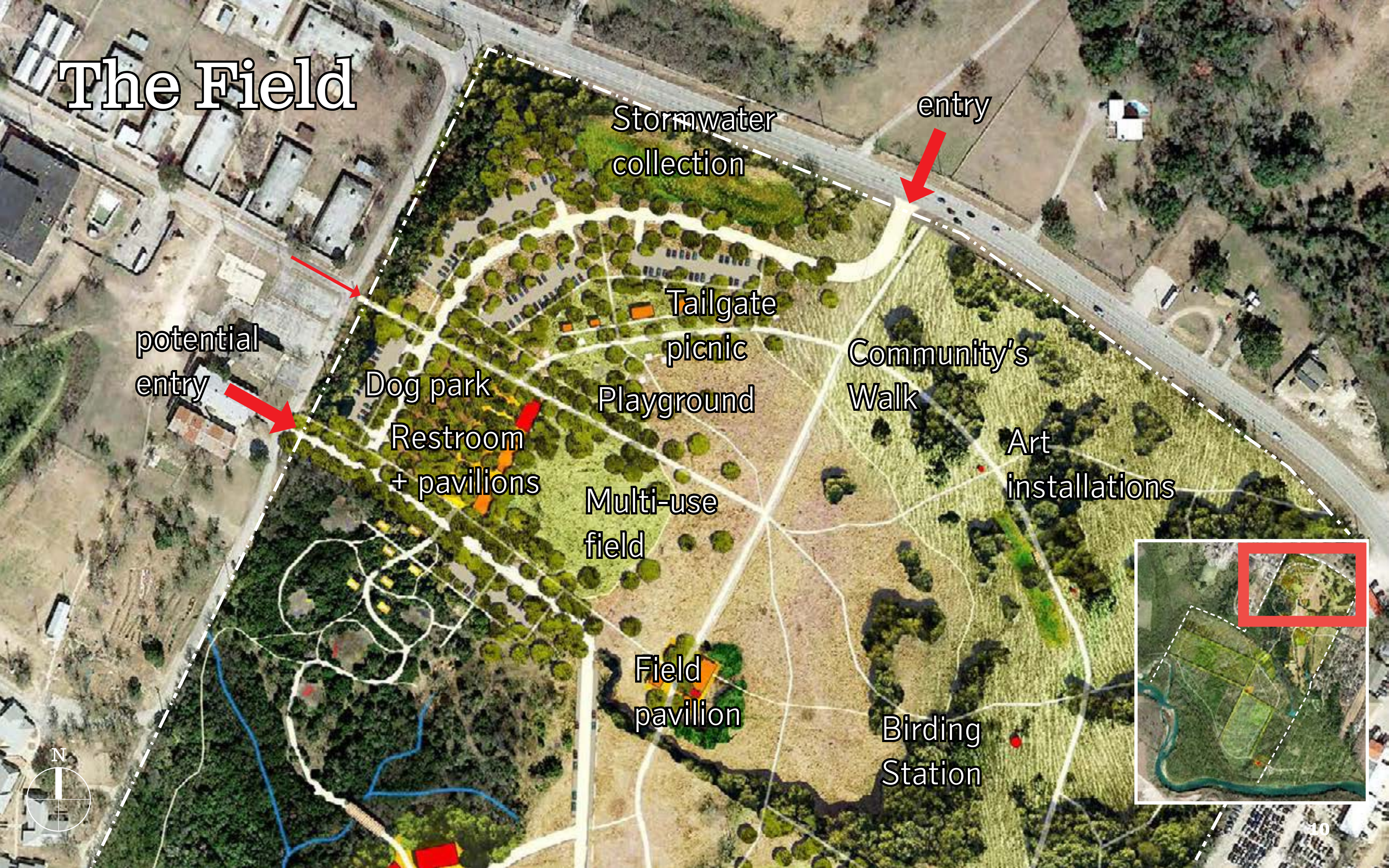
# The Field: Wildflower Meadow + Picnic



- 1 post oak restoration
- 2 wildflower meadow
- 3 field pavilion
- 4 Community's Walk
- 5 barn + water tower
- 6 multi-use field
- 7 tailgate picnic pavilion



# The Field



Stormwater  
collection

entry

potential  
entry

Dog park

Restroom  
+ pavilions

Tailgate  
picnic  
Playground

Community's  
Walk

Art  
installations

Multi-use  
field

Field  
pavillion

Birding  
Station



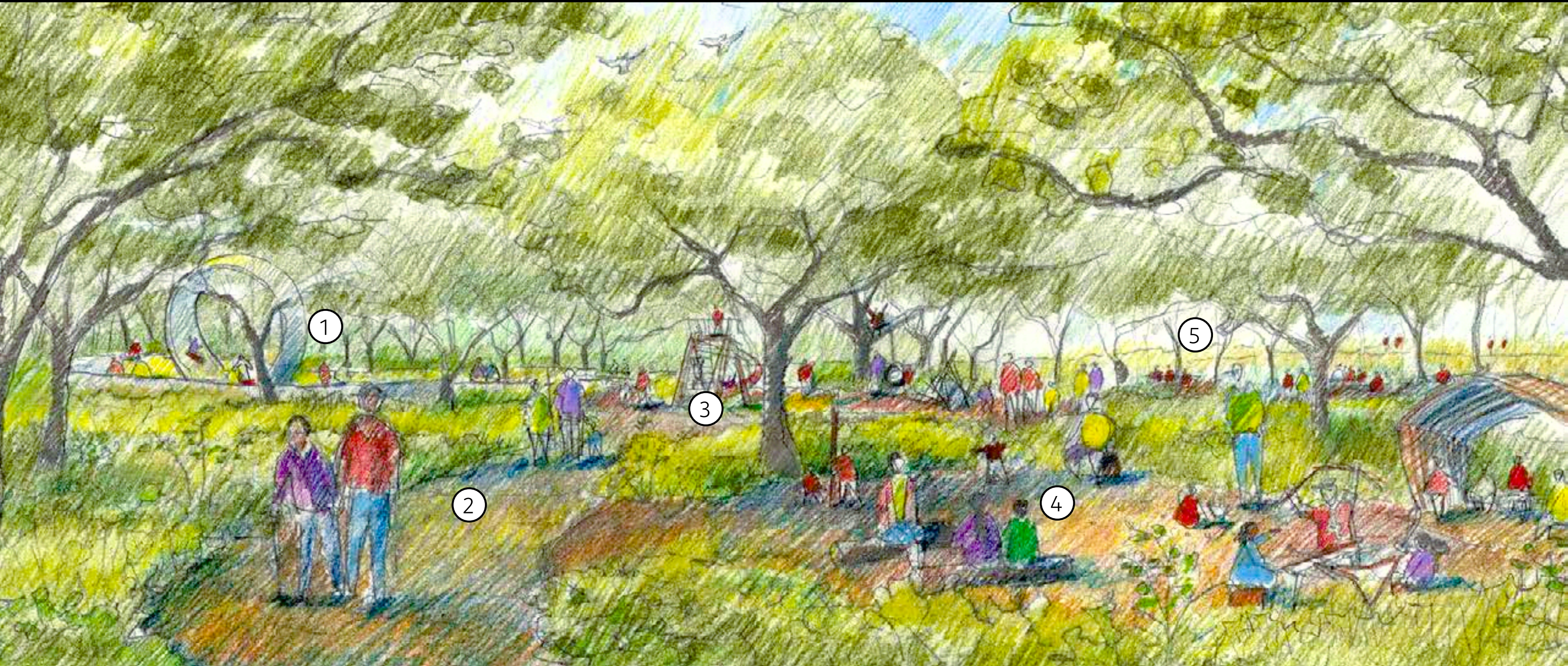


# The Ravine





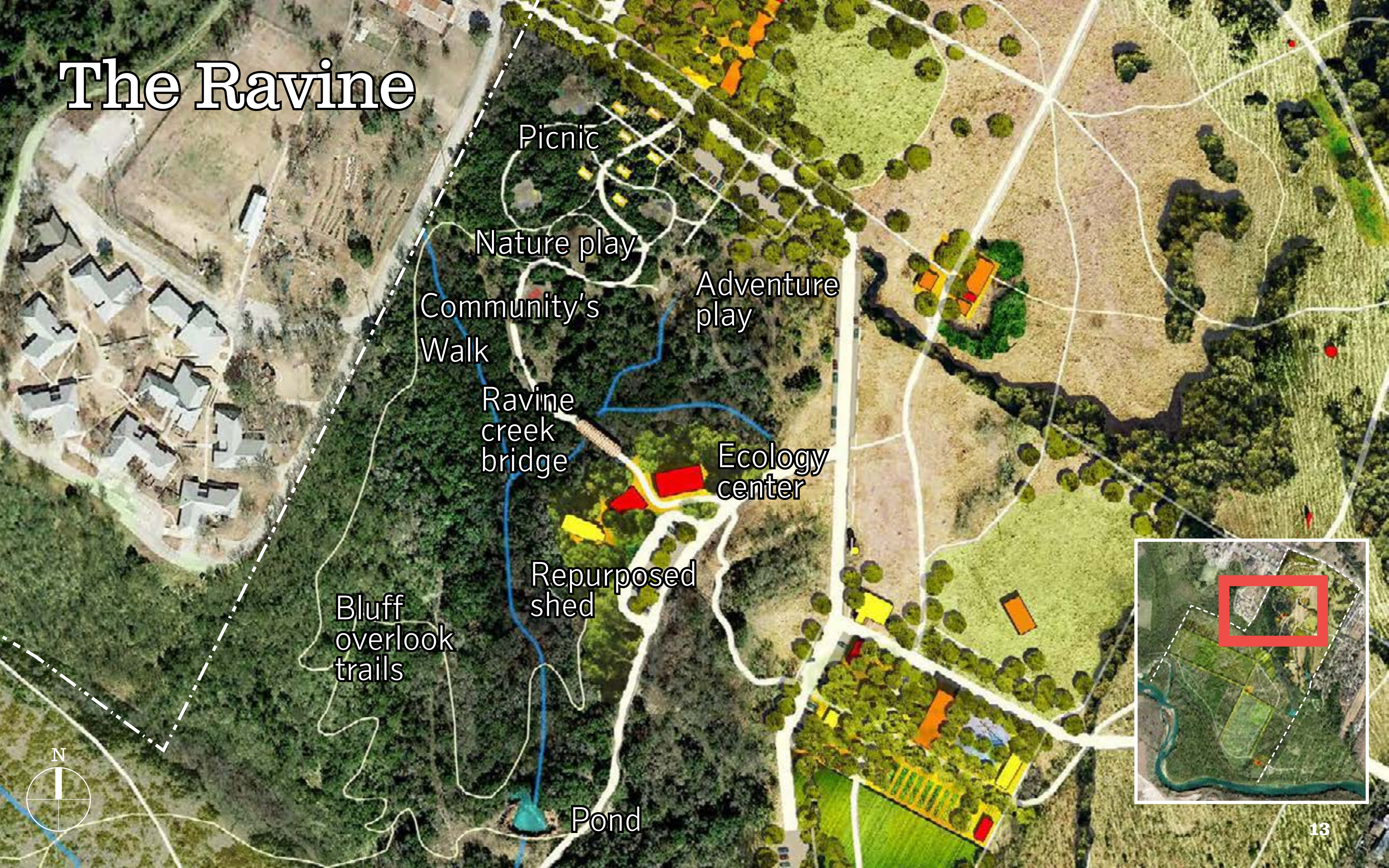
# The Ravine: Forest Trails + Nature Play



① adventure play   ② Community's Walk   ③ nature play   ④ environmental education   ⑤ picnic area



# The Ravine



Picnic

Nature play

Adventure  
play

Community's  
Walk

Ravine  
creek  
bridge

Ecology  
center

Repurposed  
shed

Bluff  
overlook  
trails

Pond





# The Farm





# The Farm: Community Resource + Gathering



① food garden

② demonstration garden

③ mobile pop-up event spaces

④ central pavilion gathering space

⑤ playground and splash pad



# The Farm



Water  
tower

Existing  
barn

Event  
field

Stage  
pavilion

Café  
concession

Central pavilion

Play +  
splash pad

Demonstration  
garden

Agriculture  
+ food  
garden





# Home





# Home

Drop-off

Bluff House

Bluff  
overlook  
trail

Paths +  
picnic

Picnic  
shelter

Pond





# A Community's Walk

As a living legacy of John Treviño Jr., an accessible one-mile loop unites many of the park's primary spaces and varied ecologies. It is an opportunity for art, discovery, and community to grow with time.



John Treviño Jr. (Image credit: Voces Oral History Project, University of Texas at Austin School of Journalism)



Community walk along the proposed trail during





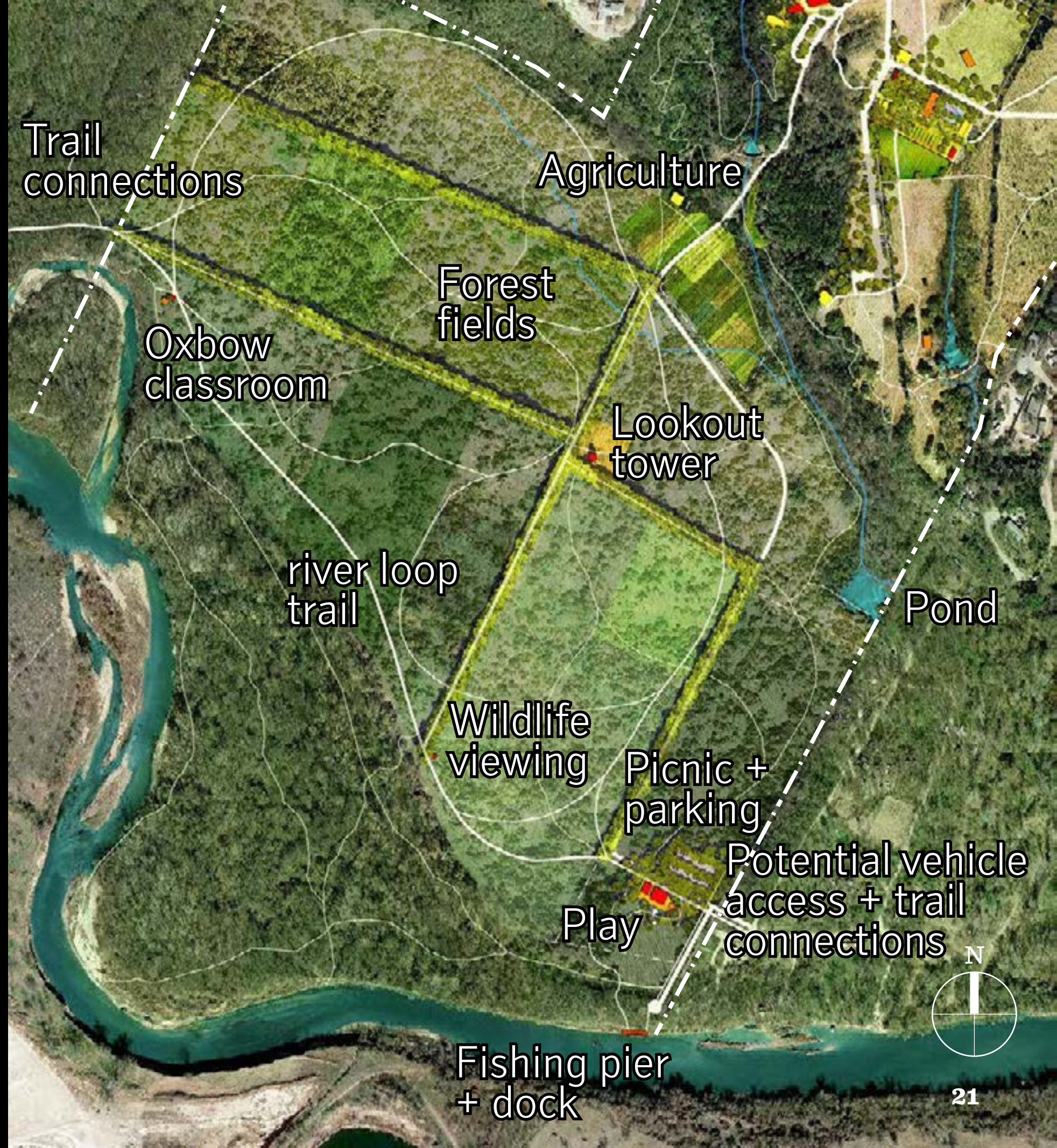
# Floodplain Level



Image credit: snapshot from ATXN aerial footage of Treviño Park

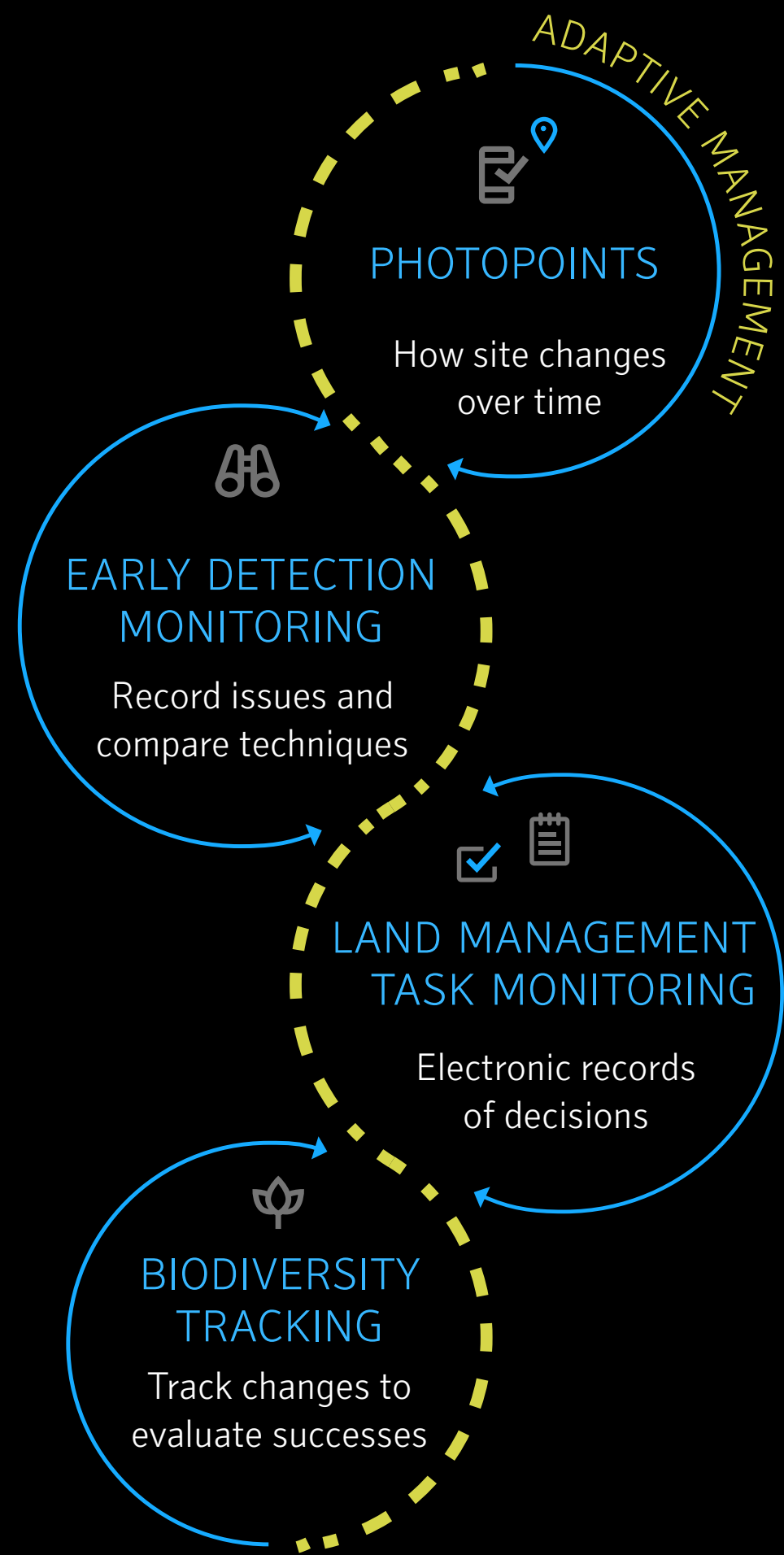


# Floodplain Forest and River





# Ecology: Adaptive Management



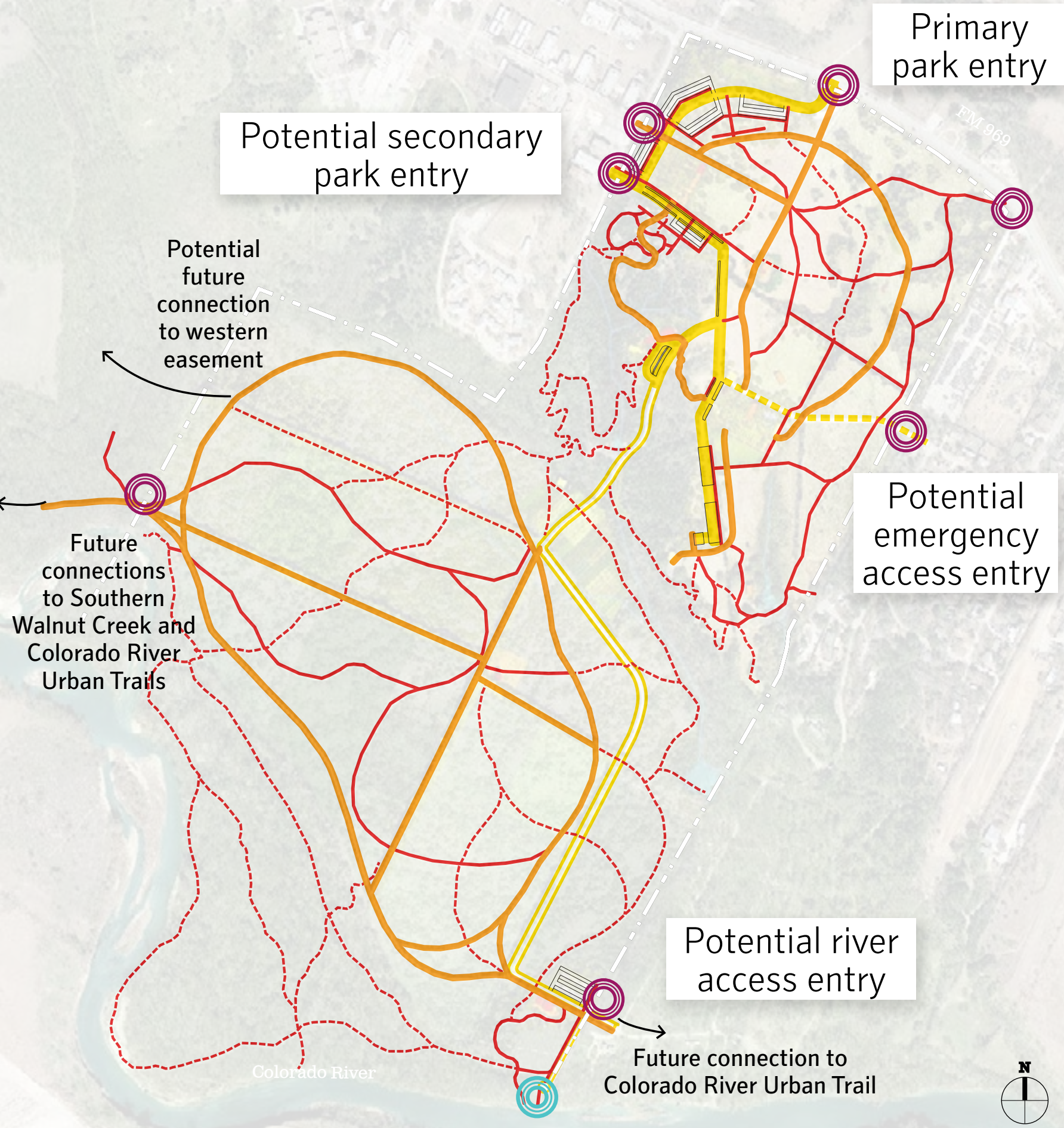


# Access: Trails and Connectivity



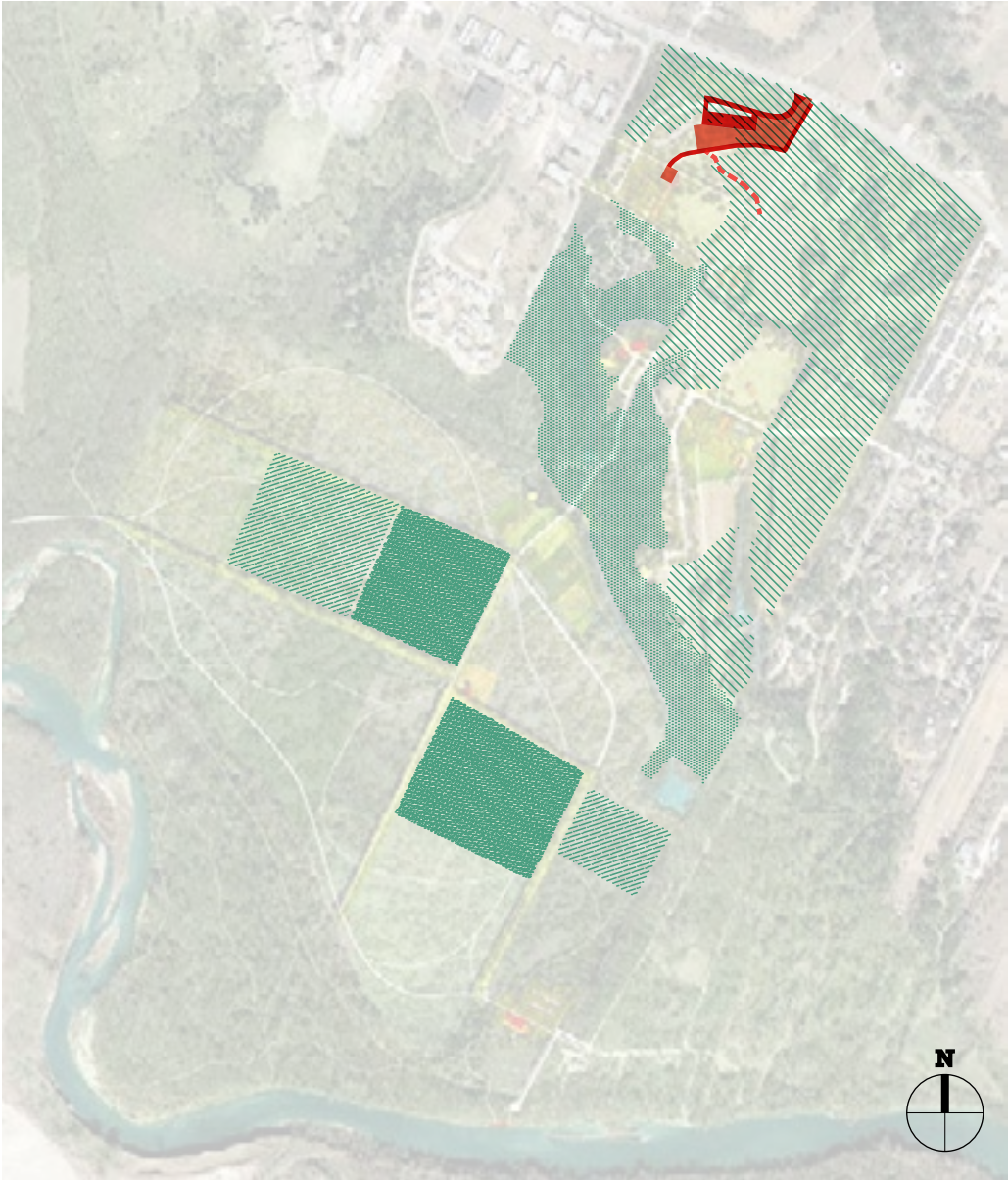
## Proposed Access

- Primary trails
- Secondary trails
- Bike or pedestrian trails
- Primary roads
- Secondary roads
- Emergency access
- Park Entries
- Boat access
- Site boundary





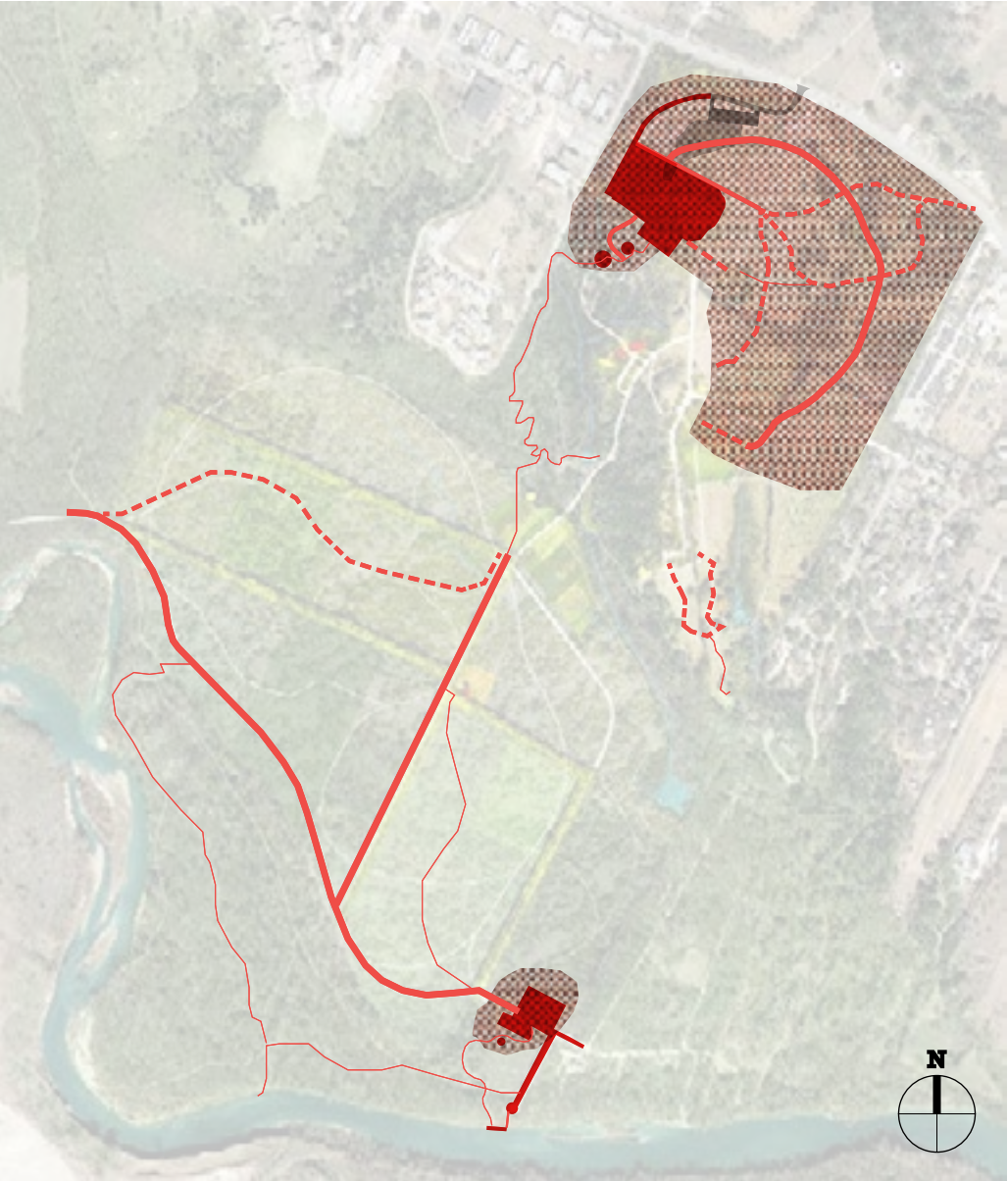
# Recommended Phasing



## Phase 1

Trailhead, tailgate, and opening the nature park: \$4.6 - \$5.5M

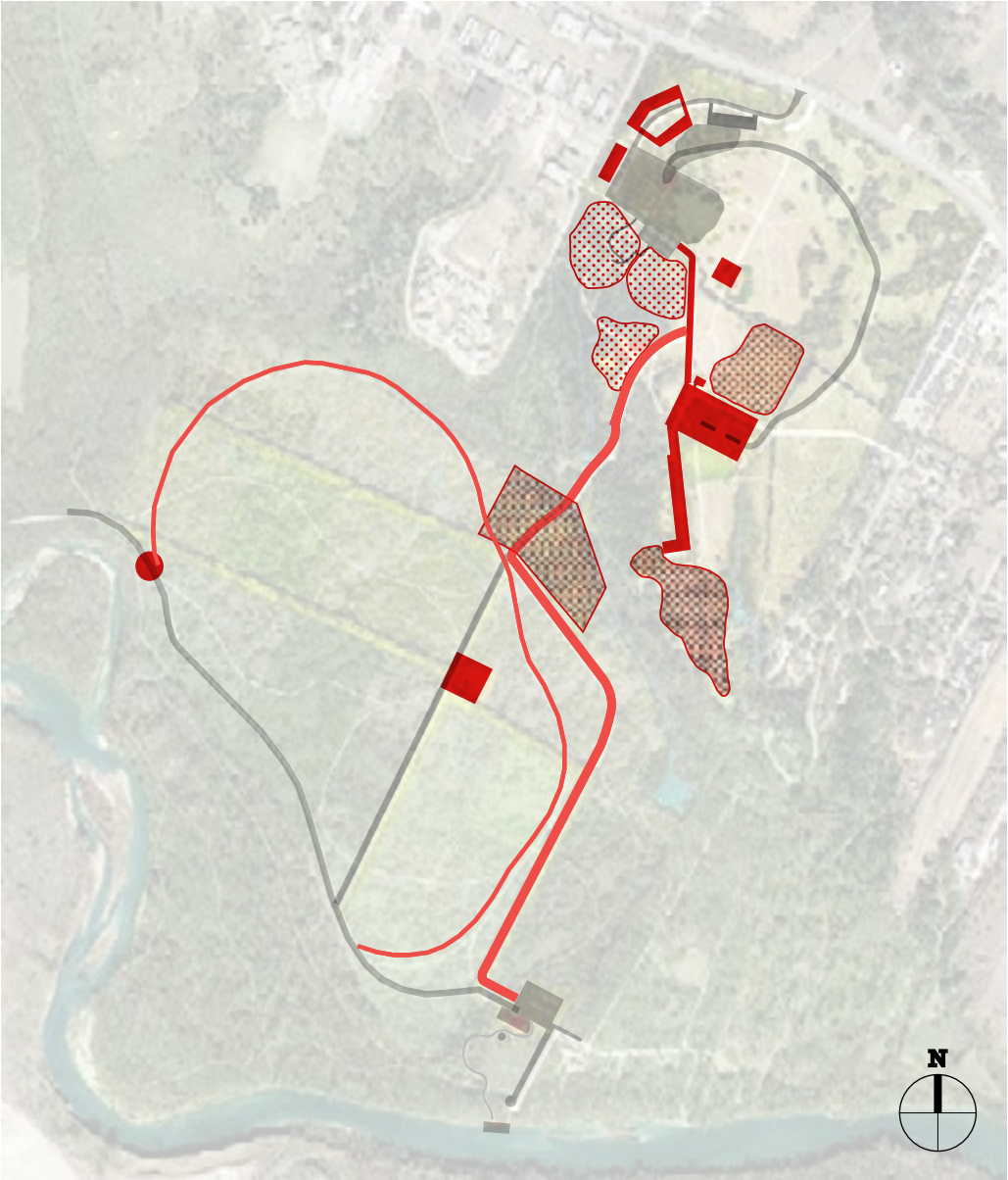
Restroom facility add-on alternate: \$1.5 - \$1.8M



## Future Phases

Upland Neighborhood Park: \$15.2 - \$17.8M

River Access: \$11.1 - \$12.9M



## Partner Projects

Grow Park Zones and Build on Partnerships





## Master Plan for John Treviño Jr. Metropolitan Park at Morrison Ranch

For more information visit:

[www.austintexas.gov/JohnTrevinoMetroPark](http://www.austintexas.gov/JohnTrevinoMetroPark)