

Zilker Metro Park Maintenance Barn Replacement

June 15, 2020

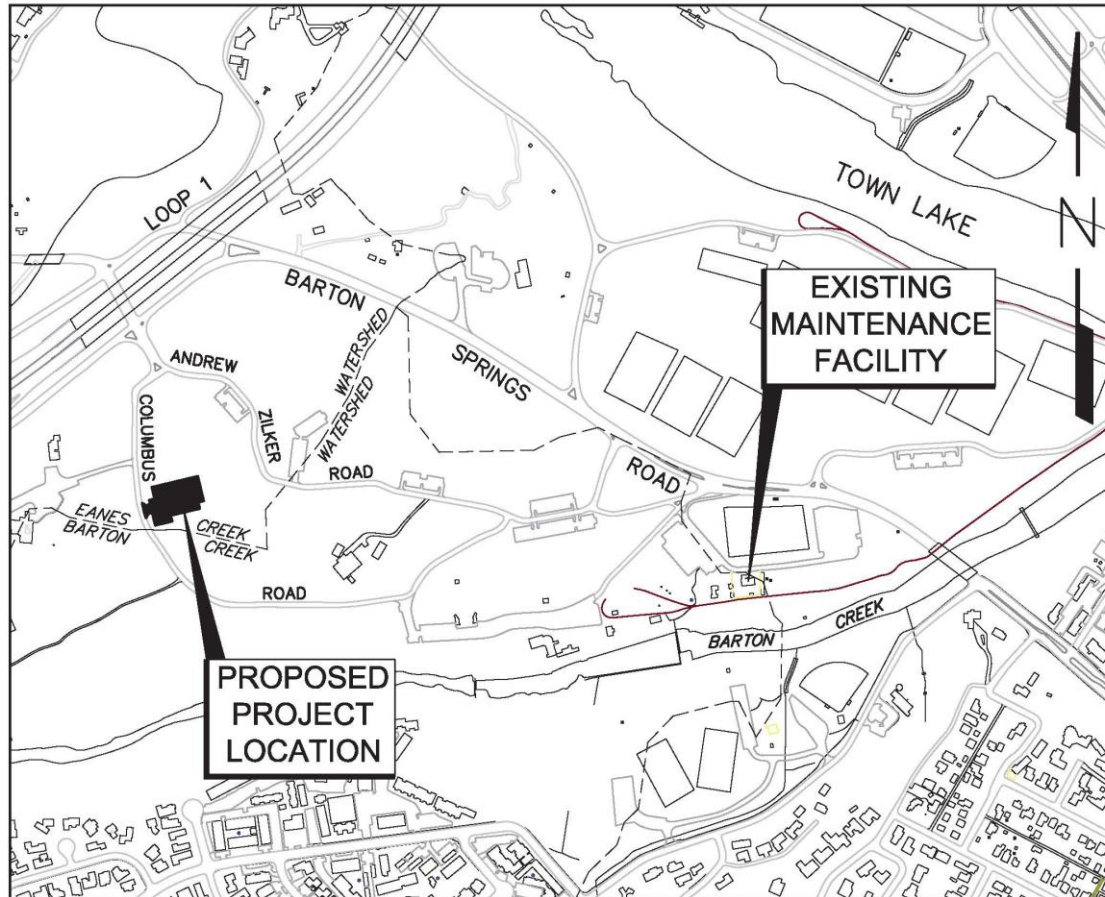


Project Description

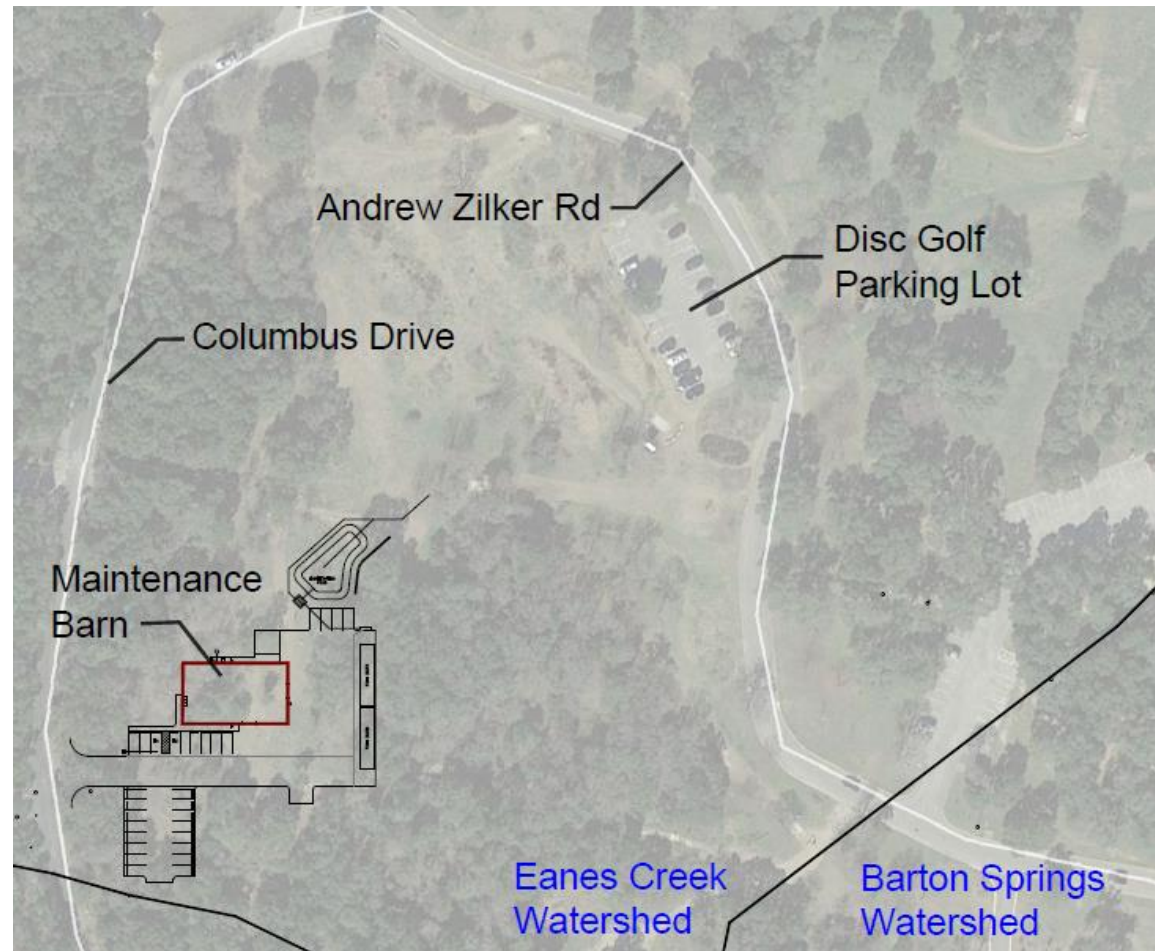
- The Parks and Recreation Department's (PARD) existing maintenance barn is undersized for Zilker Park maintenance staff's current needs. The barn is also located within the Barton Creek Watershed, very near Barton Springs Pool.
- The maintenance barn staff is responsible to maintain the entire Zilker Park including the pool, grounds and buildings.
- The new maintenance barn will be located within the Eanes Creek Watershed, in a less-trafficked area of Zilker Park and will consist of more office space, work space, and storage space.
- The building is expected to achieve LEED Silver.



Project Location

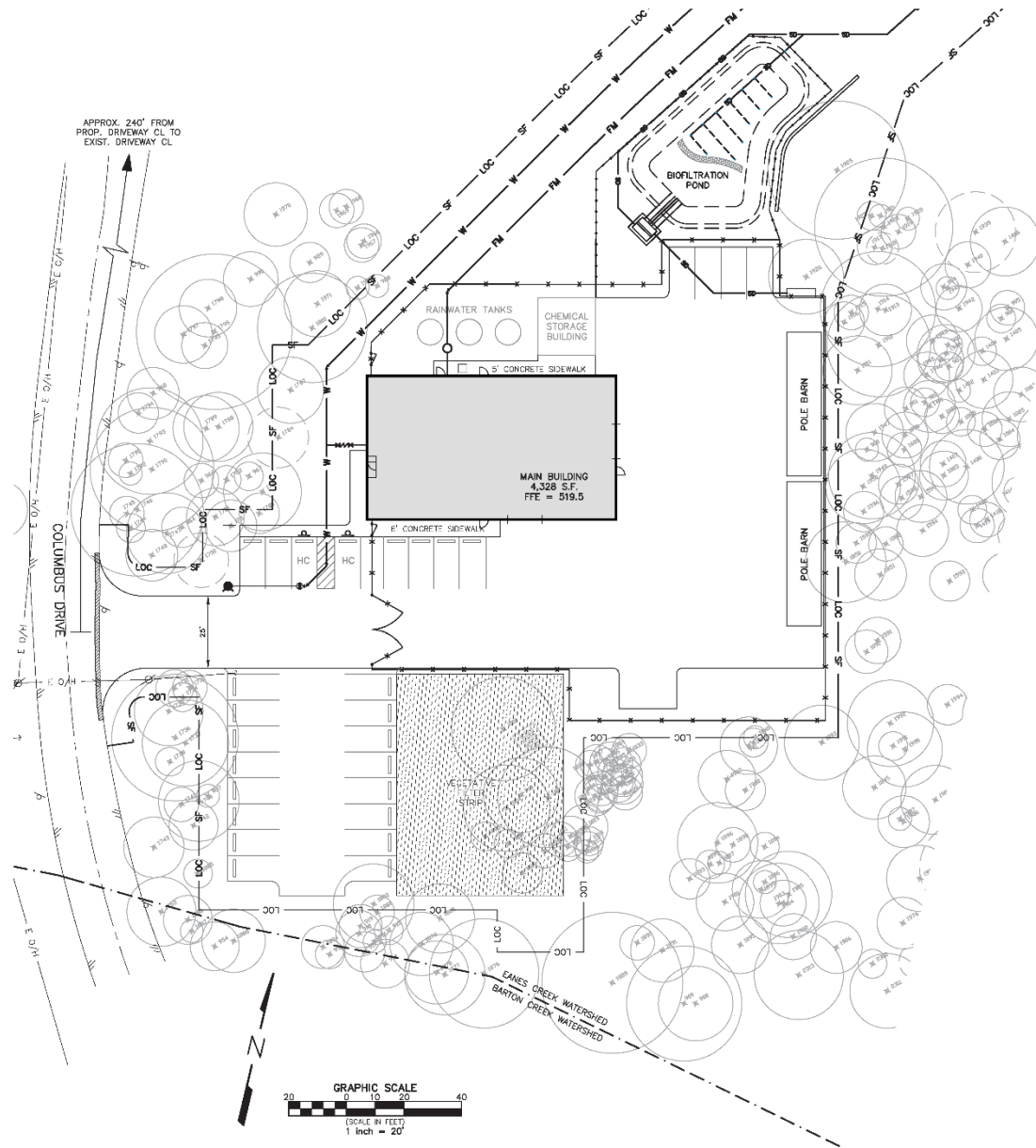


Project Location with Aerial



Site Plan

- 1,780 SF office space
- 2,548 SF maintenance bay
- 2 pole barns for storage
- Biofiltration pond for stormwater quality
- Parking for staff
- Vegetative Filter Strips
- Rainwater collection and solar power in progress



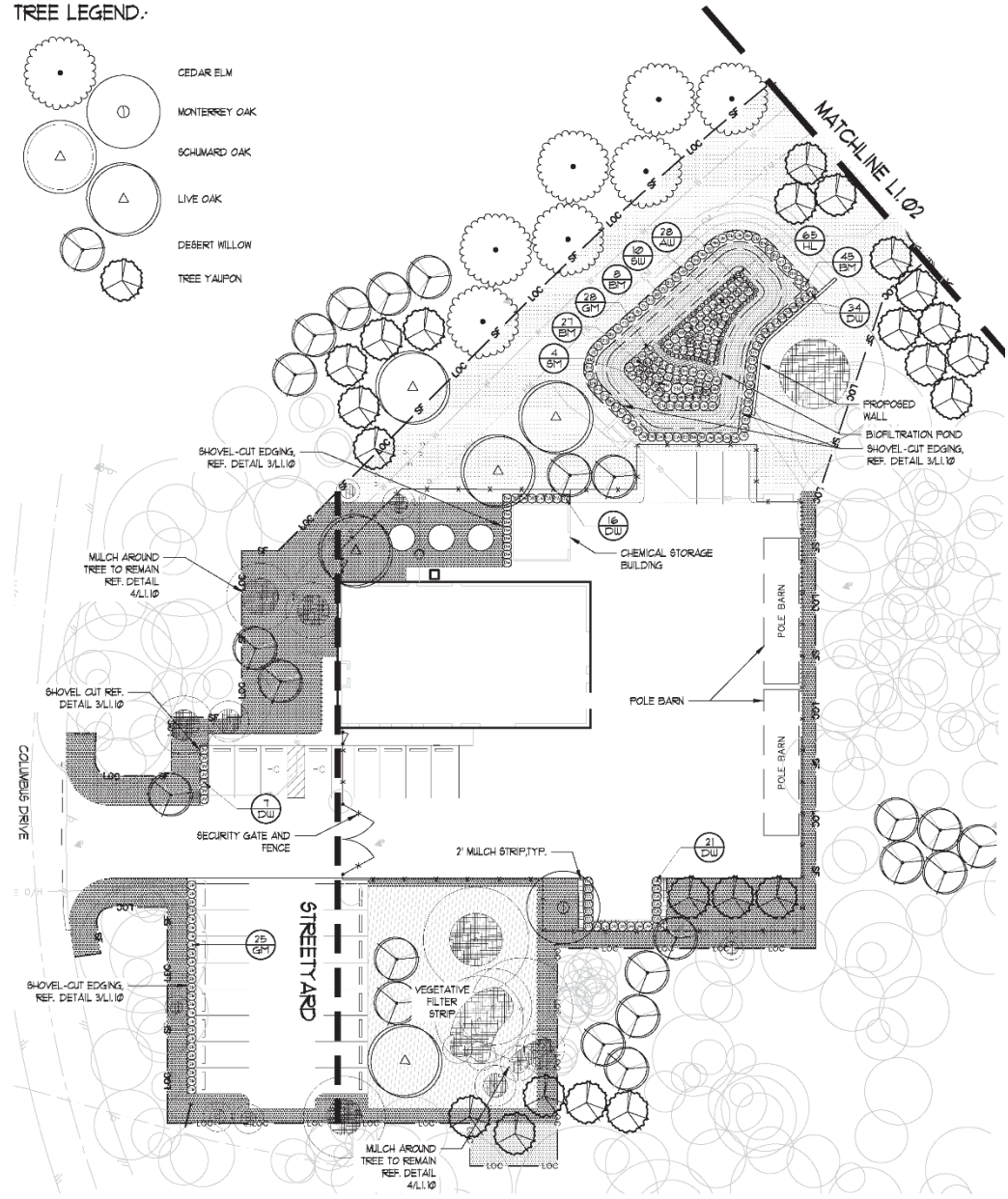
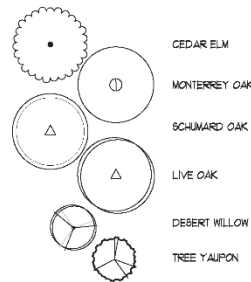
Site Views



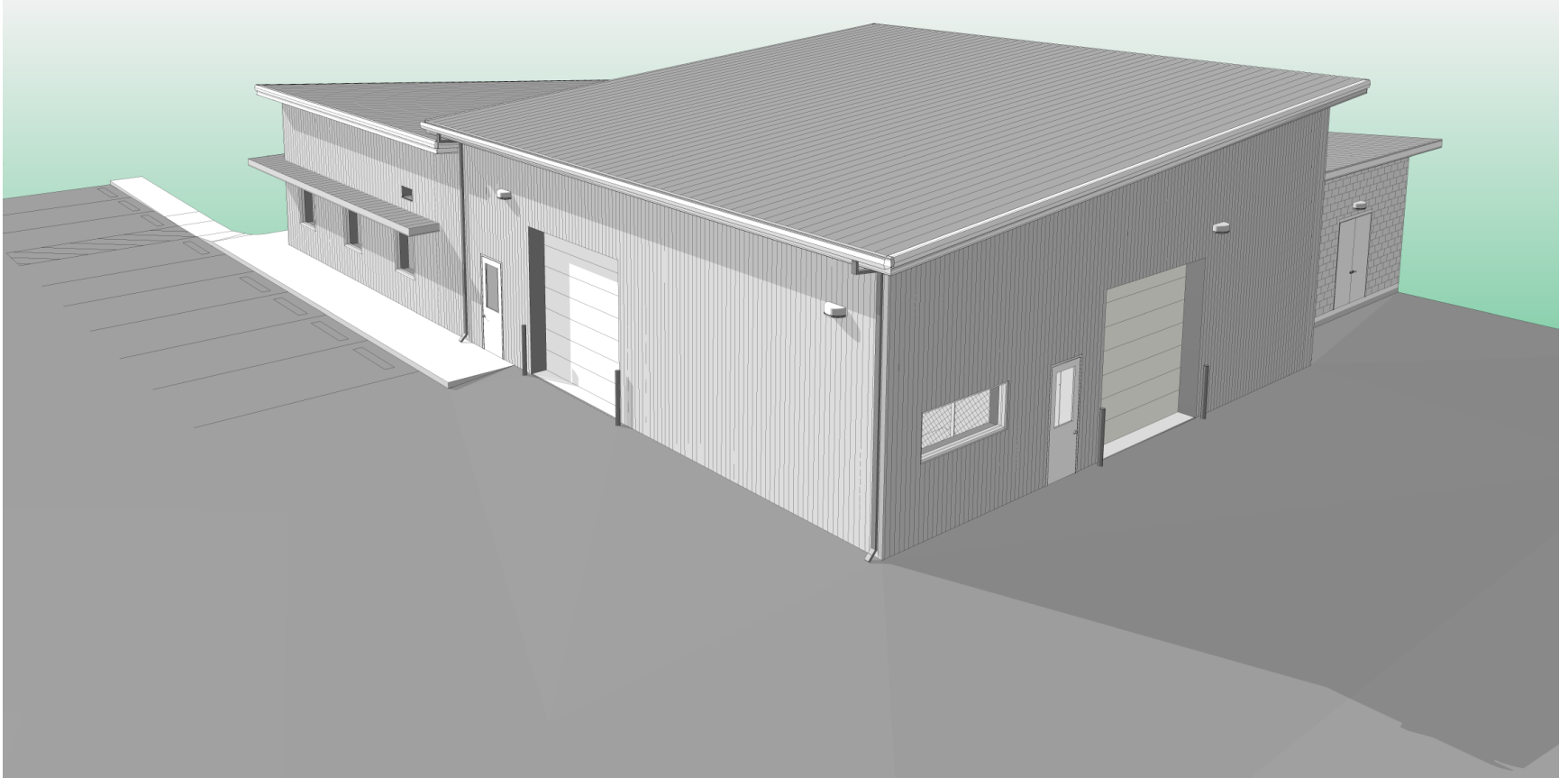
Landscaping Plan

Trees removed to accommodate the construction of the facility will be replaced at rates indicated by the Environmental Criteria Manual. No heritage trees will be removed.

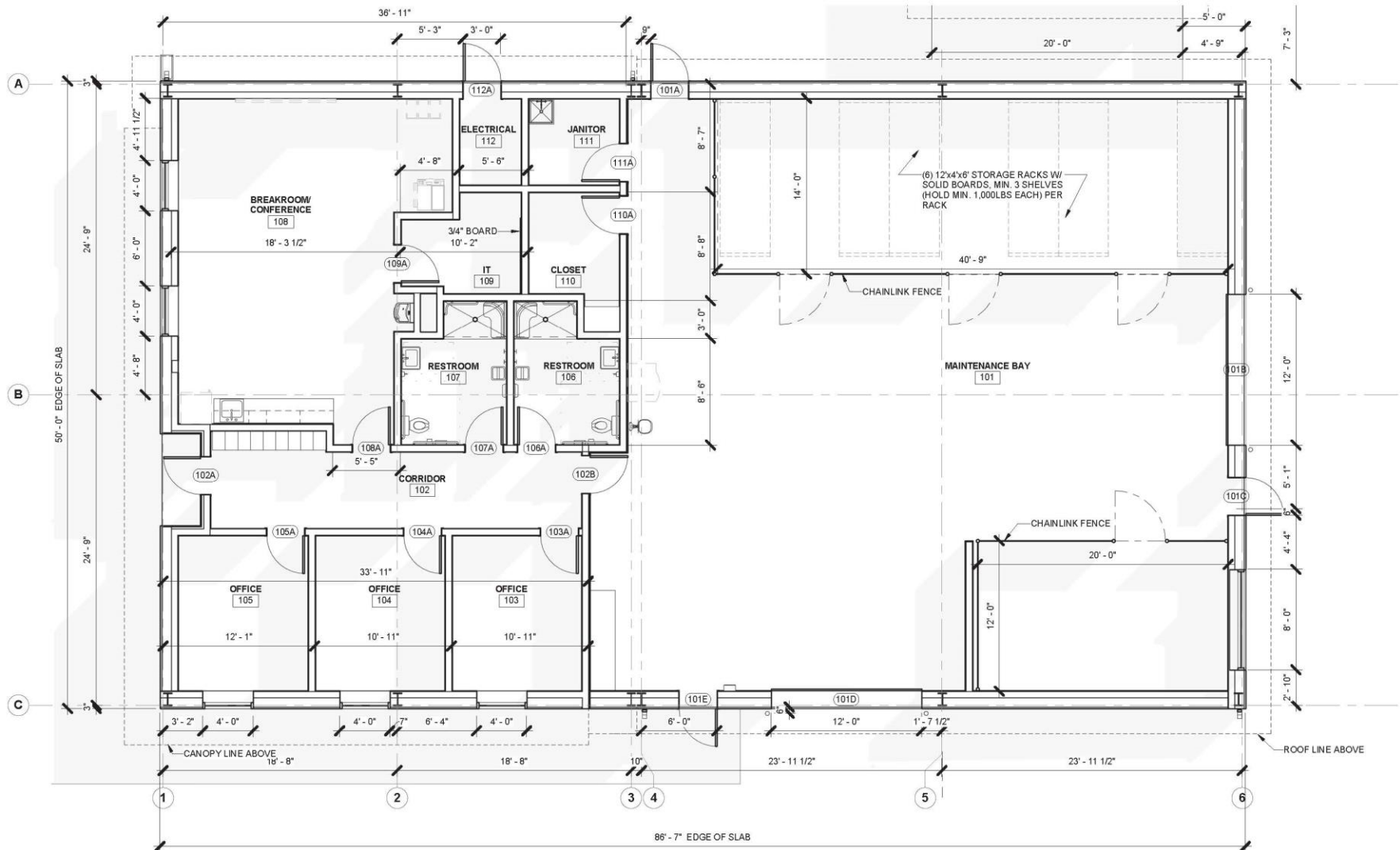
TREE LEGEND:



Building Perspective View



Building Floor Plan



Building Exterior Elevations

Pre-finished Metal
Wall Panels

Pre-finished Metal
Canopy

South
View

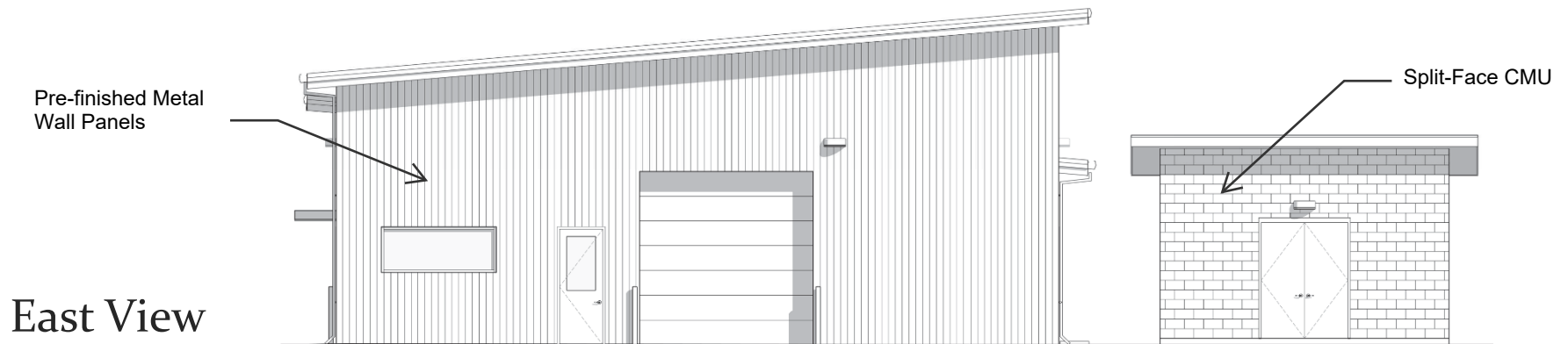
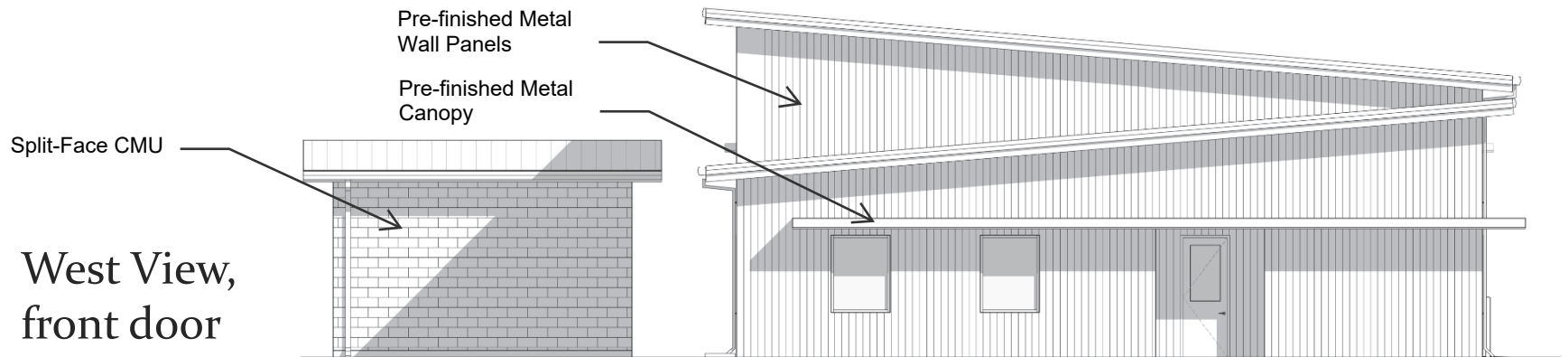


Pre-finished Metal
Wall Panels

North
View



Building Exterior Elevations



Sustainable Construction and Design

- Bicycle racks and showers for PARD staff
- Stormwater quality protected with biofiltration pond
- Electric vehicle charging station
- Native and non-invasive adapted, drought-tolerant landscaping
- High-reflectance roofing
- Using concrete as a Heat Island Reduction instead of asphalt
- Indoor and outdoor water use reduction
- Improved energy performance
- Recycling collection
- Occupant-controlled lighting
- Ample daylight in the office space
- During construction, use products with recycled content and regional sourcing
- FSC-certified wood
- Low-emitting materials, including paint, adhesives/sealants/coatings, and flooring systems
- Dark-sky compliant outdoor light fixtures
- 75% of construction waste to be recycled or salvaged

