

# SPRINGDALE GREEN

## Development Assessment

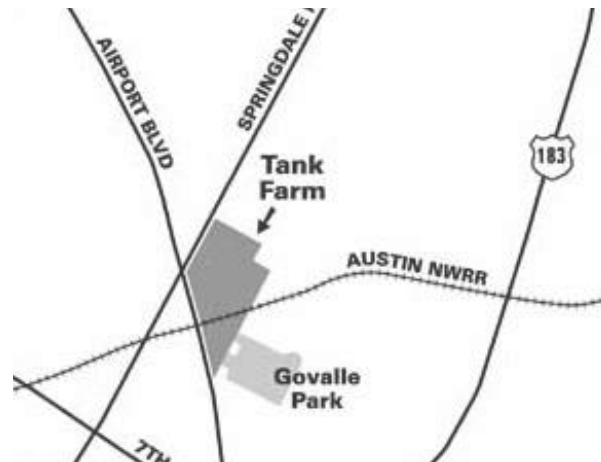
August 2020





Image U.S. Geological Survey

Imagery Date: 1/27/1995 30°15'56.06" N 97°41'



1995

2019





Aerial 1940





Aerial 1962





Aerial 1984





Tank added after  
1984 at end of  
Saucedo St.

Aerial 1987





Aerial 2006





Aerial 2019





today





site





LEED, AEGB, and SITES





## Silva Cells

Unique opportunity to create space for high-quality, uncompacted soil to allow better tree growth within paved areas

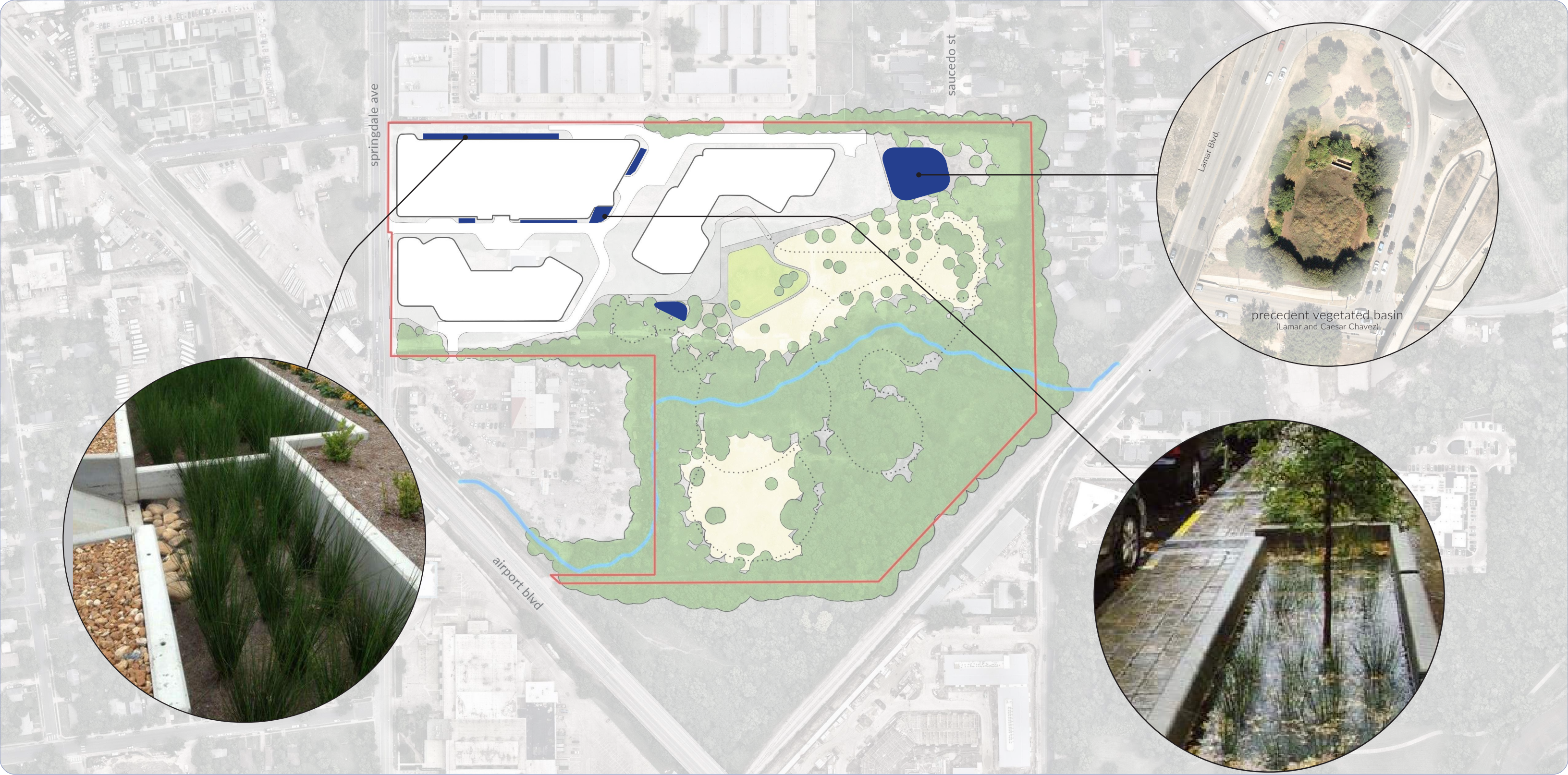




# Cisterns

capture rainwater and ac condensate for irrigation use





# Water Quality

100% Innovative Management Practices

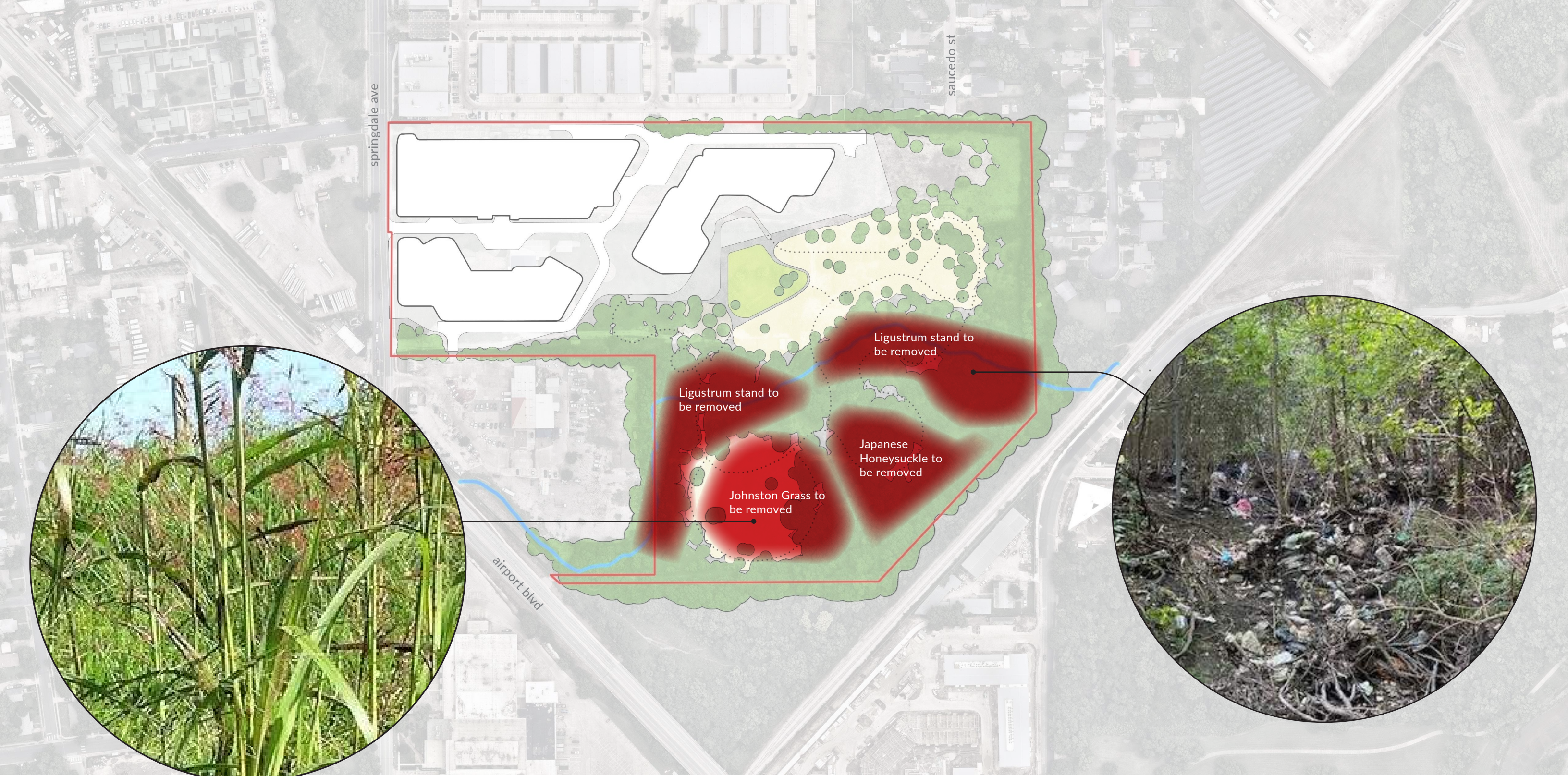




## Remove Impervious Cover

removal of remnant impervious cover in conjunction with creek channel restoration

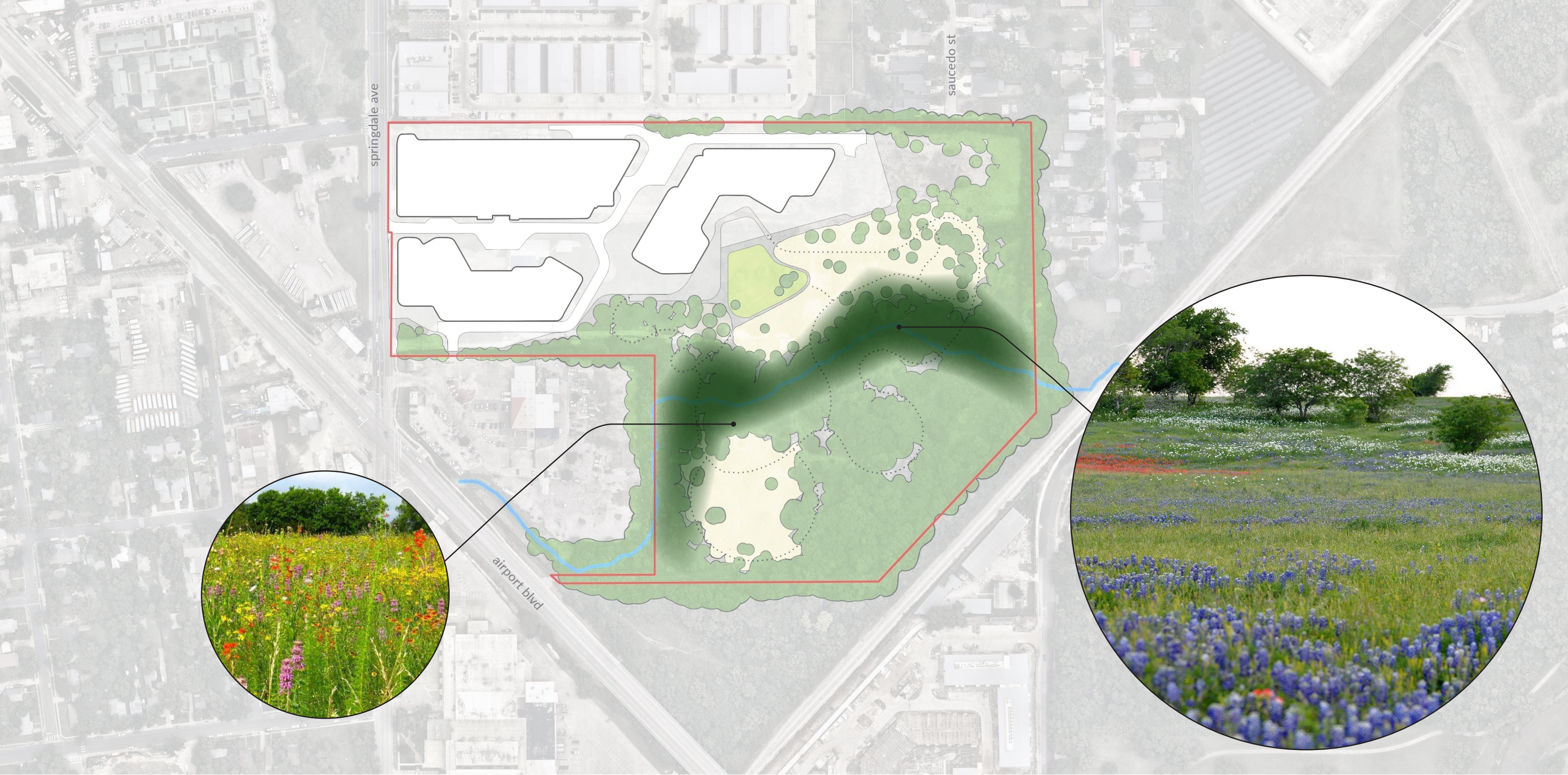




## Invasive Species Management

eliminate and manage invasive species to restore biodiversity of site





# Restoration Goals

targeting improvement of active channel health from poor to good per  
Appendix X scoring