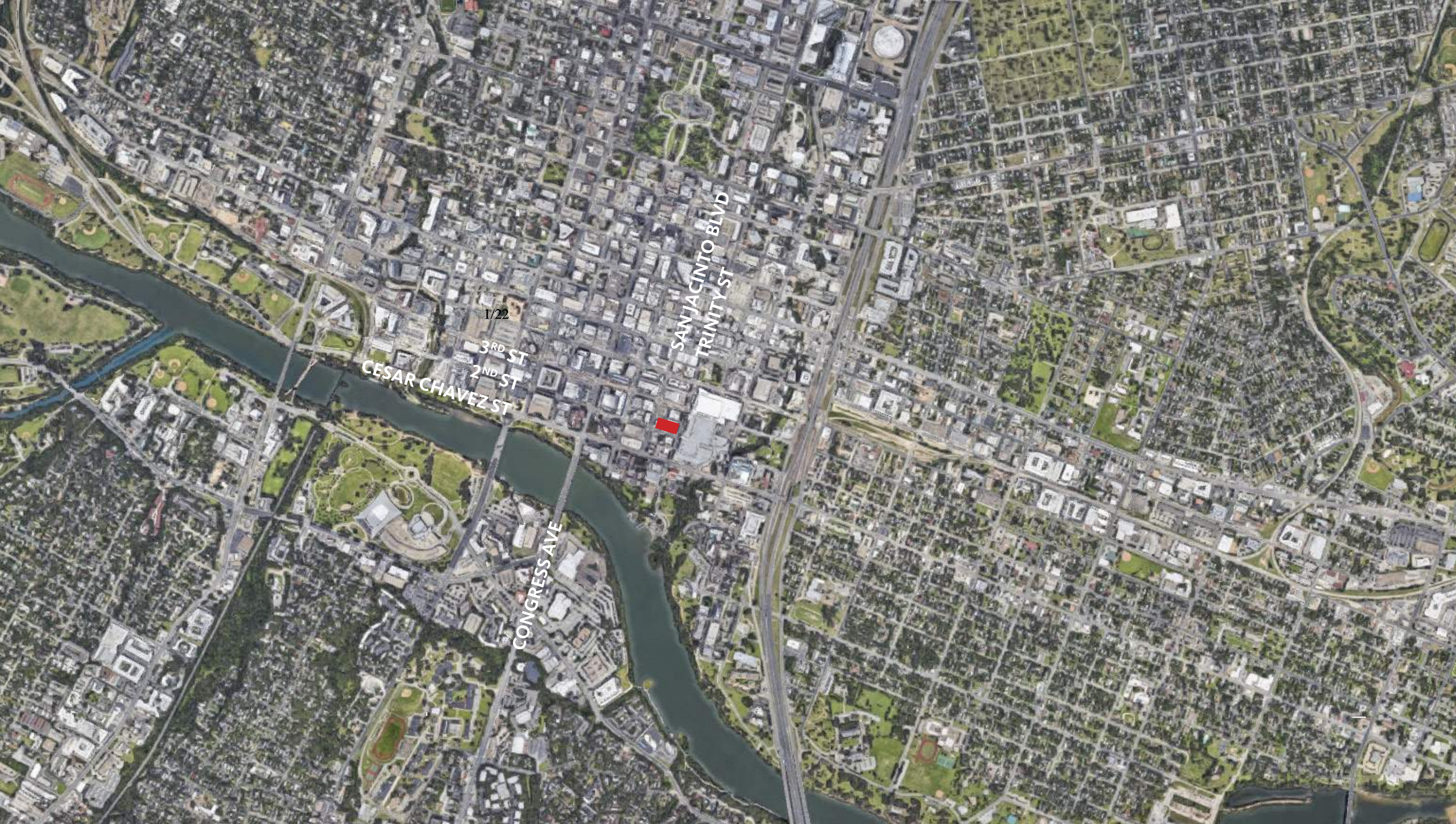
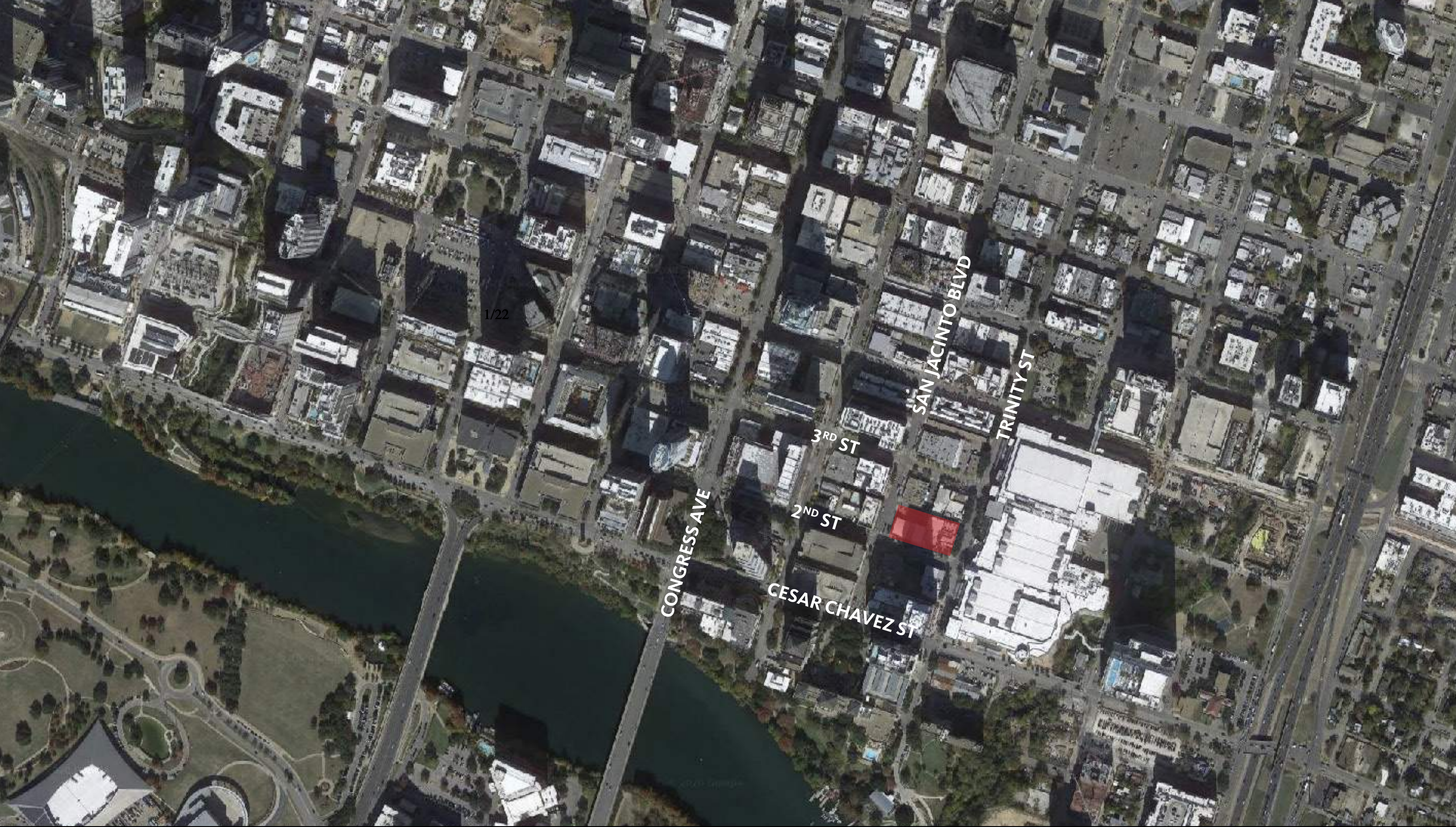
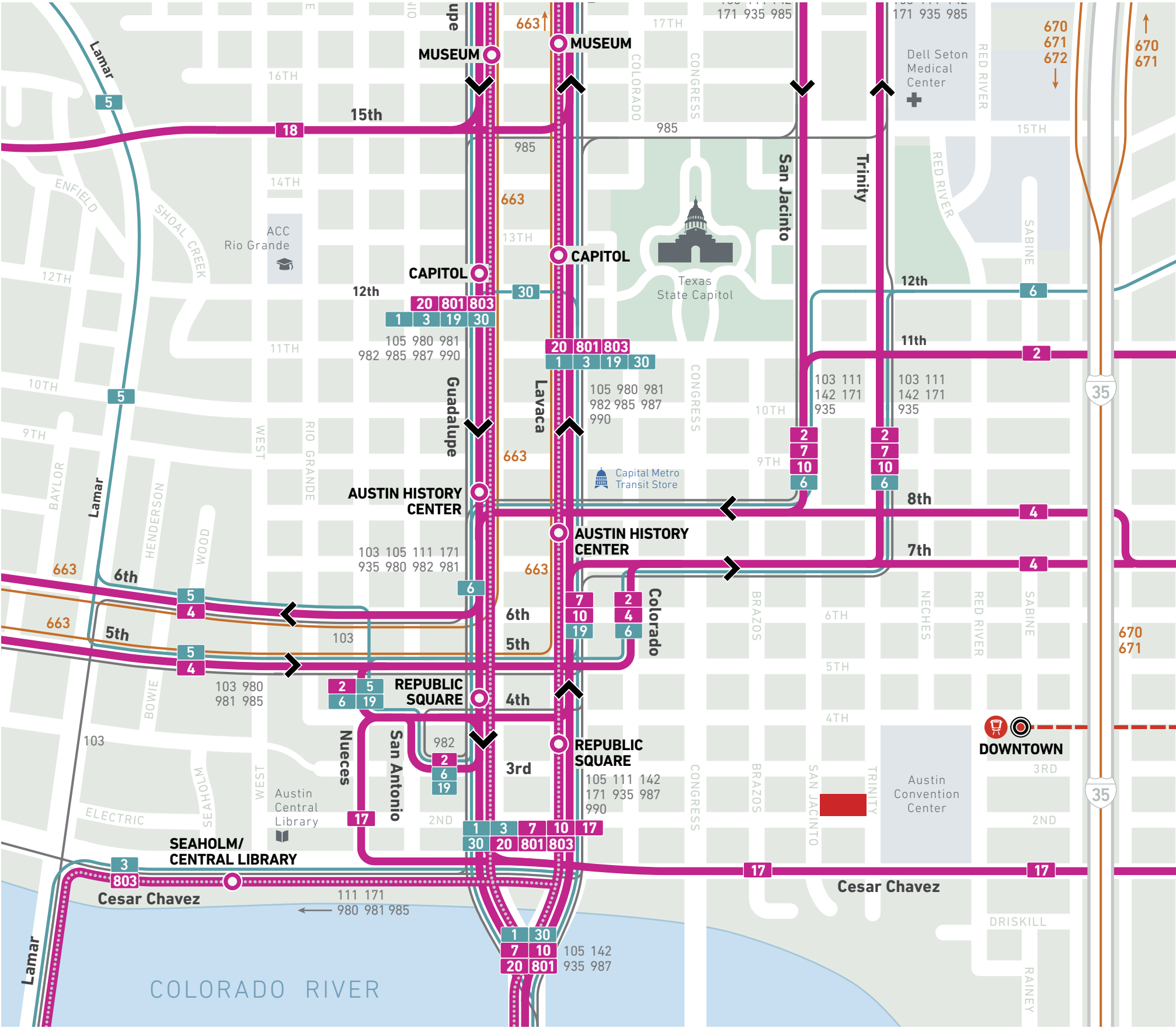


BLOCK 16

DESIGN COMMISSION PACKAGE | 08/24/20


















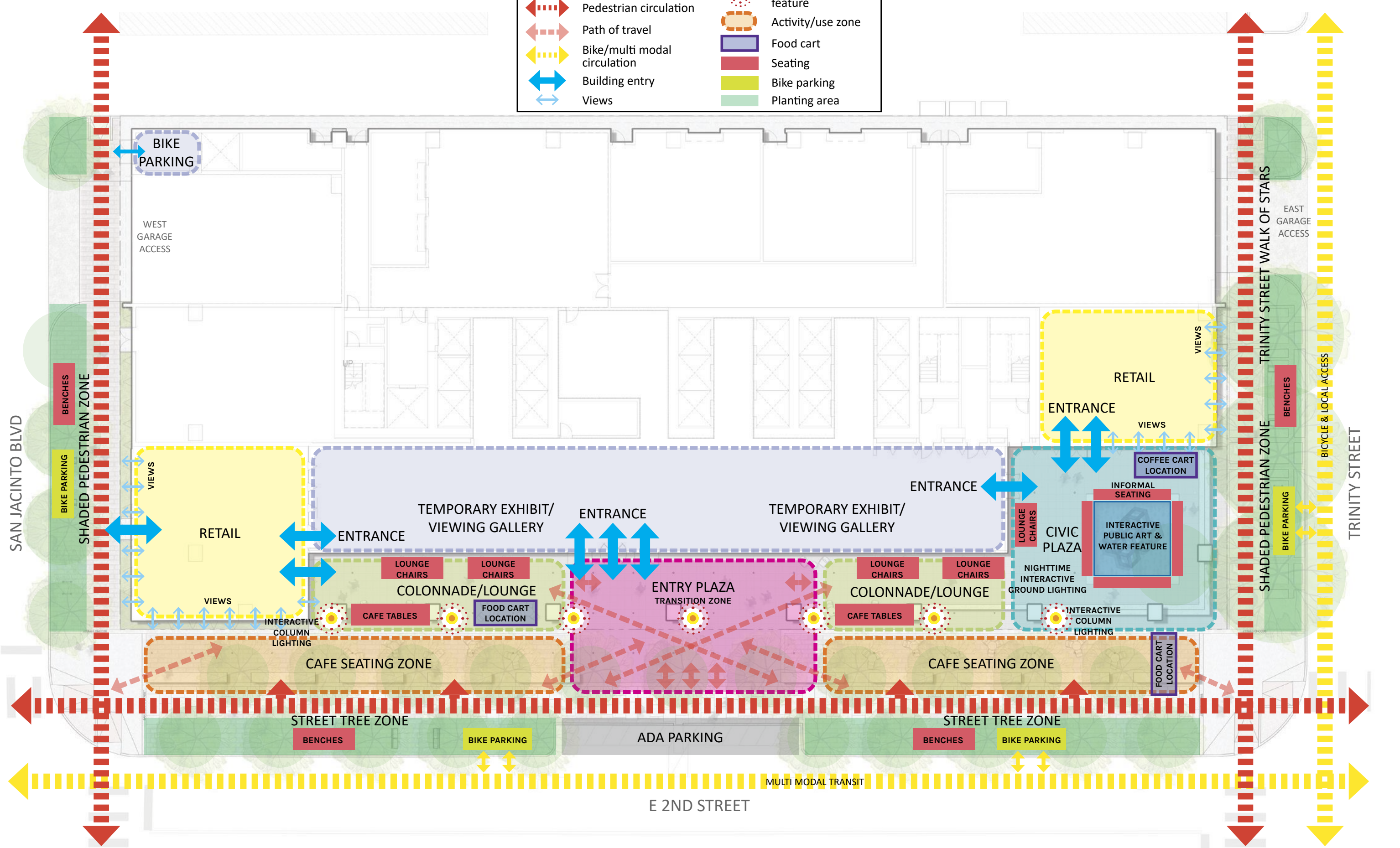


GROUND LEVEL FLOOR PLAN

LEGEND

 Pedestrian circulation
  Path of travel
  Bike/multi modal circulation
  Building entry
  Views

 Interactive lighting feature
  Activity/use zone
  Food cart
  Seating
  Bike parking
  Planting area



In-ground light

Architectural soffit & in-ground lighting

Tree lighting

Column light

Street light

Step lighting

Bench lighting

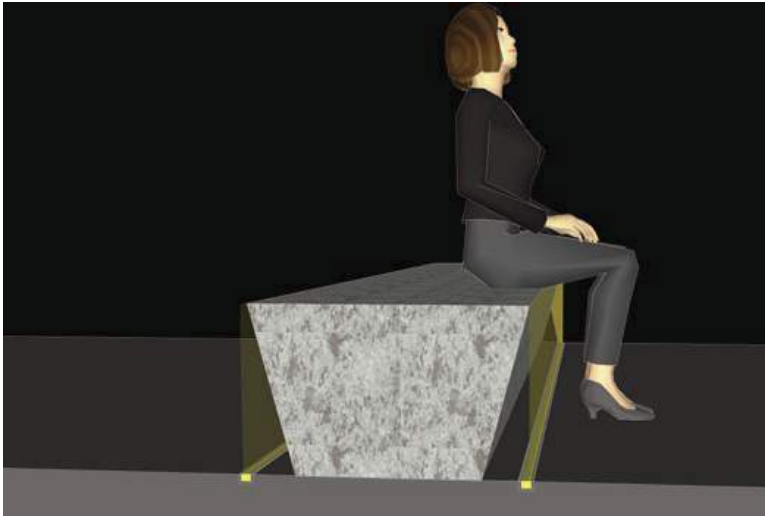
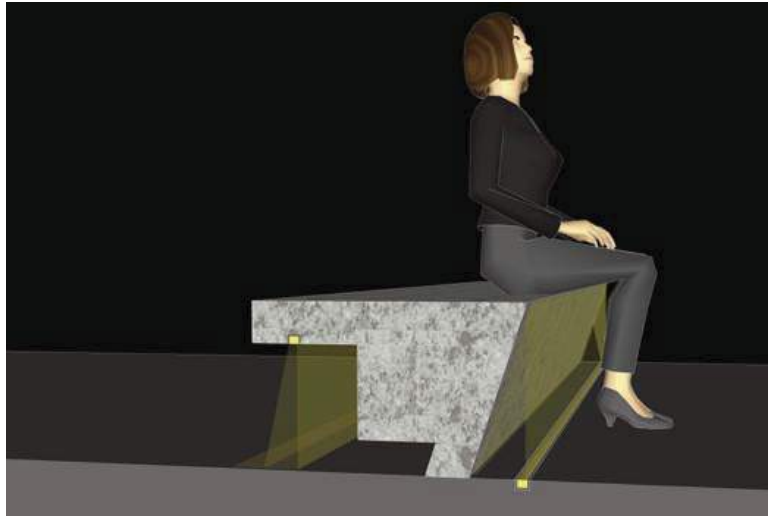
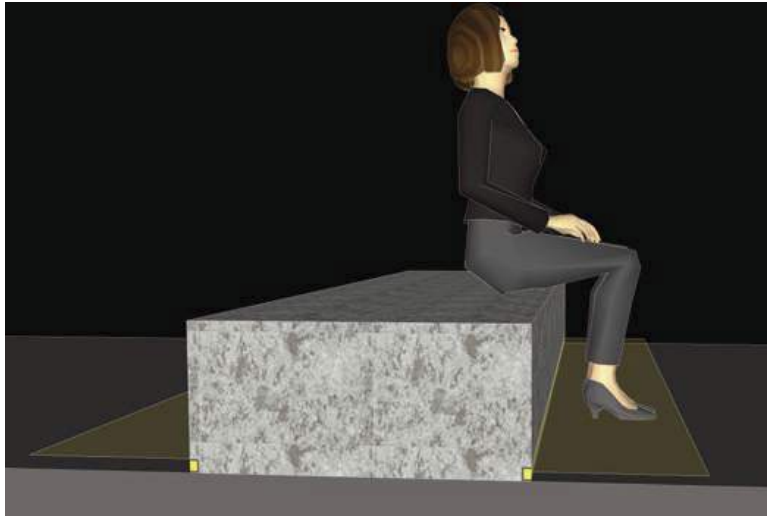
Water feature & sculpture lighting

SAN JACINTO BLVD

TRINITY STREET

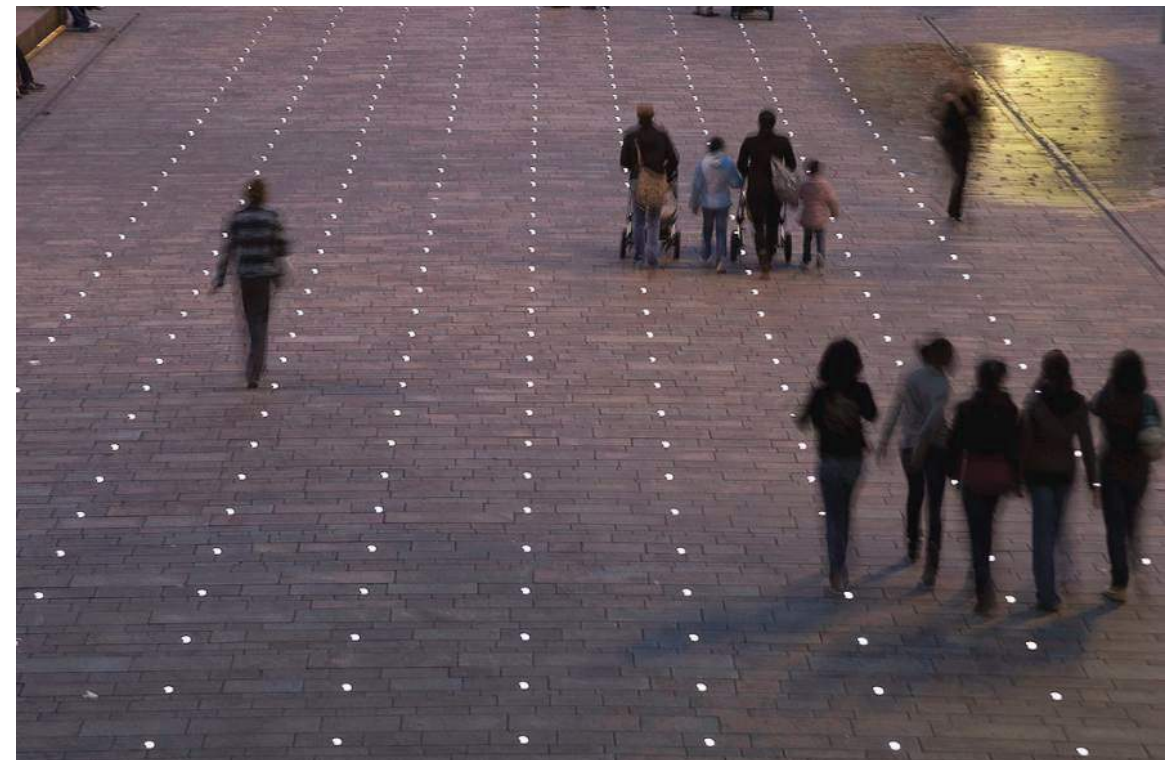


E 2ND STREET



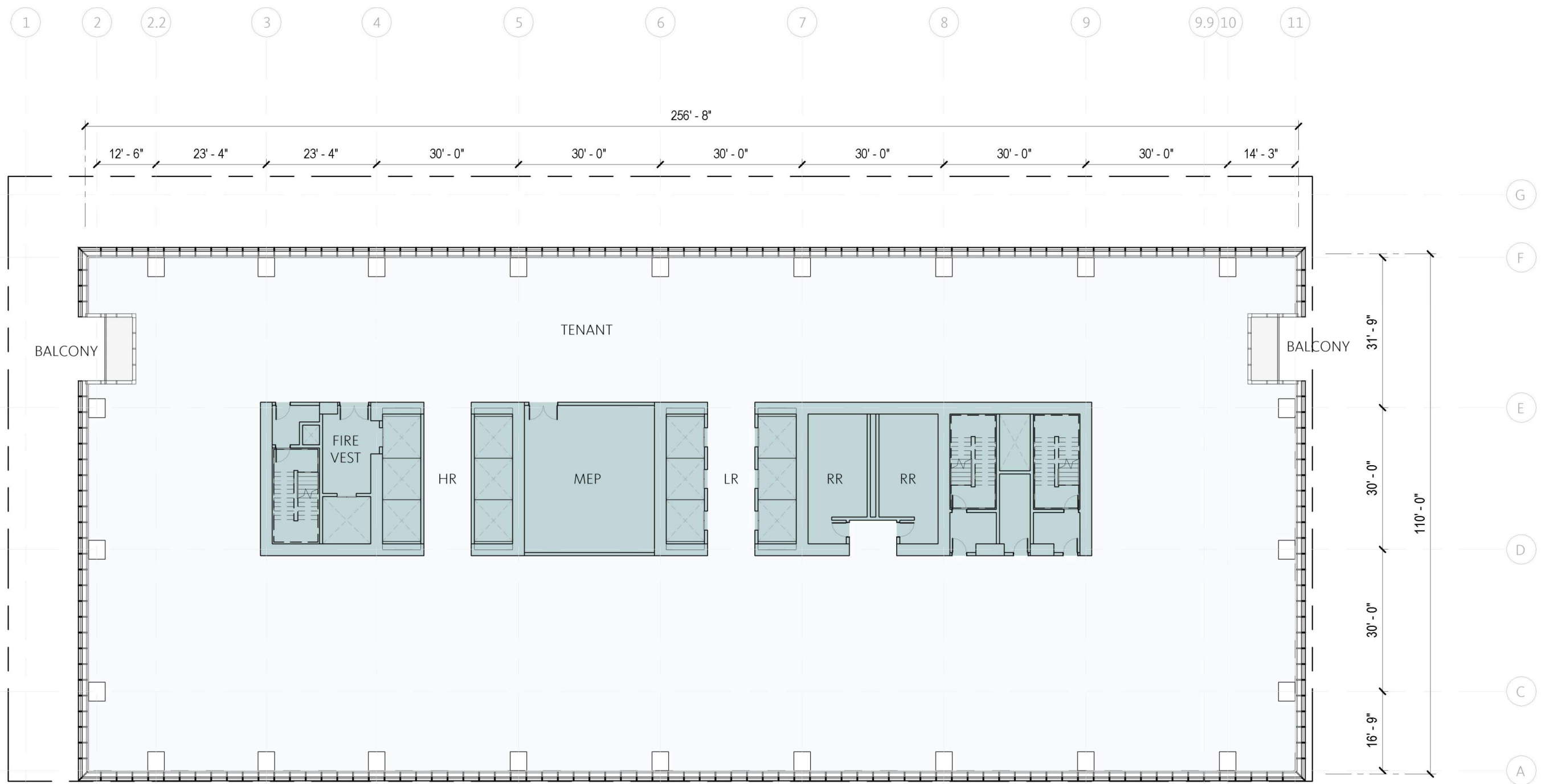


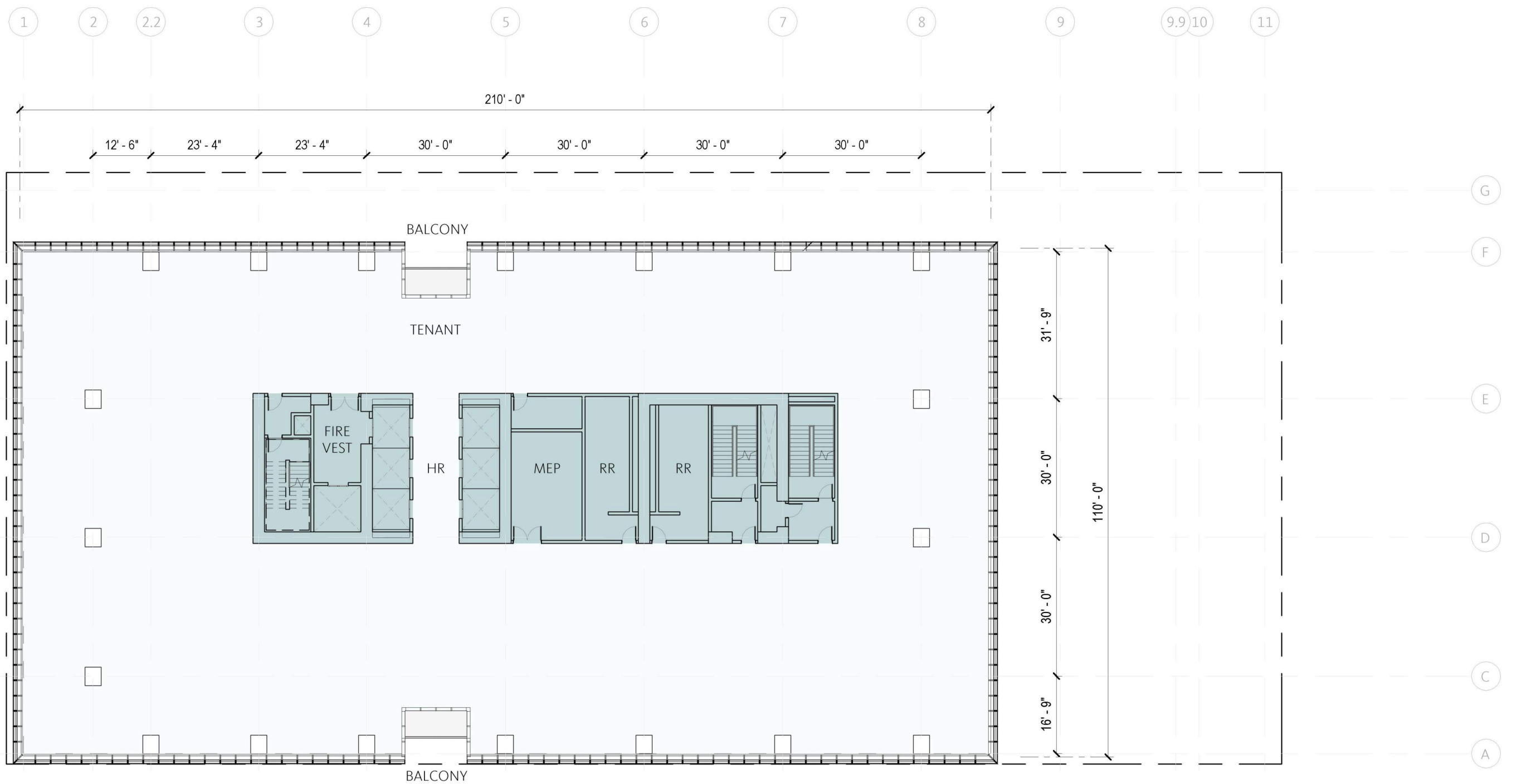




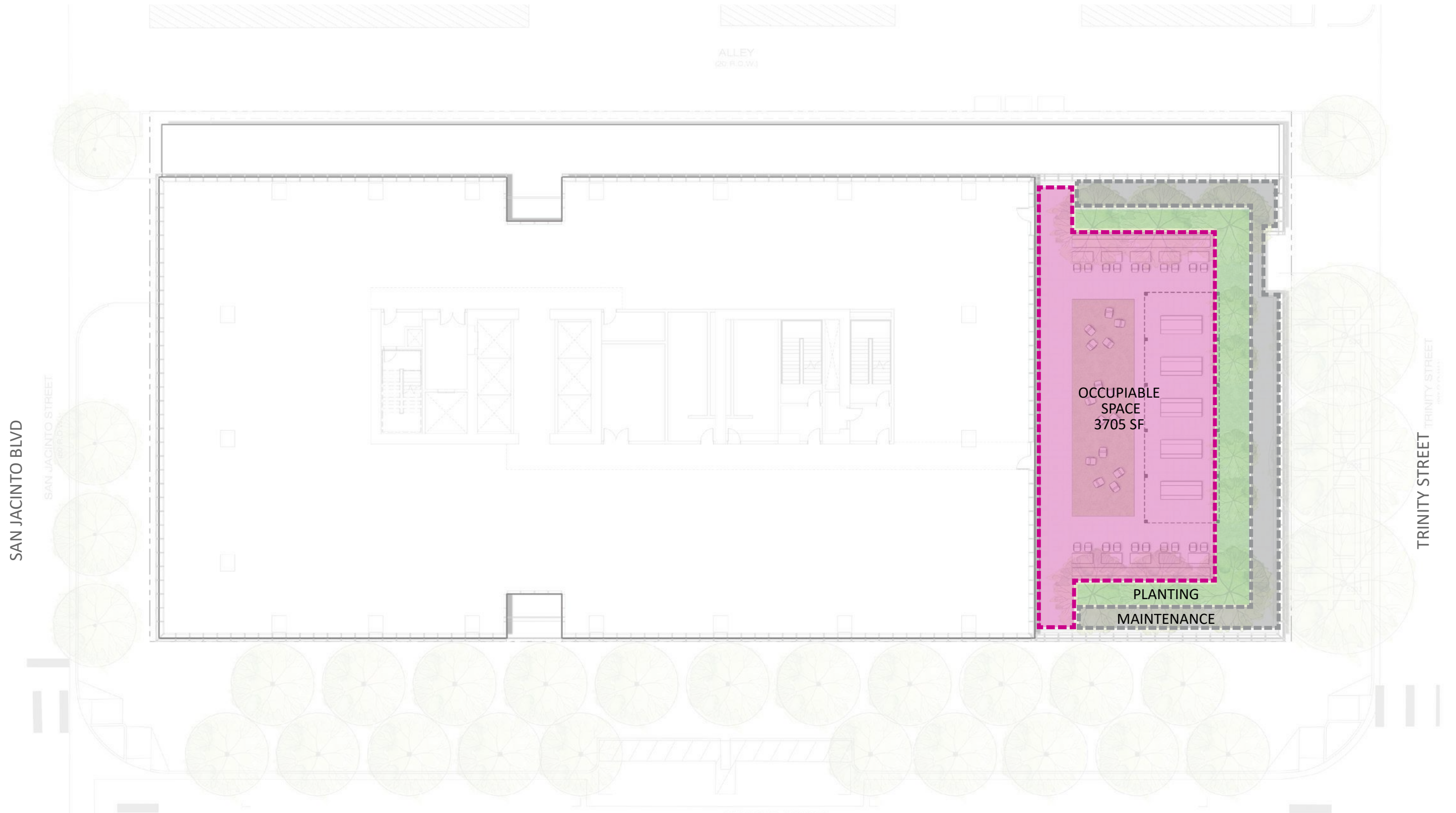




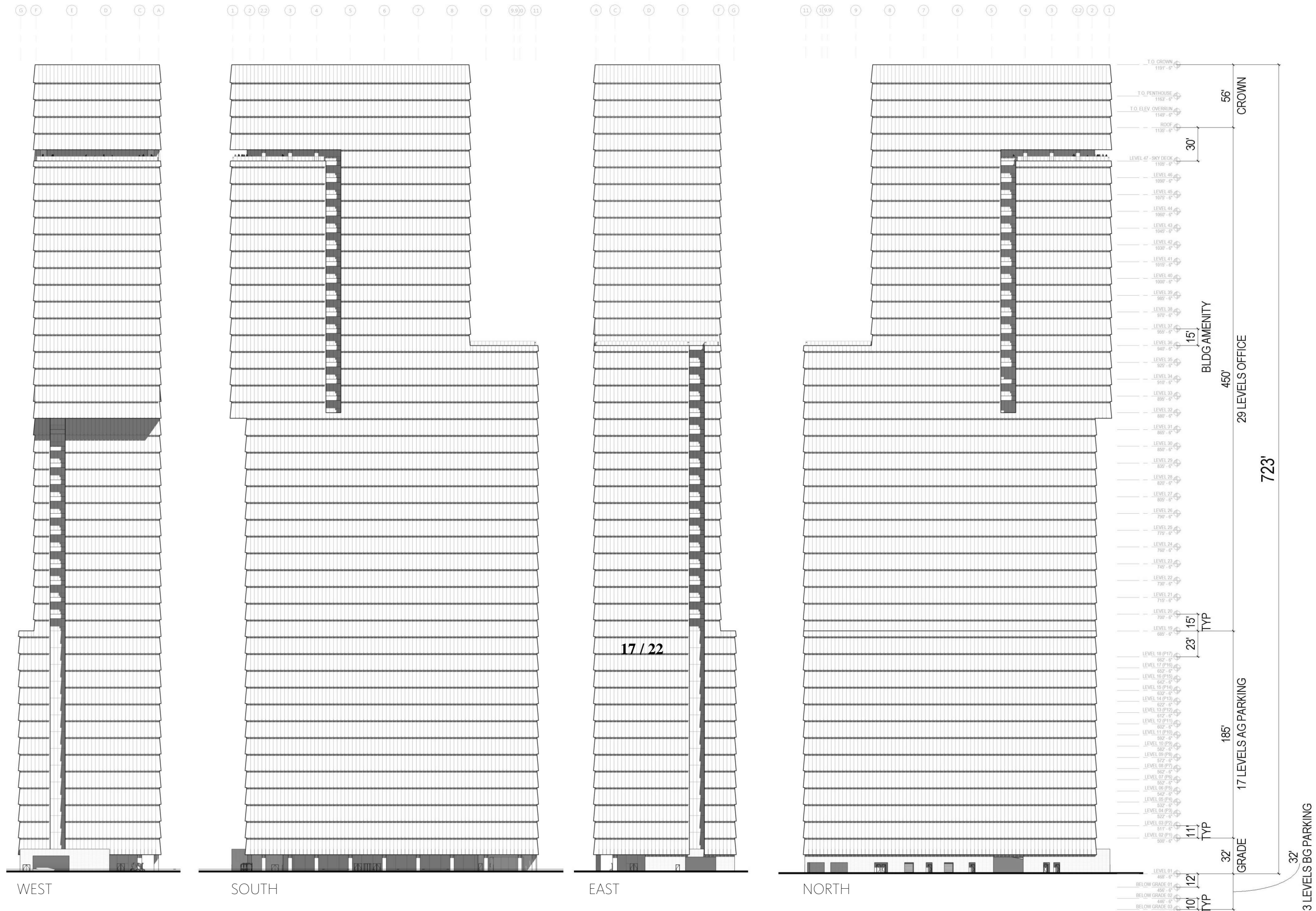












BUILDING ELEVATIONS



VIEW FROM SOUTHEAST



An aerial photograph of a city skyline at dusk. The sky is a mix of light blue and orange. In the foreground, a large, dark, modern building with a glass facade is prominent. To its right, a cluster of other skyscrapers is visible, including one with a distinctive pointed top. The city extends into the distance, with a river or body of water visible on the left. The overall mood is serene and urban.

THANK YOU

MANIFOLD + **Gensler**

JW MARRIOTT

HYATT PLACE