



FLOODPLAIN OFFICE UPDATE

Watershed Protection Department
Waller Creek LGC | September 16, 2020



Floodplain Office Update

What have we completed?

What are we doing now?

What are we working on?

What have we completed?

Atlas 14-related floodplain regulations code revision (effective date: Nov 25, 2019)

1. Temporarily: 100-year floodplain = 500-year floodplain
 - not on Colorado River or lower Waller Creek

What have we completed?

Atlas 14-related floodplain regulations code revision (effective date: Nov 25, 2019)

1. Temporarily: 100-year floodplain = 500-year floodplain
 - not on Colorado River or lower Waller Creek
2. Residential redevelopment exception
 - safe access exception for minor additions to residential buildings

What have we completed?

Atlas 14-related floodplain regulations code revision (effective date: Nov 25, 2019)

1. Temporarily: 100-year floodplain = 500-year floodplain
 - not on Colorado River or lower Waller Creek
2. Residential redevelopment exception
 - safe access exception for minor additions to residential buildings
3. Freeboard increase to 2 feet

What have we completed?

Atlas 14-related floodplain regulations code revision (effective date: Nov 25, 2019)

1. Temporarily: 100-year floodplain = 500-year floodplain
 - not on Colorado River or lower Waller Creek
2. Residential redevelopment exception
 - safe access exception for minor additions to residential buildings
3. Freeboard increase to 2 feet
4. Expand the Colorado River exception
 - no impact to Lady Bird Lake (exception already existed)

What have we completed?

Revised Drainage Criteria Manual to incorporate updated Atlas 14 rainfall information

- Applies to design for all drainage infrastructure
- Effective date January 2020

What are we doing now?

Additional floodplain regulations code revision

- Commercial redevelopment exception. Draft language includes:
 - No increase in building square footage
 - No increase in occupant load
 - Limit uses (educational, factory, high hazard, institutional not allowed)
 - No increase in parking flood risk

What are we working on?

Updated floodplain studies using Atlas 14 rainfall data

- Re-studying all creeks in city
 - City of Austin and FEMA floodplains
- Received FEMA grants (~\$2.4M); Applied for TWDB grant
- 2-3 year process
 - Approximately 4 years for FEMA map updates

Waller Creek Tunnel LOMR Status

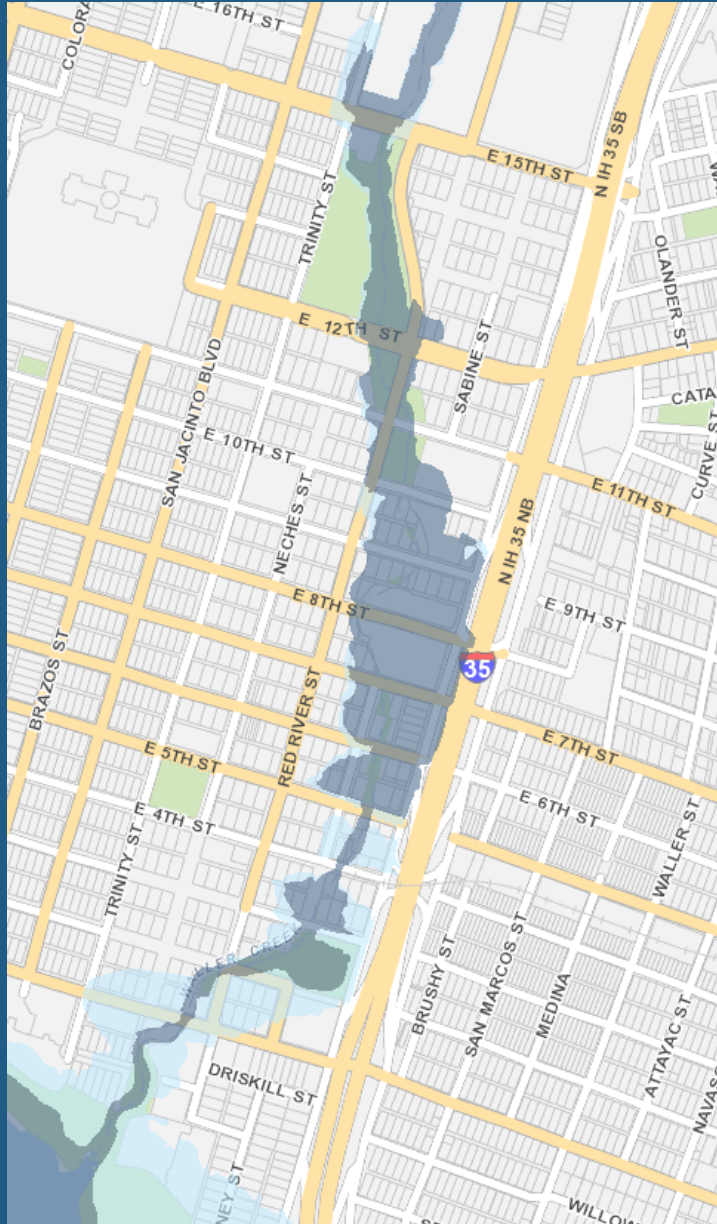
Approximate timeline

- 1st Draft submittal of LOMR to City – April 2021
- Submittal to FEMA – June 2021
- FEMA approval – March 2022



FLOODPLAIN OFFICE UPDATE

Pre-tunnel (and
current
effective)
FEMA
floodplains



Post-tunnel (and
regulatory)
floodplains

