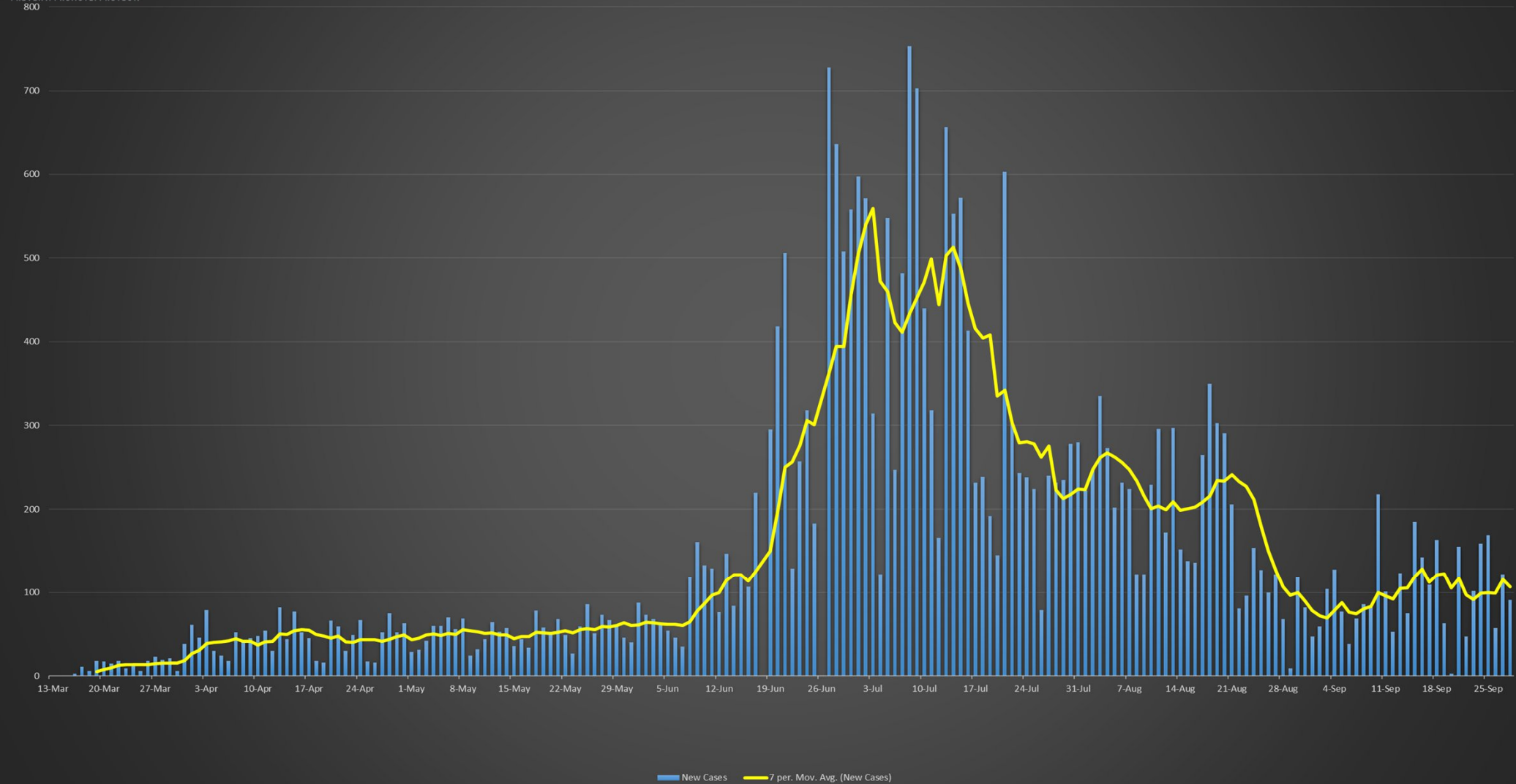

COVID-19 Update

September 29, 2020

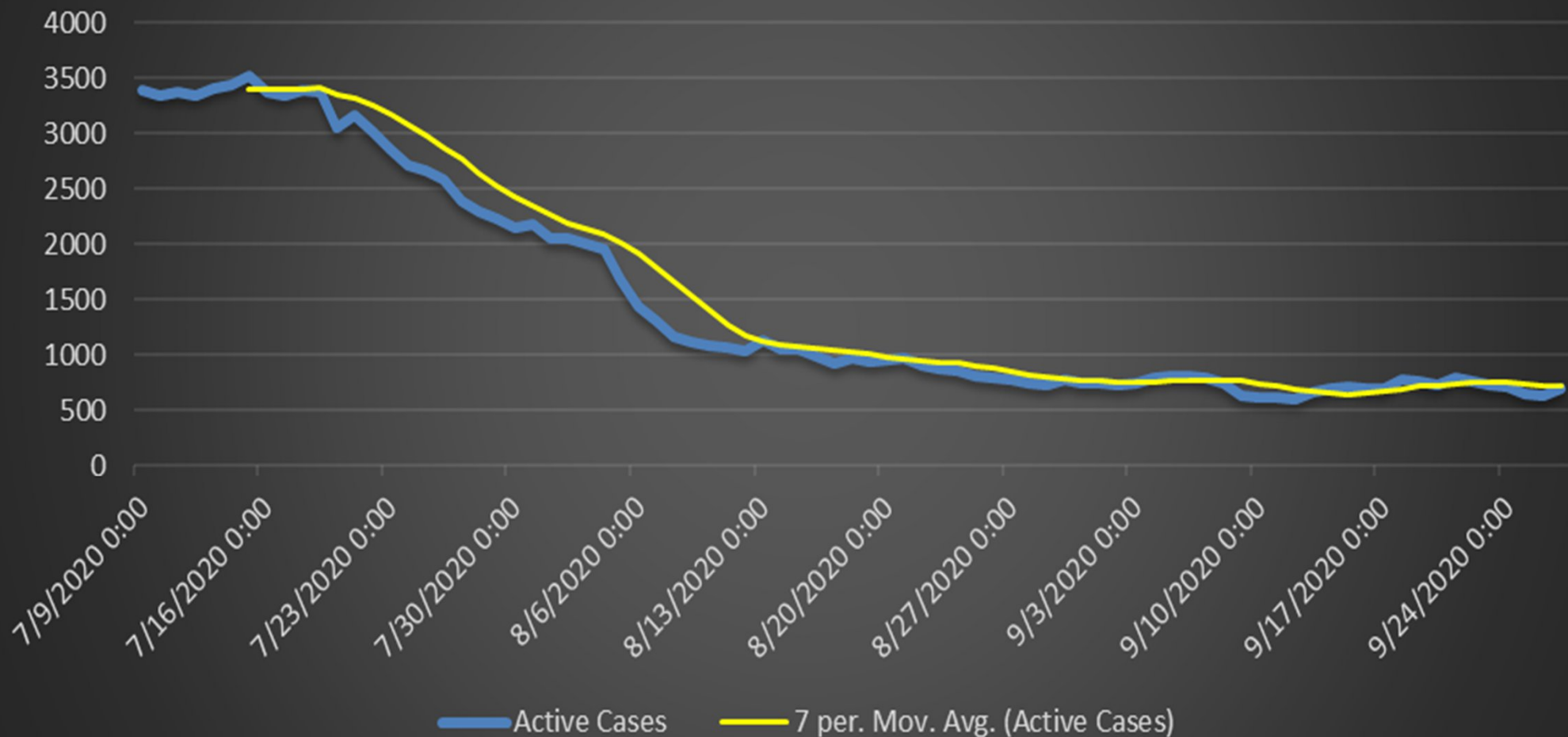
Austin Public Health

Mark Escott, MD, MPH, Interim Health Authority

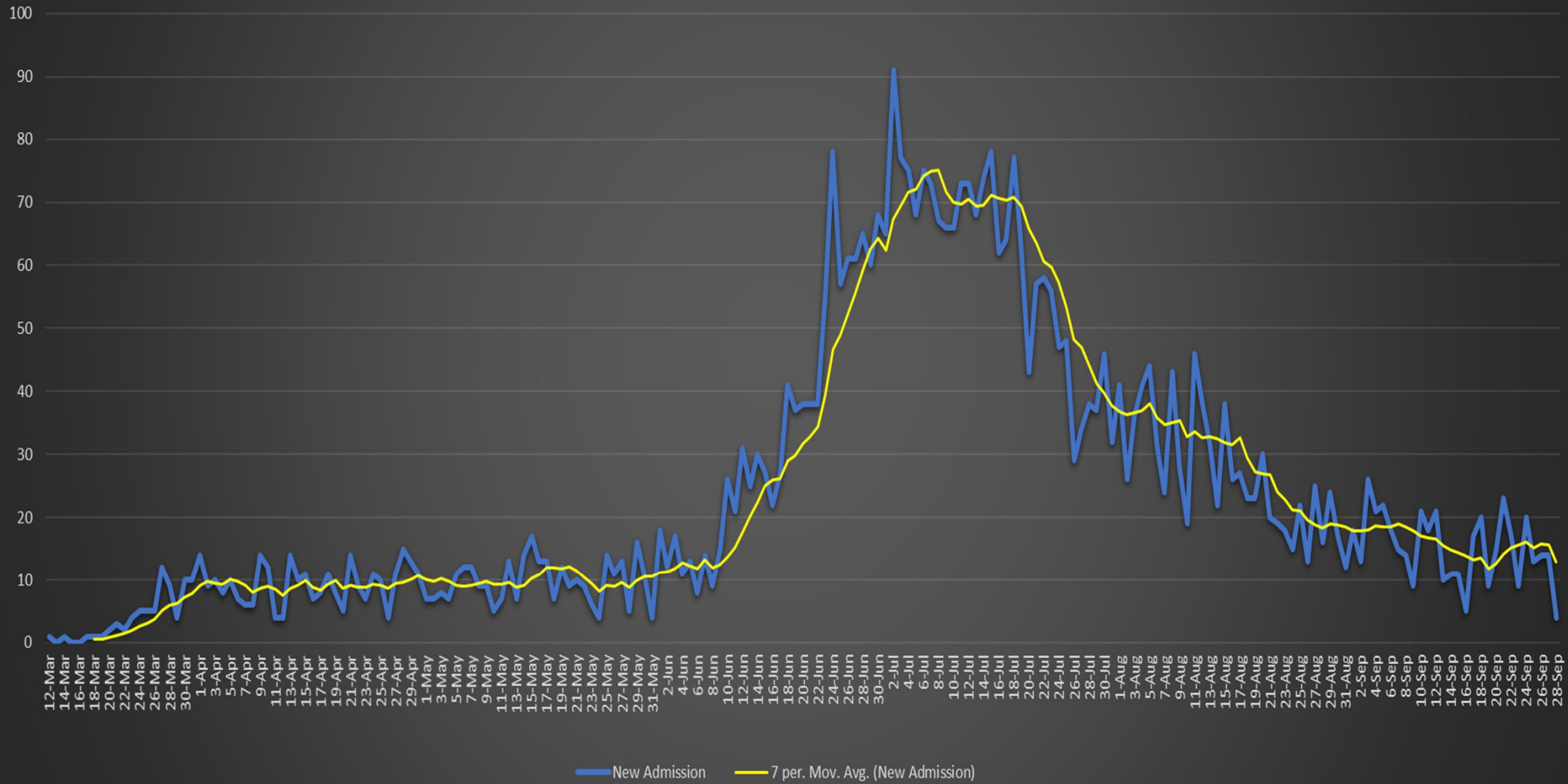
COVID-19 Travis County New Confirmed Cases



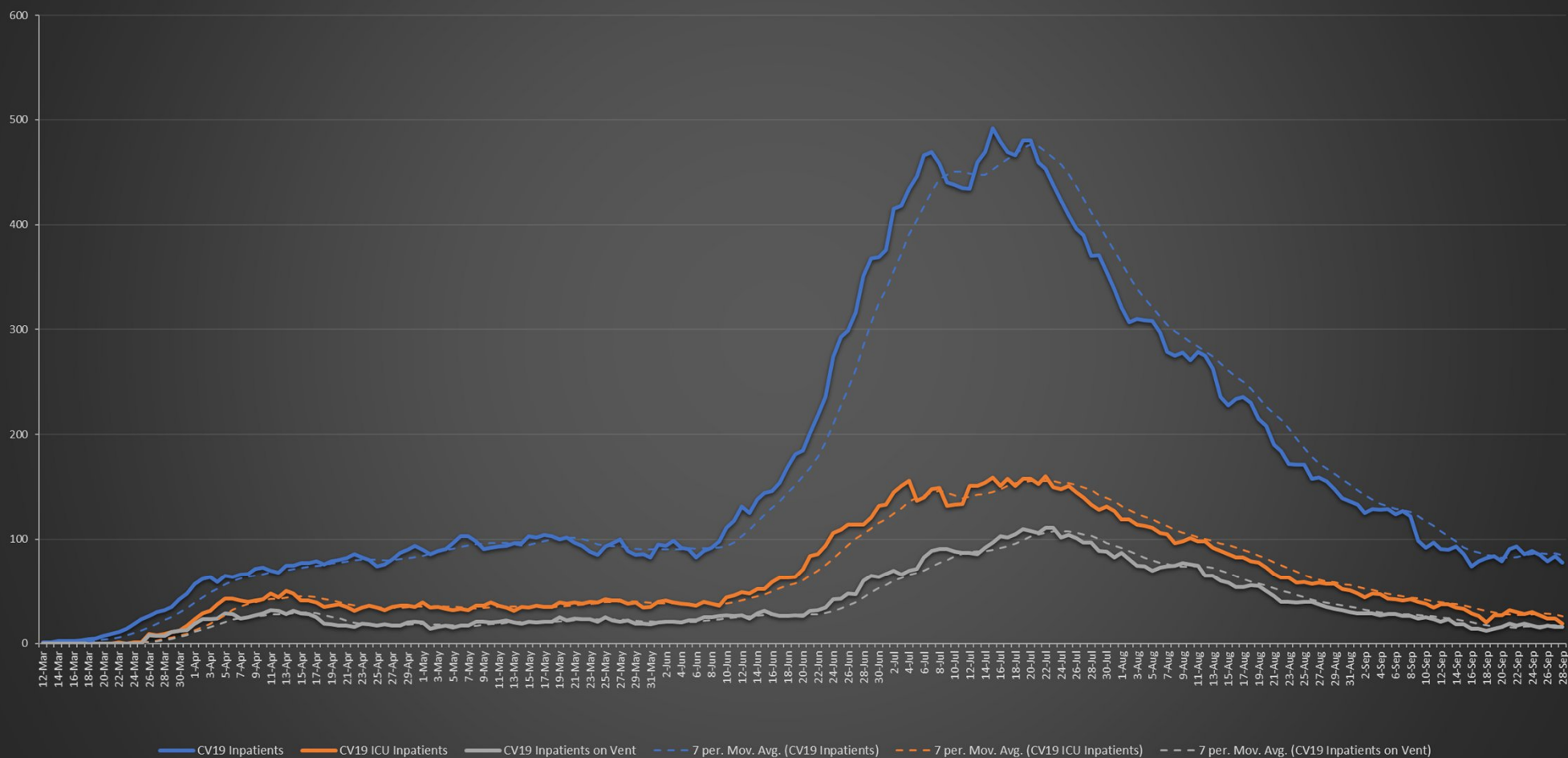
Austin-Travis County COVID-19 Active Cases



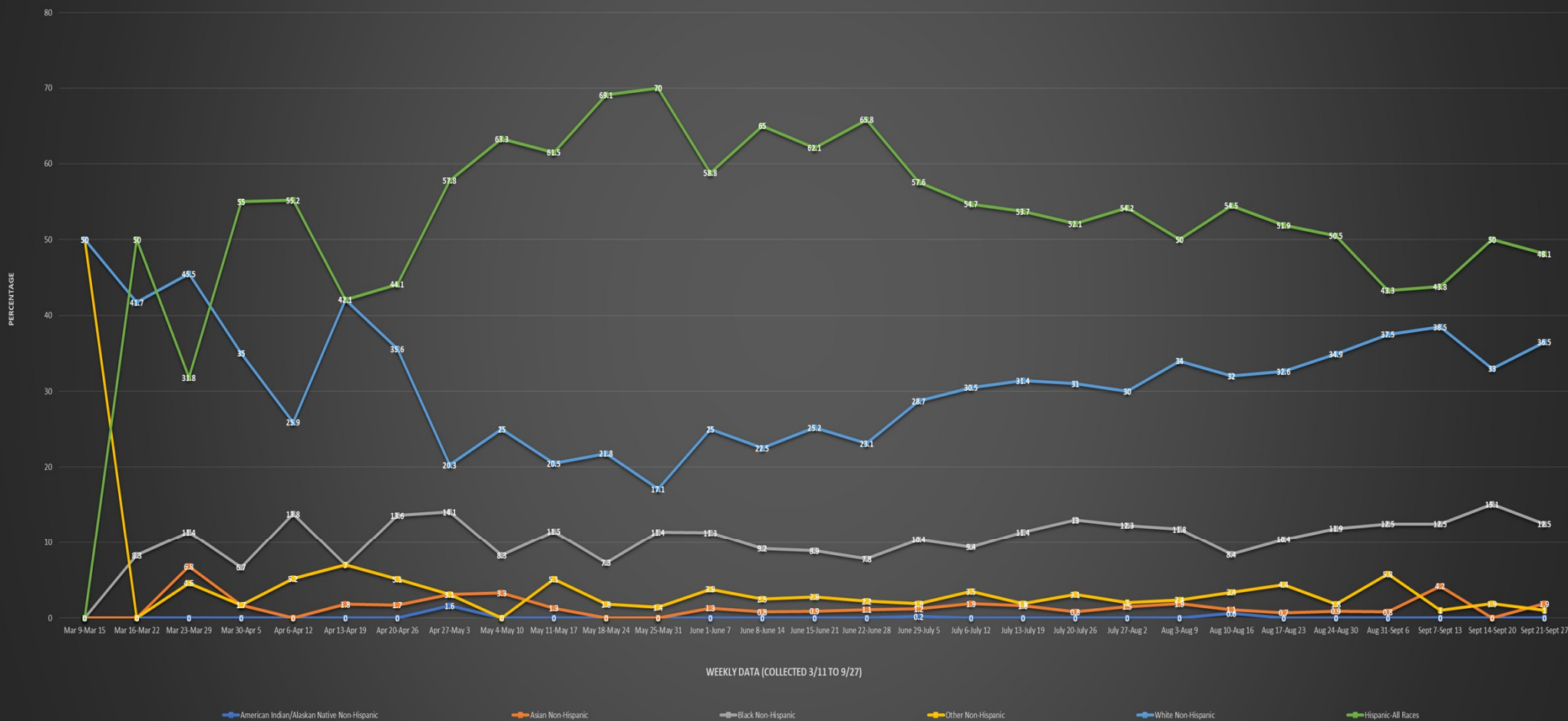
COVID-19 Austin MSA New Admissions



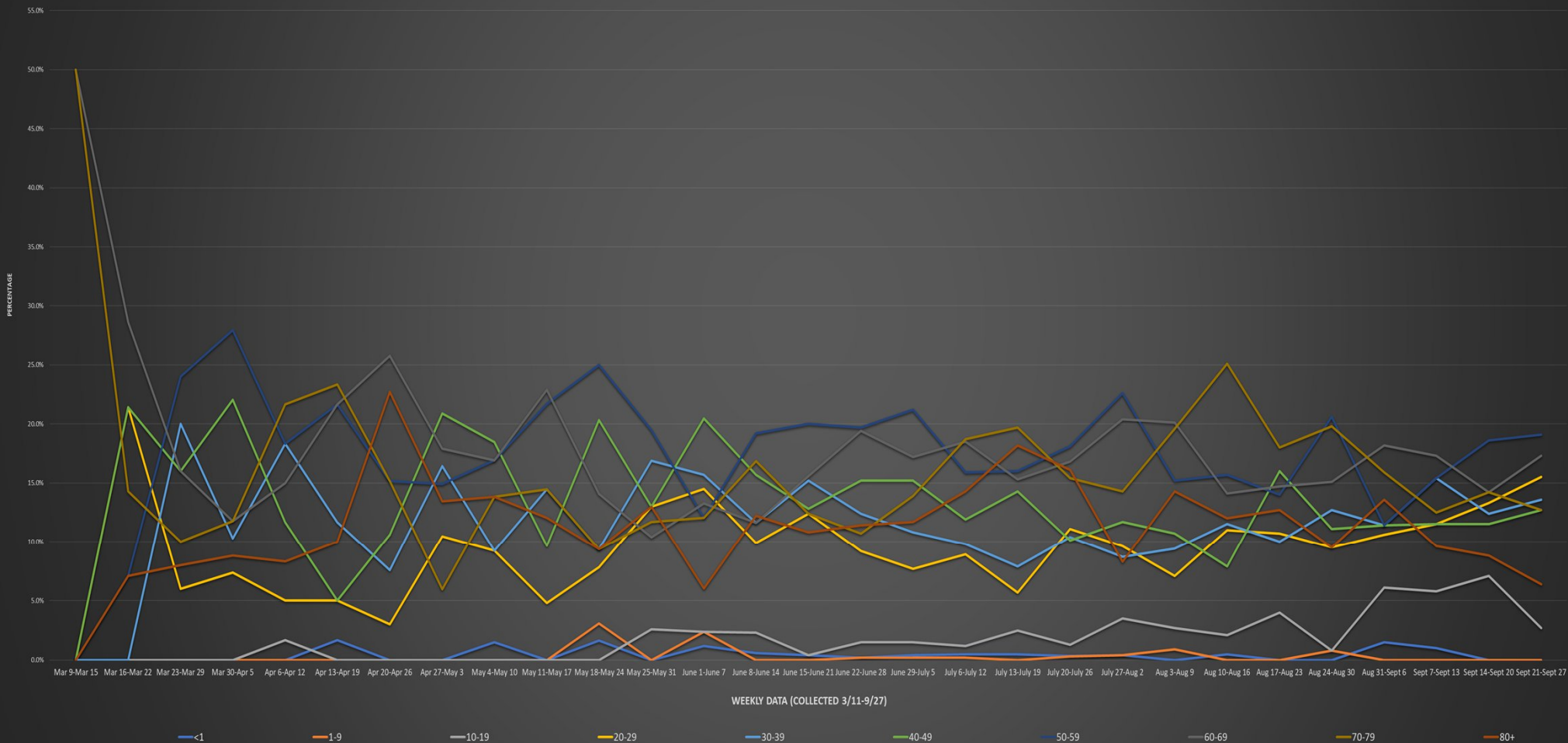
COVID-19 AUSTIN MSA CURRENT HOSPITALIZATIONS, ICU ADMISSIONS, AND VENTILATOR USE



City of Austin - Travis County COVID-19 Hospitalization by Race & Ethnicity (Austin MSA)

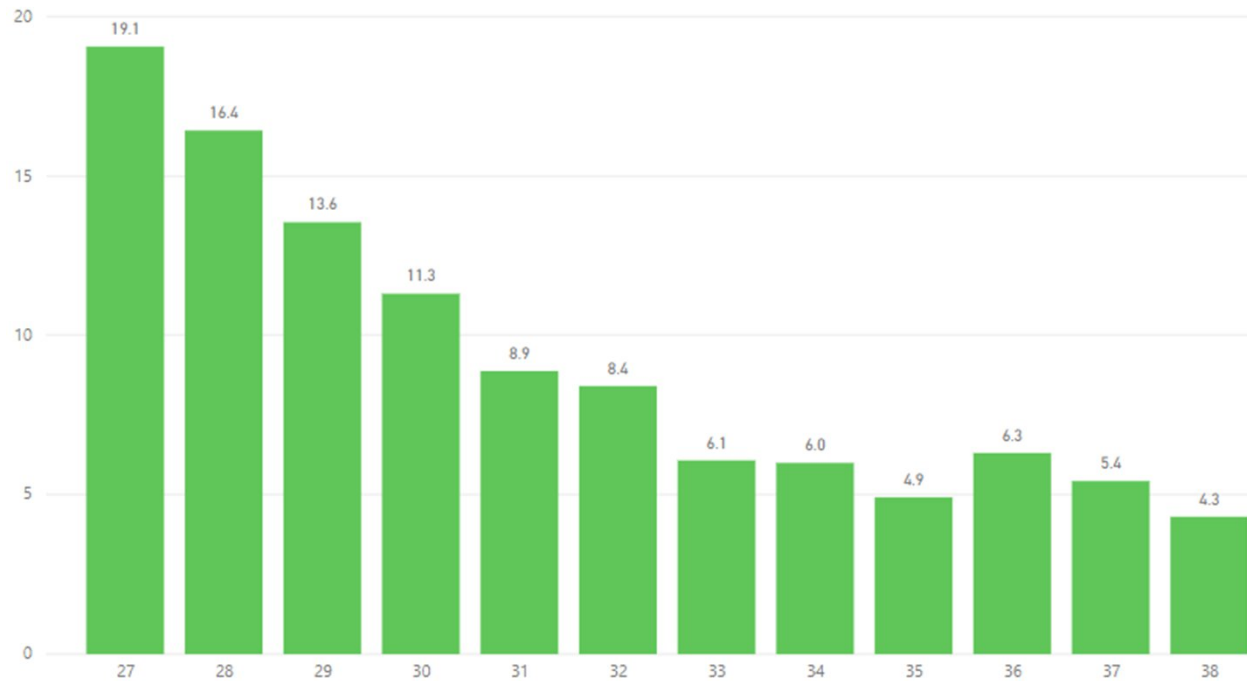


City of Austin - Travis County COVID-19 Hospitalization by Age Group (Austin MSA)



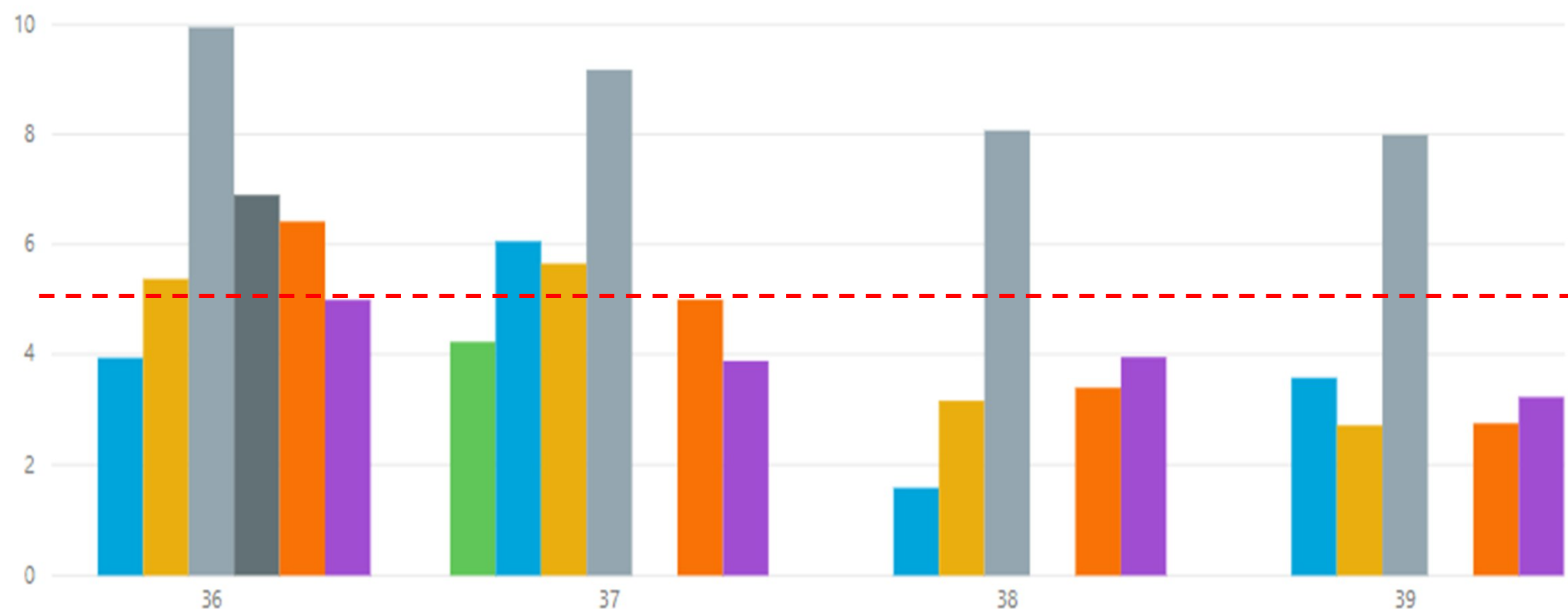
Travis County COVID-19 Percent Positive by Week

Percent Positive by Test Collection Week - Last 12 Weeks



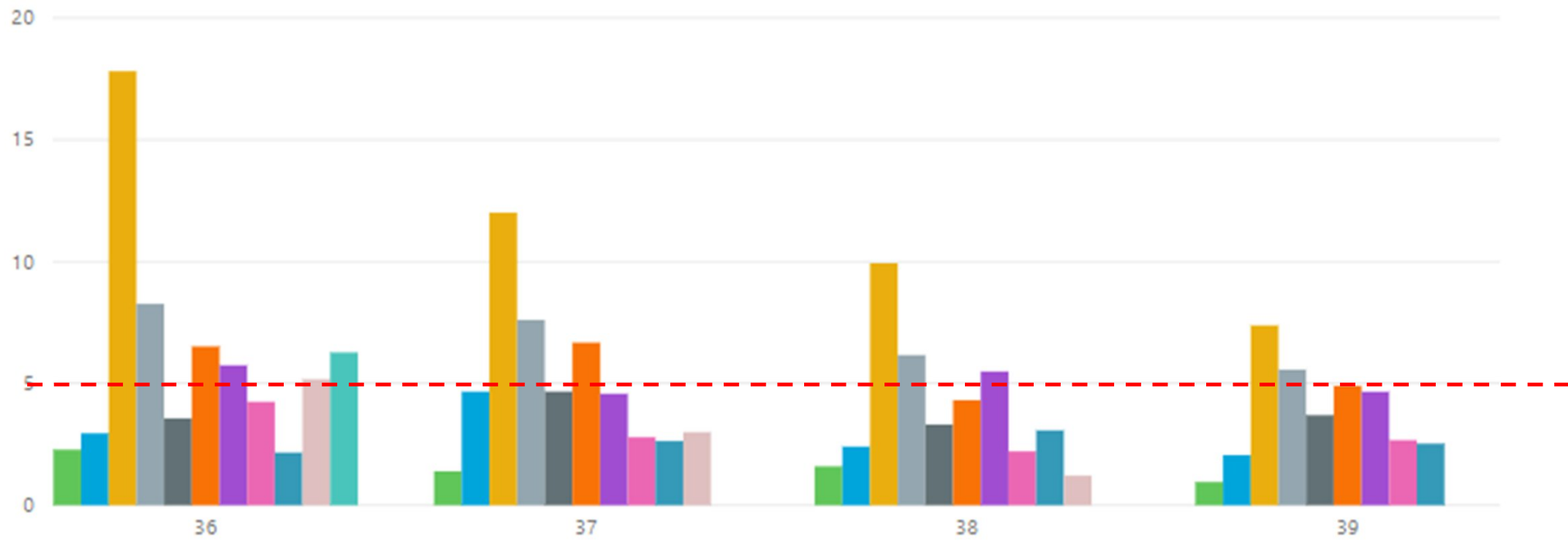
Percent Positive By Race/Ethnicity - Last Four Weeks

Race/Ethnicity
 ● American Indian or Alaska Native
 ● Asian
 ● Black or African American
 ● Hispanic or Latino
 ● Native Hawaiian or Other Pacific Islander
 ● Other
 ● White



Percent Positive By Age Group and Week - Last Four Weeks

Age Group at Collection ● <1 ● 01-09 ● 10-19 ● 20-29 ● 30-39 ● 40-49 ● 50-59 ● 60-69 ● 70-79 ● 80+ ● Unknown



School COVID-19 Reports to APH Nurse Line

- COVID Positive Students
 - Week Ending 9/26: 1
 - Total Since 8/16: 24
- COVID Positive Staff
 - Week Ending 9/26: 3
 - Total Since 8/16: 21
- Student Close Contacts
 - Week Ending 9/26: 37
 - Total Since 8/16: 63
- Staff Close Contacts
 - Week Ending 9/26: 7
 - Total Since 8/16: 53



Austin-Travis COVID-19 Weekly Testing Rates Dashboard

For more information on COVID-19 visit:
<http://austintexas.gov/covid19>

Reported by Austin Public Health: Data Refreshed: 9/22/2020
All numbers are provisional and subject to change.



Highest Positivity and

Highest Increase in Weekly Percent Positive

296.2%
ZIP: 78723

Highest Percent of Positive Test Results

12.8%
ZIP: 78744

Highest Percent Increase in New Cases Over Last 7 Days

198.3%
ZIP: 78705

Overall Austin-Travis County COVID-19 Percent

4.4

Weekly Percent of Positive Test Results

7.5%

Weekly Positive Test Results

14

Increase in Weekly Percent Positive

3.5%

Weekly Positive Test Results

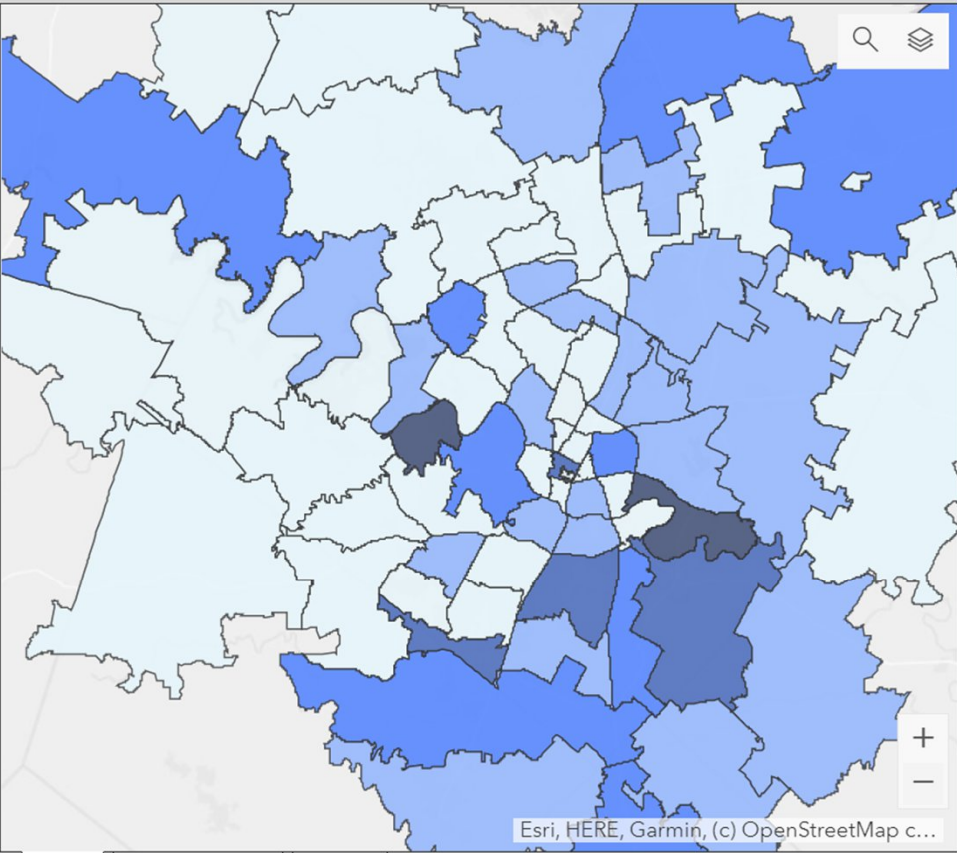
24

New Cases Over Last 7 Days

176

New Cases Over Last 14 Days

235



Map

Case Statistics

Notes



Austin - Travis County COVID-19 Long Term Care Facility

For more information on COVID-19 visit:

Reported by Austin Public Health: Data
Refreshed: 9/25/2020



Arbor Terrace Lakeway (AL)

Cases within last 14 days: 0
Cases within last 28 days: 0

Arden Courts (AL)

Cases within last 14 days: 0
Cases within last 28 days: 0

Auberge at Bee Caves (AL)

Cases within last 14 days: 0
Cases within last 28 days: 1

Auberge at Onion Creek (AL)

Cases within last 14 days: 0
Cases within last 28 days: 0

Austin Healthcare and Rehab (NH)

Cases within last 14 days: 0
Cases within last 28 days: 0

Cases

1,638

New Cases Within Last 14 Days

63

New Cases Within Last 28 Days

99

Deaths

176

Resident Cases for All Travis County LTCFs



Staff Cases for All Travis County LTCFs



Resident/Staff Epi Curve

Cumulative Count, & Resources

Hover over segment to see details

Resident Ethnicity



Resident Age Group



Staff Ethnicity



Staff Age Group



Resident Race



Resident Sex



Staff Race



Staff Sex



Demographics

Notes

COVID-19: Risk-Based Guidelines

Recommended thresholds 7-day average hospital admits		Practice Good Hygiene	Maintain Social Distancing	Wear Facial Coverings	Higher Risk Individuals Aged 65+, diabetes, high blood pressure, heart, lung and kidney disease, immunocompromised, obesity			Avoid Gatherings	Avoid Non-Essential Travel	Avoid Dining/Shopping	Workplaces Open
		Stay Home If Sick Avoid Sick People			Avoid Gatherings	Avoid Non-Essential Travel	Avoid Dining/Shopping				
0	Stage 1	•			Greater than 25		Except with precautions	Gathering size TBD			All businesses
< 10	Stage 2	•	•	•	Greater than 10		Except as essential	Greater than 25			Essential and reopened businesses
10 - 39	Stage 3	•	•	•	Social and greater than 10	•	Except as essential	Social and greater than 10			Essential and reopened businesses
40 - (70 to 123)*	Stage 4	•	•	•	Social and greater than 2	•	Except as essential	Social and Greater than 10	•	Except expanded essential businesses	Expanded essential businesses
> (70 - 123)* (depending on rate of increase)	Stage 5	•	•	•	Outside of household	•	Except as essential	Outside of household	•	Except as essential	Essential businesses only

* The exact hospitalization average trigger will depend on the rate of increase. A faster increase in the daily average will trigger stage 5 risk recommendations when the number reaches the lower end of this range.

Use this color-coded alert system to understand the stages of risk. This chart provides recommendations on what people should do to stay safe during the pandemic. Individual risk categories identified pertain to known risks of complication and death from COVID-19. This chart is subject to change as the situation evolves.

