


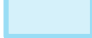


Proposed Conservation Easement of Webb Property in Hays County

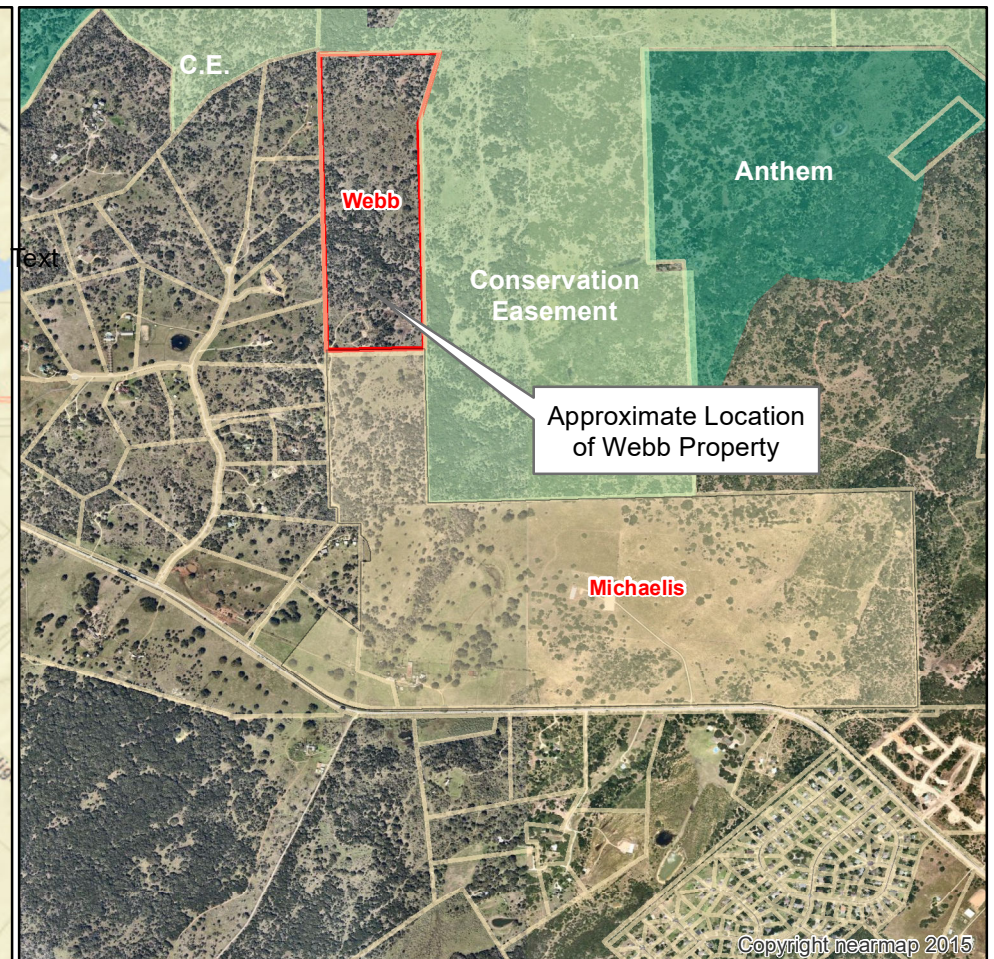
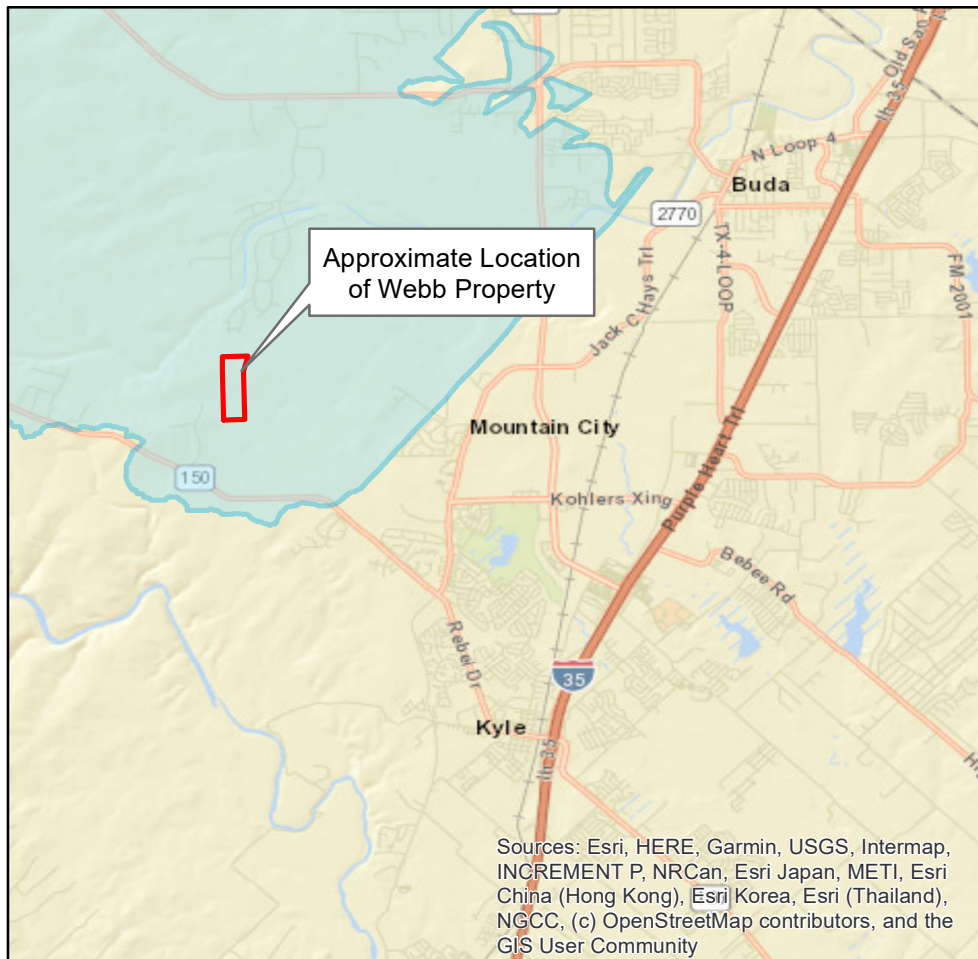
-  Hays Parcels
-  Water Quality Protection Lands
-  Webb Property (Approximately 100 acres)
-  Edwards Aquifer Recharge Zone



This product is for informational purposes and may not have been prepared for or be suitable for legal, engineering, or surveying purposes. It does not represent an on-the-ground survey and represents only the approximate relative location of property boundaries.

This product has been produced by the Watershed Protection Department for the Office of Real Estate Services for the sole purpose of geographic reference. No warranty is made by City of Austin regarding specific accuracy or completeness.

Produced by S. Hiers, 8/28/2020



0 1 2 4 Miles

0 0.25 0.5 1 Miles