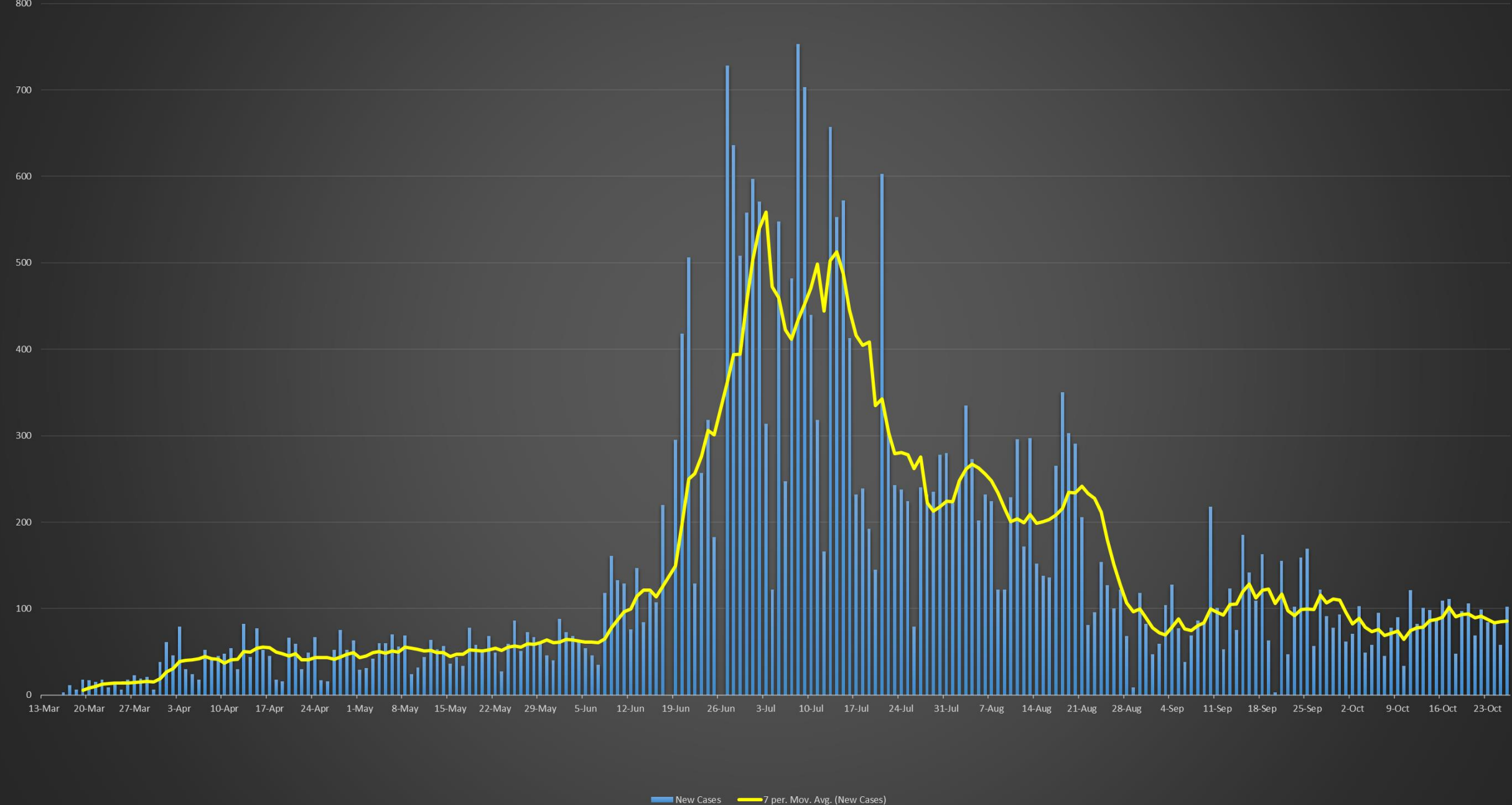

COVID-19 Update

October 27, 2020

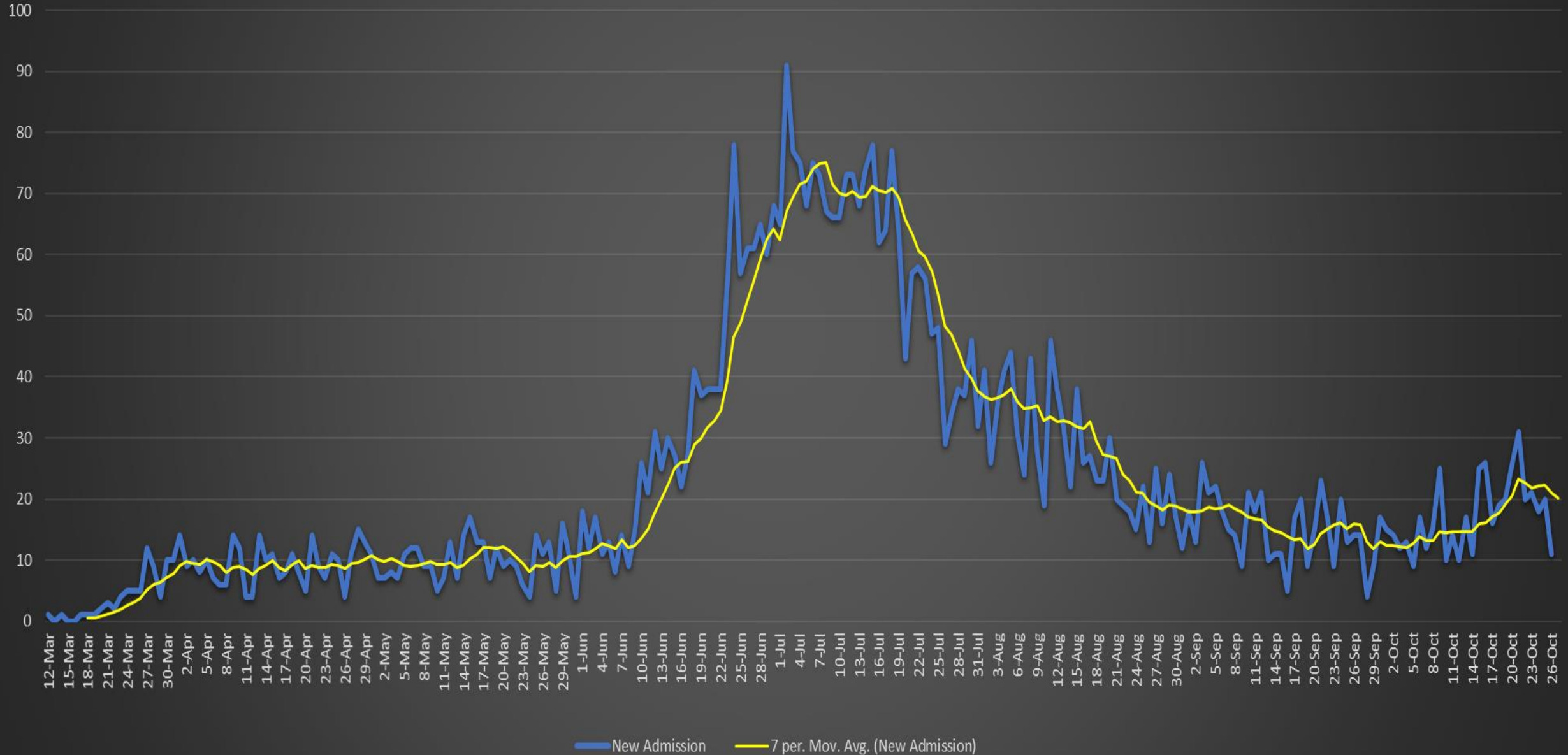
Austin Public Health

Mark Escott, MD, MPH, Interim Health Authority

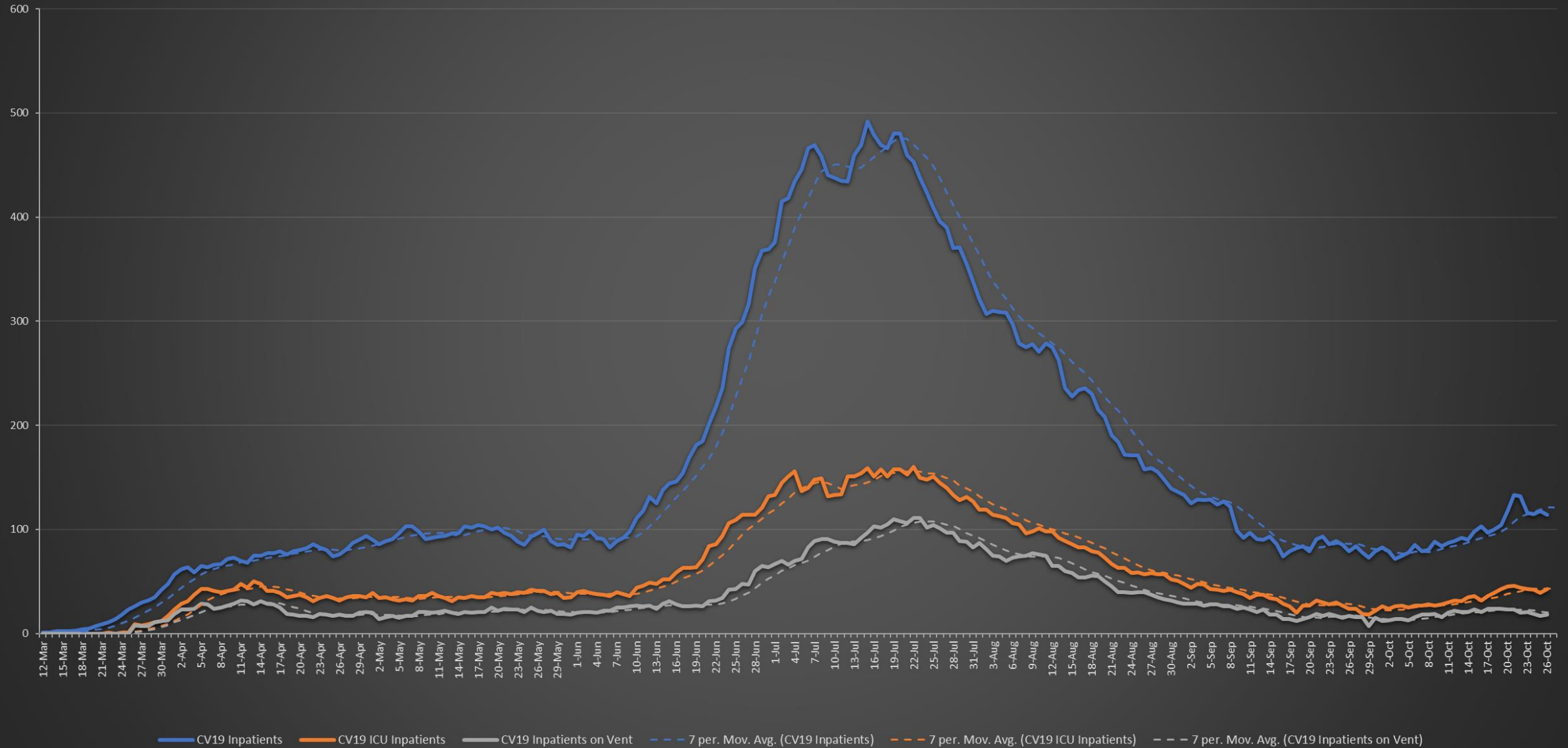
COVID-19 Travis County New Confirmed Cases



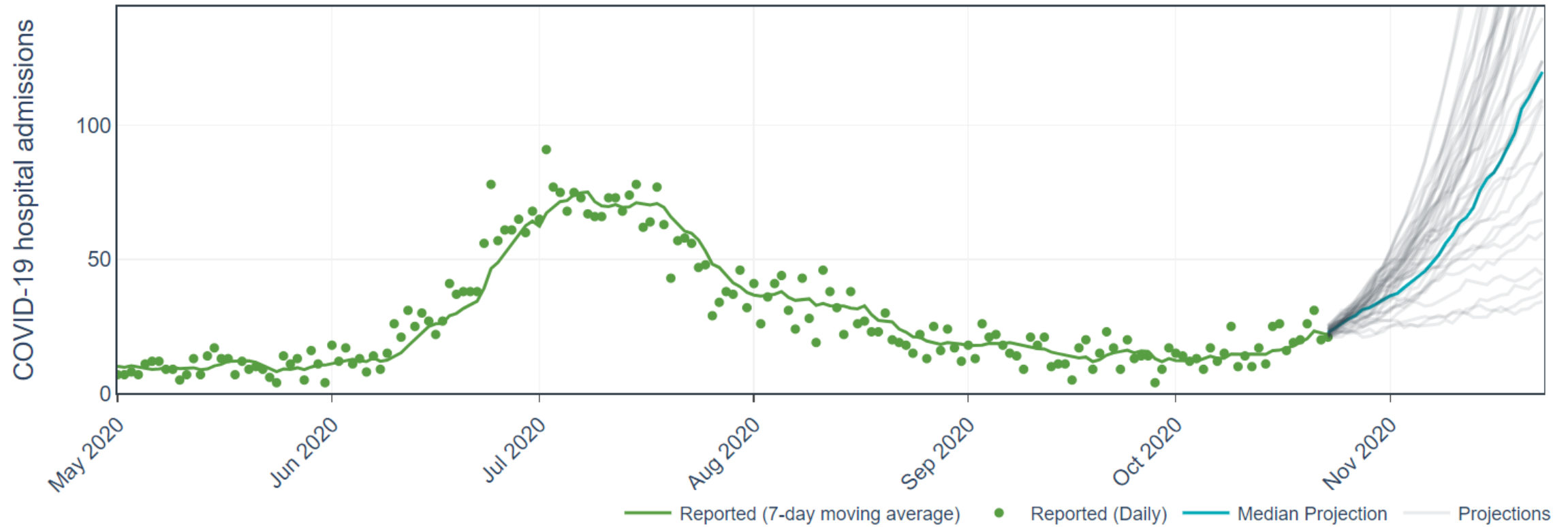
COVID-19 Austin MSA New Admissions



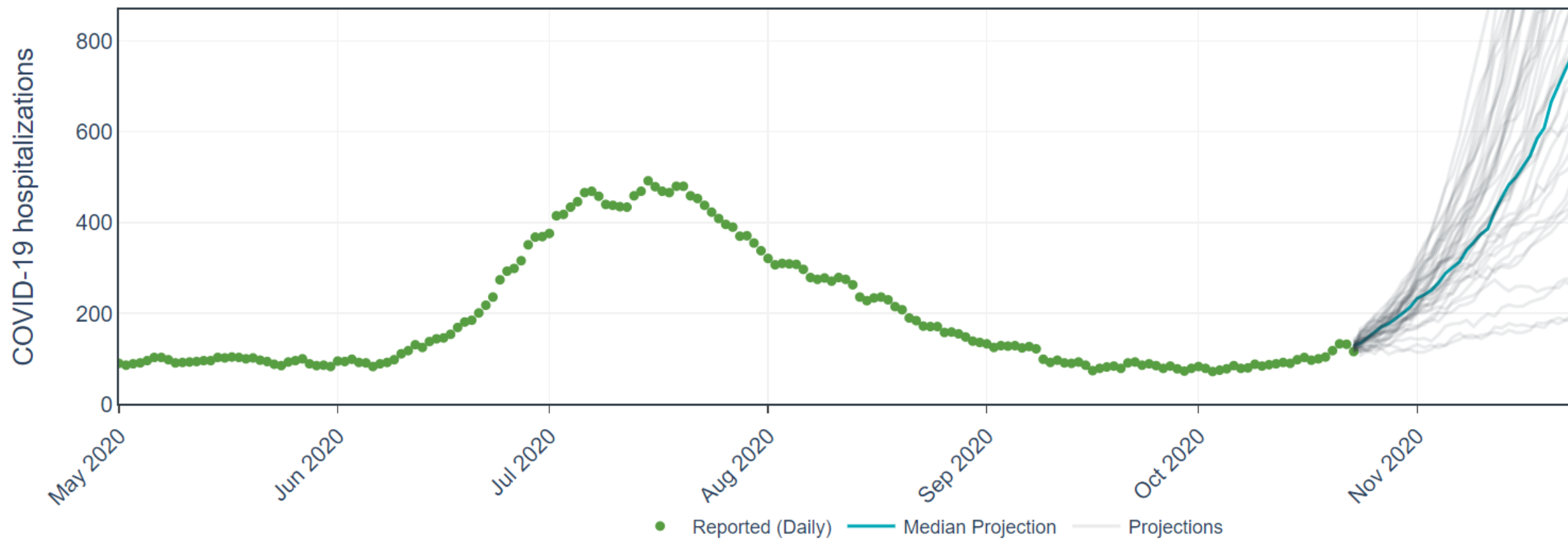
COVID-19 AUSTIN MSA CURRENT HOSPITALIZATIONS, ICU ADMISSIONS, AND VENTILATOR USE



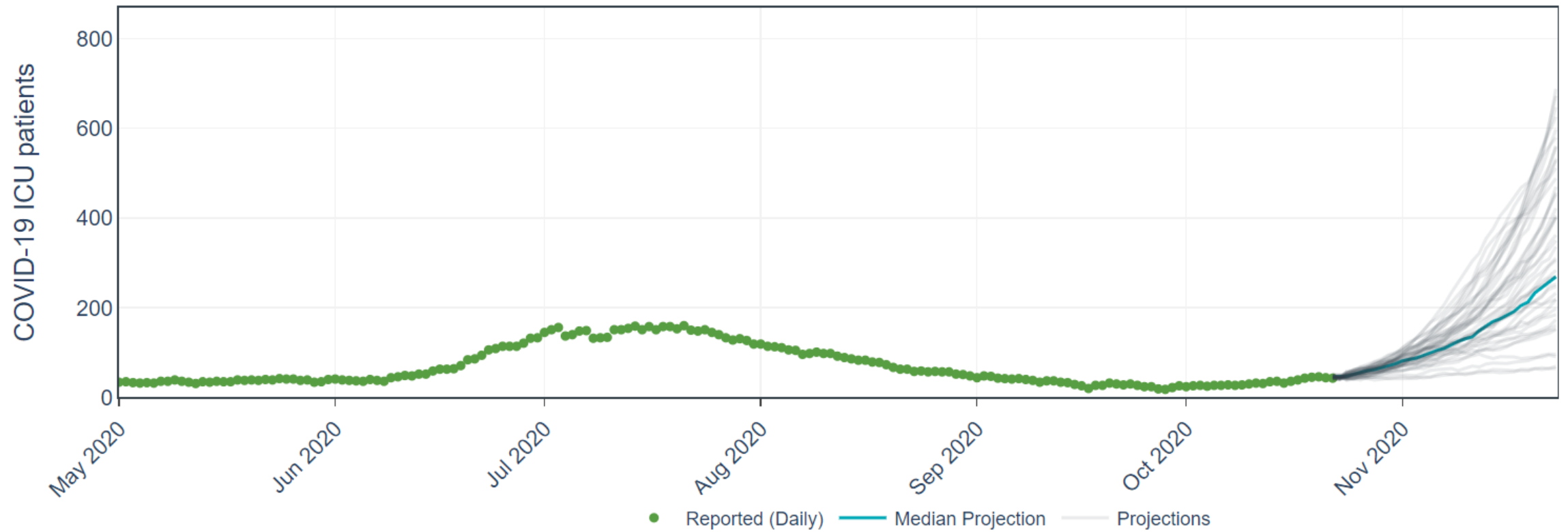
Daily COVID-19 Hospital Admissions in the Austin-Round Rock MSA (7 day moving average)



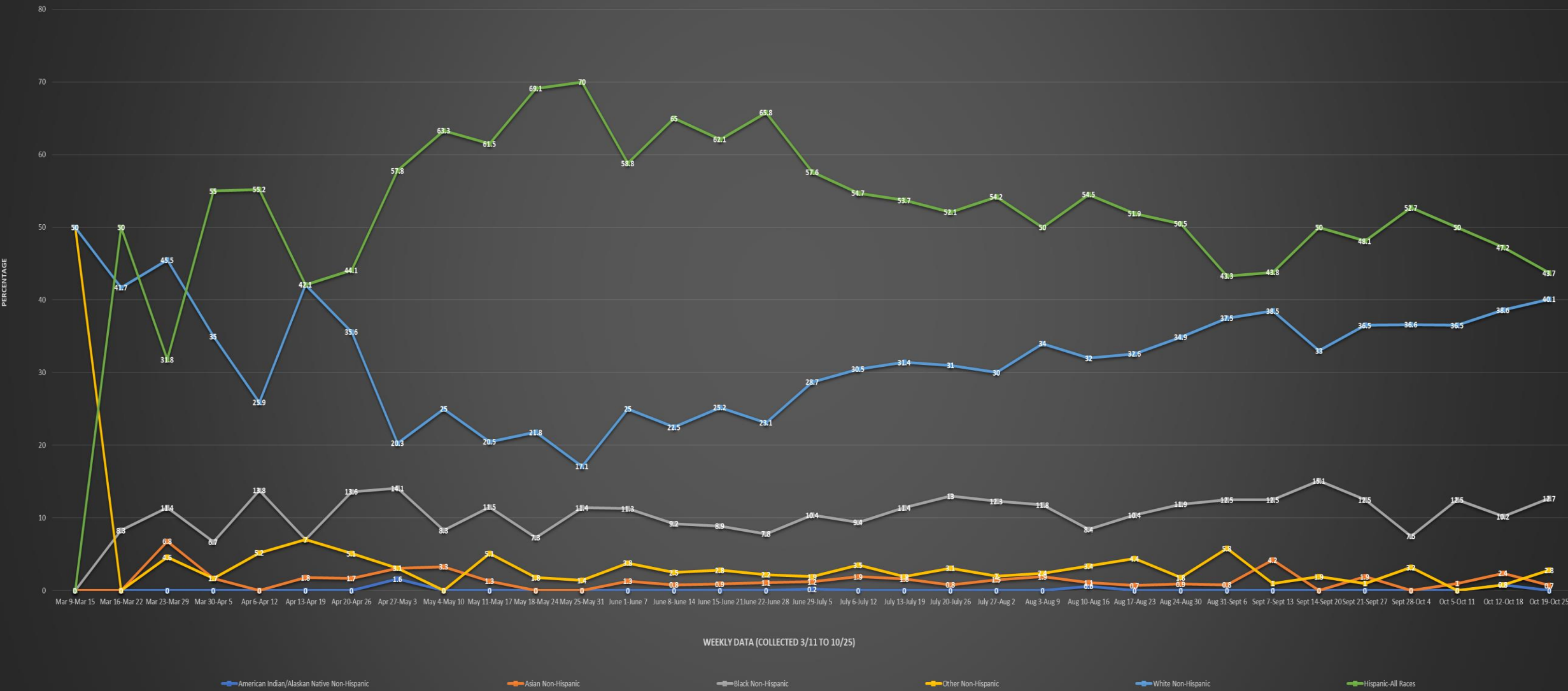
Daily COVID-19 Hospitalizations in the Austin-Round Rock MSA



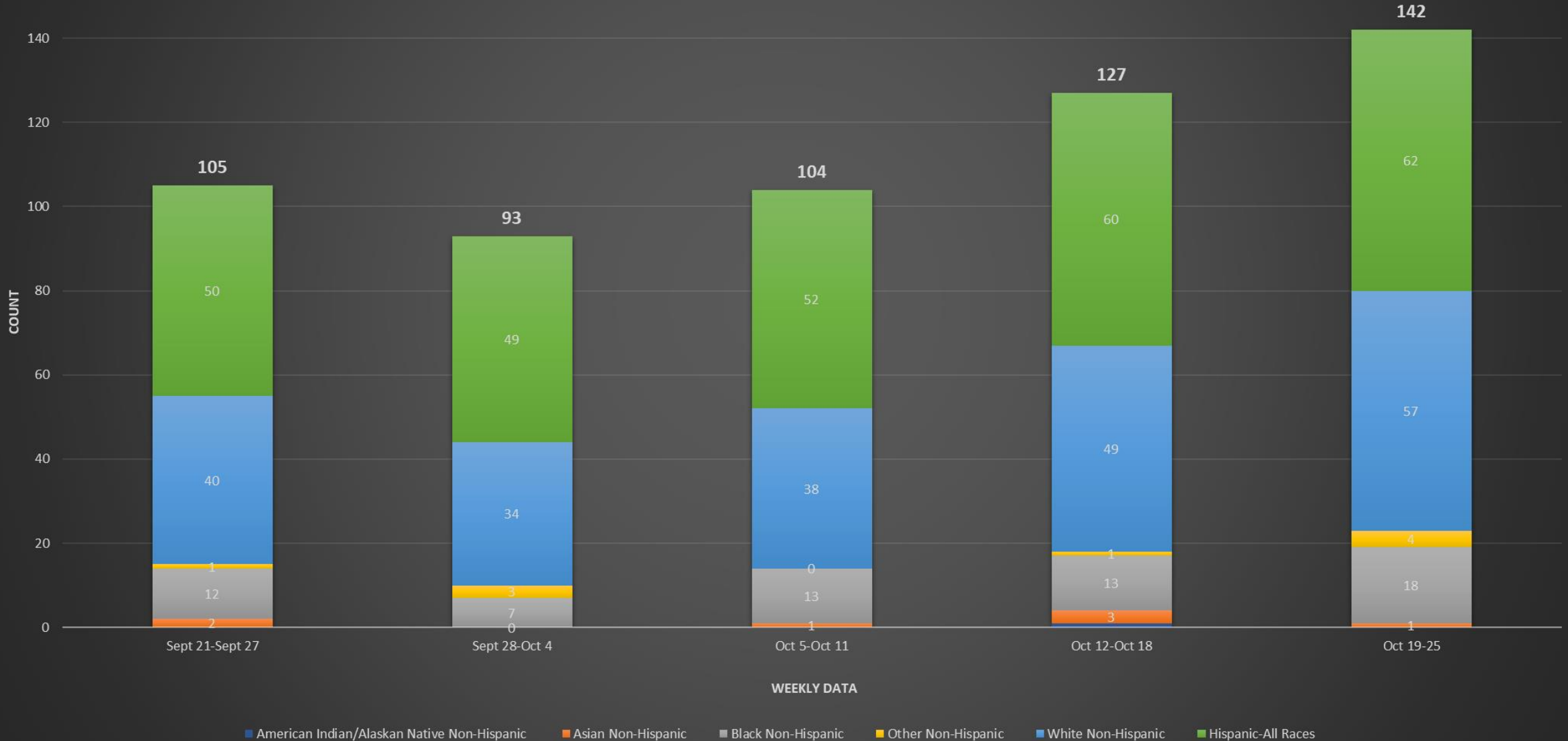
Daily COVID-19 ICU patients in the Austin-Round Rock MSA



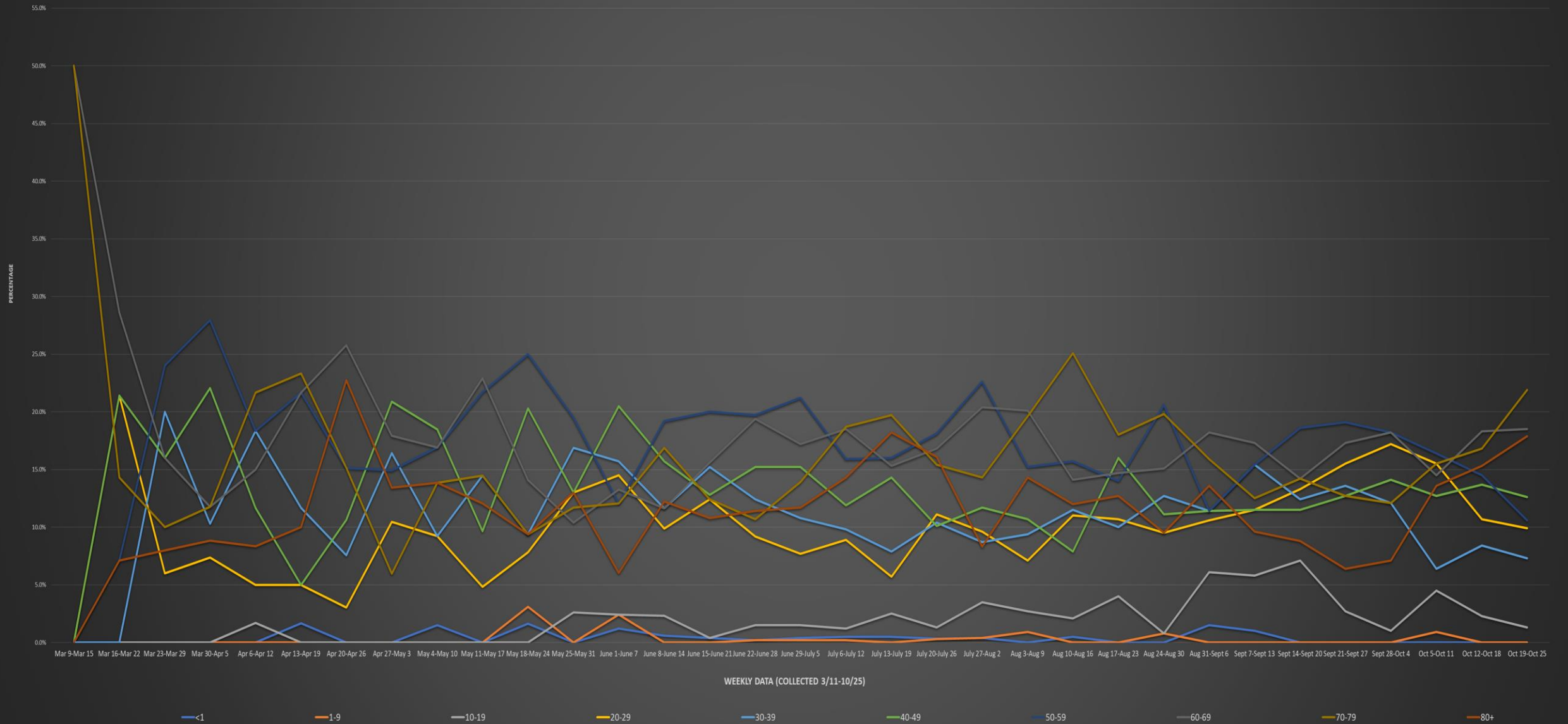
City of Austin - Travis County COVID-19 Hospitalization by Race & Ethnicity (Austin MSA)



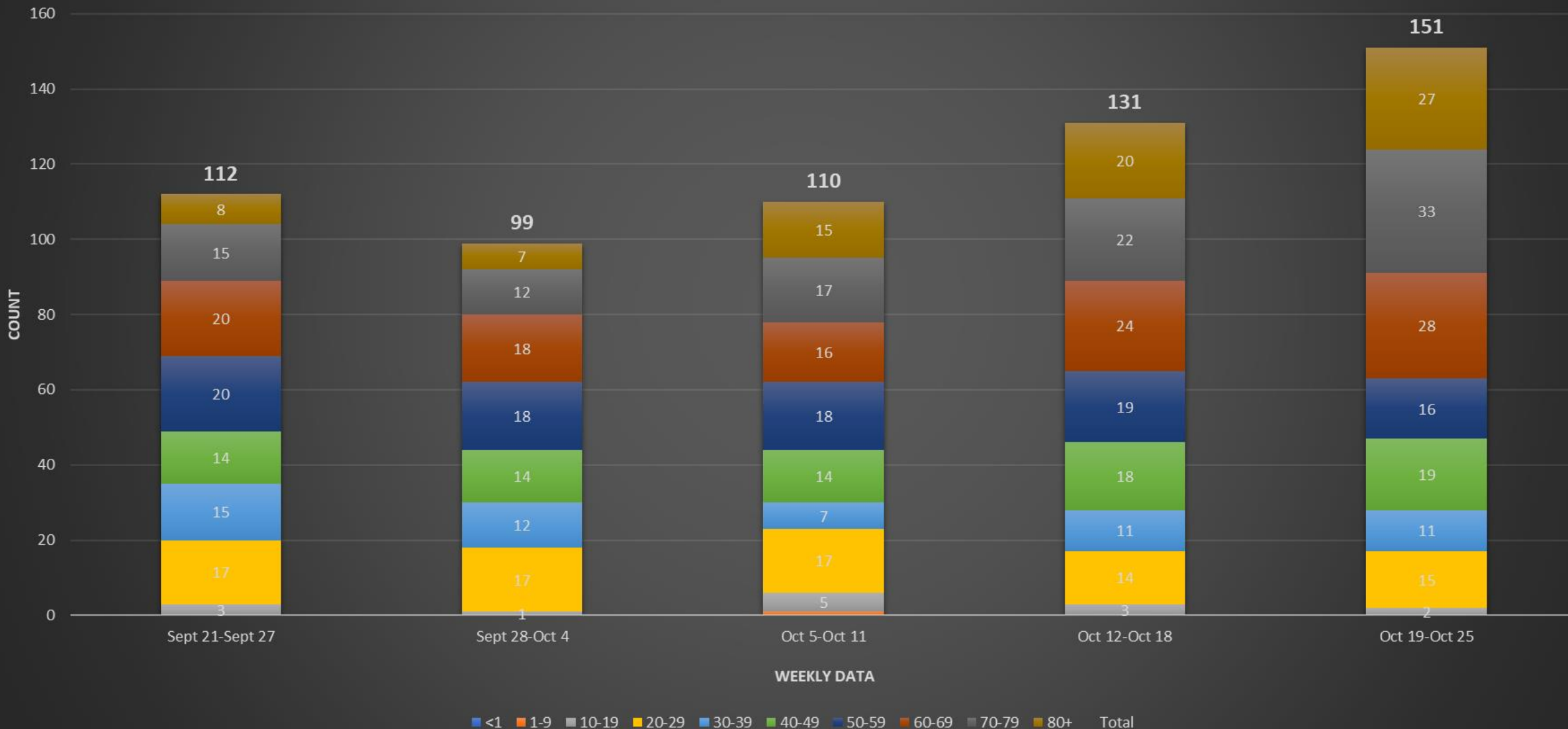
City of Austin - Travis County COVID-19 Count of Weekly Hospitalizations by Race/Ethnicity (Austin MSA)



City of Austin - Travis County COVID-19 Hospitalization by Age Group (Austin MSA)

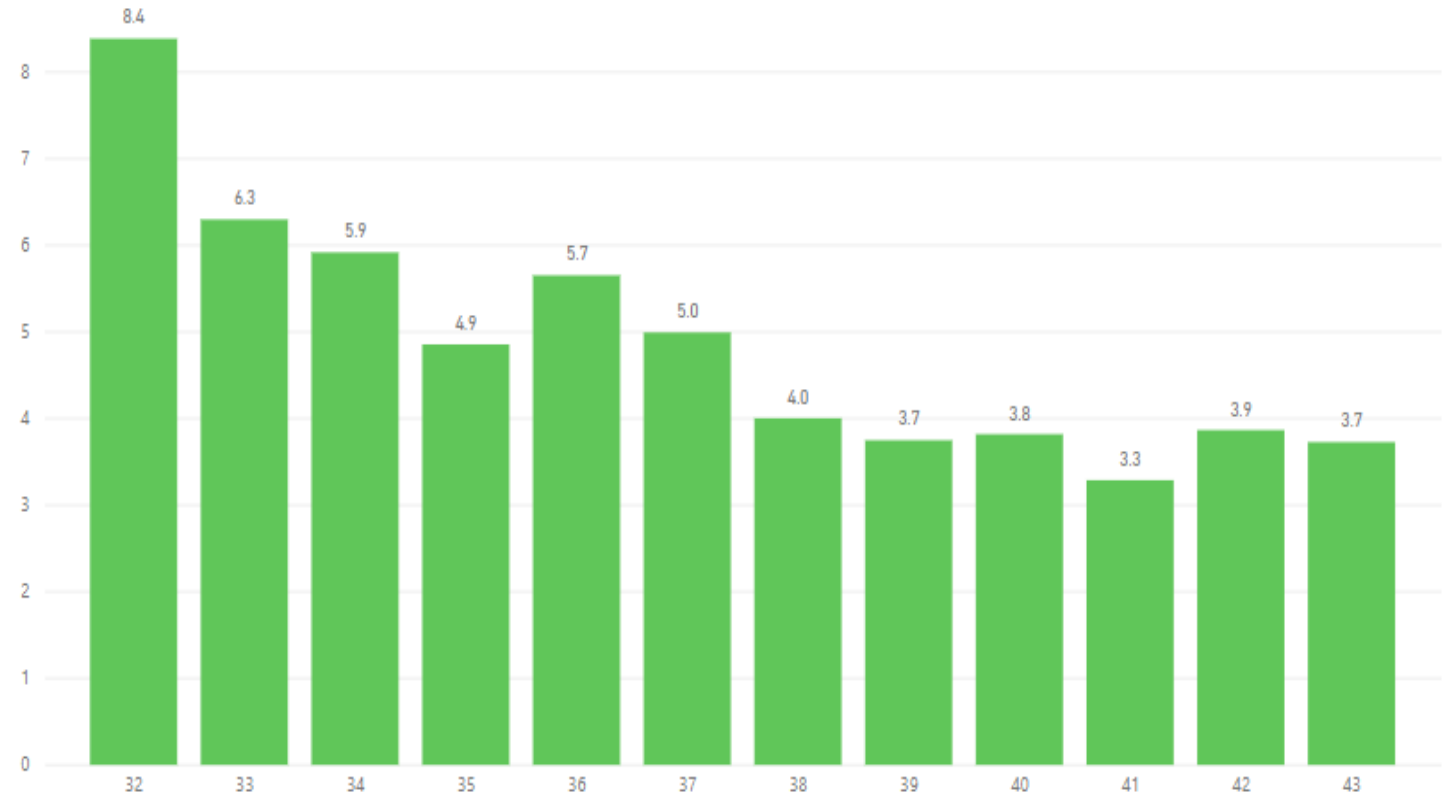


City of Austin - Travis County COVID-19 Count of Weekly Hospitalizations by Age Group (Austin MSA)



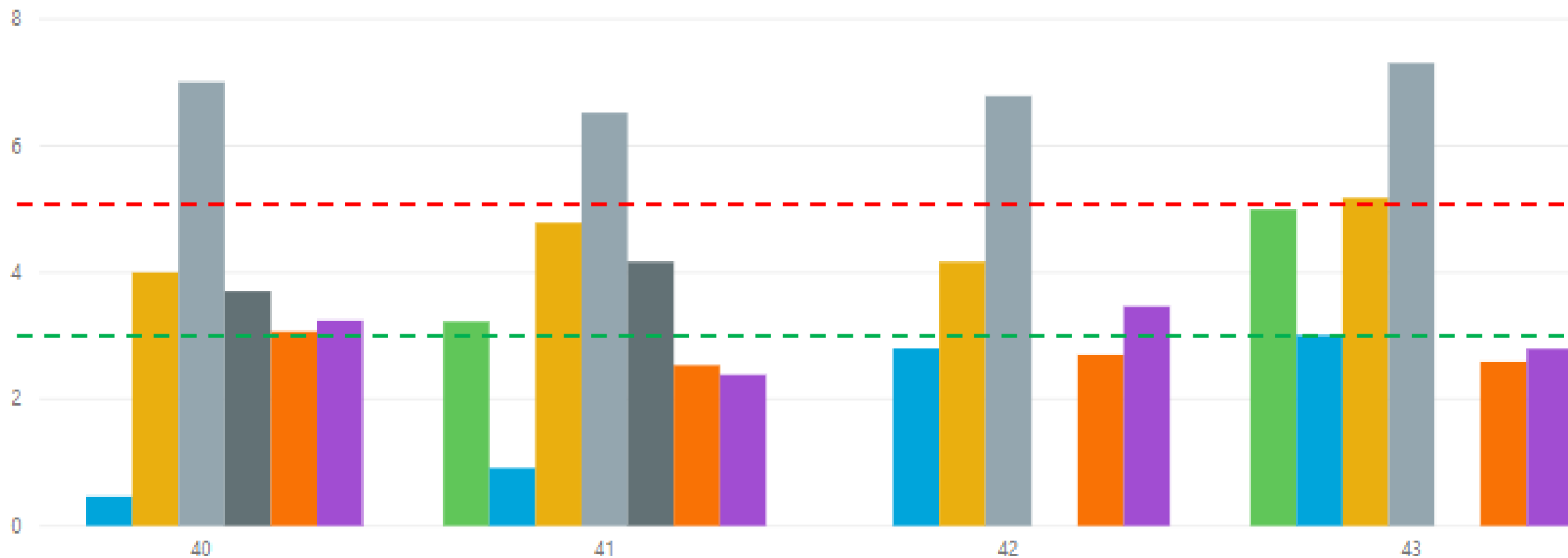
Travis County COVID-19 Percent Positive by Week

Percent Positive by Test Collection Week - Last 12 Weeks



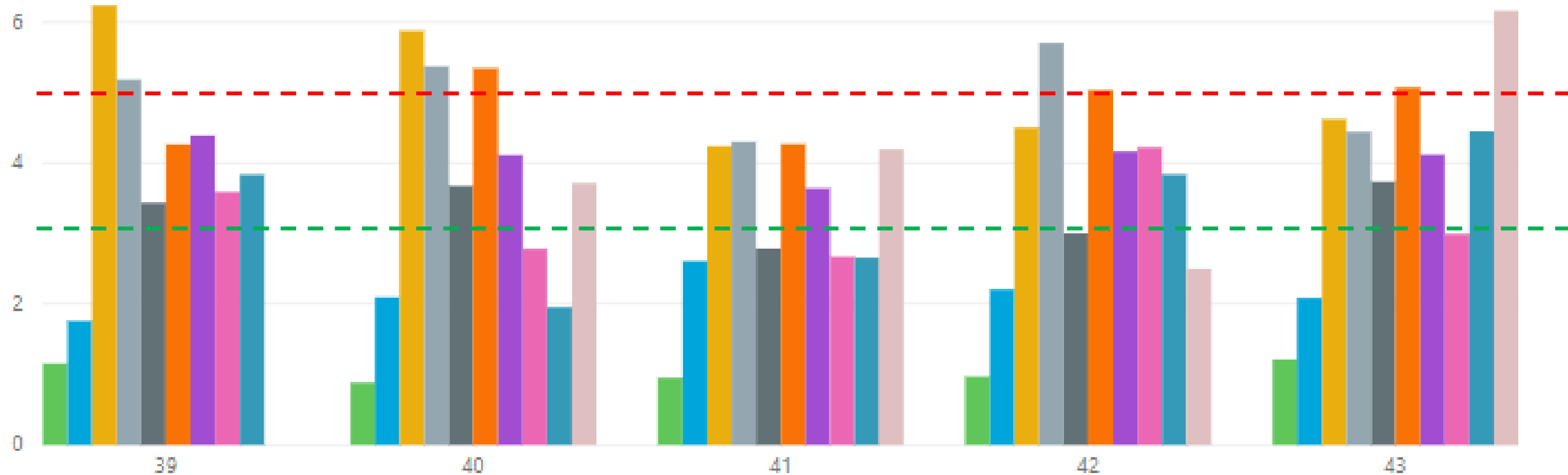
Percent Positive By Race/Ethnicity - Last Four Weeks

Race/Ethnicity
 ● American Indian or Alaska Native
 ● Asian
 ● Black or African American
 ● Hispanic or Latino
 ● Native Hawaiian or Other Pacific Islander
 ● Other
 ● White



Percent Positive By Age Group and Week - Last Four Weeks

Age Group at Collection ● <1 ● 01-09 ● 10-19 ● 20-29 ● 30-39 ● 40-49 ● 50-59 ● 60-69 ● 70-79 ● 80+





Austin - Travis County COVID-19 Long Term Care Facility

For more information on COVID-19
visit:

Reported by Austin Public Health: Data
Refreshed: 10/23/2020



Arbor Terrace Lakeway (AL)

Cases within last 14

days: 0

Cases within last

28 days: 0

Arden Courts (AL)

Cases within last 14

days: 0

Cases within last

28 days: 0

Auberge at Bee Caves (AL)

Cases within last 14

days: 0

Cases within last

28 days: 0

Auberge at Onion Creek (AL)

Cases within last 14

days: 1

Cases within last

28 days: 3

Austin Healthcare and Rehab (NH)

Cases within last 14

days: 1

Cases within last

28 days: 1

Cases

New Cases Within Last 14
Days

1,731

40

New Cases Within Last
28 Days

50

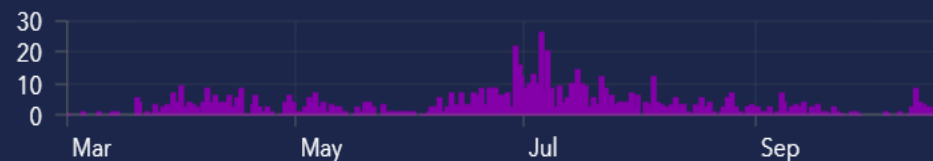
Deaths

195

Resident Cases for All Travis County LTCFs



Staff Cases for All Travis County LTCFs



Resident/Staff Epi Curve

Cumulative Count, & Resources

Hover over segment to see details

Resident Ethnicity



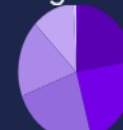
Resident Age Group



Staff Ethnicity



Staff Age Group



Resident Race



Resident Sex



Staff Race



Staff Sex



Demographics

Notes

COVID-19 Schools: Weekly Report 10/19-10/25

Self-Reported Cases by District:

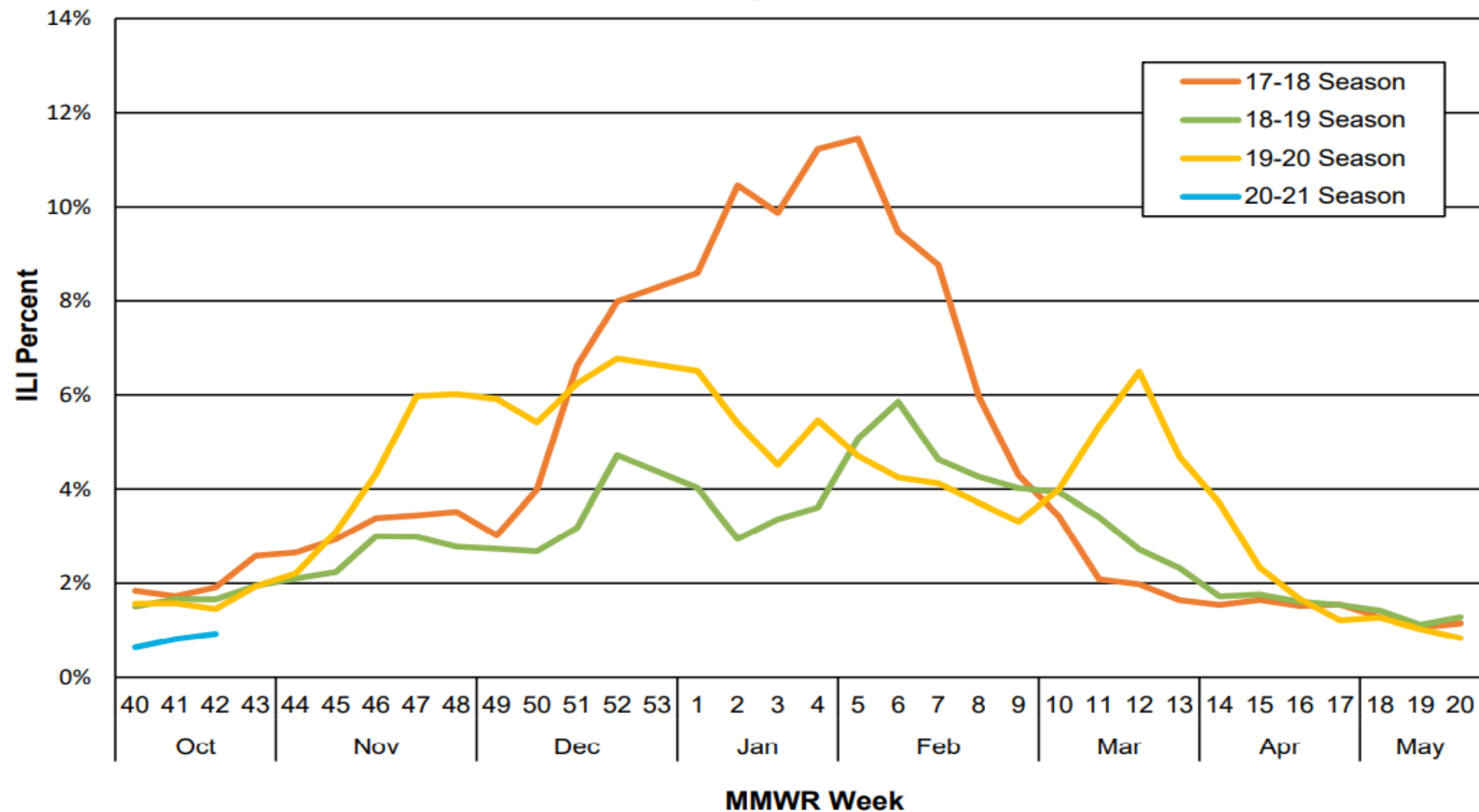
District	Student Cases	Staff Cases ¹	Other Cases ²
Austin ISD	5	9	1
Charter School	2	0	0
Del Valle ISD	1	0	0
<u>Eanes ISD</u>	4	2	0
Elgin ISD	0	1	0
Lake Travis ISD	1	3	0
Leander ISD	5	0	0
Pflugerville ISD	8	4	0
Private School	2	3	0
Round Rock ISD	4	2	0
Total	32	24	1

Weekly Influenza Surveillance

Table 1. Influenza Surveillance, Travis County Providers ^{4,5,6,7}

	MMWR Week 42	Season to Date
Influenza Tests Performed	287	678
Total Positive Influenza Tests	5	9
% Positive Influenza Tests	1.74%	1.33%
Positive Rapid Influenza A	2	3
Positive PCR Influenza A	0	0
Positive Rapid Influenza B	3	6
Positive PCR Influenza B	0	0
Positive Rapid Influenza A and B	0	0
Non-Differentiated Influenza	0	0

**Figure 4. TxS2 ILI Percentage Syndromic Surveillance Data,
Travis County: 2017-2021**



COVID-19: Risk-Based Guidelines

Recommended thresholds 7-day average hospital admits		Practice Good Hygiene	Maintain Social Distancing	Wear Facial Coverings	Higher Risk Individuals Aged 65+, diabetes, high blood pressure, heart, lung and kidney disease, immunocompromised, obesity			Avoid Gatherings	Avoid Non-Essential Travel	Avoid Dining/ Shopping	Workplaces Open
		Stay Home If Sick			Avoid Gatherings	Avoid Non-Essential Travel	Avoid Dining/ Shopping				
		Avoid Sick People									
0	Stage 1	●			Greater than 25		Except with precautions	Gathering size TBD			All businesses
< 10	Stage 2	●	●	●	Greater than 10		Except as essential	Greater than 25			Essential and reopened businesses
10 - 39	Stage 3	●	●	●	Social and greater than 10	●	Except as essential	Social and greater than 10			Essential and reopened businesses
40 - (70 to 123)*	Stage 4	●	●	●	Social and greater than 2	●	Except as essential	Social and Greater than 10	●	Except expanded essential businesses	Expanded essential businesses
> (70 - 123)* (depending on rate of increase)	Stage 5	●	●	●	Outside of household	●	Except as essential	Outside of household	●	Except as essential	Essential businesses only

* The exact hospitalization average trigger will depend on the rate of increase. A faster increase in the daily average will trigger stage 5 risk recommendations when the number reaches the lower end of this range.

Use this color-coded alert system to understand the stages of risk. This chart provides recommendations on what people should do to stay safe during the pandemic. Individual risk categories identified pertain to known risks of complication and death from COVID-19. This chart is subject to change as the situation evolves.

