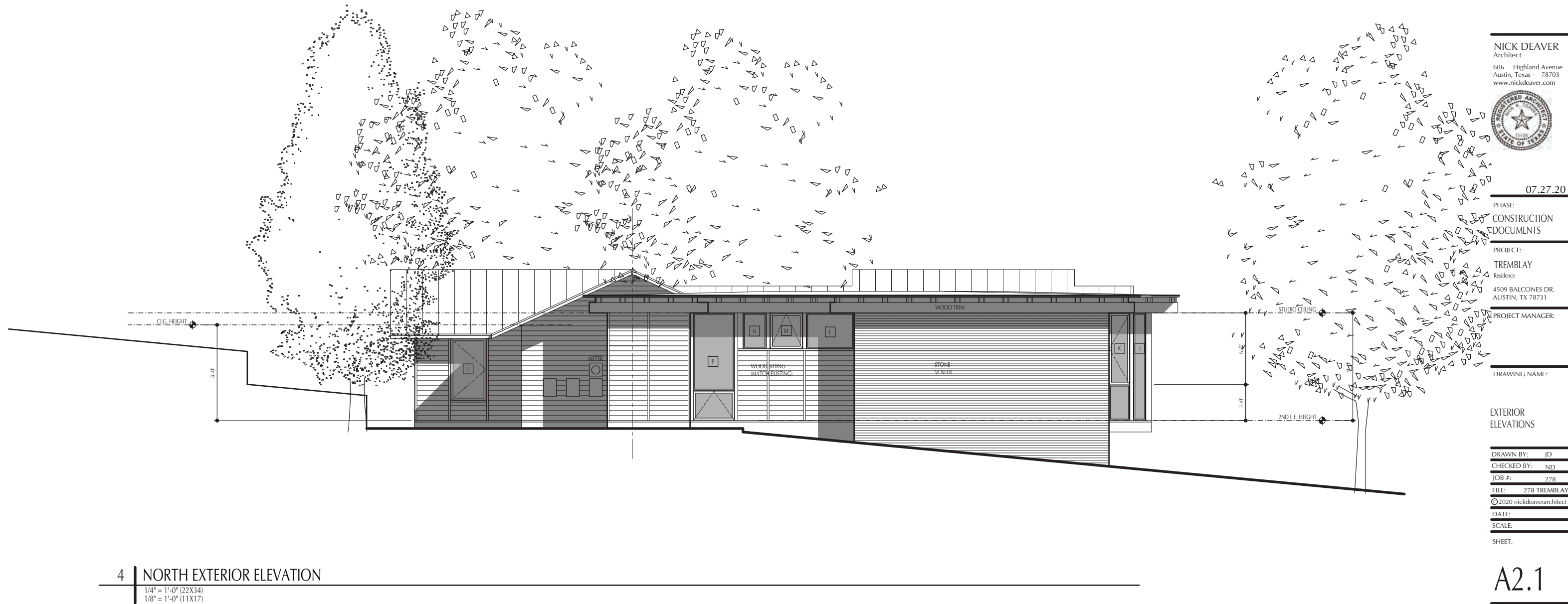




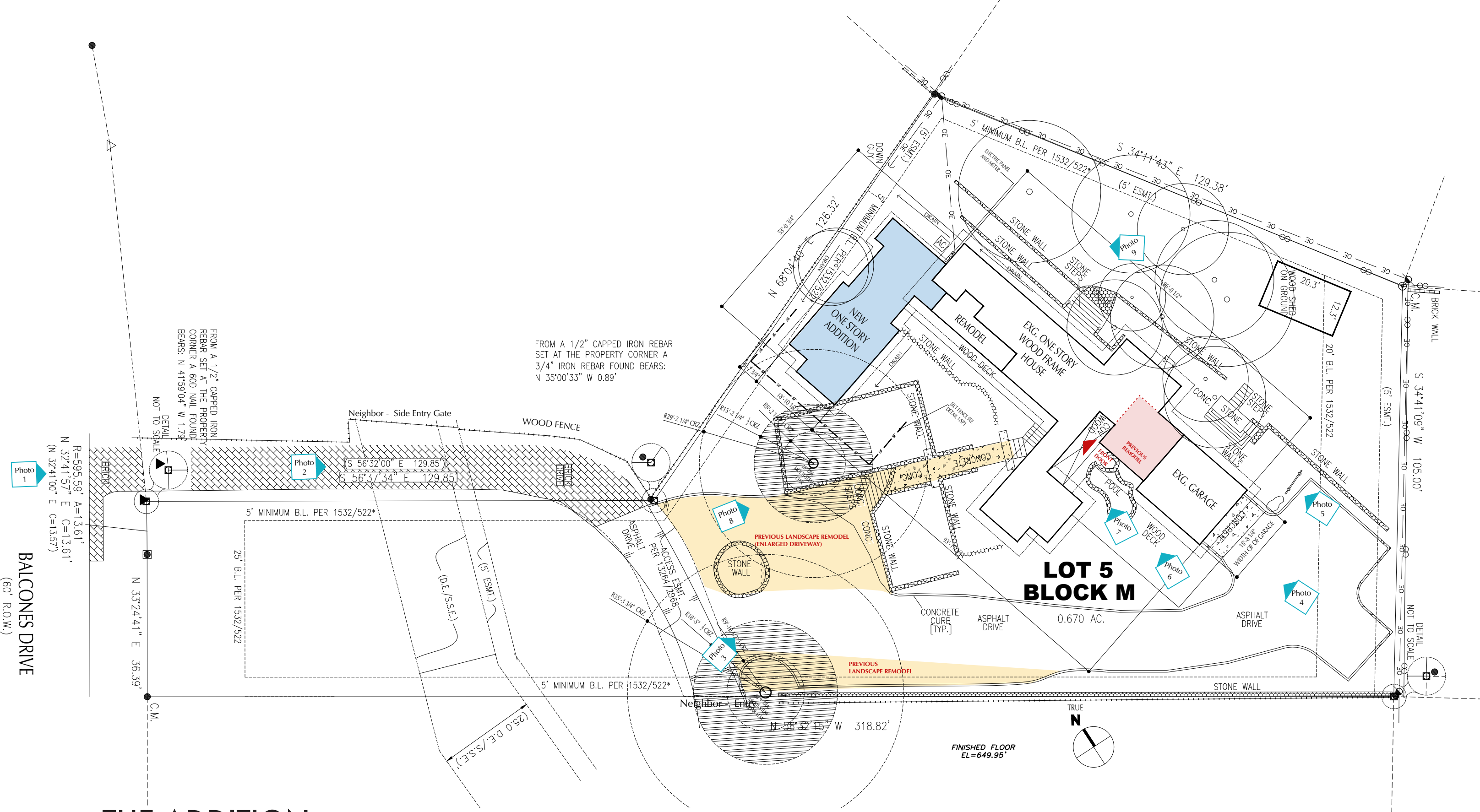
THE ADDITION

- Has a limestone base that ties into the fabric of the landscape
- Consists of a new floating wood box and roof structure that references the original house and is *"...a balance between differentiation and compatibility to maintain the historic character and the identity of the building being enlarged."*
- Is *"compatible with the massing, size, scale, and design of the historic building while differentiated from the historic building."*
- Provides a minimal connection to the original house
- Is *"designed and constructed so that the essential form and integrity of the historic building would remain if the addition were to be removed in the future."*



THE ADDITION

- Overhead electric service at narrow north end of original cruciform plan
- The grade at the east side of the house is at eave height eliminating the possibility of an addition to the east side that is not underground.



THE ADDITION (Blue)

- A series of high retaining walls on the east side of the house (approx. eave height)
- Near the service utilities, opposite the entry to the house and a logical extension of the cruciform plan