



# Creation & Implementation of an Equity Assessment Tool

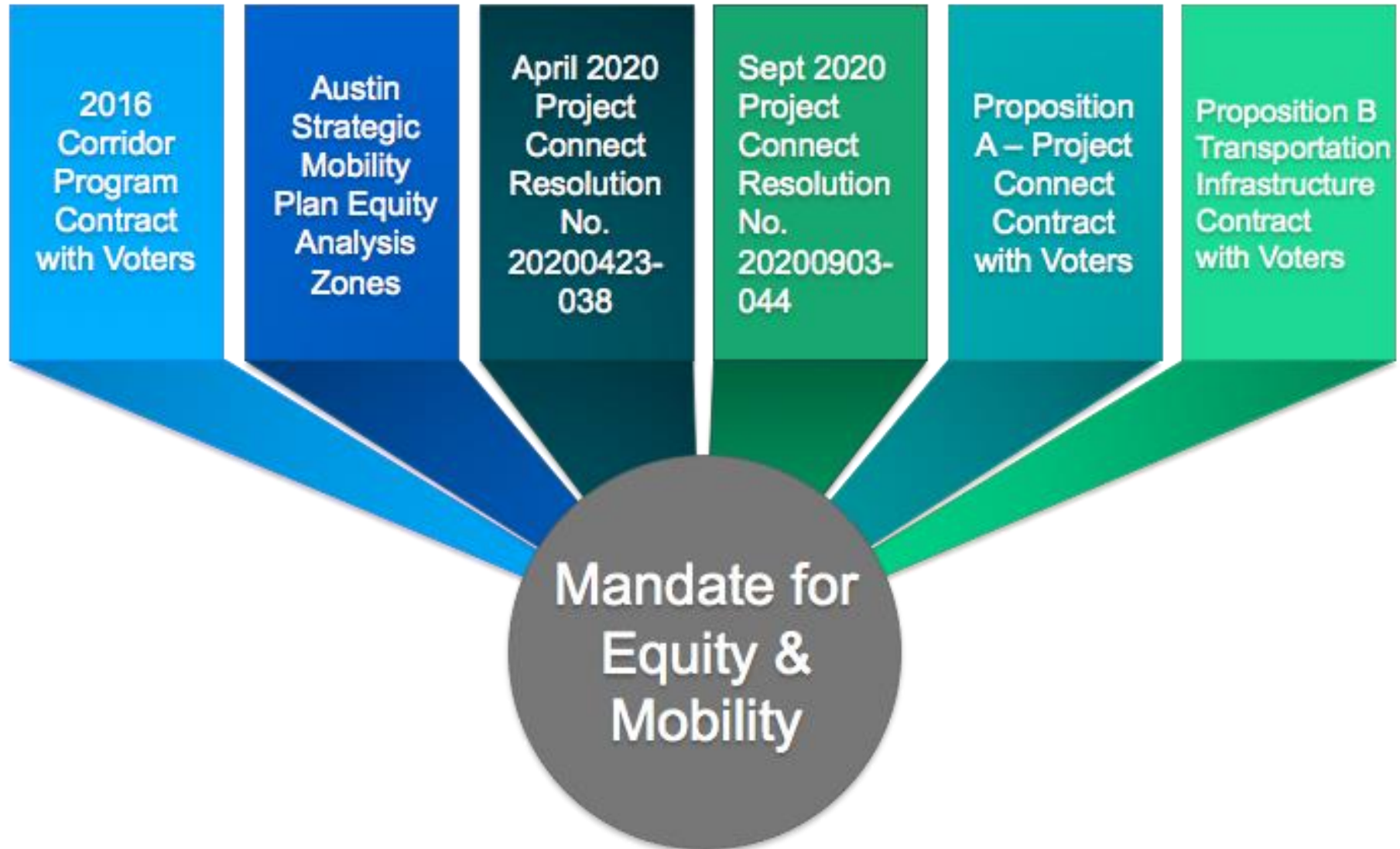
City of Austin: Equity Office, Innovation Office, Resilience, Housing and  
Planning Department, Transportation Department



# Agenda

- **Equity Assessment Tool – Policy Direction**
- **Team Structure**
  - City of Austin: Equity Office, Innovation Office, Resilience, Housing and Planning Department, Transportation Department
- **Work to Date**
  - Environment to Advance Equity Defined
  - Housing & Planning Department Displacement Prevention Division
- **Next Steps**
  - Project Connect Equity Assessment Tool – Scope Development
  - Consultant Selection
  - Equity Office - Equity Action Team Discussion in December
  - Neighborhood Stabilization Strategy Tool and other model tools research/review

# Equity & Mobility – Interrelated Policies



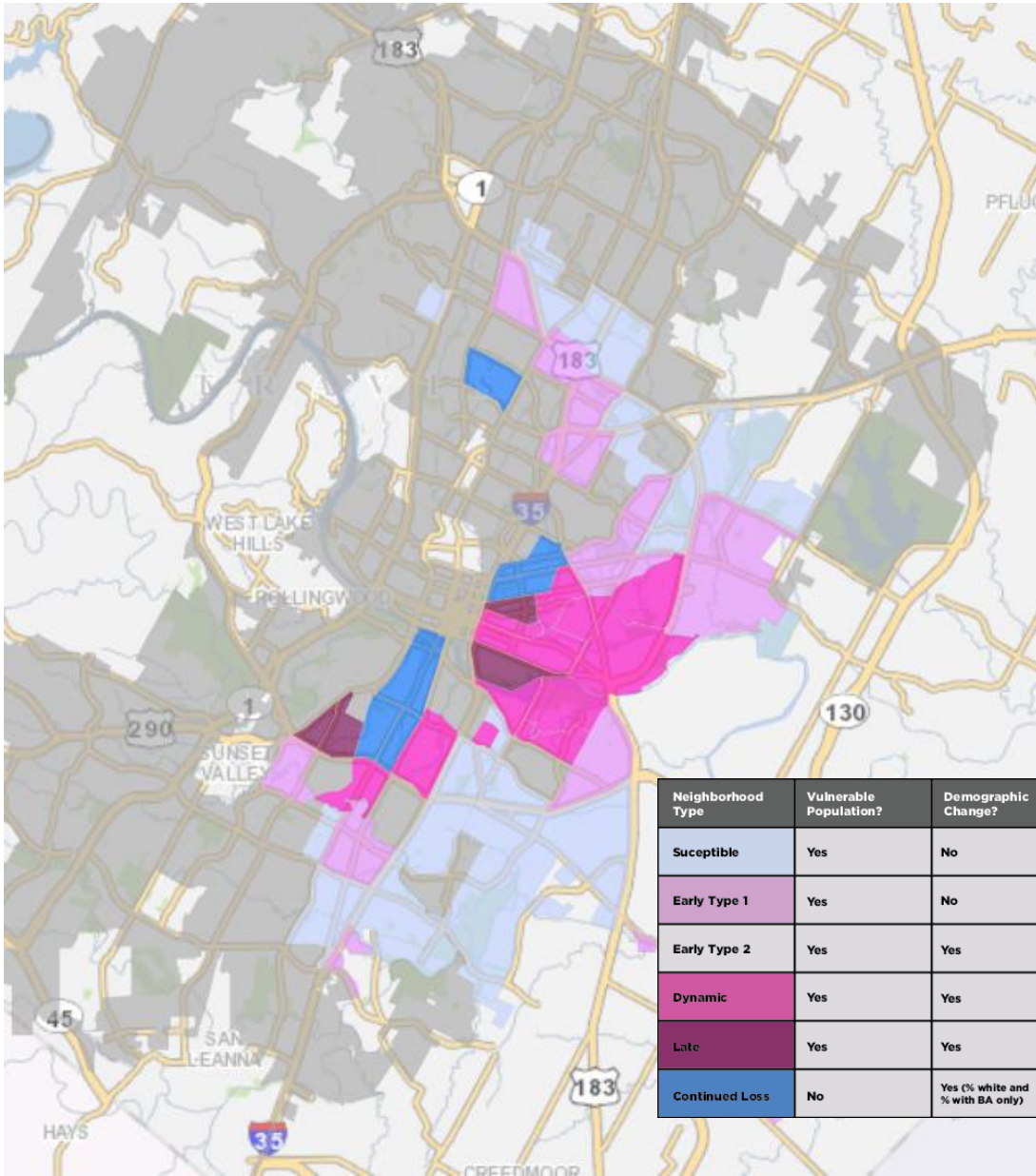
## 2016 Bond Program - Corridors

- ... also makes allowances for: i) **preservation of existing affordable housing and local businesses** on the corridors, and opportunities for development of **new affordable housing** along the corridors, including, but not limited to, the use of community land trusts, tax increment finance zones along corridors, homestead preservation zone tools, revisions to the S.M.A.R.T. Housing Program...
- ... emphasize making corridors livable, walkable, safe, and transit-supportive, and aligned with the principles and metrics in the Imagine Austin Comprehensive Plan, with goals of reducing vehicle miles traveled, increasing transit ridership and non-vehicular trips, and promoting healthy, **equitable, and complete communities** as growth occurs on these corridors;

# 2019 ASMP Chapter 6 – Equity

## Action Item #200 | Equity Analysis Zones

Identify a **framework to designate geographic zones**...criteria should consider **race, income, car-ownership, educational attainment, housing tenure, transit availability, language spoken at home, age, disability status**, and other factors to help **focus efforts on historically underrepresented and underserved communities**



Source: 2018 UT Austin Uprooted Report

## April 2020 Project Connect Resolution

- **Resolution No. [20200423-038](#)**
  - Provide recommendations to prevent transportation investment-related displacement by aligning current policies, services, programs and resources
  - Recommendations should ensure that people of different incomes can benefit from transportation investments
  - Recommendations should also include options for financing additional strategies and solutions
  
- **[July 21, 2020 Staff Response:](#)**
  - Coordination with NEPA Process
  - Create an Equity Assessment Tool
  - Create an interdepartmental/interagency group to coordinate investments in programming near existing planned transit
  - Assuring existing affordable housing programming and additional funds leverage each other



# 2020 Proposition A: Project Connect Contract with Voters

## The City shall:

- within six-months of voter approval, provide a process for the **creation of neighborhood-level strategies** with community members and organizations
- **create an Equity Assessment Tool** to analyze, on a neighborhood level:
  - (1) potential, unintended, or undesirable effects of the transit investment that contribute to difficulties for people to remain living in an area, such as gentrification and displacement, and
  - (2) opportunities to make investments to build economic mobility for residents
- The tool would help focus any allocated anti-displacement funding and help dismantle structural racial inequity and create equitable outcomes for all to eliminate direct, indirect and cultural displacement of neighborhoods



## 2020 Proposition A: Project Connect Contract with Voters

### The City shall:

- **create with the community, neighborhood-level prevention and mitigation strategies** based on the Equity Assessment Tool, including
  - (1) recommendations that leverage other programs to create a connected effort for anti-displacement strategies, and
  - (2) recommendations for funding proposals and implementation of identified strategies
- **create a performance dashboard** to track progress on strategies identified for implementation for each neighborhood





## 2020 Proposition A: Project Connect Contract with Voters

### Capital Metro shall:

- serve as the FTA Project Sponsor and **conduct an environmental justice analysis** as required under National Environmental Policy Act (NEPA) for each eligible project and **provide recommendations** to Austin Transit Partnership for financing tools and strategies based on the NEPA review

### Austin Transit Partnership shall:

- **develop proposals** on an ongoing basis, based on the recommendations from the City and Capital Metro, and provide a budget for approval by City Council and the Capital Metro Board
- enter into interlocal agreements and/or grant agreements with the City to timely develop and implement anti-displacement strategies



## September 2020 Project Connect Resolution

- Resolution No. [20200903-044](#)
  - Work with impacted neighborhoods in the creation of neighborhood-level anti-displacement strategies and priorities
  - Identification and tracking of Key Performance Indicators (KPI) related to equity and displacement
  - Establish KPI triggers that signal the need for a posted Council discussion and public comment on the status of equity and anti-displacement strategies associated with Project Connect

## 2020 Proposition A: Project Connect

- Provide \$300,000,000 for (1) acquiring real property, and (2) financing tools and other anti-displacement strategies related to the implementation of Project Connect, such as:
  - construction or development of new affordable housing;
  - preservation, repair, and rehabilitation of existing affordable housing;
  - financial assistance for home ownership;
  - home repair;
  - rental subsidies;
  - right-to-return assistance that grants current tenants of affordable housing the option to lease a unit of comparable affordability and size following completion of rehabilitation of affordable housing;
  - or other strategies that build economic mobility opportunities for residents along the transit corridors and increase transit-supportive economic development and ridership

## 2020 Proposition B: Transportation Infrastructure

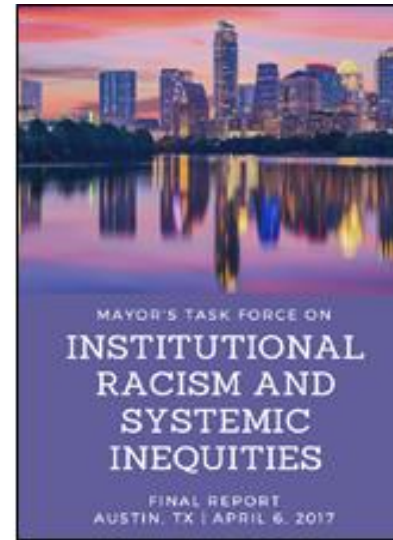
- Develop recommendations for implementation of transportation infrastructure proposals in manner that:
  - **Prioritizes investments in traditionally underserved communities, low-income communities, and other vulnerable communities; and anticipates unintended consequences** that may disproportionately affect historically underserved and underrepresented populations and proactively mitigates these effects
  - Existing project prioritization criteria for all programs identified in this resolution should be reevaluated and, where necessary, modified to further **prioritize equitable outcomes**

## Work to Date

- Anti-displacement recommendations reviewed
- 15 Strategic Displacement Prevention Priorities established and implemented
- Neighborhood Strategies Stabilization Tool created
- Affordable Housing + Transit Affordable Housing Map Series created
- Displacement Prevention Division created in the newly merged Housing and Planning Department
  - Tenant Stabilization
  - Community Preservation
  - Transportation Investments & Displacement Prevention Analysis

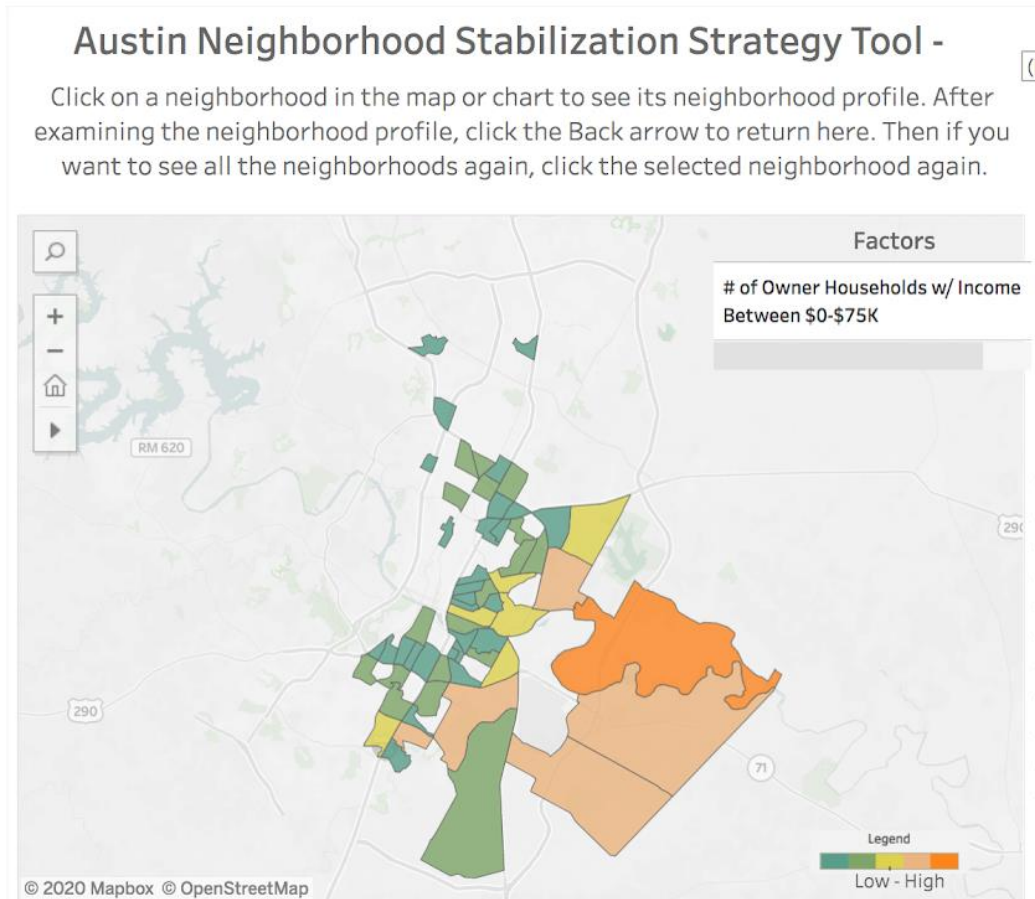
# Work to Date

## Anti-displacement Recommendations Reviewed

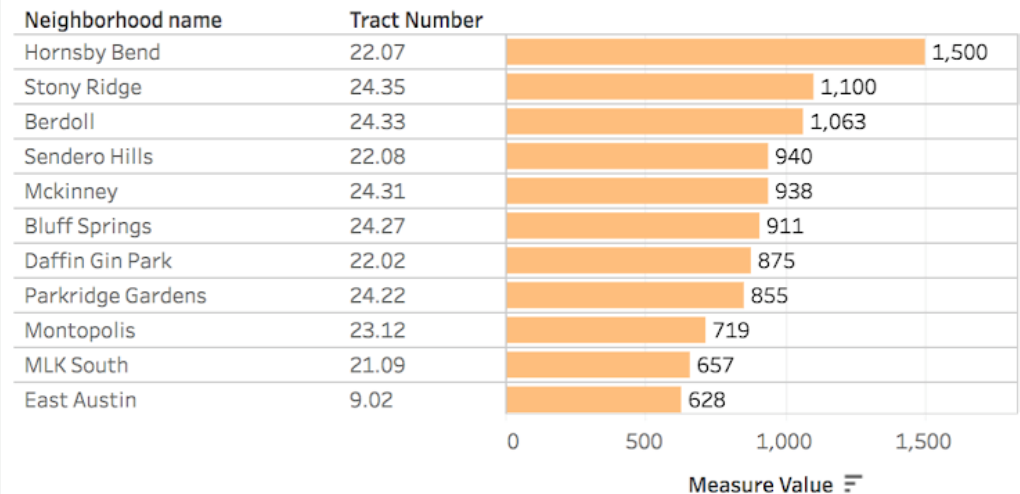


# Work to Date

## Neighborhood Stabilization Strategy Tool Developed



Help Staff/Policy Makers/Advocates to Assess Neighborhood Demographics & Susceptibility to Gentrification



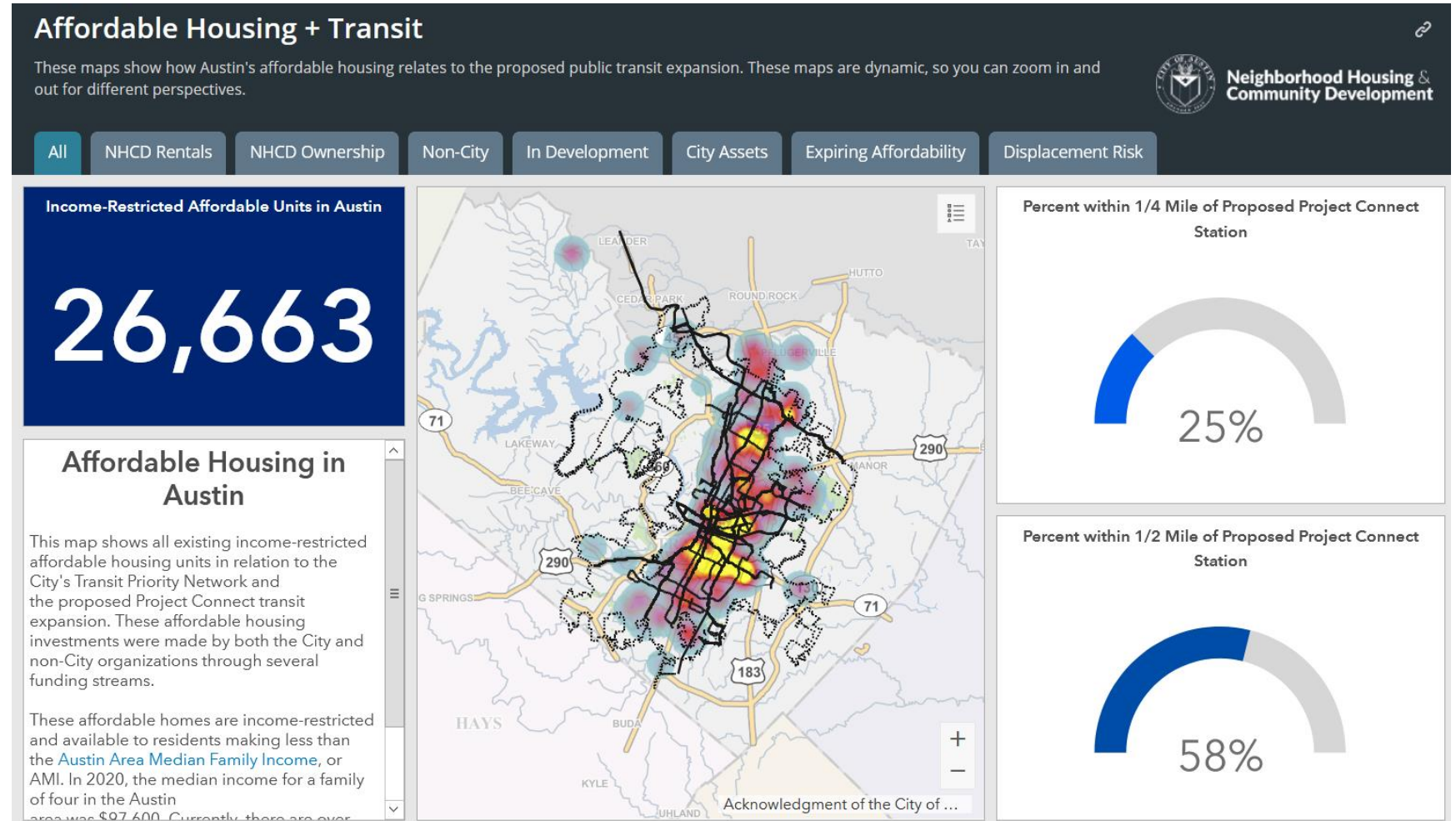


# Work to Date

## Affordable Housing + Transit Affordable Housing Map Series Created

### [Affordable Housing + Transit Affordable Housing Map Series](https://austin.maps.arcgis.com/apps/MapSeries/index.html?appid=b689c16a4db143698166b57a7abb876e)

<https://austin.maps.arcgis.com/apps/MapSeries/index.html?appid=b689c16a4db143698166b57a7abb876e>





# Team Structure

## City of Austin Equity Assessment Tool Development Participating Departments:

- Equity Office
- Innovation Office
- Resilience
- Housing and Planning Department
- Transportation Department

## Environment to Advance Equity

For an equity scorecard or tool to be effective, it needs an environment conducive to receiving and using the data and information it yields, including:

- 1) Centering on the values of and having a shared mandate for racial equity,
- 2) Rebalancing power and decision-making structures, and
- 3) Accountability to those most directly impacted by displacement pressures



## Next Steps

**Direction:** Within six months of voter approval, provide a process for the creation of neighborhood-level strategies with **community members and organizations**

### ONGOING

- Coordinate with Project Connect National Environmental Policy Act (NEPA) Process

### FALL 2020

- Develop Equity Assessment Tool **Scope of Work** (for Consultant) in Collaboration with Community

### WINTER 2021

- Contract with entity to lead the process to **Co-create** the Tool with Community

# Next Steps

## SPRING 2021

- Define the process to **Implement** the use of the Tool with Community

## SUMMER 2021-PROJECT CONNECT COMPLETION

- **Implement** the Equity Assessment Tool with community
  - Work with impacted neighborhoods in the creation of neighborhood-level anti-displacement strategies and priorities
  - Identification and tracking of Key Performance Indicators (KPI) related to equity and displacement and establishment of KPI triggers

THANK YOU

