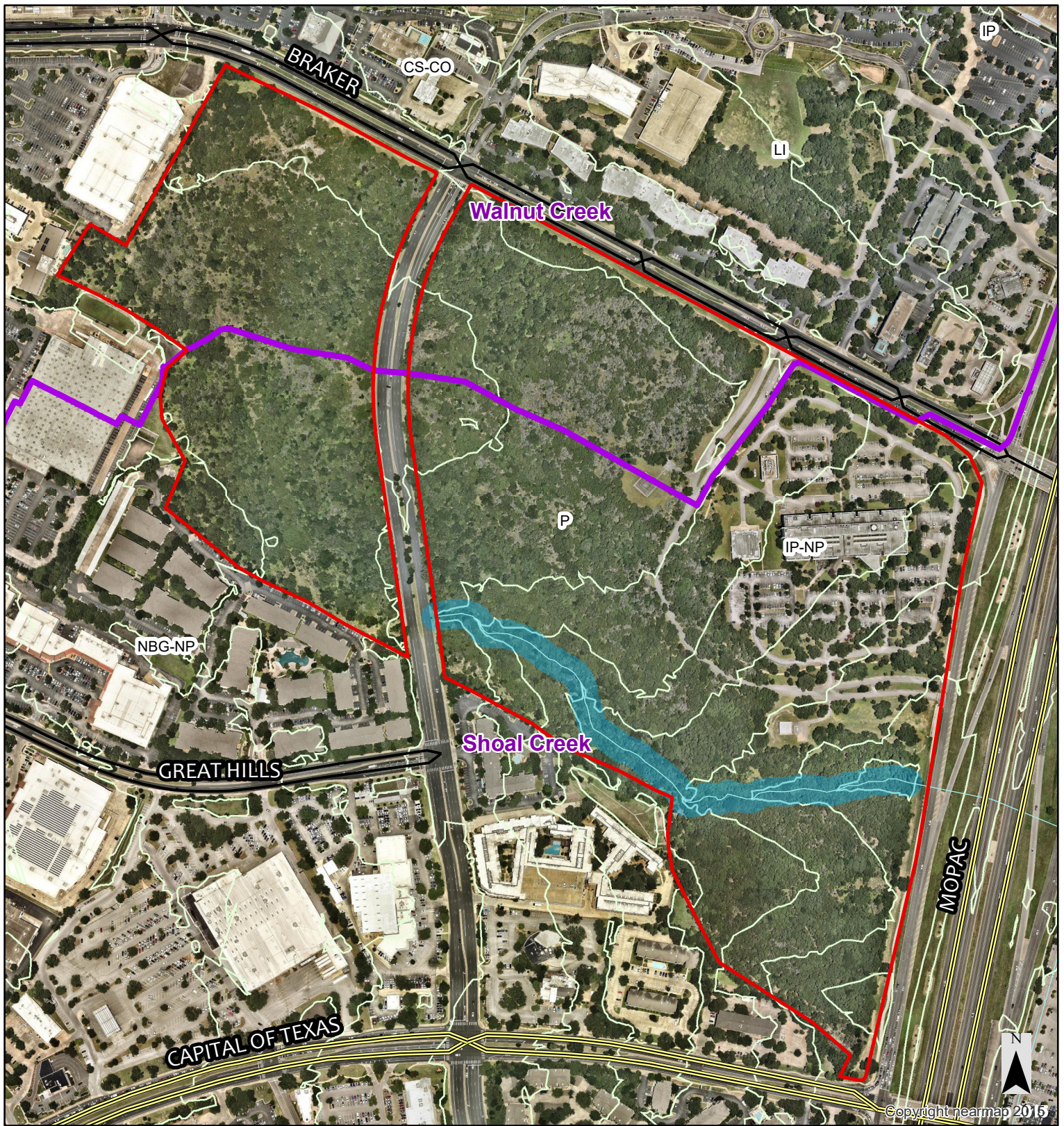


University of Texas Tracts

1 inch = 8,333 feet

Nov 19, 2020

 UT Tracts



West Pickle Research Campus

- Subject Property
- Watershed Boundaries
- Creeks
- Water Quality Transition Zone
- Critical Water Quality Zone
- Contours 2012 (10 foot)

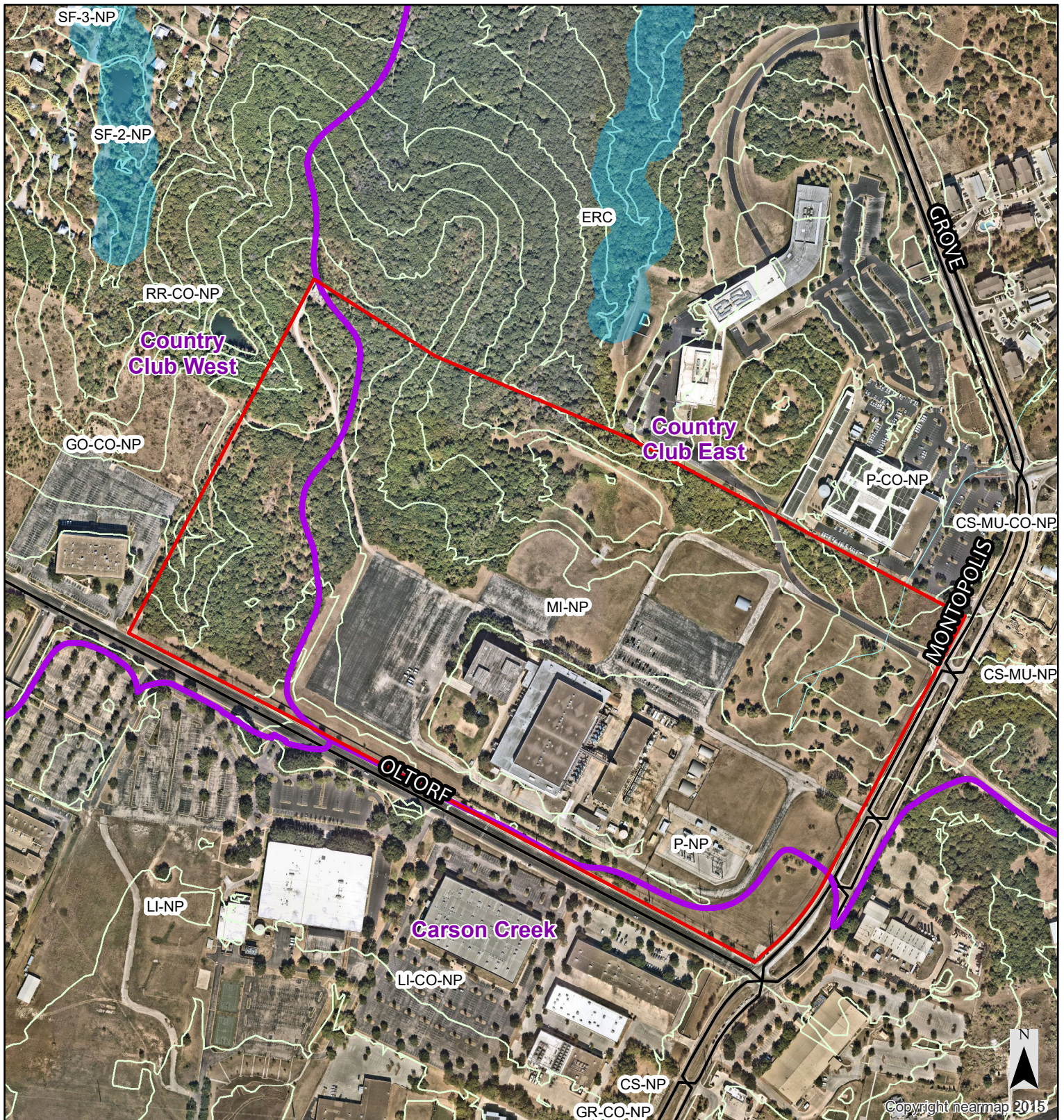
1 inch = 458 feet

Nov 19, 2020

This product is for informational purposes and may not have been prepared for or be suitable for legal, engineering, or surveying purposes. It does not represent an on-the-ground survey and represents only the approximate relative location of property boundaries.

This product has been produced by the City of Austin for the sole purpose of geographic reference. No warranty is made by the City of Austin regarding specific accuracy or completeness.

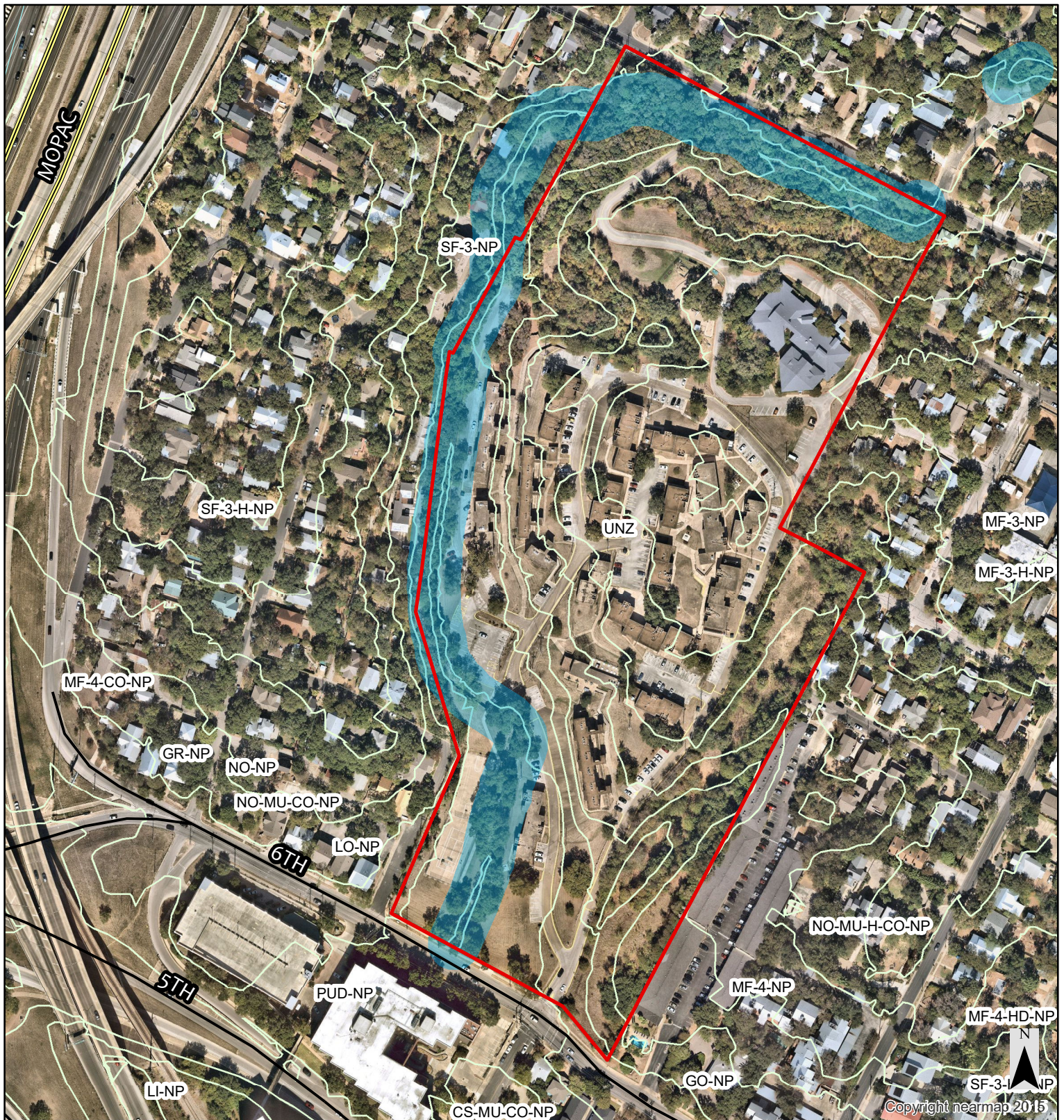
Created by Alyssa Parra



Sematech

- Subject Property
- Watershed Boundaries
- Creeks
- Water Quality Transition Zone
- Critical Water Quality Zone
- Contours 2012 (10 foot)

1 inch = 500 feet
Nov 19, 2020

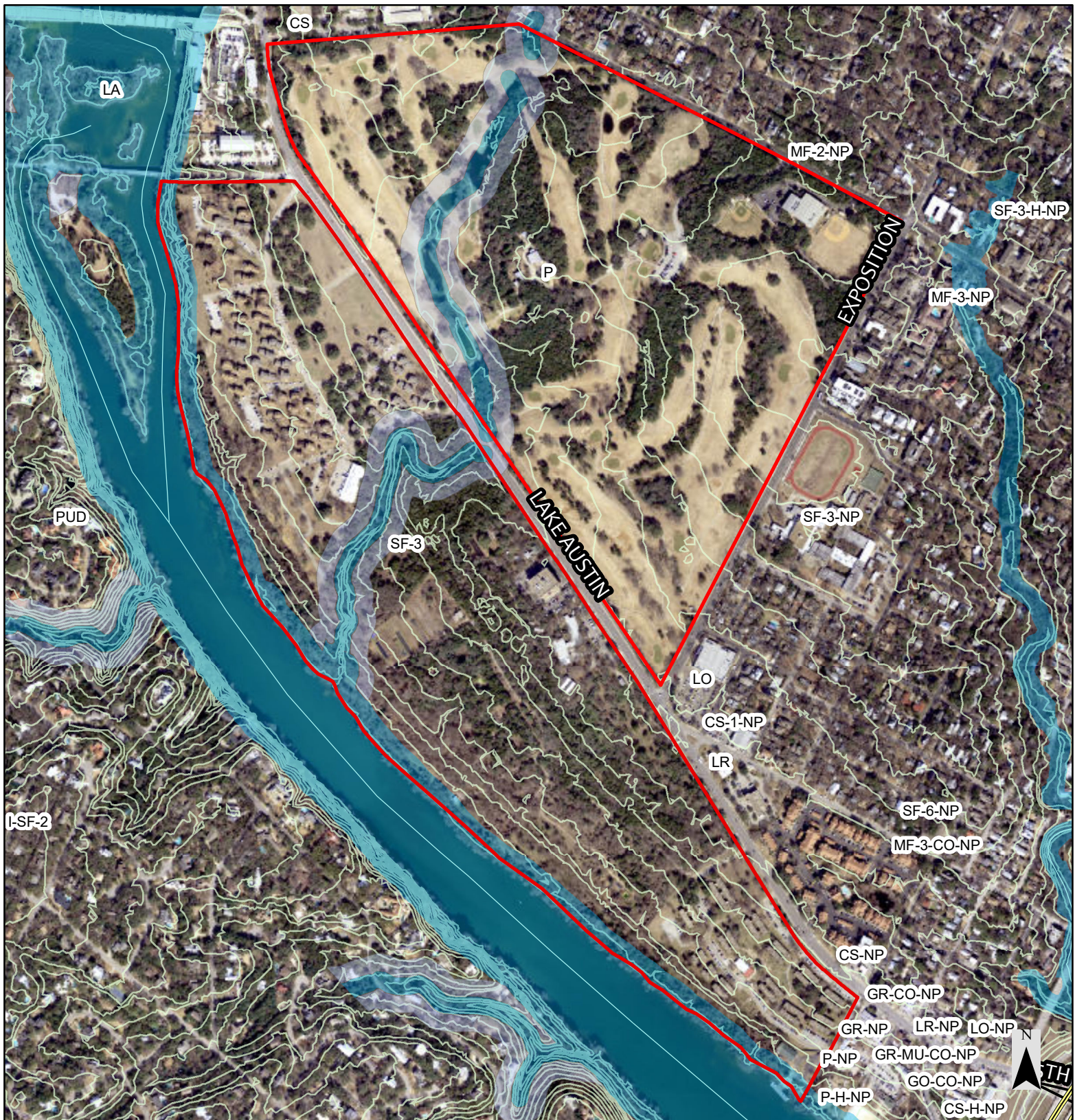


Gateway

1 inch = 250 feet

Nov 19, 2020

- Subject Property
- Creeks
- Water Quality Transition Zone
- Critical Water Quality Zone
- Contours 2012 (10 foot)



Brackenridge Tracts

1 inch = 750 feet

Nov 19, 2020

- Brackenridge Tracts
- Creeks
- Water Quality Transition Zone
- Critical Water Quality Zone
- Contours 2012 (10 foot)

This product is for informational purposes and may not have been prepared for or be suitable for legal, engineering, or surveying purposes. It does not represent an on-the-ground survey and represents only the approximate relative location of property boundaries.

This product has been produced by the City of Austin for the sole purpose of geographic reference. No warranty is made by the City of Austin regarding specific accuracy or completeness.

Created by Alyssa Parra