



# Disparity Study & MBE/WBE Program Overview

Construction  
Advisory Committee  
November 10, 2020

EDWARD CAMPOS, INTERIM DIRECTOR

# Objectives

2



PROVIDE A GENERAL  
OVERVIEW OF A DISPARITY  
STUDY



HIGHLIGHT THE SMBR  
PROGRAM



PROVIDE DETAILS REGARDING  
MBE/WBE REQUIREMENTS IN  
CONTRACTING

# What is a Disparity Study?

3

- ▶ Examines the procurement history of a government agency during a specific time frame to determine if there is statistical and or anecdotal information to suggest that the agency's past or current practices in the solicitation and award of contracts have been exclusionary, disparate or discriminatory in nature in the awarding of contracts to minority-owned, women-owned, and disadvantaged business enterprises (MWDBEs).

# Why is a disparity study necessary?

4



Legally required to continue the City's MBE/WBE Program.



Assists with making recommended improvements to the MBE/WBE Program.



Provides a legal defense regarding the City's established MBE/WBE Goals.

# What are the legal requirements of a disparity study?

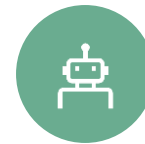
5



Collect and analyze data such as availability and utilization for both minority and non-minority firms as well as subs and primes.



Analyze multiple years of data. Courts recommend at least 3 to 5 years.



Analysis should be relative to specific industries: construction, professional services, commodities, etc.



Broad analysis for availability, capacity and willingness of firms to participate on contracts.



Disparity analysis should be inclusive of surrounding markets



Balanced analysis of past and present industry and contract discrimination



Collect and analyze anecdotal evidence

# Disparity Study Contact Information

## Study information

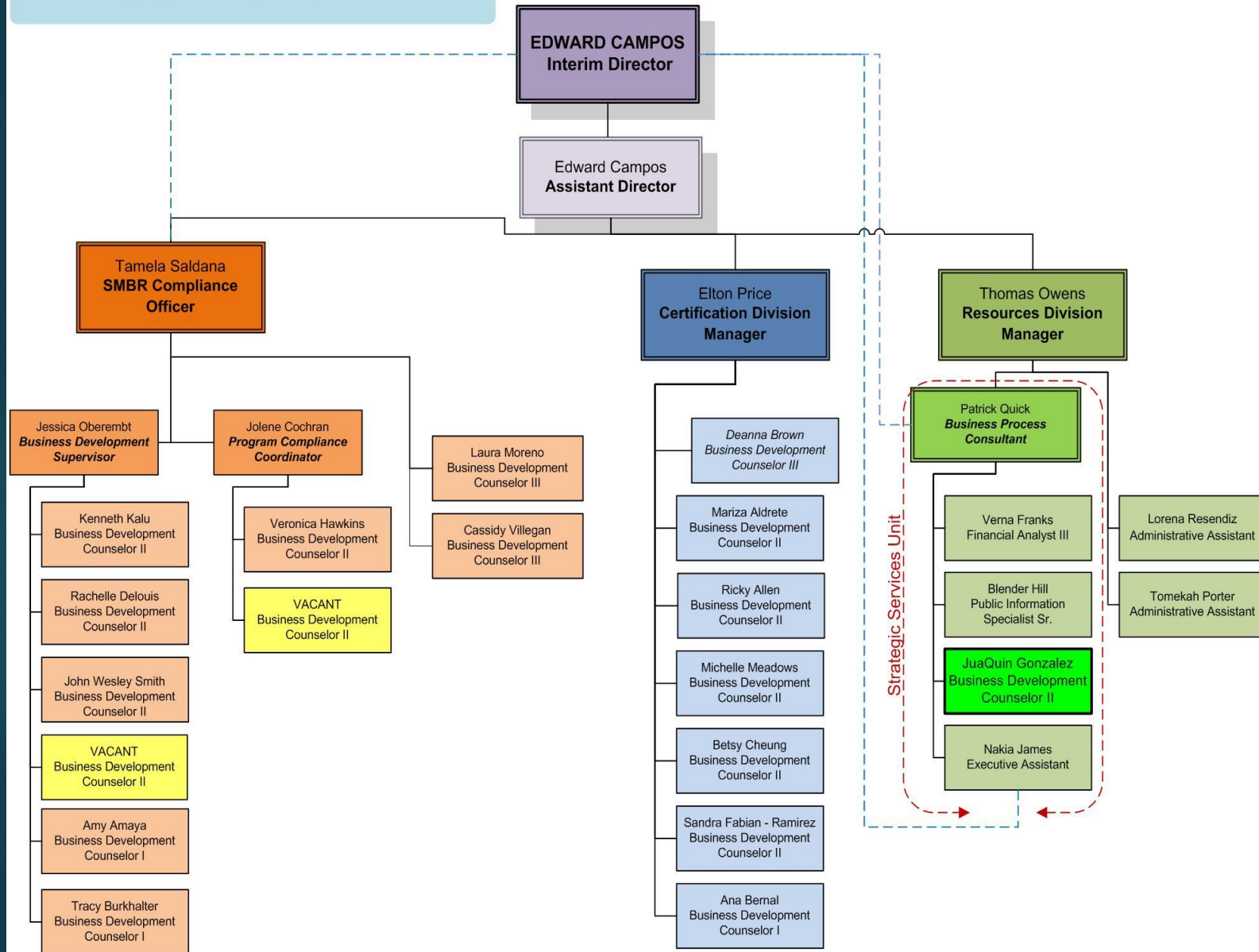
- <http://austin.disparity-study.com>
- [austin-study@mwbelaw.com](mailto:austin-study@mwbelaw.com)
- 855-692-3529 (855-MWBELAW)

## City of Austin Study Manager:

- Tamela Saldana,  
[DisparityStudy@austintexas.gov](mailto:DisparityStudy@austintexas.gov)

# SMALL & MINORITY BUSINESS RESOURCES ORGANIZATIONAL CHART

7



# Certified Firms by Type

(not number of firms)

Cert Type	CY 2019	CY 2020
MBE	696	730
WBE	612	635
DBE/ACDBE	515	514
ACDBE Only	78	88
SBE	n/a	152
<b>TOTAL</b>	<b>1823</b>	<b>2119</b>



# Certified Firms by Ethnicity

## MBE Certifications by ethnicity

	<u>CY 2019</u>	<u>CY 2020</u>
Asian	119	123
African-American	195	215
Hispanic	*359	371
Native American	23	21
<b>Total</b>	<b>696</b>	<b>730</b>

## WBE Certifications by ethnicity

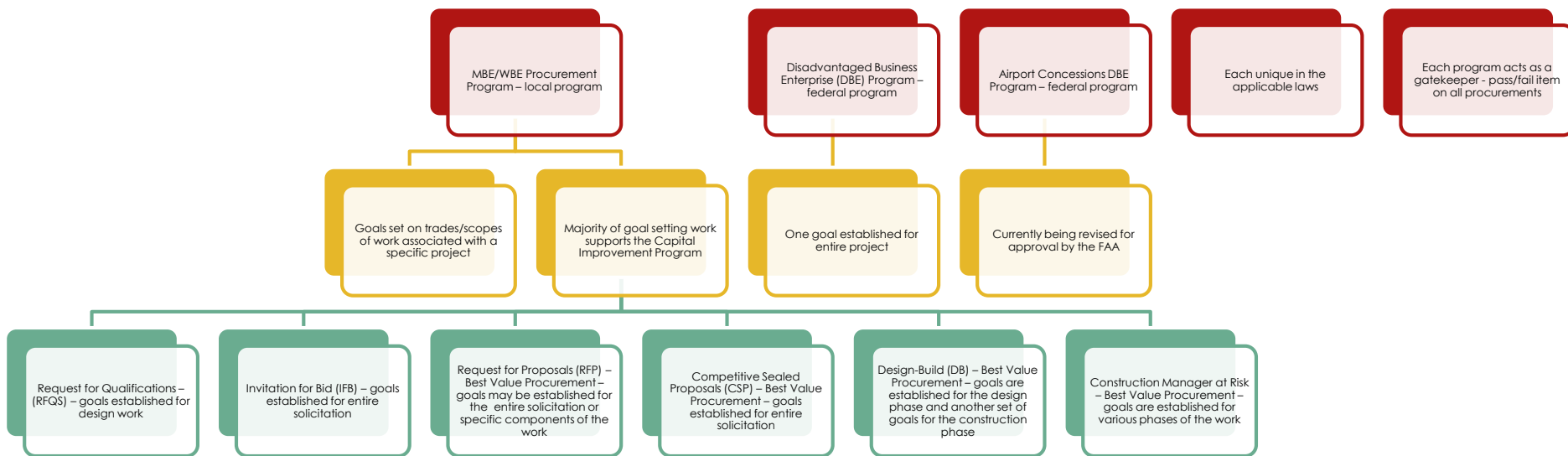
Asian	38	45
African-American	84	89
Hispanic	127	133
Native American	5	4
Caucasian	357	364
<b>Total</b>	<b>612</b>	<b>635</b>

## DBE/ACDBE Certifications

Asian	52	54
African-American	110	114
Hispanic	180	180
Native American	9	9
Non Minority Female	164	157
<b>Total</b>	<b>515</b>	<b>514</b>

# SMBR Programs

10



# COA Goal Setting Methodology

All COA's procurements over the City Manager's Authority are reviewed for goals except for:

Procurements exempted from SMBR Program (M/WBE Rules Section 1.2)

- |   |  |                                   |  |   |   |                          |   |
|---|--|-----------------------------------|--|---|---|--------------------------|---|
| 1. COA sale of personal and real property | 2. Loan transactions where COA is a debtor | 3. Lease and franchise agreements | 4. Agreements to use COA real property | 5. Gifts to COA for material, equipment, supplies or services | 6. Interlocal or intergovernmental agreements between or among political subdivisions | 7. Sole Source Purchases | 8. Public Health and Safety Emergency Purchases |
|---|--|-----------------------------------|--|---|---|--------------------------|---|

# Setting Goals

12

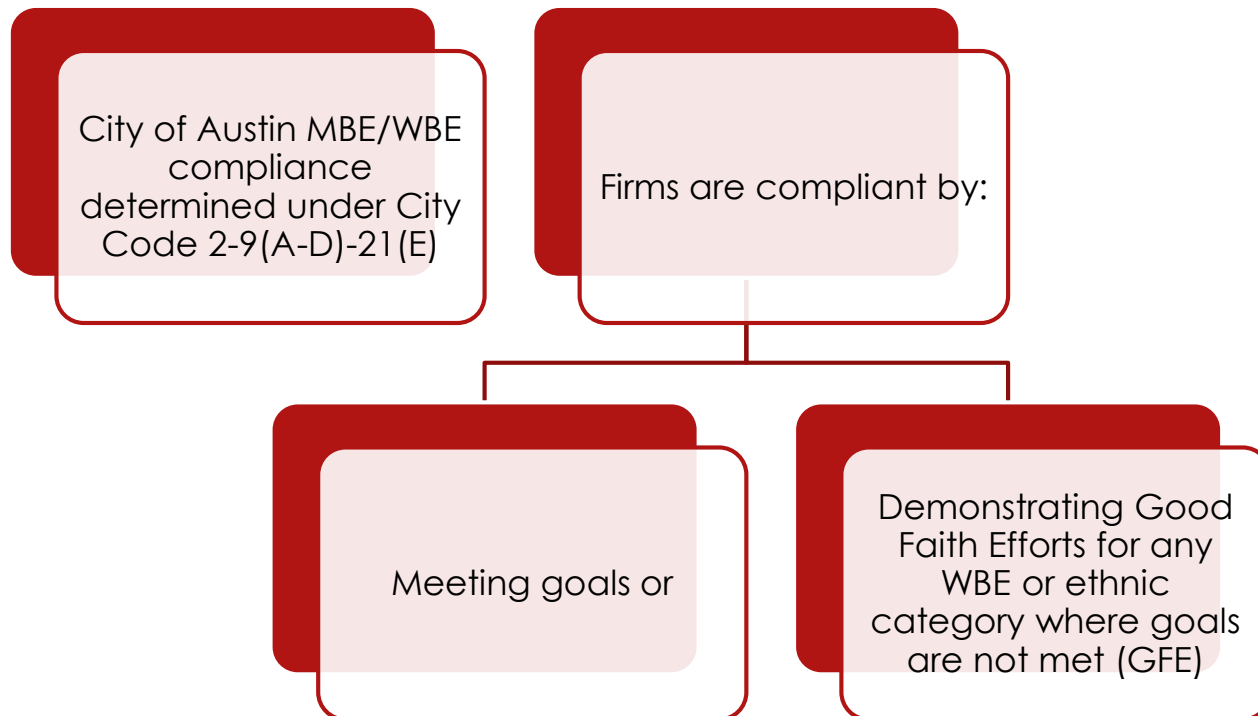
- ▶ Contract Specific Goal Setting
  - Solicitation document provides project overview
  - Trade Summary Sheet identifies scopes of work
  - Percentages reflect the anticipated amount of materials/supplies and services





# Compliance Determination

15



# Counting Participation

16

Prime certified firms may count their own participation



Firm must be certified by the City of Austin



Firms are certified for commodity codes on Compliance Plan



Every level of subcontractor participation may be counted toward the goals



Dually certified firms are counted as either MBE or WBE but not both



# Post Award Contract Monitoring

17

**Monitor contracts to assure MBE/WBE Program Compliance to include:**

- ▶ **Monitor contracts to assure compliance plan goals are being met and MBE/WBE subcontractors/suppliers are being utilized**
- ▶ **Reviews RFC changes to assure compliance and opportunities to MBE/WBEs on any new scopes of work where there is availability.**
- ▶ **Reviews and process Subcontract SUBK Expenditure Reports**
- ▶ **Reviews and process Contract Closeouts assuring MBE/WBE participation and payment**
- ▶ **Assist with MBE/WBE- Prime subcontract issues**

# Questions?