

Proposed Fee Simple Rutherford Property Acquisition in Hays County



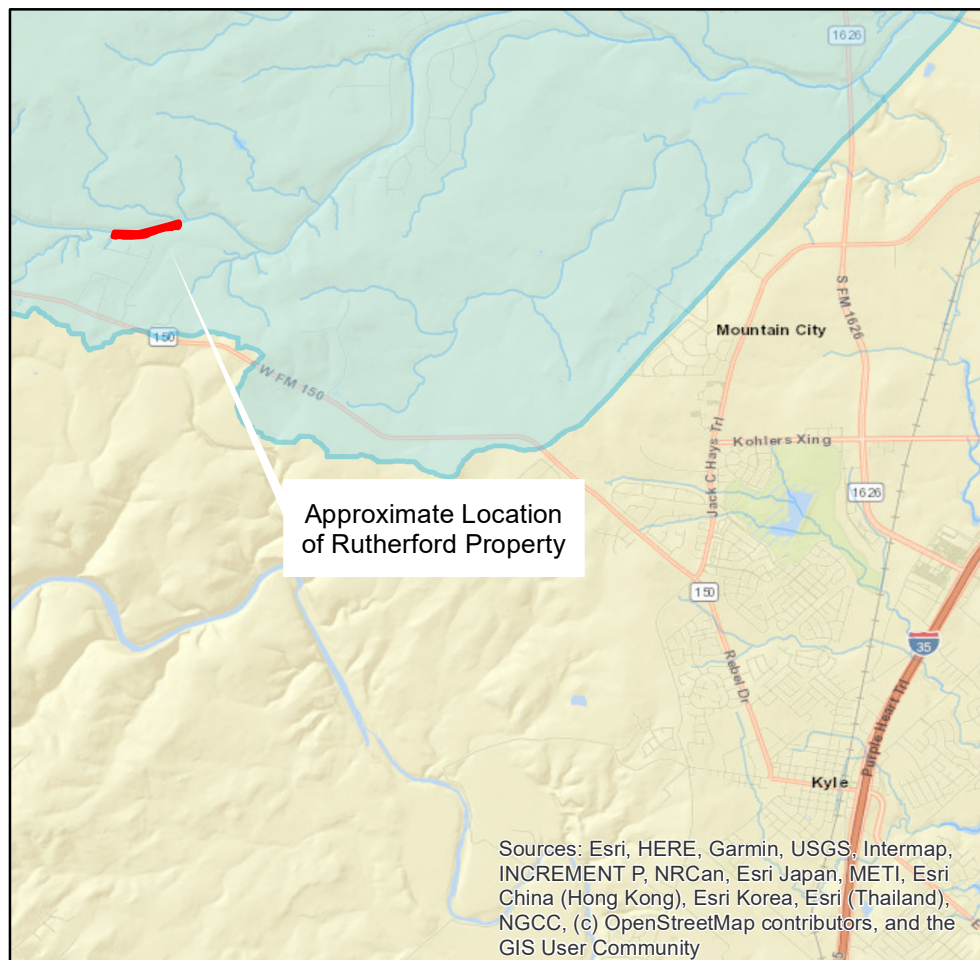
This product is for informational purposes and may not have been prepared for or be suitable for legal, engineering, or surveying purposes. It does not represent an on-the-ground survey and represent only the approximate relative location of property boundaries.

This product has been produced by the Watershed Protection Department for the Office of Real Estate Services for the sole purpose of geographic reference. No warranty is made by City of Austin regarding specific accuracy or completeness.

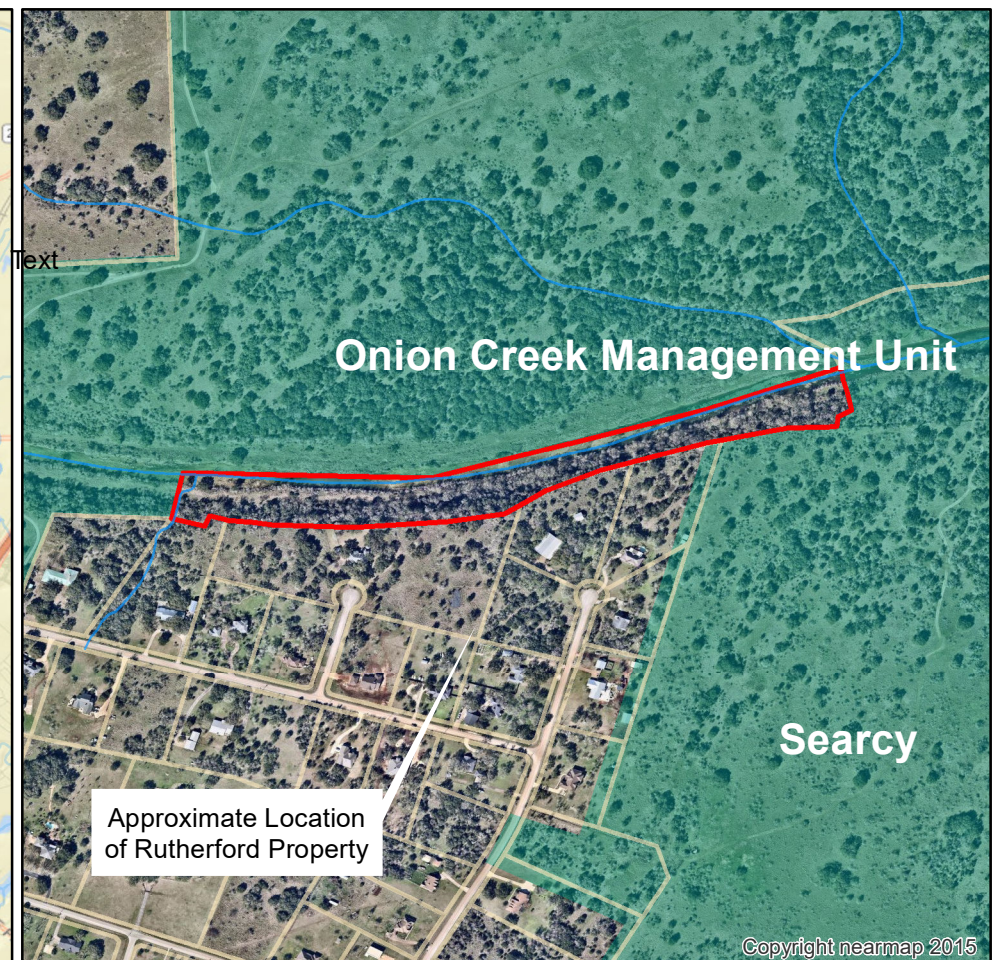
Produced by S. Hiers, 10/22/2020



- Rutherford (Approximately 9.72-acres)
- Hays Parcels
- Water Quality Protection Lands
- Edwards Aquifer Recharge Zone



0 1 2 4 Miles



0 0.125 0.25 0.5 Miles