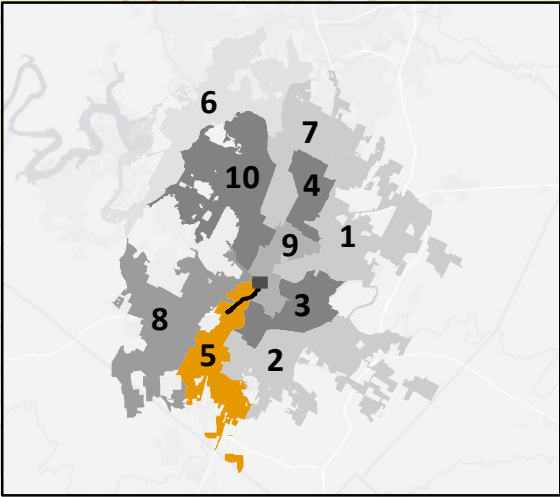
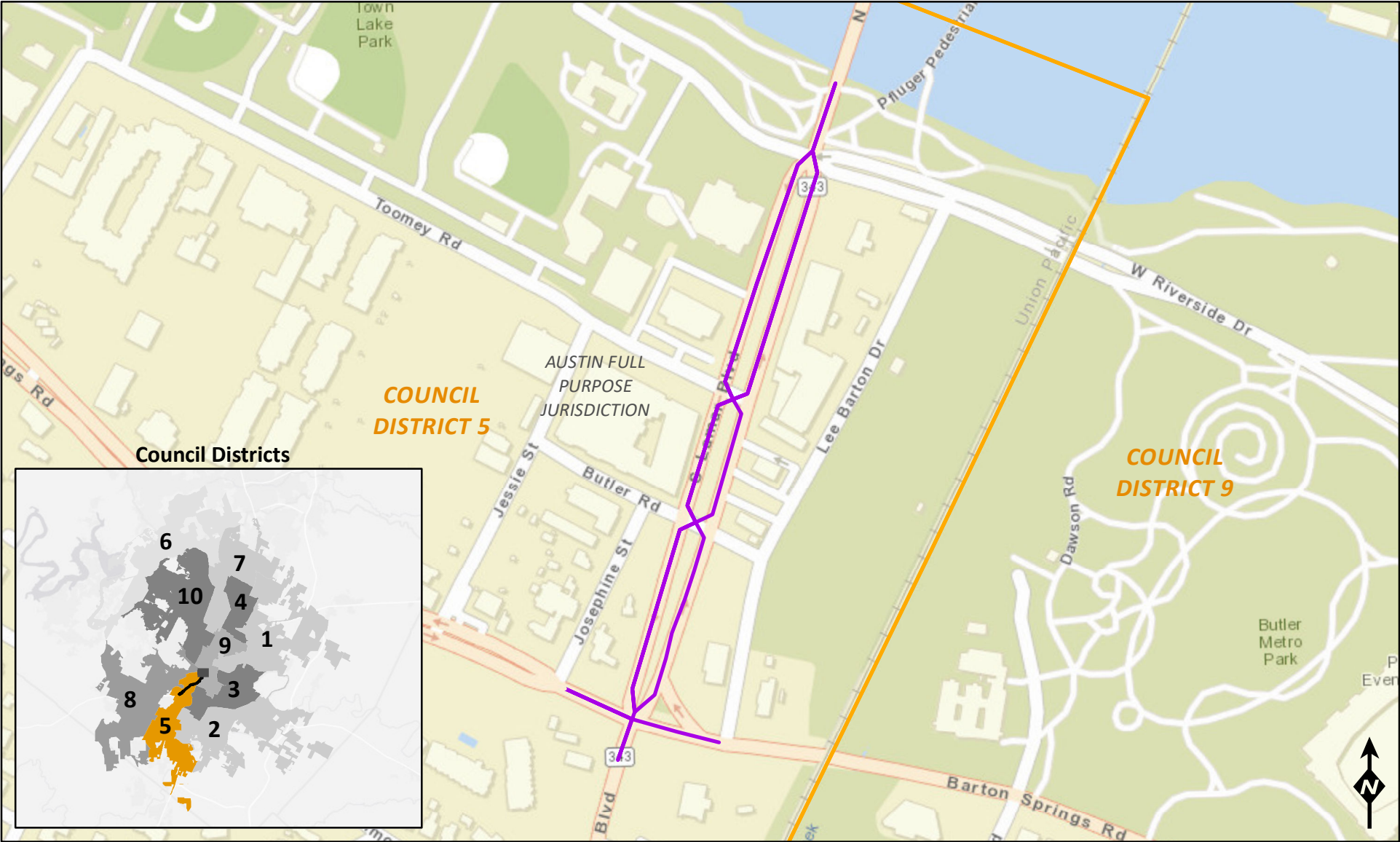
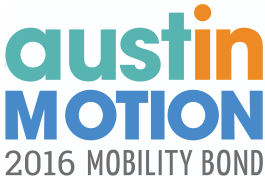


# Project Location: South Lamar Boulevard Corridor Riverside Drive to Barton Springs Road

This product is for informational purposes and may not have been prepared for or be suitable for legal, engineering, or surveying purposes. It does not represent an on-the-ground survey and represents only the approximate relative location of property boundaries. This product has been produced by the Corridor Program Office for the sole purpose of geographic reference. No warranty is made by the City of Austin regarding specific accuracy or completeness. Created on 11/3/2020 by HLinsley.



**Project Segments**

— Riverside Dr. to Barton Springs Rd.

**City Council Districts**

— City Council Districts

1 inch = 330 feet

