

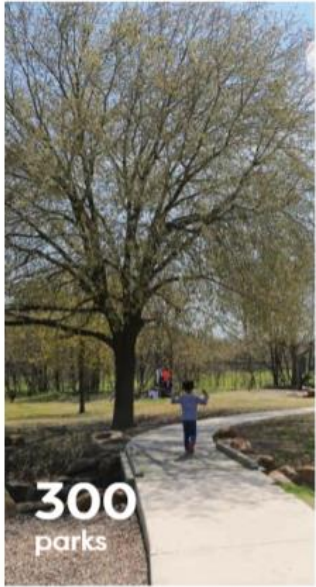


Strategic Partnership Agreements that Make Sense

Rich DePalma, Parks Board Member

1.26.2021

A Highly Used Parks and Recreation System

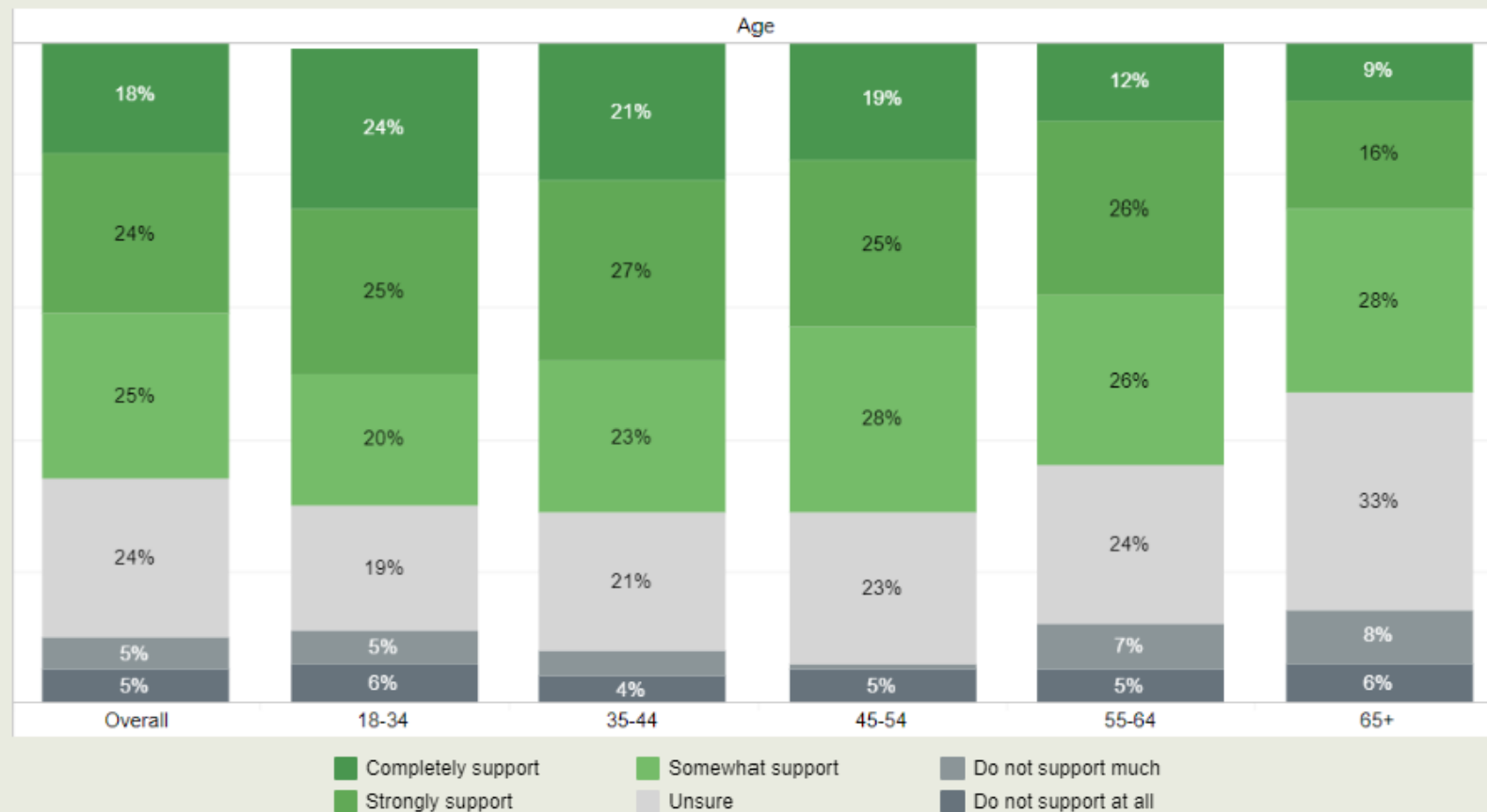


Public Support Found for Dedicated Tax Funding of Local Parks and Recreation

Two-thirds (66 percent) of U.S. adults want their local government to dedicate funds through revenues, taxes and levies that directly support parks and recreation. Dedicated park and recreation funding is essential to the parks, programs and services that help build healthy, strong and vibrant communities nationwide.

Select a characteristic:

Age ▼



2020 The Trust for Public Land ParkScore®

-Top 20 Ranking of Total Spending per Resident of the Largest 100 U.S. Cities

Rank	City	Population	Public spending	Public Spending per Resident	Private Spending	Private Spending per resident	Total Spending (public + private)	Total Spending per Resident	Percentage Private Dollars of Total Spending
1	Seattle, WA	721,685	\$230,851,261	\$320	\$22,707,768	\$31	\$253,559,029	\$351	9.8%
2	San Francisco, CA	884,353	\$233,380,842	\$264	\$57,539,975	\$65	\$290,920,817	\$329	24.7%
3	Minneapolis, MN	421,339	\$122,789,619	\$291	\$4,019,527	\$10	\$126,809,146	\$301	3.3%
4	Arlington, VA	230,112	\$66,891,952	\$291	\$0	\$0	\$66,891,952	\$291	0.0%
5	Washington, DC	702,321	\$162,001,480	\$231	\$12,064,182	\$17	\$174,065,662	\$248	7.4%
6	Plano, TX	302,806	\$71,057,316	\$235	\$11,247	\$0	\$71,068,563	\$235	0.0%
7	Portland, OR	657,424	\$151,765,560	\$231	\$1,377,831	\$2	\$153,143,391	\$233	0.9%
8	New York, NY	8,627,852	\$1,708,453,710	\$198	\$232,430,601	\$27	\$1,940,884,311	\$225	13.6%
9	St. Paul, MN	304,624	\$61,182,101	\$201	\$825,690	\$3	\$62,007,791	\$204	1.3%
10	Boise, ID	234,844	\$46,366,108	\$197	\$0	\$0	\$46,366,108	\$197	0.0%
11	Chicago, IL	2,744,859	\$513,531,861	\$187	\$10,753,113	\$4	\$524,284,974	\$191	2.1%
12	Cincinnati, OH	309,137	\$54,720,984	\$177	\$3,668,809	\$12	\$58,389,793	\$189	6.7%
13	Virginia Beach, VA	457,832	\$81,289,342	\$178	\$33,101	\$0	\$81,322,443	\$178	0.0%
14	Raleigh, NC	471,317	\$79,881,194	\$169	\$0	\$0	\$79,881,194	\$169	0.0%
15	Austin, TX	971,752	\$136,325,238	\$140	\$20,723,939	\$21	\$157,049,177	\$162	15.2%
16	Long Beach, CA	478,249	\$75,987,035	\$159	\$545,817	\$1	\$76,532,852	\$160	0.7%
17	St. Louis, MO	310,144	\$27,566,148	\$89	\$20,797,473	\$67	\$48,363,621	\$156	75.4%
18	Denver, CO	730,640	\$112,348,993	\$154	\$1,456,415	\$2	\$113,805,408	\$156	1.3%
19	Aurora, CO	373,444	\$57,957,578	\$155	\$0	\$0	\$57,957,578	\$155	0.0%
20	St. Petersburg, FL	263,815	\$40,452,317	\$153	\$0	\$0	\$40,452,317	\$153	0.0%

2020 The Trust for Public Land ParkScore®

-Top 20 Ranking of Total Spending per Resident of the Largest 100 U.S. Cities

Rank	City	Population	Public spending	Public Spending per Resident	Private Spending	Private Spending per resident	Total Spending (public + private)	Total Spending per Resident	Percentage Private Dollars of Total Spending
1	Seattle, WA	721,685	\$230,851,261	\$320	\$22,707,768	\$31	\$253,559,029	\$351	9.8%
2	San Francisco, CA	884,353	\$233,380,842	\$264	\$57,539,975	\$65	\$290,920,817	\$329	24.7%
3	Minneapolis, MN	421,339	\$122,789,619	\$291	\$4,019,527	\$10	\$126,809,146	\$301	3.3%
4	Arlington, VA	230,112	\$66,891,952	\$291	\$0	\$0	\$66,891,952	\$291	0.0%
5	Washington, DC	702,321	\$162,001,480	\$231	\$12,064,182	\$17	\$174,065,662	\$248	7.4%
6	Plano, TX	302,806	\$71,057,316	\$235	\$11,247	\$0	\$71,068,563	\$235	0.0%
7	Portland, OR	657,424	\$151,765,560	\$231	\$1,377,831	\$2	\$153,143,391	\$233	0.9%
8	New York, NY	8,627,852	\$1,708,453,710	\$198	\$232,430,601	\$27	\$1,940,884,311	\$225	13.6%
9	St. Paul, MN	304,624	\$61,182,101	\$201	\$825,690	\$3	\$62,007,791	\$204	1.3%
10	Boise, ID	234,844	\$46,366,108	\$197	\$0	\$0	\$46,366,108	\$197	0.0%
11	Chicago, IL	2,744,859	\$513,531,861	\$187	\$10,753,113	\$4	\$524,284,974	\$191	2.1%
12	Cincinnati, OH	309,137	\$54,720,984	\$177	\$3,668,809	\$12	\$58,389,793	\$189	6.7%
13	Virginia Beach, VA	457,832	\$81,289,342	\$178	\$33,101	\$0	\$81,322,443	\$178	0.0%
14	Raleigh, NC	471,317	\$79,881,194	\$169	\$0	\$0	\$79,881,194	\$169	0.0%
15	Austin, TX	971,752	\$136,325,238	\$140	\$20,723,939	\$21	\$157,049,177	\$162	15.2%
16	Long Beach, CA	478,249	\$75,987,035	\$159	\$545,817	\$1	\$76,532,852	\$160	0.7%
17	St. Louis, MO	310,144	\$27,566,148	\$89	\$20,797,473	\$67			4%
18	Denver, CO	730,640	\$112,348,993	\$154	\$1,456,415	\$2			8%
19	Aurora, CO	373,444	\$57,957,578	\$155	\$0	\$0			0%
20	St. Petersburg, FL	263,815	\$40,452,317	\$153	\$0	\$0			0%

Austin - \$67.08 spending per resident in 2015



The Trust for Public Land ParkScore®

-Ranking of Total Spending per Resident of the Texas Cities in the Largest 100 U.S. Cities

Rank	City	Population	Public spending	Public Spending per Resident	Private Spending	Private Spending per resident	Total Spending (public + private)	Total Spending per Resident	Percentage Private Dollars of Total Spending
6	Plano, TX	302,806	\$71,057,316	\$235	\$11,247	\$0	\$71,068,563	\$235	0.0%
15	Austin, TX	971,752	\$136,325,238	\$140	\$20,723,939	\$21	\$157,049,177	\$162	15.2%
36	Arlington, TX	394,539	\$43,512,198	\$110	\$0	\$0	\$43,512,198	\$110	0.0%
46	San Antonio, TX	1,465,079	\$139,967,678	\$96	\$2,405,084	\$2	\$142,372,762	\$97	1.7%
53	Houston, TX	2,414,978	\$167,217,777	\$69	\$32,298,453	\$13	\$199,516,230	\$83	19.3%
64	Irving, TX	247,615	\$17,590,765	\$71	\$0	\$0	\$17,590,765	\$71	0.0%
76	Laredo, TX	268,978	\$15,003,310	\$56	\$0	\$0	\$15,003,310	\$56	0.0%
79	El Paso, TX	698,613	\$34,491,550	\$49	\$0	\$0	\$34,491,550	\$49	0.0%
83	Garland, TX	248,363	\$11,484,740	\$46	\$0	\$0	\$11,484,740	\$46	0.0%
85	Corpus Christi, TX	334,834	\$15,357,030	\$46	\$0	\$0	\$15,357,030	\$46	0.0%
91	Fort Worth, TX	906,054	\$32,906,985	\$36	\$895,224	\$1	\$33,802,209	\$37	2.7%
92	Lubbock, TX	263,923	\$8,311,000	\$31	\$25,011	\$0	\$8,336,011	\$32	0.3%

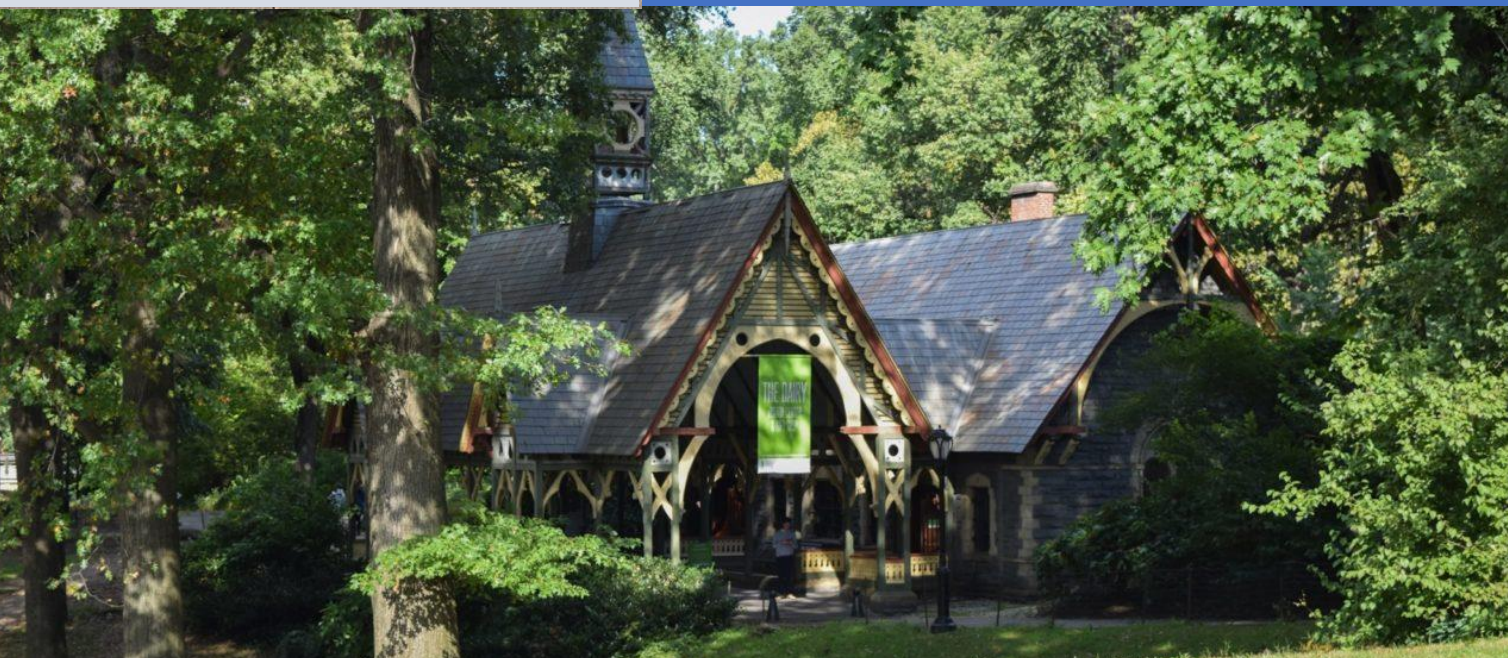


Fairmont Park Conservancy - Philly

Conservancies at Work



Discovery Green – Houston



The Dairy. Central Park Conservancy



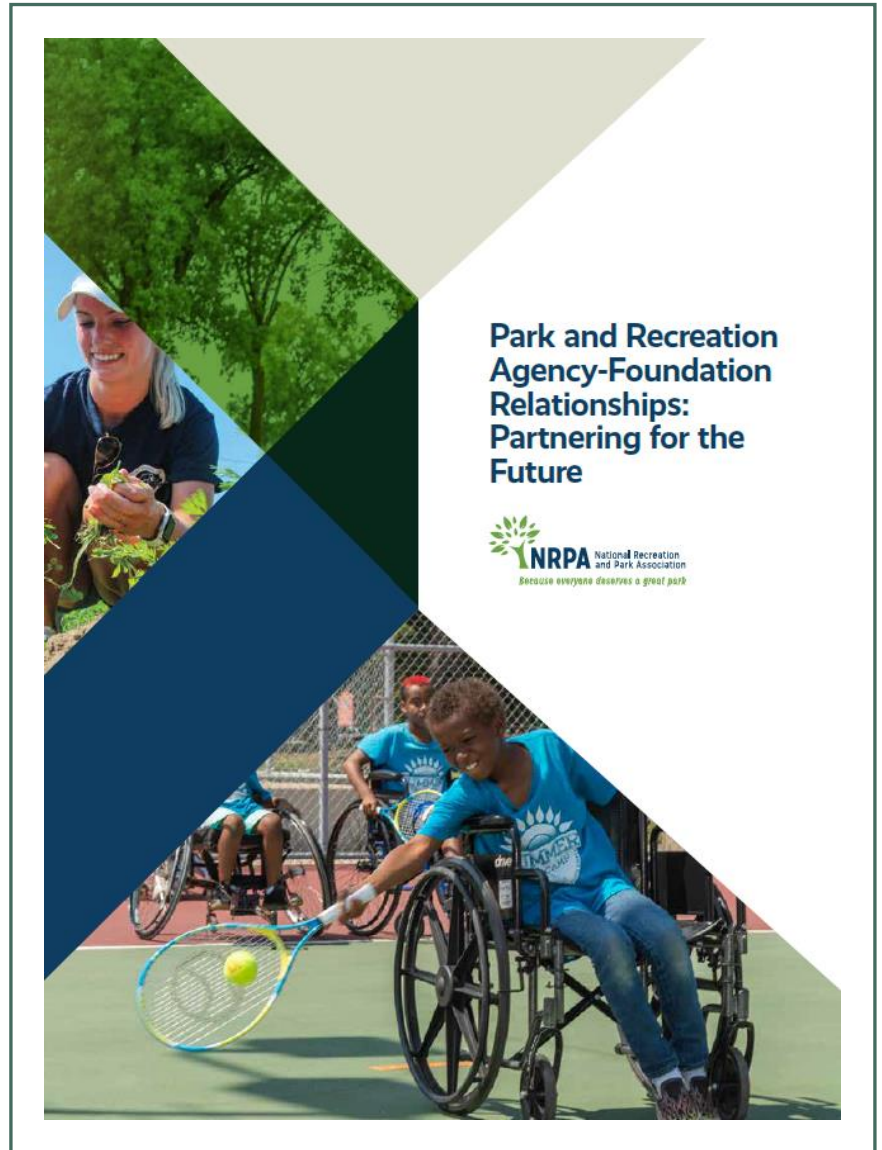
Inspiring Life in the Heart of Atlanta

The Piedmont Park Conservancy, a nonprofit organization, raises over \$3.5 million dollars annually to preserve and enhance the park.

♥ SUPPORT THE PARK

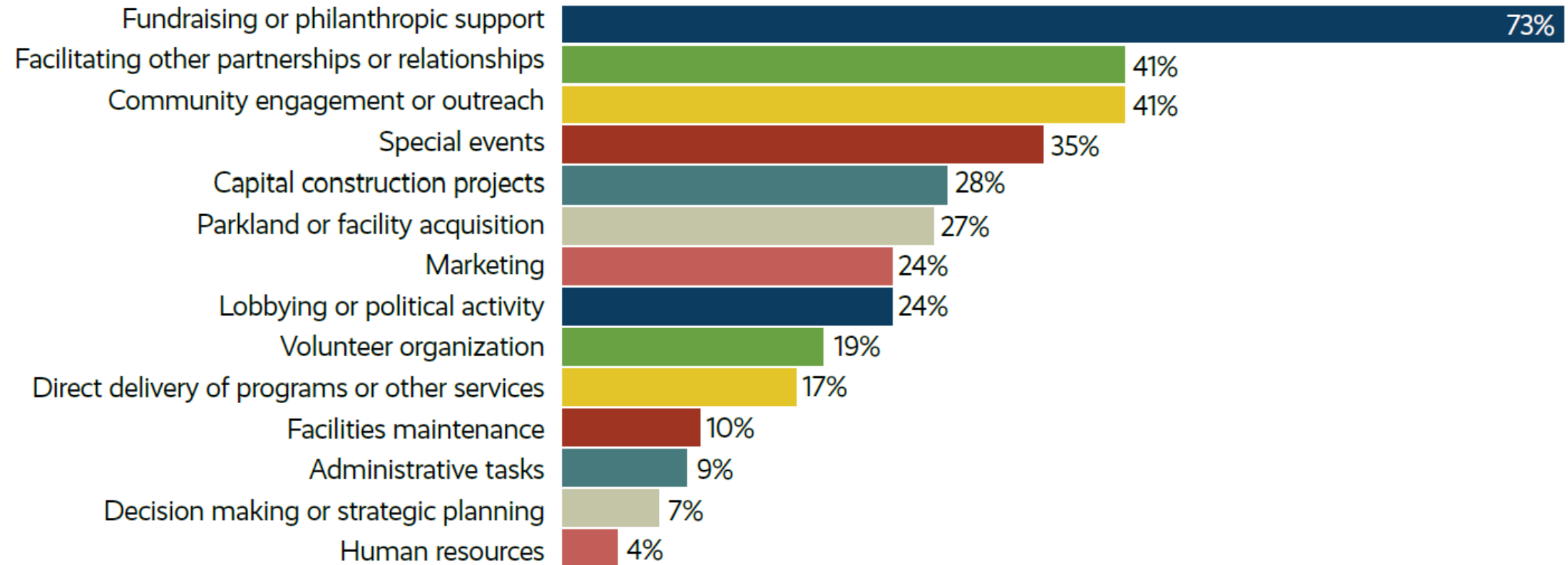
Piedmont Park Conservancy

“...the role of nonprofit foundations and friends' groups may only become more prominent in the years to come as agencies grapple with the financial implications of the Great Recession, COVID-19 pandemic and future crises.”



Park and Recreation Leaders Place a High Degree of Importance on Their Foundations' Fundraising Support

(Percent of Respondents Rating Specific Activities as “Extremely” or “Very” Important)



Thank you