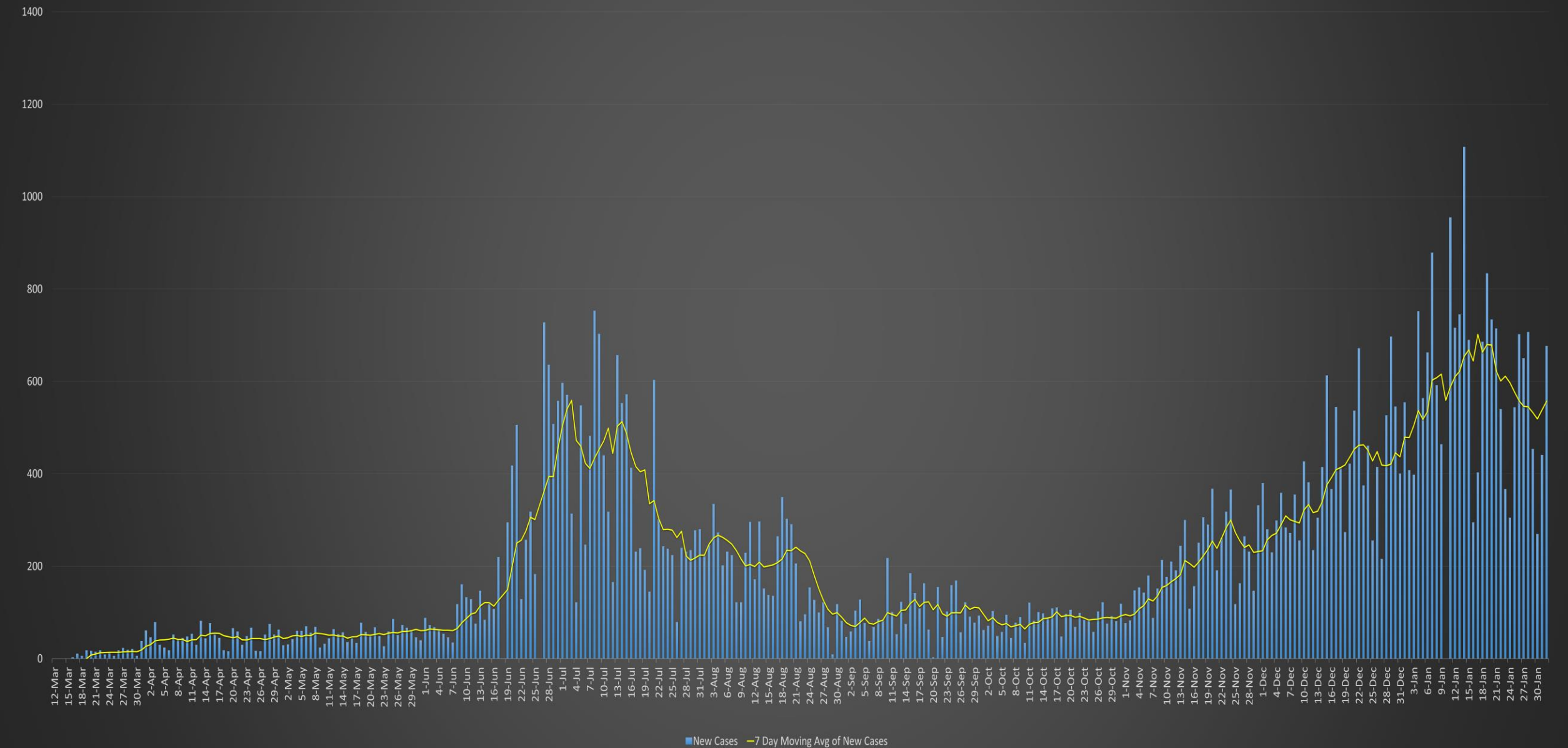

COVID-19 Update

February 2, 2021

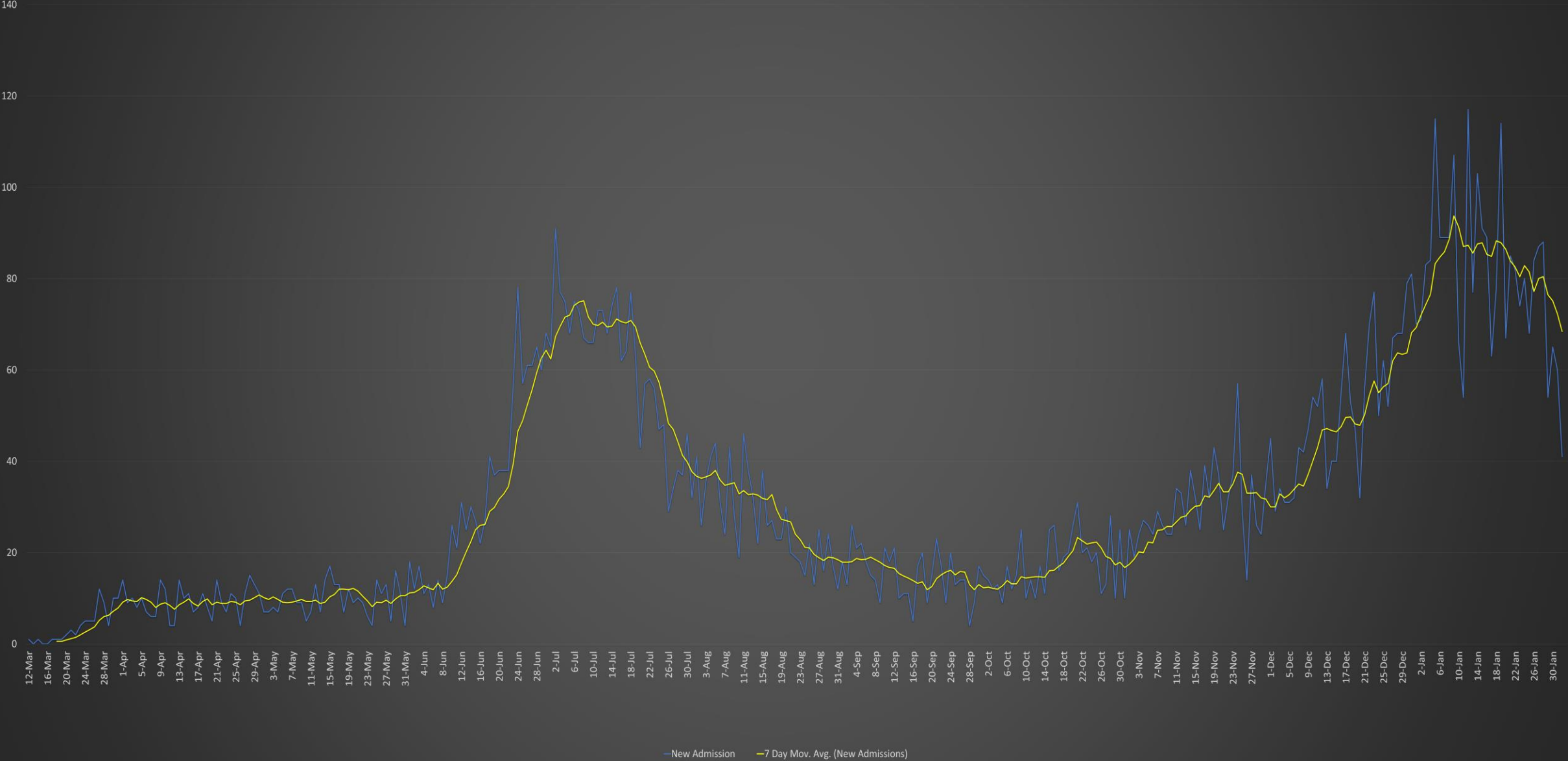
Austin Public Health

Mark Escott, MD, MPH, Interim Health Authority

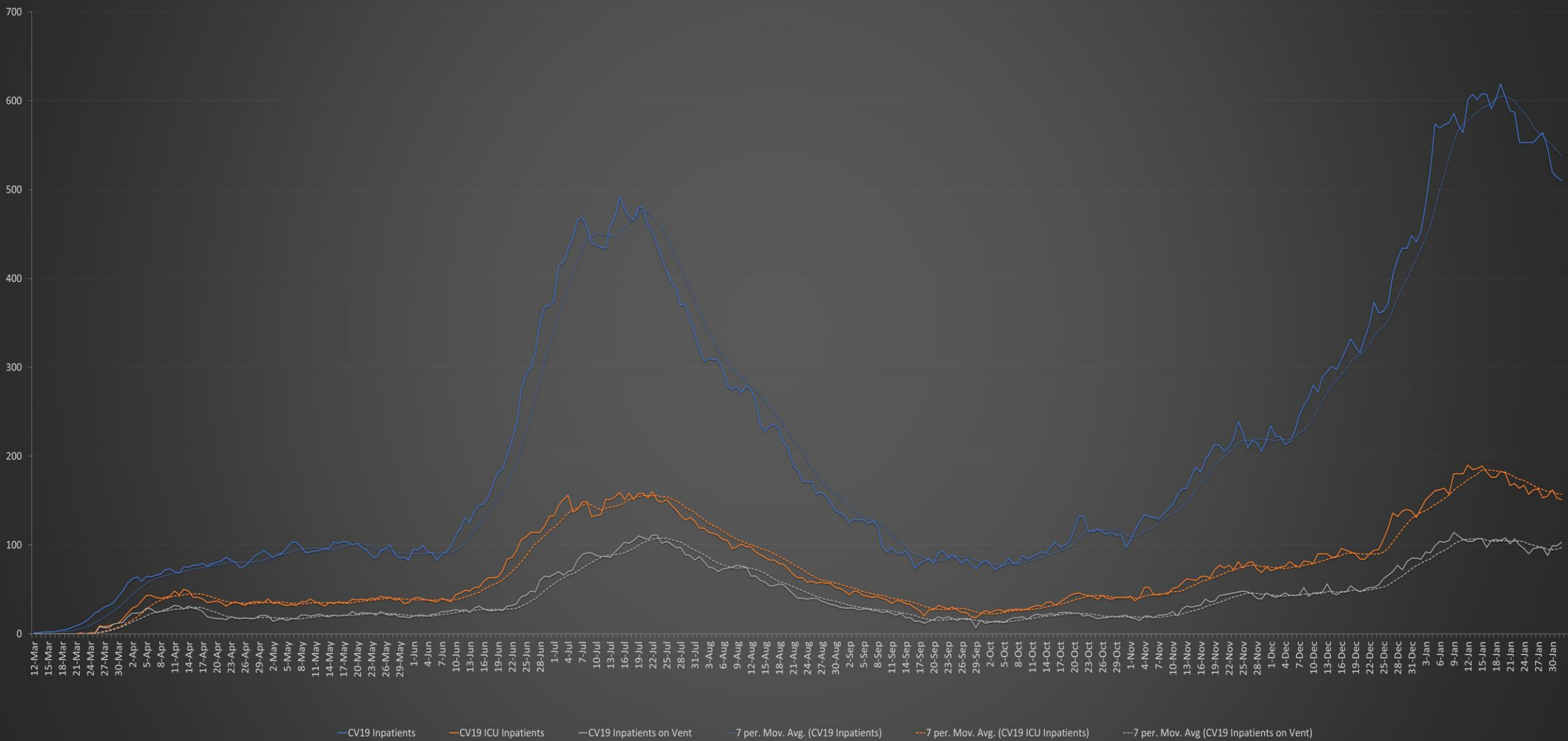
COVID-19 Travis County New Confirmed Cases



COVID-19 Austin MSA New Admissions



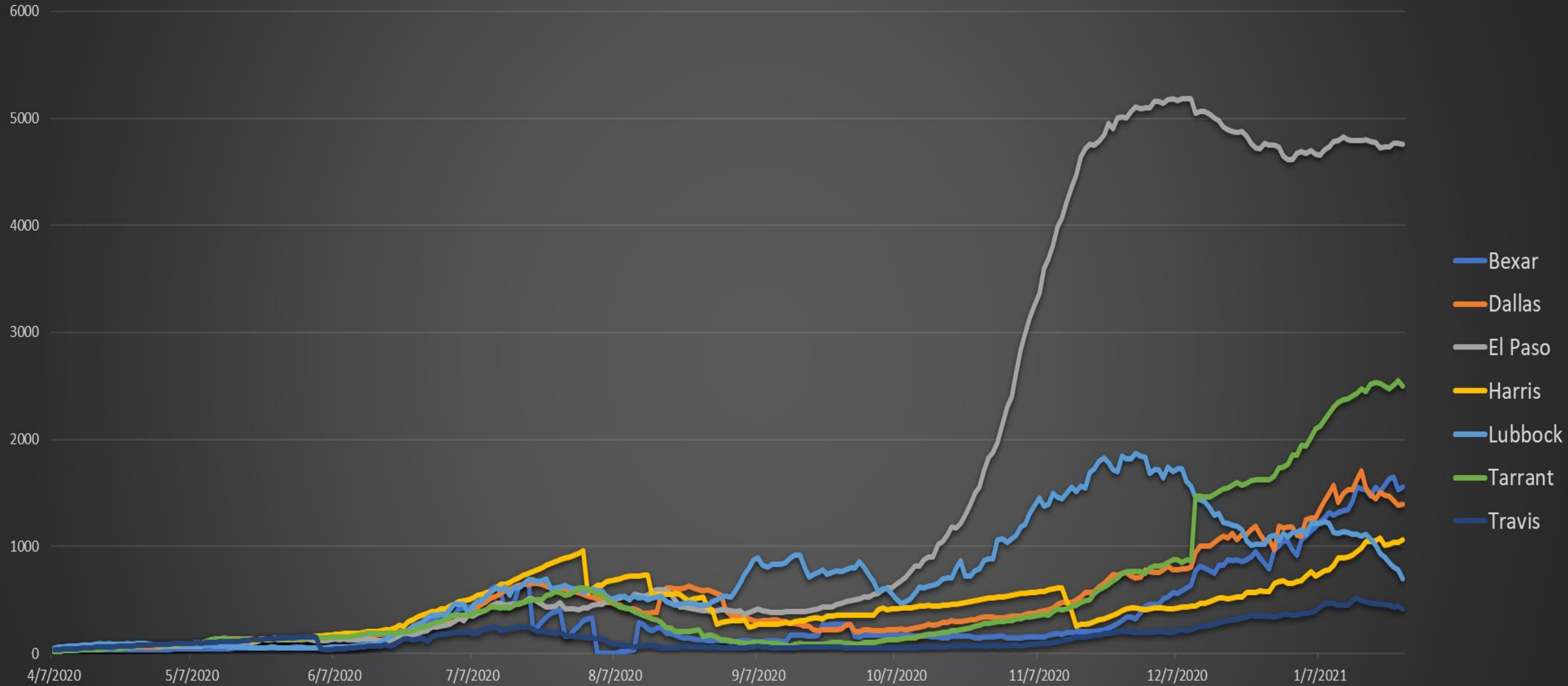
COVID-19 AUSTIN MSA CURRENT HOSPITALIZATIONS, ICU ADMISSIONS, AND VENTILATOR USE



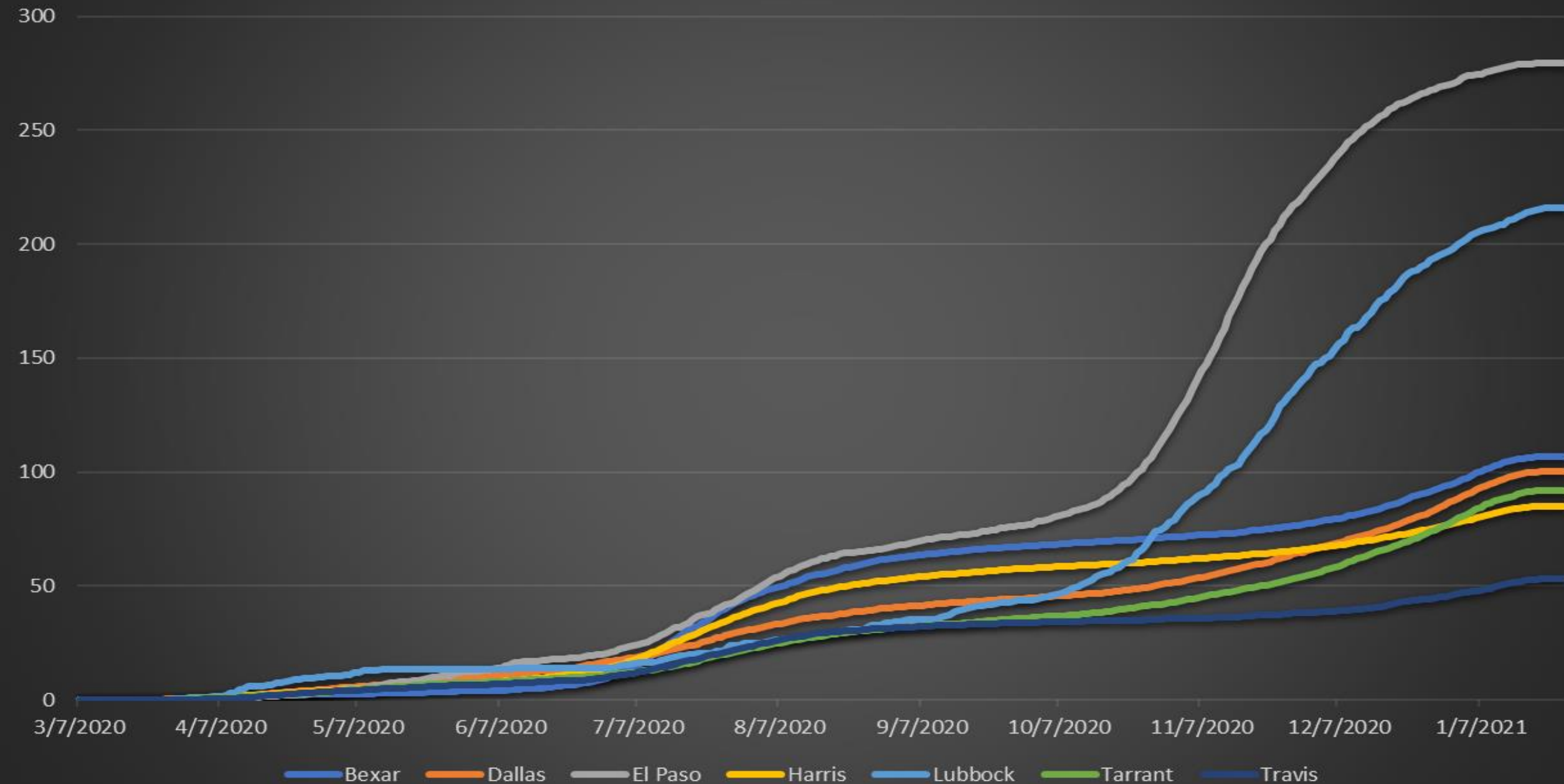
COVID Hospital Surge – Metropolitan

- Austin (TSA O): 14.59%→12.19%
- Houston (TSA Q): 18.69%→17.09%
- El Paso (TSA I): 19.0%→17.38%
- Dallas/FW (TSA E): 21.8%→18.82%
- San Antonio (TSA P): 23.72%→19.66%

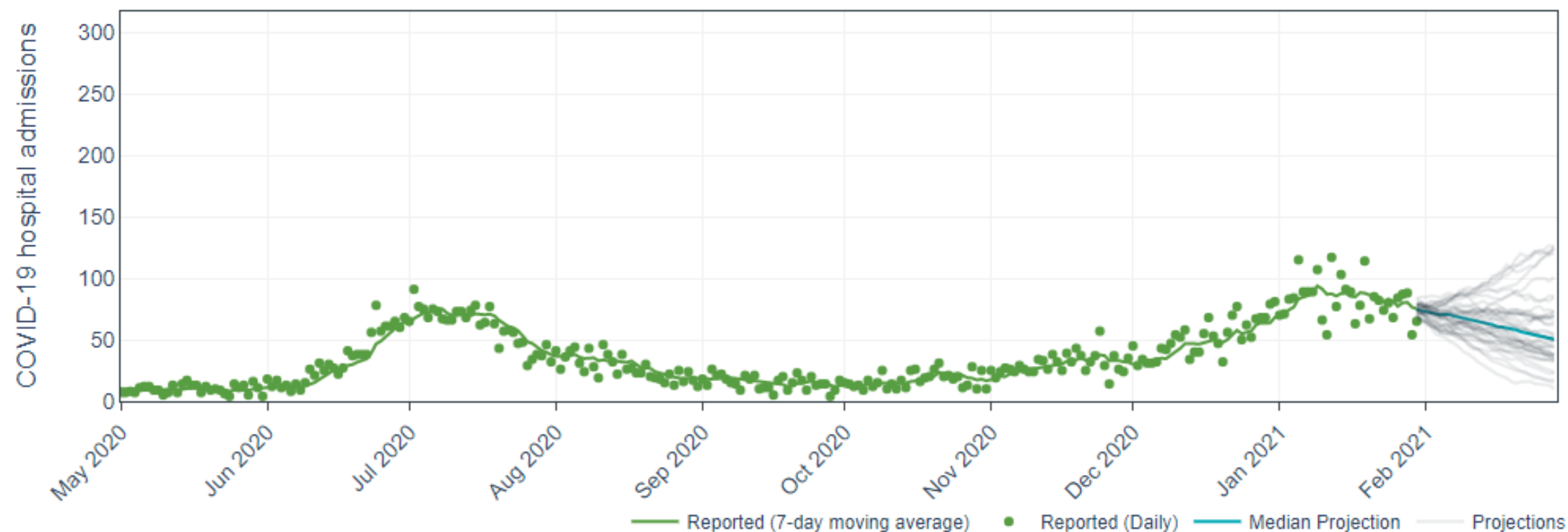
Active COVID-19 Cases by County (per 100,000 pop.)



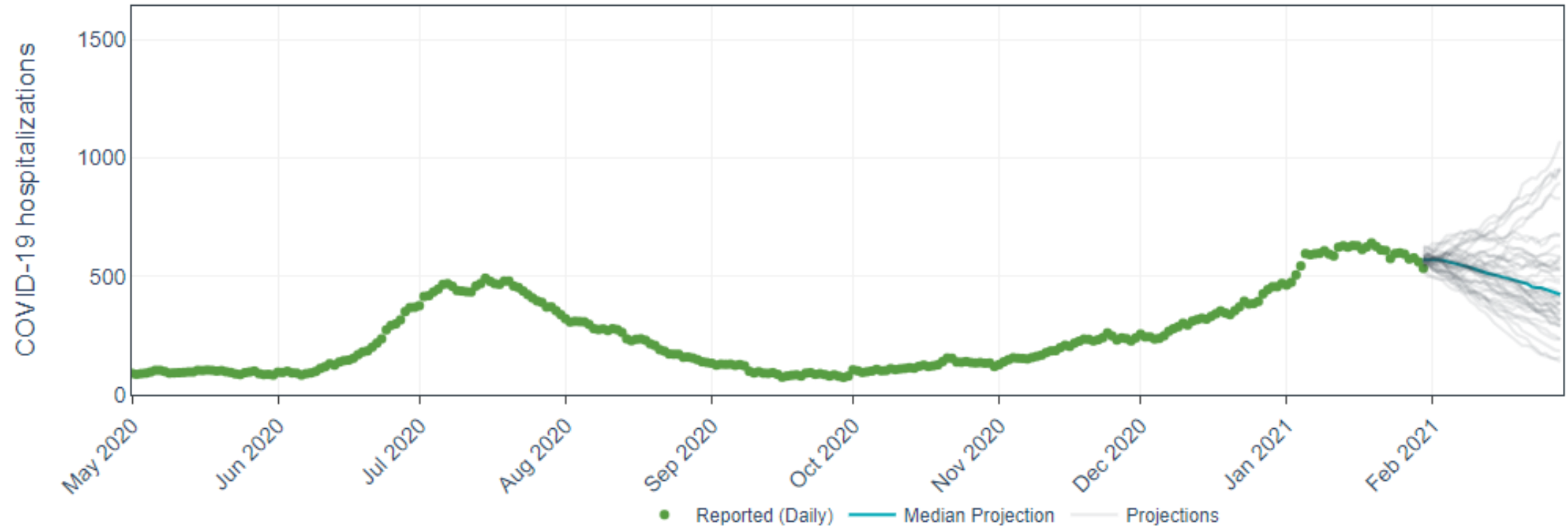
COVID-19 Cumulative Deaths by County (per 100,000 pop.)



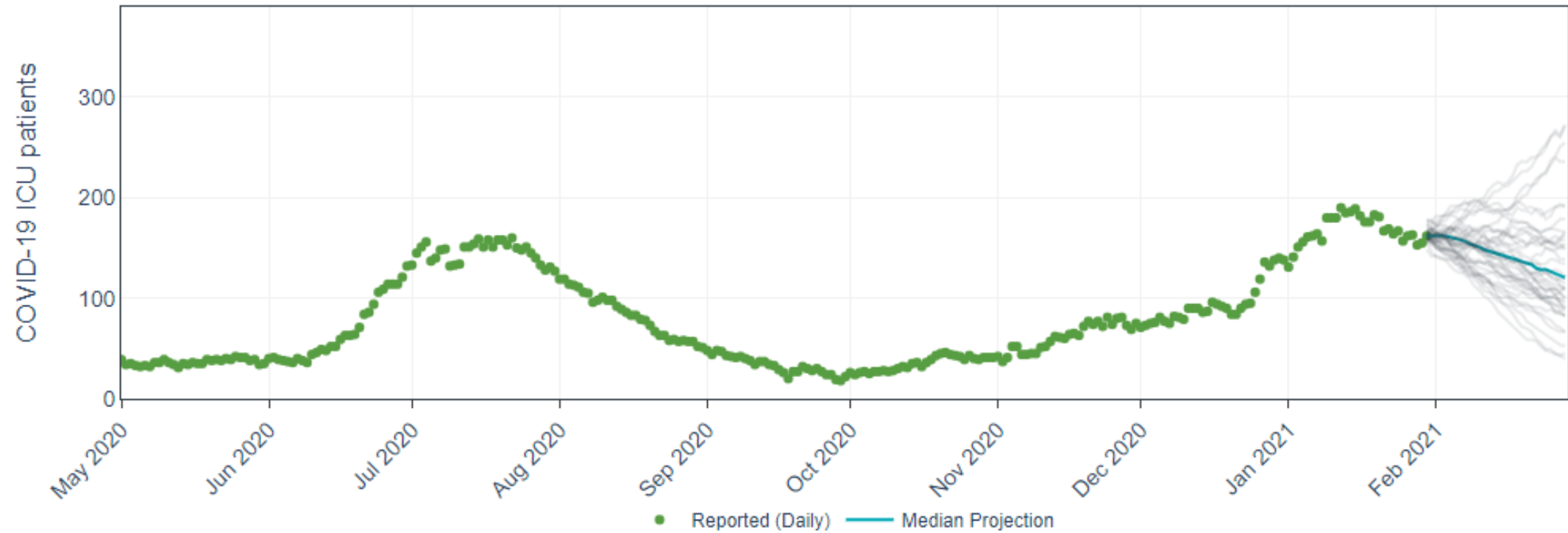
Daily COVID-19 Hospital Admissions in the Austin-Round Rock MSA (7 day moving average)



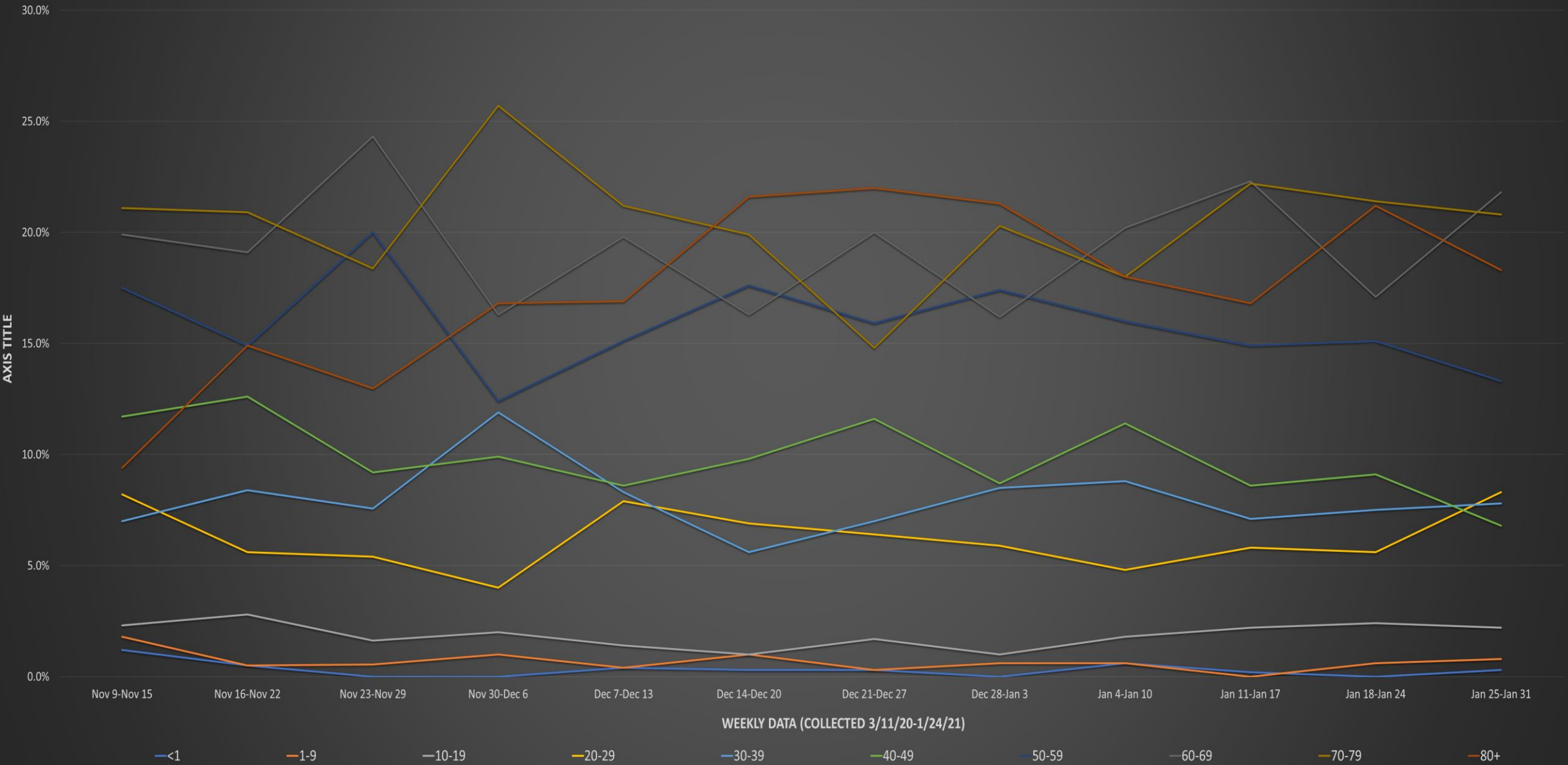
Daily COVID-19 Hospitalizations in the Austin-Round Rock MSA



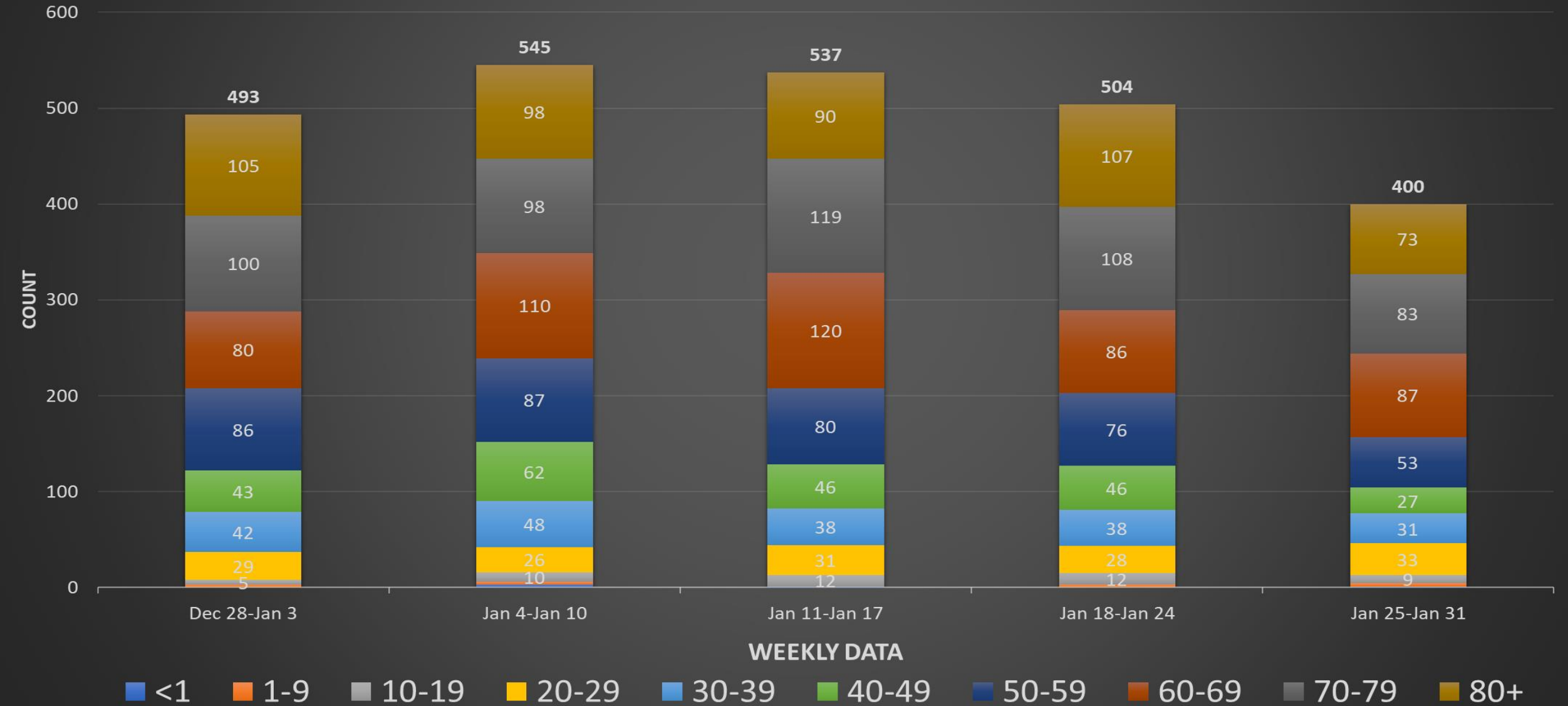
Daily COVID-19 ICU patients in the Austin-Round Rock MSA



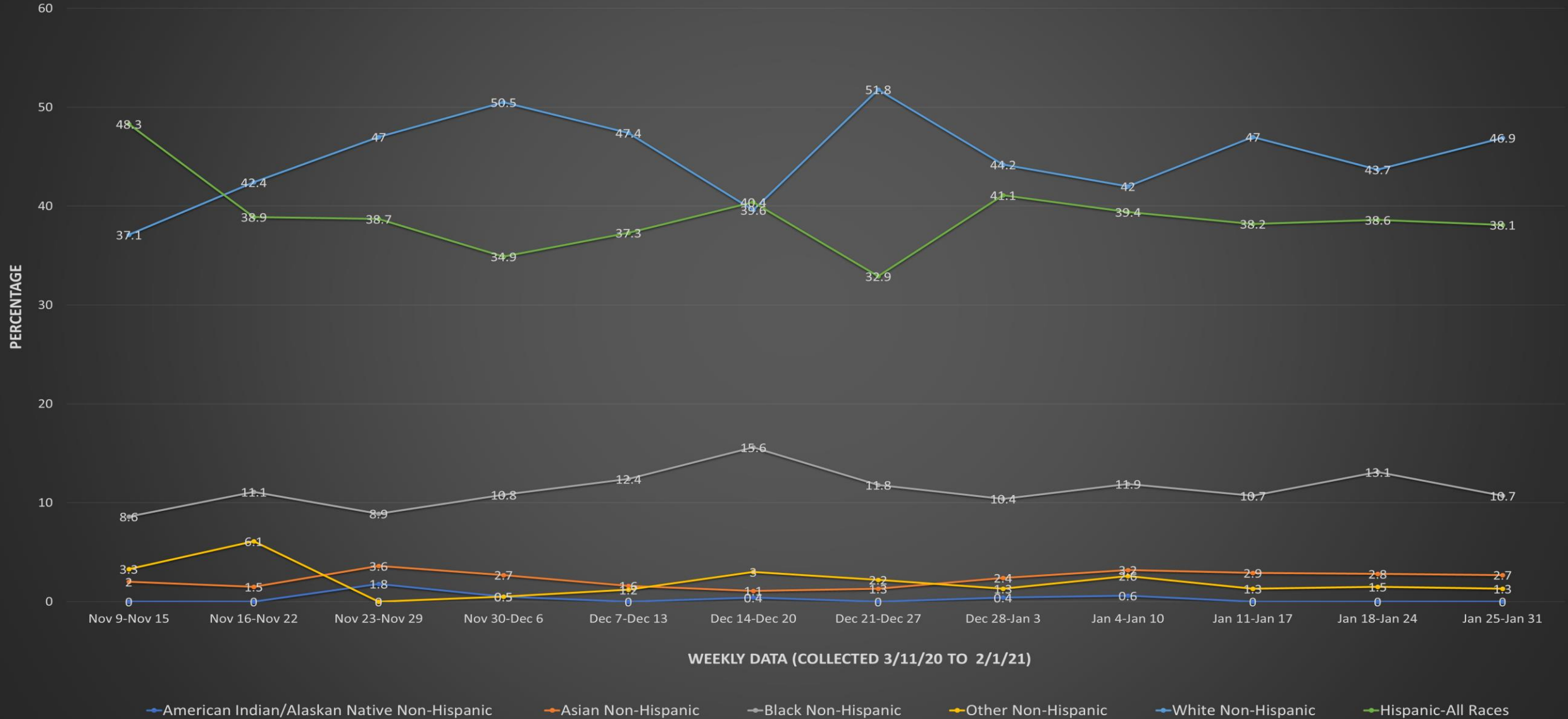
City of Austin - Travis County COVID-19 Hospitalization by Age Group
(Austin MSA)



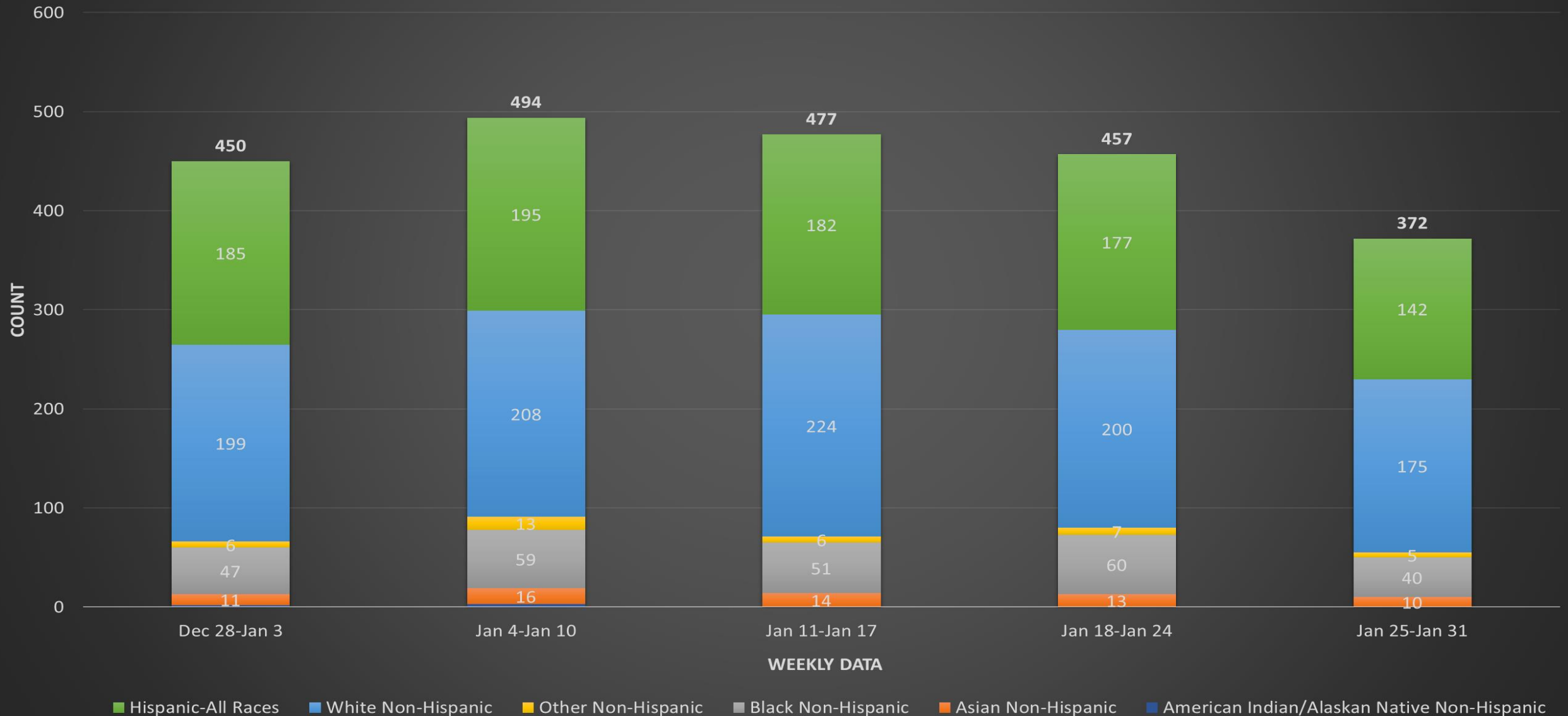
City of Austin - Travis County COVID-19 Count of Weekly Hospitalizations by Age Group (Austin MSA)

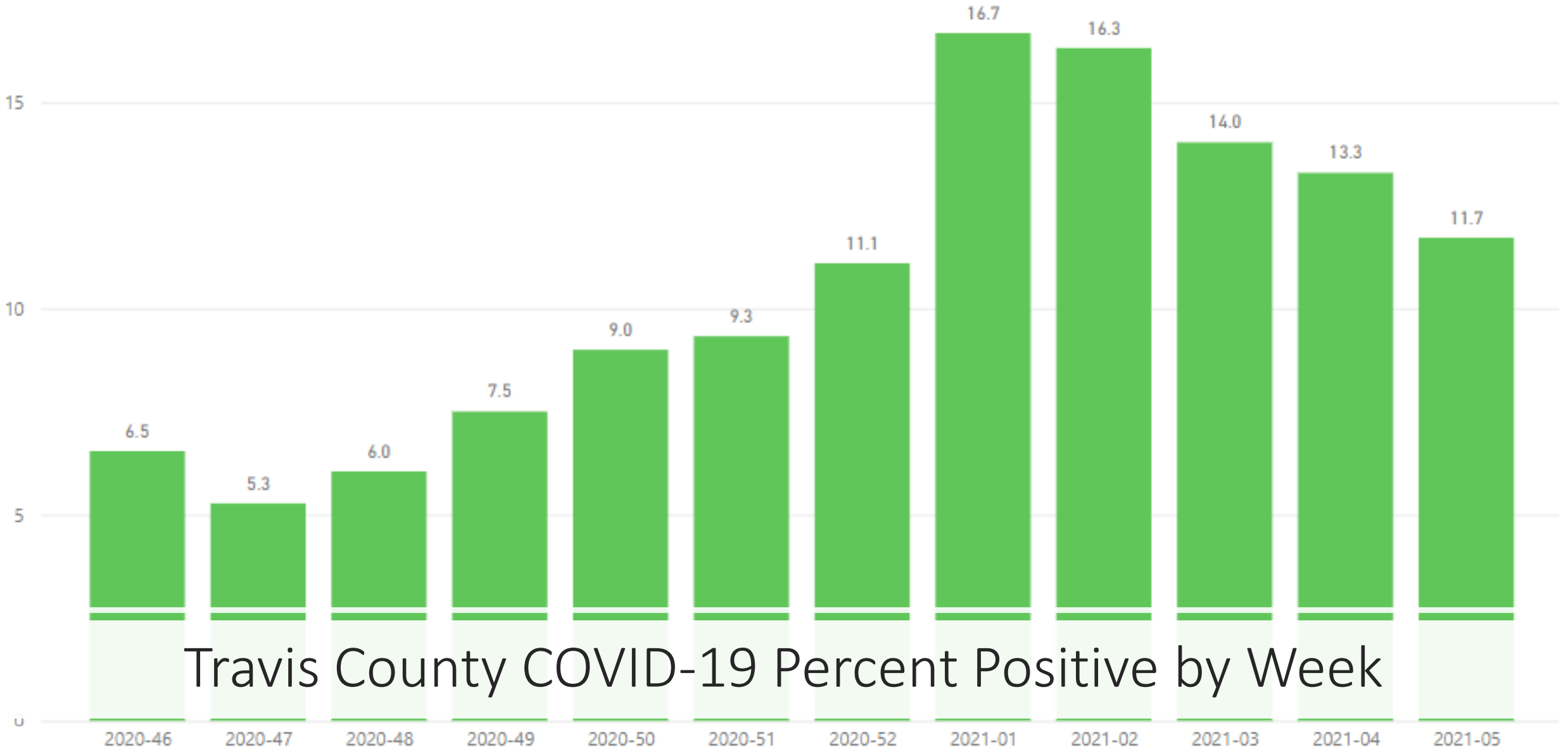


City of Austin - Travis County COVID-19 Hospitalization by Race & Ethnicity (Austin MSA)



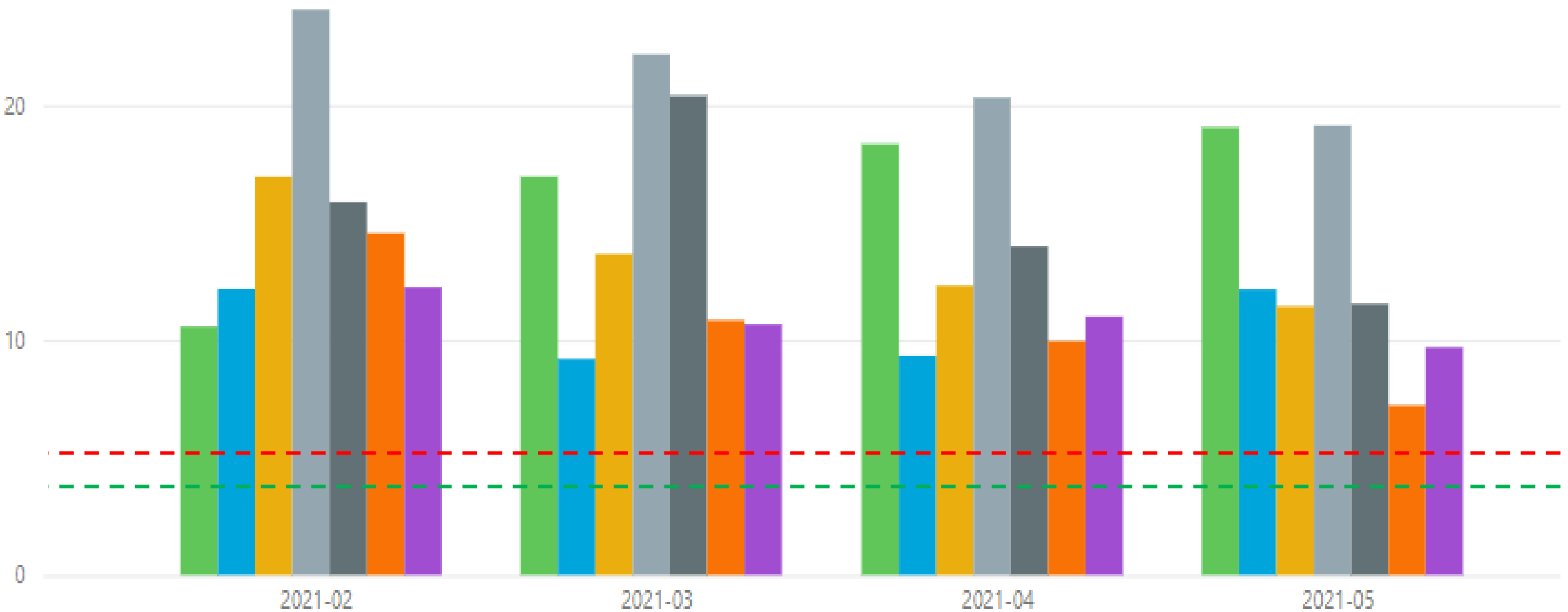
City of Austin - Travis County COVID-19 Count of Weekly Hospitalizations by Race/Ethnicity (Austin MSA)



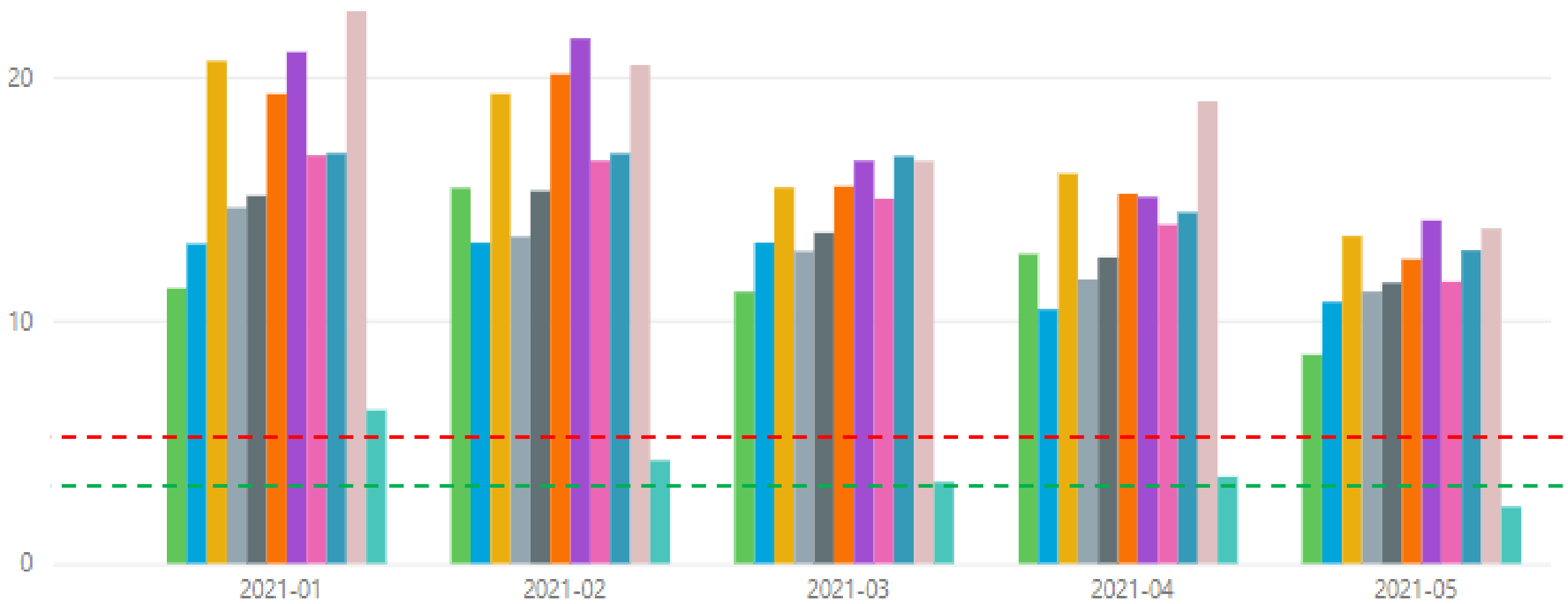


Travis County COVID-19 Percent Positive by Week

Race/Ethnicity
 ● American Indian or Alaska Native
 ● Asian
 ● Black or African American
 ● Hispanic or Latino
 ● Native Hawaiian or Other Pacific Islander
 ● Other
 ● White



Age Group at Collection ● <1 ● 01-09 ● 10-19 ● 20-29 ● 30-39 ● 40-49 ● 50-59 ● 60-69 ● 70-79 ● 80+ ● Unknown



Positivity in School- aged Children 1/24-1/30

High School: 11.9%

Middle School: 13.1%

Elementary School: 10.6%

Preschool: 10.3%

Travis County Schools Report: 1/25-1/31

By District—Self-reported Cases of On-Campus Individuals: **TOTAL= 289 cases**

Note: Schools with no self-reported cases for the preceding week are not required to submit a report to APH.

District	Student Cases ¹	Staff Cases ²	Other Cases ³
Austin ISD	27	42	0
Charter School	6	4	0
Del Valle ISD	8	12	0
Eanes ISD	41	4	0
Elgin ISD	3	0	0
Lago Vista ISD	4	1	0
Lake Travis ISD	7	5	1
Leander ISD	6	3	0
Manor ISD	15	10	0
Pflugerville ISD	37	12	0
Private School	17	7	0
Round Rock ISD	8	3	0
Texas State School	4	2	0
Total	183	105	1

Travis County Schools Report: 1/25-1/31

By District—Close Contacts undergoing Quarantine: TOTAL= 2177 close contacts

District	Students in Quarantine	Staff in Quarantine
Austin ISD	357	93
Charter School	55	8
Del Valle ISD	12	17
Eanes ISD	444	46
Elgin ISD	29	0
Lago Vista ISD	18	3
Lake Travis ISD	125	11
Leander ISD	0	0
Manor ISD	173	53
Pflugerville ISD	448	51
Private School	88	24
Round Rock ISD	20	3
Texas State School	65	34
Total	1834	343

Accession Estates (AL)
Cases within last 14 days: 0
Cases within last 28 days: 2

Arbor Terrace Lakeway (AL)
Cases within last 14 days: 7
Cases within last 28 days: 21

Arden Courts (AL)
Cases within last 14 days: 3
Cases within last 28 days: 6

Auberge at Bee Caves (AL)
Cases within last 14 days: 0
Cases within last 28 days: 4

Auberge at Onion Creek (AL)
Cases within last 14 days: 3
Cases within last 28 days: 9

Cases

New Cases Within Last 14 Days

New Cases Within Last 28 Days

Deaths

Travis County Percent Positivity

3,181

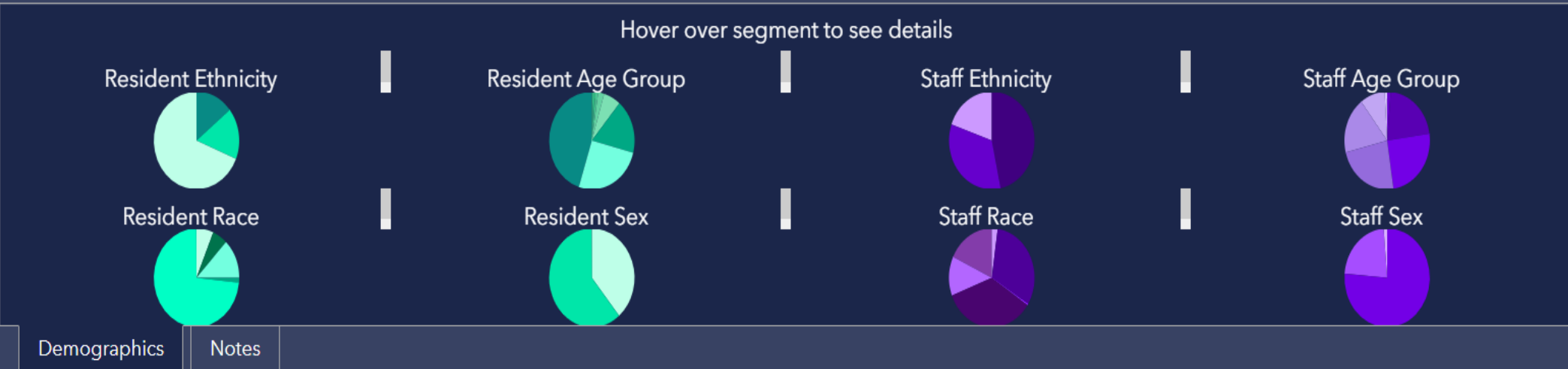
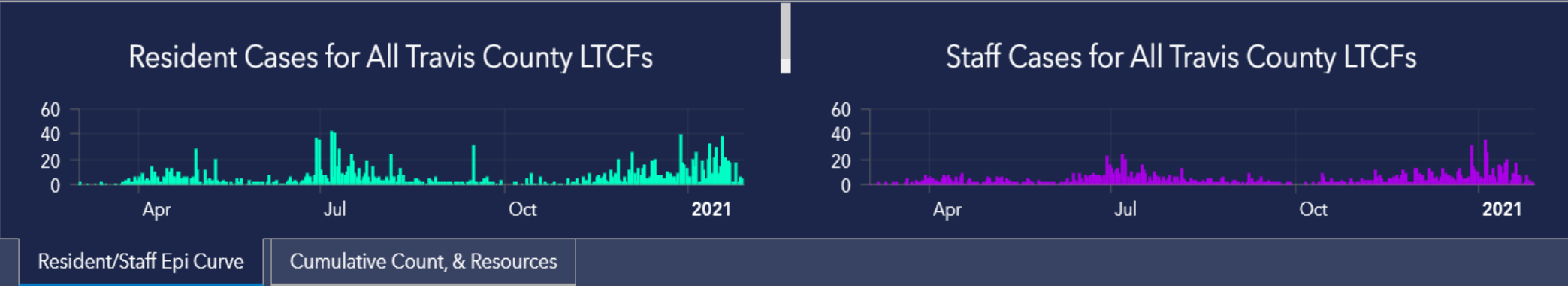
273

620

260

12.6%

Data from January 7-January 20, 2021

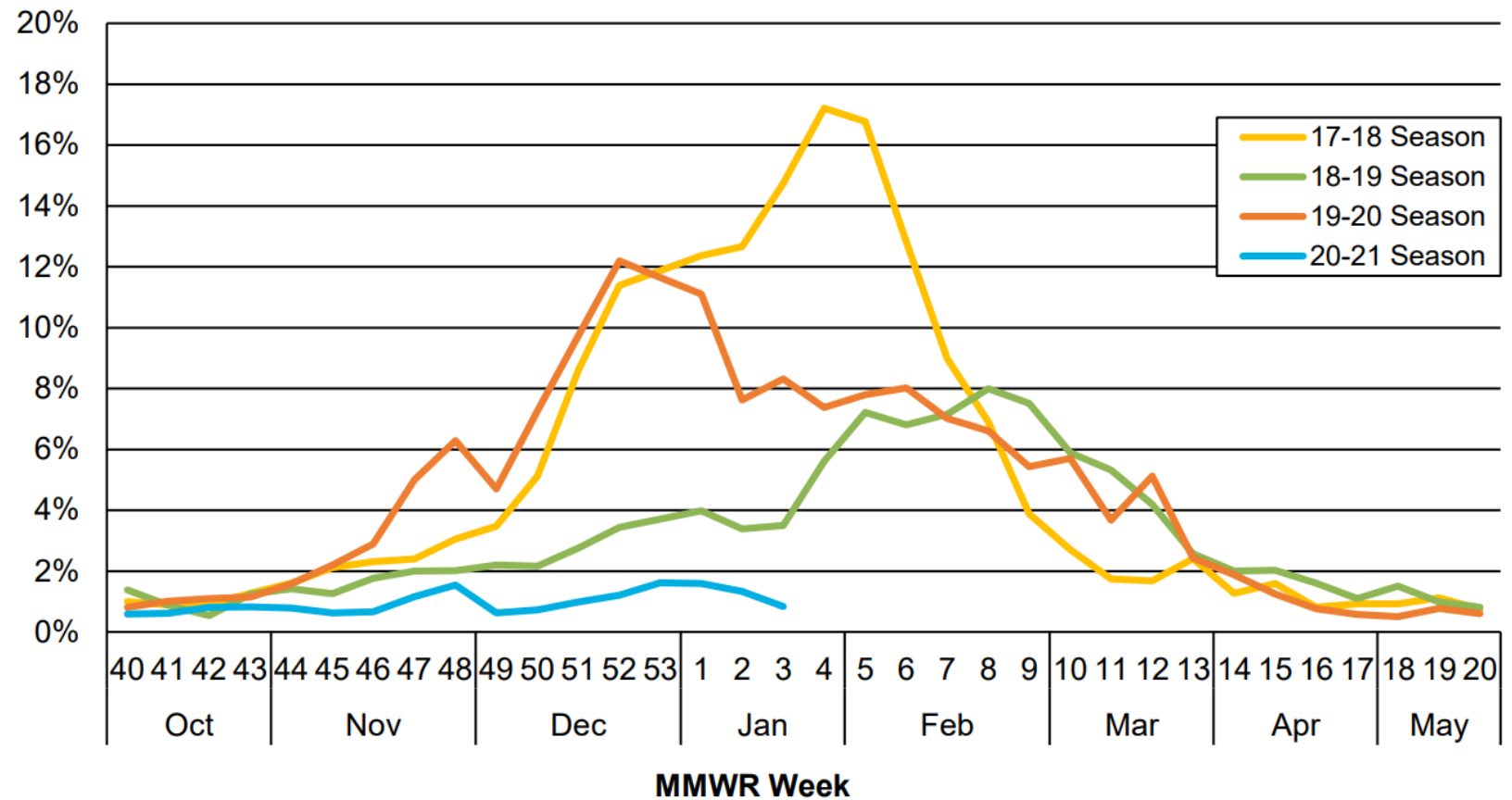


Travis County Influenza Report

	MMWR Week 03	Season to Date
Influenza Tests Performed	321	6730
Total Positive Influenza Tests	4	73
% Positive Influenza Tests	1.25%	1.08%
Positive Rapid Influenza A	1	20
Positive PCR Influenza A	0	0
Positive Rapid Influenza B	3	49
Positive PCR Influenza B	0	0
Positive Rapid Influenza A and B	0	4
Non-Differentiated Influenza	0	0

Travis County Influenza Report

Figure 2. Percentage of Visits Due to Influenza-like Illness Reported by Travis County Participants in ILINet: 2017-2021^{4,6,8,11,14}



COVID-19: Risk-Based Guidelines

Recommended thresholds 7-day average hospital admits		Practice Good Hygiene	Maintain Social Distancing	Wear Facial Coverings	Higher Risk Individuals Aged 65+, diabetes, high blood pressure, heart, lung and kidney disease, immunocompromised, obesity			Avoid Gatherings	Avoid Non-Essential Travel	Avoid Dining/ Shopping	Recommended Business Capacity
		Stay Home If Sick			Avoid Gatherings	Avoid Non-Essential Travel	Avoid Dining/ Shopping				
		Avoid Sick People									
0	Stage 1	•			Greater than 25		Except with precautions	Gathering size TBD			100%
< 10	Stage 2	•	•	•	Greater than 10		Except as essential	Greater than 25			75%
10 - 29	Stage 3	•	•	•	Social and greater than 10	•	Except as essential	Social and greater than 10			50% - 75%
30 - (50 - 90)*	Stage 4	•	•	•	Social and greater than 2	•	Except as essential	Social and Greater than 10	•		25% - 50%
> 50 - 90 *	Stage 5	•	•	•	Outside of household	•	Except as essential	Outside of household	•	Except as essential	Contactless options only (i.e. curbside, delivery)

Stage 5 Recommendations

- **No gatherings with anyone outside of your household**

- **Dining and shopping should be limited to essential trips**

- **Avoid non-essential travel**

- **Businesses are recommended to operate through contactless options (i.e. curbside, delivery)**



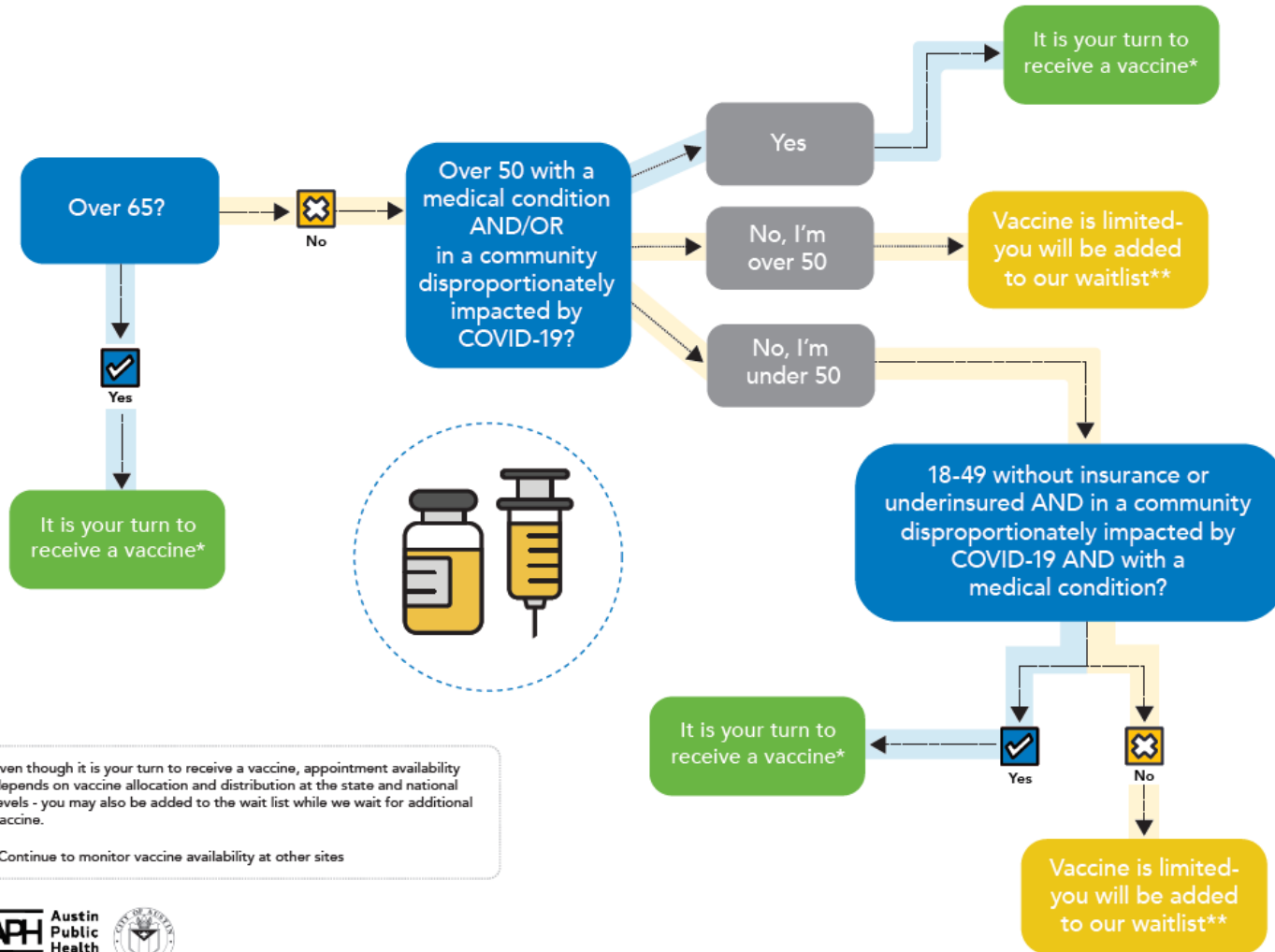
COVID-19

Joint Meeting for Austin City Council and Travis County Commissioner's Court February 2, 2021

Stephanie Hayden-Howard, LMSW
Austin Public Health Director



COVID-19 Vaccine Eligibility Flowchart



Vaccine Update

- APH received 12,000 vaccines
- Operated three vaccine sites last week
 - Two open
 - One closed
- Second dose of vaccines expected
 - APH will be contacting those who vaccinated in round 1
- System updates
- Mobile vaccines

Call Center Partnership

- Travis County call center established
- Assist with outbound calls for registered individuals
 - Individuals 80 years of age or older
 - Notify others that registered for appointments
- Agreement through March 2021
- Call center will notify residents

APH Priorities

- Providing vaccines each week - 12,000 allocation at three clinics
 - Fast, efficient and effective service at each location
 - Data entry and reports back to DSHS
 - Ensuring diversity by providing vaccines to people disproportionality affected by COVID
- Ensuring the registration system is working properly
 - Answering incoming calls
 - Making calls to residents to schedule appointments
 - Provide technical assistance for enrollment
- Testing
 - Three sites and at home testing available
 - Testing was discontinued at three sites (Givens, Montopolis and Walnut Creek Library) due to reassigning staff to vaccine PODs
- Epidemiology and Surveillance work
 - Case Investigations
 - Data entry of new cases
- Incident Command Teams
 - Education
 - Long Term Care facilities
- Enforcement efforts by Environmental Health team with others city staff (Fire, Code and APD)
- Ensuring staff are updating all existing dashboards
 - Staff is working on the vaccine dashboard
- Alternate Care Site
- Infusion medical treatments