

---

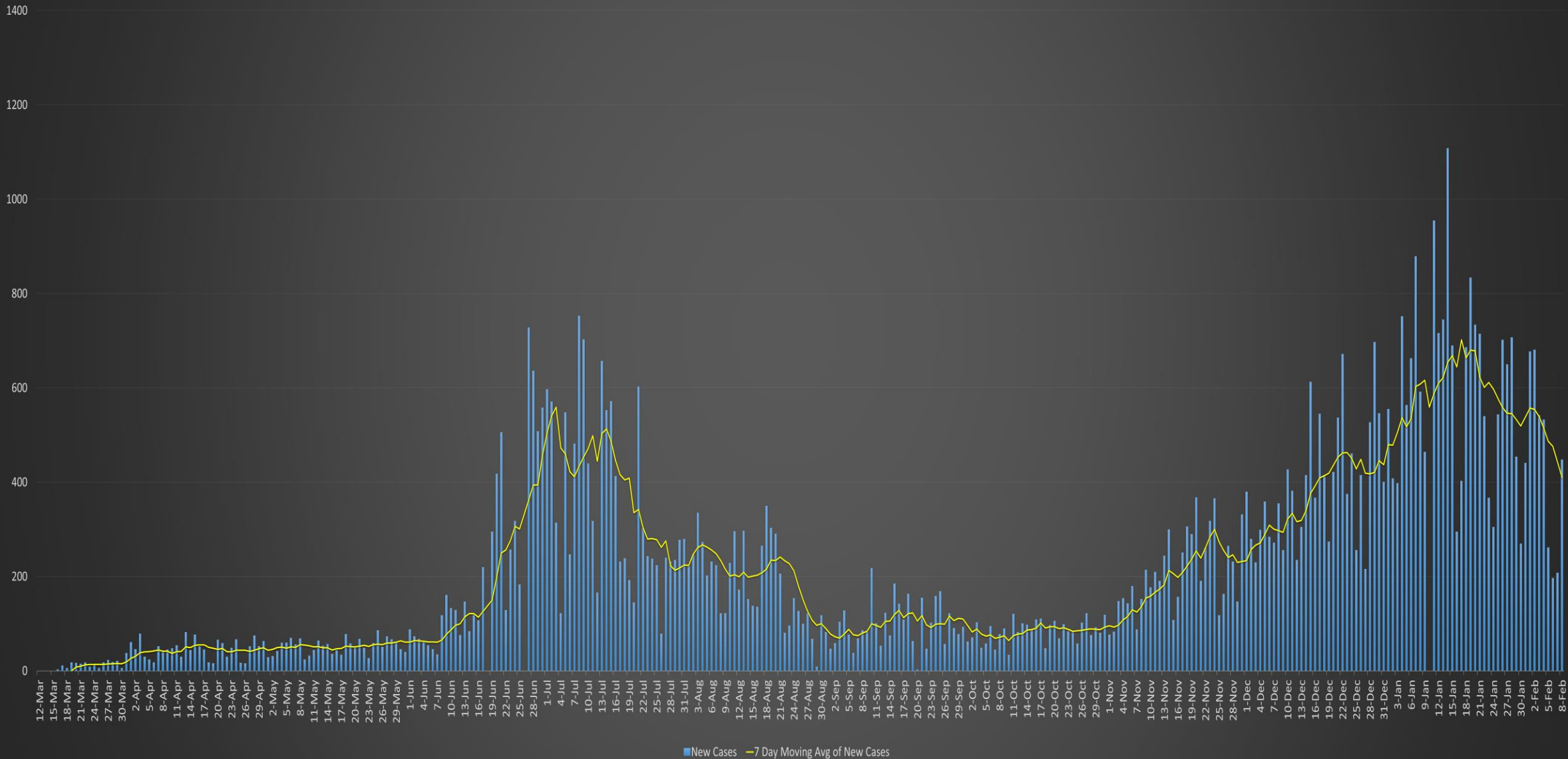
# COVID-19 Update

February 9, 2021

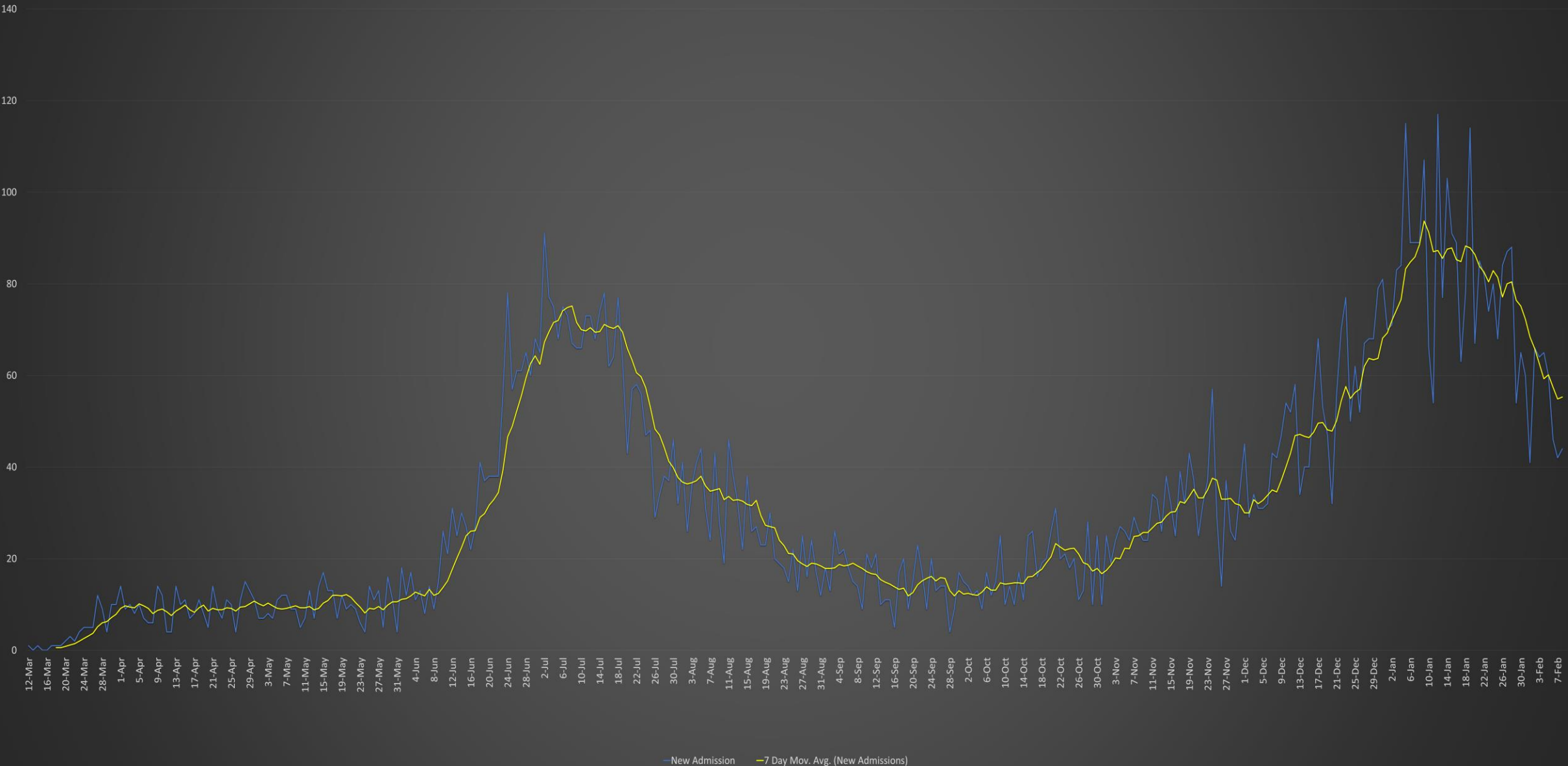
Austin Public Health

Mark Escott, MD, MPH, Interim Health Authority

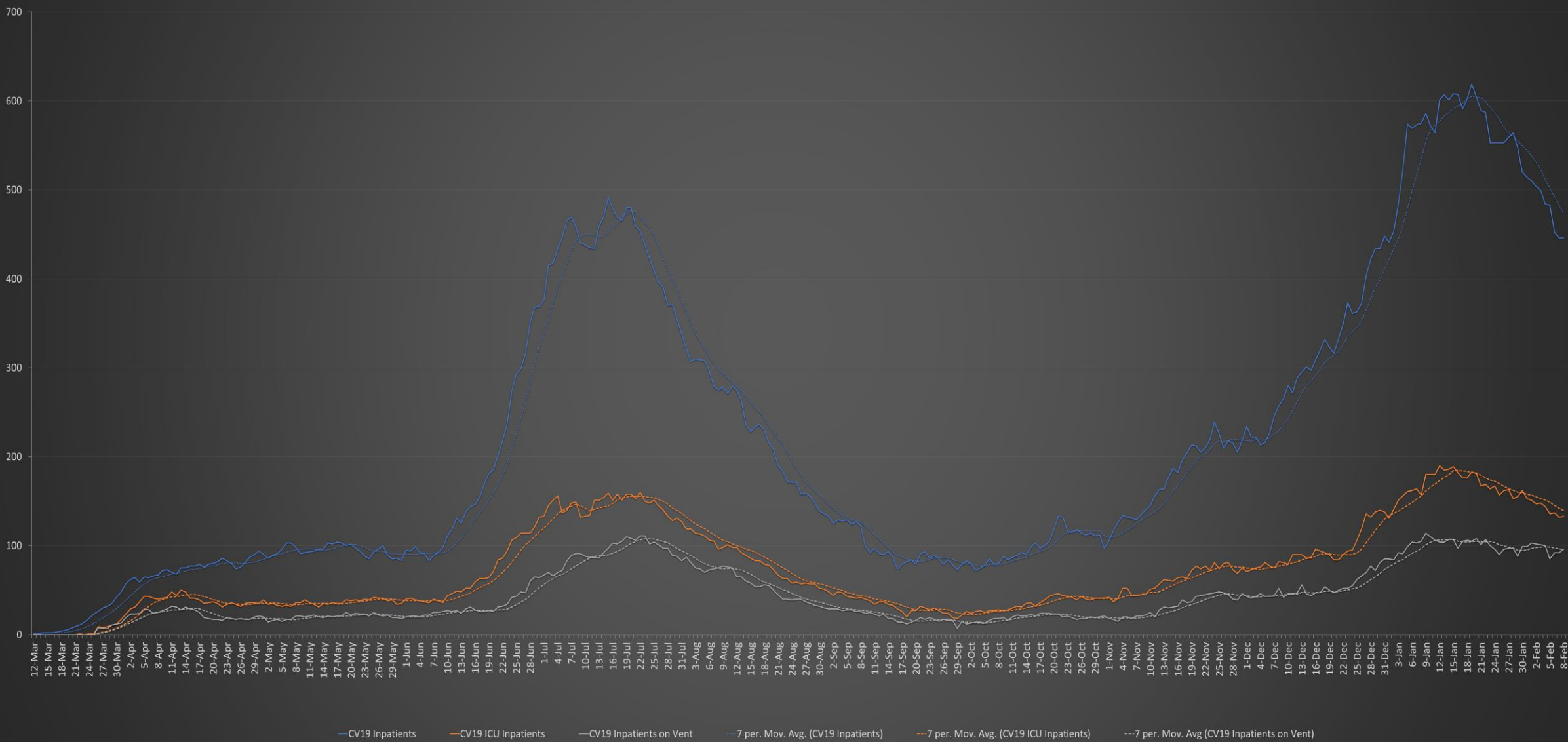
# COVID-19 Travis County New Confirmed Cases



# COVID-19 Austin MSA New Admissions



COVID-19 AUSTIN MSA CURRENT HOSPITALIZATIONS, ICU ADMISSIONS, AND VENTILATOR USE





# Regional Infusion Center

- TDEM opened on 1/6
- 546 patients treated
- Current capacity: 90/day
- Regional Call Center



# Austin/Travis County Alternate Care Site

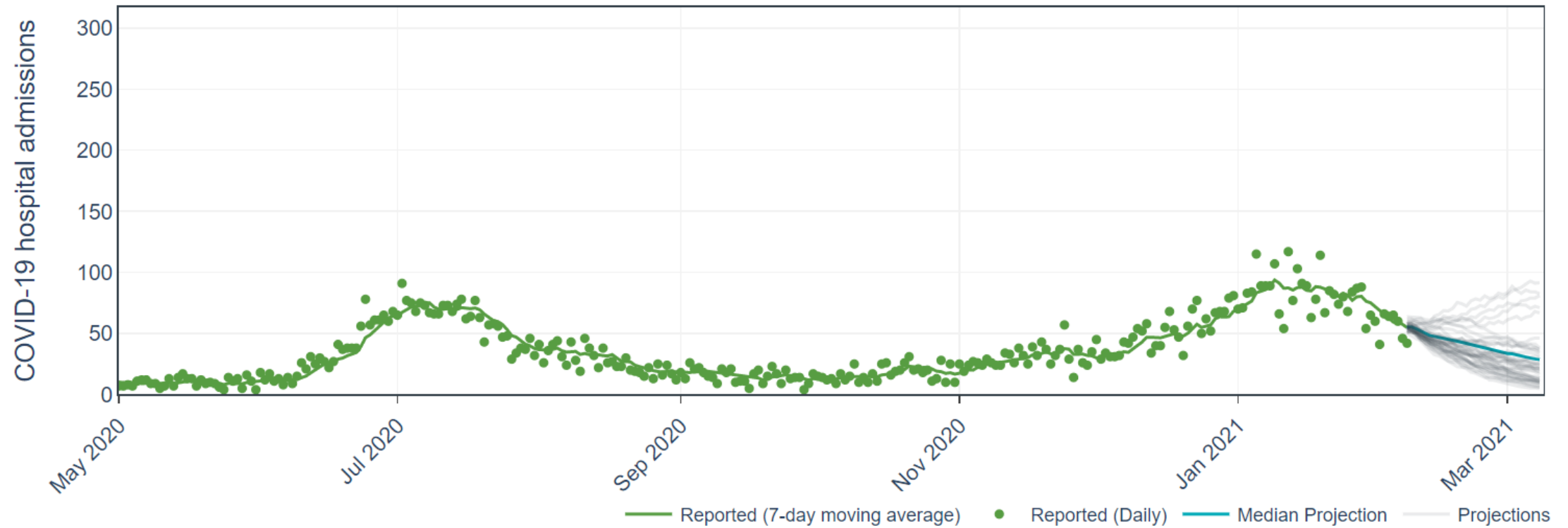
- 39 patients in ACS on 2/8
- 64 patients treated and discharged
- Capacity to care for up to 50 patients.
- Patients will be referred from hospitals only after they have been determined to be stable for transfer
- Patient population: Low acuity → Moderate acuity



# COVID Hospital Surge – Metropolitan

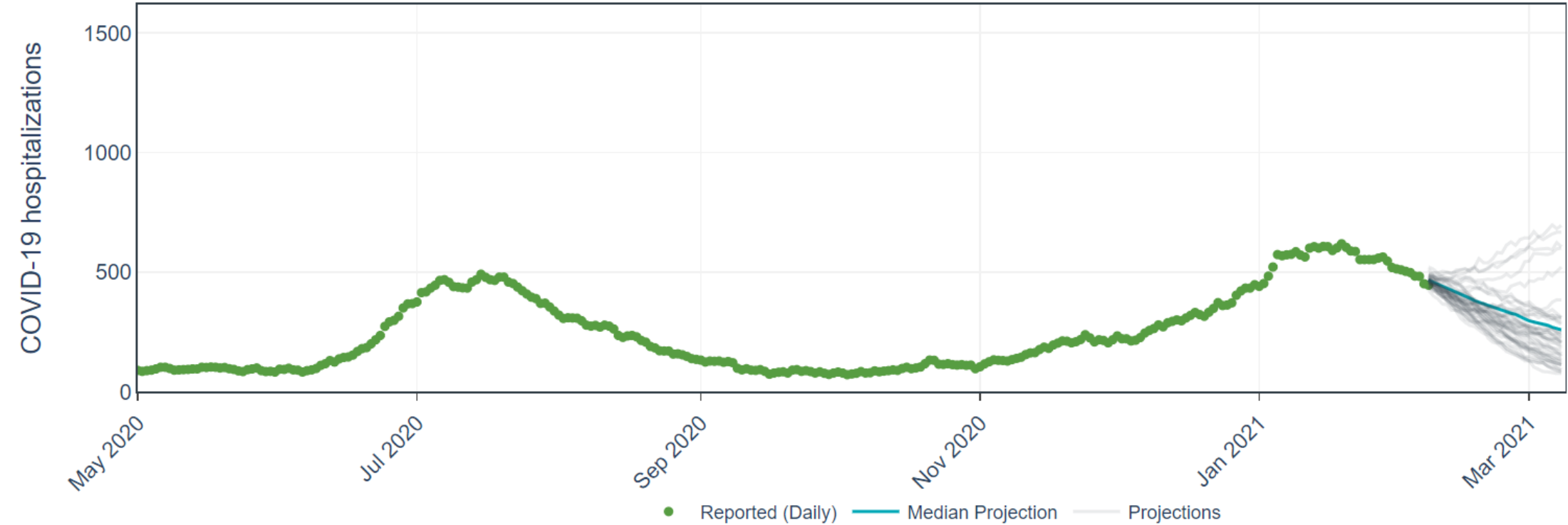
- **Austin (TSA O): 14.59% → 12.19% → 10.67%**
- **Houston (TSA Q): 18.69% → 17.09% → 15.4%**
- **El Paso (TSA I): 19.0% → 17.38% → 17.92%**
- **Dallas/FW (TSA E): 21.8% → 18.82% → 16.88%**
- **San Antonio (TSA P): 23.72% → 19.66% → 15.76%**

Daily COVID-19 Hospital Admissions in the Austin-Round Rock MSA (7 day moving average)

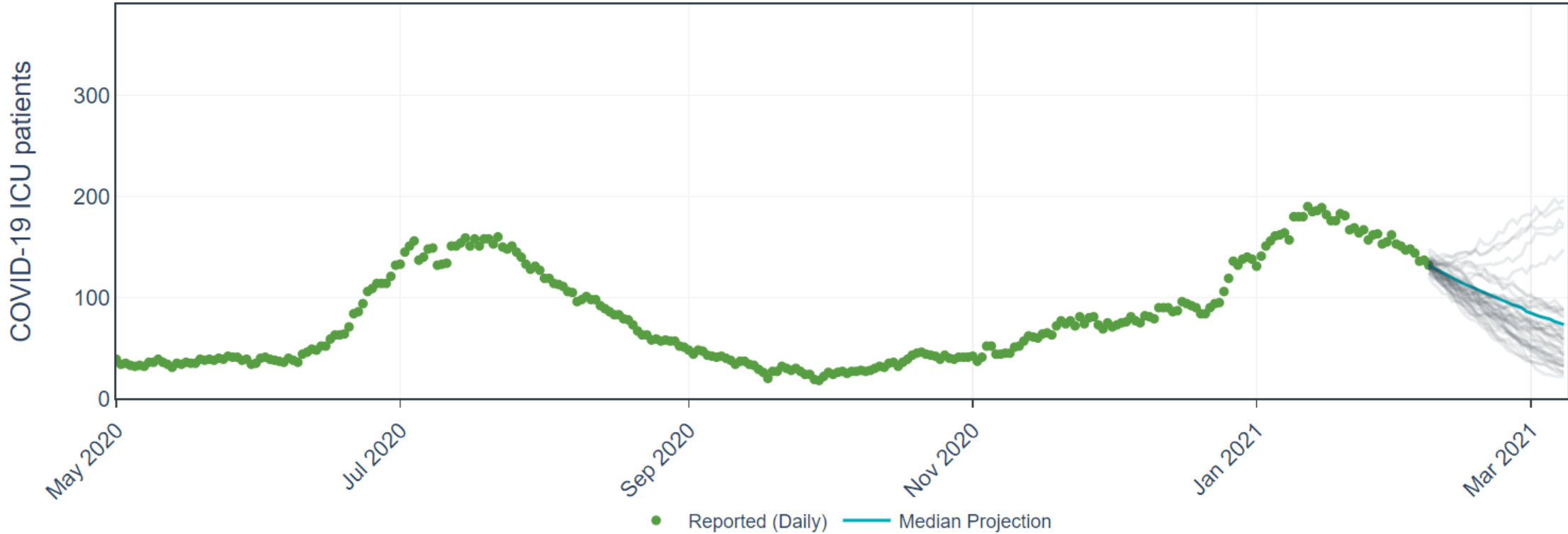




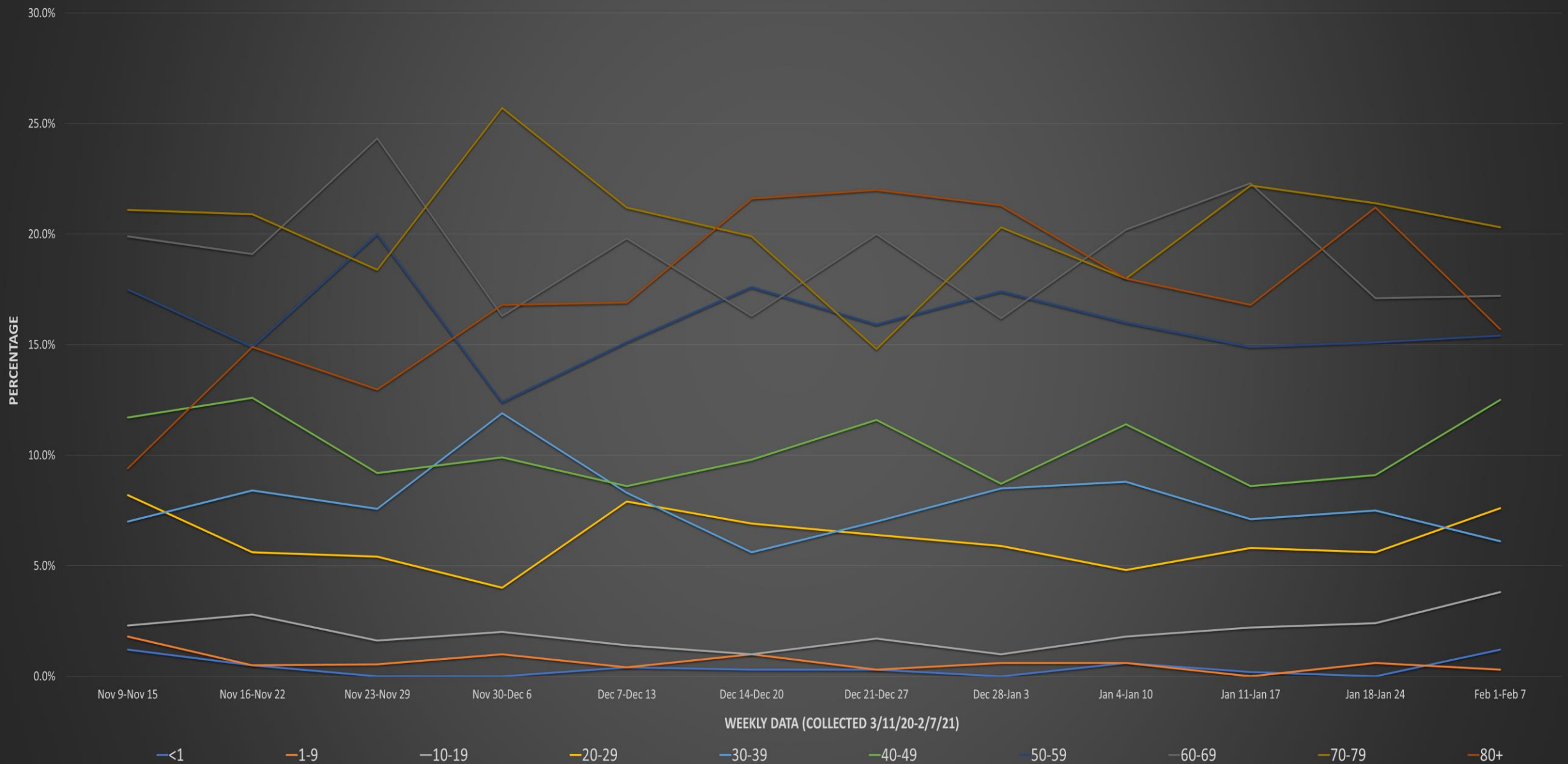
Daily COVID-19 Hospitalizations in the Austin-Round Rock MSA



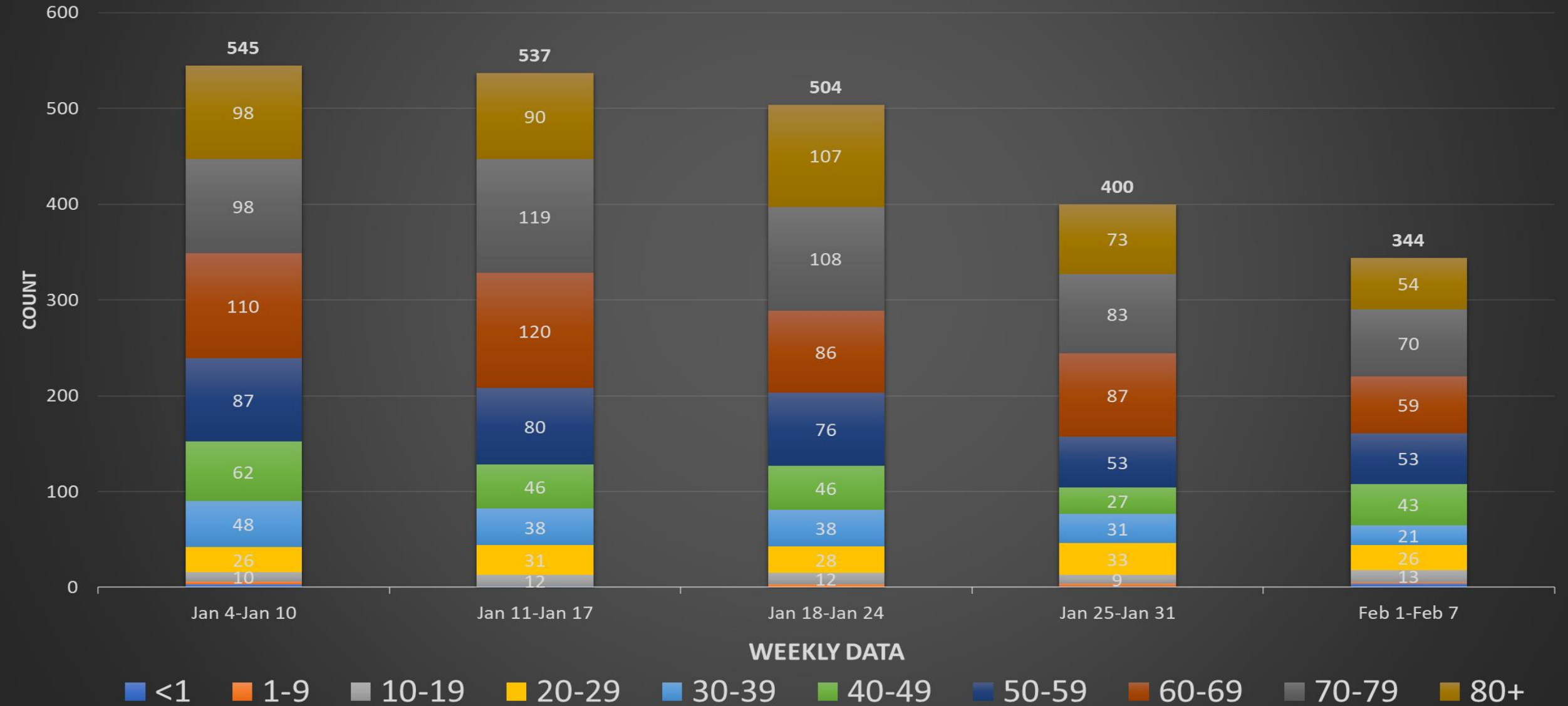
Daily COVID-19 ICU patients in the Austin-Round Rock MSA



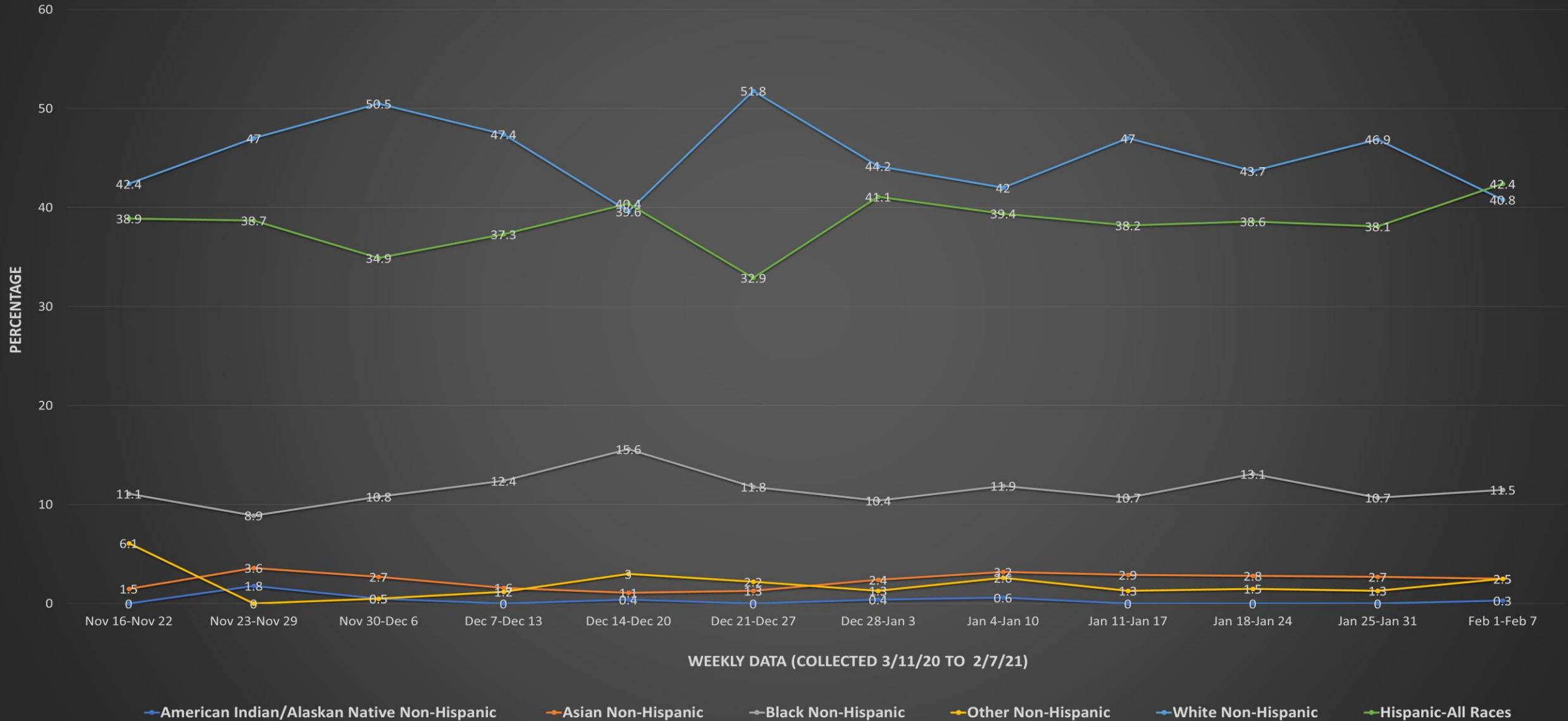
# City of Austin - Travis County COVID-19 Hospitalization by Age Group (Austin MSA)



# City of Austin - Travis County COVID-19 Count of Weekly Hospitalizations by Age Group (Austin MSA)

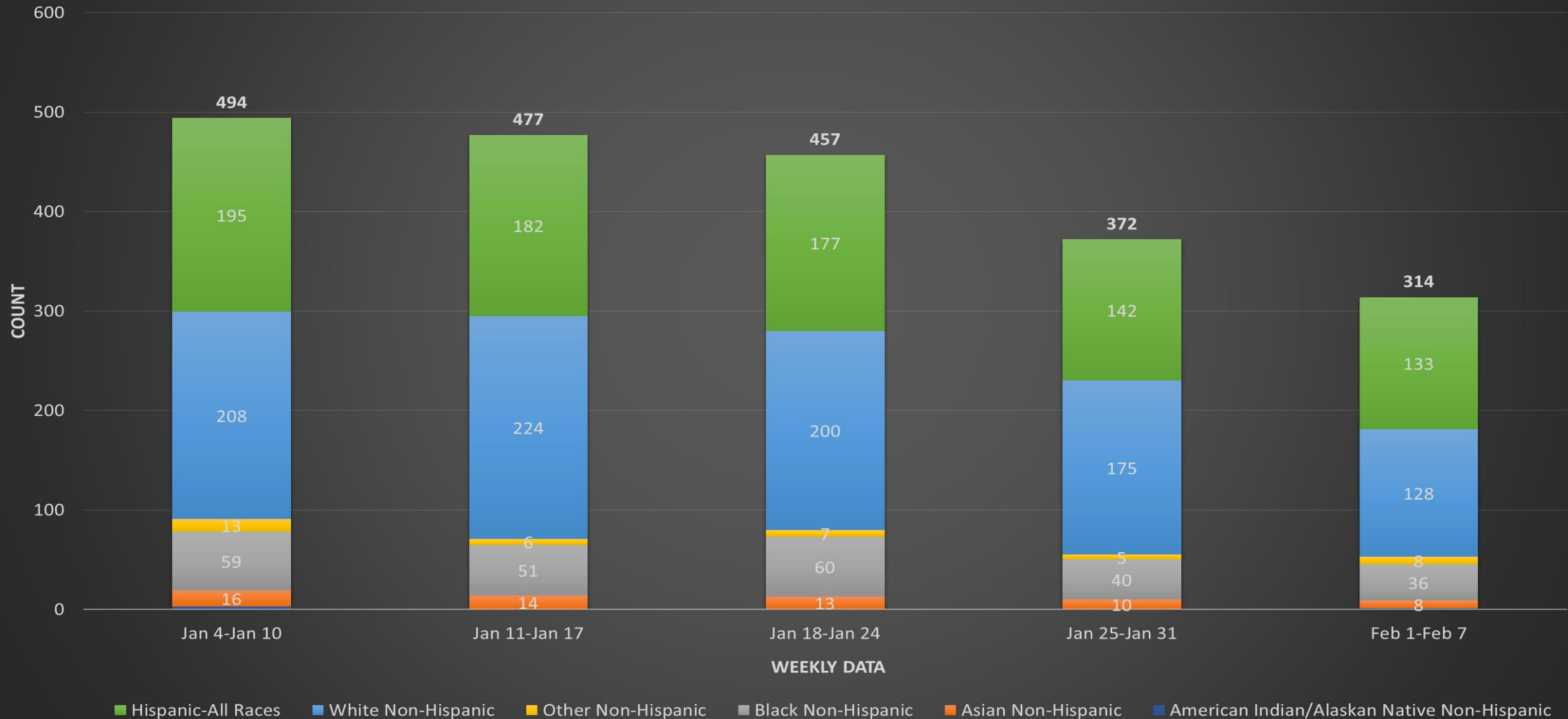


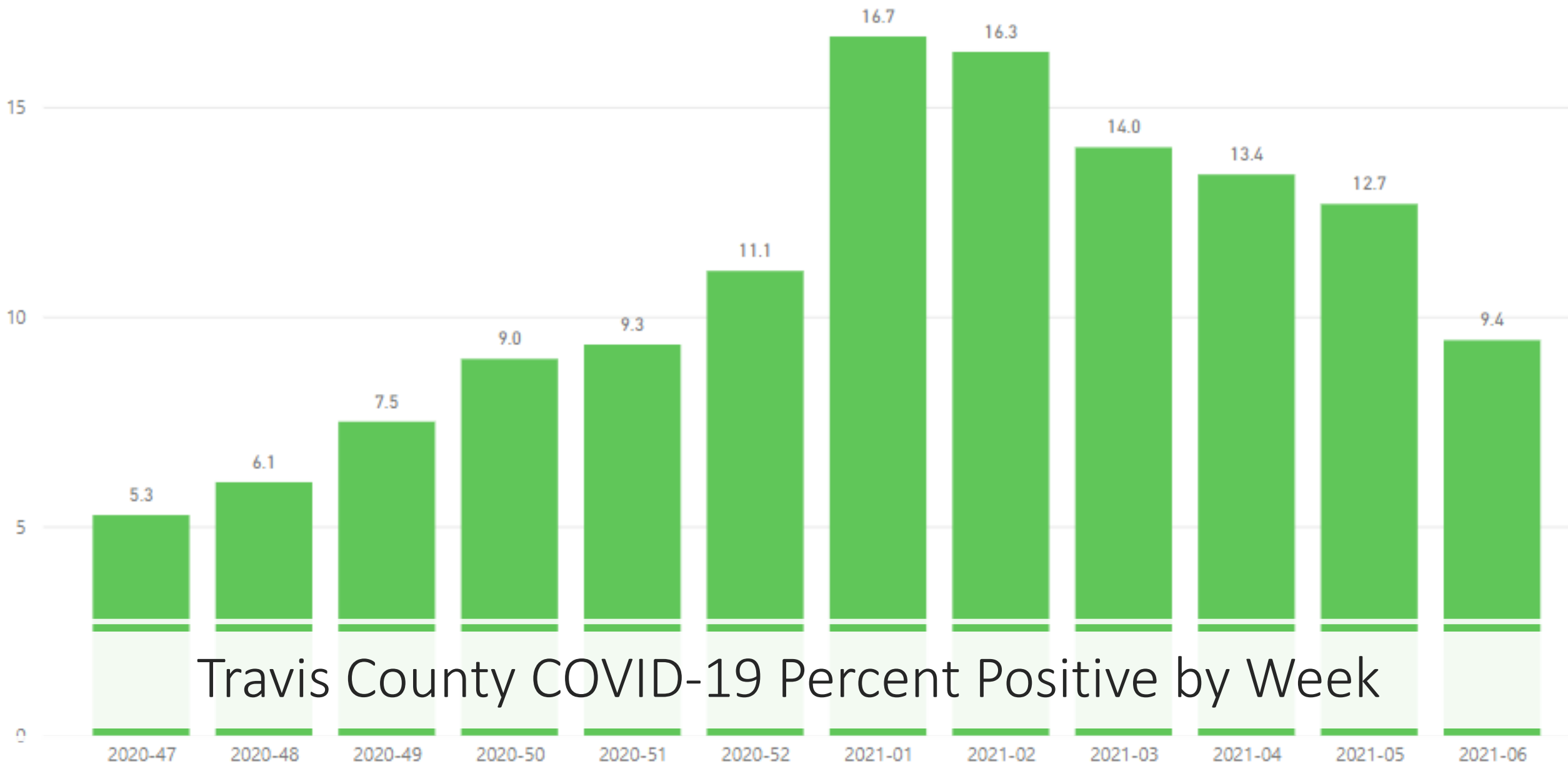
# City of Austin - Travis County COVID-19 Hospitalization by Race & Ethnicity (Austin MSA)





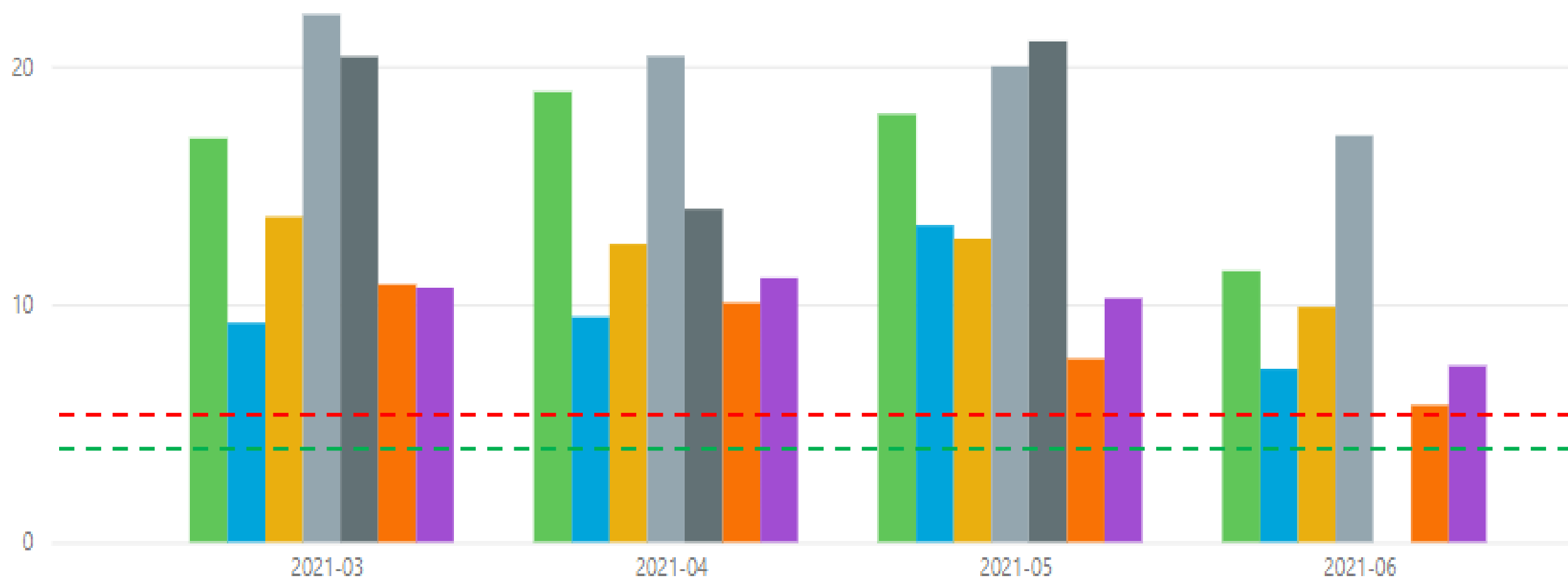
# City of Austin - Travis County COVID-19 Count of Weekly Hospitalizations by Race/Ethnicity (Austin MSA)



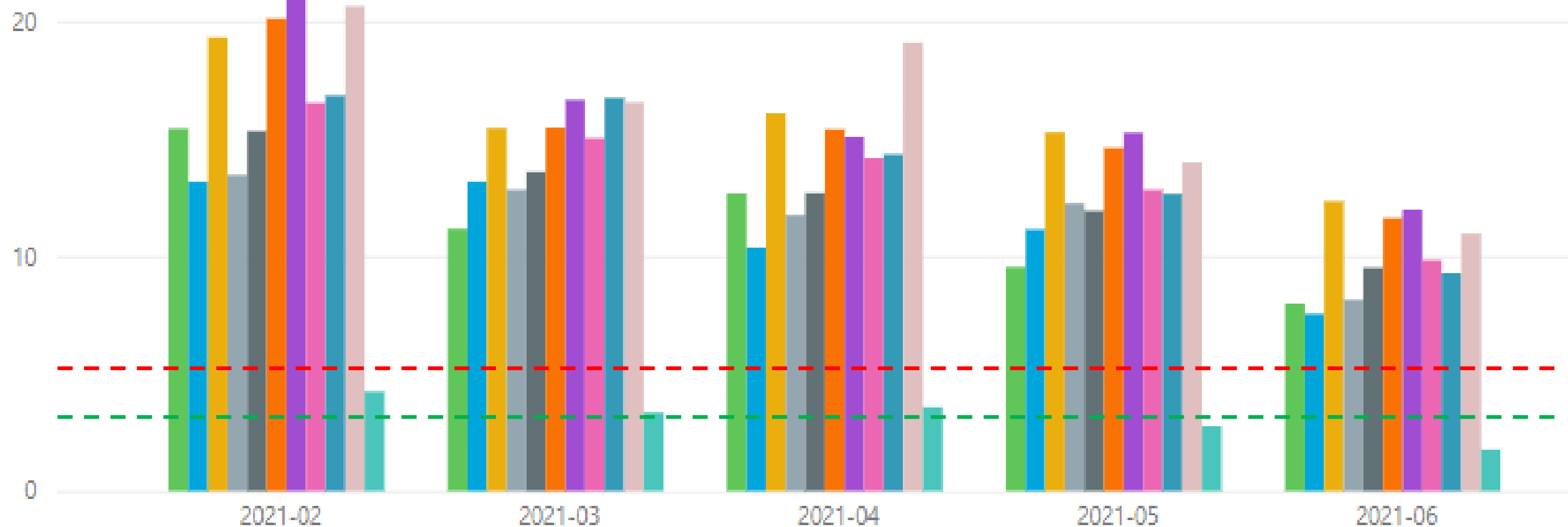


Travis County COVID-19 Percent Positive by Week

Race/Ethnicity 
 ● American Indian or Alaska Native 
 ● Asian 
 ● Black or African American 
 ● Hispanic or Latino 
 ● Native Hawaiian or Other Pacific Islander 
 ● Other 
 ● White



Age Group at Collection    <1   01-09   10-19   20-29   30-39   40-49   50-59   60-69   70-79   80+   Unknown



# Positivity in School- aged Children 1/31-2/6

High School: 13.9%

Middle School: 12.8%

Elementary School: 8.1%

Preschool: 7.3%



# Travis County Schools Report: 2/1-2/7

## By District—Self-reported Cases of On-Campus Individuals: **TOTAL= 254 cases**

**Note:** Schools with no self-reported cases for the preceding week are not required to submit a report to APH.

District	Student Cases <sup>1</sup>	Staff Cases <sup>2</sup>	Other Cases <sup>3</sup>
Austin ISD	27	17	2
Charter School	9	5	0
Del Valle ISD	8	6	0
Eanes ISD	32	4	0
Elgin ISD	0	2	0
Lago Vista ISD	2	1	0
Lake Travis ISD	8	3	0
Leander ISD	8	0	0
Manor ISD	12	5	1
Pflugerville ISD	49	18	1
Private School	15	3	0
Round Rock ISD	8	7	0
Texas State School	0	1	0
<b>Total</b>	<b>178</b>	<b>72</b>	<b>4</b>

# Travis County Schools Report: 2/1-2/7

**By District—Close Contacts undergoing Quarantine: TOTAL= 1618 close contacts**

**Note:** no close contact data received from Leander ISD or St. Michael's Catholic Academy

District	Students in Quarantine	Staff in Quarantine
Austin ISD	262	56
Charter School	62	13
Del Valle ISD	23	15
Eanes ISD	233	16
Elgin ISD	0	0
Lago Vista ISD	3	0
Lake Travis ISD	32	5
Leander ISD	No data	No data
Manor ISD	83	21
Pflugerville ISD	600	73
Private School	57	3
Round Rock ISD	41	15
Texas State School	4	1
<b>Total</b>	<b>1400</b>	<b>218</b>



# Austin - Travis County COVID-19 Long Term Care Facility Weekly Dashboard

For more information on COVID-19 visit:  
<http://austintexas.gov/covid19>

Reported by Austin Public Health: Data  
Refreshed: 2/4/2021  
All numbers are provisional and subject to



## Accession Estates (AL)

Cases within last 14 days: 0

Cases within last 28 days: 2

## Arbor Terrace Lakeway (AL)

Cases within last 14 days: 4

Cases within last 28 days: 15

## Arden Courts (AL)

Cases within last 14 days: 0

Cases within last 28 days: 6

## Auberge at Bee Caves (AL)

Cases within last 14 days: 0

Cases within last 28 days: 3

## Auberge at Onion Creek (AL)

Cases within last 14 days: 2

Cases within last 28 days: 6

## Cases

3,264

## New Cases Within Last 14 Days

123

## New Cases Within Last 28 Days

543

## Deaths

263

## Travis County Percent Positivity

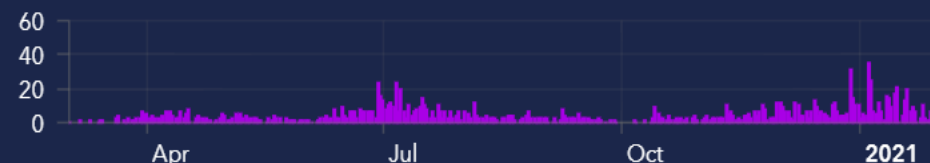
11.2%

Data from January 14-January 27, 2021

## Resident Cases for All Travis County LTCFs



## Staff Cases for All Travis County LTCFs



Resident/Staff Epi Curve

Cumulative Count, & Resources

Hover over segment to see details

## Resident Ethnicity



## Resident Age Group



## Staff Ethnicity



## Staff Age Group



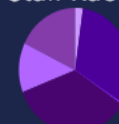
## Resident Race



## Resident Sex



## Staff Race



## Staff Sex



Demographics

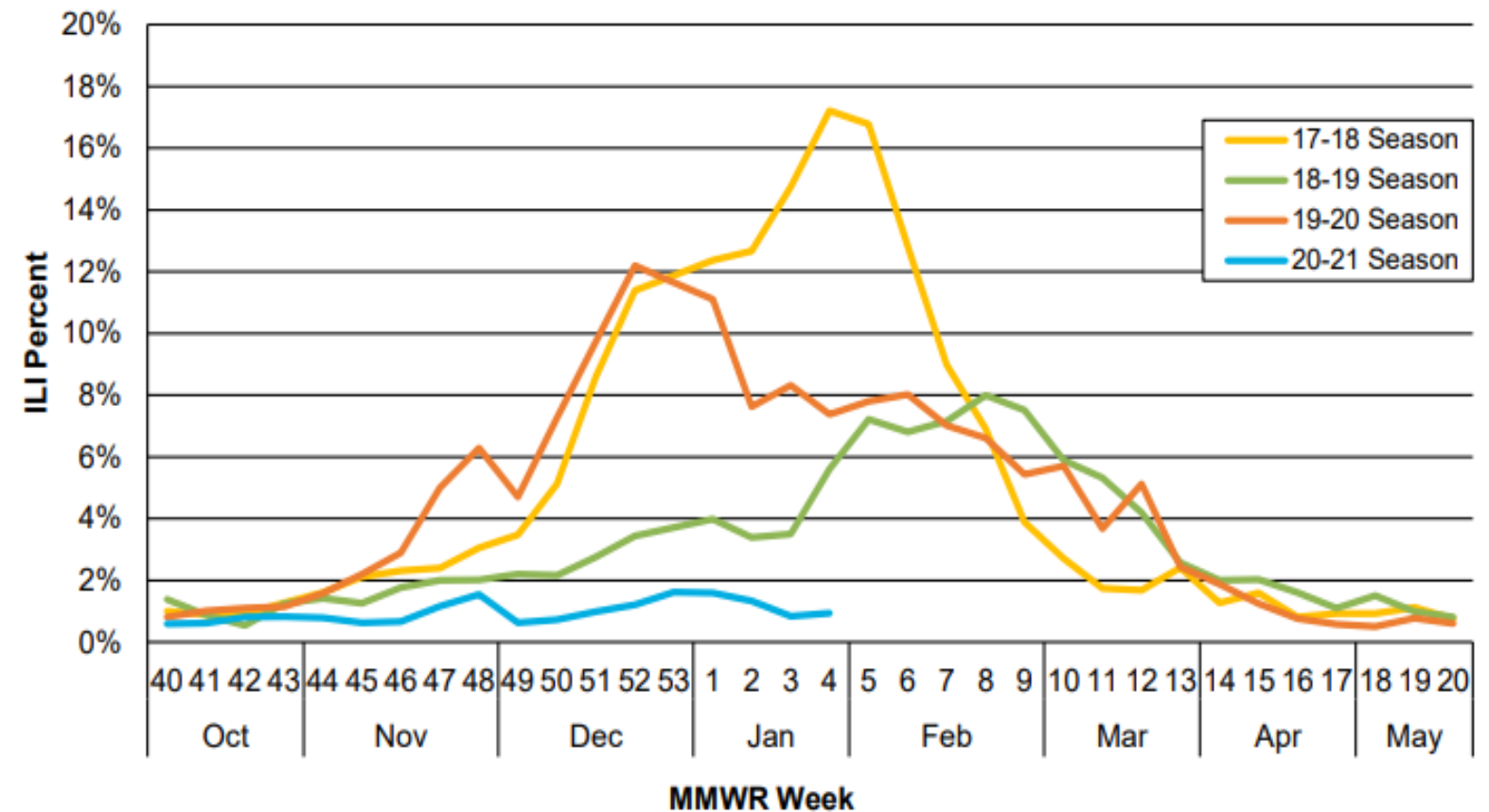
Notes

# Travis County Influenza Report

	MMWR Week 04	Season to Date
Influenza Tests Performed	328	7133
Total Positive Influenza Tests	4	77
% Positive Influenza Tests	1.22%	1.08%
Positive Rapid Influenza A	1	21
Positive PCR Influenza A	0	0
Positive Rapid Influenza B	3	52
Positive PCR Influenza B	0	0
Positive Rapid Influenza A and B	0	4
Non-Differentiated Influenza	0	0

# Travis County Influenza Report

**Figure 2. Percentage of Visits Due to Influenza-like Illness Reported by Travis County Participants in ILINet: 2017-2021<sup>4,6,8,11,14</sup>**





# COVID-19: Risk-Based Guidelines

Recommended thresholds  7-day average hospital admits		Practice Good Hygiene	Maintain Social Distancing	Wear Facial Coverings	Higher Risk Individuals Aged 65+, diabetes, high blood pressure, heart, lung and kidney disease, immunocompromised, obesity			Avoid Gatherings	Avoid Non-Essential Travel	Avoid Dining/ Shopping	Recommended Business Capacity
		Stay Home If Sick			Avoid Gatherings	Avoid Non-Essential Travel	Avoid Dining/ Shopping				
		Avoid Sick People									
0	Stage 1	•			Greater than 25		Except with precautions	Gathering size TBD			100%
< 10	Stage 2	•	•	•	Greater than 10		Except as essential	Greater than 25			75%
10 - 29	Stage 3	•	•	•	Social and greater than 10	•	Except as essential	Social and greater than 10			50% - 75%
30 - (50 - 90)*	Stage 4	•	•	•	Social and greater than 2	•	Except as essential	Social and Greater than 10	•		25% - 50%
> 50 - 90 *	Stage 5	•	•	•	Outside of household	•	Except as essential	Outside of household	•	Except as essential	Contactless options only (i.e. curbside, delivery)

# Stage 4 Recommendations

- **High-risk individuals should stay home, except for essential trips such as buying groceries**

- **Everyone should limit non-essential travel**

- **All interactions outside of the household should include masking and 6-ft distancing**

- **Businesses should reduce operating capacity to 25-50%**

- **Schools should limit attendance at sporting events to players, coaches, and parents**

# Moderna COVID-19 Second Dose

- CDC updated guidance on January 21, 2021 extending the window for the second dose of the Moderna and Pfizer vaccines to **42 days**
- Vaccine efficacy continues to improve with time following the vaccine administration based on the currently available data
- Vaccine Efficacy of the First Dose:
  - **50.8%:** after first dose up to 14 days following the first dose vaccination
  - **92.1%:** > 14 days following the first dose vaccination
  - **80.2%:** total efficacy in those only receiving a single dose
  - Limitation: this was not a randomized arm of the trial involving only 2,000 participants



# COVID-19 Update

## February 9, 2021

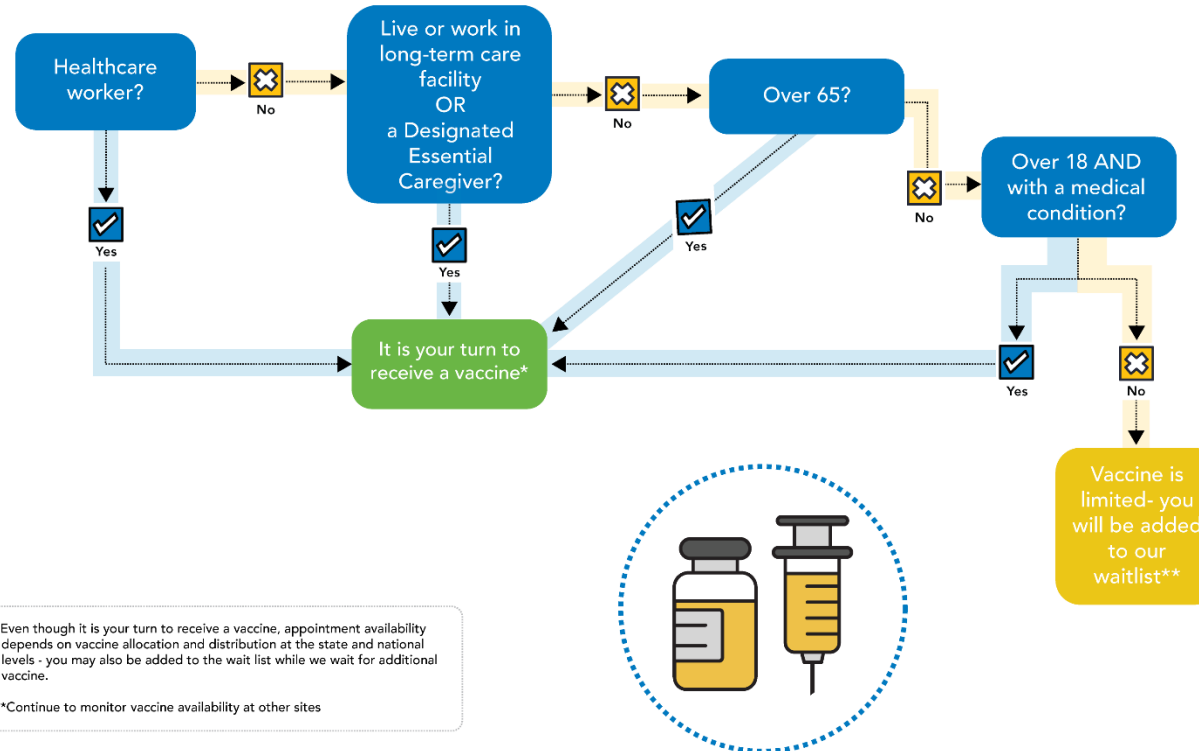
---

STEPHANIE HAYDEN-HOWARD

AUSTIN PUBLIC HEALTH DIRECTOR



# COVID-19 Vaccine Eligibility Flowchart

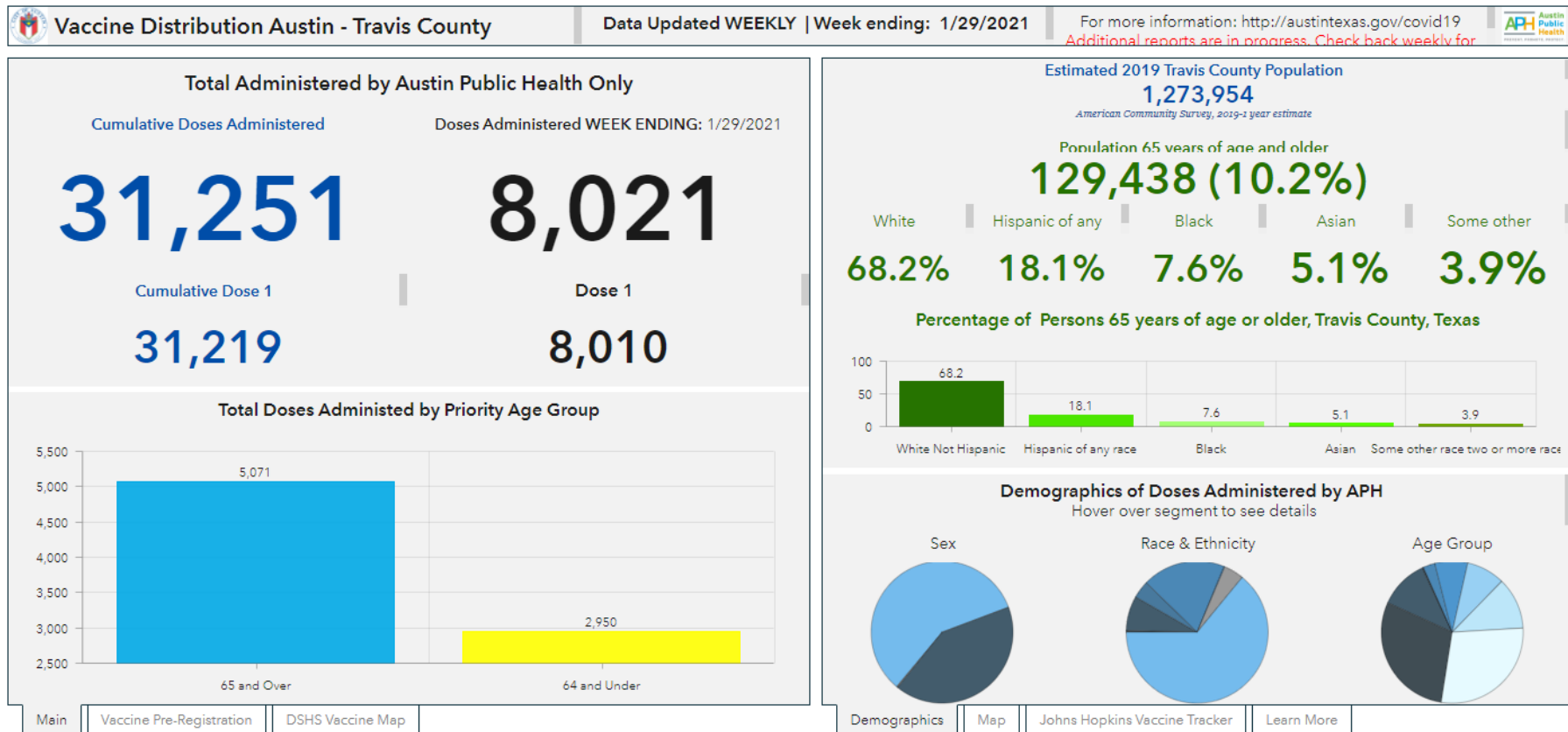


## UPDATE to Flowchart



# COVID-19 Vaccine Distribution Dashboard

AGE, RACE/ETHNICITY, ZIP CODE, POPULATION



# Call Center Partnerships - Update

---

## **Proactive outbound calls:**

- Staff from the Travis County Clerk's Office and APH
- Proactively call individuals, especially 80 years of age or older or those in 1B who do not internet access
- Register and schedule appointments

## **Responding to incoming calls**

- Training 311 staff to serve as ambassadors
- Assist with incoming calls to create accounts
- Register in the system

# Vaccine Update

- DSHS recommends to wait to schedule appointments until the vaccine is physically delivered. This applies to first and second doses.
  - Avoids confusion/frustration with cancelling appointments if the vaccine does not arrive in time.
- Appointments open on Tuesdays and Thursdays (times vary) to those who qualify as 1A or 1B.
- Advanced notice provided to 80 years + to offer earlier opportunity to sign up.
- Appointments filling within 2 hours of opening the time slots.
- This week, APH received another 12,000 vaccines designated for 1<sup>st</sup> dose.

# Vaccine Update: Second Dose

- Per the CDC, 2<sup>nd</sup> dose administered a few days or even a week late will not impact its effectiveness.
- We will reach out to individuals who received their first doses from APH to schedule their second shot.
- Vaccine providers are issued 2<sup>nd</sup> doses equal to the 1<sup>st</sup> doses administered.
  - We are committed to making sure that those who received their 1<sup>st</sup> dose from APH also receive their 2<sup>nd</sup> dose from APH.
  - If you received your 1<sup>st</sup> dose from a different provider, please reach out to that provider to schedule your 2<sup>nd</sup> dose appointment.

# Operational Update

## Registration System Enhancements Underway

- Improved design/layout
- Text notification

## Mobile Vaccines

- Working with community non-profit partners to identify homebound residents

## Home Referral

- Working with community organizations to identify those who are homebound

# APH SECOND Dose: What to do while you wait

- **Make sure you are registered into the APH portal**
- **APH staff will contact you if you are 28 days past your first dose**
- **Look out for emails, texts or phone calls from APH**
  - Second dose appointments will be available separately from those who are seeking a first appointment
- **Appointments may not be available after your first notification. As soon as more appointments are available, we will contact those who didn't schedule**