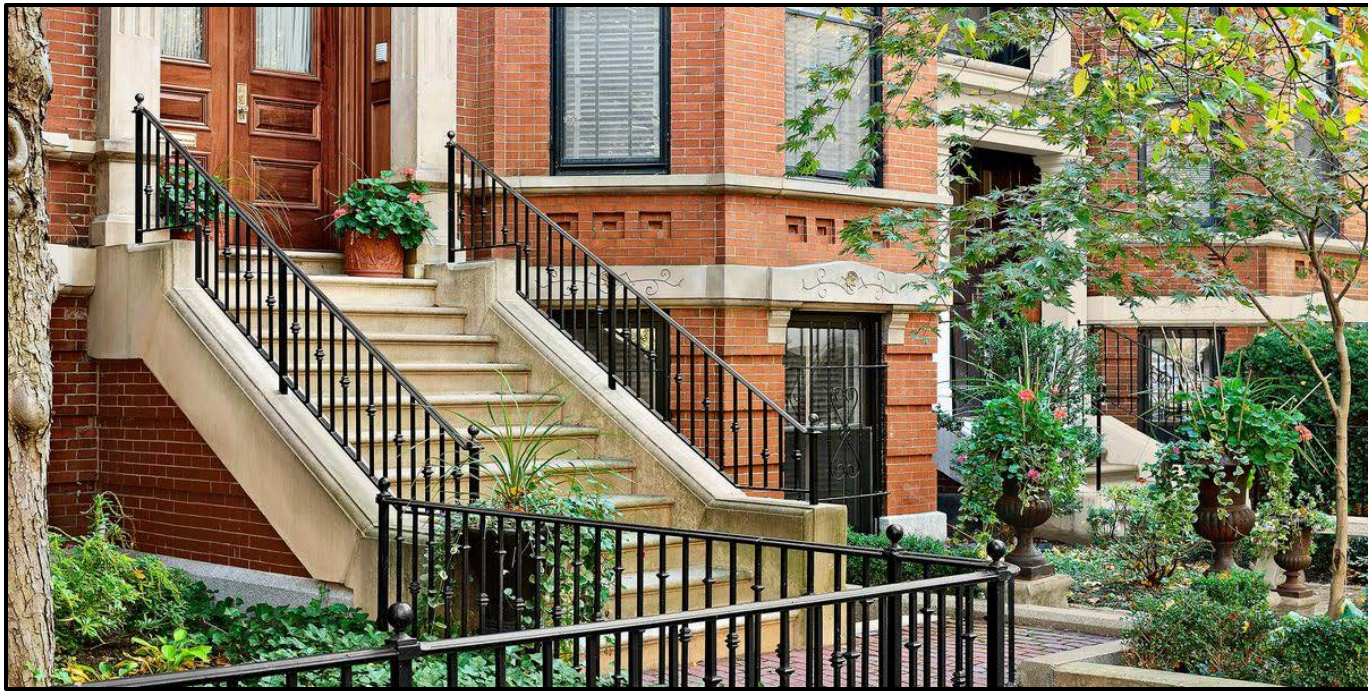




Development
CITY OF AUSTIN
SERVICES DEPARTMENT

Building a Better and Safer Austin Together

Flat-top Fence



Purpose

To provide an update regarding revised language for flat-top fences, and discuss next steps.

Next Steps

- Staff recommendation to move forward:
 - A resolution may be sent by the board to City Council, directing the City Manager to pursue a code amendment after obtaining stakeholder engagement.
 - Board can consider tabling discussion until after the 2021 code meetings.

Proposed Language to Prevent Entrapment Only

All fences with a height of less than 6 feet shall not be constructed with exposed pickets or other decorative features at the top of the fence. All fences with exposed pickets or other decorative features shall comply with a design that does not create a ladder effect as per the following:

1. Solid fences that do not have openings shall not contain indentations or protrusions that form handholds and footholds, except for normal construction tolerances and tooled masonry joints.
2. Where the fence is composed of horizontal and vertical members, the distance between the top of the horizontal members shall not be less than 45 inches. Spacing between vertical members shall not exceed 4 inches. Where there are decorative cutouts or decorative features within vertical members, spacing within the cutouts or decorative features shall not exceed $1\frac{3}{4}$ inches in width.
3. The maximum opening formed by a chain link fence shall not be more than $1\frac{3}{4}$ inches. Where the fence is provided with slats fastened at the top and bottom that reduce the openings, such openings shall not be greater than $1\frac{3}{4}$ inches.
4. Where the fence is composed of diagonal members, the maximum opening formed by the diagonal members shall not be greater than $1\frac{3}{4}$ inches. The angle of diagonal members shall not be greater than 45 degrees (0.79 rad) from vertical.

Exceptions:

1. Fences where exposed vertical members are spaced no less than 6 inches apart.
2. Other fence designs approved by the building official that prevent entrapment on top of the fence.

Does It Meet Entrapment Intent?



If this fence is less than 6 feet in height, and horizontal members are less than 45 inches apart, it could be in compliance if the finials are spaced no less than 6 inches apart.

Does It Meet Entrapment Intent?



Horizontal members less than 45 inches apart? Less than 6 feet in height?
Vertical members no less than 6 inches apart?

Proposed Language to Prevent Entrapment & Impalement

All fences less than 6 feet in height shall not be constructed with exposed vertical pickets or other vertical decorative features at the top of the fence.

Exceptions:

- Fences where the spacing between pickets or balusters is no greater than ½ inch apart; or
- Other fence designs approved by the building official that prevent entrapment and impalement on top of the fence.

Meet the Intent



Questions/Comments

