

SH 130 Municipal Management District – City Consent to Issue Bonds and Assess Taxes

Environmental Commission

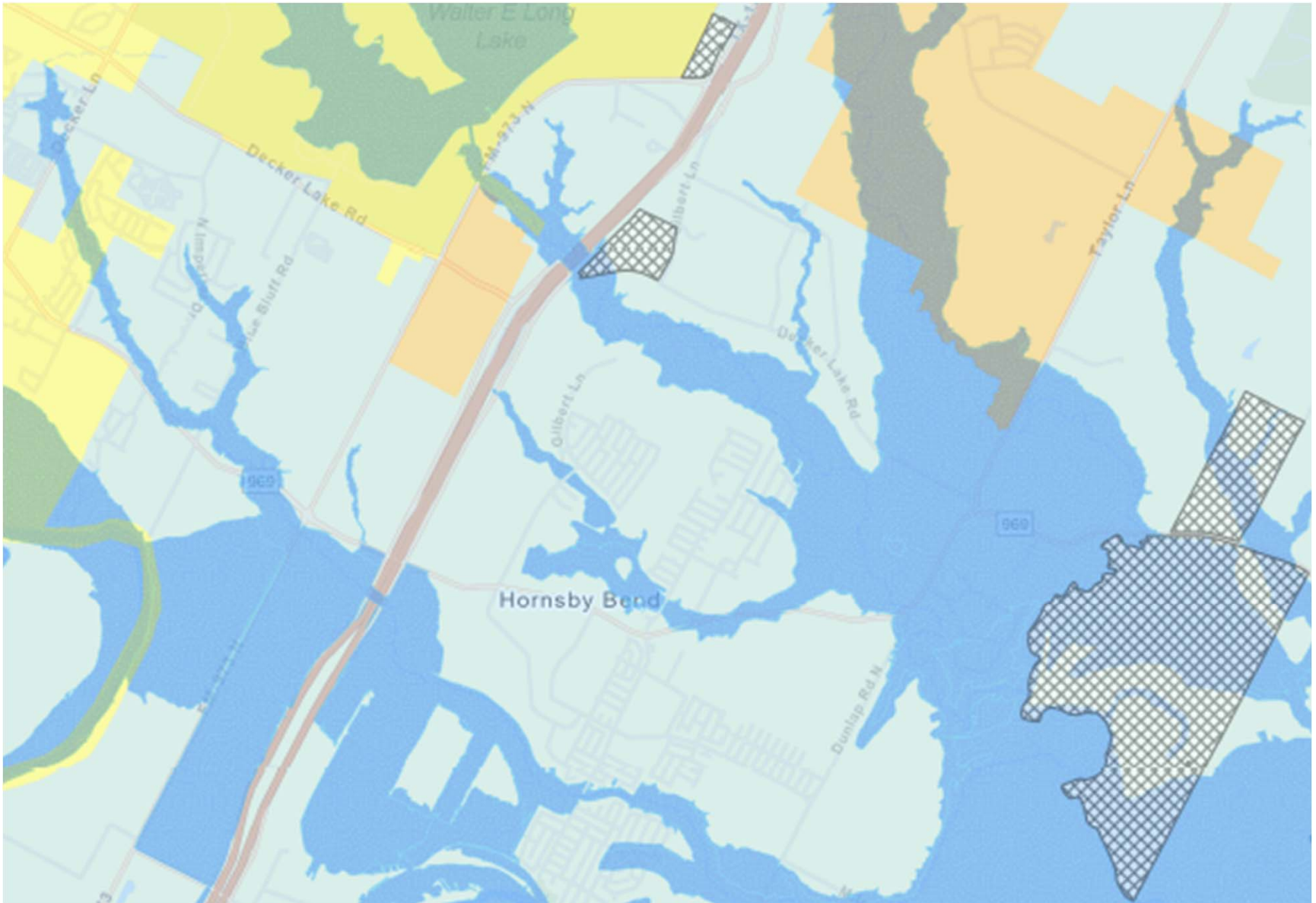
March 3, 2021

Overview

- Municipal Management Districts
 - Type of special district formed usually by special legislation
 - Wide potential range of powers defined within the special legislation
 - Independent from local governments but may contract with cities to develop land and provide public services
- Consider a petition for City consent from the SH 130 Municipal Management District to:
 - Issue bonds for infrastructure development
 - Assess taxes, including local sales and use taxes and hotel occupancy taxes
- **The Environmental Commission is asked to make a recommendation on the request for City consent the District's request**

Subject Tract

- Initial land designated by the legislature includes 1,138 acres
- Initial large acreage located generally east of SH 130 with two smaller portions along SH 130
- Existing District entirely in extraterritorial jurisdiction
- Gilliland Creek Watershed
- District may annex land anywhere in Austin planning jurisdiction (and beyond)



Applicant's Proposal

- Consent sought for financing of general development activities, such as infrastructure
- No information available on specific development types or proposed land uses
- City provided no oversight over development in special legislation
- District may annex area that is not-contiguous (non-adjacent) to the District

Staff and Commission Recommendation

- Staff finalizing details of consent agreement
- Staff recommends that any consent agreement require that development in the District within the City's full purpose or extraterritorial jurisdictions will be governed by current City of Austin Land Development Code at the time of site development permit application
- **The Environmental Commission is asked to make a recommendation on a consent agreement that includes the provision above**