



**waterloo  
greenway**

**Waterloo Park  
Tunnel Inlet Facility  
Arturo Herrera Mural**

**Presentation to Waller Creek  
Local Government Corporation**

March 10, 2021

**waterloo  
greenway**

In  
Partnership  
With



Funded by

**Betty and Edward  
Marcus Foundation**

Requesting LGC approval





**The Tunnel Inlet Facility**





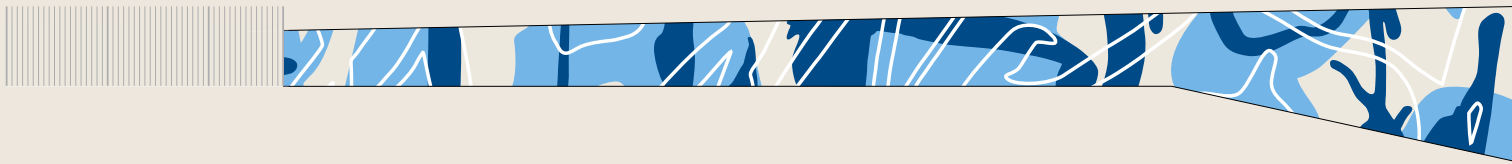
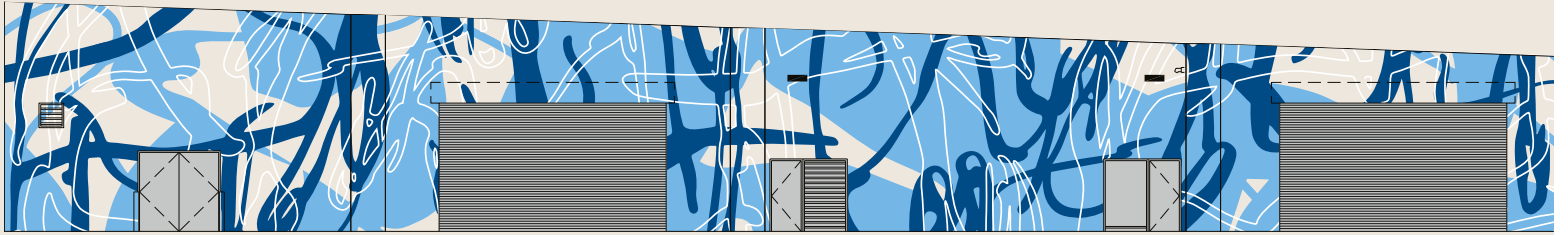
# The Mural





The Mural

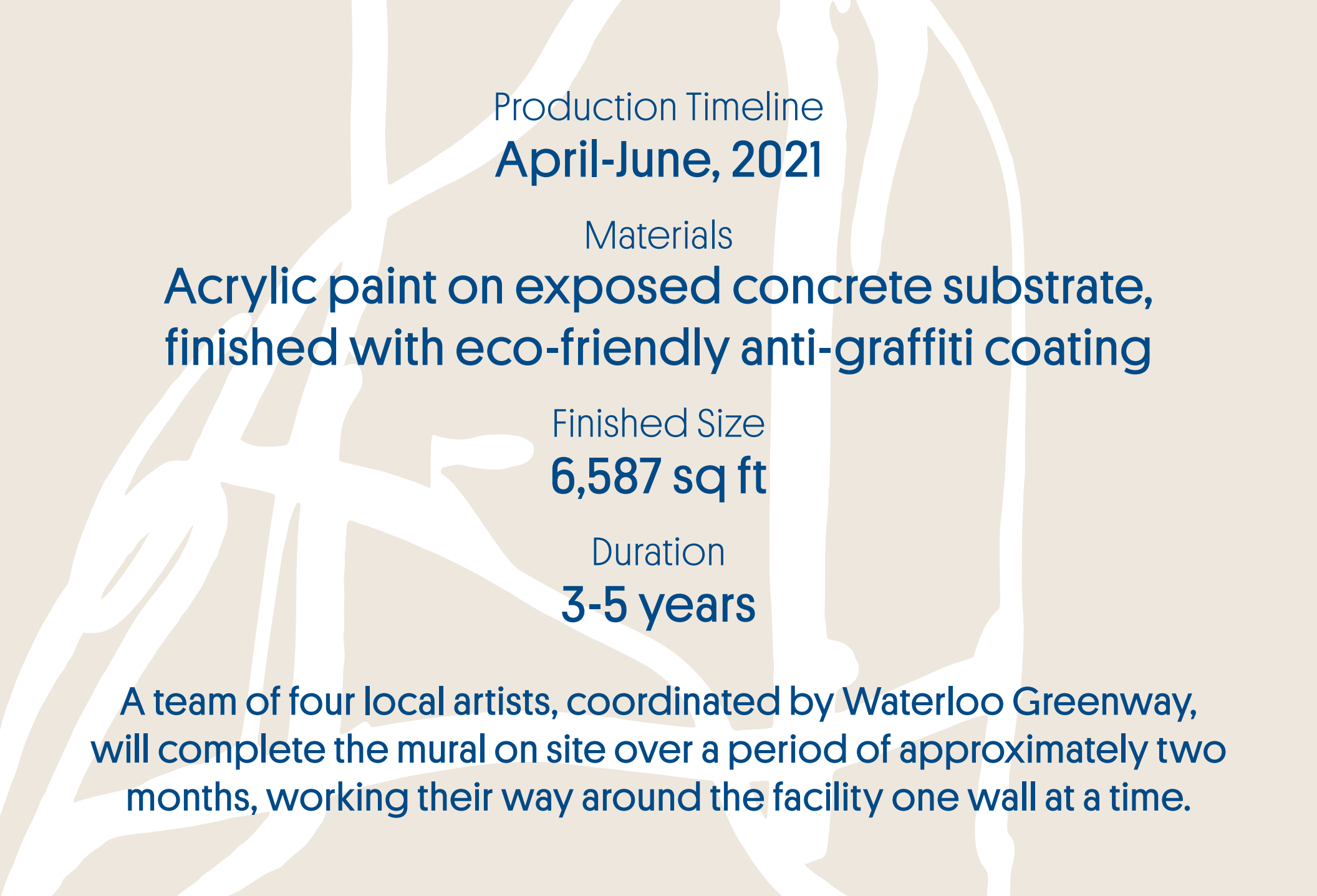




## ***Wall painting for Austin***

*Wall painting for Austin* was created specifically for Waterloo Greenway for long-term public viewing at Waterloo Park, upon its re-opening in 2021. Executed on three walls of the Waller Creek Tunnel inlet facility, the wall painting reflects the dynamism and constant activity of water management, oxygenation, and debris collection in downtown Austin. Using animated abstract bio-morphic shapes and lines within a blue and white color scheme, the wall painting echoes the vital flow systems inside the Tunnel as well as the vitality and energy of Waterloo Park in an urban environment. The three-part wall painting for Austin can be enjoyed from the gardens and rolling pathways in the park. The integration of architecture, environmental restoration, landscape design, and public art constitutes a complete ecosystem for the entire Austin community.

# **Artwork and Artist Statement**



Production Timeline  
**April-June, 2021**

Materials

**Acrylic paint on exposed concrete substrate,  
finished with eco-friendly anti-graffiti coating**

Finished Size  
**6,587 sq ft**

Duration  
**3-5 years**

A team of four local artists, coordinated by Waterloo Greenway, will complete the mural on site over a period of approximately two months, working their way around the facility one wall at a time.

**Installation**



Arturo Herrera was born in Caracas, Venezuela in 1959, he currently lives and works in Berlin. Over the last 20 years, Arturo Herrera has developed an internationally celebrated, multi-layered body of work—from collages, felt sculpture, public commissions, and wall paintings. His work often references the conflicted legacy of abstraction. Herrera employs shapes and imagery from popular culture, prompting a multiplicity of references and reading for the viewer.

**Arturo Herrera**





*Adam, Linda Pace Foundation, 2013, San Antonio, TX*



*Together, 2020, Bass Museum*



*Band, 2011, NSU Art Museum Fort Lauderdale*



*DB Kunststation Wolfsburg / Upper Area Windows, 2018*

**Arturo Herrera**





Local artists Jason Archer & Josh Row [Show Goat Mural Works], Jana Swec and Joe Swec will work closely with Waterloo Greenway and Arturo Herrera to execute the installation and painting of the mural.

## Installation Team





Thank you to PARD and WPD  
for collaborating in a  
variety of ways including:

**Providing plans and drawings of the site**  
**Coordination with Inlet Facility operations**  
**Preparation of the site for installation**  
**Permitting and other CoA processes**

**City of Austin Partners**



The logo for Waterloo Greenway, featuring the words "waterloo" and "greenway" in a lowercase, sans-serif font. "waterloo" is in orange and "greenway" is in a darker orange/brown color.

waterloo  
greenway

# Waterloo Park Opening Season

You're Invited!