

Proposed Emergency Temporary Occupancy Agreement for La Quinta South Austin 4200 South Interstate Highway 35

City of Austin
Real Estate Services



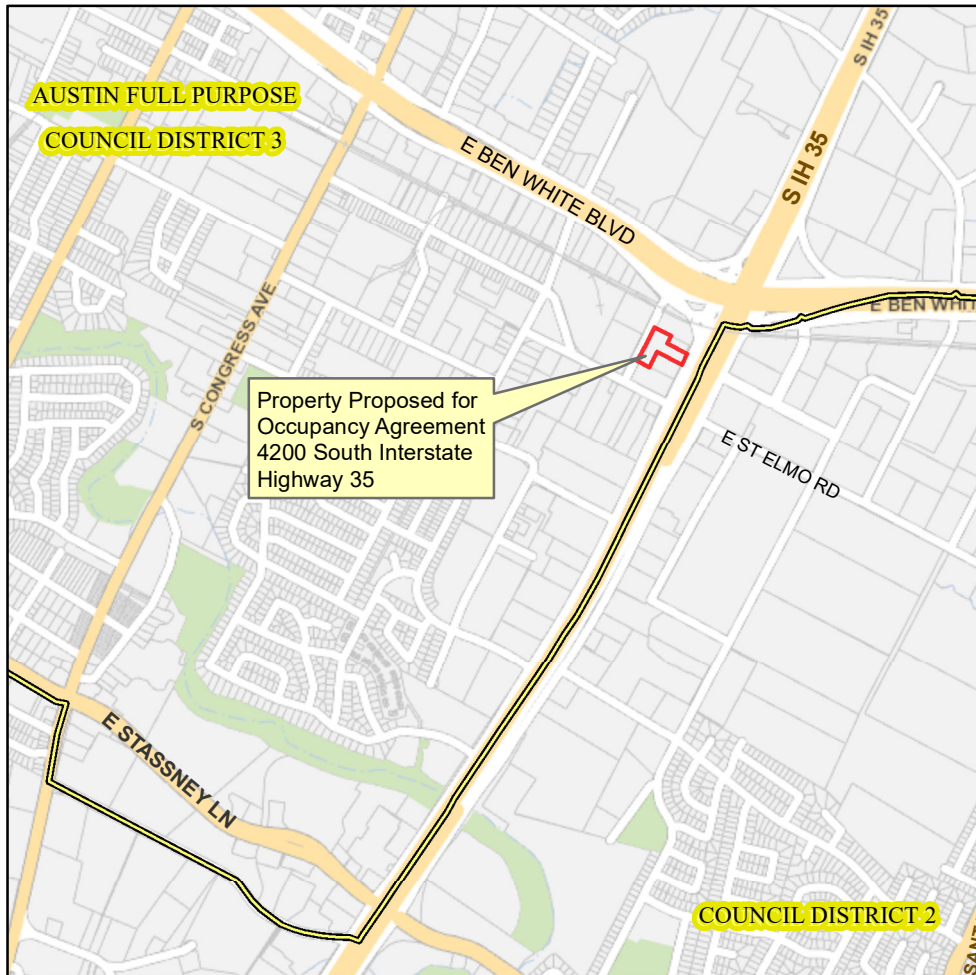
This product is for informational purposes and may not have been prepared for or be suitable for legal, engineering, or surveying purposes. It does not represent an on-the-ground survey and represents only the approximate relative location of property boundaries.

This product has been produced by the Office of Real Estate Services for the sole purpose of geographic reference. No warranty is made by the City of Austin regarding specific accuracy or completeness.

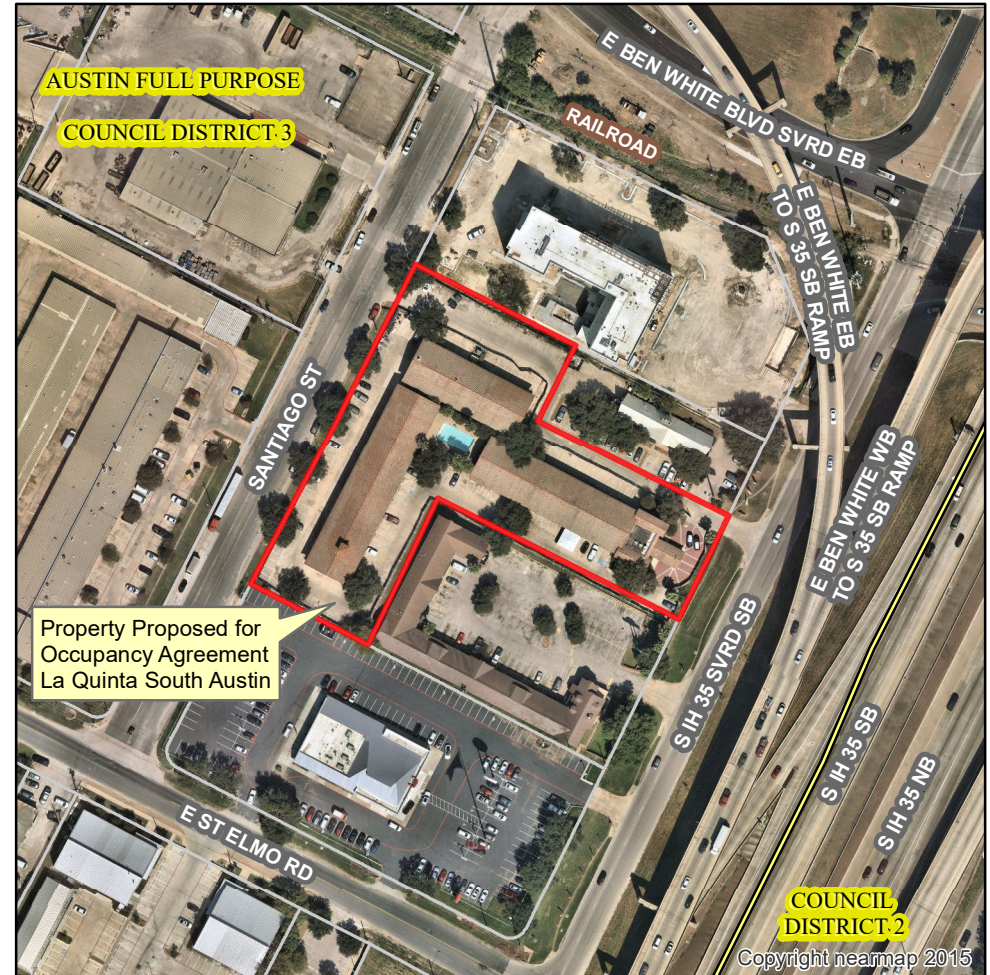
Produced by M McDonald, 3/30/2020
Revised 1.5.2021
File Number 07.0004

- Property Proposed for Occupancy Agreement
- City Council Districts
- TCAD Parcel

Nearmap US Vertical Imagery, ESRI



0 2,000 4,000 Feet



0 200 400 Feet

Copyright nearmap 2015