






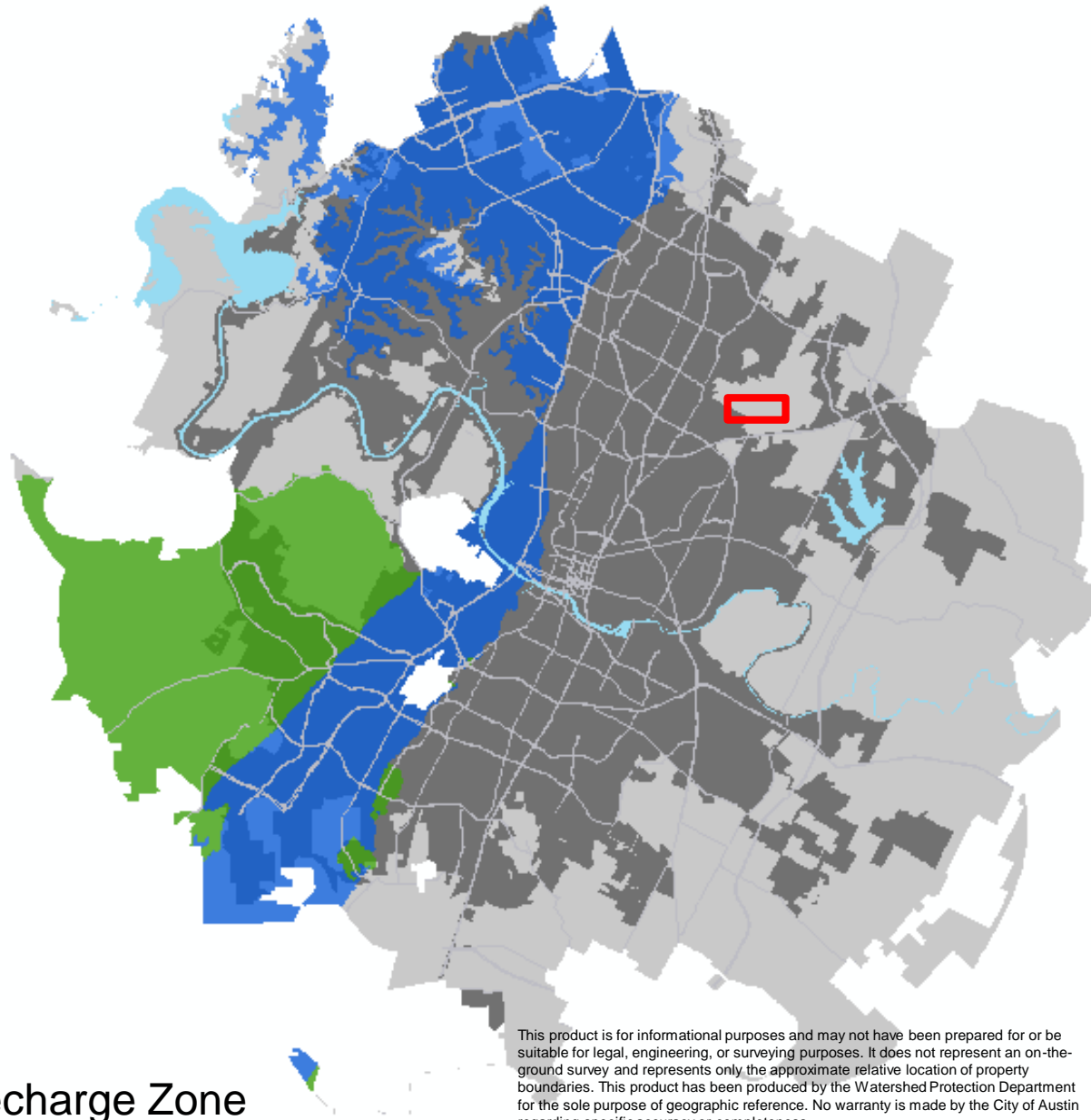
*Pamela Abee-Taulli  
Environmental Review  
Specialist Senior  
Development Services  
Department*

# **BRAKER VALLEY SUBDIVISION**

**4806 BLUE GOOSE RD.  
C8-2020-0112**

# PROJECT LOCATION

-  Site Location
-  Austin ETJ
-  Austin City Limits
-  Edwards Aquifer Recharge Zone
-  Edwards Aquifer Contributing Zone

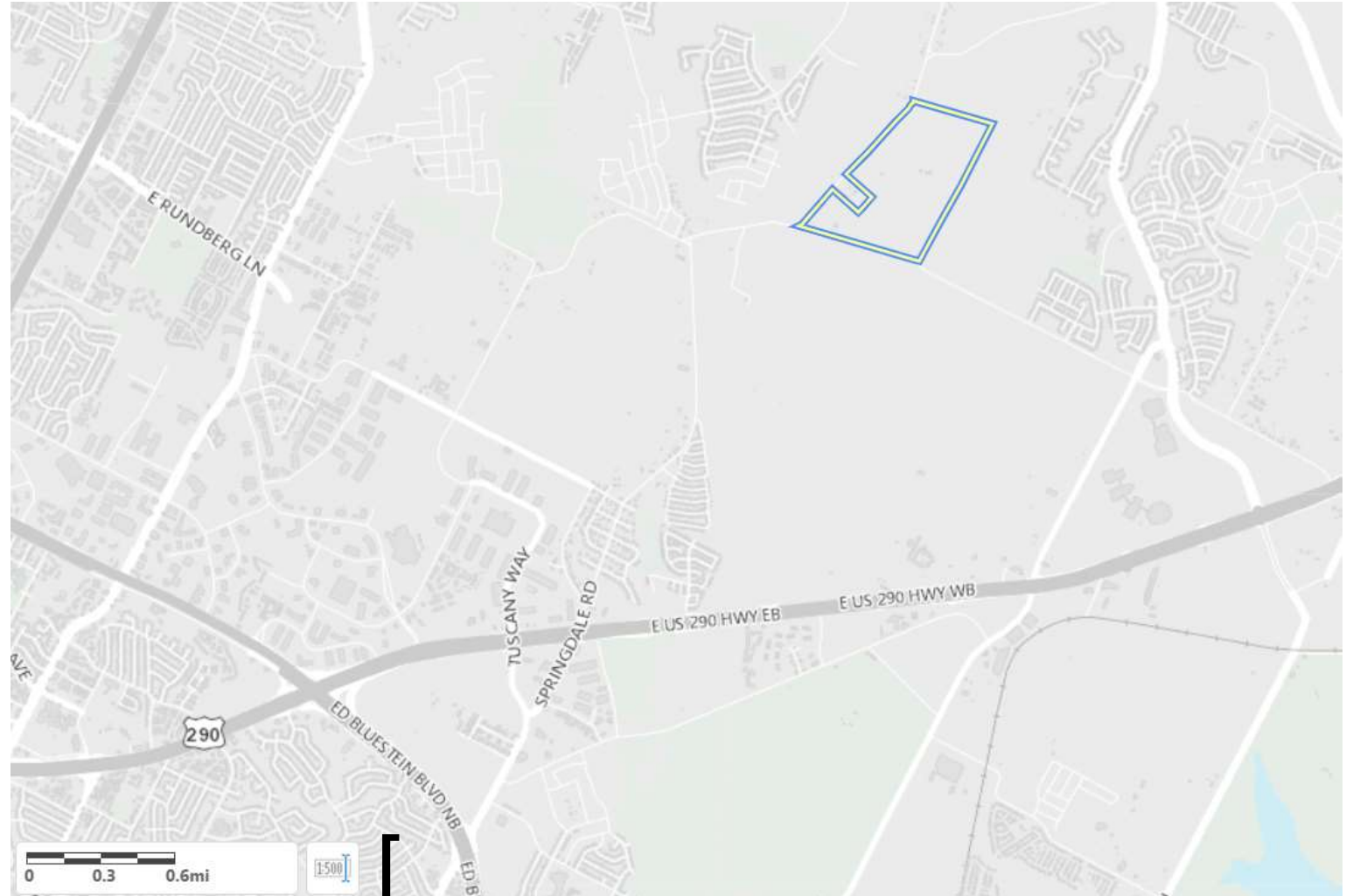


This product is for informational purposes and may not have been prepared for or be suitable for legal, engineering, or surveying purposes. It does not represent an on-the-ground survey and represents only the approximate relative location of property boundaries. This product has been produced by the Watershed Protection Department for the sole purpose of geographic reference. No warranty is made by the City of Austin regarding specific accuracy or completeness.

0 5 10  
Miles


# PROPERTY DATA

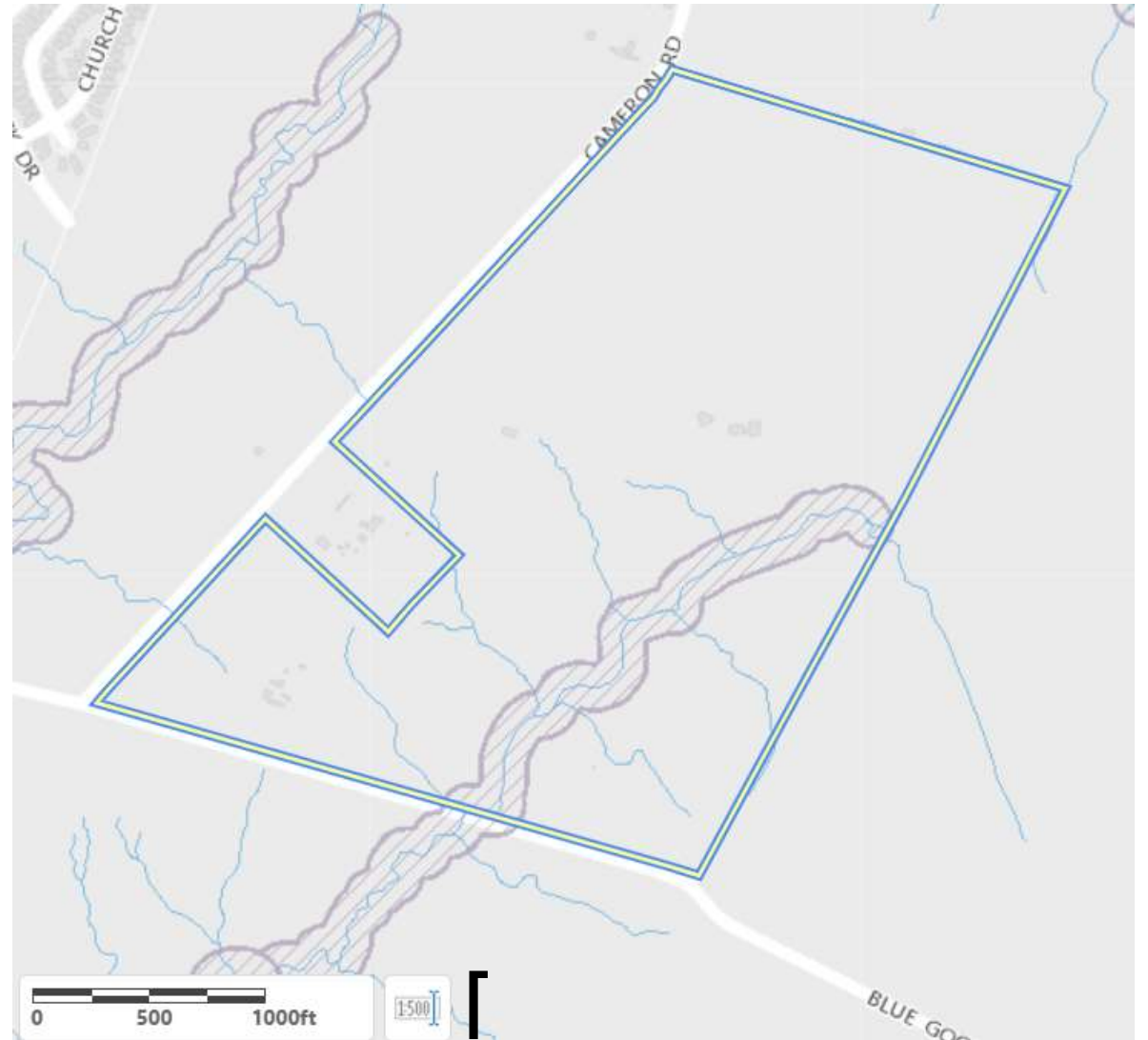
- Walnut Creek Watershed
- Suburban Classification
- Desired Development Zone
- Full Purpose Jurisdiction
- Critical Water Quality Zone
- Wetland Critical Environmental Feature
- Council District: 1



# DEVELOPMENT DATA


- Minor CWQZ buffer

 Critical Water Quality Zone




# DEVELOPMENT DATA

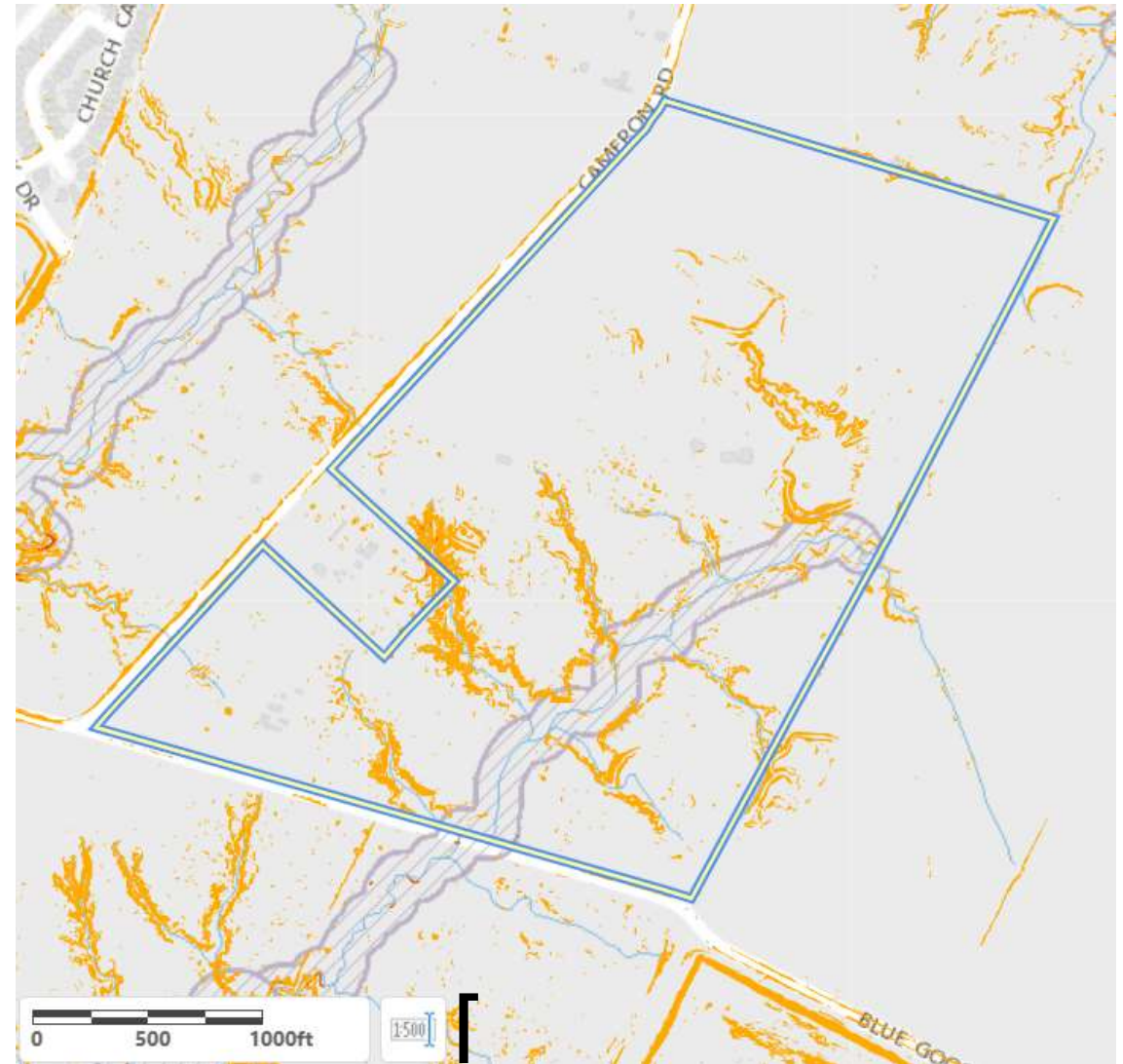
- Intermediate CWQZ buffer

 Critical Water Quality Zone

- Minimal slopes over 15%

 15 - 60% Slope


 60% Slope or Higher






# DEVELOPMENT DATA

- Intermediate CWQZ buffer

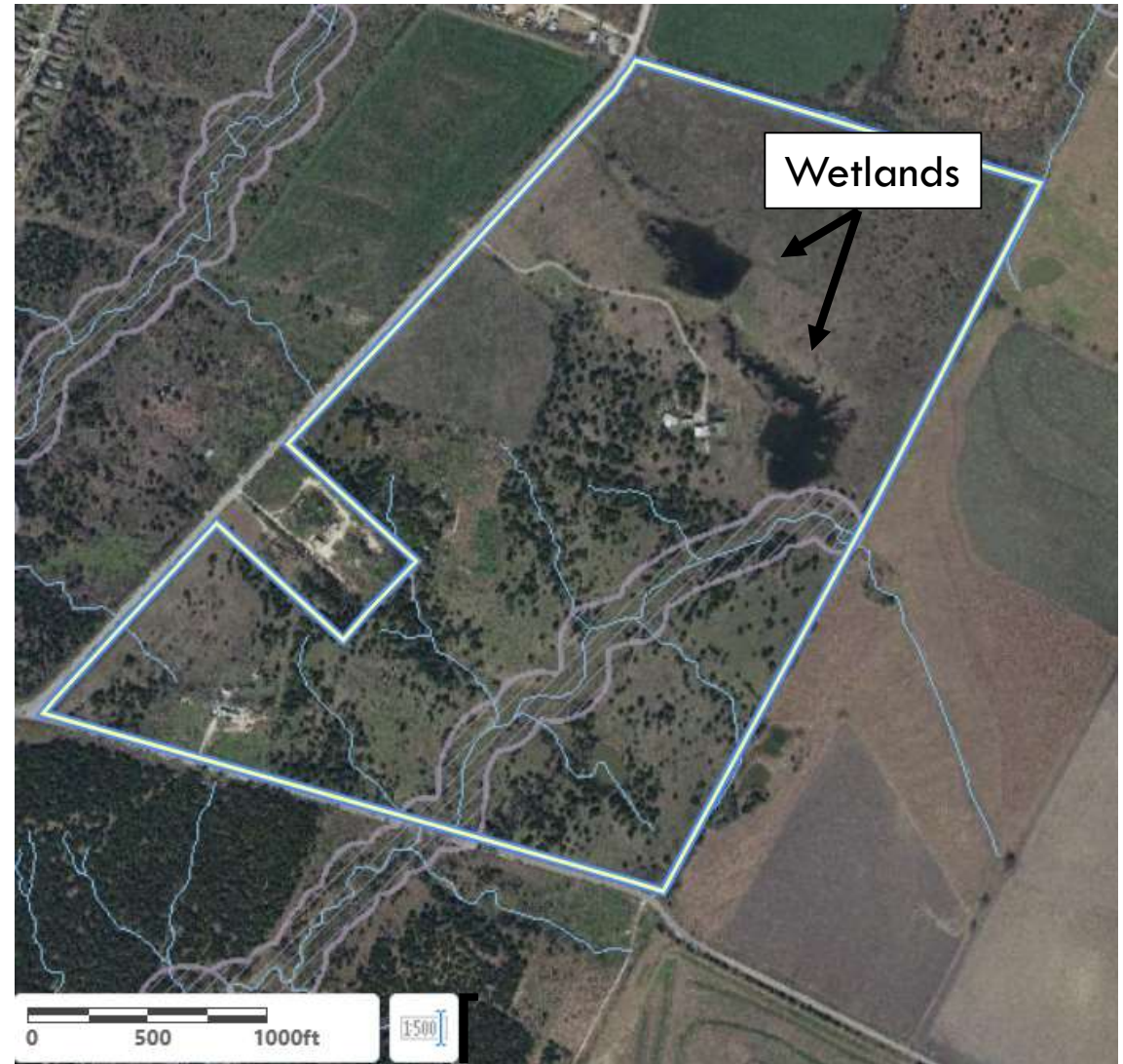
 Critical Water Quality Zone

- Minimal slopes over 15%

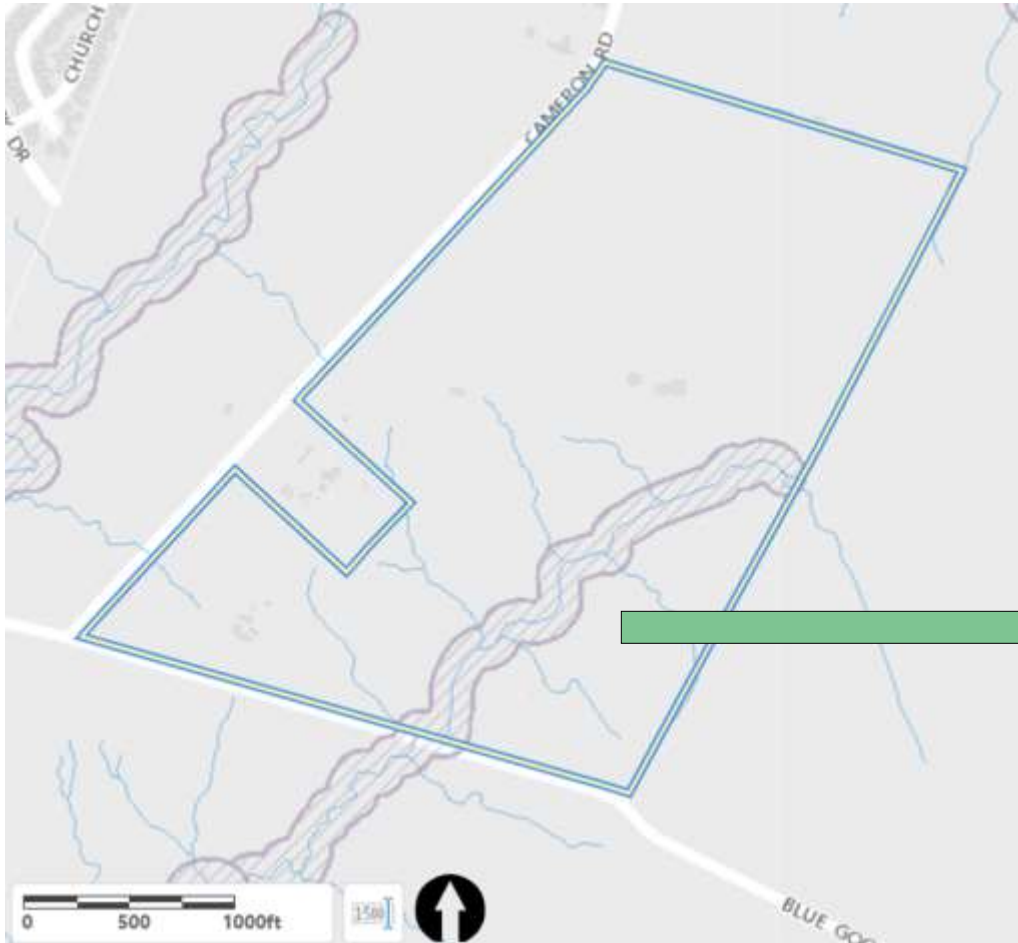
 15 - 60% Slope

 60% Slope or Higher

- Wetland CEF



# BUFFER AVERAGING

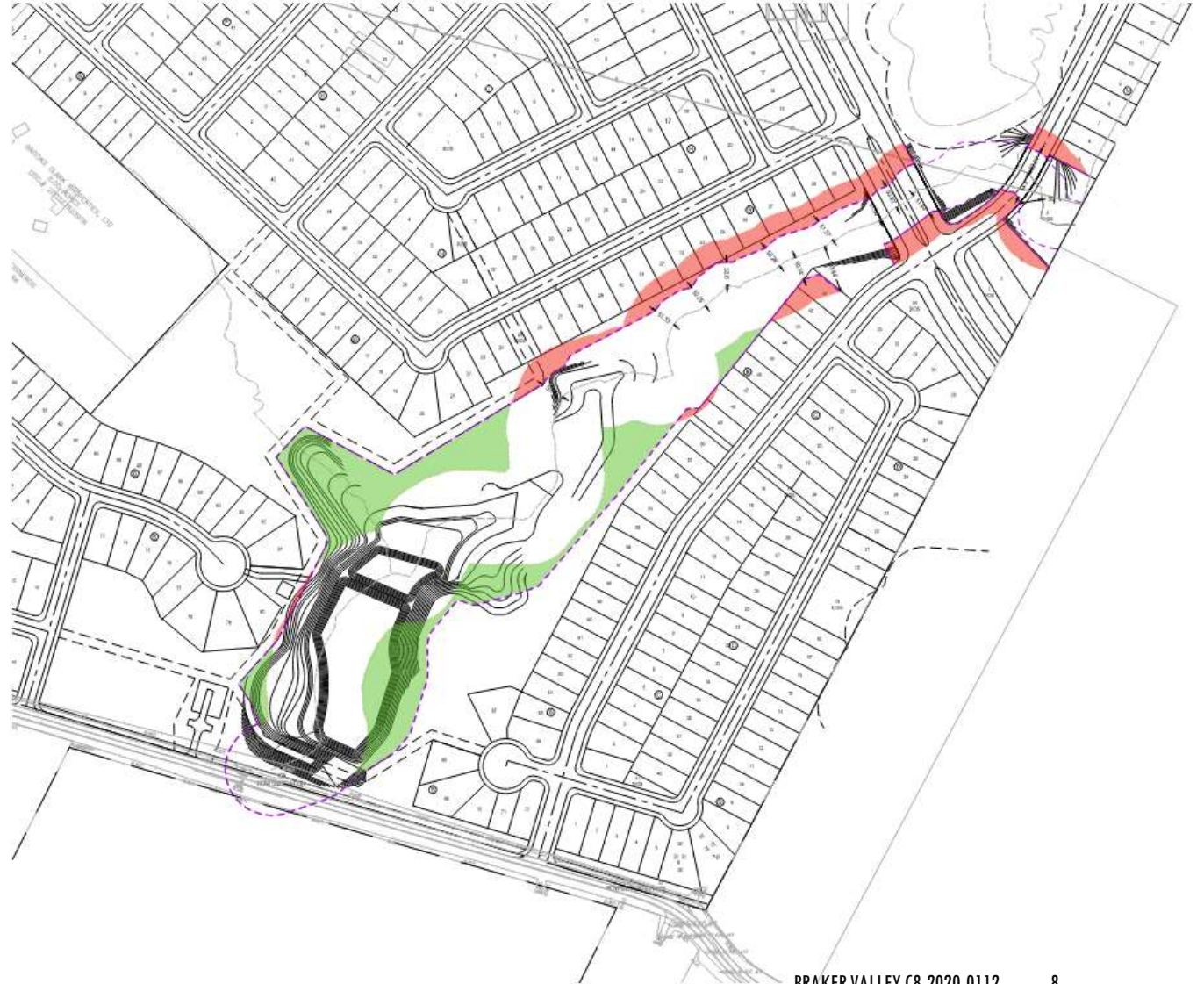




# BUFFER AVERAGING

## LEGEND

- ORIGINAL CRITICAL WATER QUALITY ZONE  
572,494 SF (13.14 AC)
- AVERAGED CRITICAL WATER QUALITY ZONE  
630,053 SF (14.46 AC)
- WATER QUALITY ZONE AREA REDUCTION  
74,127 SF (1.70 AC)
- WATER QUALITY ZONE AREA ADDITION  
131,686 SF (3.02 AC)





# SLOPES & GRADING

Slopes Table

Number	Minimum Slope	Maximum Slope	Area	Color
1	15.00%	25.00%	346164.87	Orange
2	25.00%	35.00%	88827.64	Purple
3	35.00%	50.00%	32084.69	Blue

Elevations Table

Number	Minimum Elevation	Maximum Elevation	Color
1	-11.261	-8.000	Brown
2	-8.000	-4.000	Pink
3	4.000	8.000	Green
4	8.000	16.733	Blue





# VARIANCE REQUEST 1

- Variance to 25-8-341 to cut over 4 feet to 11.26 feet.

Elevations Table			
Number	Minimum Elevation	Maximum Elevation	Color
1	-11.261	-8.000	
2	-8.000	-4.000	
3	4.000	8.000	
4	8.000	16.733	





$$\left. \begin{array}{l} \text{---} \\ \text{---} \end{array} \right\}$$
