
COVID-19 Update

April 20, 2021

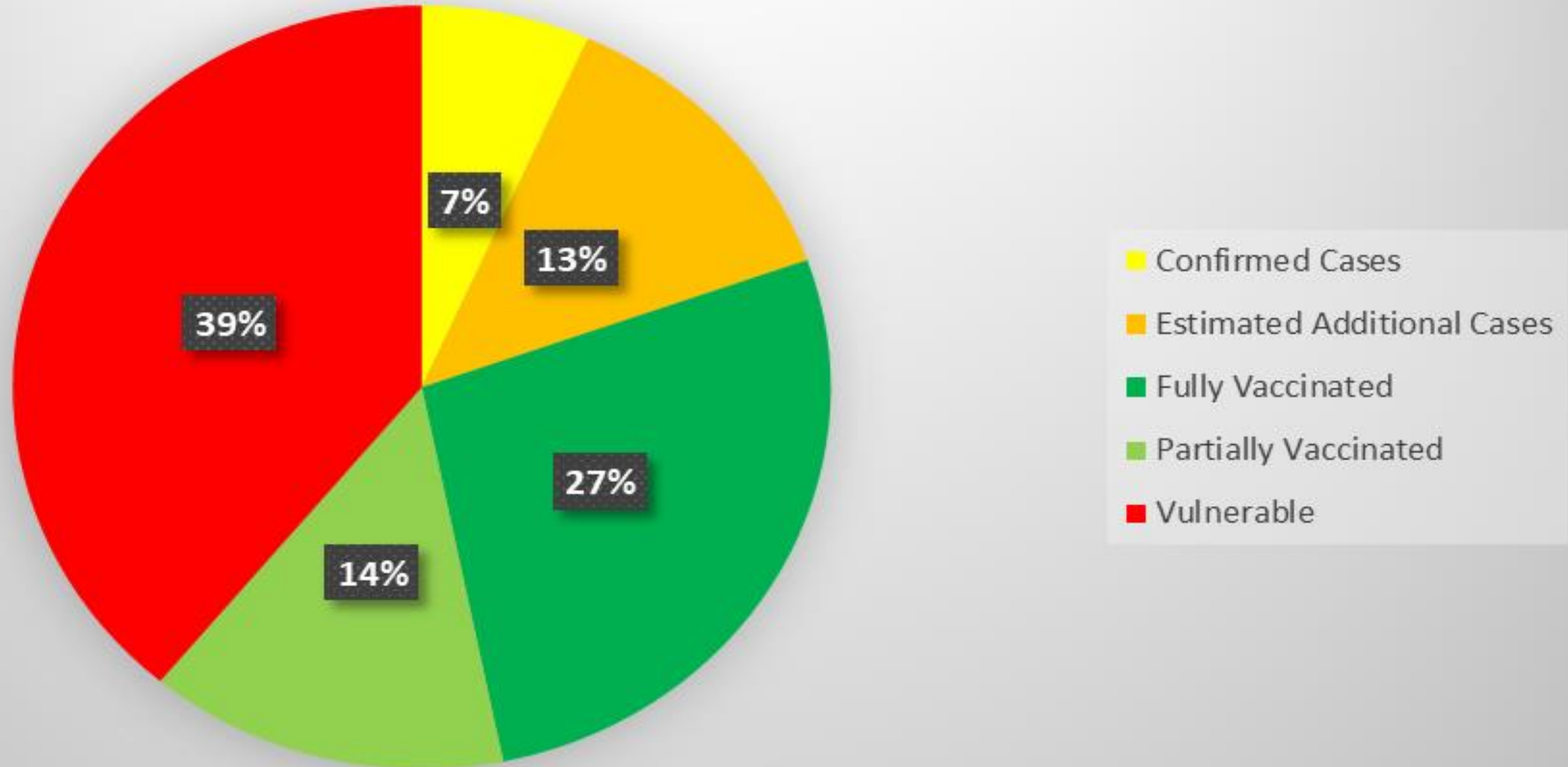
Austin Public Health

Mark Escott, MD, MPH, Interim Health Authority

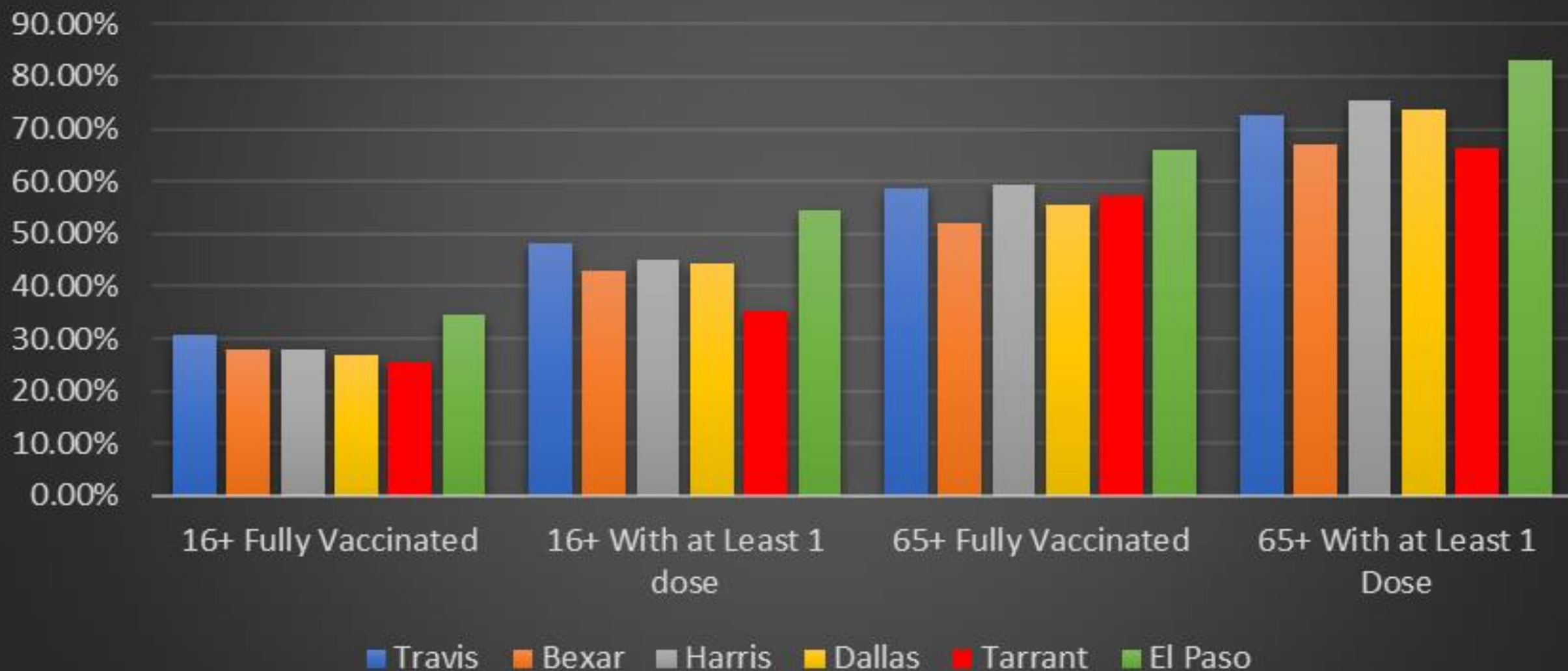
Chief Medical Officer

COVID-19 Progress Towards Herd Immunity

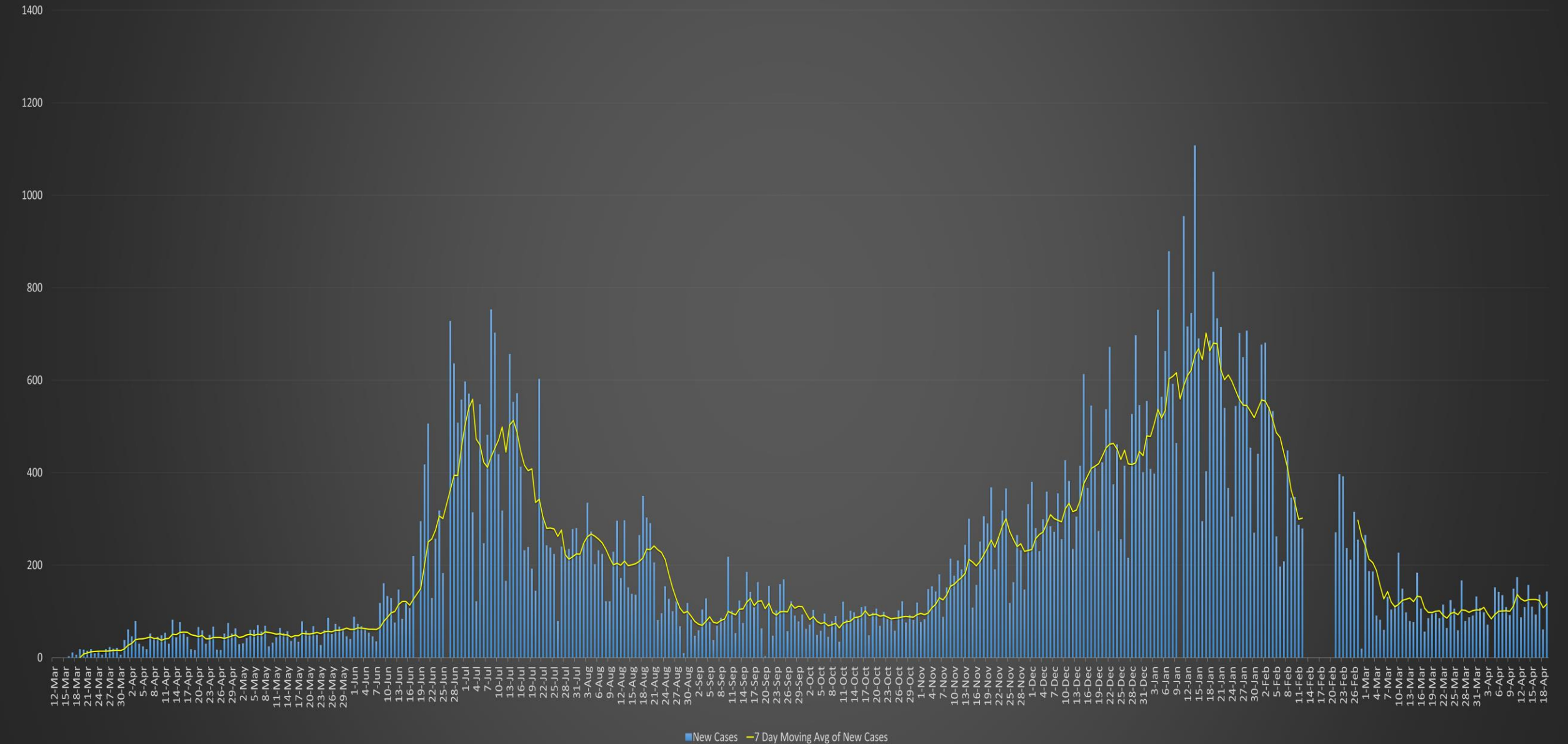
Austin - Travis County



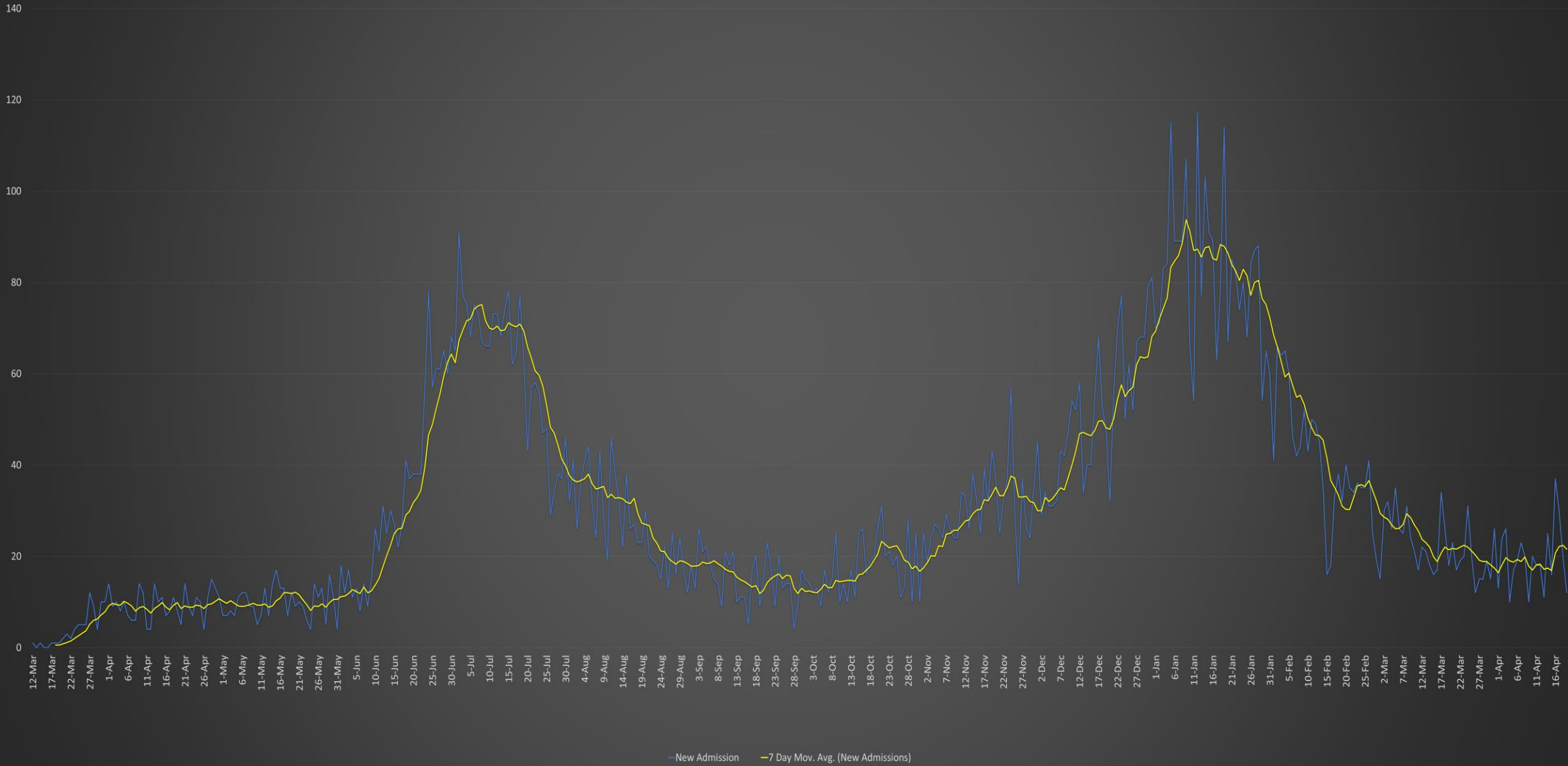
Texas Metropolitan Counties COVID-19 Vaccination Rate



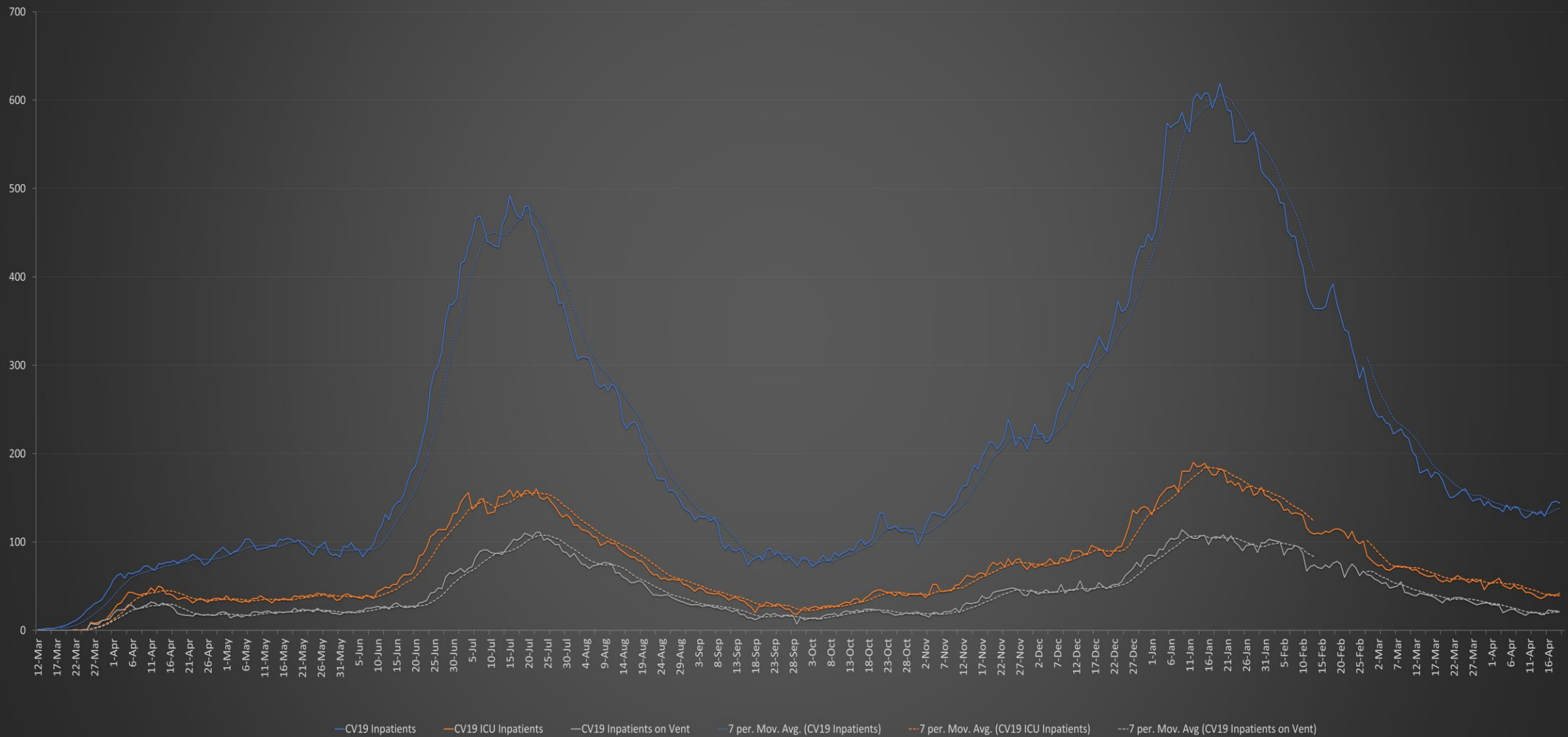
COVID-19 Travis County New Confirmed Cases



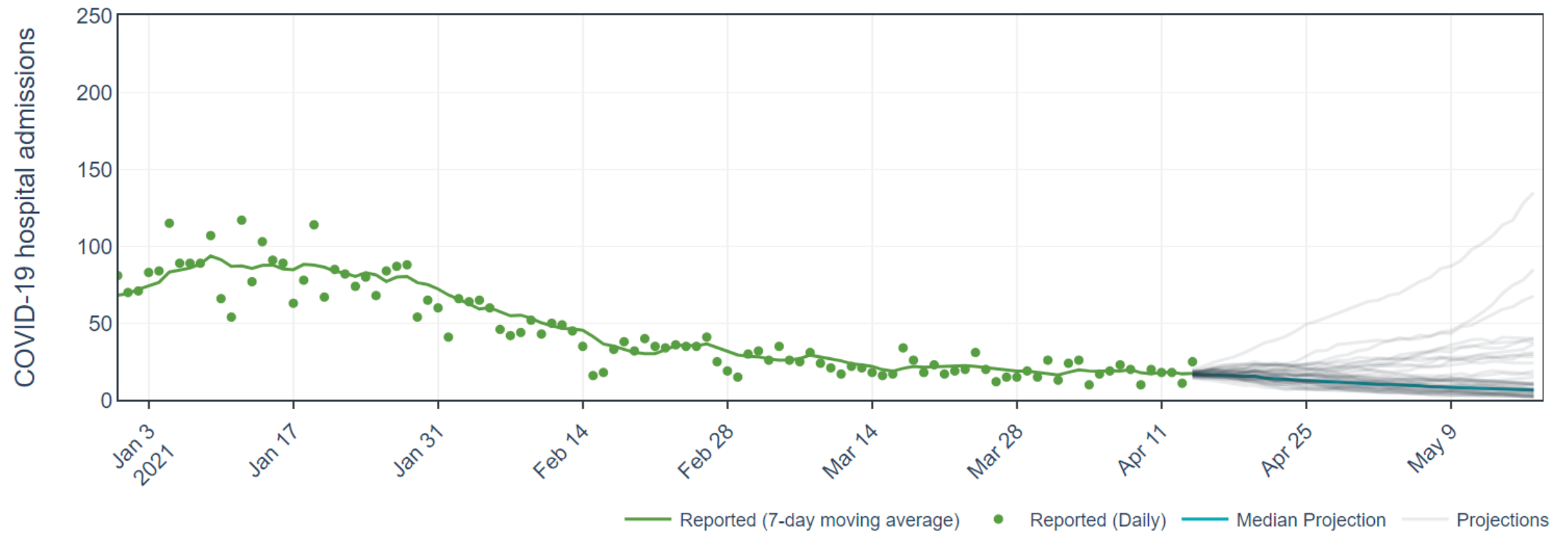
COVID-19 Austin MSA New Admissions



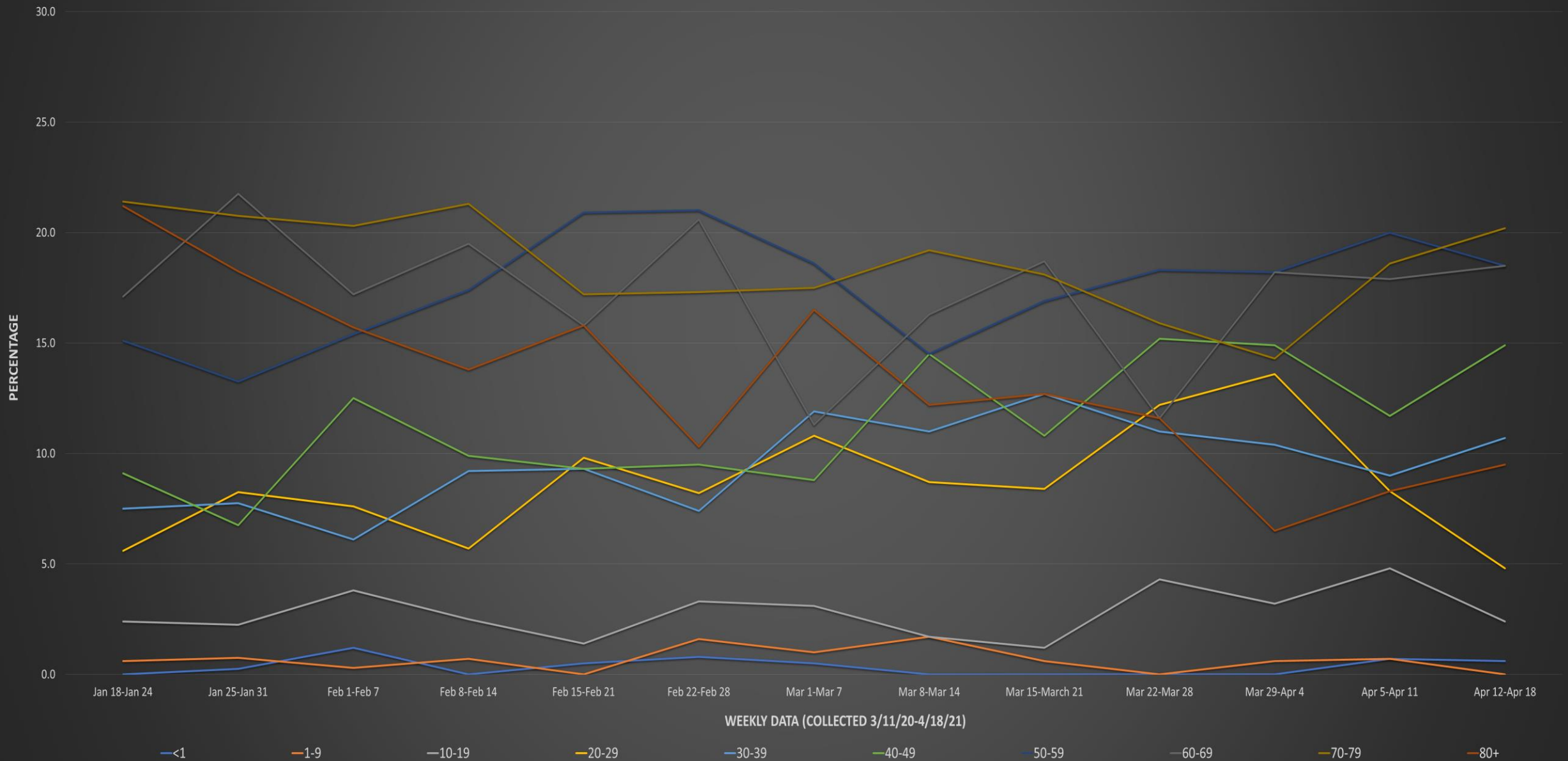
COVID-19 AUSTIN MSA CURRENT HOSPITALIZATIONS, ICU ADMISSIONS, AND VENTILATOR USE



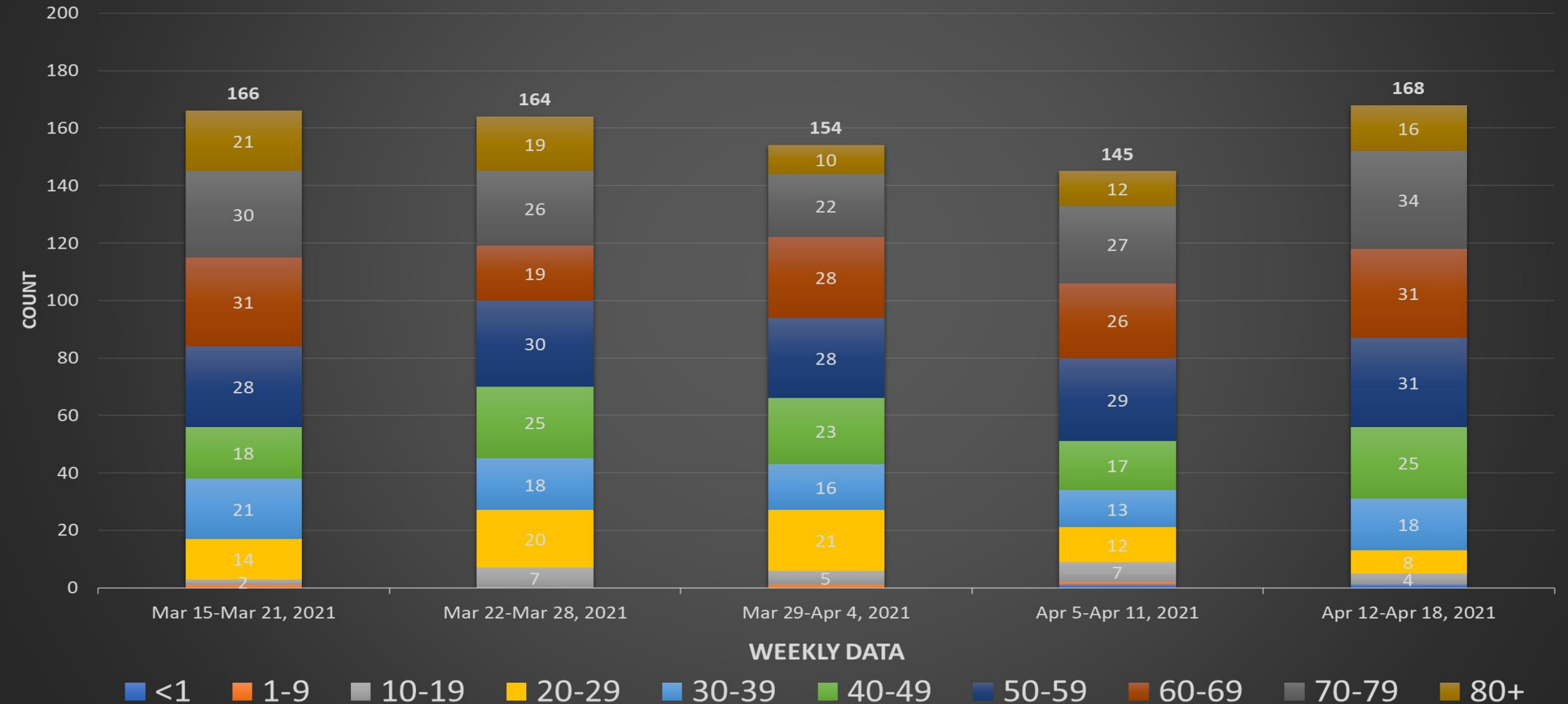
Daily COVID-19 Hospital Admissions in the Austin-Round Rock MSA (7 day moving average)



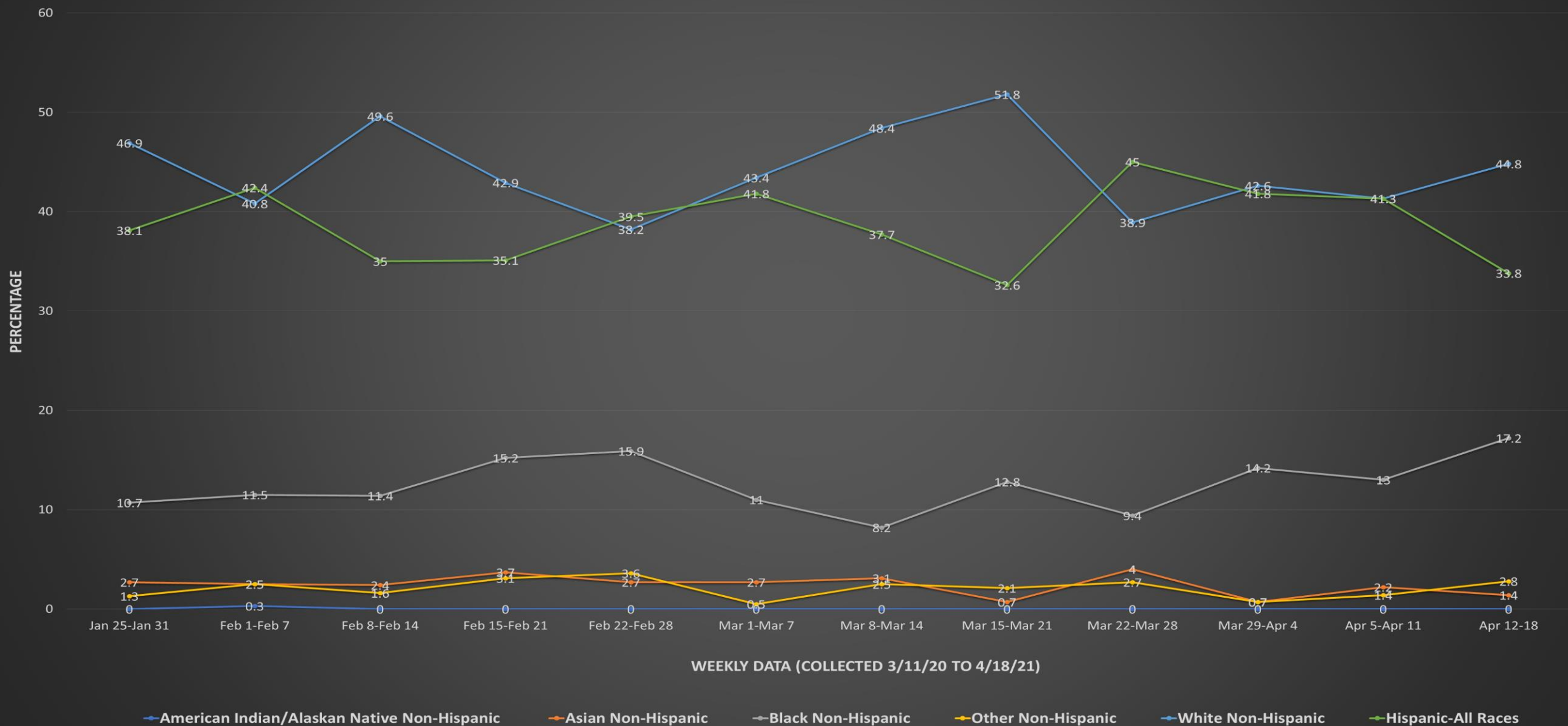
City of Austin - Travis County COVID-19 Hospitalization by Age Group (Austin MSA)



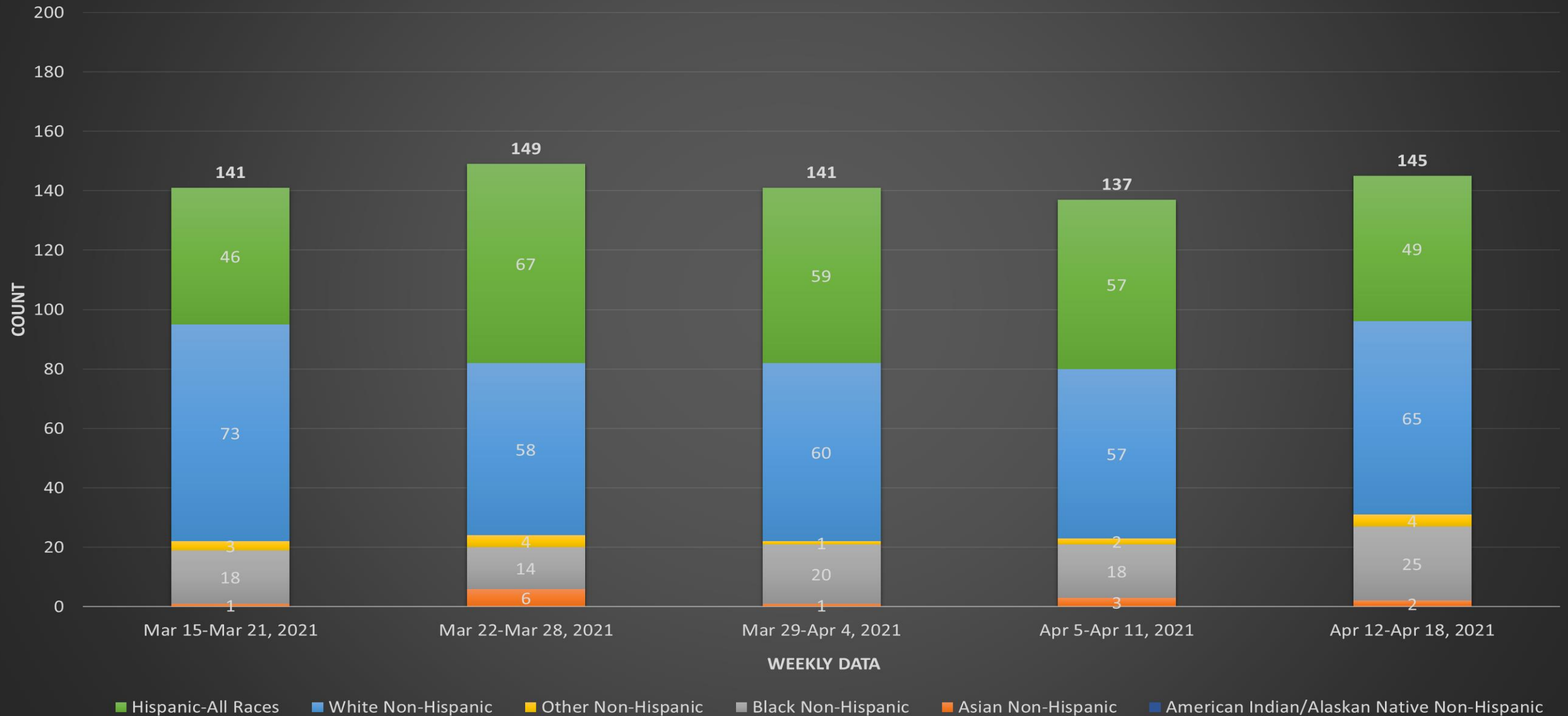
City of Austin - Travis County COVID-19 Count of Weekly Hospitalizations by Age Group (Austin MSA)



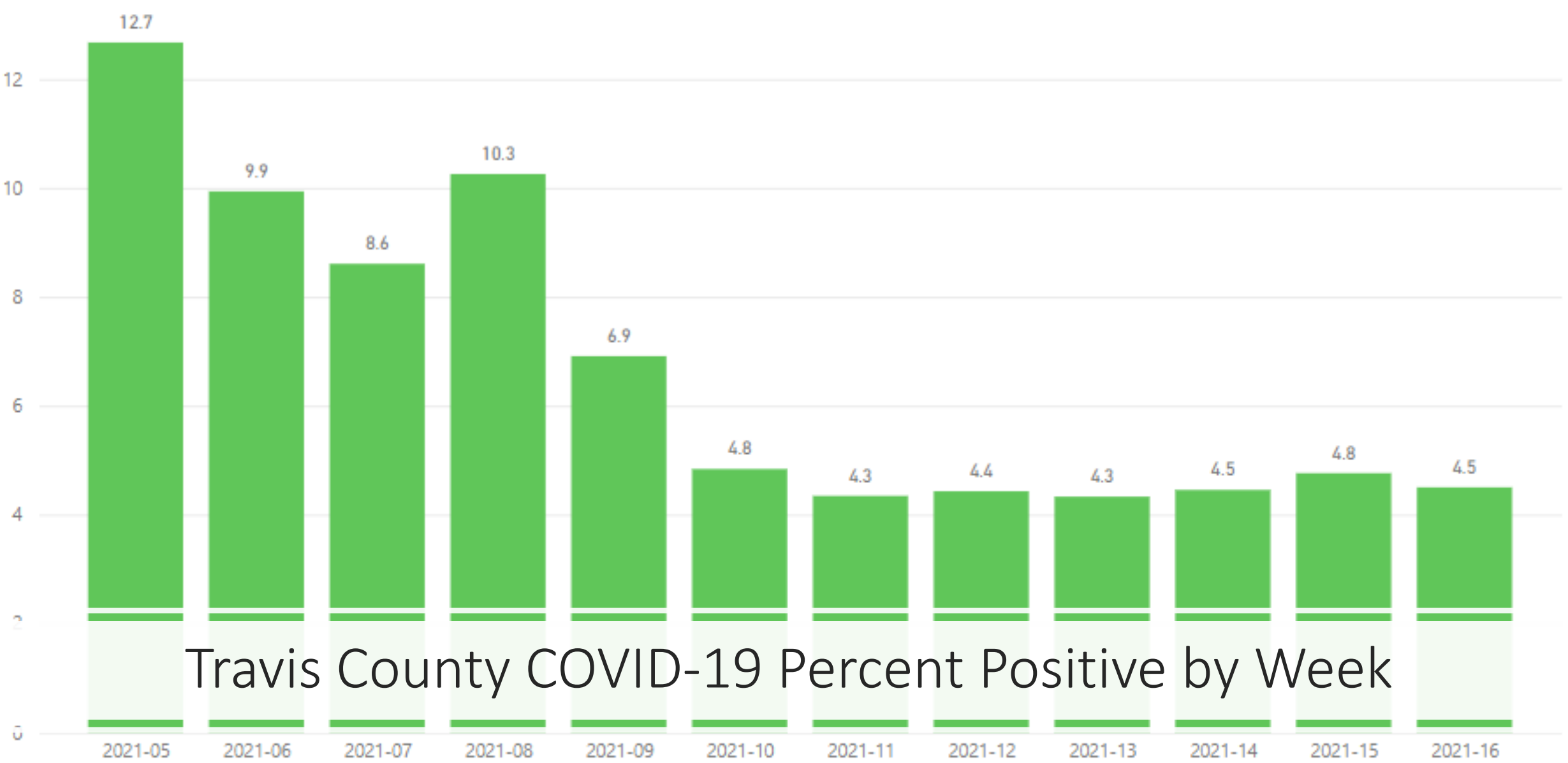
City of Austin - Travis County COVID-19 Hospitalization by Race & Ethnicity (Austin MSA)



City of Austin - Travis County COVID-19 Count of Weekly Hospitalizations by Race/Ethnicity (Austin MSA)

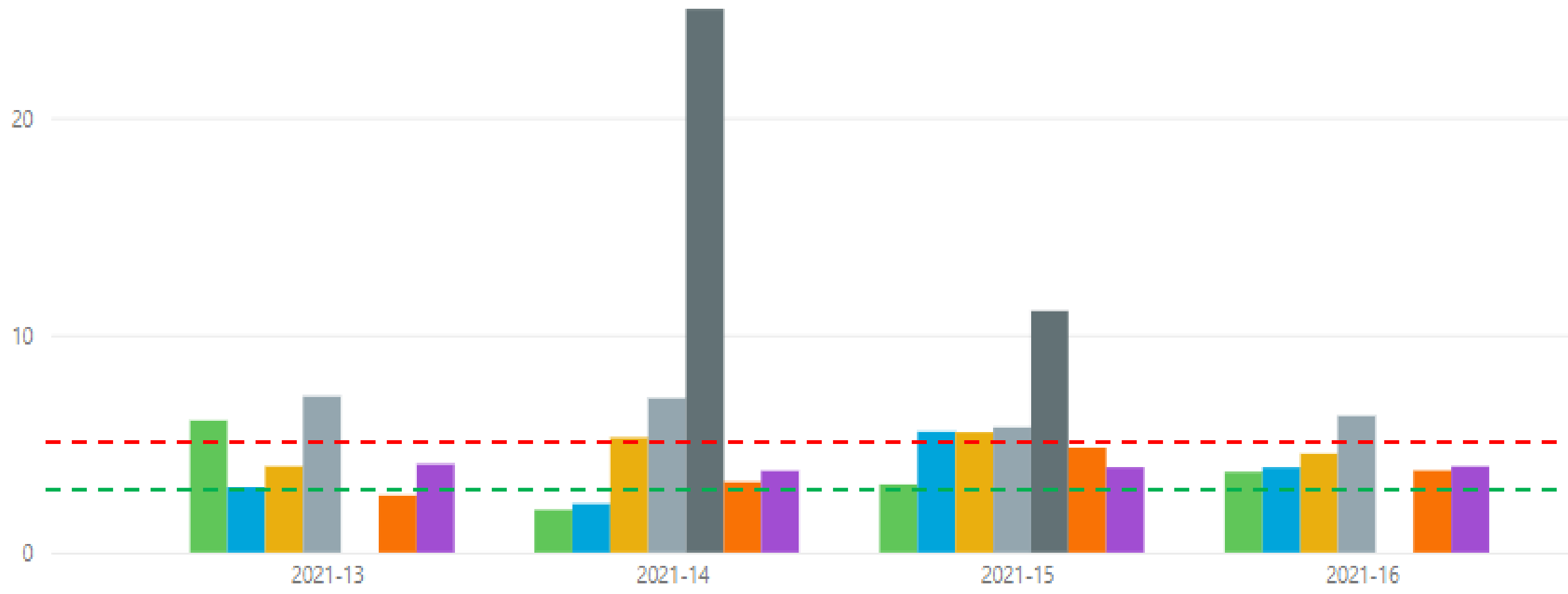


Percent Positive by Test Collection Week and Year - Last 12 Weeks

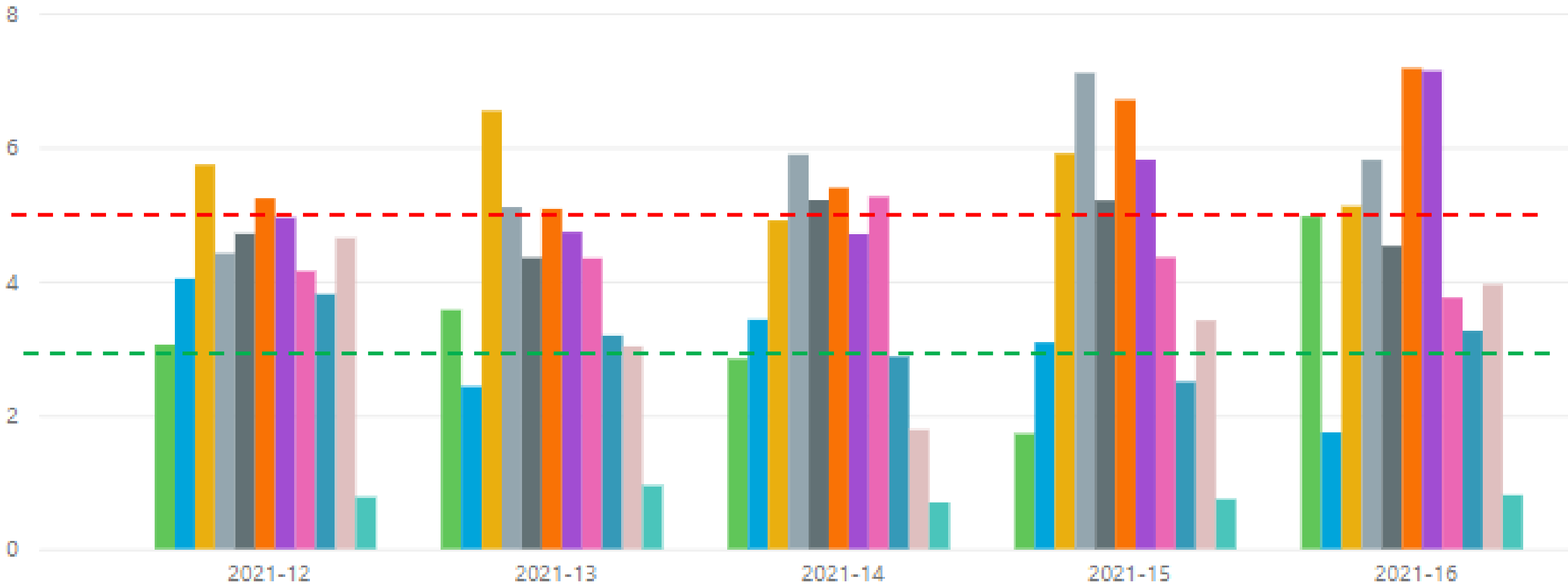


Travis County COVID-19 Percent Positive by Week

Race/Ethnicity ● American Indian or Alaska Native ● Asian ● Black or African American ● Hispanic or Latino ● Native Hawaiian or Other Pacific Islander ● Other ● White



Age Group at Collection <1 01-09 10-19 20-29 30-39 40-49 50-59 60-69 70-79 80+ Unknown



Positivity in School- aged Children 4/11-4/17

High School: 7.9%

Middle School: 5.1%

Elementary School: 1.7%

Preschool: 1.7%



Austin - Travis County COVID-19 Long Term Care Facility Weekly Dashboard

For more information on COVID-19 visit:
<http://austintexas.gov/covid19>

Reported by Austin Public Health: Data
Refreshed: 4/15/2021
All numbers are provisional and subject to



Accession Estates (AL)

Cases within last 14 days: 0
Cases within last 28 days: 0

Arbor Terrace Lakeway (AL)

Cases within last 14 days: 0
Cases within last 28 days: 0

Arden Courts (AL)

Cases within last 14 days: 0
Cases within last 28 days: 0

Auberge at Bee Caves (AL)

Cases within last 14 days: 0
Cases within last 28 days: 0

Auberge at Onion Creek (AL)

Cases within last 14 days: 0
Cases within last 28 days: 0

Cases

3,410

New Cases Within Last 14 Days

13

New Cases Within Last 28 Days

18

Deaths

303

Travis County Percent Positivity

4.2%

Data from March 24-April 6, 2021

Source: [Data.CMS.gov](https://data.cms.gov)

Resident Cases for All Travis County LTCFs



Staff Cases for All Travis County LTCFs



Resident/Staff Epi Curve

Cumulative Count & Resources

Hover over segment to see details

Resident Ethnicity



Resident Age Group



Staff Ethnicity



Staff Age Group



Resident Race



Resident Sex



Staff Race



Staff Sex



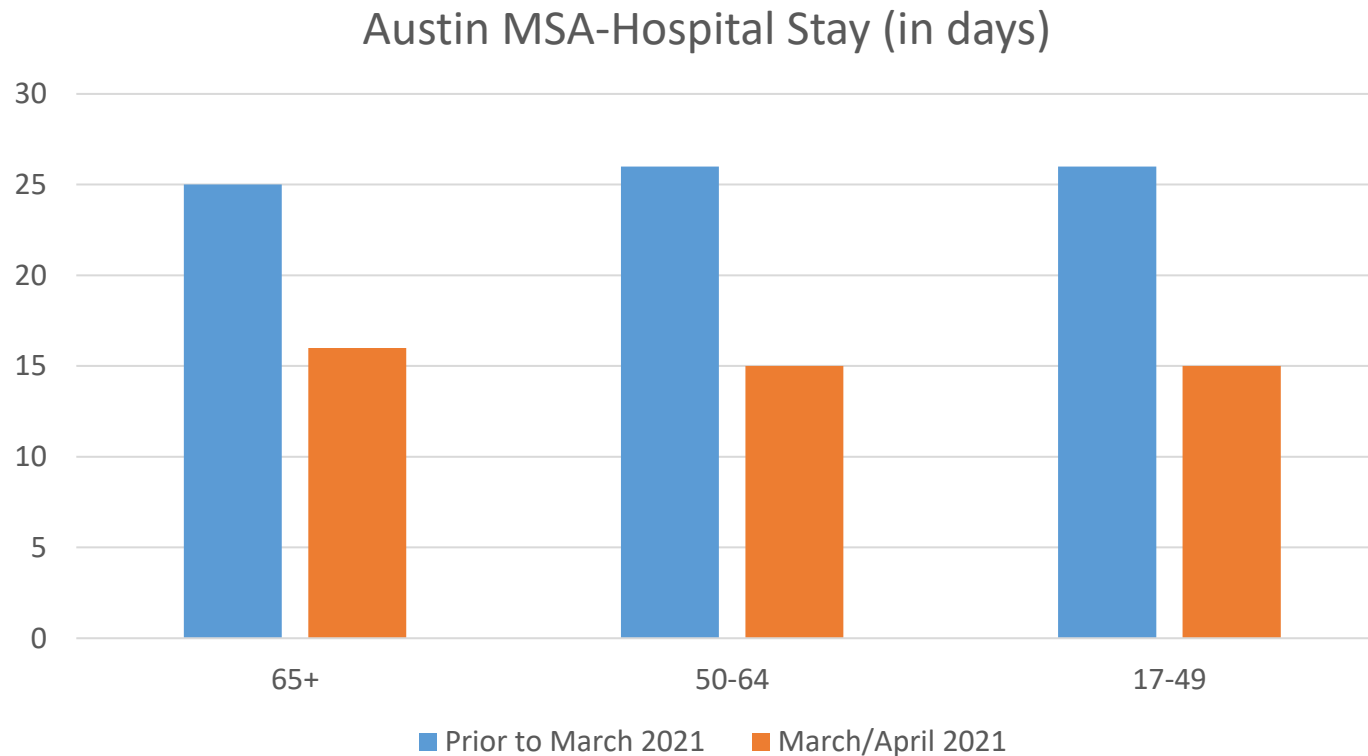


Regional Infusion Center

- TDEM opened on 1/6
- 1006 patients treated
- Current capacity exceeds demand
- Regional Call Center

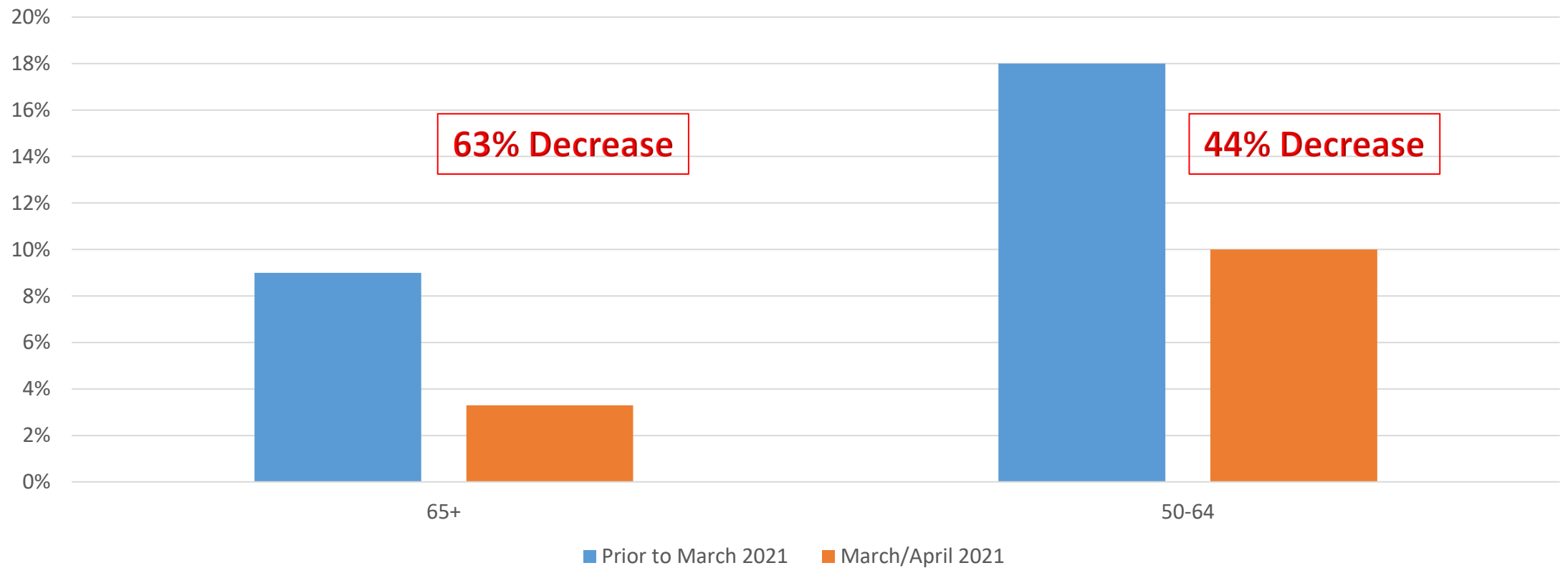
COVID-19 Hospital Length of Stay

95% of COVID-19 Patients Discharged from the Hospital

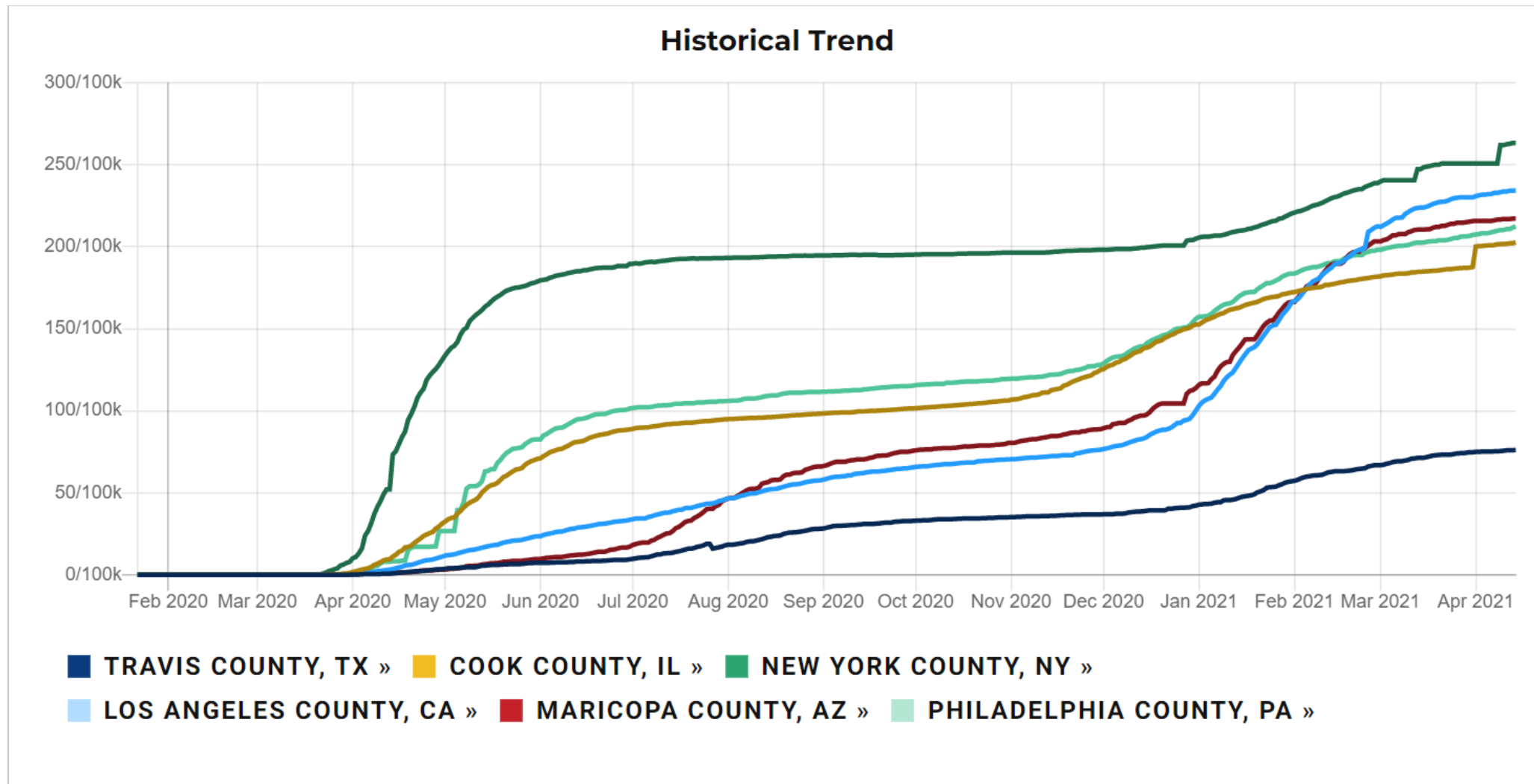


COVID-19 Mortality

Austin MSA COVID-19 In-Hospital Mortality



COVID-19 Deaths per 100k Population

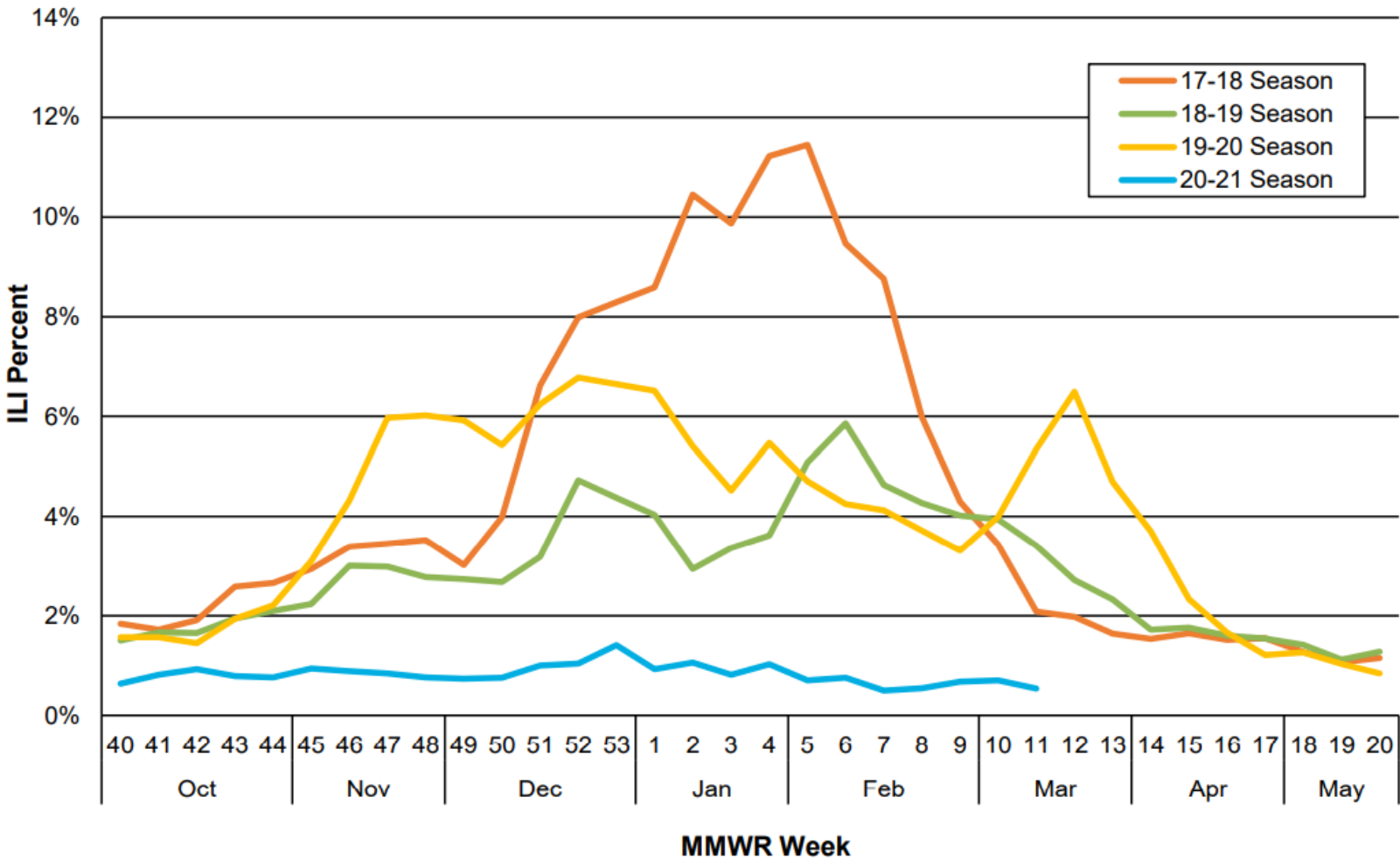


	MMWR Week 14	Season to Date
Influenza Tests Performed	127	8897
Total Positive Influenza Tests	4	107
% Positive Influenza Tests	3.15%	1.20%
Positive Rapid Influenza A	2	34
Positive PCR Influenza A	0	0
Positive Rapid Influenza B	1	67
Positive PCR Influenza B	0	0
Positive Rapid Influenza A and B	1	6
Non-Differentiated Influenza	0	0

Travis County Influenza Report

Travis
County
Influenza
Report

Figure 4. TxS2 ILI Percentage Syndromic Surveillance Data,
Travis County: 2017-2021



COVID-19: Risk-Based Guidelines

Recommended thresholds 7-day average hospital admits		Practice Good Hygiene	Maintain Social Distancing	Wear Facial Coverings	Higher Risk Individuals Aged 65+, diabetes, high blood pressure, heart, lung and kidney disease, immunocompromised, obesity			Avoid Gatherings	Avoid Non-Essential Travel	Avoid Dining/ Shopping	Recommended Business Capacity
		Stay Home If Sick			Avoid Gatherings	Avoid Non-Essential Travel	Avoid Dining/ Shopping				
		Avoid Sick People									
0	Stage 1	•			Greater than 25		Except with precautions	Gathering size TBD			100%
< 10	Stage 2	•	•	•	Greater than 10		Except as essential	Greater than 25			75%
10 - 29	Stage 3	•	•	•	Social and greater than 10	•	Except as essential	Social and greater than 10			50% - 75%
30 - (50 - 90)*	Stage 4	•	•	•	Social and greater than 2	•	Except as essential	Social and Greater than 10	•		25% - 50%
> 50 - 90 *	Stage 5	•	•	•	Outside of household	•	Except as essential	Outside of household	•	Except as essential	Contactless options only (i.e. curbside, delivery)

Stage 3 Recommendations

- **Wear a mask, social distance, and practice good hygiene**

- **Avoid gatherings with social groups greater than 10 people**

- **Avoid non-essential dining, shopping, and travel if you are high-risk**

- **Businesses voluntarily operate at a reduced capacity of 50-75%**



COVID-19 UPDATE

April 20, 2021

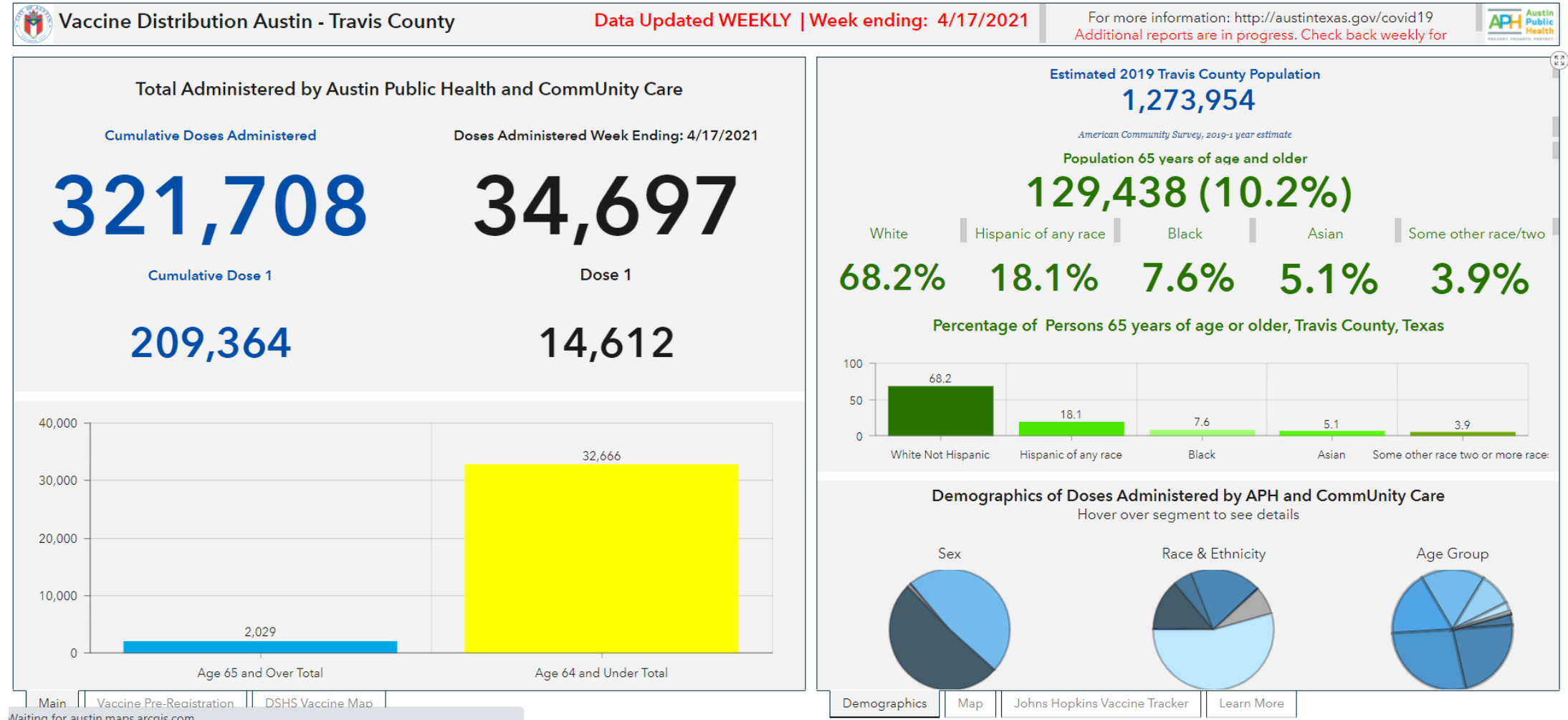
STEPHANIE HAYDEN-HOWARD

AUSTIN PUBLIC HEALTH DIRECTOR



APH Vaccine Dashboard Update

COTA & APH data merged:



Addressing the Barriers to Vaccine



Transportation Divide

Visit: <https://www.capmetro.org/vaccine-access>

- Call 512-369-6050 Monday-Sunday between 6 a.m. and 9 p.m. to request your FREE trip
- Same-day reservations are available, time permitting



Language Divide

- Online: 6 languages to register (English, Spanish, Korean, Burmese, Vietnamese, and Chinese)
- Residents can also call 3-1-1 or 512-974-2000 to get help registering for the vaccine in their preferred language
311's language translation vendor supports **over 240 languages**
- Text messaging to residents in the Eastern Crescent resulted in a boost in call volume (1,072 calls) to 311 for language access last month



Digital Divide

- Call 3-1-1 or 512-974-2000 to get help registering for an account.
- Health Equity and Travis County Call centers call back to schedule an appointment
- Partnered with faith-based organizations in the Eastern Crescent & UT School of Nursing to support pop-up vaccination clinics
- Mobile Vaccine Program with Meals-on-Wheels, City of Austin Housing Authority, and Foundation Communities

Vaccine for Childcare, Education, and Senior Population Update

Childcare/School Staff

- ~12,866 school and child-care staff have been vaccinated with at least one dose

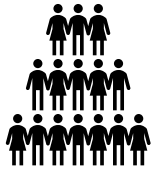
Senior Population

- Doses through APH (60 years and older as of 4/19):
 - First dose ~58,000
 - Second dose: ~40,000

DSHS total

- 101,597 Travis County residents 65 years or older have been vaccinated with at least one dose

APH Vaccine Update



- Total of **251,244** first/second doses administered through APH (4/19)
- DSHS data: **48.25%** of Travis County vaccinated with at least first dose (16+)



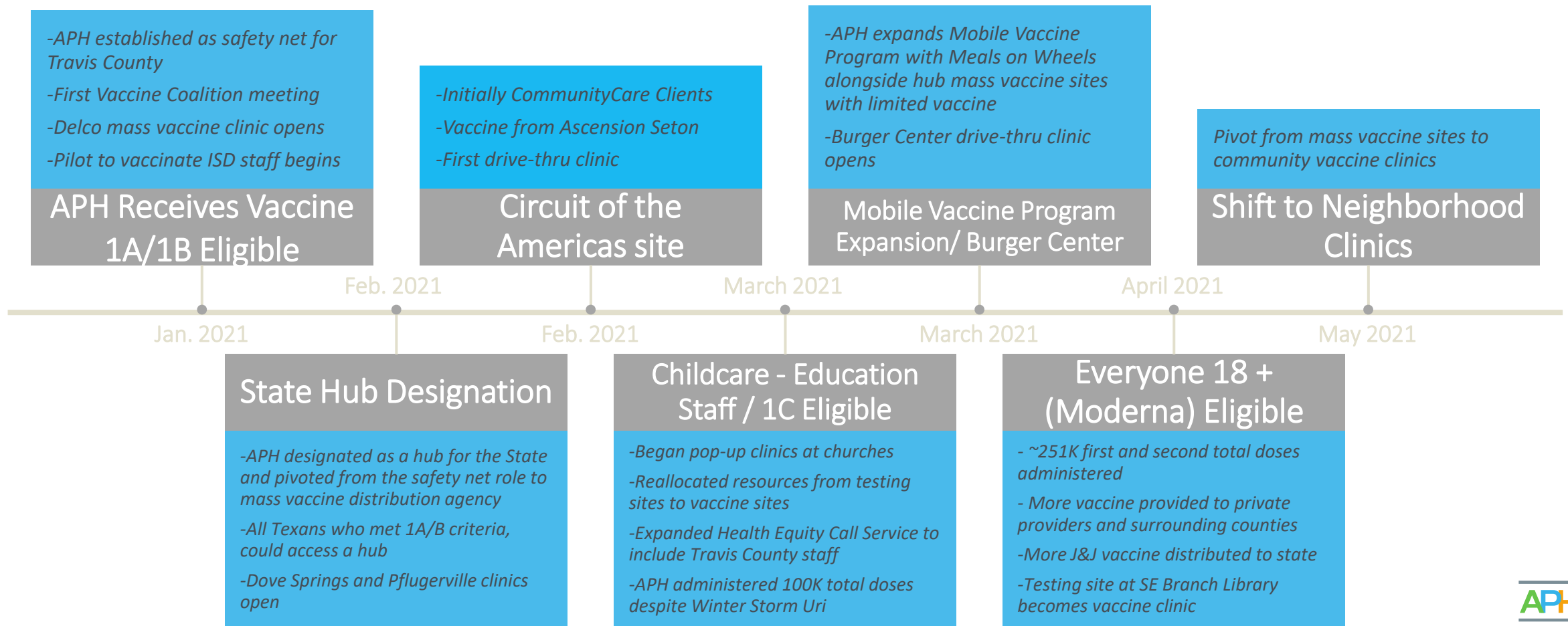
- Appointment release extended (Saturday 4/17 through Tuesday 4/20)
- Next couple of weeks: Walk-ins (no appointments) welcome, more details to come.



Health Equity Line working with 311 to call back those who are requesting an appointment.

Timeline of APH Vaccine Distribution

Eligibility and Distribution





Thank you
