



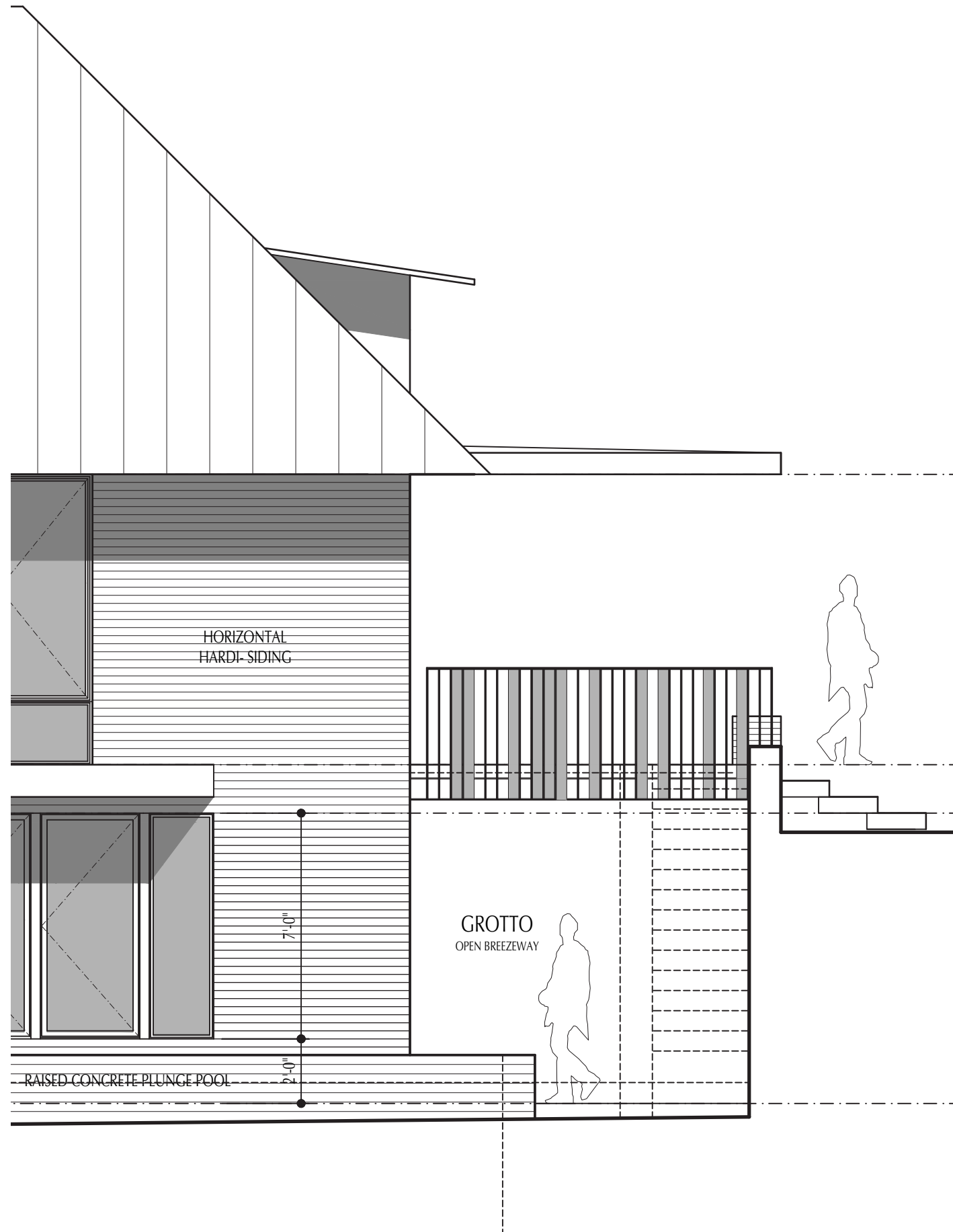
Changes based on ARC Comments 03/08/21

- PORCH AND LANDSCAPE WALL-
SEPARATED BRICK LANDSCAPING WALL BY 8" IN RESPONSE TO ARC COMMENTS

Changes based on Staff and HLC Comments 04/26/21

- CHANGED EXTERIOR STUCCO CLADDING ON WALLS TO HORIZONTAL SIDING
- CHANGED BRICK LANDSCAPE AND PORCH WALL TO STUCCO WITH A STONE CAP
- CHANGED METAL MESH PANEL PORCH END GUARDRAILS TO VERTICAL METAL RAILINGS INSPIRED BY CRAFTSMEN BUNGALOW RAILINGS

Interpreting Bungalow Railing as Art



Donald Judd - Objects 1962

Consists of one single structure or multiple units with a defined spatial relationship that as a whole comprises the work of art.





Italianate, Greek Revival

Notes: Elaborate handrails, Long solid retaining walls

1316 W 6th st.
Contributing - 1877 - 1925



Italianate, Queen Anne

Notes: Elaborate handrails, Long solid retaining walls

1412 6 1/2 st.
Contributing -1877



Queen Anne

Notes: Elaborate handrails

1407 W 9th st.
Contributing - 1877



Craftsman Bungalow

Notes: Wood siding over stucco base

617 Highland Ave.
Contributing - 1920



Greek Revival

Notes: Hipped roof with front facing dormer

1508 W 9th st.
Contributing - 1920



Stick Style, Greek Revival

Notes: Elaborate handrails, wide porch

1500 W 9th st.
Contributing - 1882



Craftsman Bungalow

12:12 Roof pitch at main house and front dormer

609 Oakland Ave.
Contributing - 1915



Prairie

Flat roof with projected flat roof porch

1411 W 9th st.
Contributing - 1915



Craftsman Bungalow

Standout 'Japanese style' roof detailing

707 Highland Ave.
Contributing - 1915



Prairie

Flat roof with projected flat roof porch

701 Highland Ave.
Contributing - 1915



Craftsman Bungalow

Wood siding over brick base, wide porch, dramatic span

606 Highland Ave.
Contributing - 1915



Classical Revival

Classical Columns with flat roof porch

700 Highland Ave.
Contributing - 1915

Neighborhood Context - Varying Styles and Roof Pitches



6:12 Hipped Roof with front dormer

Classical Revival

611 Oakland Ave.
Contributing - 1915



12:12 Roof pitch with front dormer

Craftsman Bungalow

609 Oakland Ave.
Contributing - 1915