

ZILKER  
METROPOLITAN  
PARK  
VISION PLAN



# URBAN TRANSPORTATION COMMISSION MEETING MAY 12, 2021

NELSON \ NYGAARD



DESIGNWORKSHOP



# AGENDA

1. Introduction
2. Site Analysis and Needs Assessment Report Overview
3. Discussion
4. Goals and Guiding Principals



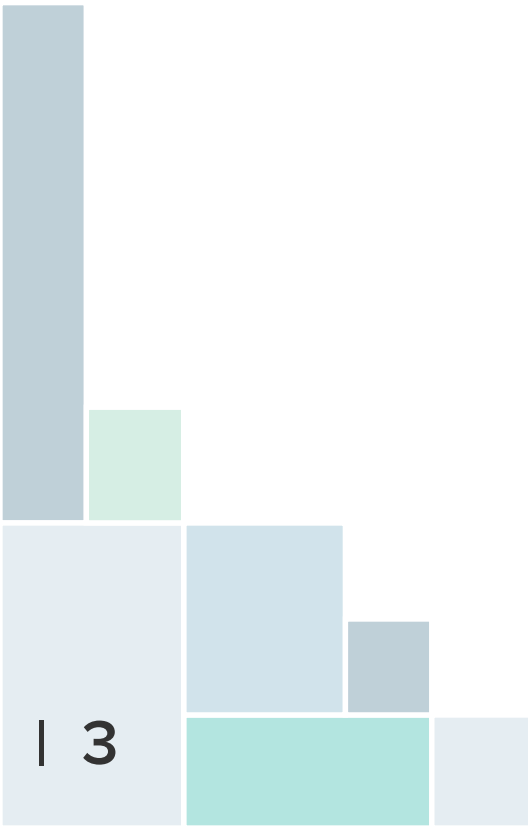
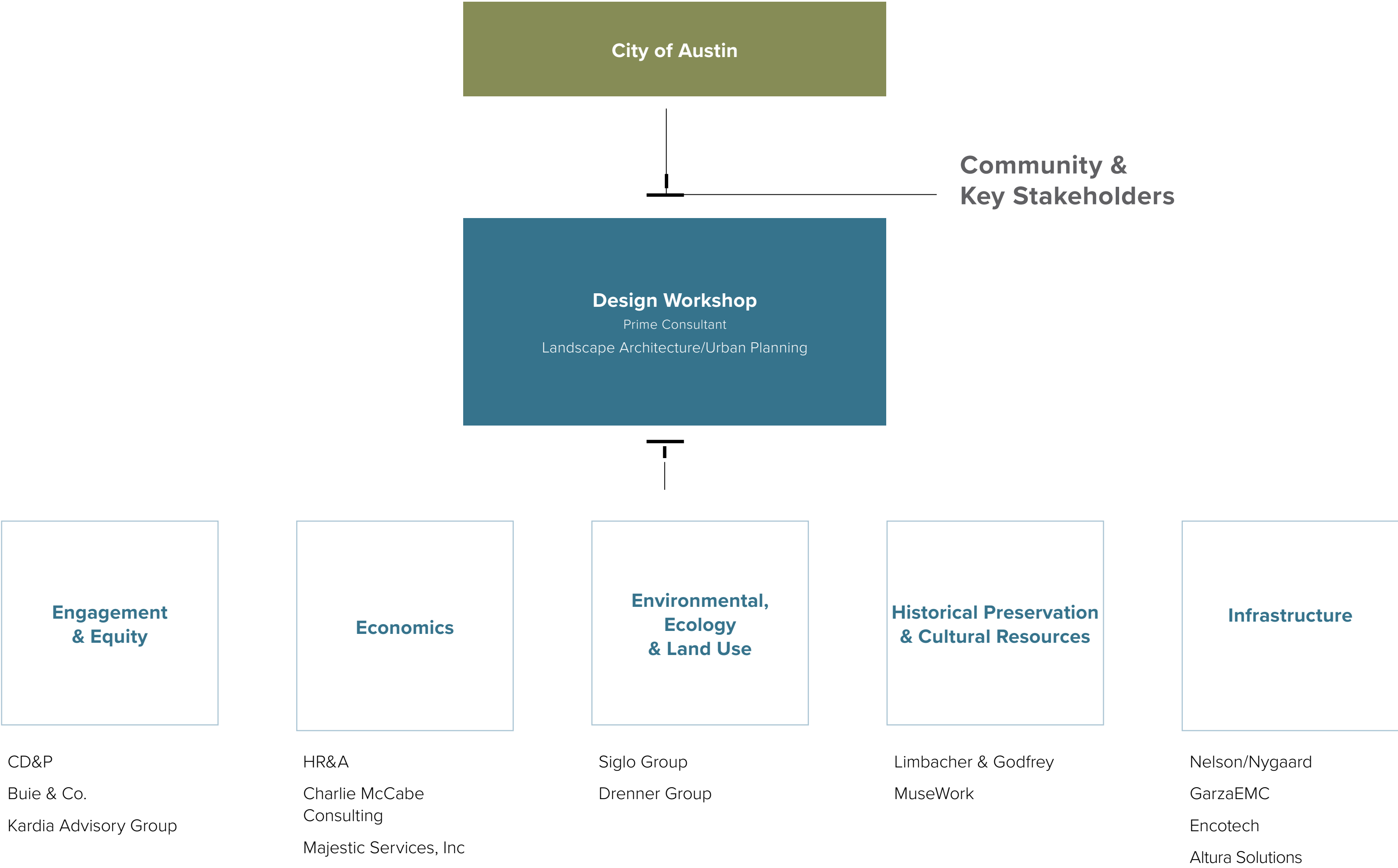


# INTRODUCTION





# TEAM OVERVIEW





# CLIENT/TAG OVERVIEW

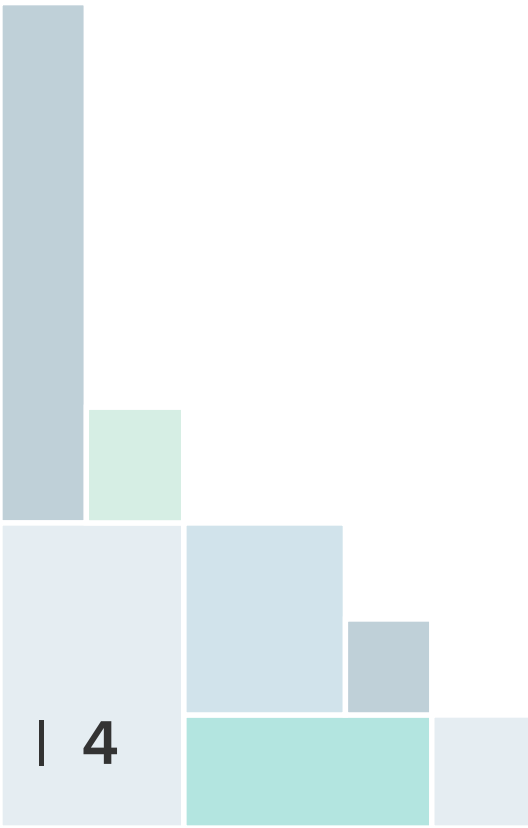
## Client Group

**City of Austin**  
**Parks and Recreation Department**

Ricardo Soliz  
Gregory Montes  
Megan Eckard  
Justin Schneider  
Kasey Corpus

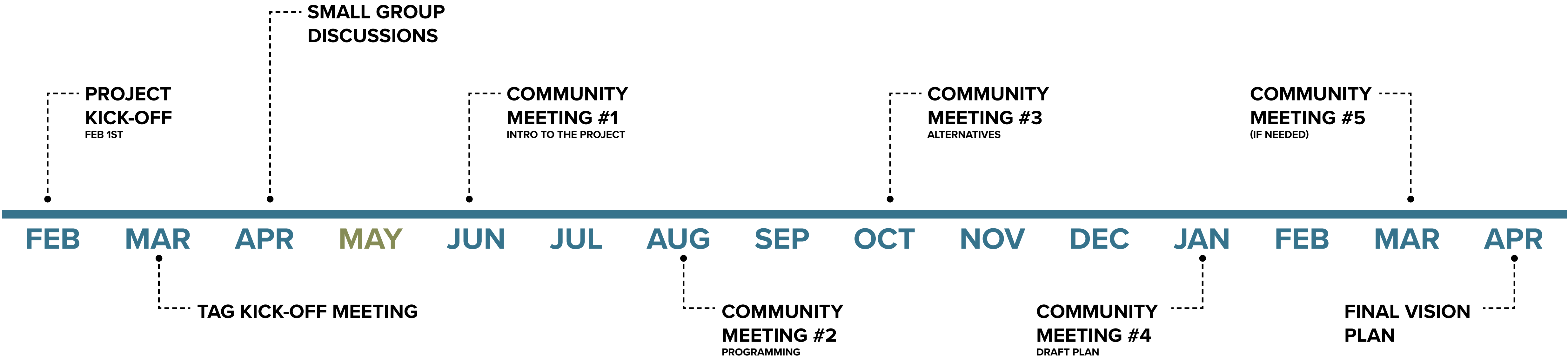
## Technical Advisory Group

PARD  
ATD  
Public Works  
Watershed Protection  
Office of Real Estate Services  
Marketing and Communications Office  
Austin Water  
Austin Energy  
Management Services  
Austin Resource Recovery  
Cap Metro  
TXDOT





# SCHEDULE



Strategic Kick-Off and Project Initiation

- Project Work Plan
- Kick-Off Meeting
- Technical Advisory Group Meetings
- Progress Reports

Site and Contextural Analysis and Data

- Site Analysis and Needs Assessment Report
- Presentation of the Site Analysis and Needs Assessment Report**
- Presentation of the Site Analysis and Needs Assessment Report to City Commission, Boards, City Manager and City Council
- Community Wide Survey

Project Meetings

- Project Meetings Materials
- Stakeholder Contract
- List Meeting Minutes and Summaries

Stakeholder/Community Participation

- Community Outreach and Engagement Plan
- Community Engagement and Outreach

City Staff, Public Review/Boards, Commissions, Council Review

- Draft Vision Plan
- Final Draft Vision Plan Document
- Presentation of Final Draft Vision Plan Document to City Commission, Boards, City Manager and City Council

Vision Plan Report Preparation

- Provide a Needs Assessment Report
- Preliminary Vision Plan Concepts
- Final Vision Plan Document

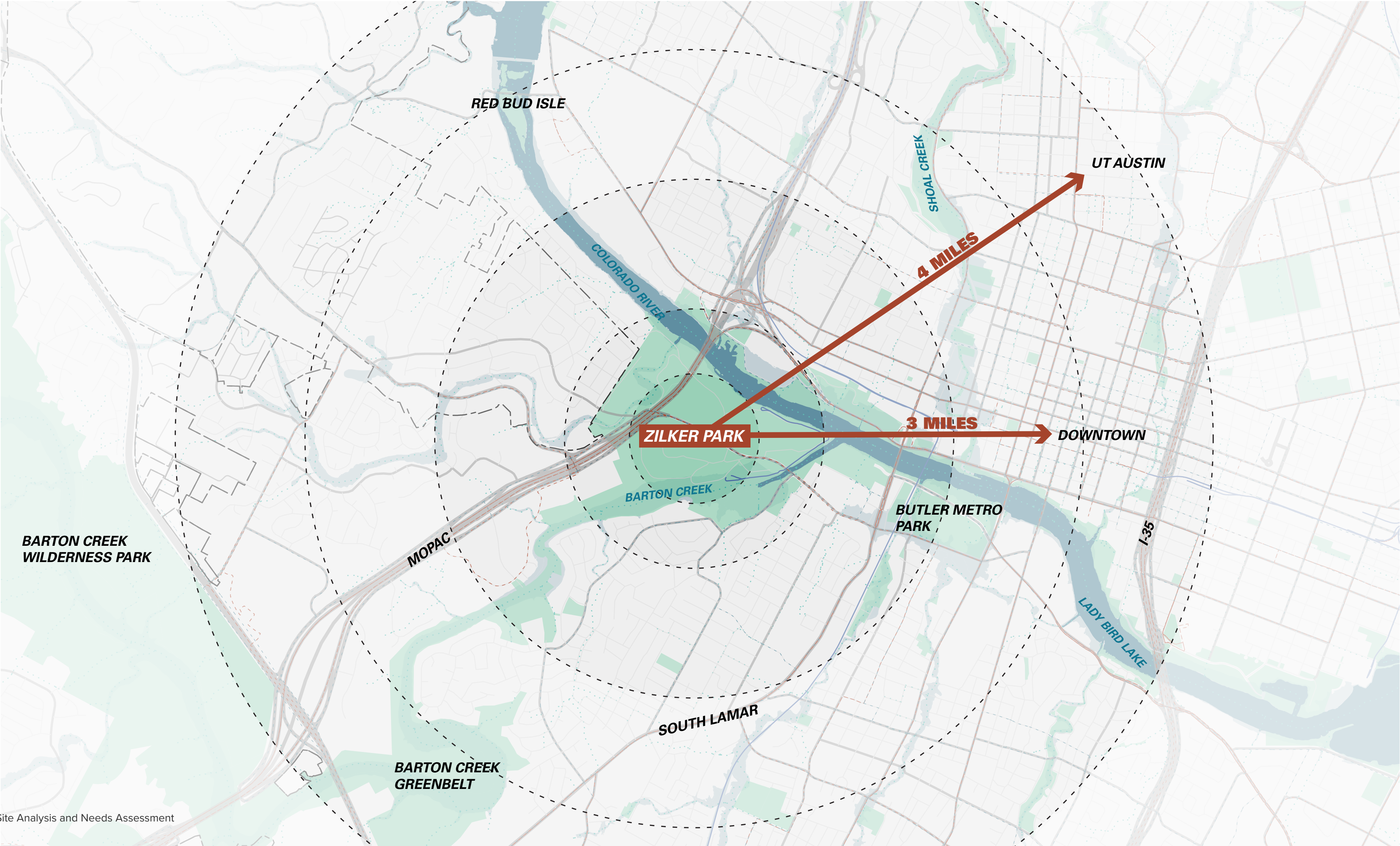




# SITE ANALYSIS AND NEEDS ASSESSMENT REPORT



# REGIONAL CONTEXT

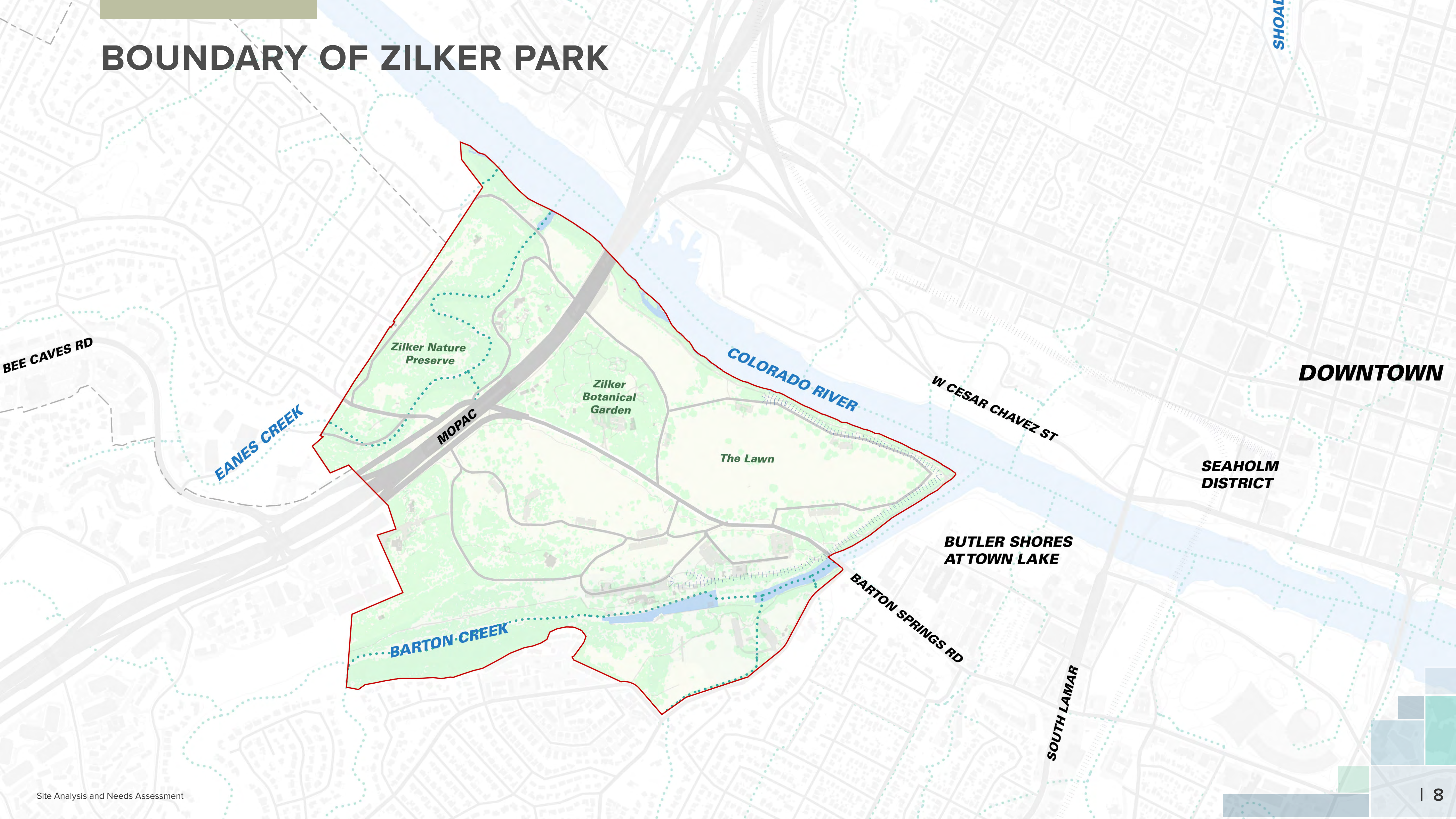


- City Limit
- Roadway
- Buildings
- - - Bus Routes
- - - CAMPO Bikeway
- ..... Creek Line
- Lake
- Park
- 100yr Floodplain

0 2,000 4,000 8,000 Ft

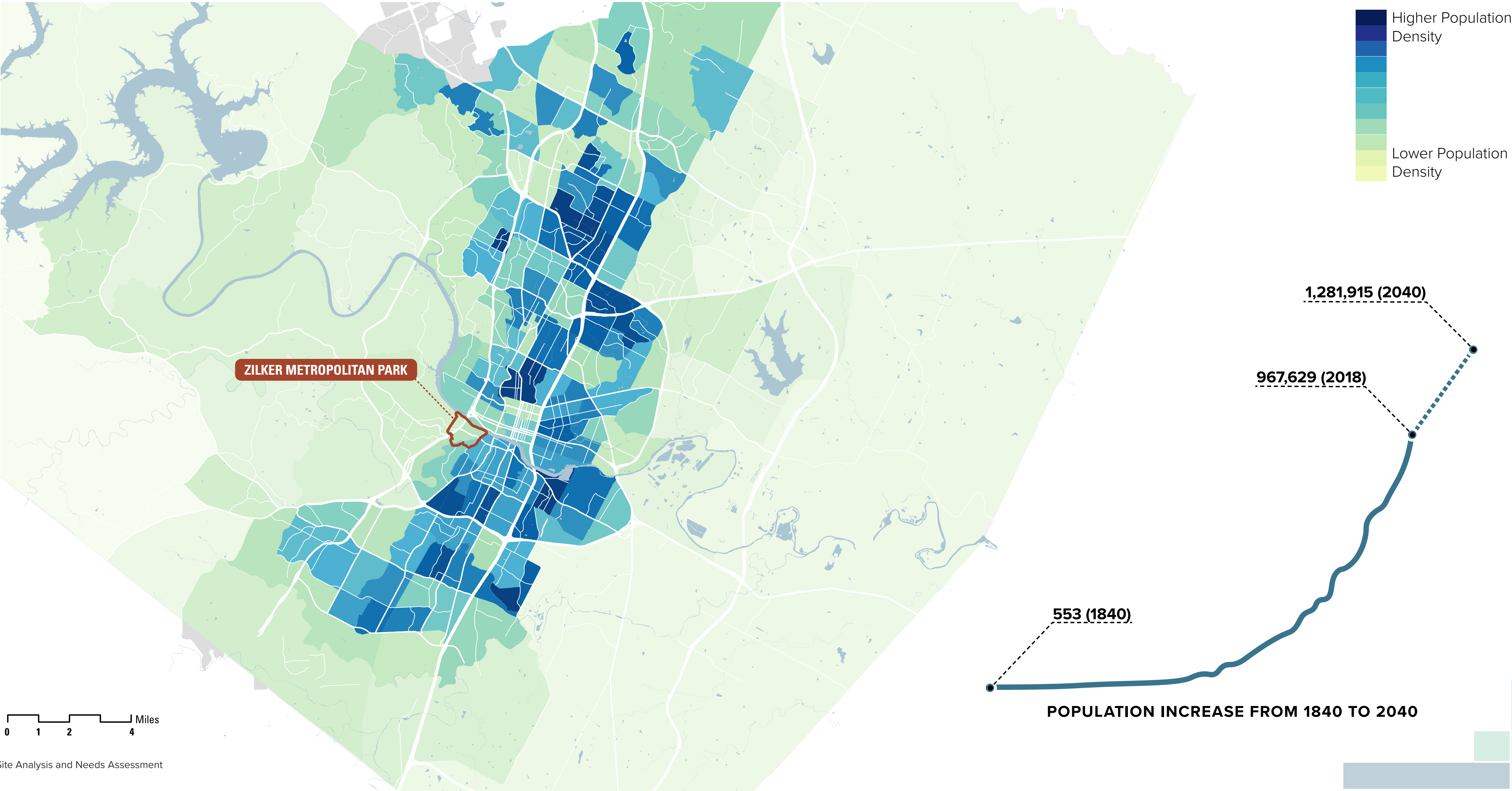


# BOUNDARY OF ZILKER PARK





# AUSTIN POPULATION PROJECTION





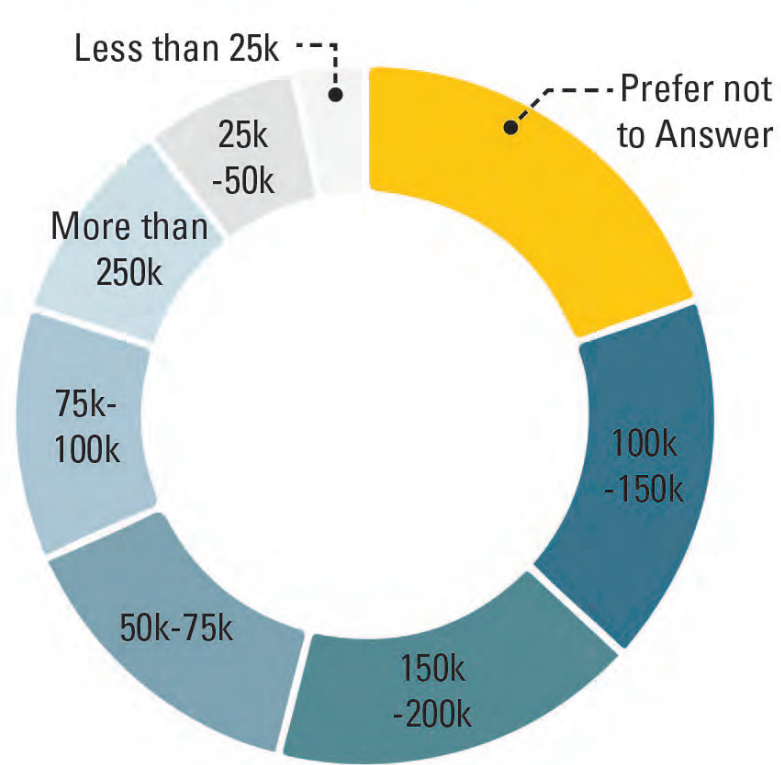
# ZILKER VISITOR DEMOGRAPHICS

81,011 Responses (2,952 Participants)

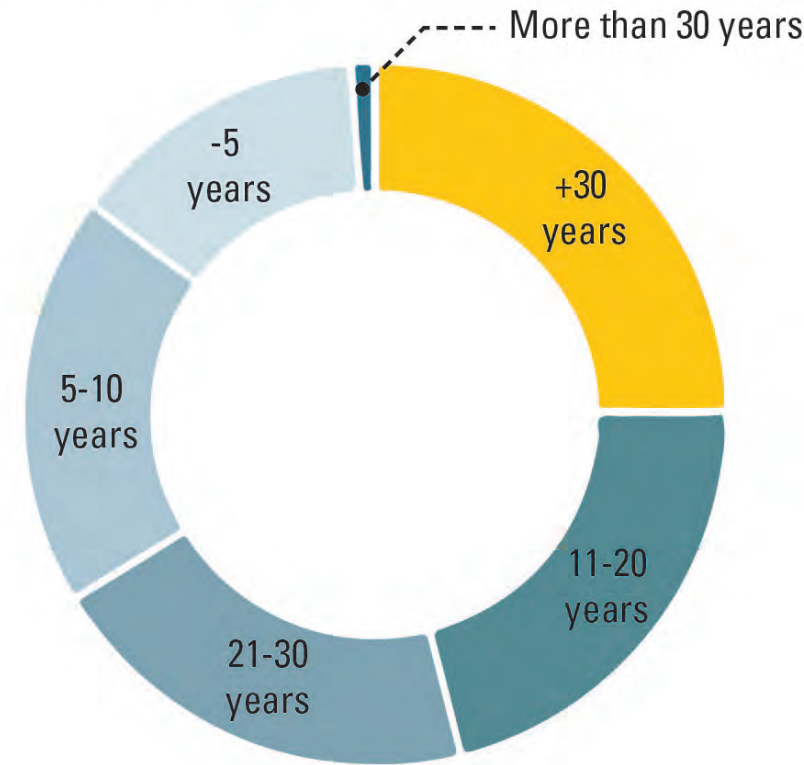
What is your zip code?



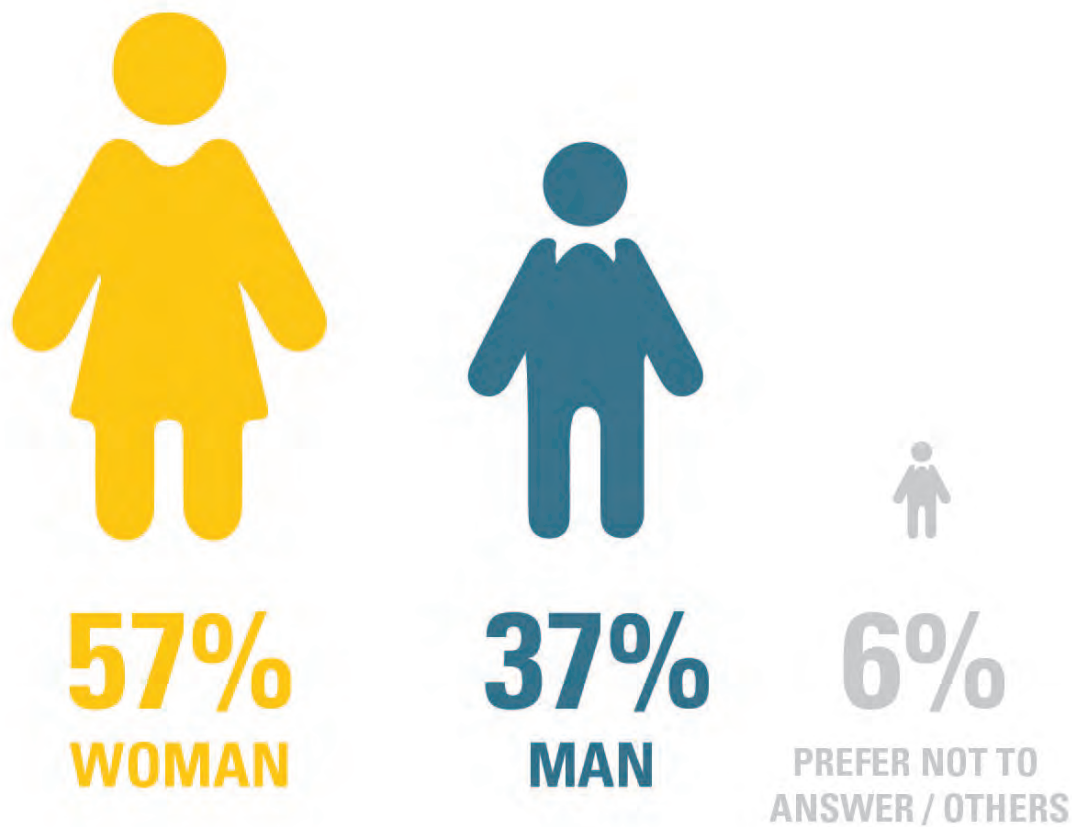
What is your household income?



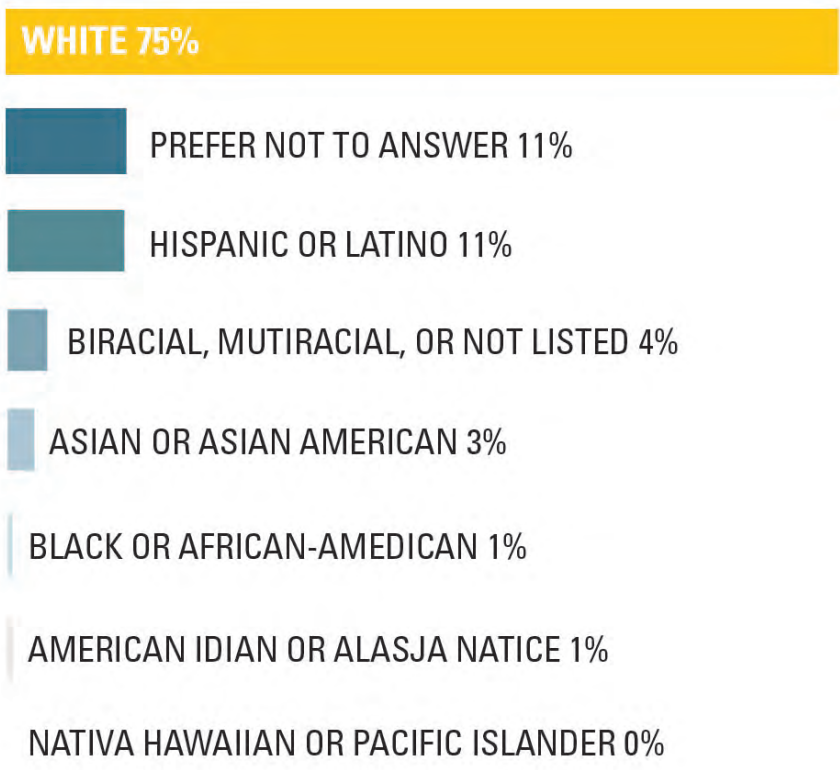
How long have you lived Austin?



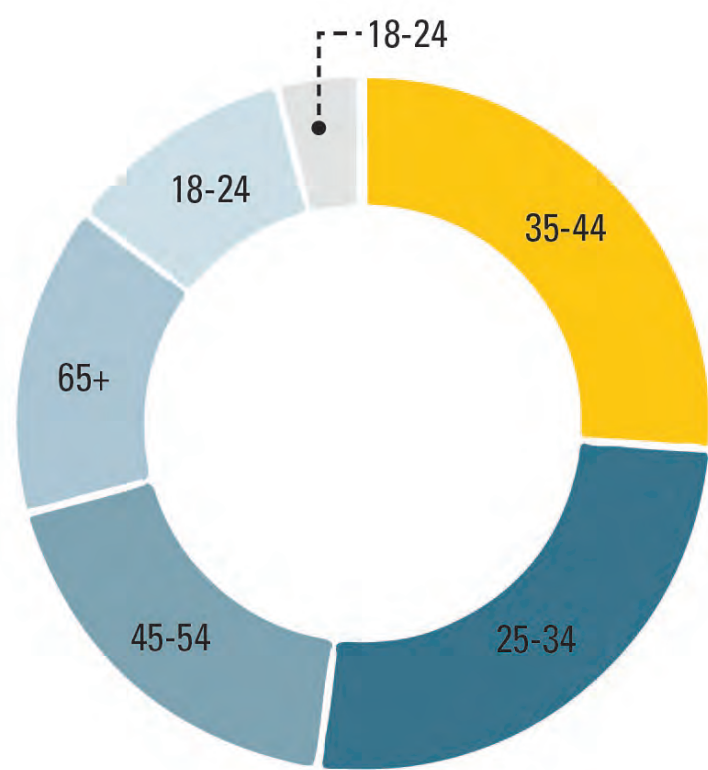
What is your gender?



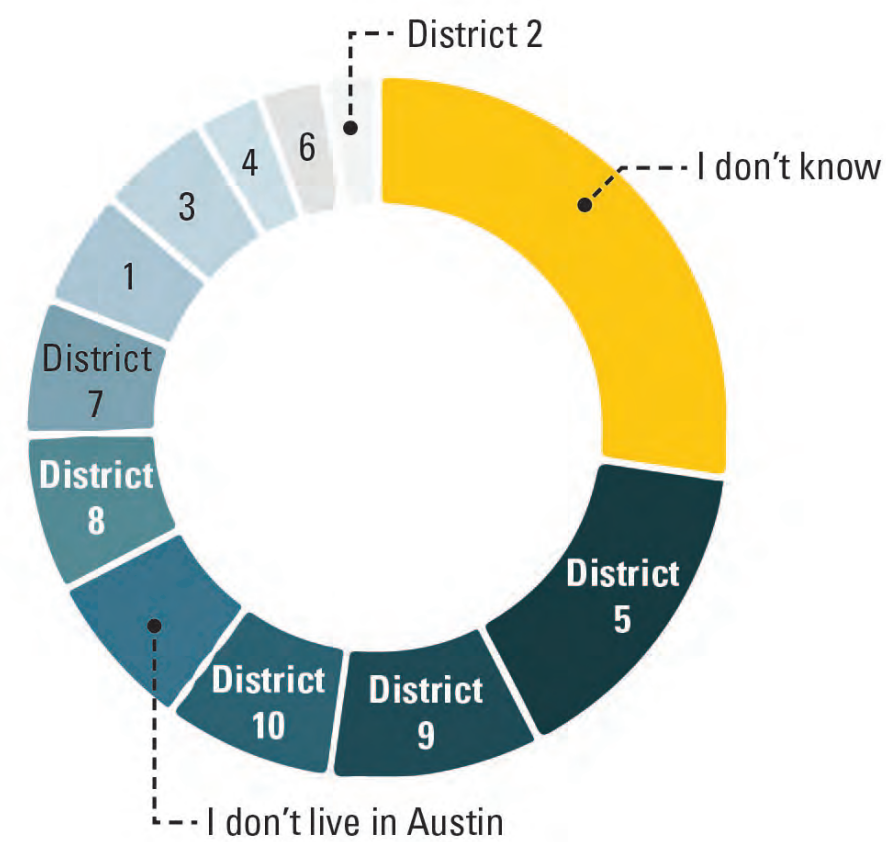
What is your race/ethnicity?



What is your age range?

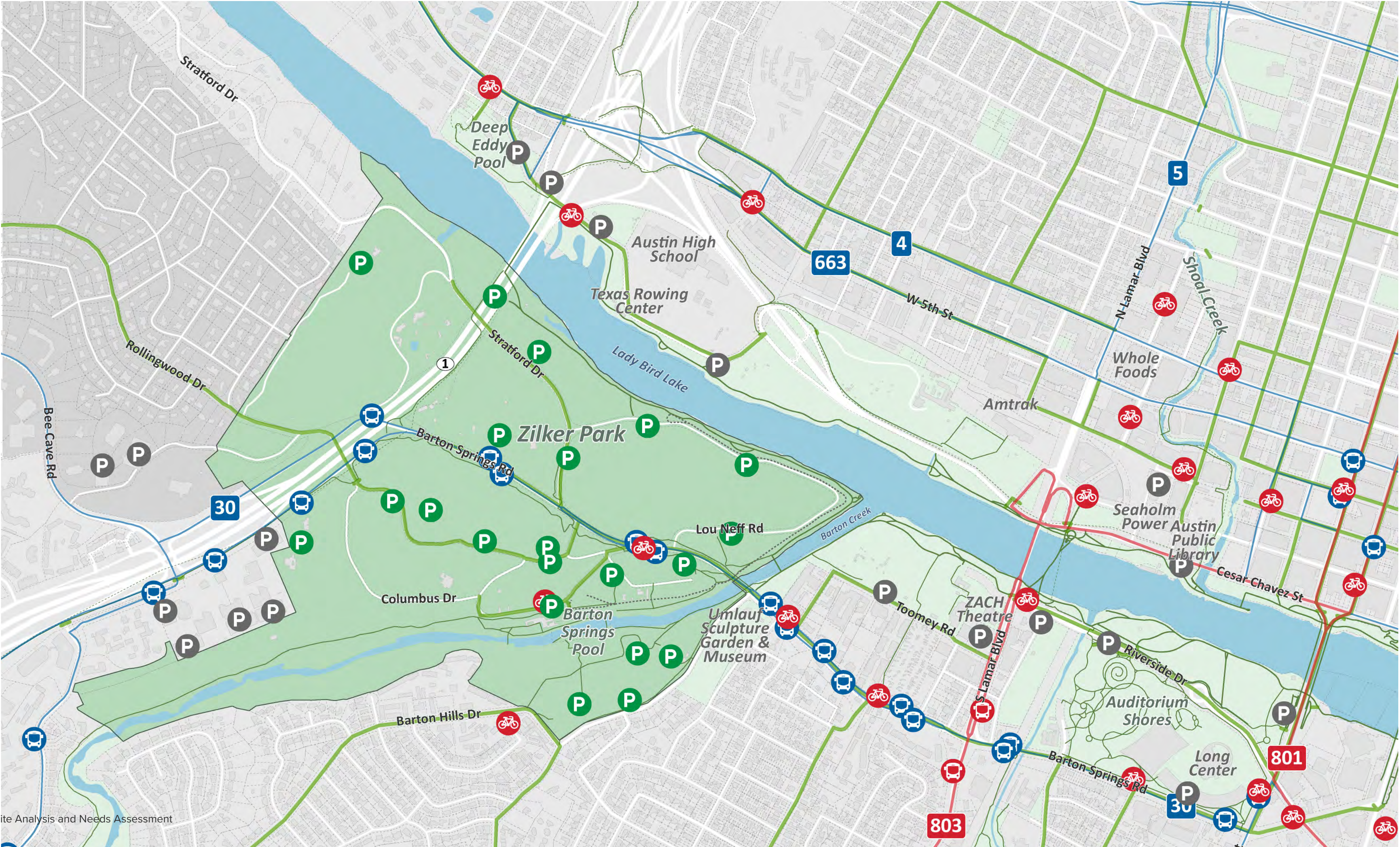


Which City Council District do you live in?





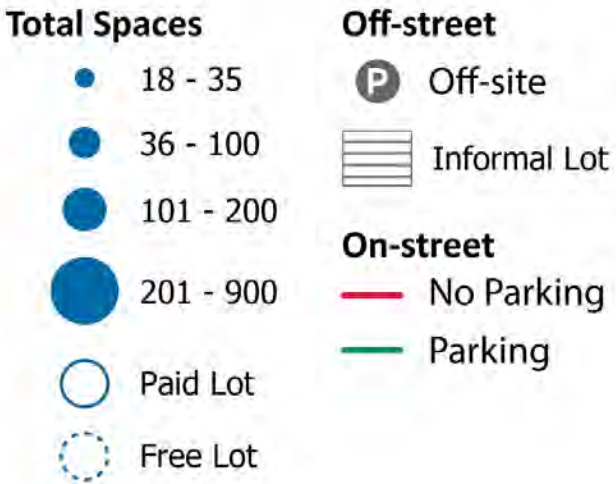
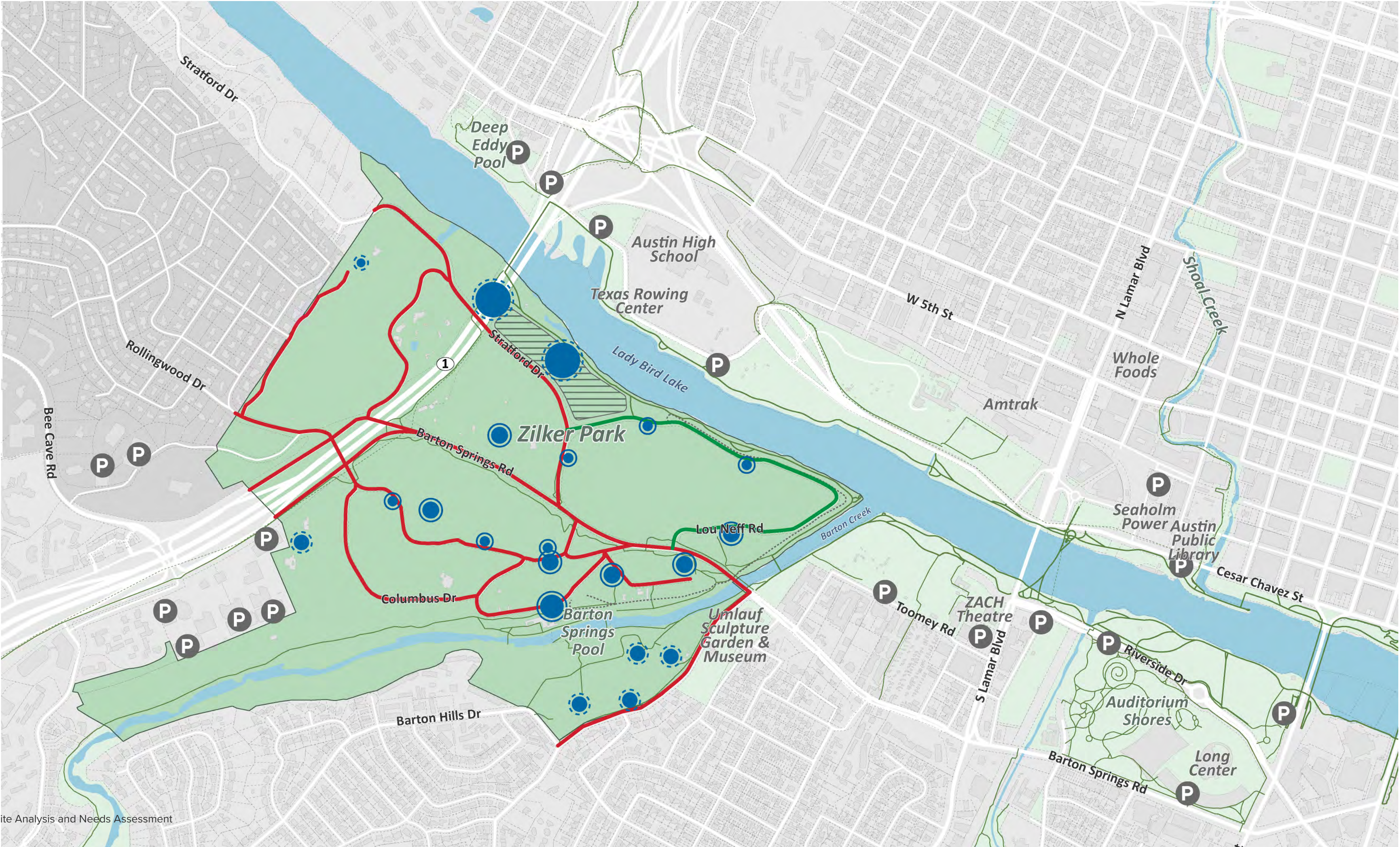
# OVERALL MOBILITY



- Legend**
- MetroBus Route
  - MetroRapid Route
  - MetroBike Dock
  - Medium to High Comfort Bike Facilities
  - On-site Parking
  - Off-site Parking



# PARKING





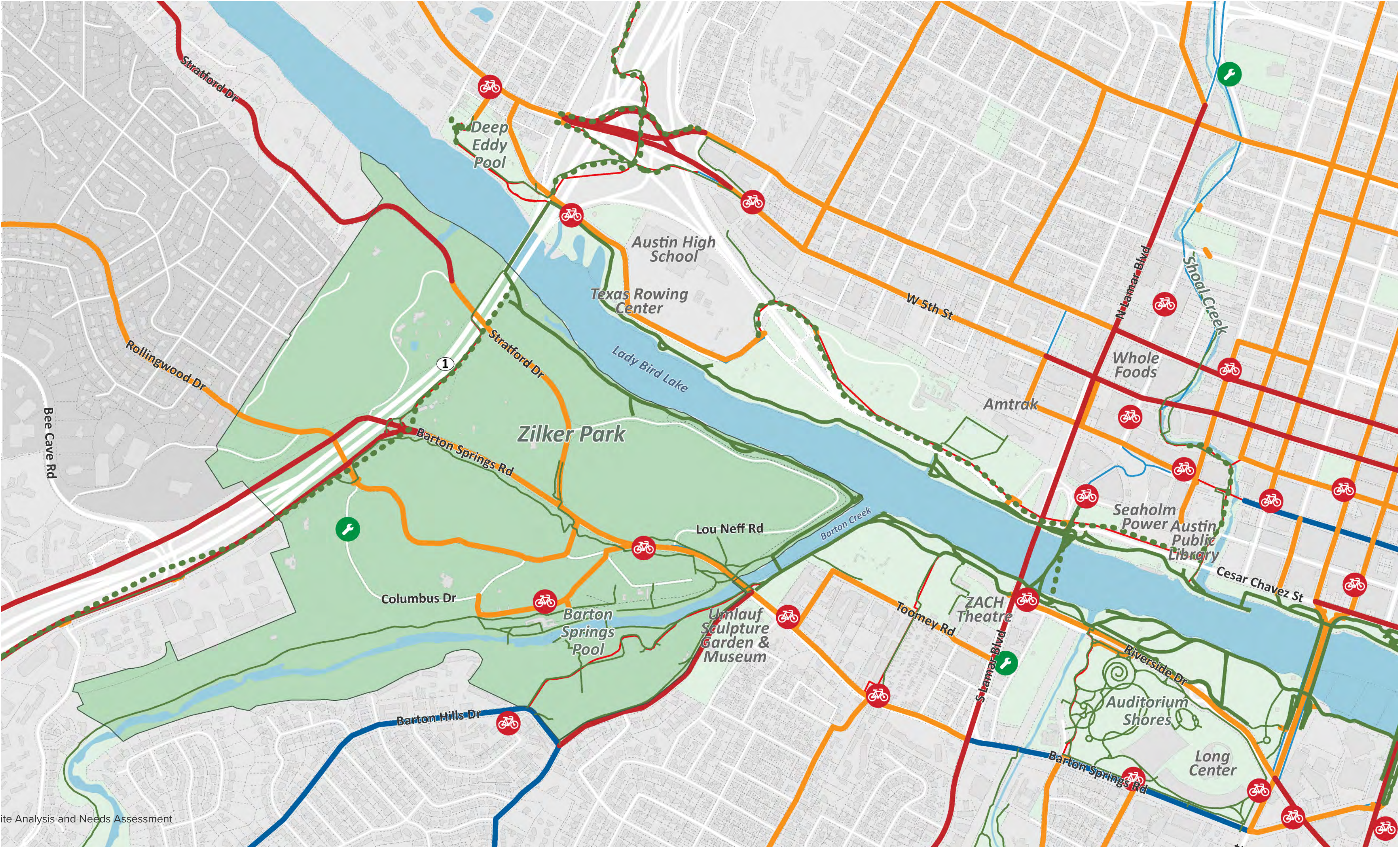
# CIRCULATION



- Legend**
- One-way Traffic
  - Two-way Traffic
  - Pedestrian Signal
  - Medium to High Comfort Bike Facilities
  - Adjacent Trails
  - Butler Trail
  - Urban Trails Planned



# BICYCLE



**Legend**

- MetroBike Dock
- Bike Repair Station

**Trails**

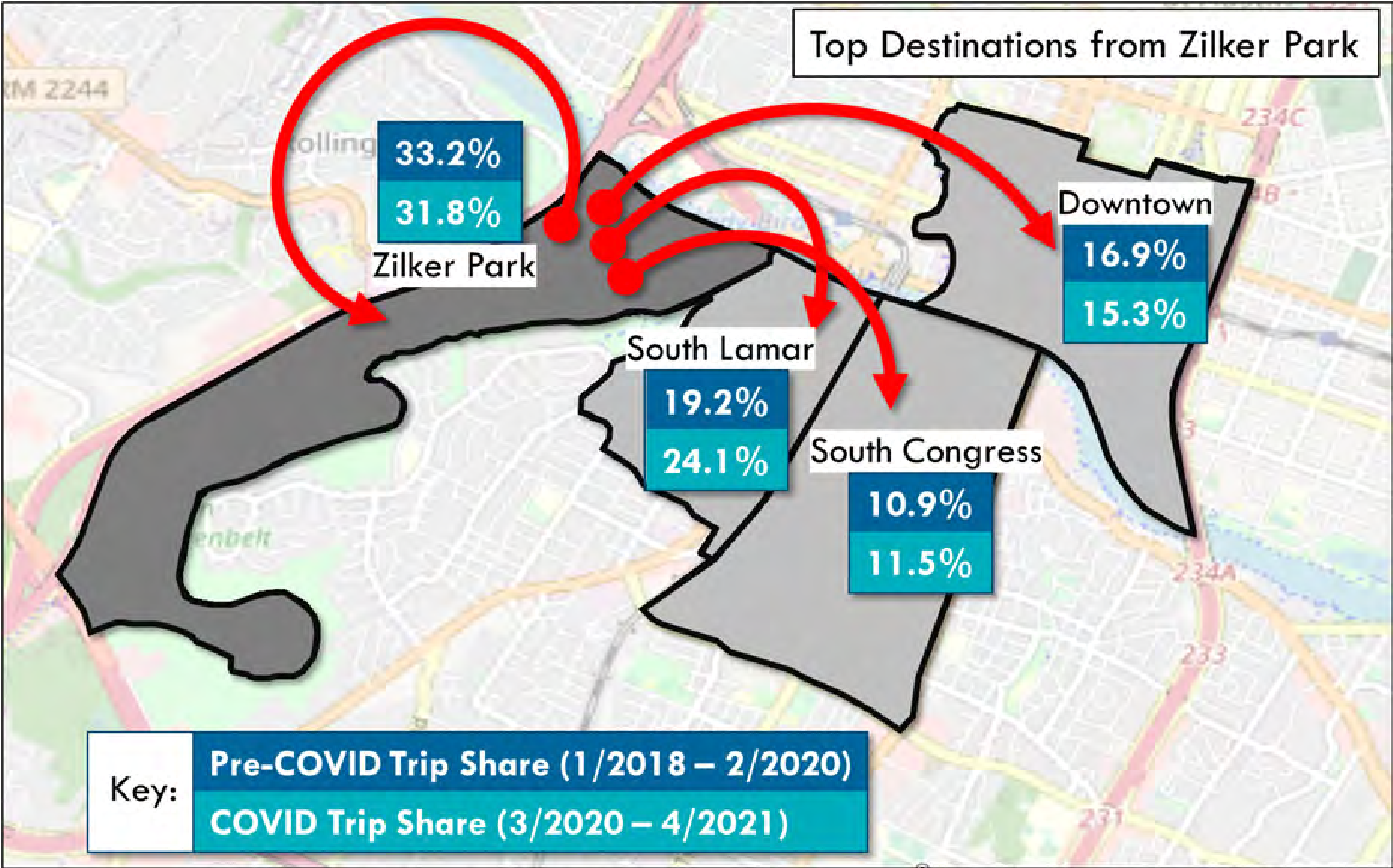
- Adjacent Trails
- Butler Trail
- Urban Trails Planned

**Bike Level of Comfort**

- High
- Medium
- Low



# MICROMOBILITY – BEFORE AND DURING COVID



## Top Destinations from Zilker Park

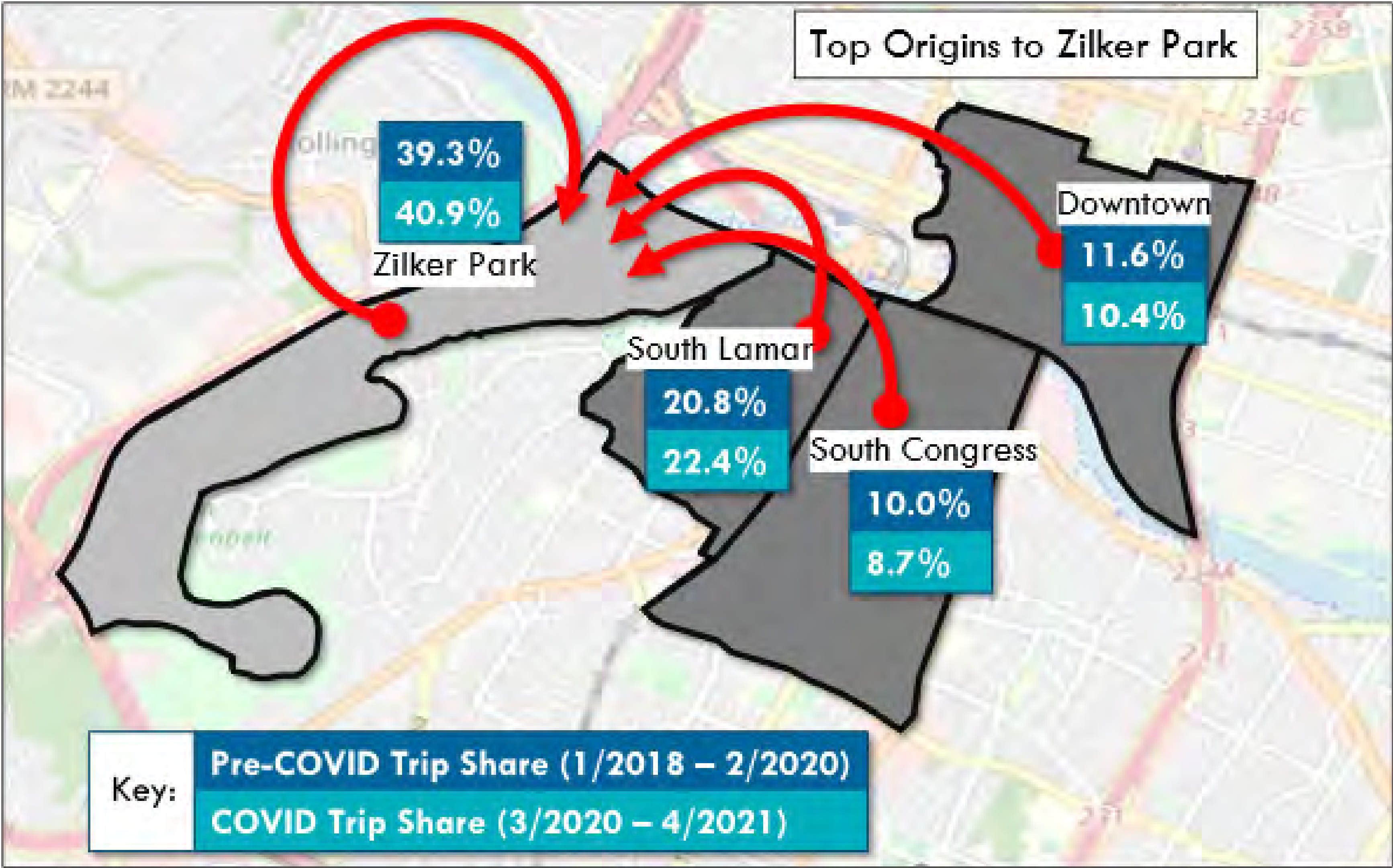
Origins and destinations mostly stayed the same before and during the pandemic.

Why? Accessibility has largely remained the same.

- No major change to infrastructure
- Zilker Park has remained open and accessible through pandemic



# MICROMOBILITY – BEFORE AND DURING COVID



## Top Origins to Zilker Park

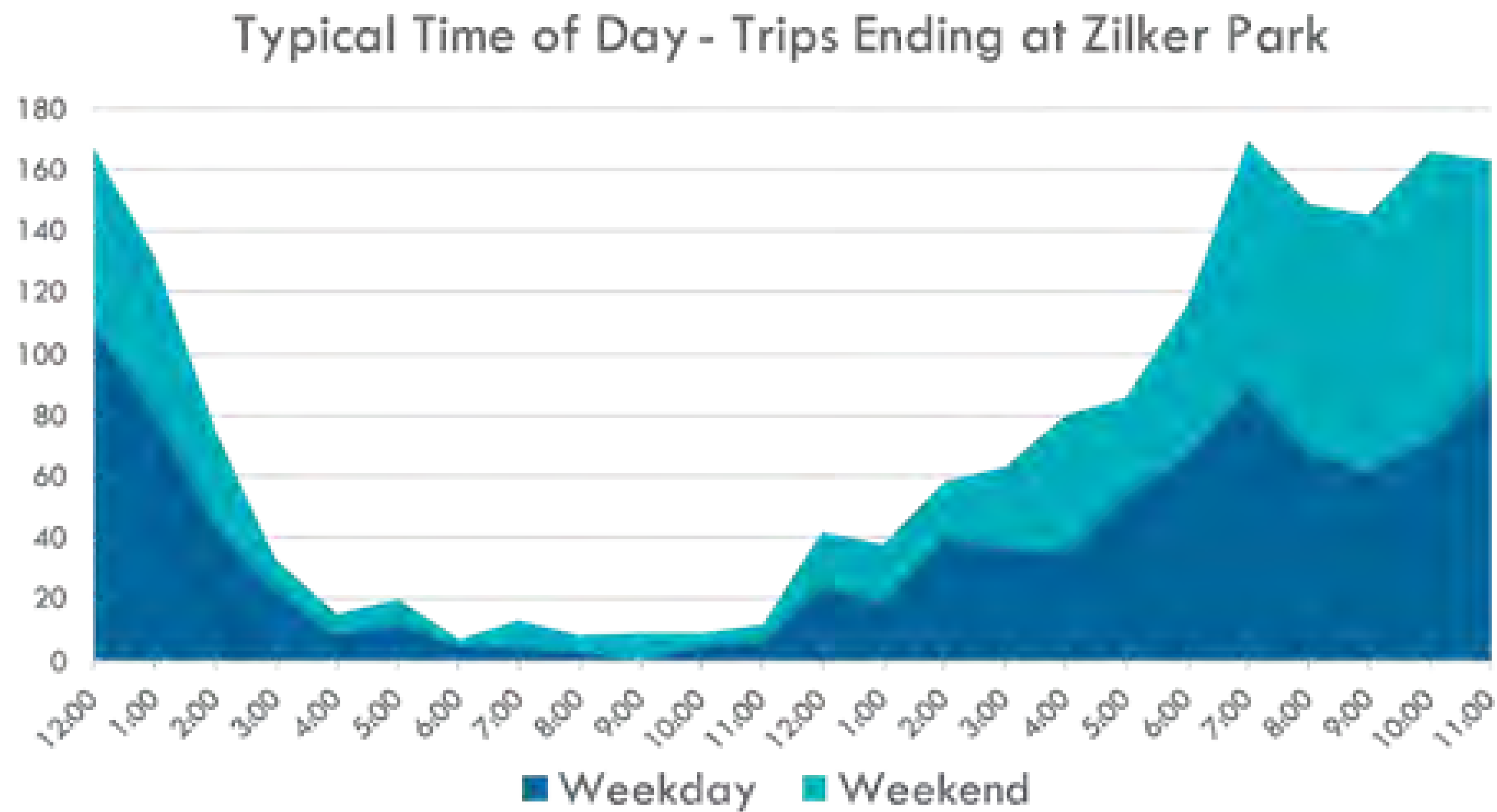
Origins and destinations mostly stayed the same before and during the pandemic.

Why? Accessibility has largely remained the same.

- No major change to infrastructure
- Zilker Park has remained open and accessible through pandemic



# MICROMOBILITY - TYPICAL USAGE

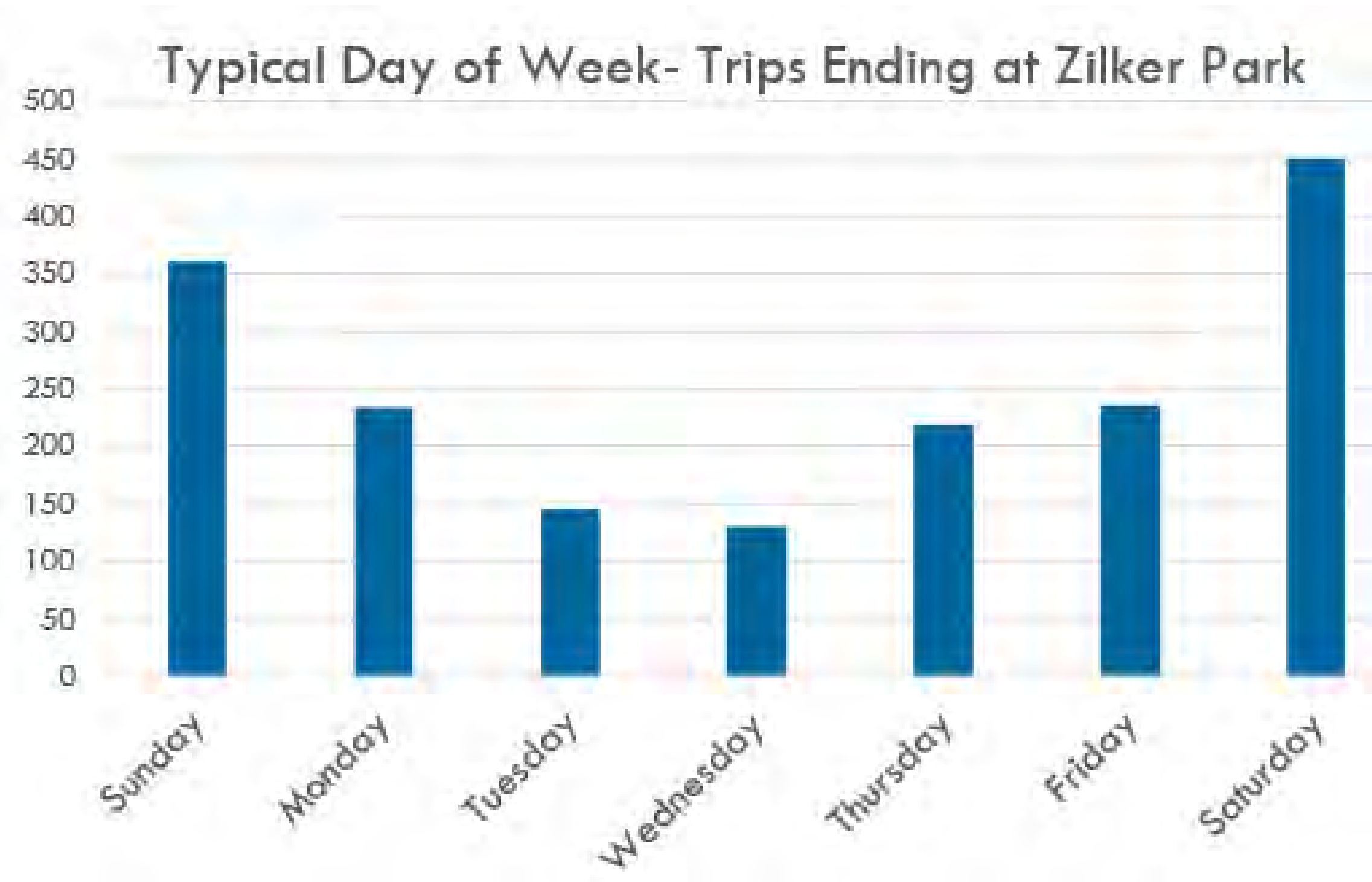


## Time of Day

Similar patterns between weekday and weekend, with weekend trips being higher across the board.

## Day of the Week

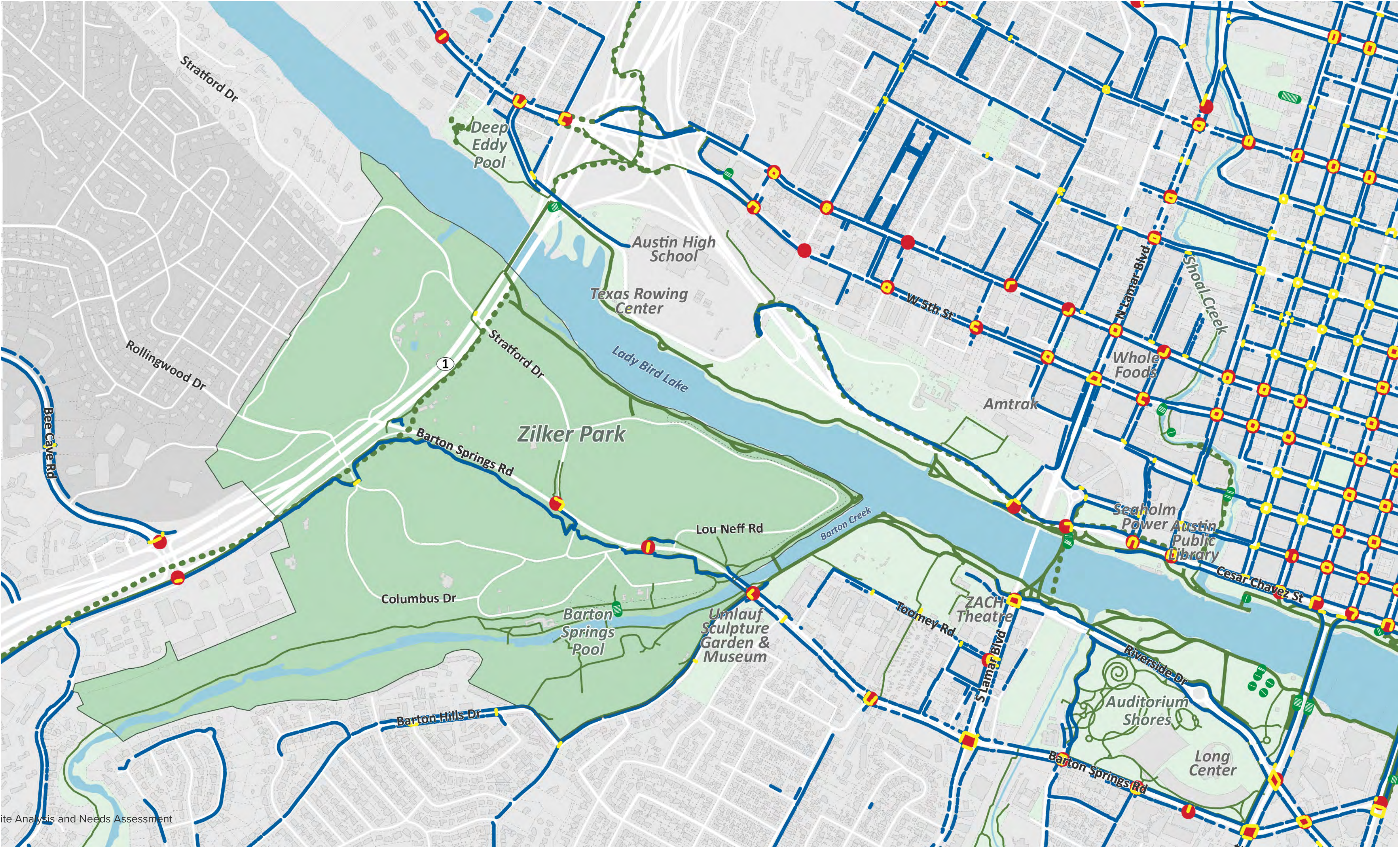
Highest usage on weekends, dipping mid-week



\*Note: Trends from this slide pulled from representative sample.



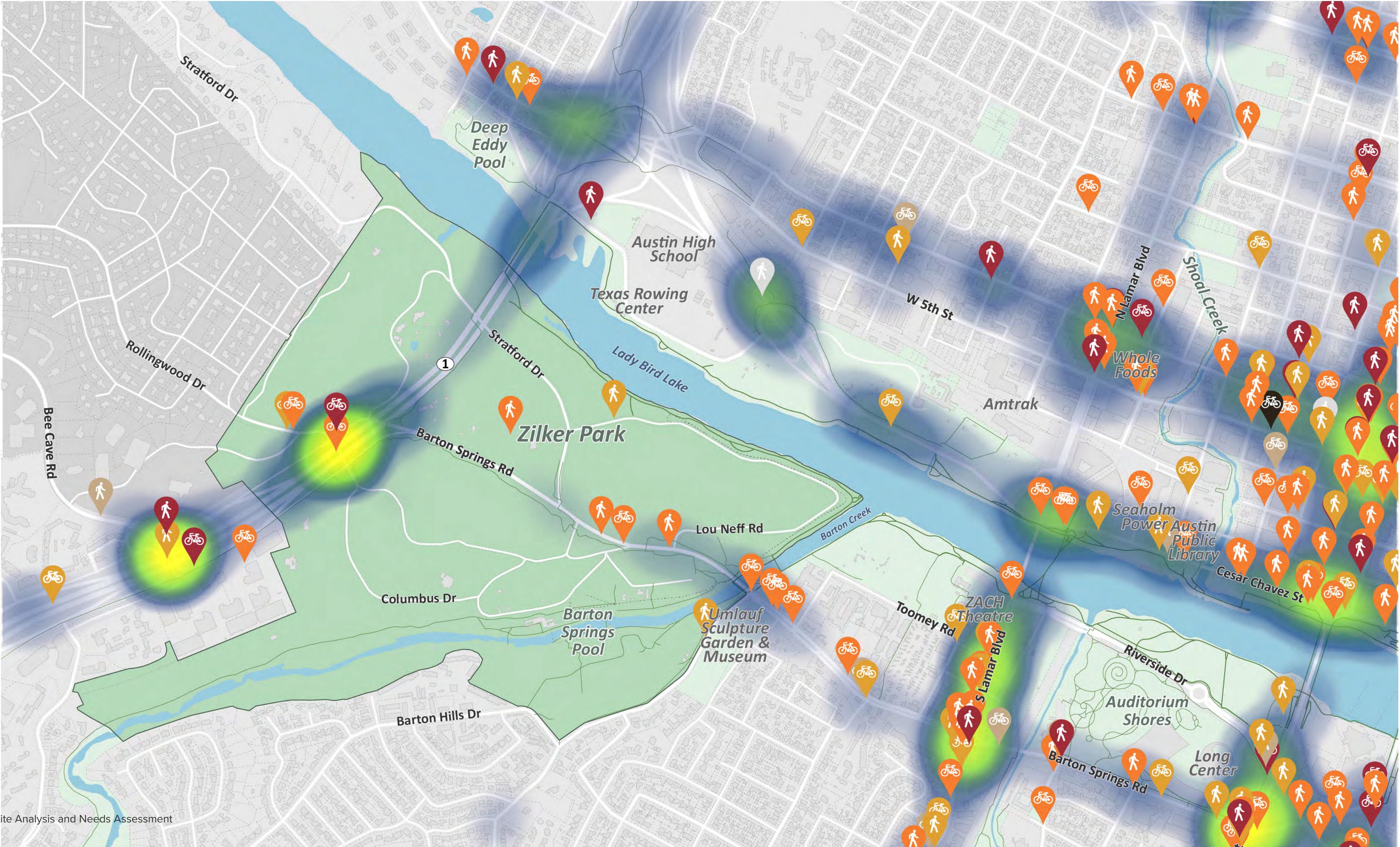
# PEDESTRIAN



- Legend**
- Sidewalk
  - Crosswalk
  - Stairs
  - Pedestrian Traffic Signal
- Trails**
- Adjacent Trails
  - Butler Trail
  - Urban Trails Planned



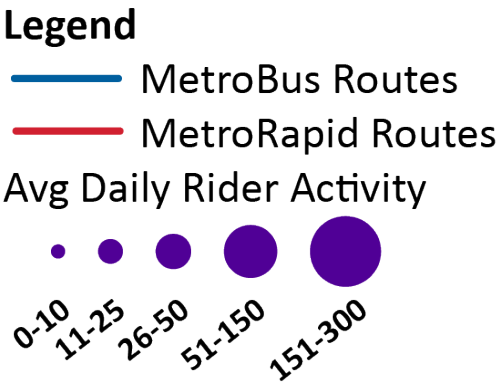
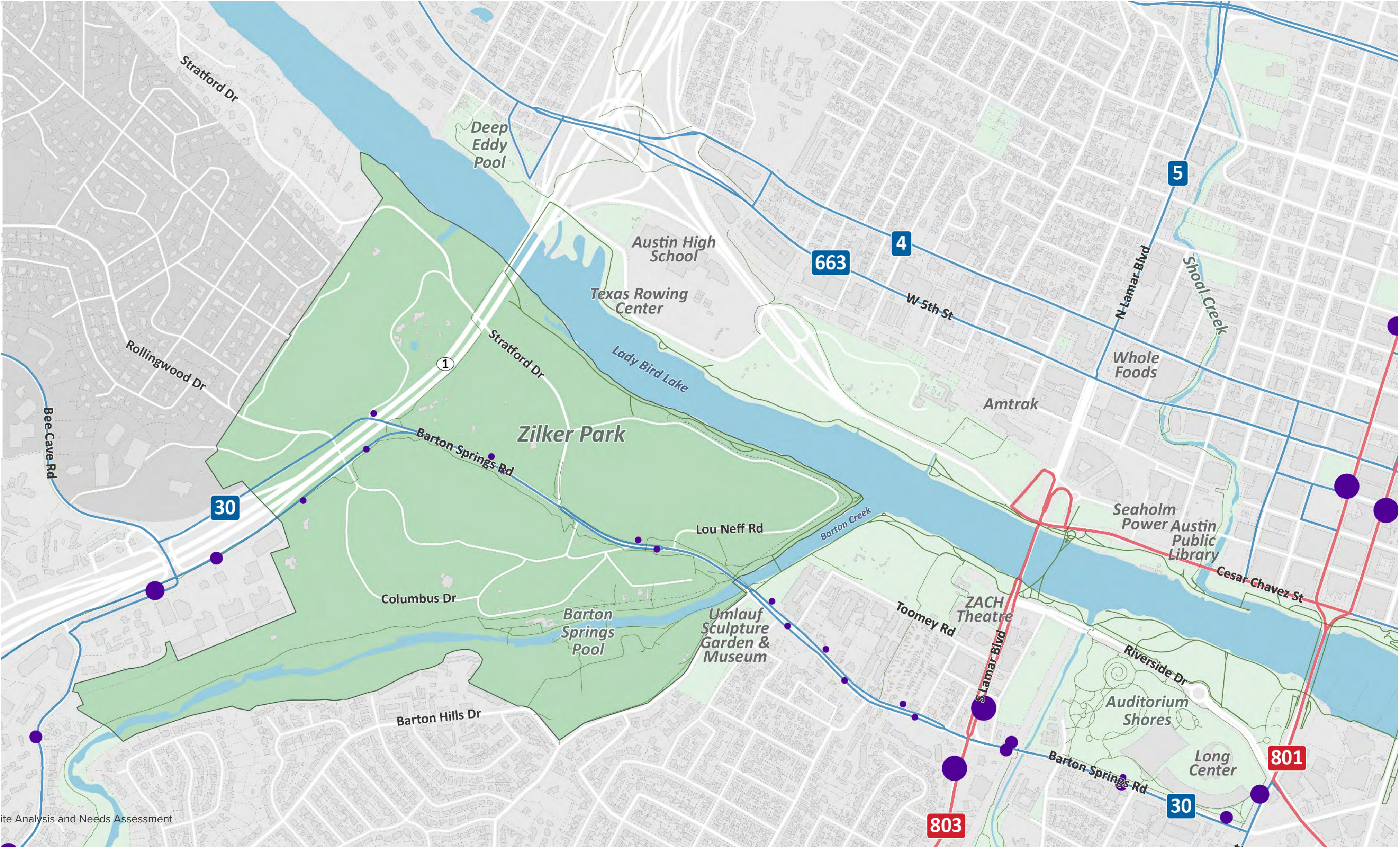
# CRASHES



- Legend**
- One-way Traffic
  - Two-way Traffic
  - Pedestrian Signal
  - Medium to High Comfort Bike Facilities
  - Adjacent Trails
  - Butler Trail
  - Urban Trails Planned



# TRANSIT





# COMMON THEMES

## Circulation

- 1. Parking
- 2. Carrying capacity
- 3. Safe circulation
- 4. Clear wayfinding

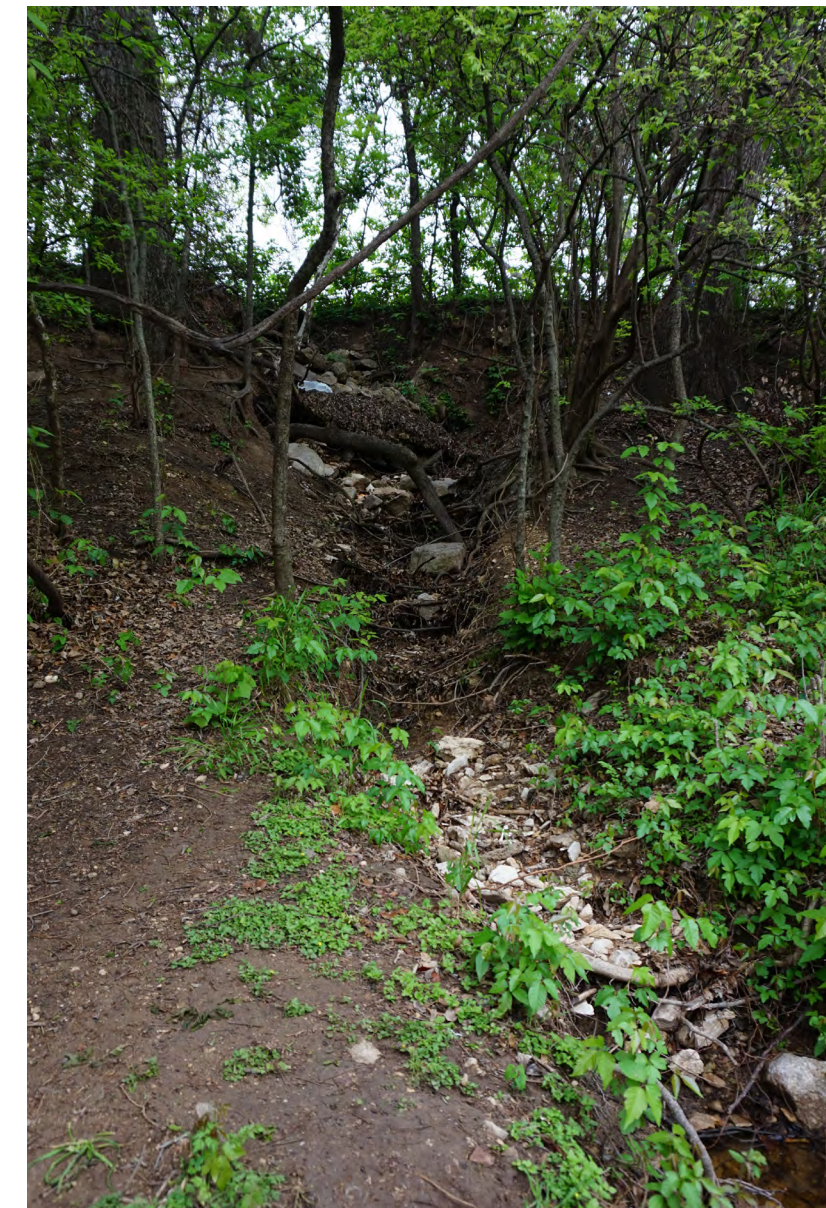
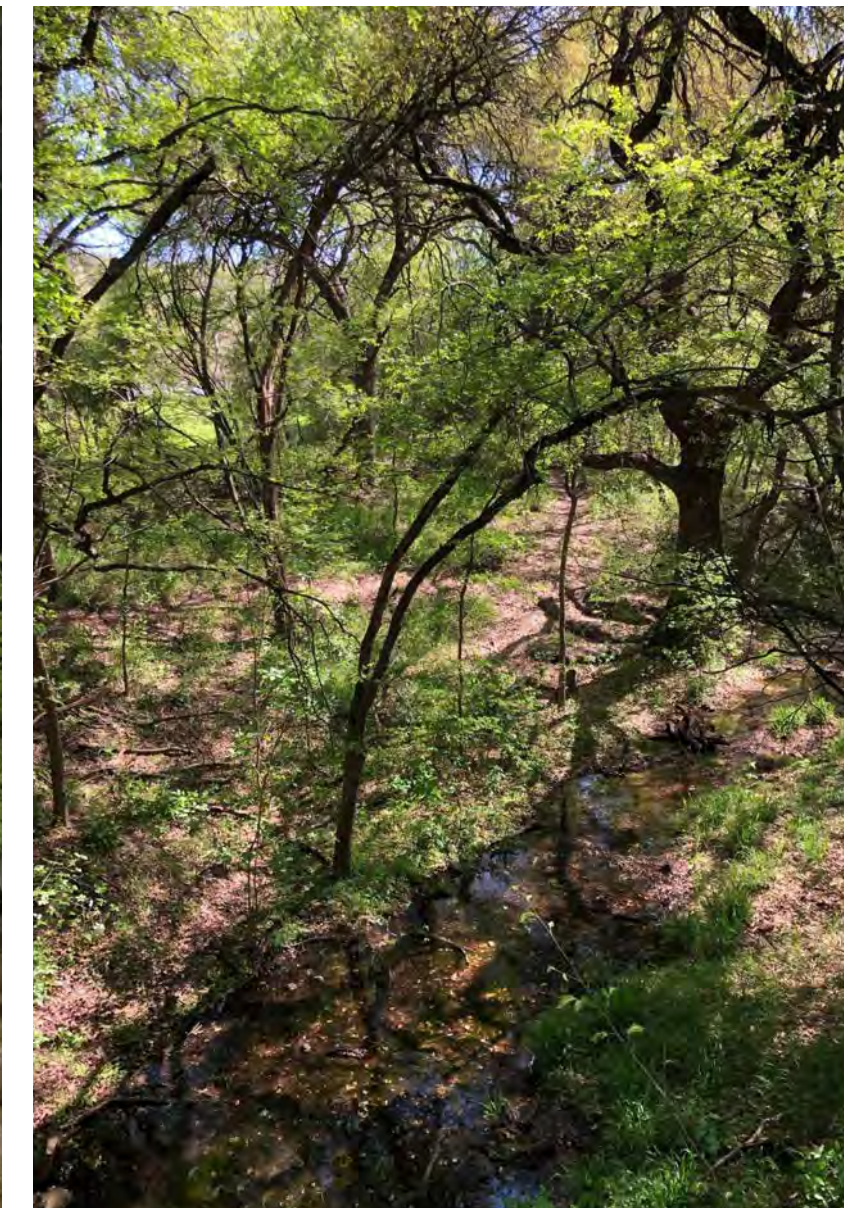




# COMMON THEMES

## Environmental

1. Erosion/compaction
2. Water quality impacts
3. Balance of park use with environmental protections
4. Environmental education
5. Re-wilding
6. Addressing urban heat island effect

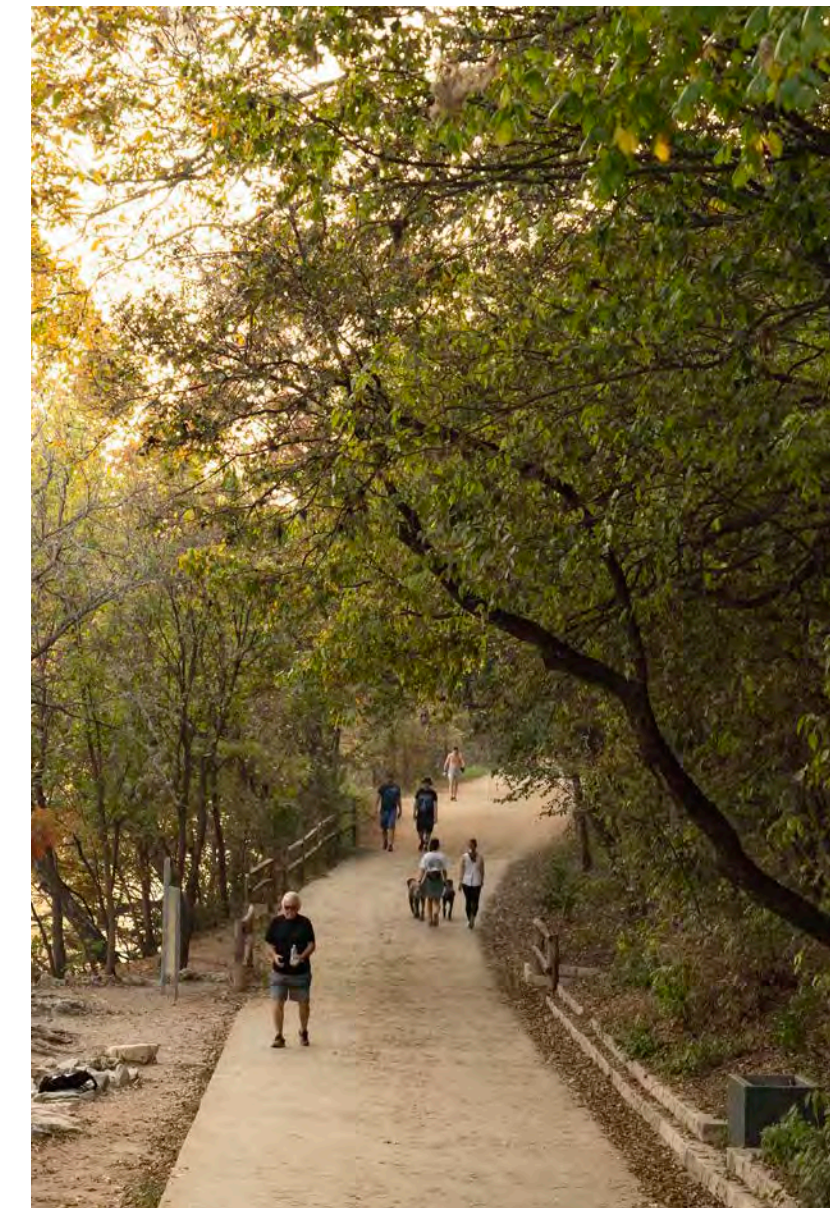




# COMMON THEMES

## Programming

1. Events
2. Park identification





# DISCUSSION





# GUIDING PRINCIPLES

We need your input!

1. Economics
2. Environment
3. Community
4. Character/Placemaking/Art
5. Accessibility
6. Equity and Inclusion

## EXAMPLE

- **EXCEED CUSTOMER EXPECTATIONS.**
- **LIVE THE GOLDEN RULE.**  
: TREAT OTHERS WITH COURTESY AND RESPECT
- **BE A LEADER.**
- **PARTICIPATE AND CONTRIBUTE.**
- **PURSUE EXCELLENCE.**
- **WORK AS A TEAM.**
- **SHARE KNOWLEDGE.**
- **KEEP IT SIMPLE.**  
: MAKE IT EASY FOR CUSTOMERS TO DO BUSINESS WITH US AND FOR US TO WORK TOGETHER





# GOALS

We need your input!

1. Economics
2. Environment
3. Community
4. Character/Placemaking/Art
5. Accessibility
6. Equity and Inclusion

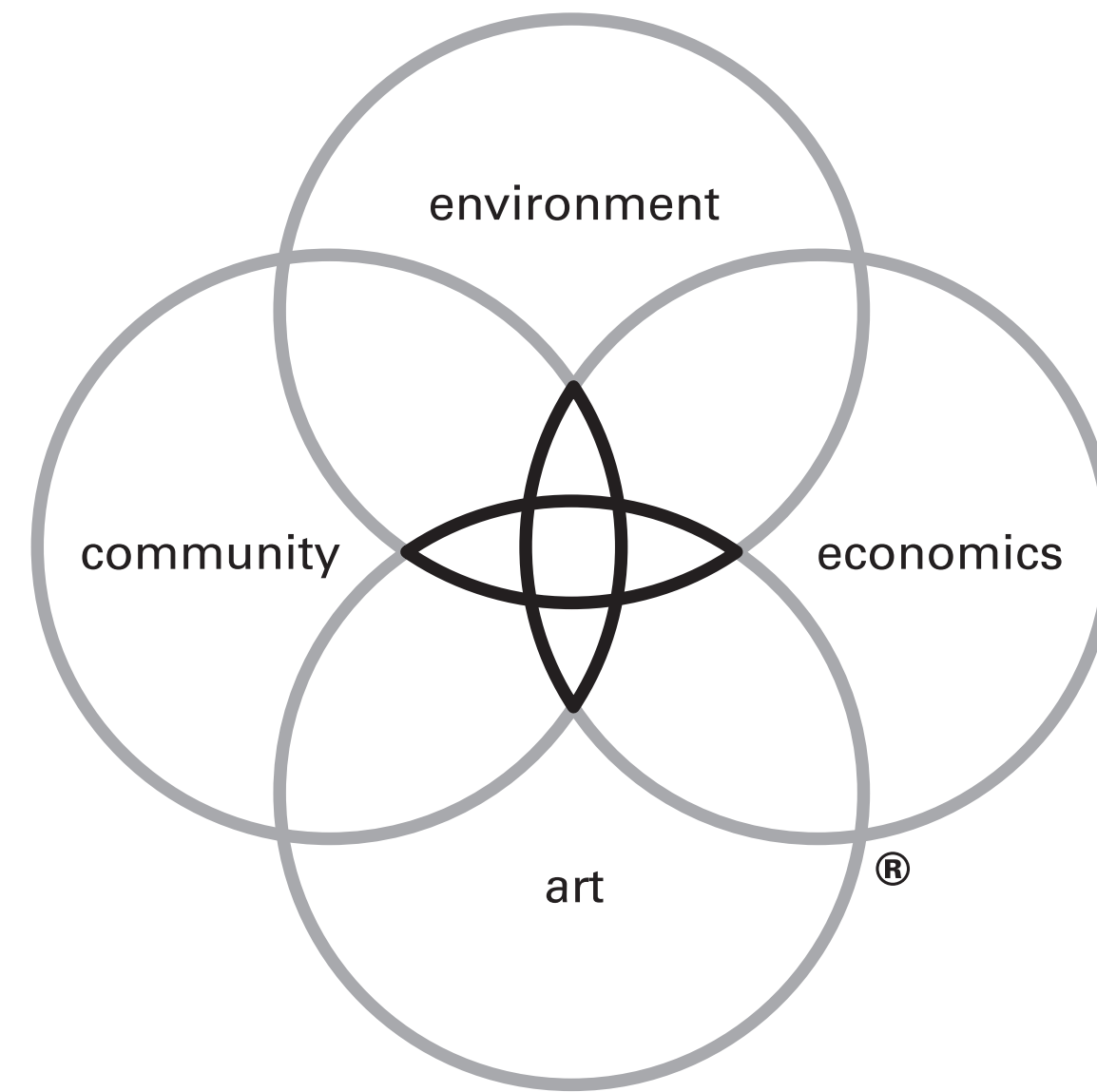
## EXAMPLE

I WILL OBTAIN A JOB AS A HIGH SCHOOL MATH TEACHER WITHIN THREE MONTHS AFTER GRADUATING WITH MY BACHELOR OF SCIENCE IN EDUCATION.

- **SPECIFIC**  
: THE GOAL OF BECOMING A HIGH SCHOOL MATH TEACHER IS WELL-DEFINED
- **MEASURABLE**  
: SUCCESS CAN BE MEASURED BY THE NUMBER OF APPLICATIONS, INTERVIEWS AND JOB OFFERS.
- **ACHIEVABLE**  
: THE GOAL SETTER WILL HAVE THE APPROPRIATE DEGREE FOR THE JOB.
- **RELEVANT**  
: THE GOAL SETTER IS PLANNING TO GET A JOB IN THE EDUCATION INDUSTRY AFTER GETTING AN EDUCATION DEGREE.
- **TIME-BASED**  
: THE GOAL SETTER HAS SET A DEADLINE TO ACHIEVE THEIR OBJECTIVE WITHIN THE THREE MONTHS FOLLOWING GRADUATION.







**DESIGNWORKSHOP**