



Safety & Mobility Study

of the

Ann and Roy Butler
Hike-and-Bike Trail



The Trail
Foundation



**PUBLIC
WORKS**

TIMELINE:

- Oct 2019: Study Commenced
- Mar 4–Jun 30, 2020: Community Engagement Event #1
- Oct 16–Nov 13, 2020: Community Engagement Event #2
- Mar 9, 2021: Memo Sent to City Hall + Press Release
- Mar 10-12, 2021: Community Meetings (#3) & Announced Report to Community

ACTION REQUESTED:

Presentation, discussion and possible action for a recommendation to the Parks and Recreation Department Director to approve the Safety and Mobility Plan for the Ann and Roy Butler Hike-and-Bike Trail.

TTF is currently integrating report recommendations into active projects. It is our request that other organizations working in this trail area prioritize viewing this report, collaborating and integrating the recommendations as well.

THE STUDY REPORT CAN BE DOWNLOADED HERE:

thetrailfoundation.org/safety

CONSULTANT TEAM:



OLDNER
LIGHTING

GUIDING PRINCIPLES:

These were developed by the consultant and project team as the framework to steer recommendations as well as to advise the implementation.

- Maintain Trail character as a place of respite
- Steward the natural habitat and ecology along the Trail
- Use universal design to support accessibility for all
- Accept crowding at locations where more capacity is needed but the park width and slope prohibit widening and alternative routing options are not possible
- Maintain slow speeds on the Trail
- Integrate the Trail into the larger mobility ecosystem
- Expand sense of safety, welcome, and place
- Align with national trail design standards and improvement practices

STUDY OUTLINE

1. Introduction
 2. Study Area
 3. History
 4. Previous Planning Efforts
 5. Existing Conditions
 6. Equitable Engagement
 7. Potential Project Development
 8. **Potential Safety and Mobility Projects**
 9. Implementation Priorities
-
- The diagram illustrates the study outline with groupings and arrows. A large blue curly bracket groups items 1 through 5, with the text 'Where are we starting from?' to its right. A smaller blue curly bracket groups items 6 through 7, with the text 'How we identified projects' to its right. Item 8, 'Potential Safety and Mobility Projects', is bolded and has a blue arrow pointing to it from the text 'What are the projects?'. Item 9, 'Implementation Priorities', has a blue arrow pointing to it from the text 'What comes first?'.
- Where are we starting from?
- How we identified projects
- What are the projects?
- What comes first?

COMMUNITY ENGAGEMENT

Community Input Maps & Surveys

SURVEY & WIKIMAP

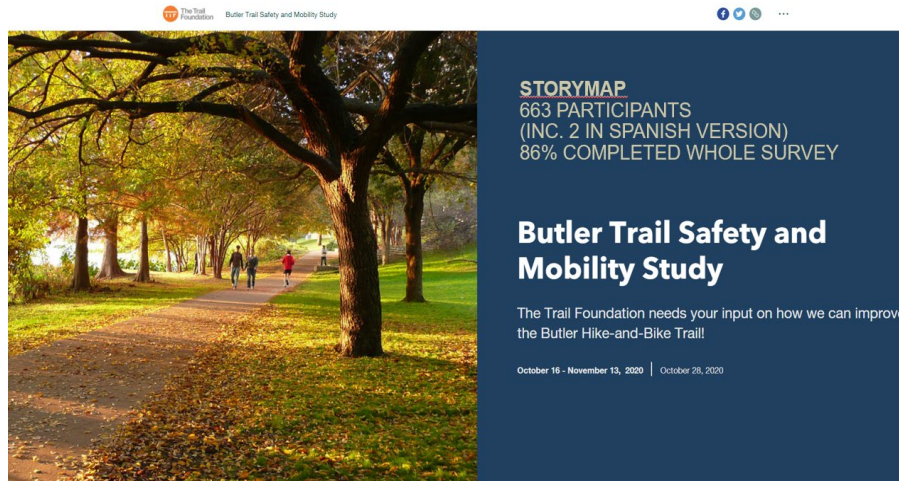


Opened: March 4th
Closed: June 30th

89 respondents to the online survey



95 additions to the [wikimap](#)



Focused Conversations

Conversed with a dozen of the 54 groups reached out to representing demographics of people within biking distance of the Trail, community-based organizations, elected officials, major employers and business associations, and organizations invested in trail and open space access in Austin.

Because of the global pandemic, in-person engagement was not possible. Phone calls were utilized for this effort and the timeline of outreach was doubled to enable more time for reaching groups.

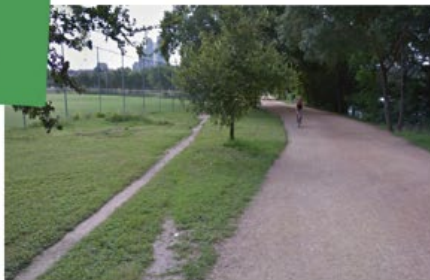
TOP COMMUNITY CONCERNS:

Priority	Name of Issue	Key Comments from Community
1 st	Trail Width	Conflict between travel speeds and etiquette between user modes
2 nd	Surface Conditions	Desire to keep “natural” yet provide ADA and stroller access
3 rd	Connections to the Network	Increase opportunities to commute via trail
4 th	Lighting	Prefer low-light conditions, certain areas vehicle headlights cause blinding situation
5 th	Accessing the Trail	Add access points along the network and provide clear, directional access to the trail from locations further out
6 th	Directional Signage	Limited signage resulting in excess social trails





IF

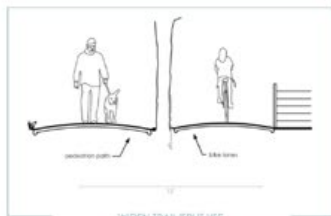


the path is widening from social paths...

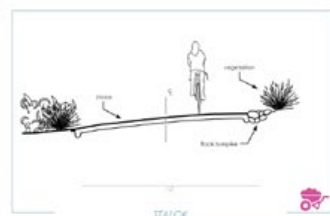
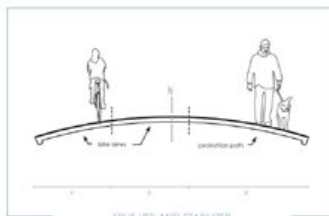


there are steep grades and erosion...

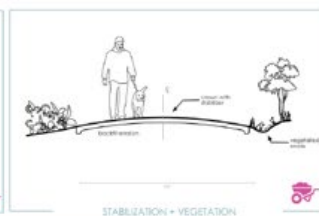
THEN



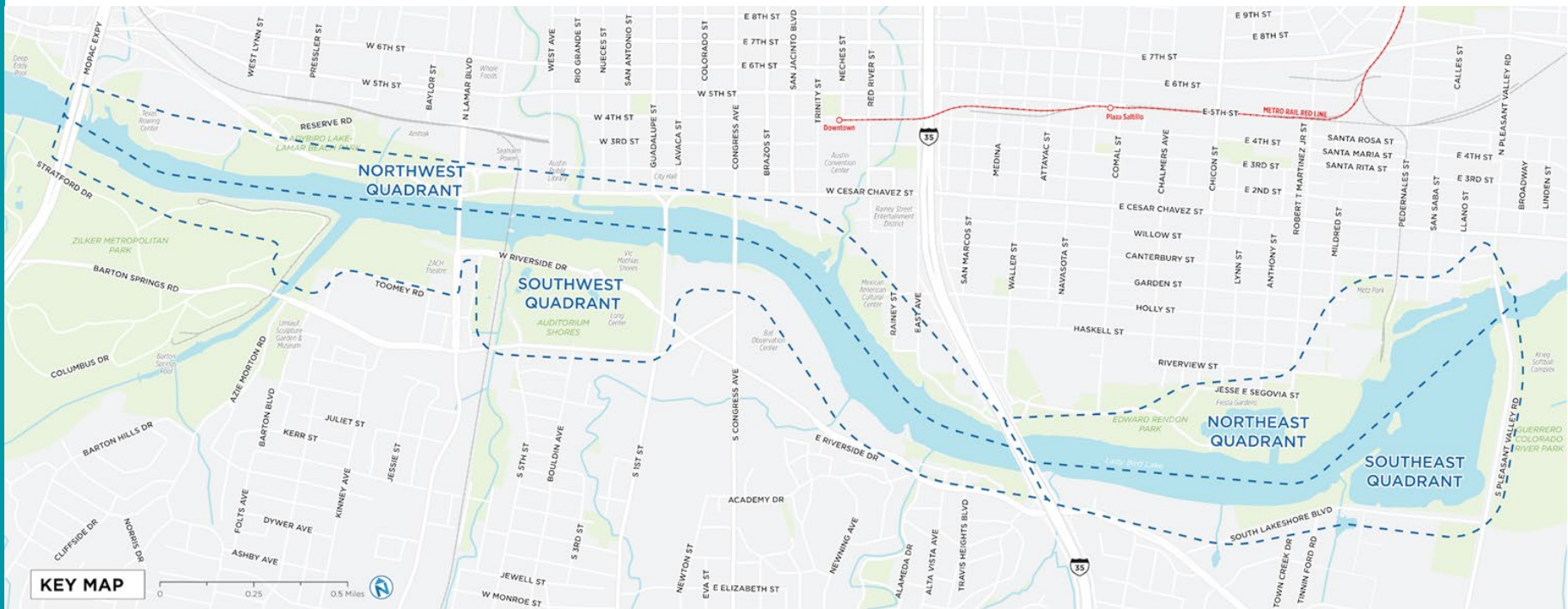
widen trail and split use



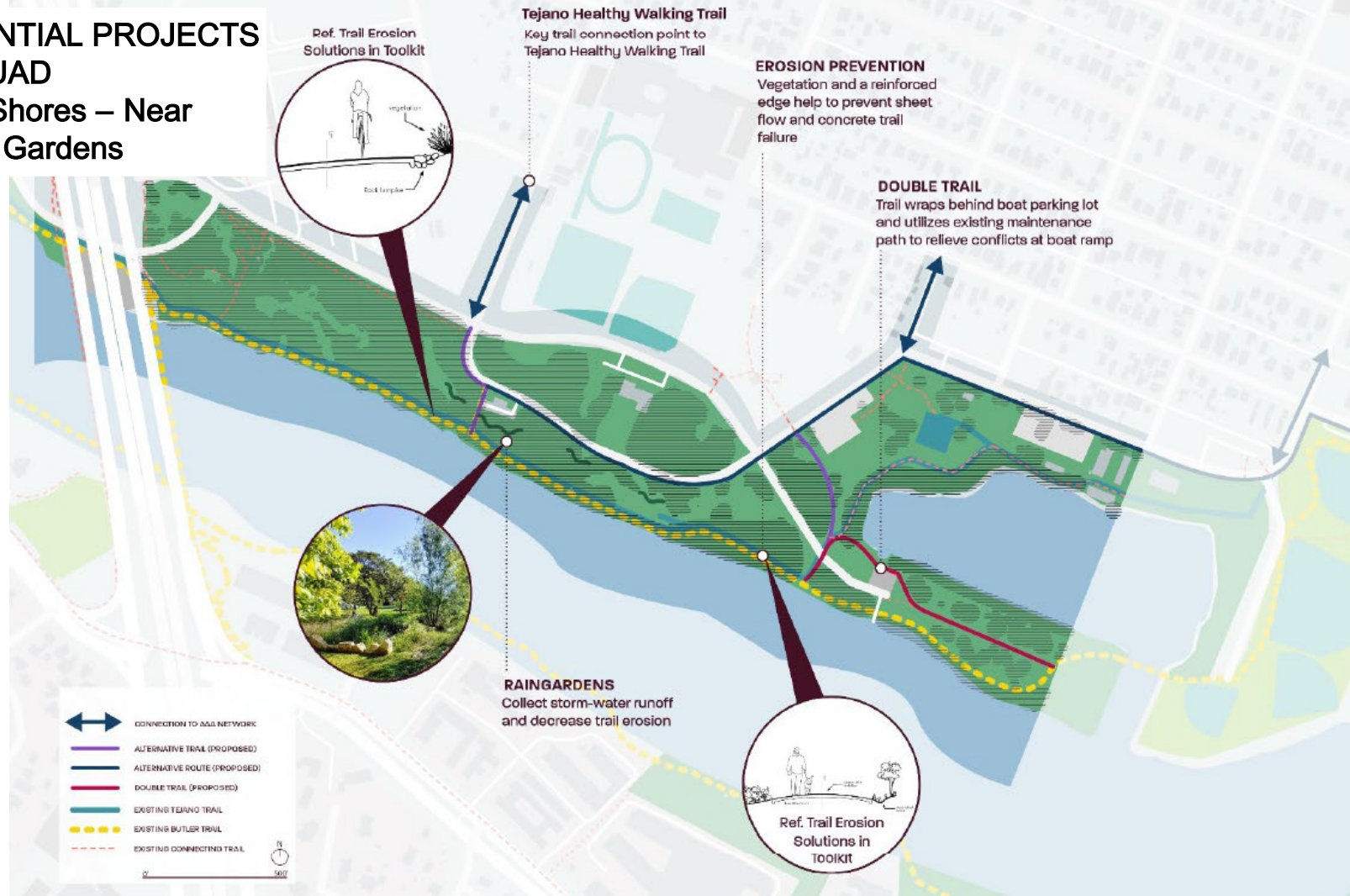
stabilize with vegetation and material



SAFETY & MOBILITY PLAN

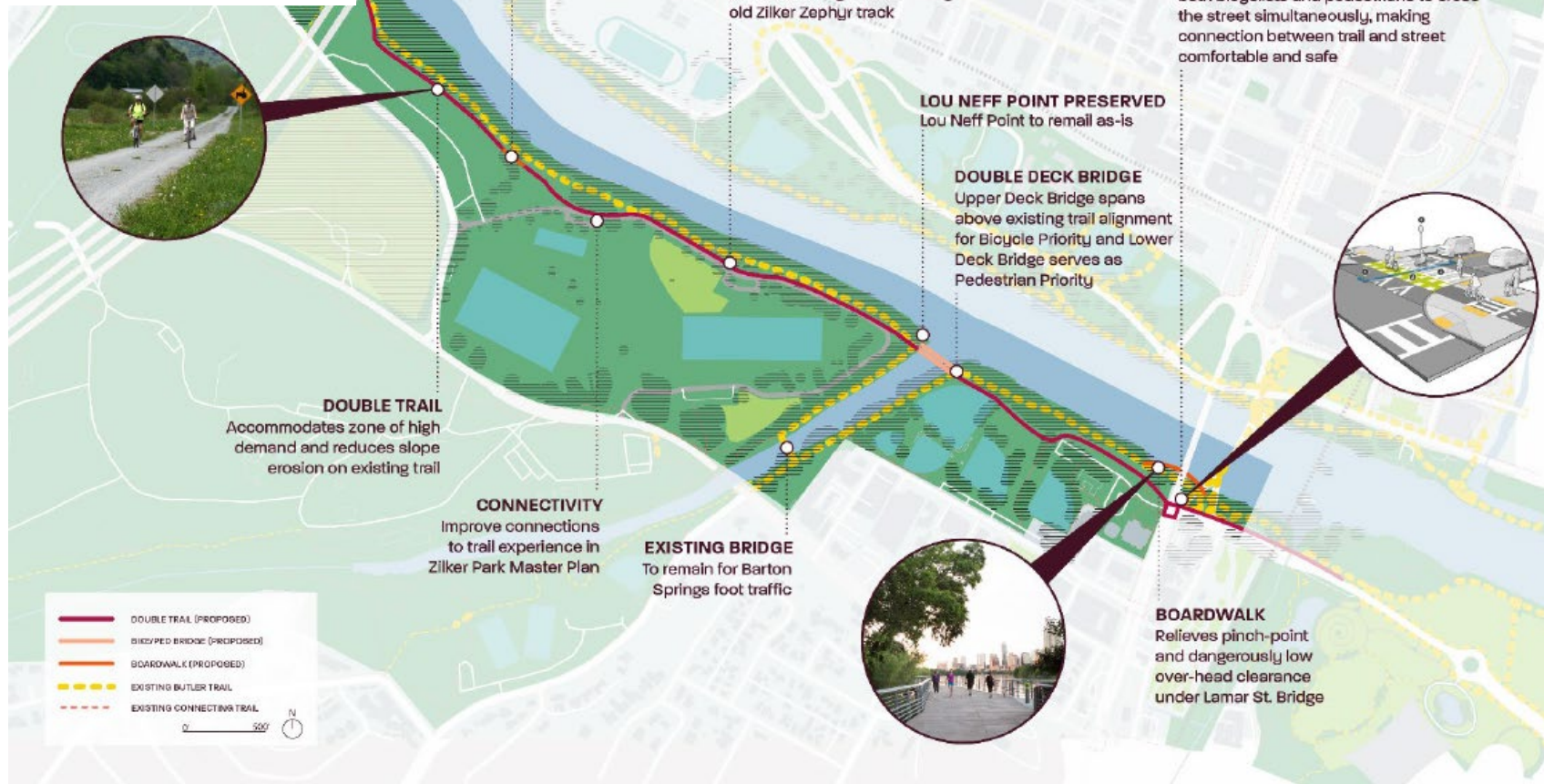


POTENTIAL PROJECTS NE QUAD Holly Shores – Near Fiesta Gardens

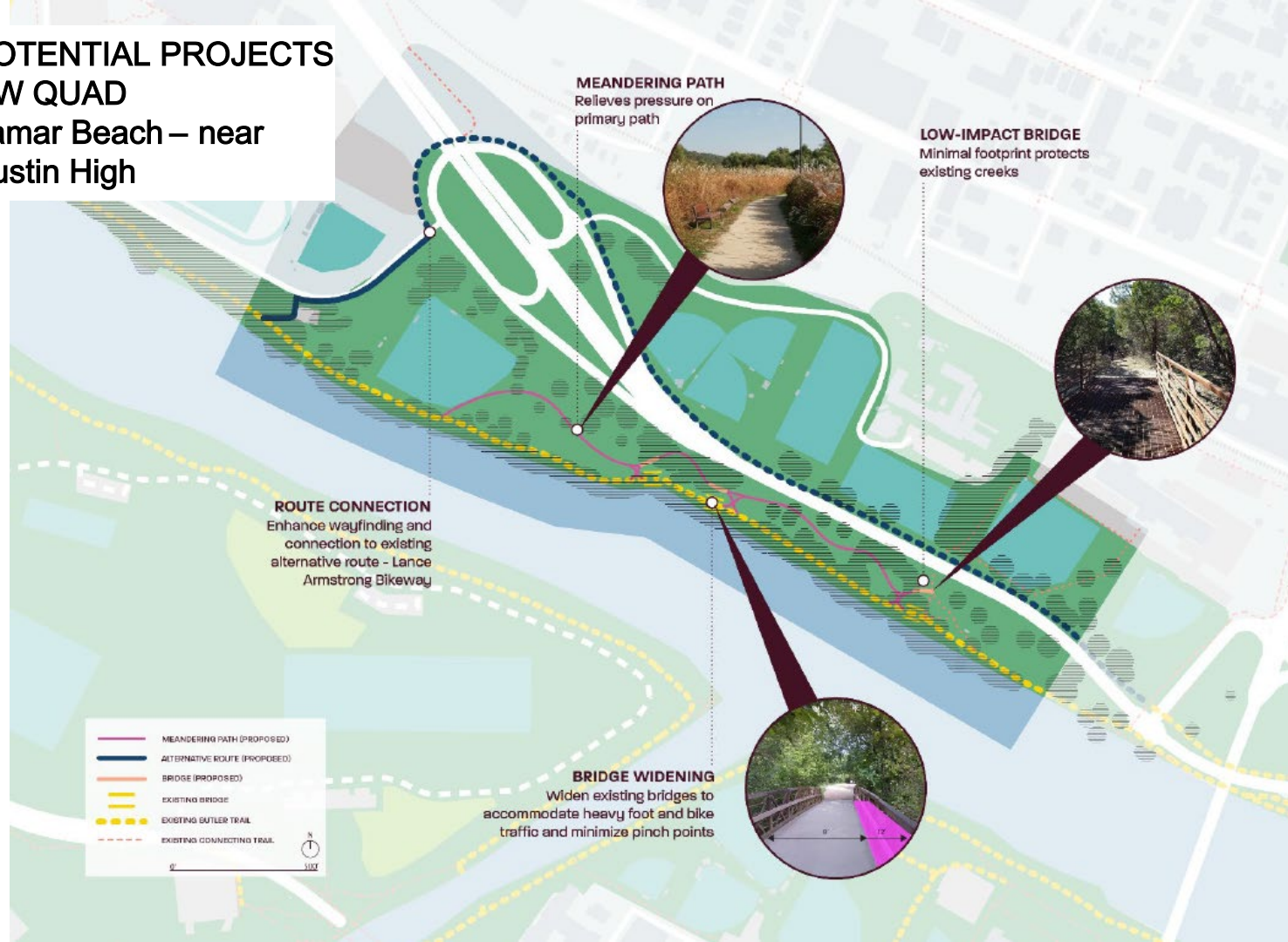




POTENTIAL PROJECTS SW QUAD Zilker Park / Barton Creek / Butler Shores



POTENTIAL PROJECTS NW QUAD Lamar Beach – near Austin High



NEXT STEPS:

Continued collaboration among The Trail Foundation, PARD, Public Works and Watershed Protection with key partners to deepen engagement and refine the scope of recommended projects in a thoughtful, balanced and ecologically supportive manner.

The Trail Foundation and PARD identify priorities for an implementation plan.

Collaborate with Watershed Protection to identify the appropriate tools and mechanisms to ensure the identified capital and maintenance projects recommended in the report are able to be implemented within the 50-foot setback of Lady Bird Lake, while restoring the shoreline and protecting and enhancing the ecology along the Trail.