

Supplemental Materials

4006 ½ Avenue B

Built: 1923



Small addition to rear of house was added around 1991

Proposed addition



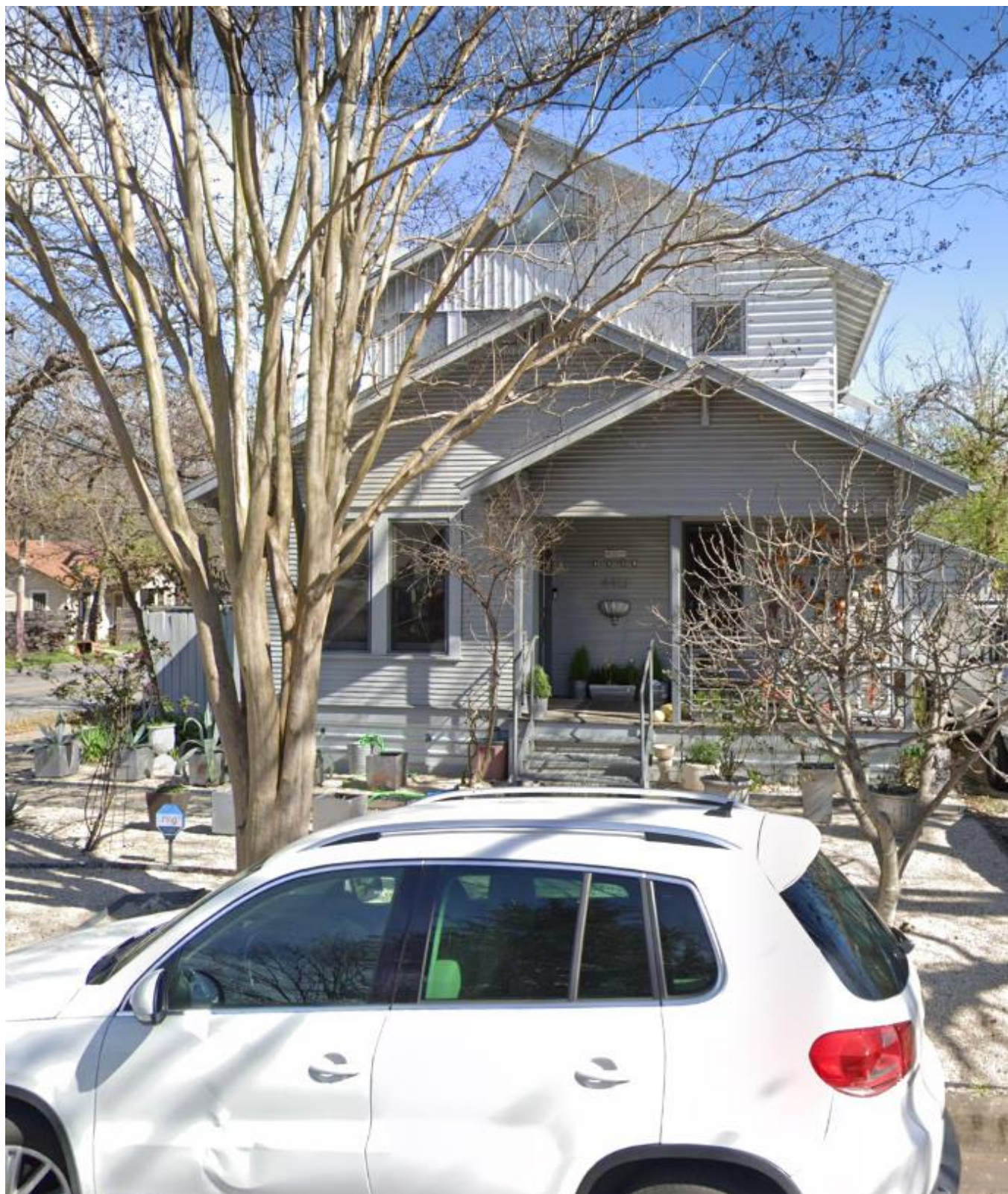
Non-original aluminum frame windows to be replaced with new windows more closely resembling originals.

Addition will match original lap siding.

4413 Avenue C

Built: 1927

Second floor added in 2011



4113 Avenue D

Built: 1932

Second floor added in 2019



4303 Speedway

Built: 1920

Added second floor in 2010



4103 Avenue A

Built: 1924

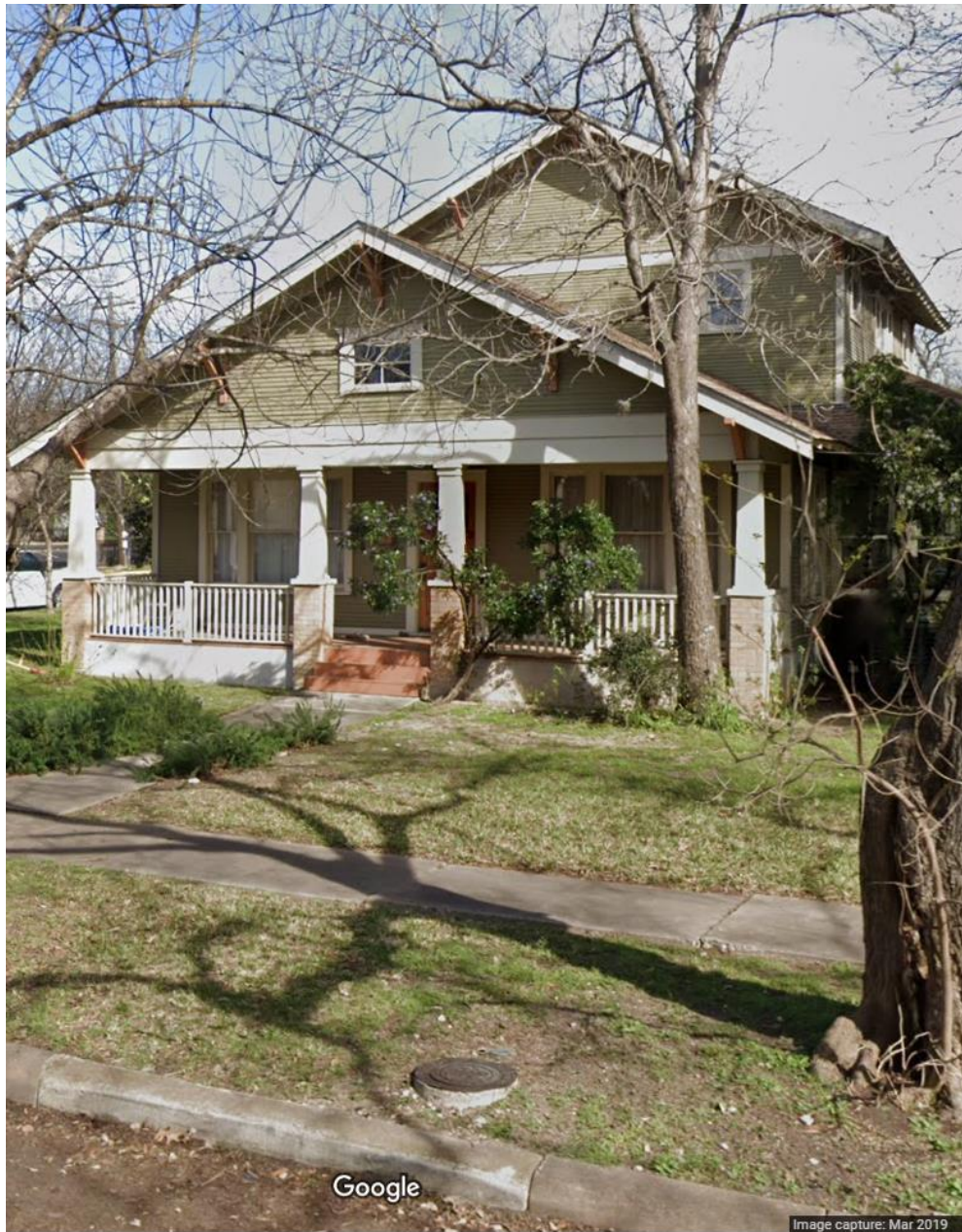
Second floor added in 2003



3913 Avenue F

Built: 1906

Second floor added in 2008



4207 Avenue H

Built: 1925

Second floor added in 2017

