

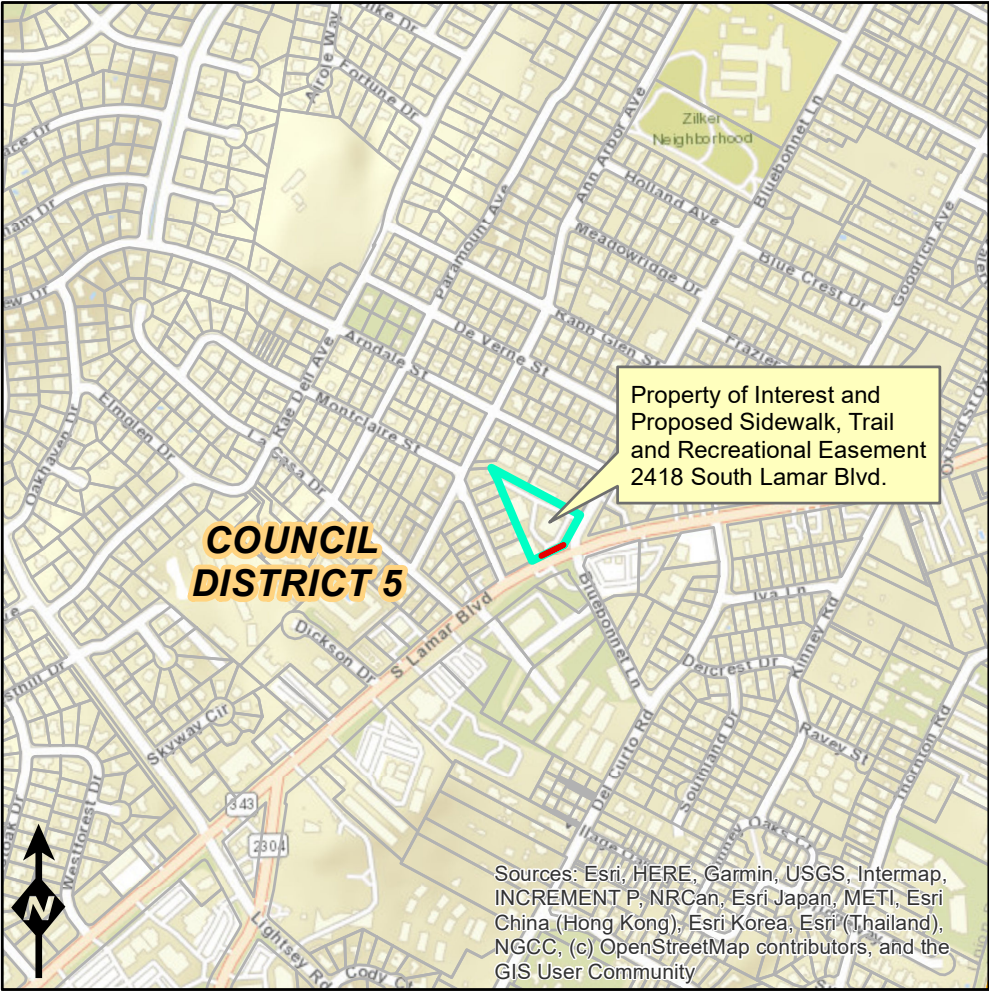
# Proposed Easement Located At 2418 South Lamar Blvd.

- Property of Interest
- Proposed Sidewalk, Trail and Recreational Easement (STARE)
- City Council Districts
- TCAD Parcels

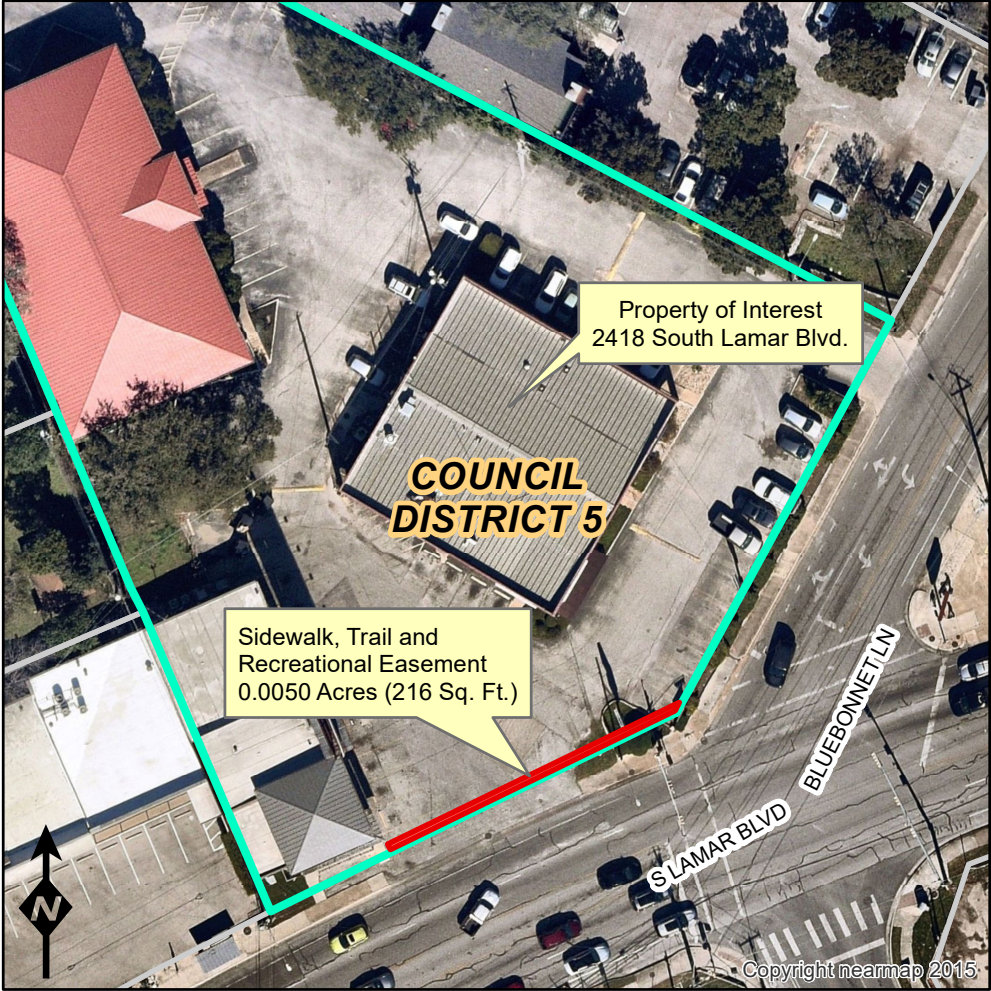
This product is for informational purposes and has not been prepared for or considered to be suitable for legal, engineering, or surveying purposes. It does not represent an on-the-ground survey and represents only the approximate relative location of property boundaries.

This product has been produced by the Corridor Mobility Program for the sole purpose of geographic reference. No warranty is made by the City of Austin regarding specific accuracy or completeness.

Produced by H. W. Lindsley, 4/20/2021



0 1,000 2,000 Feet



0 50 100 Feet