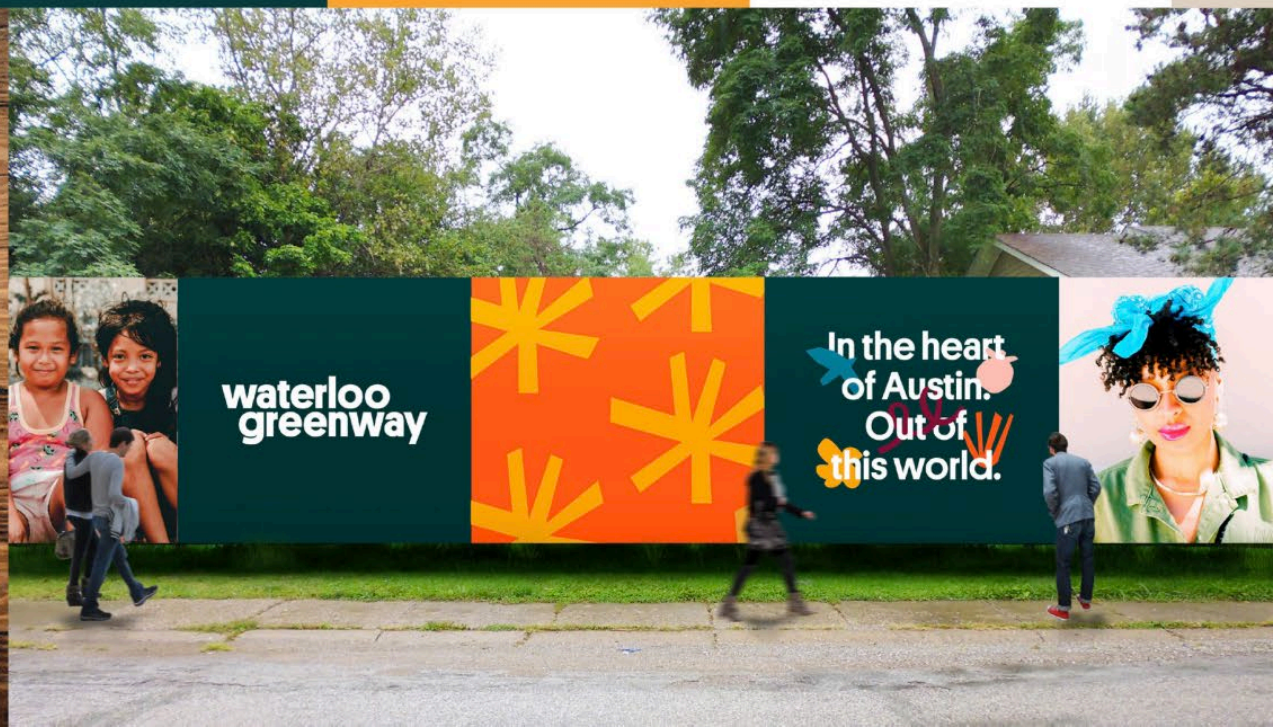


# waterloo greenway

w  
g



# waterloo greenway

**Creek Delta Construction Update and  
ESB-MACC Phase II Master Plan Coordination**

# waterloo greenway



**w  
g**



# Mission

Waterloo Greenway Conservancy creates and maintains an extraordinary urban park system and a restored Waller Creek, in partnership with the City of Austin, **for the benefit of all**. The Conservancy renews the natural environment, promotes play, health and wellness, economic vitality and mobility, and engages the community through outreach, education, cultural events, and the arts.





Texas Capitol

Frank C. Erwin, Jr.  
Special Events Center

SAN JACINTO BLVD

TRINITY ST

NECHES ST

RED RIVER ST

SABINE ST

Austin Convention Center

Red River Cultural District

Dei Seton  
Medical Center

Dei Medical School  
at the University of Texas

Central Health Brackenridge  
Redevelopment Site

Frank C. Erwin, Jr.  
Special Events Center

Lady Bird Lake

Emma S. Barrientos  
Mexican American  
Cultural Center

RAINEY ST

DAVIS ST

DRISKILL ST

CSAR CHAVEZ ST

2ND ST

3RD ST

4TH ST

5TH ST

6TH ST

7TH ST

8TH ST

9TH ST

10TH ST

11TH ST

12TH ST

13TH ST

14TH ST

15TH ST

Palm  
School

IH-35

W  
9



# Waterloo Greenway

A Restored Creek





Texas Capitol

Frank C. Erwin, Jr.  
Special Events Center

SAN JACINTO BLVD

2ND ST

3RD ST

4TH ST

5TH ST

6TH ST

7TH ST

8TH ST

9TH ST

10TH ST

11TH ST

12TH ST

13TH ST

14TH ST

15TH ST

CEASAR CHAVEZ ST

Austin Convention Center

TRINITY ST

NECHES ST

Red River Cultural District

RED RIVER ST

SABINE ST

Emma S. Berrientos  
Mexican American  
Cultural Center

RAINEY ST

DAVIS ST

DRISKILL ST

Palm  
School

Dell Seton  
Medical Center

Dell Medical School  
at the University of Texas

Central Health Brackenridge  
Redevelopment Site

Frank C. Erwin, Jr.  
Special Events Center

IH-35

W  
9



# Waterloo Greenway

New Connectivity





Texas Capitol

Frank C. Erwin, Jr.  
Social Events Center

Pantoon  
Bridge

Lady Bird Lake

Creek  
Delta

Emma S. Barrientos  
Mexican American  
Cultural Center

RAINEY ST

DAVIS ST

DRISKILL ST

CESAR CHAVEZ ST

2ND ST

3RD ST

4TH ST

SAN JACINTO BLVD

5TH ST

6TH ST

7TH ST

8TH ST

9TH ST

10TH ST

11TH ST

12TH ST

15TH ST

Austin Convention Center

TRINITY ST

NECHES ST

RED RIVER ST

SABINE ST

Red River Cultural District

IH-35

Palm  
School

Palm  
Park

The  
Refuge

Symphony  
Square

Moody  
Amphitheater

Waterloo  
Park

Dell Seton  
Medical Center

Dell Medical School  
at the University of Texas

Central Health Brackenridge  
Redevelopment Site

Frank C. Erwin, Jr.  
Special Events Center

w  
g

# Waterloo Greenway

- Phase 1
- Phase 2
- Phase 3





















Texas Capitol

Prank C. Brink, Jr.  
Soviet Tower East

SAN JACINTO BLVD

Moody Amphitheater

Pontoon Bridge

Lady Bird Lake

Emma S. Barrientos  
Mexican American  
Cultural Center

Creek Delta

Austin Convention Center

TRINITY ST

NECHES ST

Red River Cultural District

RED RIVER ST

Waterloo Park

Dell Seton  
Medical Center

Dell Medical School  
at the University of Texas

Central Health Breckenridge  
Redevelopment Site

Frank C. Erwin, Jr.  
Special Events Center

RAINEY ST

DAVIS ST

DISKILL ST

Palm School

Palm Park

SABINE ST

The Refuge

IH-35

Symphony Square

w  
g

# Waterloo Greenway

Phase 1 Phase 2 Phase 3













## COORDINATION PLANNING



Area of project  
overlap\*

\*Will require  
coordination with  
ESB-MACC Staff,  
Board, and Master  
Plan





## OUTREACH OVERVIEW

- **Feb 2018** – Waller Creek public meetings at MACC
- **June 2018** – School field trip collaboration: Waller Creek/MACC
- **Aug 2018** – Tabling at trail: Waller Creek/MACC
- **Feb 2019** – Tabling at Austin Energy meeting at MACC
- **Summer 2019** – Presentation at Rainey neighborhood meeting at MACC
- **Sept 2019** – Tabling at MACC “¡Viva México!” event
- **Sept 2019** – Presentation at HQOL Commission
- **Oct 2019** – Presentation at District 9 Rainey Street Historic District Visioning Meeting
- **Nov 2019** – Tabling at MACC “Día de Los Muertos” event
- **March 2020** – MACC Advisory Board meeting presentation





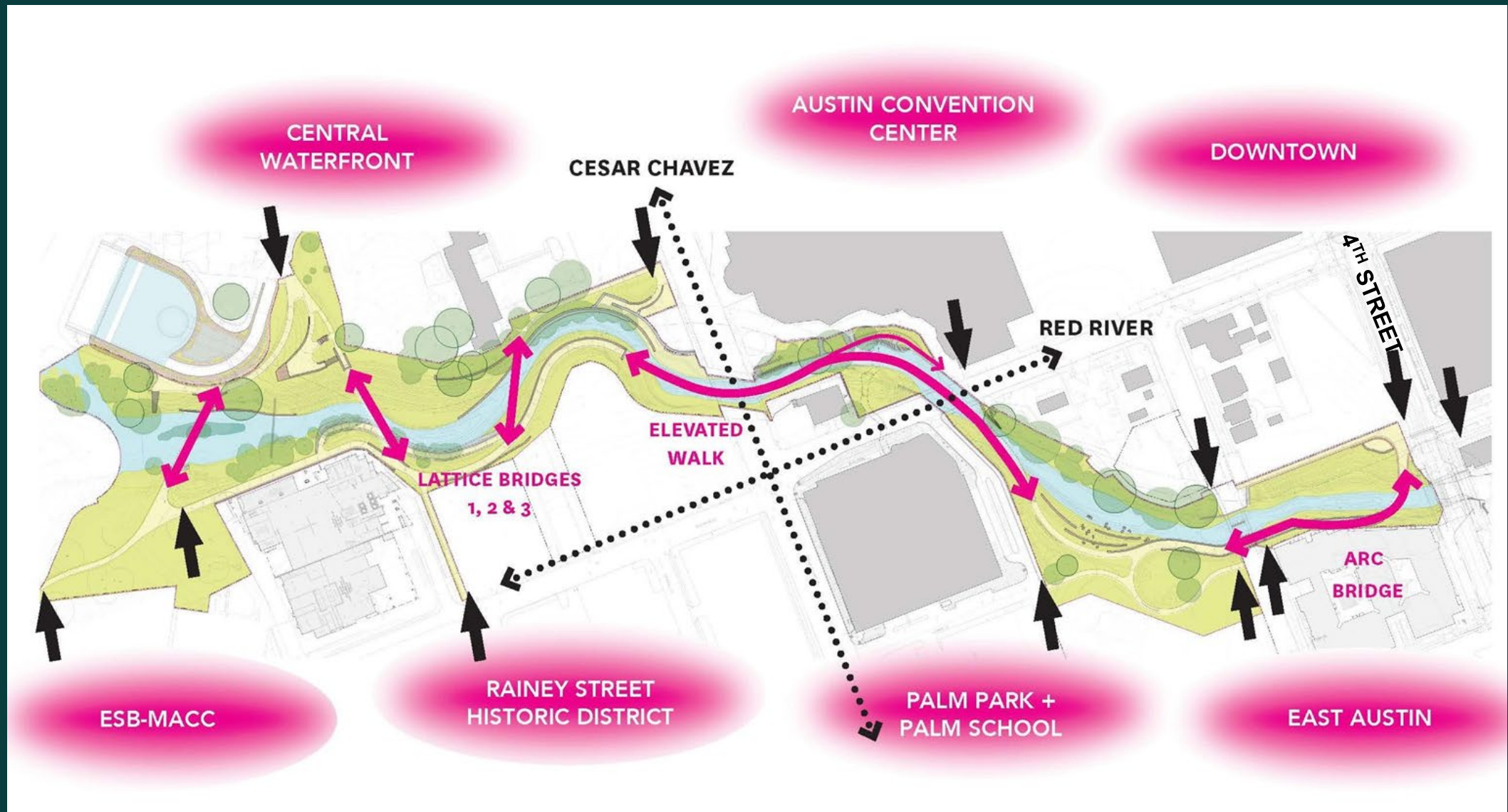
**Creek Delta Objective: Reconstruct eroded banks**





**Creek Delta Objective: Reconstruct eroded banks**





Creek Delta Objective: Connectivity with new and existing sites



# ESB-MACC Site Plan Phase II

Lady Bird Lake

Waller Creek

Ann and Roy Butler Hike and Bike Trail

Outdoor  
Temporary  
Exhibit Space

Community  
Garden

Orchard

Lawn

Shade  
Structures

Cafe  
Seating

Fire  
Lane

Water  
Quality

Drop-off

Rain  
Gardens

Pedestrian  
Crossing



RAINEY ST.

B-Cycle  
Dock

RIVER ST.

Entry  
Sign

Mural Wall

Public Art

Seat Wall

Plaza Garden

## SITE PLAN LEGEND

- 1 = Gran Entrada
- 2 = Paseo
- 3 = Zócalo
- 4 = Las Ventanas
- 5 = El Muelle
- 6 = Creekside Amphitheatre



asakura  
robinson

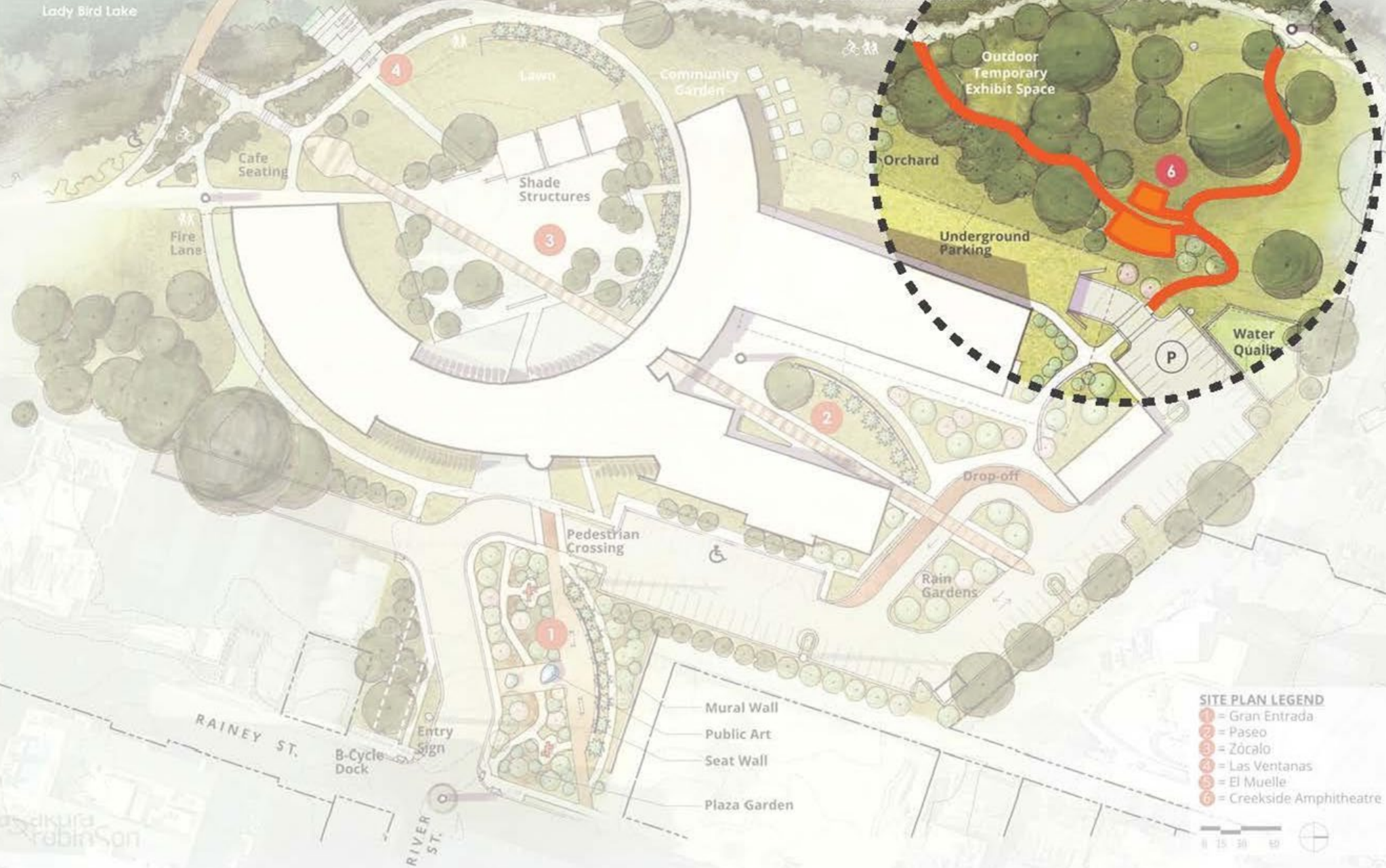


# ESB-MACC Site Plan Phase III

Lady Bird Lake

Ann and Roy Butler Hike and Bike Trail

Miller Creek



## SITE PLAN LEGEND

- 1 = Gran Entrada
- 2 = Paseo
- 3 = Zócalo
- 4 = Las Ventanas
- 5 = El Muelle
- 6 = Creekside Amphitheatre

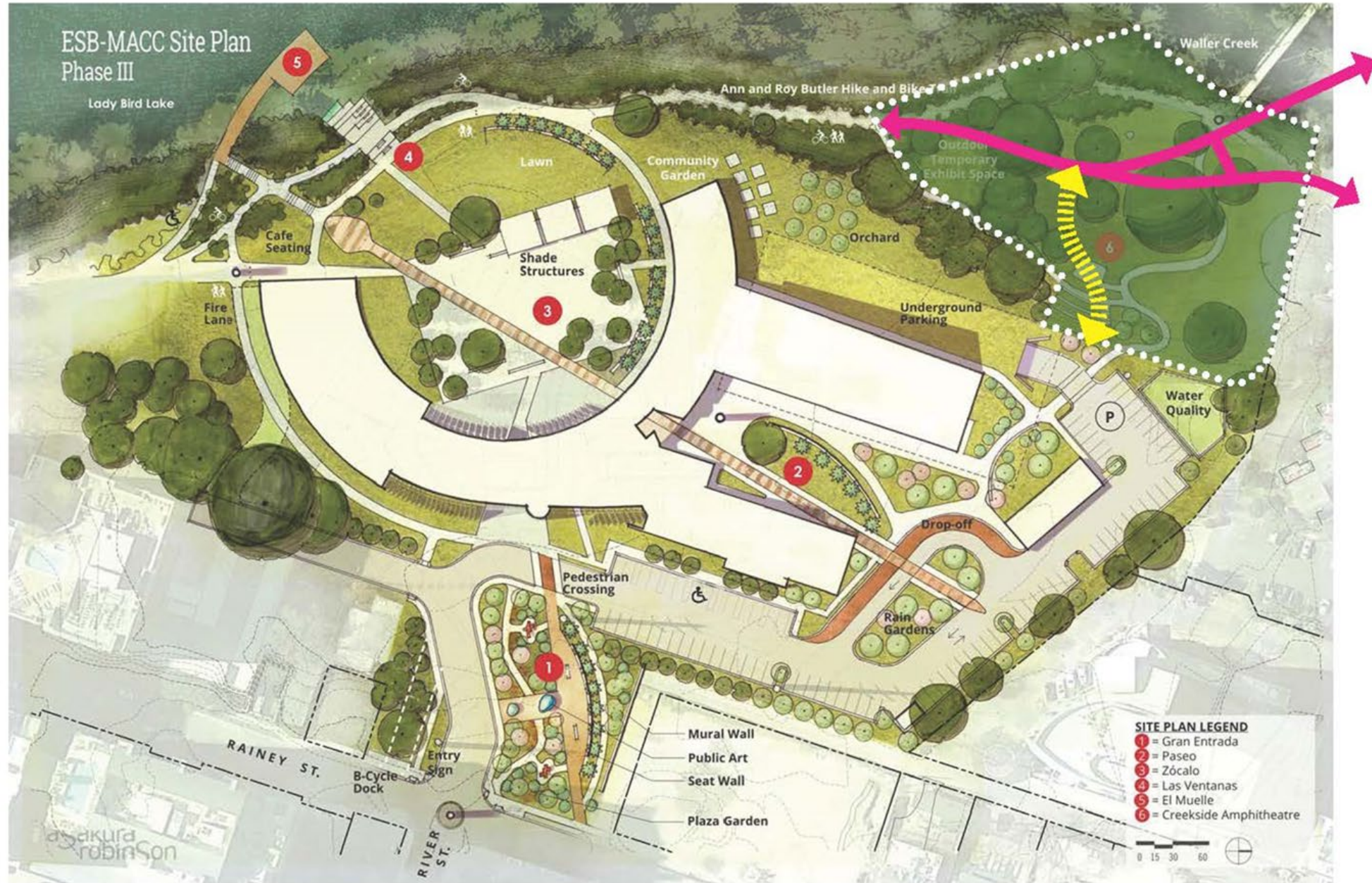








# MACC Master Plan - Creek Delta Coordination







## CREEK DELTA PROJECT TIMELINE OVERVIEW

- Currently in 90% design phase
- Bidding: summer 2021
- Construction: end of 2021
- 2-3 year duration





## COORDINATION PLANNING (ONGOING)

- Design briefings with ESB-MACC staff
- Presentation to MACC Phase II Working Group
- Trail connection identified as area for Waterloo Greenway design & construction opportunity
- Future coordination envisioned between Waterloo Greenway & ESB-MACC design teams



# THANK YOU!

Waterloo Greenway

Melissa Ayala: [mayala@waterloogreenway.org](mailto:mayala@waterloogreenway.org)

Parks & Recreation

Lana Denkeler: [lane.denkeler@austintexas.gov](mailto:lane.denkeler@austintexas.gov)

Watershed Protection

Diana Wang: [diana.wang@austintexas.gov](mailto:diana.wang@austintexas.gov)