

3800 ISLAND WAY– BOAT DOCK REPLACEMENT

SP- 2021-0021D

Eric Brown

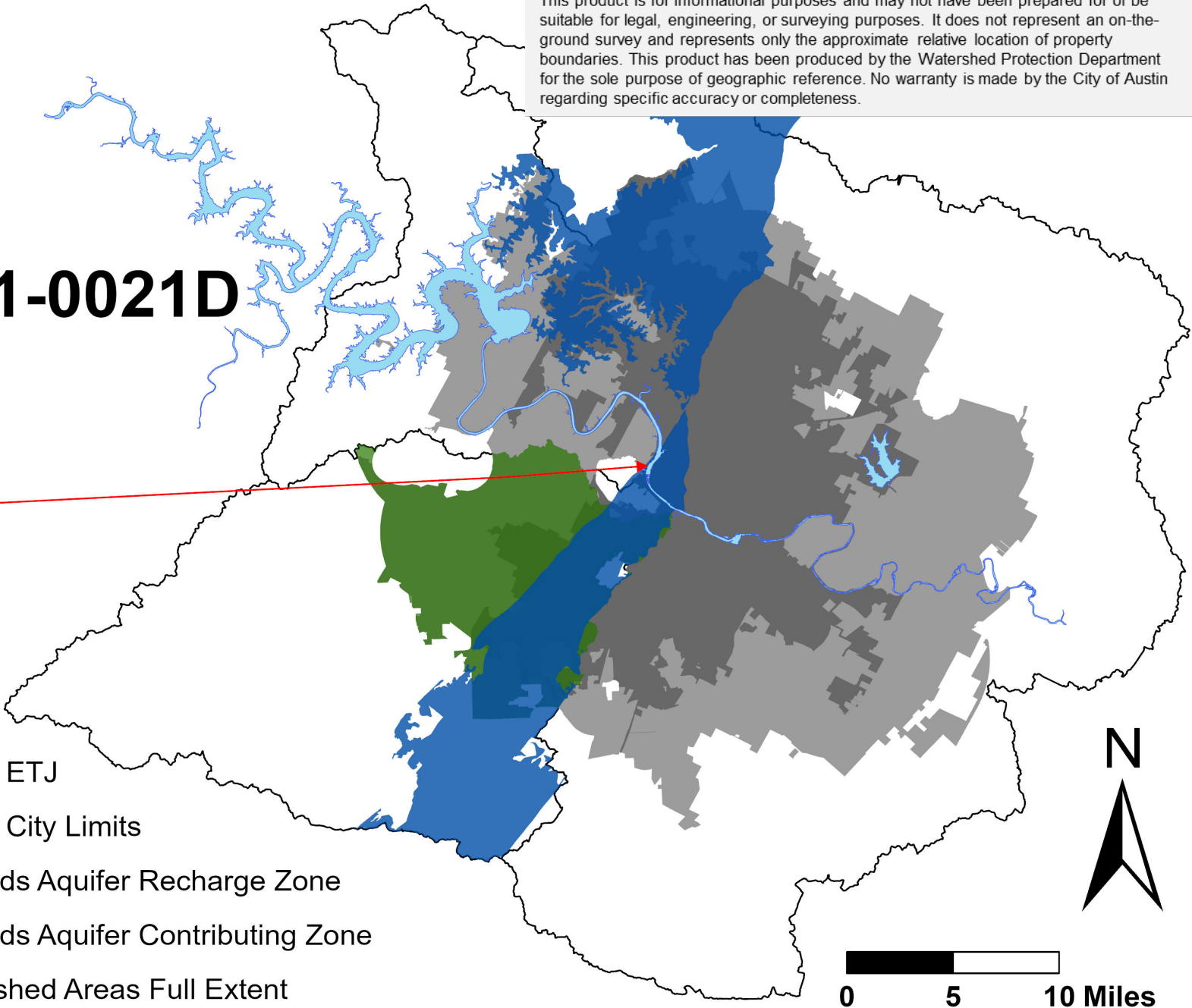
Hydrogeologic Reviewer

Watershed Protection Department

This product is for informational purposes and may not have been prepared for or be suitable for legal, engineering, or surveying purposes. It does not represent an on-the-ground survey and represents only the approximate relative location of property boundaries. This product has been produced by the Watershed Protection Department for the sole purpose of geographic reference. No warranty is made by the City of Austin regarding specific accuracy or completeness.

SP-2021-0021D

Site

- 
- The map displays the geographical context of the site. The watershed area is outlined in black. The Edwards Aquifer Recharge Zone is shown in dark blue, and the Edwards Aquifer Contributing Zone is shown in green. The Austin ETJ is shown in light gray, and the Austin City Limits are shown in dark gray. A red arrow points from the 'Site' label to a specific location within the recharge zone.
- Austin ETJ
 - Austin City Limits
 - Edwards Aquifer Recharge Zone
 - Edwards Aquifer Contributing Zone
 - Watershed Areas Full Extent



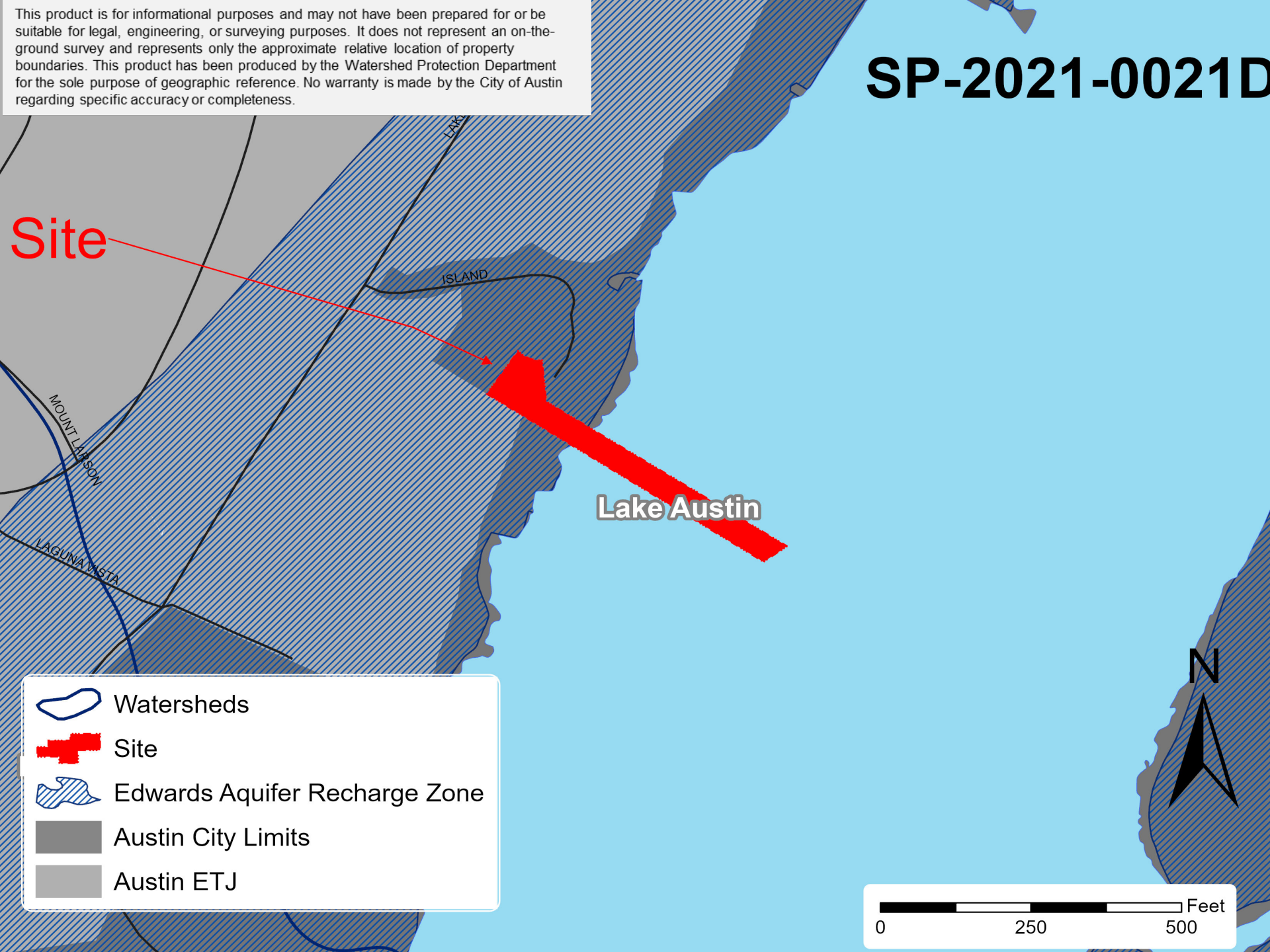
0 5 10 Miles

PROPERTY DATA

- LAKE AUSTIN WATERSHED
- WATER SUPPLY RURAL CLASSIFICATION
- CRITICAL ENVIRONMENTAL FEATURES ON SITE
- COUNCIL DISTRICT 10

This product is for informational purposes and may not have been prepared for or be suitable for legal, engineering, or surveying purposes. It does not represent an on-the-ground survey and represents only the approximate relative location of property boundaries. This product has been produced by the Watershed Protection Department for the sole purpose of geographic reference. No warranty is made by the City of Austin regarding specific accuracy or completeness.

SP-2021-0021D



Site

ISLAND

Lake Austin

MOUNT LARSON

LAGUNA VISTA



Watersheds



Site



Edwards Aquifer Recharge Zone

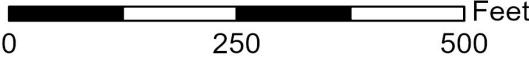
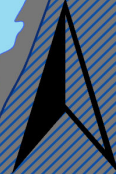


Austin City Limits



Austin ETJ

N





Site



Rimrock(s)



Wetlands



This product is for informational purposes and may not have been prepared for or be suitable for legal, engineering, or surveying purposes. It does not represent an on-the-ground survey and represents only the approximate relative location of property boundaries. This product has been produced by the Watershed Protection Department for the sole purpose of geographic reference. No warranty is made by the City of Austin regarding specific accuracy or completeness.

BACKGROUND

- BOAT DOCK ON THE LAKE
- NEAR RIMROCK
- BRINGING EXISTING NON-COMPLIANT DOCK INTO COMPLIANCE
- ADDING SECOND STORY

CODE REFERENCE

- TITLE 25 – LAND DEVELOPMENT CODE,
CHAPTER 25-8-281(C)(2)(B).

VARIANCE REQUEST

REQUEST TO VARY FROM LDC 25-8-
281(C)(2)(B) TO ALLOW CONSTRUCTION
WITHIN 150-FOOT OF CRITICAL
ENVIRONMENTAL FEATURE (CEF) BUFFERS.



Rimrock CEF



VARIANCE RECOMMENDATION

FINDING OF FACTS HAVE BEEN MET.

STAFF RECOMMENDS THE APPROVAL OF THIS
VARIANCE WITH THE CONDITION THAT ALL
CONSTRUCTION BE COMPLETED BY BARGE.

QUESTIONS?

