

4006 ½ Avenue B Addition

Materials for Historic Landmark Commission
6/28/2021



Plans updated

Architectural Review Committee feedback has been implemented

Dormers removed

Roof pitch reduced to minimize visual impact

Decorative features to remain on original structure only

Street view



Existing



Proposed

Oblique View



Existing



Proposed

*Next house on North side is >50 feet away

Initial design proposal



Design modifications

Original submission



Current design



Changes from initial submission: 1) Dormers removed, 2) Second floor reduced by setback, 3) addition roof pitch reduced resulting in approximately 2.5 feet peak height reduction

Proposed Design

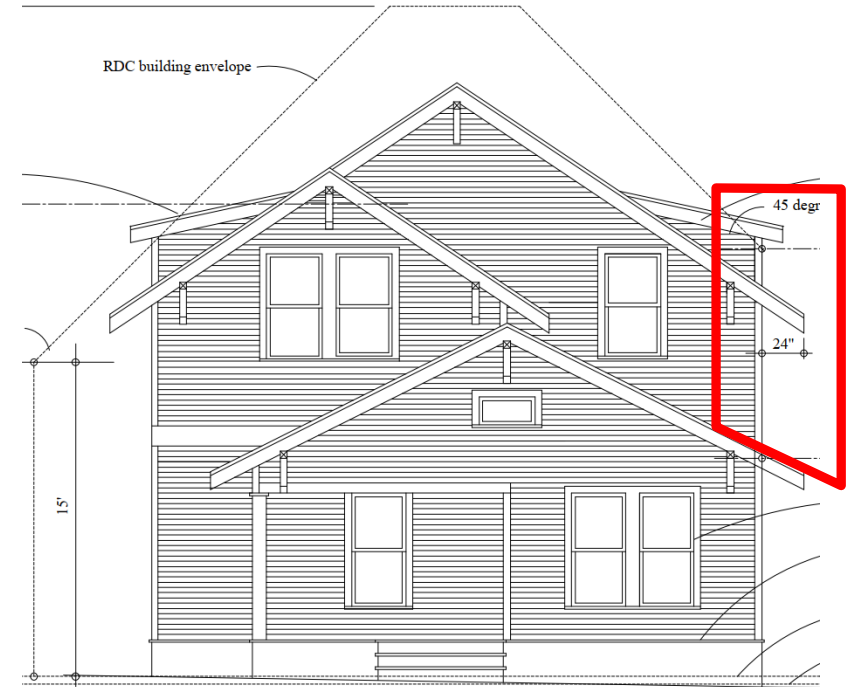


Elevation updates



Proposed

Dormers removed
Second floor reduced (zoning)
Roof pitch reduced (2.5' height reduction)



Original submission