



DELINEATE studio
ARCHITECTURE - URBAN DESIGN

2607 McCallum Drive
NRHD Review
Certificate of Appropriateness- New Construction

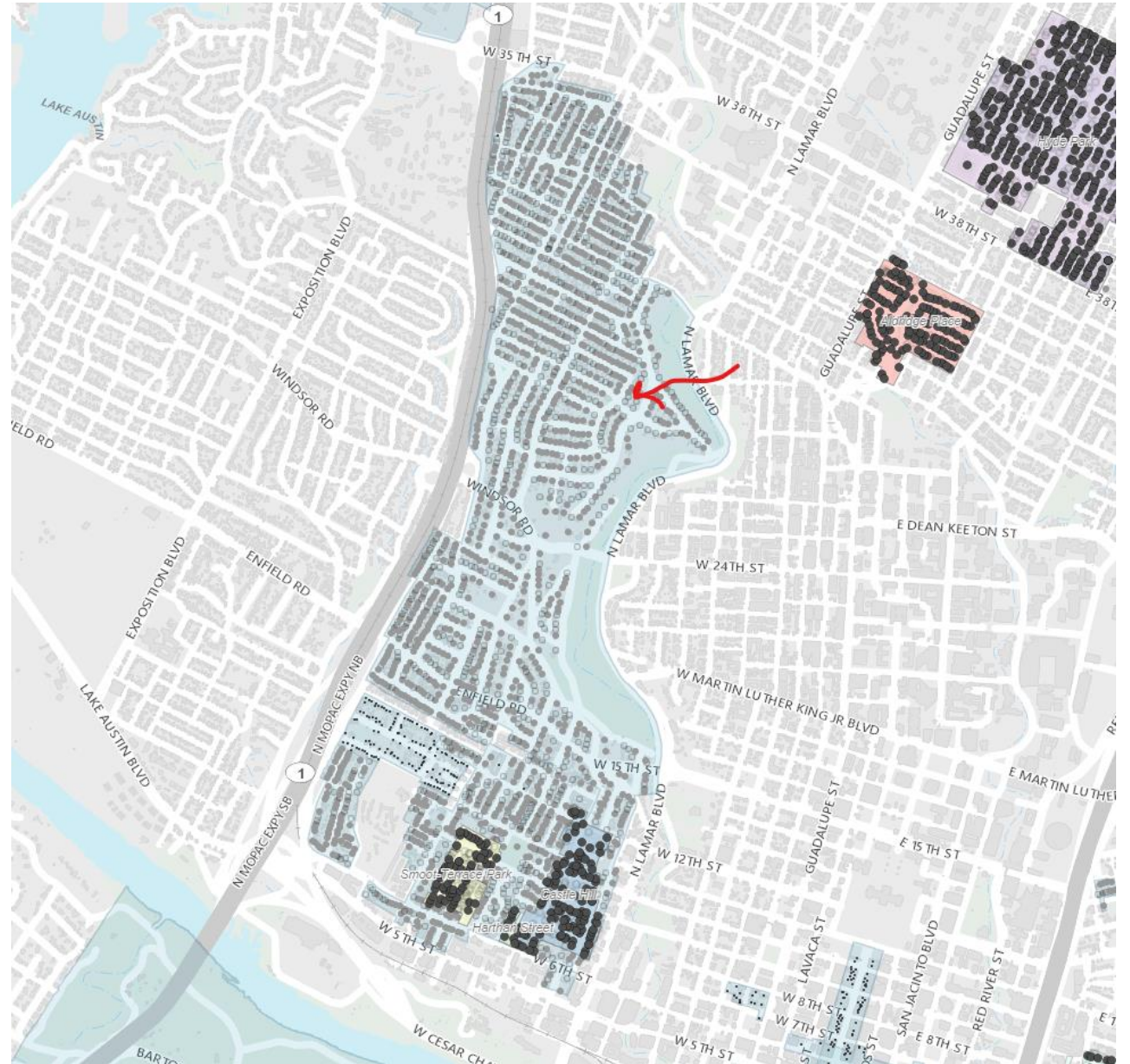
7/12/21

.

Address: 2607 McCallum Dr.
Year built: 1945

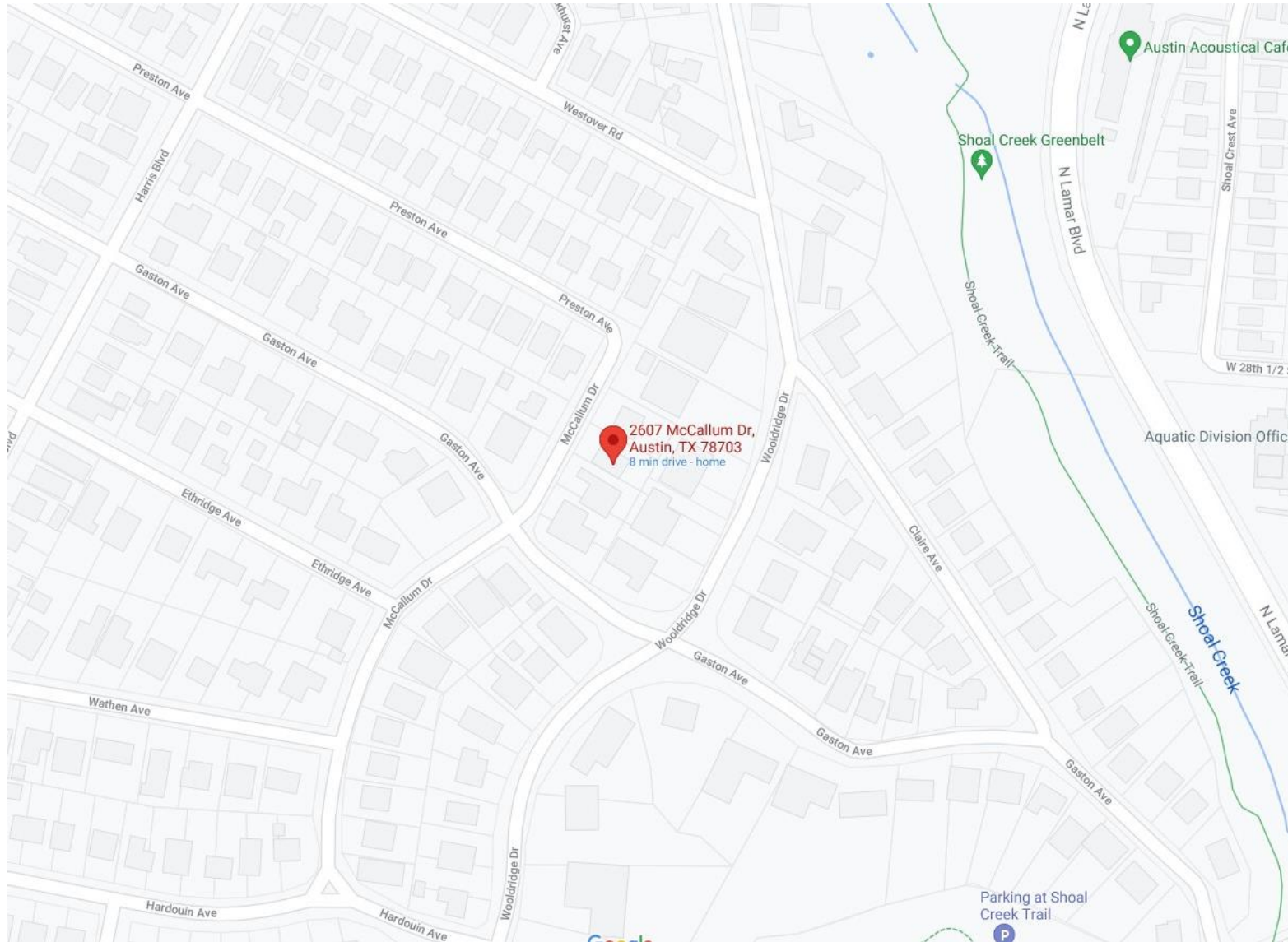
Status: Demolition approved. Contributing to the Old West Austin NRHD.

Residence style: Neo-Traditional with Craftsman/Prairie Influences



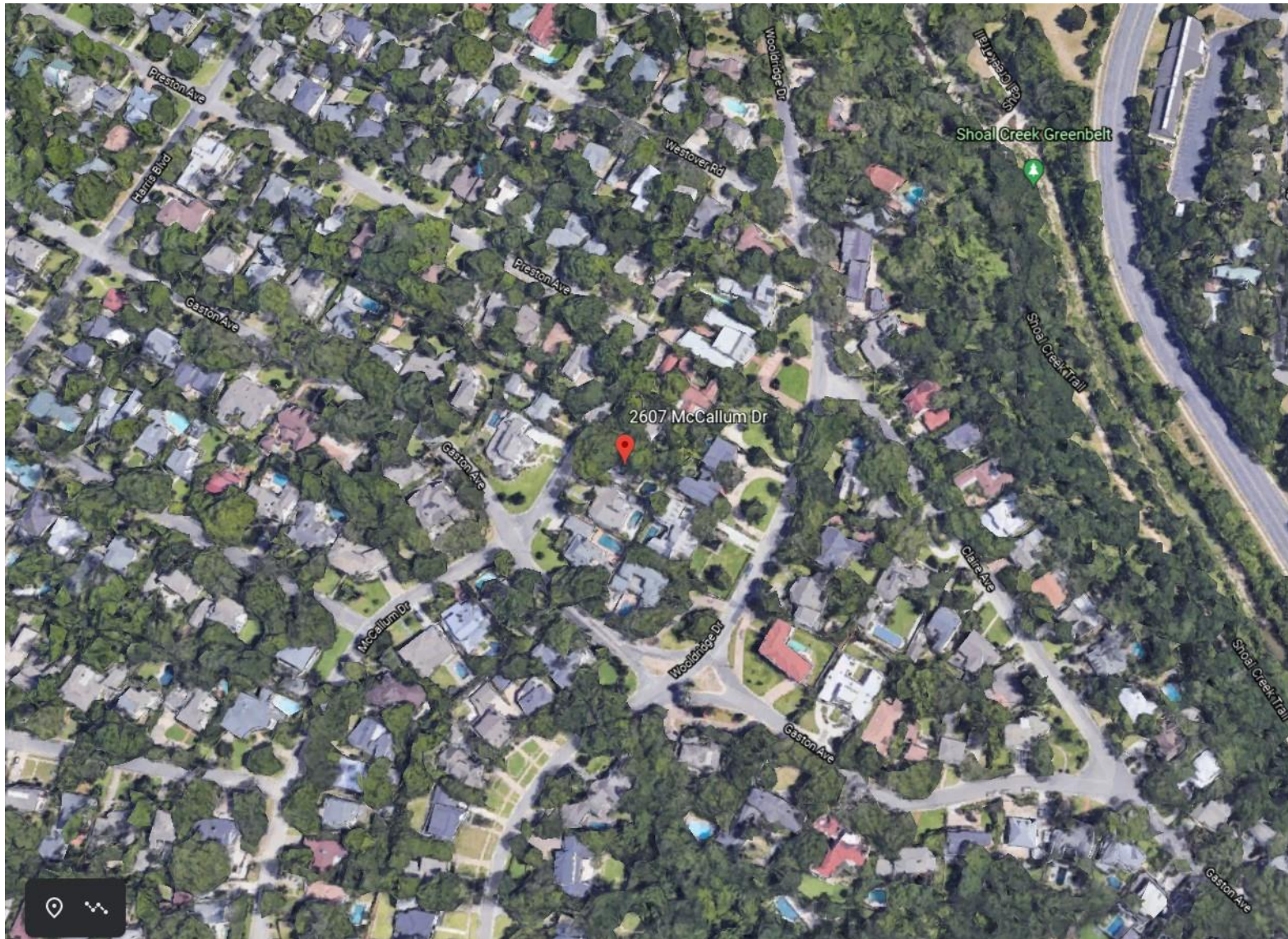
Location- Old West Austin National Register Historic District

2607 McCallum



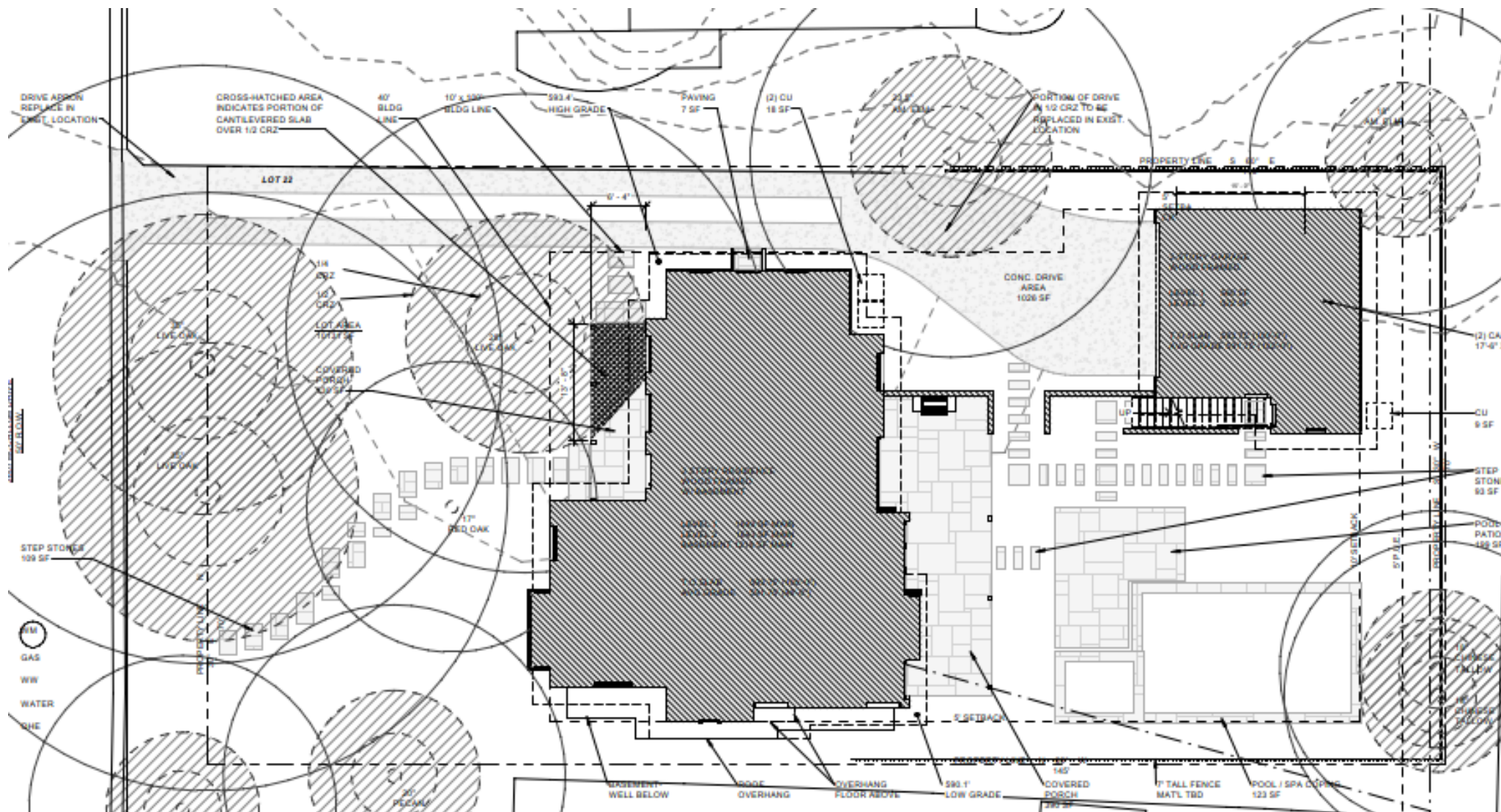
Location- Old West Austin National Register Historic District

2607 McCallum



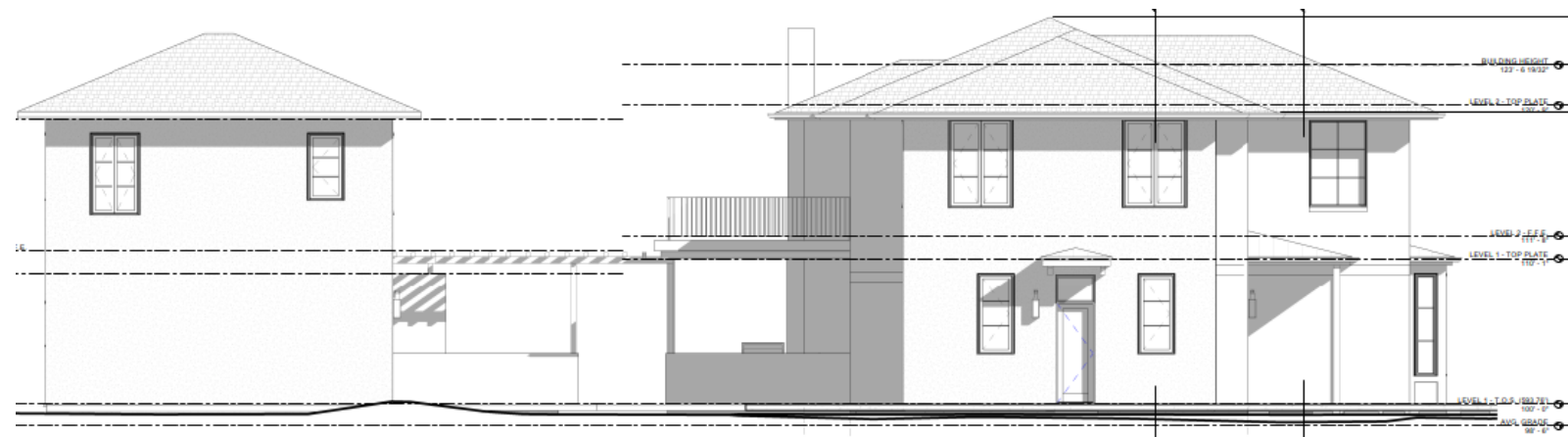
Location- Old West Austin National Register Historic District

2607 McCallum



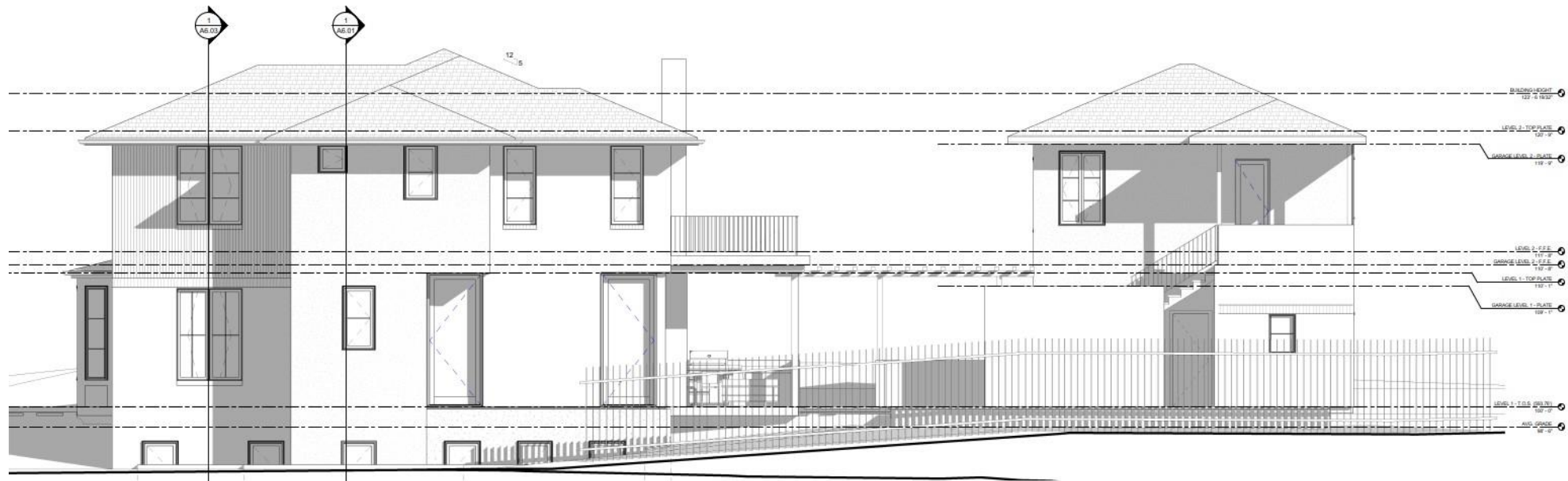
Site Plan

2607 McCallum

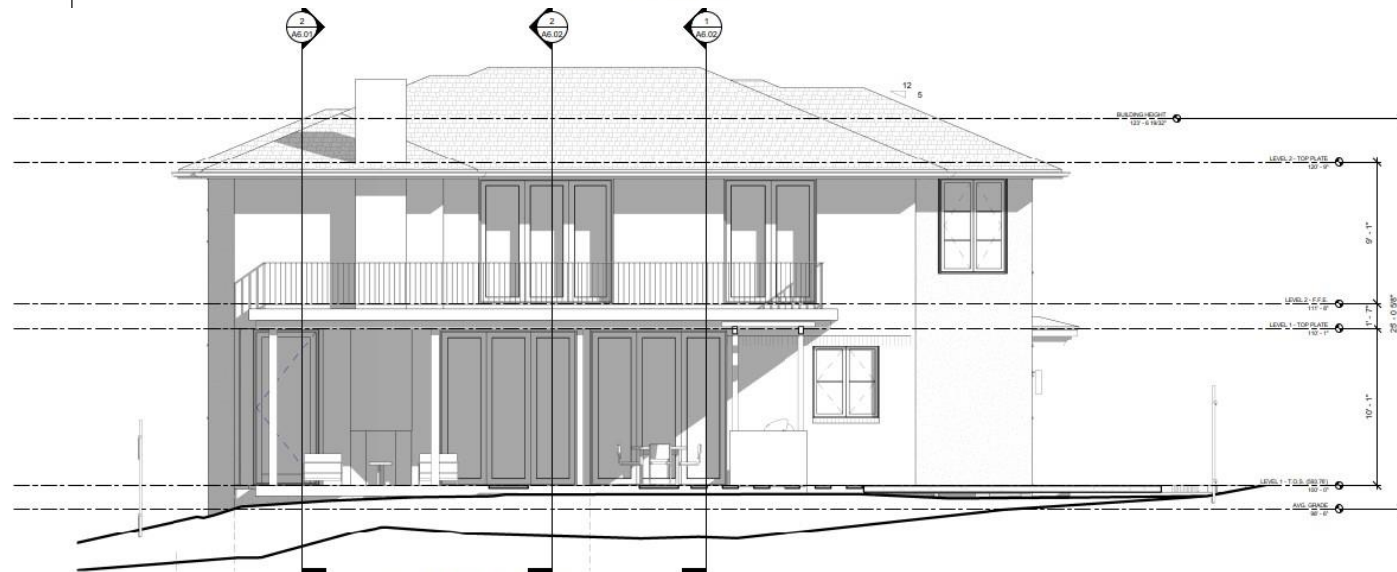


Exterior Elevations

2607 McCallum



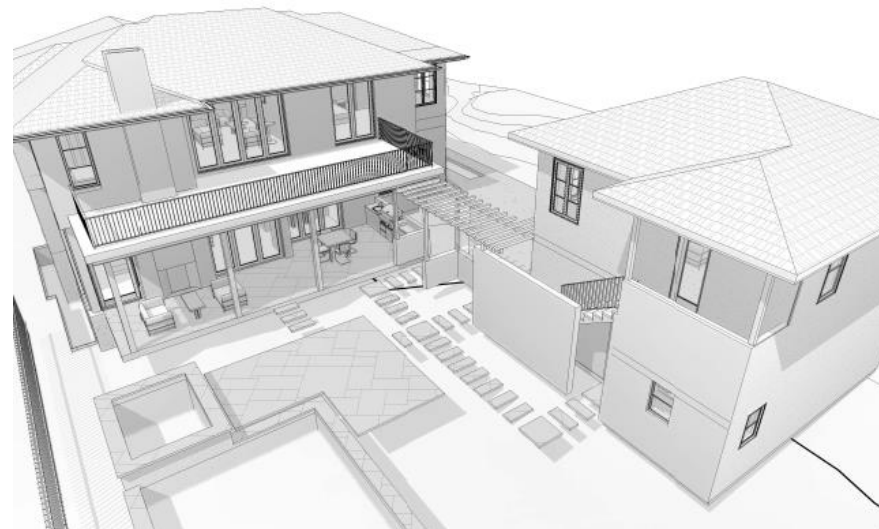
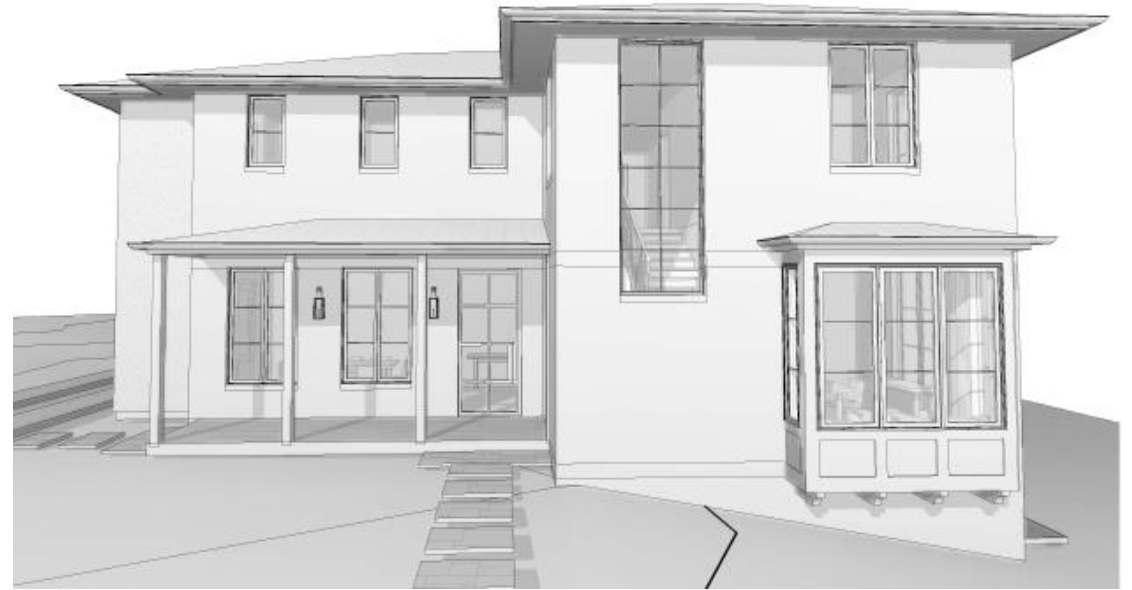
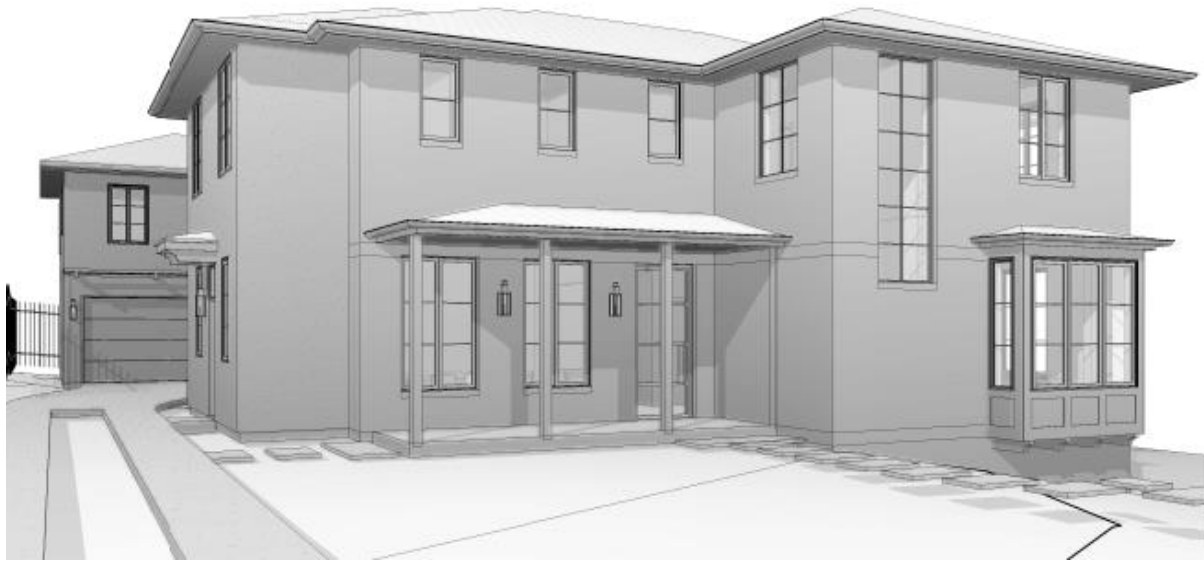
1 SOUTH ELEVATION
1/4" = 1'-0"



2 EAST ELEVATION
1/4" = 1'-0"

Exterior Elevations

2607 McCallum



Model Views
2607 McCallum



A: 1406 Hardouin Ave.



B: 1402 Preston



C: 2516 HARRIS



HISTORIC DESIGN STANDARDS MET

(NRHD properties are recommended to meet City of Austin Historic Design Standards)

1. In general, the new design focused on maintaining the scale of original homes in the district. The standards state, “The scale and massing of a new building are essential to maintaining a property or historic district’s distinctive character—more so than architectural style or decorative details. However, well-designed.”
2. LOCATION. The structure is located in line with other houses so that it does not visually overpower existing adjacent houses.
3. ORIENTATION. The orientation (front door faces street) is consistent with adjacent contributing structures.
4. SCALE. Massing of house reflects character of nearby contributing houses.
5. STYLE. Scale, proportions and massing are in keeping with nearby houses, while a replica style is avoided. (Standards state that designs in both traditional and modern styles can successfully achieve compatibility and differentiation with historic buildings.)
6. WINDOWS. Windows proportions, size and profile look to nearby contributing structures.
7. PORCHES. A porch is incorporated, and the front door faces the street, to match the pattern in the district.
8. GARAGES. The garage is placed behind the house to minimize the visual prominence.