



**waterloo  
greenway**

**Waterloo Park  
Tunnel Inlet Facility  
Arturo Herrera Mural**

**Presentation to  
Arts Commission**

June 21, 2021



# waterloo greenway



Texas Capitol

Lady Bird Lake

Pontoon  
Bridge

Emma S. Barrientos  
Mexican American  
Cultural Center

Creek  
Delta

RAINEY ST

DAVIS ST

DRISKILL ST

CESAR CHAVEZ ST

Austin Convention Center

Palm  
School

Palm  
Park

SAN JACINTO BLVD

5TH ST

6TH ST

7TH ST

8TH ST

9TH ST

10TH ST

11TH ST

12TH ST

15TH ST

TRINITY ST

NECHES ST

RED RIVER ST

SABINE ST

IH-35

The  
Refuge

Red River Cultural District

Symphony  
Square

Moody  
Amphitheater

Waterloo  
Park

Central Health Brackenridge  
Redevelopment Site

Dell Medical School  
at the University of Texas

Frank C. Erwin, Jr.  
Special Events Center

Dell Seton  
Medical Center

University of Texas  
at Austin

Waterloo Greenway is a 1.5 mile urban ecosystem with the power to bring the entire Austin community together. Waterloo renews the natural environment, promotes play, health and wellness, economic vitality and mobility, and engages the community through outreach, education, cultural events, and the arts.



**waterloo  
greenway**

In  
Partnership  
With



Funded by

**The Marcus Foundation**





**The Tunnel Inlet Facility**





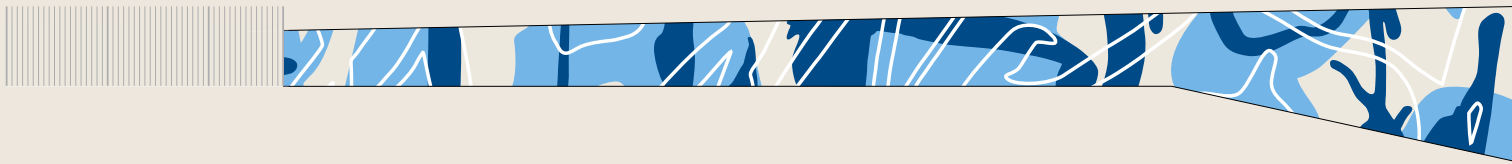
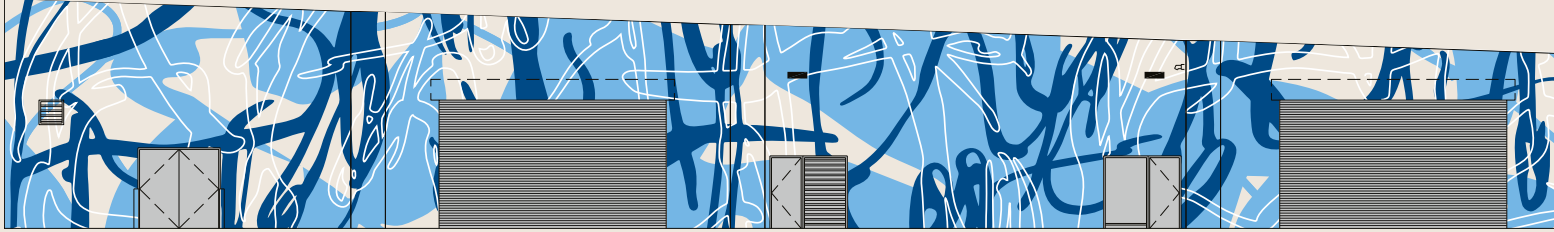
# The Mural





The Mural

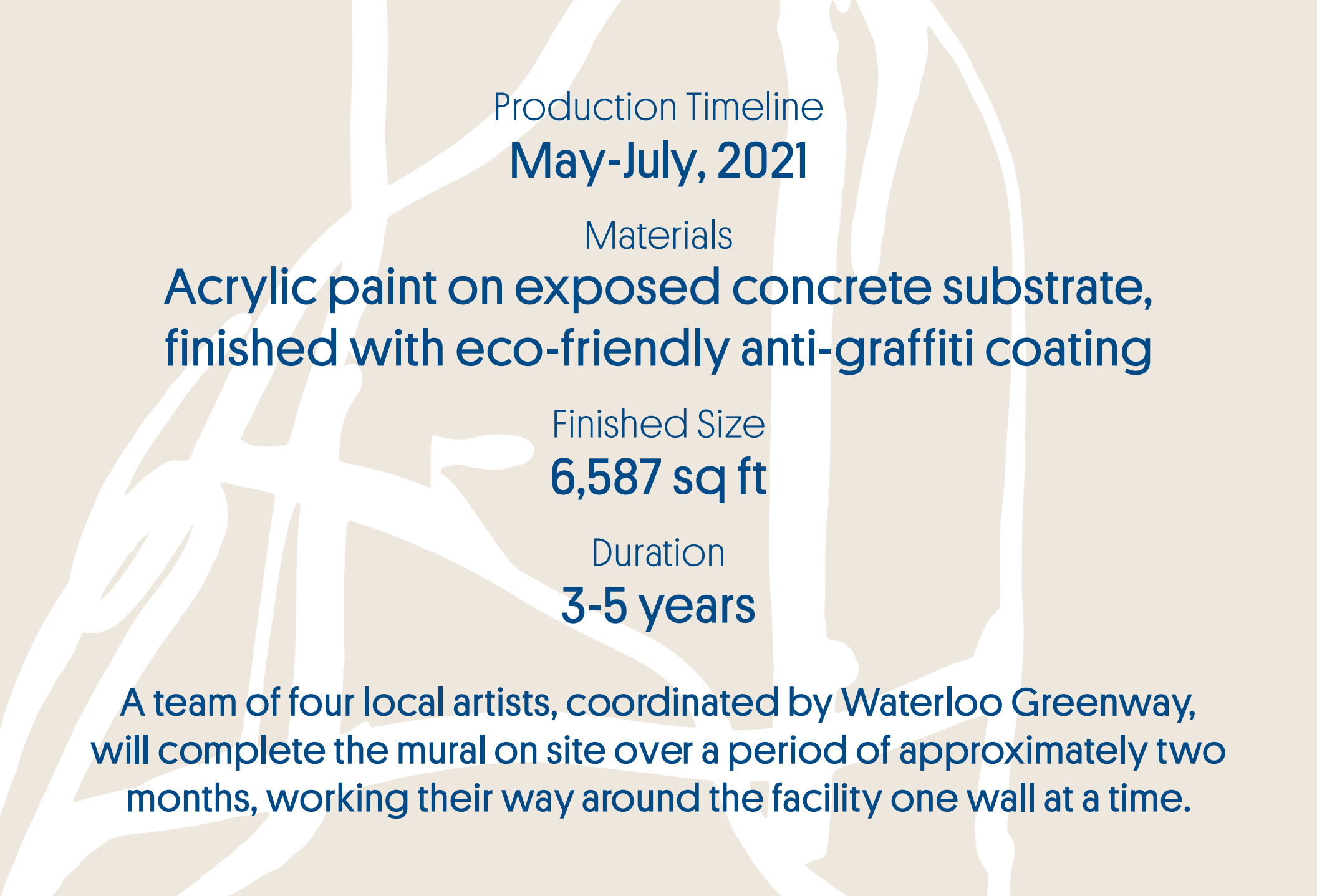




## ***Wall painting for Austin***

*Wall painting for Austin* was created specifically for Waterloo Greenway as part of the public art commissions that will be on long term view at the park. Executed on three walls of the tunnel inlet facility, the wall painting reflects the dynamism and constant activity of water treatment and distribution in downtown Austin. Using animated abstract bio-morphic shapes and lines within a blue and white color scheme, the wall painting echo the vital flow systems inside the water treatment plant as well as the vitality and energy of the park in the urban space. The three-part wall painting for Austin can be enjoyed from the gardens and rolling pathways in the park. The integration of architecture, environmental restoration, landscape design and public art constitutes a complete ecosystem for the entire Austin community.





Production Timeline  
**May-July, 2021**

Materials

**Acrylic paint on exposed concrete substrate,  
finished with eco-friendly anti-graffiti coating**

Finished Size  
**6,587 sq ft**

Duration  
**3-5 years**

**A team of four local artists, coordinated by Waterloo Greenway,  
will complete the mural on site over a period of approximately two  
months, working their way around the facility one wall at a time.**

**Installation**





Arturo Herrera was born in Caracas, Venezuela in 1959, he currently lives and works in Berlin. Over the last 20 years, Arturo Herrera has developed an internationally celebrated, multi-layered body of work—from collages, felt sculpture, public commissions, and wall paintings. His work often references the conflicted legacy of abstraction. Herrera employs shapes and imagery from popular culture, prompting a multiplicity of references and reading for the viewer.

**Arturo Herrera**





*Adam, Linda Pace Foundation, 2013, San Antonio, TX*



*Together, 2020, Bass Museum*



*Band, 2011, NSU Art Museum Fort Lauderdale*



*DB Kunststation Wolfsburg / Upper Area Windows, 2018*

**Arturo Herrera**





Local artists Jason Archer & Josh Row [Show Goat Mural Works], Jana Swec and Joe Swec will work closely with Waterloo Greenway and Arturo Herrera to execute the installation and painting of the mural.

## Installation Team





Thank you to PARD and WPD  
for collaborating in a  
variety of ways including:

**Providing plans and drawings of the site**  
**Coordination with Inlet Facility operations**  
**Preparation of the site for installation**  
**Permitting and other CoA processes**

**City of Austin Partners**



The logo for Waterloo Greenway, featuring the words "waterloo" and "greenway" in a lowercase, sans-serif font. "waterloo" is in orange and "greenway" is in a darker orange/brown color.

waterloo  
greenway

# Waterloo Park Opening Season

**You're Invited!**





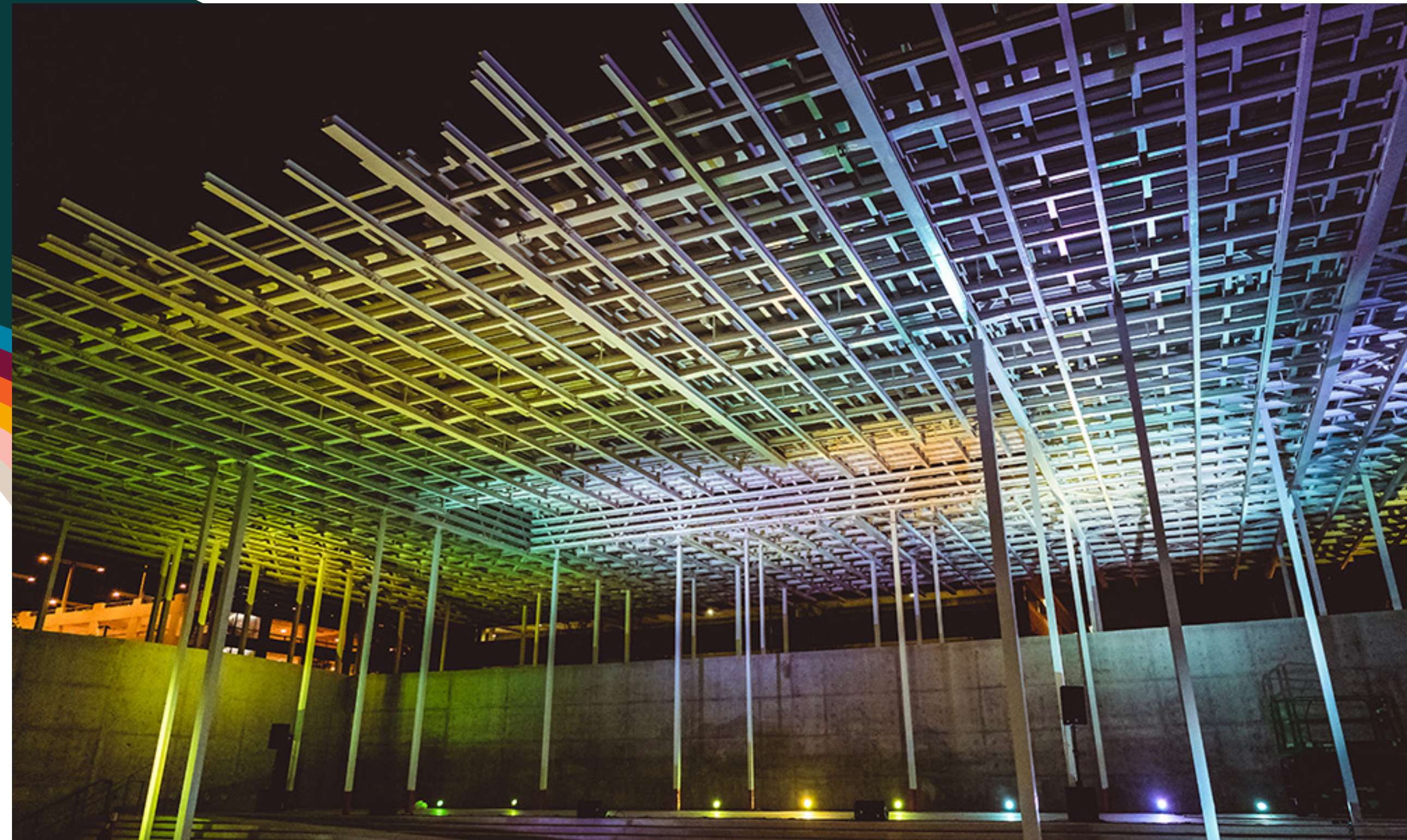




# Waterloo Park and Moody Amphitheater

Waterloo Park is an 11-acre green space, located between 12th and 15th Streets and along Red River and Trinity Streets.

At the heart of Waterloo Park is Moody Amphitheater, a 5,000 capacity venue that will serve as a cultural hub for entertainment in the city. The venue's one-of-a-kind infrastructure was intentionally designed to support large-scale productions, but can easily revert back to park space for all to enjoy. The blending of these new developments provides a unique opportunity for partners to integrate themselves into the future of Austin and its thriving community.







Waterloo Park will unite our neighbors, honor different cultures in our community, and commemorate this green space as a common ground where we all come together.

**Waterloo will CELEBRATE...**

**Community**  
**Our Environment**  
**Our Diversity**  
**Our History**  
**Our Creative Culture**  
**Our Recovery & Revival**  
**AUSTIN!**





The logo for Waterloo Greenway, featuring the words "waterloo" and "greenway" in a lowercase, sans-serif font. "waterloo" is in a light blue color and "greenway" is in a light green color, both with a slight shadow effect.

waterloo  
greenway

# Waterloo Park Opening Season

**August 2021**

## **Waterloo Park Opening Day**

Ribbon Cutting & Land Acknowledgment Ceremonies

Local Music & Dance Performances

Free Evening Public Concert

**Fall 2021**

Live Nation/C3 Concerts • Aug-Dec

Lebermann Plaza Concert Series • Sep/Oct

Asleep at the Wheel 50th Anniversary Concert • Oct

Día de Los Muertos Festival • Oct

MXTX: A Cross Border Cultural Exchange • Oct

Creek Show 2021 • Nov 12-21